

MIDTray

The best MID player for Windows95, it comes with great features like,

Playlist *Save you favorite files and play them over, over and over and over!!*

A proper Pause *MIDTray will remember where you are in a file and jump to that position next time you run it.*

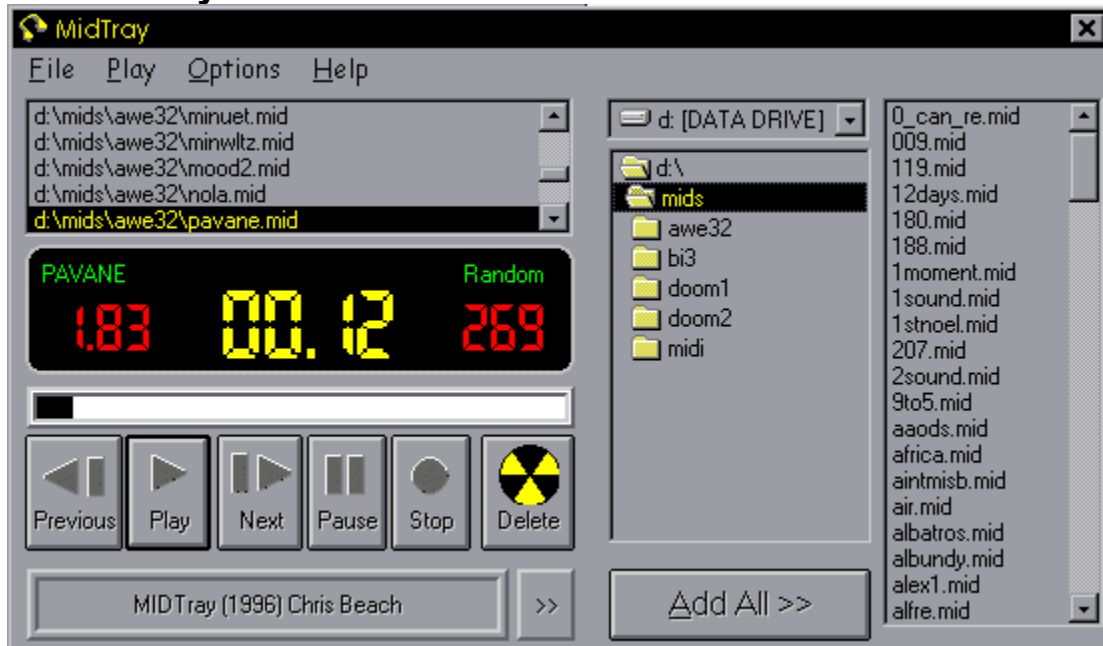
Multi Colours *You might or might not like them :-)*

A Spining Button *Just so you can go crazy for free.*

And best of all

A Tray Icon *Control MIDTray using just one small icon.*

The MIDTray main screen



Contents:

Menus

[File](#)

[Play](#)

[Options](#)

[Help](#)

[Playback Commands](#)

[Adding Files](#)

[The Digital Display](#)

[Information](#)

You might be thinking 'What the hell is he on about, I can't see anything.' This is

probably because you haven't right clicked on the yellow icon on the Windows 95 Startbar. It's probably closest to the right.

The little icon that you've missed is the best part of **MIDTray** and the reason for the name. You might not call it this, but that indentation with the clock in it, is often called the tray. And because this programs plays MID files from the Tray it's called **MIDTray**.

You can do four completely different things to that icon:

- 1) **Left Click** *This will bring up a menu with the common options on.*
- 2) **Right Click** *This will bring up the main screen*
- 3) **Left Double Click** *This will do the same as the prev button/menu*
- 4) **Right Double Click** *This will do the same as the next button/menu*

Once you've set **MIDTray** up, that icon will be the only thing you'll need. If you use **MIDTray** a lot then I suggest you put it in the startup group, and buy it.

I hope you have fun with **MIDTray**

Chris Beach

MIDTray. 1996 Chris Beach

File Menu

The file menu allows you to load and save your playlists

Load List

This will load the MIDTRAY.LIST file

Save List

This will save the contents of the playlist to MIDTRAY.LIST

Quit MIDTray

This will ask if you want to save your settings and

then quit MIDTray

MIDTray. 1996 [Chris Beach](#)

Play Menu

This menu controls the playing of MID files. See also Playback Commands

Play *This will play the currently selected song, or restart the song presently playing*

Pause *This will pause playback. Use play to restart*

Stop *This will stop playback. Play will restart from the beginning*

Next *This will begin playing the next song in the playlis, unless random is selected*

Prev *This will begin playing the previous song played, unless random is selected*

Random *This will decide how the songs will be played back
If it is on then next and prev commands will play a song at random.
When random is on, there will be check by this option and the
random in the display will be light green*

NOTE: *If random is on then next and prev will both act the same
Also random is actually random, SO, well if you look at some programs and
almost all old 8bit machines
the random is calculated on the time since they switched on.*

Options Menu

This menu controls all of the extra options you can use to enhance **MIDTray**.

Volume Control

the path to your

sndvol32 program

load the Mixer

depending on your

bass levels.

*When **MIDTray** is run for the first time this will ask you for*

Mixer control, it will automaticly select the Windows 95

which is the little speaker icon on the start bar.

*Once **MIDTray** has the Mixer information pressing this will*

program which enable you to change the volume, and

soundcard, it will also let you change balance, treble and

Show LED Segments

display will be show

This option will control if the unlit segments of the digital

Colours...

*look of **MIDTray***

All the options under this menu will change the

Display Box Text...
digital display

These options will change foreground colour of the

They will all bring up a selection box of colours

Length Of MID

This is the left-handnumber

Position In MID

This the centre number

Files In Playlist

This is the right-hand number

Background...

apart from the

These options will change the colours of eveything,

buttons, to either

Green

on **Green**

Blue

on **Blue**

If you are wondering why the colour options are limited and why they make the program look ***DISGUSTING*** then

blame my sister. She hates the amount of grey in Windows programs and thinks they should all be more colourful, if you

think she's right then please mail me, and I'll add a better slection of options in the next release.

Defaults
defaults

This will change the colours back to their original installation

Thank God :-)

Save Settings
save.

This will save every setting that I thought might be usefull to

This includes:

*song, this means that
to listen to a song*

*Random
ALL Colours
Show Segments
and most importantly it will save the current Position in the
you'll be able to quit **MIDTray** and reload it with out having
again.* Thanks to the authors of MOD4WIN for that idea.

MIDTray. 1996 [Chris Beach](#)

Help Menu

I think this menu's fairly obvious

Help... *As you have found out, this will load the **MIDTray** help file*

About... *This will display the about box, which will display general information about **MIDTray**
It will also allow you to enter your registration details.*

MIDTray. 1996 Chris Beach

About

This is the customary about box. It will tell you all the information about **MIDTray**. It will also allow you to enter your registration details, which will give you full access to **MIDTray**.

O.K.

This will exit the about box

Register NOW!

This will call up two boxes, one for your registration

name and one for your code.

If the code is correct then Thank You for registering

MIDTray.

MIDTray. 1996 Chris Beach

Playback Commands

These are the six buttons under the digital display.

They all do the same as their play menu equivalents, apart from the delete button which can't do the same

because it is NOT on the play menu.

The delete button has two functions, first it will remove files from the playlist, second it will delete MID files.

When using the delete button to delete MID files, please be careful, it doesn't just move the files to the Windows 95 recycle bin, it completely removes, destroys, kills, annihilates, vaporises and obliterates them.

The only way you might be able to get them back is using MSDOS 5/6 undelete command, but it doesn't like Windows 95.

If you still want to delete, then double-clicking will remove the selected file from the playlist, or you can drag

and drop the files from the playlist to the button.

Adding Files

To use **MIDTray** you have to give it some files to play. You do this by adding files to the playlist.

You may be wondering how you select the files, well if you look at the bottom right of the **MIDTray** screen you will see a button with >> on it. Pressing this will expand the screen to show the file selection options.

You should recognize these from any other Windows program, there are 3 main parts:

Drive List *This is a list of all the drives on your computer. You can play MIDs from any, or all, drives but make sure that they are not removable drives.*
***MIDTray** will NOT sprout arms, find the disk/CD and insert it into your computer. It might do someday but not this day.*

Directory List *This lists all directories on the drive selected.*

File List *This is where all of your MID files should be listed, if you can't find any MIDs, then next time you spend money downloading a program, I suggest you read the description about it first.*

There are a number of ways to get your files from the File list to the play list:

- 1) **Add All**, this will add all the MID files in the file list to the play list.
- 2) **Double Click**, this will add single files to the list, usefull if you have a lot of naff files on your system.
- 3) **Drag 'n' Drop**, this will enable you to add any number of files to the playlist. Use CTRL-CLICK to select individual files, or SHIFT-CLICK to add a continuous group. Then press and hold the right mouse button and drag the files to the play list.

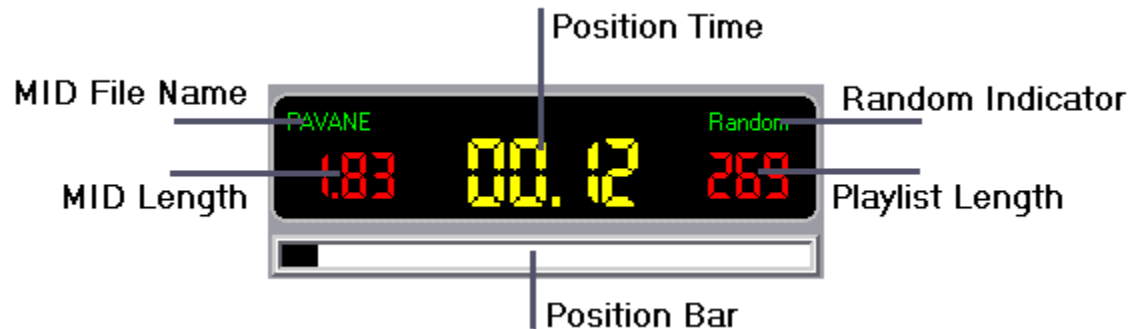
Once you've finished then just press the << button and then your ready to PLAY!!

Playlist

This is the list of all the files **MIDTray** will play.

Digital Display

This is the information part of **MIDTray**, it has 6 sections:



- 1) **MID File Name,** *this is the name of the file that is currently playing*
- 2) **MID Length,** *this is the length in minutes of the file*
- 3) **Position Bar,** *this is the percentage of the song that has played*
- 4) **Playlist Length,** *this is the number of files in the playlist*
- 5) **Random Indicator,** *if it's light green, playback is random. If it is dark green, playback is not!*
- 6) **Position Time,** *this is the amount of time that has elapsed.*

There is another indicator of position, and that is the delete button. It will spin faster and faster as the song reaches its climax. Isn't that great??

Information

MIDTray is shareware, that means that you can try it for 30 days and if you like it then you can pay me some money for it.

Once you have registered you will be able to load the playlist you've saved, and also you'll be able to change those disgusting colours my sister picked, if you want to. You'll also be entitled to free upgrades when there are any upgrades to have.

There are number of ways you can register **MIDTray**:

1)CompuServe SWREG service. Search for user ID 100436,172 and select **MIDTray**.

This is the best method because it's quick and there is no P&P

2)Post

Send the money to:

Chris Beach
MIDTray Registration
Long Meadow
Paxford
Chipping Campden
Gloucestershire
GL55 6XD
ENGLAND

The cost of **MIDTray** will be \$30 or £15. If you do use the post option the please add at least £5 more for P&P, but if you live in some other universe then add more. You will recive any extra back with your disk.

Contacting the author

There are five ways you could contact me

1)CompuServe ID 100436,172 (comma between numbers)

2)Internet EMail 100436.172@compuserve.com (period between numbers)

3)FAX 01386 593592

4)Phone 01386 593592

5)Snail Mail Use the address above without the **MIDTray** line.

What's New

v0.0.0 Original design, nothing works apart from the about box!!
v0.5.0 Most things work, but very little features
v1.0.0 Could be released but no digital font and therefore looks naff
v1.0.1 This version

Suggestions

If you have any ideas or bug reports, please mail me and I'll do my best to add or fix them

VB Programmers

If you have vb3 pro or vb4 pro and would like to convert MIDTray to 16bit then please write and we can arrange something. I am willing to distribute the code but not in its complete form, this is just for programmers that want to do a similar thing but can't think how to do it.

I have also written some common modules/code that can be used in any project.

About Box: This about box uses the app object and form1 to display its information, it also allows

shareware programs to be registered when used with...

RegModule: This small module uses two routines, one for the user to enter his details and one to

get the details back. It's not perfect because it uses the Win95 registry but it works.

PKUNZIP: This is an example of using PKUNZIP through Windows to unzip files, it was written has

a test for another one of my programs

Now the legal crap

All of **MIDTray** is my work, this helpfile is my work, don't decompile, reverse-engineer or whatever to any part of **MIDTray**.

Windows, Windows '95, MSDOS, Visual Basic are Microsoft copyrights.

CompuServe is a something of CompuServe Information Service.

PKUNZIP is a copyright of PKZIP (I think)

If you think something is yours then please let me know and I'll remove it or credit you.

Glossary



:-)

C

Chris Beach

CIS

CompuServe

G

God

I

Icon

L

LCD

LED

M

Microsoft

MID

Mixer

MSDOS

N

Number

P

PC

PKUNZIP

Playlist

S

Soundcard

StartBar

T

Tray

V

VB

W
Win

:-)

Emoticon, adds emphasis to phrases

Chris Beach

100436.172@compuserve.com

CIS

CompuServe Information Service

CompuServe

CompuServe Information Service

God

A being who might of created the universe and everything in it. How? we don't know, but we'll skip that shall we?

Icon

Small Picture

LCD

Liquid Crystal Display, common in calculators, stereos, and programs that are supposed to look 'realistic'.
Like this one!!

LED

Light Emitting Diode.

Microsoft

If you don't know who this is then you are not reading this :-)

MID

MIDI, or Musical Instrument Digital Interface. What this means is synthesized music. Soundcards can make MIDI music using FM which is entirely computer generated and normally sounds like it, or the later cards use wavetable, which means that the instruments are stored as recordings (in wav files). One of the best wavetable cards is the SoundBlaster AWE 32.

Mixer

A name for a program that controls the volume, balance, treble and bass settings for a soundcard

MSDOS

Microsoft Disk Operating System

Number

in the US, No in the UK, Number for people with a disliking for abbreviations

PC
Personal Computer

PKUNZIP

A MSDOS utility that will extract files from the popular archive format, ZIP.

Playlist

The list of files played by MIDTray

Soundcard

A CARD that fits into a PC and plays SOUND

StartBar

The bar that is usually at the bottom of Win95, supposed to replace Program Manager. BTW did you know that Explorer is know the actual equivalent of Progman? Try killing explorer from the alt-ctrl-del menu...

Tray

The indentation on the Windows 95 start bar

VB

Visual Basic, a easy to use programming language.

Win

Microsoft's, nice friendly operating system.

If you don't know anything about computers then windows are clear glass panels in houses, you use them to see outside.

Why Microsoft called Windows, Windows is anyone guess, its not made of glass (crashes as easily as glass though :) and you can't see through it. If someone knows the reasoning behind the name let me know.

Win is Windows for people who can't spell or can't be bothered to write 4 extra letters.

