

## Win Multiple Configurations

JRE Enterprises presents Win Multiple Configurations for Windows. Win Multiple Configurations (WMC) will allow you to save and use up to one-hundred different desktops. This includes having different SYSTEM.INI and WIN.INI configurations. Create desktops specific for your children, husband, wife and/or co-worker(s). Also, password protect any or all saved configuration entries -- a good way to protect against accidental access to certain applications and/or critical data. WMC now supports being installed on a server and accessed by client workstations, view [Installation and Usage](#). WMC now includes the program Win Change.

Win Change consists of: three functions: Change Text, Find Text, and Find File Types. Change Text provides an easy method to globally change data in INI, PIF, GRP, and other files across multiple drives, including network drives. Find Text provides an easy method to globally find text data within any type of files. Find File Types provides an easy method to find files by file type(s). *When using the Win Change program, help text is displayed for items, at the bottom of the window, when the mouse pointer is placed over the items.*



Win Multiple Configurations is coded using Microsoft Visual Basic and Microsoft Professional ToolKit for Visual Basic.

### **Installation**

[Installation and Usage](#)

### **Menu Items**

[About](#)

[Compress](#)

[Fonts](#)

[Global Include List](#)

### **Programs**

[WMCREG](#)

[WMCSAVE](#)

#### **Windows**

[WMCSAVE Main Window](#)

[Customize Options Window](#)

[Add Password Window](#)

[Change or Delete Password Window](#)

[Password Check Window](#)

[Choose New Graphic/Picture Window](#)

[Add/Change Text Window](#)  
[Update File Include List Window](#)  
[About Window](#)  
[Registration Window](#)  
[Compress Options Window](#)

[WMCSTRT](#)

**Windows**

[WMCSTRT Main Window](#)

[WMCQSAV](#)

[WMCQSTR](#)

[WMCCOPY](#)

[DMCSTRT](#)

**Windows**

[DMCSTRT Main Window](#)

[WCHG](#)

**Windows**

[Change Text Window](#)

[Specify Changes Folder](#)

[Find Files Folder](#)

[Apply Changes Folder](#)

[Backout Changes Folder](#)

[Find Files by Text Window](#)

[Specify Find Text Folder](#)

[Find Files Folder](#)

[Find Files by Type Window](#)

[Copy or Move Selected Files Window](#)

**Registration**

[Becoming a Registered User](#)

[License Agreement](#)

**Other Information**

[Association of Shareware Professionals](#)

[Changing the Active Entry Color](#)

[Miscellaneous](#)

[Norton Desktop for Windows](#)

[PC Tools for Windows](#)

## Installation and Usage

To install Win Multiple Configurations, run SETUP.EXE. WMC now supports being installed on a server and accessed by many clients. For server installations, use the OPTIONAL INSTALL method, which places all executables (exe, com, bat, dll, vbx) in the application directory. WMC also supports each client machine or each user having their own WMC data directory, where saved configuration are stored. This can be use in a standalone or client/server installation and allows up to 100 saved configurations per WMC data directory.

There are now four different ways to use WMC; Classic, Enhanced-Classic, Client/Server, Enhanced Client/Server:

### *Classic WMC:*

Classic WMC is where WMC is installed on each workstation. The person or group of people using the workstation can save up to 100 Windows configurations. The 100 saved configurations are shared amongst the people using the workstation.

WMC is installed using either the STANDARD or OPTIONAL installation method on each workstation. Up to 100 configurations can be saved and restored on each workstation. Saved configurations are stored in the WMC installation directory. All users of the workstation share the 100 configurations. This is the standard way to use WMC and was the only way to use WMC prior to Version 7.0.

### *Enhanced-Classic WMC:*

Enhanced-Classic WMC is where WMC is installed on each workstation. The person or group of people using the workstation can save up to 100 Windows configurations per WMC Data directory. Each person can specify their own WMC Data directory and need not share it with other people.

WMC is installed using either the STANDARD or OPTIONAL installation method on each workstation. The WMCDATAPATH environment variable **must** be set before using WMC to a "WMC Data Directory", which is a directory other than the WMC installation directory. Up to 100 configurations can be saved and restored per WMC Data Directory. If each user of the workstation sets the WMCDATAPATH environment variable to a different WMC Data Directory, then each user can save and restore up to 100 configurations. In this case, the WMCUSER environment variable **must** also be set before using WMC to a unique value for each user; otherwise, WMC will not work properly. Normally, the WMCDATAPATH and WMCUSER variables are set in the AUTOEXEC.BAT file.

### *Example:*

```
AUTOEXEC.BAT:
    set WMCDATAPATH=c:\wmcdata\joe      ' where c: points to a local drive
    set WMCUSER=joe
```

### *Client/Server WMC:*

Client/server WMC only supports the situation where each person or group use only one client workstation (Person A always uses workstation 1, Persons C and D always uses workstation 2). Client/server WMC does not support a person or group using multiple client workstations (Person A uses workstation 1 and uses workstation 2). Enhanced Client/Server

WMC supports the use of multiple client workstations by an individual in certain situations.

WMC is installed using the OPTIONAL installation method on a server. Client workstations connect to the server to execute WMC. Run CSSETUP.EXE, found in the WMC installation directory on the server, for each client to set up the WMC Program Manager Group and icons on the client(s). The WMCDATAPATH environment variable **must** be set before using WMC to a "WMC Data Directory", which is a directory other than the WMC installation directory. The directory can reside on the server or the client workstation. The WMC DATA Directory **must** be a unique directory for each client workstation if the directory(s) reside on a server. Up to 100 configurations can be saved and restored per WMC Data Directory. If each user of the workstation sets the WMCDATAPATH environment variable to a different WMC Data Directory, then each user can save and restore up to 100 configurations. In this case, the WMCUSER environment variable **must** also be set before using WMC to a unique value for each user; otherwise, WMC will not work properly. Normally, the WMCDATAPATH and WMCUSER variables are set in the AUTOEXEC.BAT file.

*Example:*

```
AUTOEXEC.BAT:
    set WMCDATAPATH=c:\wmcdata\joe      ' where c: points to a local drive
    set WMCUSER=joe
```

*Enhanced-Client/Server WMC:*

Enhanced-Client/server WMC supports the same as Client/Server WMC, but under certain situations it can also support a person or group using multiple client workstations (Person A uses workstation 1 and uses workstation 2). If a person uses multiple client workstations, then Enhanced Client/Server WMC will work if each of the client workstations are the same in hardware and software configuration. WMC saves and restores the Windows SYSTEM.INI file, which contains hardware and software specifics for a workstation. If the SYSTEM.INI values do not match the workstation hardware and software specifics, then Windows may not start!

WMC is installed using the OPTIONAL installation method on a server. Client workstations connect to the server to execute WMC. Run CSSETUP.EXE, found in the WMC installation directory on the server, for each client to set up the WMC Program Manager Group and icons on the client(s). The WMCDATAPATH environment variable **must** be set before using WMC to a "WMC Data Directory", which is a directory other than the WMC installation directory. The directory must reside on a server. The WMC DATA Directory **must** be a unique directory for each client workstation. Up to 100 configurations can be saved and restored per WMC Data Directory. The WMCUSER environment variable **must** also be set before using WMC to a unique value for each user; otherwise, WMC will not work properly. If each user of the workstation sets the WMCDATAPATH environment variable to a different WMC Data Directory, then each user can save and restore up to 100 configurations. Normally, the WMCDATAPATH and WMCUSER variables are set in the AUTOEXEC.BAT file.

*Example:*

```
AUTOEXEC.BAT:
    set WMCDATAPATH=g\wmcdata\joe      ' where g: points to a server drive
    set WMCUSER=joe
```



## **Becoming a Registered User**

We thank you for giving Win Multiple Configurations a test drive. Registration is easy and it ensures that we at JRE Enterprises can continue to develop low cost, quality applications for Windows.

View REGISTER.WRI for current pricing information and registration form.

Related topics:

[License Agreement](#)

[WMCREG Program](#)

**License Agreement**  
**Copyright © 1993-1996 JRE Enterprises**  
**All Rights Reserved**

Installation of Win Multiple Configurations on your computer system implies agreement with the terms and conditions below.

Distribution of Win Multiple Configurations, its accompanying programs and documentation is considered as is. JRE Enterprises offers no warranties of any kind, expressed or implied. This includes, but is in no way limited to, warranties of Win Multiple Configurations merchant ability or fitness for a particular purpose. Under no circumstances will JRE Enterprises be liable for any damages which result from the use of this program or the inability to use it. Exclusion from liability includes, but is not limited to, lost profits, lost savings, or any other incidental or consequential damages.

Win Multiple Configurations is distributed as Shareware. It is not free, freeware, or in the public domain. You may use Win Multiple Configurations for a trial period of thirty days, at no cost to you, to determine if it fits your needs. If you decide to use Win Multiple Configurations past the thirty day trial period, you must register and pay the applicable registration fee. Individual copies of the unregistered version of Win Multiple Configurations may be given to friends and associates for the same thirty day free trial period. You may also upload Win Multiple Configurations to the public section of a public BBS.

You may not modify or disassemble Win Multiple Configurations, nor distribute any modified or disassembled versions of Win Multiple Configurations.

Win Multiple Configurations may not be included with any other product without written permission from JRE Enterprises.

**STANDALONE REGISTRATION:**

Standalone registration of Win Multiple Configurations (the "SOFTWARE") permits you to use the "SOFTWARE" on a single computer. The "SOFTWARE" is in "use" on a computer when it is loaded into temporary memory (i.e., RAM) or installed into permanent memory (e.g., hard disk, CD-ROM, or other storage device) of that computer. However, installation on a network server for the sole purpose of internal distribution shall not constitute "use" for which separate license is required, provided you have a separate license for each computer to which the "SOFTWARE" is distributed. You may make backup copies of Win Multiple Configurations as necessary for archival purposes only.

**CLIENT/SERVER REGISTRATION:**

Server registration of Win Multiple Configurations (the "SOFTWARE") permits you to use the "SOFTWARE" on a single network server. The "SOFTWARE" is in "use" on a server when it is installed into permanent memory (e.g., hard disk, CD-ROM, or other storage device) of that computer. Each server registration includes ONE Client registration.

Client registration of Win Multiple Configurations (the "SOFTWARE") permits you to use the "SOFTWARE" on a single computer by accessing the "SOFTWARE" executables from a network server. The "SOFTWARE" is in "use" on the client when it is loaded into temporary memory (i.e., RAM). The "SOFTWARE" executables may NOT be installed into permanent memory (e.g., hard disk, CD-ROM, or other storage device) unless the computer also has a STANDALONE registration. The "SOFTWARE" data files may be installed into permanent memory (e.g., hard disk, CD-ROM, or other storage device) without a STANDALONE registration.

However, installation on a network server for the sole purpose of internal distribution shall not constitute "use" for which separate license is required, provided you have a separate license for each computer to which the "SOFTWARE" is distributed. You may make backup copies of Win Multiple Configurations as necessary for archival purposes only.

**SITE LICENSE REGISTRATION:**

Site license registration of Win Multiple Configurations (the "SOFTWARE") permits you to use the "SOFTWARE" in any combination of STANDALONE REGISTRATION and CLIENT/SERVER REGISTRATION on all computers owned or operated by the registering party which reside within the same city limits.

U.S. Government RESTRICTED RIGHTS: Use, duplication, or disclosure by the Government is subject to restrictions as set forth in subdivision (b)(3)(ii) of the Rights in Technical Data and Computer Software clause at 252.227-7013.

## Changing the Active Entry Color

To change the Active Entry color from its default of yellow, do the following:

Edit "JREWMC.INI" in the WMC directory -- this can be done using Notepad

Add "Hibcolor=???" somewhere after the [Win\_Multi\_Config] line

??? stands for one of these values:

Black

Red

Green

Yellow

Blue

Magenta

Cyan

White

Any other value for ??? will cause the default color of yellow to be used.

Save "JREWMC.INI" and run WMCSAVE or 'WMCSTRT to see the new color.



## **Compress Menu Item**

Displays the Compress Options Window, which allows the specification of the PKZIP directory and whether to use the compress option for saved configurations.

## Miscellaneous

Also available from JRE Enterprises are programs JRE Exit, JRE Home Inventory, My Life and Win Change. **JRE Exit** is a freeware utility that provides four different ways to exit Windows. **JRE Home Inventory** is the Windows Home Inventory program that keeps track of all your household items for insurance purposes. **My Life** is the definitive diary, word processor, scrapbook, and multi-media scrapbook available for Windows. **Win Change** is the only utility that allows you to make global changes to text strings in GRP, INI, PIF and other types of files.

These programs can be found on CompuServe (WINSHARE forum) and America Online (Windows software) with a keyword of JRE.

JRE Enterprises can be contacted on CompuServe via mail to ID 71162,2311 or contacted on America Online via mail to ID LeeL641756.

## Compress Options Window

The compress options window appears if the "compress" menu option is chosen. This window allows you to specify where PKZIP and PKUNZIP are located and whether to compress saved configurations to save space using PKZIP. The path location of PKZIP must be specified if the compress option is checked. Press the drive button to be given a drive/directory list to specify where PKZIP resides. PKZIP and PKUNZIP are assumed to be in the same directory. The PKZIP program name is assumed to be PKZIP.EXE. The PKUNZIP program name is assumed to be PKUNZIP.EXE.

When PKZIP or PKUNZIP are run, they are run in a DOS window using the \_DEFAULT.PIF. For best results, edit \_DEFAULT.PIF using Microsoft's PIF Editor and set the "Close Window on Exit" check box to true (checked).

## Norton Desktop for Windows

Win Multiple Configurations provides native support for Norton Desktop for Windows Version 2.2 and Version 3.0. Norton Desktop for Windows **must** have 'Save Configuration on Exit' turned off for WMC to work correctly. Also, WMC expects the key combination of 'ALT + C + S' to perform a NDW save configuration for NDW Version 2 and WMC expects, for NDW 3, the Save Configuration sub-menu item to be located under the Options menu item.

For NDW 3 users, if the menus have been modified where the Save Configuration menu item is no longer found under the Options menu item, then program SAVENDW.EXE must be changed. To change this program, use Norton's ScriptMaker and open SAVENDW.SM located in the WMC directory. Modify SAVENDW.SM so it will choose the correct menu item path to perform a Save Configuration. Compile SAVENDW.SM and save the EXE in the WMC directory. For additional help on Norton's ScriptMaker program, reference the Norton manual and the ScriptMaker help file.

Prior users of WMC and NDW may want to change their include file list for NDW configurations to use wild card entries that match the following specifications:  
Windows directory -- WIN.INI, SYSTEM.INI, CONTROL.INI, NDW.INI, \*.CDX, and \*.QAG.  
Norton Desktop for Windows directory -- NDW.BIN, \*.DAT, \*.INI, \*.MNU, \*.NDB, and \*.TBR.

## PC Tools for Windows

Win Multiple Configurations provides native support for PC Tools for Windows Version 1.0 and Version 2.0. PC Tools for Windows **must** have the following entry in their AUTOEXEC.BAT file, prior to invoking DMCSTRT and/or Windows:

```
SET PCTOOLS=xxx
```

where xxx is the drive and directory of the PC Tools for Windows data directory.

EXAMPLE:

```
SET PCTOOLS=C:\CPS\DATA
```

Depending on which PC Tools for Windows programs were installed, this entry may already exist in the AUTOEXEC.BAT file.

Due to the way PC Tools for Windows works, WMC uses program DMCSTRT to save PC Tools for Windows configurations and uses program DMCSTRT any time a PC Tools for Windows configuration is involved in a configuration switch. DMCSTRT is a DOS-based program and will automatically be invoked by WMCSTRT, WMCQSTR, WMCSAVE, and WMCQSAV. See the Help entry [DMCSTRT](#) for additional information on how to set up and use DMCSTRT.



## WMCSAVE Program

The WMCSAVE program is used to save configuration information. The current Windows configuration should be saved with WMCSAVE before attempting to create and save different Window configurations. WMCSAVE allows up to one-hundred configurations to be saved. Any time the windows configuration changes, WMCSAVE/WMCQSAV should be invoked to store the changes in the appropriate configuration entry.

WMCSAVE easily saves different configuration entries. These configurations entries can be restored by running programs DMCSTRT, WMCSTRT, or WMCQSTR. DMCSTRT allows changing configurations from DOS; WMCSTRT and WMCQSTR allows changing configurations from Windows. WMCSTRT is normally placed in the Windows startup group, unless DMCSTRT is being used.

The WMCSAVE program determines the files to save for a configuration entry by the *Global Include List* and the *Include File List* for that entry. When first saving a configuration entry, the *Include File List* is initialized based upon the windows shell program being used. In addition, the user can modify the *Global Include List* and the *Include File List*. The *Global Include List* is used to specify files that are to be included for all configurations, the *Include File List* is specific to a configuration and is used to specify files that are to be included for that configuration.

If Program Manager is the shell (shell = progman.exe), then the *Include File List* is initialized with the following files in the Windows directory: WIN.INI, SYSTEM.INI, CONTROL.INI, PROGMAN.INI, and WINFILE.INI.

If Norton Desktop is the shell (shell = ndw.exe), then the *Include File List* is initialized with the following files in the Windows directory: WIN.INI, SYSTEM.INI, CONTROL.INI, NDW.INI, \*.CDX, and \*.QAG. And with the following files in the Norton Desktop for Windows directory: NDW.BIN, \*.DAT, \*.INI, \*.MNU, \*.NDB, and \*.TBR. See Help entry [Norton Desktop for Windows](#) for additional information on how to use WMC with Norton Desktop.

If PC Tools for Windows is the shell (shell = wndt.exe), then the *Include File List* is initialized with the following files in the Windows directory: WIN.INI, SYSTEM.INI, and CONTROL.INI. And with the following files in the PC Tools for Windows data directory: \*.DAT, \*.EMS, \*.FSS, \*.HEP, \*.ICC, \*.ICL, \*.INI, \*.OFC, \*.SCT, \*.SET, and TEMPLATE.\*. See Help entry [PC Tools for Windows](#) for additional information on how to use WMC with PC Tools for Windows.

All other shell programs have the *Include FileList* initialized to the following files: WIN.INI, SYSTEM.INI, and CONTROL.INI

Note: Any time PROGMAN.INI is in the Include File list, then all \*.GRP files specified in PROGMAN.INI will be saved.

Related topics:

WMCSAVE Main Window



## WMCSAVE Main Window

The main window of the WMCSAVE program allows up to one-hundred different configuration entries to be saved. The active configuration selection has its text box background color different than the other 100 selections' background color.

WMCSAVE displays ten configurations per page. Press the 0-to-9 PAGE button to cycle through the 100 configurations.

Clicking with the left mouse button on any of the entries (pictures) will bring up the Customize Options Window. This window provides the ability to set various options to use when saving and restoring the selected configuration.

Clicking with the right mouse button on any of the entries (pictures) will make that entry inactive. All saved configuration files for the entry will be deleted and all configuration options set back to their default values.

The File menu item gives provides the ability to exit WMCSAVE. The Options menu item provides the ability to specify the compress option, invoke the fonts process and specify global include list. The Help menu item provides the ability to display the about window, which gives the copyright notice and version/release number for Win Multiple Configurations.

The *EXIT* key will terminate the WMCSAVE program.

Related topics:

[Customize Options Window](#)

[Add Password Window](#)

[Change or Delete Password Window](#)

[Password Check Window](#)

[Choose New Graphic/Picture Window](#)

[Add/Change Text Window](#)

[Update File Include List Window](#)

[About Window](#)

[About](#)





## Registration Window

The registration window is used to enter your name and registration code. After entering a valid registration code the annoying "Unregistered Shareware" message will stop. The registration code contains **no** numbers.

The UPDATE button will validate the registration code and will write a valid registration code and your name to the JREWMC.INI file.

The EXIT button will close the registration window and exit the Win Multiple Configuration Registration program.

Related topics:

[About](#)

[Becoming a Registered User](#)

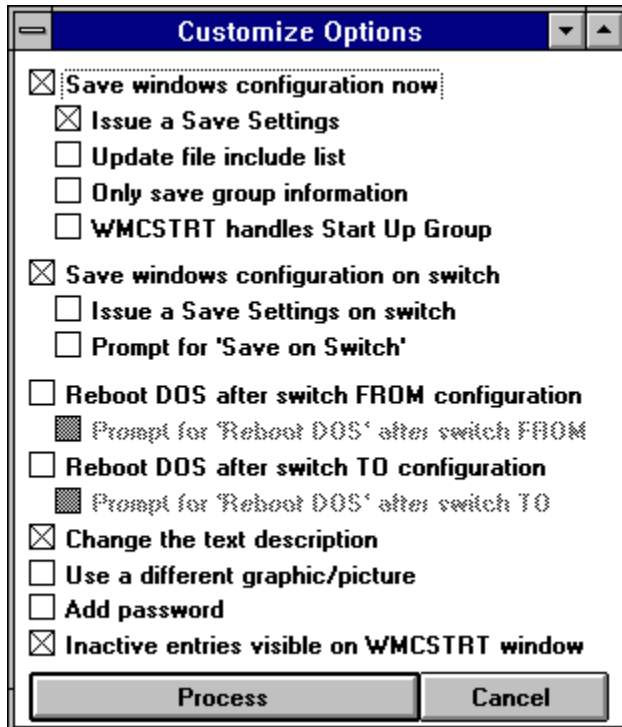
[License Agreement](#)

## **Association of Shareware Professionals**

This program is produced by a member of the Association of Shareware Professionals (ASP). ASP wants to make sure that the shareware principle works for you. If you are unable to resolve a shareware-related problem with an ASP member by contacting the member directly, ASP may be able to help. The ASP Ombudsman can help you resolve a dispute or problem with an ASP member, but does not provide technical support for members' products. Please write to the ASP Ombudsman at 545 Grover Road, Muskegon, MI USA 49442-9427, Fax 616-788-2765, or send a CompuServe message via CompuServe Mail to ASP Ombudsman 70007,3536.

## ✓ Customize Options Window

The customize options window appears after an entry has been selected by clicking with the left mouse button on the entry's picture. Seven primary options can be chosen on this window. These options are: Save the current Windows configuration now, Save windows configuration on switch, Reboot DOS on switch, Change the text description for the entry, Use a different graphic/picture for the entry, Add/Change/Delete a password for the entry, and/or make Inactive entries visible on WMCSTRT window..



Click on an option's check box in the picture for additional information on that option.

Select an option by clicking on the option until a "X" (check) appears in its box. When all options needed have been checked, press the *Process* key to do the options. Press the *Cancel* key to exit without doing any options.

Related topics:

[WMCSAVE Main Window](#)

[Add Password Window](#)

[Change or Delete Password Window](#)

[Password Check Window](#)

[Choose New Graphic/Picture Window](#)

[Add/Change Text Window](#)

[Update File Include List Window](#)

[About Window](#)

[Registration Window](#)



## Add Password Window

The add password window appears if the "add a password" option was checked on the Customize Options Window. Type in a password from one-to-twelve characters in length in both password text fields. If the same password is typed in both password fields, then the password is added. REMEMBER the password or else the saved configuration entry will not be accessible.

Press the *Done* key to save the password. Press the *Cancel* key to exit without saving the password.

Related topics:

[WMCSAVE Main Window](#)

[Customize Options Window](#)

[Change or Delete Password Window](#)

[Password Check Window](#)

[Choose New Graphic/Picture Window](#)

[Add/Change Text Window](#)

[Update File Include List Window](#)

[About Window](#)

[Registration Window](#)



## Change or Delete Password Window

The change or delete password window appears if the "change/delete a password" option was checked on the Customize Options Window. To change a password, type in a new password from one-to-twelve characters in length in both password text fields. If the same password is typed in both password fields, then the password is changed. REMEMBER the password or else the saved configuration entry will not be accessible. To delete a password, do not type in any characters, just press the *Done* key.

Press the *Done* key to change or delete the password. Press the *Cancel* key to exit without changing or deleting the password.

Related topics:

[WMCSAVE Main Window](#)

[Customize Options Window](#)

[Add Password Window](#)

[Password Check Window](#)

[Choose New Graphic/Picture Window](#)

[Add/Change Text Window](#)

[Update File Include List Window](#)

[About Window](#)

[Registration Window](#)



## Password Check Window

The password check window appears if the "change/delete a password" option was chosen on the Customize Options Window. This window will appear before the change/delete password window. The current password must be entered correctly in order to be able to change or delete the current password.

Press the *Done* key after entering the current password. A total of three try's are allowed to enter the correct current password for the configuration entry. Press the *Cancel* key to exit without changing or deleting the password.

Related topics:

[WMCSAVE Main Window](#)

[Customize Options Window](#)

[Add Password Window](#)

[Change or Delete Password Window](#)

[Choose New Graphic/Picture Window](#)

[Add/Change Text Window](#)

[Update File Include List Window](#)

[About Window](#)

[Registration Window](#)



## Choose New Graphic/Picture Window

The choose new graphic/picture window appears if the "choose new graphic/picture" option was checked on the Customize Options Window. This window allows the specification of a different graphic/picture to be displayed for the configuration entry. The valid graphic formats are: BMP, WMF, ICO, and DIB. Select a graphic by double clicking on its name in the *file list* box. The graphic will be displayed on the right side of the window as it would look when displayed on the main forms of WMCSAVE and WMCSTRT. Graphics will automatically be sized to fit the box size.

Press the *Use Graphic* key to use the selected graphic for the entry. Press the *Cancel* key to exit without using a graphic.

Related topics:

[WMCSAVE Main Window](#)

[Customize Options Window](#)

[Add Password Window](#)

[Change or Delete Password Window](#)

[Password Check Window](#)

[Add/Change Text Window](#)

[Update File Include List Window](#)

[About Window](#)

[Registration Window](#)



## **Add/Change Text Window**

The add/change text window appears if the "add/change text" option was checked on the Customize Options Window. This window allows you to enter a text description for the configuration entry. The text entry can be up to 144 characters in length.

Press the *Use Text* key to use the entered text for the entry. Press the *Cancel* key to exit without saving the entered text.

Related topics:

[WMCSAVE Main Window](#)

[Customize Options Window](#)

[Add Password Window](#)

[Change or Delete Password Window](#)

[Password Check Window](#)

[Choose New Graphic/Picture Window](#)

[Update File Include List Window](#)

[About Window](#)

[Registration Window](#)





## Update File Include List Window

The update file include list window appears if the "update file include list" option was checked and the "save the current windows configuration now" option was checked on the Customize Options Window. **OR** if the "global include list" menu option is chosen. This window allows you to select additional files to include in the save/restore process for the selected configuration entry. Double click on files in the *File Name* list to add them to the *Include Files* list. Double click on the *File Name* text box (or click on the <-- button) to add a wild card file specification to the *Include Files List*. Files from various drives and/or directories can be added to the list. Other types of files, besides INI files, can be added to the list by changing the \*.INI in the *File Name* field. To remove files from the *Include Files List*, double click on them.

WMC recognizes two wild cards in the *File Name* text box, the \* (asterisk) and the ? (question mark). The \* represents one or more characters that a group of files have in common. The ? represents a single character that a group of files have in common. Refer to the MS-DOS manual or Windows 3.1 manual for more information concerning wild cards.

Press the *Update File Include List* key to process the new include files list. Press the *Cancel* key to exit without saving any changes made to the include files list.

Related topics:

[WMCSAVE Main Window](#)

[Customize Options Window](#)

[Add Password Window](#)

[Change or Delete Password Window](#)

[Password Check Window](#)

[Choose New Graphic/Picture Window](#)

[Add/Change Text Window](#)

[About Window](#)

[Registration Window](#)

 **About Window**

The about window displays the copyright notice, the version.release number, and the registration status of Win Multiple Configurations.

Related topics:

[WMCSAVE Main Window](#)

[Customize Options Window](#)

[Add Password Window](#)

[Change or Delete Password Window](#)

[Password Check Window](#)

[Choose New Graphic/Picture Window](#)

[Add/Change Text Window](#)

[Update File Include List Window](#)

[Registration Window](#)



## WMCREG Program

The WMCREG program is used to enter the registration code and the registered person's name. After entering a valid registration code, the registered user will no longer receive the "Unregistered Shareware" messages.

The *UPDATE* button will validate the registration code and will write a valid registration code and the registered name to the JREWMC.INI file in the WMC executables directory.

The *EXIT* button will exit the WMCREG program.

Related topics:

[License Agreement](#)

## Save the Current Windows Configuration Now

Checking the "Save the current windows configuration now" option will have the current configuration saved. What files are saved is determined by the *Include File List* and the *Global Include List*. If PROGMAN.INI is in the *Include File List*, then all groups listed in PROGMAN.INI will be saved. If Norton Desktop is the shell, then all QAG files in the windows directory and in the Norton Desktop directory will be saved. This option has four sub-options:

Issue a Save Setting

Update file include list

Only save group information

WMCSTRT handles StartUp Group

## **Issue a Save Settings**

Checking the "Issue a Save Settings" sub-option allows the user to specify whether WMCSAVE will have Program Manager, Norton Desktop, or PC Tools do a "Save Settings", before the Windows configuration is saved. All configuration changes still in memory will be written to the hard drive, before WMCSAVE saves the current Window's configuration.

## Update File Include List

Checking the "Update file include list" sub-option allows the user to modify the *Include File List*. The Include File List determines which files are copied when the configuration is saved/restored. This sub-option and sub-option Only save group information are mutually exclusive. The Update File Include List Window will be displayed for specification of the Include File List.

## Only Save Group Information

Checking the "Only save group information" sub-option allows the user to specify whether this configuration entry will only save group files (\*.GRP and PROGMAN.INI). If only group files are saved, then a restart of Windows is NOT needed when switching to this configuration. Switch between different group layouts easily, quickly and without restarting Windows! This sub-option is only available if the Windows shell program is Program Manager. This sub-option and sub-option Update file include list are mutually exclusive.

### **Note:**

For users of WMC V2.1c or earlier, the following MUST be done before using this sub-option: Restore each of your saved configurations that uses Program Manager as its shell, this is accomplished by using WMCSTRT. Re-save the restored Windows configurations using WMCSAVE/WMCQSAV (V3.0 or later). After all the saved configurations have been re-saved, this sub-option can be used. If this process is not done, unpredictable result will occur when switching to a configuration saved using this sub-option.

## WMCSTRT Handles StartUp Group

Checking the "WMCSTRT handles StartUp Group" sub-option allows the user to specify that only WMCSTRT will be started when Windows starts. Once a configuration entry is chosen from WMCSTRT/WMCQSTR, then that entry's StartUp group programs are started after any necessary saving/restoring of files and restarting of Windows. This sub-option is only available if the Windows shell program is Program Manager. WMC does not handle programs being loaded or run from the WIN.INI RUN= or LOAD= lines.

WMCSTRT: Holding the *SHIFT* key down when selecting a configuration saved with this sub-option will bypass the running of the programs in the StartUp group.

WMCQSTR: The program will issue a prompt to determine if programs in the StartUp group should be run.



## **Save Windows Configuration on Switch**

Checking the "Save windows configuration on switch" option will save the current configuration per the include file lists every time a user switches from using this configuration entry to using a different configuration entry with program DMCSTRT/WMCSTRT/WMCQSTR. This configuration entry will be kept up-to-date automatically. If the configuration changes while using this configuration entry, those changes will be saved automatically to the configuration entry when switching to another configuration entry. Otherwise, the user will need to manually save the configuration, using WMCSAVE/WMCQSAV, anytime a configuration change occurs.

Checking the "Prompt for Save on Switch" option will cause a message box to be displayed prompting whether to save the current configuration every time a user switches from using this configuration entry to using a different configuration entry with program DMCSTRT/WMCSTRT/WMCQSTR.

## **Issue a Save Settings on Switch**

Checking the "Issue a Save Settings on Switch" sub-option allows the user to specify whether WMCSTRT/WMCQSTR will have Program Manager, Norton Desktop, or PC Tools do a "Save Settings" before saving the current configuration on a switch. This process will write out any configuration changes from memory to the hard drive, before WMCSTRT/WMCQSTR saves the then current windows configuration. WMCSTRT must have the /n flag set to issue the Save Settings command.

## **Reboot DOS on Switch**

Checking the "Reboot DOS after Switch from Configuration" option will cause the PC to be rebooted every time a user switches from this configuration entry to a different configuration entry with program DMCSTRT/WMCSTRT/WMCQSTR.

Checking the "Reboot DOS after Switch to Configuration" option will cause the PC to be rebooted every time a user switches to this configuration entry from a different configuration entry with program DMCSTRT/WMCSTRT/WMCQSTR.

Checking the "Prompt for Reboot..." option will cause a message box to be displayed prompting whether to perform the Reboot of DOS after the configurations are switched with program DMCSTRT/WMCSTRT/WMCQSTR.

## **Change the Text Description**

Checking the "Change the text description" option allows the user to change the text description for the configuration entry.

## **Use a Different Graphic/Picture**

Checking the "Use a different graphic/picture" option allows the user to change the picture being used for the configuration entry.

## **Add/Change/Delete a Password**

Checking the "Add/Change/Delete a password" option allows the user to add/change/delete a password for the configuration entry.

## **Inactive Entries Visible on WMCSTRT Window**

Checking the "Inactive entries visible on WMCSTRT window" option allows the user to specify if inactive entries will be displayed on the WMCSTRT window. Leaving this option unchecked will make inactive entries invisible on the WMCSTRT window.



## **WMCQSAV Program**

The WMCQSAV program is used to quickly save the current Windows configuration to the current WMC configuration entry. WMCQSAV can also be used to issue a Save Settings command to Program Manager or PC Tools, or issue a Save Configuration command to Norton Desktop for Windows. WMCQSAV does not allow you to change configuration options, to change configuration options use WMCSAVE, instead.

WMCQSAV can be placed in the StartUp group so it can be accessed quickly when a Save Settings and/or a save Windows configuration is needed.

WMCQSAV will accept two command line switches: /c and /s. The "/c" switch causes WMCQSAV to perform a "Save Windows Configuration". The "/s" switch causes WMCQSAV to perform a "Save Settings" for Program Manager or PC Tools or a "Save Configuration" for NDW. Both switches may be used. If any switch is used, then WMCQSAV will not display the "Quick Save" Window.





## WMCSTRT Program

The WMCSTRT program is used to restore a saved configuration. WMCSTRT should be placed in the StartUp group, if DMCSTRT is not being used.

If there are active configuration entries when WMCSTRT runs, WMCSTRT will display a configuration selection window. If there are no active configuration entries when WMCSTRT runs, WMCSTRT will end without displaying a configuration selection window.

WMCSTRT will accept three command line switches: /d, /n, and /r. The "/d" switch causes WMCSTRT to always display the configuration selection window, unless there are no active configuration entries. Do NOT use "/d" when WMCSTRT is in the StartUp group as WMCSTRT will not work properly. Do use "/d" when WMCSTRT is in any other group, otherwise WMCSTRT will display the configuration selection window on every other run of WMCSTRT. The "/n" switch lets the user exit WMCSTRT without selecting a configuration entry. Without the "/n" switch, WMCSTRT takes complete control of Windows and does not allow exit until a configuration entry is selected. The "/r" switch causes WMCSTRT to refresh the Windows desktop with the current active configuration. The refresh may be needed due to accidental deletion of a group. Previously, you would have had to switched to another configuration then switched back to refresh the Windows desktop. The "/d" and "/n" switches can be used together. The "/r" switch should **not** be used with other two switches.

WMCSAVE is the counter-part to WMCSTRT. WMCSAVE saves different configurations.

Related topics:

[WMCSTRT Main Window](#)



## WMCSTRT Main Window

The main window of the WMCSTRT program allows the selection of a configuration entry to use from up to one-hundred, previously-saved configuration entries. The active configuration selection has its text box background color different than the other 100 selections' background color.

WMCSTRT displays ten configurations per page. Press the 0-to-9 PAGE buttons to display all 100 configurations.

Clicking with the left mouse button on any of the active entries (pictures) will restore that configuration. If the selected configuration was saved with the "Only save group information" sub-option unchecked, then Windows will be restarted. If the entry selected was the configuration entry last used by Windows, then the StartUp group programs are started if the configuration was saved with the "WMCSTRT handle StartUp Group" sub-option checked.

If the *SHIFT* key is held down when selecting a configuration saved with the "WMCSTRT handle StartUp Group" sub-option checked, then the StartUp group programs will not be run.

If an entry is password protected, a prompt for the password is done. If the password entered is correct, then the configuration entry is restored. A total of three try's are allowed to enter the correct current password for the configuration entry.

If the "Inactive entries visible on WMCSTRT window" is on, all entries are displayed, even inactive ones. Clicking on inactive entries has no effect. If the "Inactive entries visible on WMCSTRT window" flag is off, only active entries are displayed.

## DMCSTRT Program

The DMCSTRT program is used to restore a saved configuration from native DOS, is used as an alternative to WMCSTRT, and MUST be used if PC Tools for Windows is the Window's shell. If you place DMCSTRT in the AUTOEXEC.BAT file before the start of Windows, then you should remove WMCSTRT from the Windows Start-up group.

If there are active configuration entries when DMCSTRT runs, DMCSTRT will display a configuration selection window. If there are no active configuration entries when DMCSTRT runs, DMCSTRT will end without displaying a configuration selection window.

DMCSTRT will accept two command line switches: "/aa" and "/r". Switch "/aa" specifies which configuration entry to use, where 'aa' specifies a saved configuration entry. Saved configuration entries are numbered from 0 to 99. This is useful if you have MS-DOS Version 6 and use its multiple DOS configurations capability. The "/r" switch causes DMCSTRT to refresh the Windows desktop with the current active configuration. The refresh may be needed due to accidental deletion of a group. Previously, you would have had to switched to another configuration then switched back to refresh the Windows desktop. The "/aa" and "/r" switches should never be specified at the same time.

!!!IMPORTANT!!!!

Before using DMCSTRT, you must issue the following commands from the DOS prompt:

```
SET WMCPATH=xxx      (where xxx is the drive and directory of WMC.)  
SET WMCWINPATH=yyy   (where yyy is the drive and directory of Windows.)
```

Example:

```
SET WMCPATH=C:\JREWMC5  
SET WMCWINPATH=C:\WINDOWS
```

You may want to put this command in your AUTOEXEC.BAT file, so it is issued every time DOS is started.

Related topics:

[DMCSTRT Main Window](#)

## DMCSTRT Main Window

The main window of the DMCSTRT program allows the selection of a configuration entry to use from up to one-hundred, previously-saved configuration entries. The DMCSTRT window will display ten configurations per page. Press the 0-to-9 PAGE buttons to see all one-hundred configurations. The active configuration entry has its text box background color different than the other 100 entry's' background color.

Pressing ENTER, on any of the active entries will restore that configuration. If an entry is password protected, a prompt for the password is done. If the password entered is correct, then the configuration entry is restored. A total of three try's are allowed to enter the correct current password for the configuration entry.

If the "Inactive entries visible on WMCSTRT window" is on, all entries are displayed, even inactive ones. Clicking on inactive entries has no effect. If the "Inactive entries visible on WMCSTRT window" flag is off, only active entries are displayed.

Examples:

To run DMCSTRT, type from the DOS command prompt:

```
DMCSTRT
```

To automatically select configuration 0, type from the DOS command prompt:

```
DMCSTRT /0
```

To automatically select configuration 76, type from the DOS command prompt:

```
DMCSTRT /76
```

To automatically refresh the Windows desktop with the current active configuration, type from the DOS command prompt:

```
DMCSTRT /r
```



## WMCQSTR Program

The WMCQSTR program is used to switch between two saved configurations, without having to bring up the WMCSTRT Window. WMCQSTR requires a command line switch that specifies which configuration entries to switch between. The command line switch should be in the form "/aa/bb", where aa specifies one saved configuration entry and bb specifies another saved configuration entry. Saved configuration entries are numbered from 0 to 99.

WMCQSTR will issue a prompt to determine if programs in the StartUP group should be run.

Create as many of these Program Items as needed to flop between configuration entries at the double-click of the left mouse button.

Examples:

To switch between configurations 0 and 38, make the command line:

```
WMCQSTR /0/38
```

To switch between configurations 11 and 12, make the command line:

```
WMCQSTR /11/12
```



## WMCCOPY Program

The WMCCOPY program is used to copy Program Manager groups from one configuration to another configuration. This program provides an easy method to replicate group information across multiple saved configurations. New software products no longer have to be installed into each saved configuration. Install new software in one configuration, then copy the software's Program Manager group to the rest of the configurations with WMCCOPY.

WMCCOPY only supports configurations that use Program Manager as the Windows Desktop.

Select the configuration to copy from by using the scroll bar until the correct configuration is displayed in the box. All the Program Manager groups contained by the configuration will be displayed. Select the group(s) to be copied. Multiple groups can be selected by holding the *CTRL* or the *SHIFT* key down while clicking on additional groups.

Select the configuration(s) to copy the groups to. Multiple configurations can be selected by holding the *CTRL* or the *SHIFT* key down while clicking on additional configurations.

Press the *Copy Group* button. If the group already exists in the configuration being copied to, then the group will be replaced. If the group does not exist, it will be added. WMCCOPY will not allow groups to be copied where the 'copy from' configuration and the 'copy to' configuration are the same configuration.

## **Fonts Menu Item**

The fonts item will display the sub-list:

- Button

- Fields

- Labels

Click on the item for which you want to modify font defaults. This will display the standard Windows Font Selection box. Your choices will be applied immediately and will be saved automatically. The next time you use Win Multiple Configurations, these new font defaults will be used.

## **Global Include List Menu Item**

The "Global Include List" menu item allows the user to modify the *Global Include List* of files. The Global Include List determines which files are copied for all configurations when the configurations are saved/restored. This is in addition to any files specified to be included by the *Include File List* for a specific configuration. The Update File Include List Window will be displayed for specification of the Global Include List.



## About Menu Item

Displays the About Window, which gives the copyright notice and the release number for Win Multiple Configurations. This item is found on the main form of program WMCSAVE by choosing the HELP menu item.

## **Fonts Menu Item**

The fonts item will display the sub-list:

- Button
- Fields
- Labels

Click on the item for which you want to modify font defaults. This will display the standard Windows Font Selection box. Your choices will be applied immediately and will be saved automatically. The next time you use Win Multiple Configurations, these new font defaults will be used.

## **Global Include List Menu Item**

The "Global Include List" menu item allows the user to modify the *Global Include List* of files. The Global Include List determines which files are copied for all configurations when the configurations are saved/restored. This is in addition to any files specified to be included by the *Include File List* for a specific configuration.

## **About Menu Item**

Displays the About Window, which gives the copyright notice, the version.release number, and the registration status for Win Multiple Configurations. This item is found on the main form of program WMCSAVE by choosing the HELP menu item.

## **Registration Menu Item**

Displays the Registration Window, which is used to enter your name and registration number. This item is found on the main form of program WMCSAVE by choosing the FILE menu item.

## **Save the Current Windows Configuration Now**

Checking the "Save the current windows configuration now" option will have the current configuration saved. What files are saved is determined by the *Include File List* and the *Global Include List*. If PROGMAN.INI is in the *Include File List*, then all groups listed in PROGMAN.INI will be saved. If Norton Desktop is the shell, then all QAG files in the windows directory and in the Norton Desktop directory will be saved.

## **Issue a Save Settings**

Checking the "Issue a Save Settings" sub-option allows the user to specify whether WMCSAVE will have Program Manager, PC Tools or Norton Desktop do a "Save Settings", before the Windows configuration is saved. All configuration changes still in memory will be written to the hard drive, before WMCSAVE saves the current Window's configuration.

## **Update File Include List**

Checking the "Update file include list" sub-option allows the user to modify the *Include File List*. The include file list determines which files are copied when the configuration is saved/restored. This sub-option and sub-option "Only save group information" are mutually exclusive.



## **Only Save Group Information**

Checking the "Only save group information" sub-option allows the user to specify whether this configuration entry will only save group files (\*.GRP and PROGMAN.INI). If only group files are saved, then a restart of Windows is NOT needed when switching to this configuration. Switch between different group layouts easily, quickly and without restarting Windows! This sub-option is only available if the Windows shell program is Program Manager. This sub-option and sub-option "Update file include list" are mutually exclusive.

### **Note:**

For users of WMC V2.1c or earlier, the following MUST be done before using this sub-option: Restore each of your saved configurations that uses Program Manager as its shell, this is accomplished by using WMCSTRT. Re-save the restored Windows configurations using WMCSAVE/WMCQSAV (V3.0 or later). After all the saved configurations have been re-saved, this sub-option can be used. If this process is not done, unpredictable result will occur when switching to a configuration saved using this sub-option.

## **WMCSTRT Handles StartUp Group**

Checking the "WMCSTRT handles StartUp Group" sub-option allows the user to specify that only WMCSTRT will be started when Windows starts. Once a configuration entry is chosen from WMCSTRT/WMCQSTR, then that entry's StartUp group programs are started after any necessary saving/restoring of files and restarting of Windows. This sub-option is only available if the Windows shell program is Program Manager. WMC does not handle programs being loaded or run from the WIN.INI RUN= or LOAD= lines.

**WMCSTRT:** Holding the *SHIFT* key down when selecting a configuration saved with this sub-option will bypass the running of the programs in the StartUp group.

**WMCQSTR:** The program will issue a prompt to determine if programs in the StartUp group should be run.

## **Save Windows Configuration on Switch**

Checking the "Save windows configuration on switch" option will save the current configuration per the include file list every time a user switches from using this configuration entry to using a different configuration entry with program DMCSTRT/WMCSTRT/WMCQSTR. This configuration entry will be kept up-to-date automatically. If the configuration changes while using this configuration entry, those changes will be saved automatically to the configuration entry when switching to another configuration entry. Otherwise, the user will need to manually save the configuration, using WMCSAVE/WMCQSAV, anytime a configuration change occurs.

Checking the "Prompt for Save on Switch" option will cause a message box to be displayed prompting whether to save the current configuration every time a user switches from using this configuration entry to using a different configuration entry with program DMCSTRT/WMCSTRT/WMCQSTR.

## **Issue a Save Settings on Switch**

Checking the "Issue a Save Settings on Switch" sub-option allows the user to specify whether WMCSTRT/WMCQSTR will have Program Manager, PC Tools or Norton Desktop do a "Save Settings" before saving the current configuration on a switch. This process will write out any configuration changes from memory to the hard drive, before WMCSTRT/WMCQSTR saves the then current windows configuration. WMCSTRT must have the /n flag set to issue the Save Settings command.

## **Reboot DOS on Switch**

Checking the "Reboot DOS after Switch from Configuration" option will cause the PC to be rebooted every time a user switches from using this configuration entry to using a different configuration entry with program DMCSTRT/WMCSTRT/WMCQSTR.

Checking the "Reboot DOS after Switch to Configuration" option will cause the PC to be rebooted every time a user switches to this configuration entry after using a different configuration entry with program DMCSTRT/WMCSTRT/WMCQSTR.

Checking the "Prompt for Reboot..." option will cause a message box to be displayed prompting whether to perform the Reboot of DOS after the configurations are switched with program DMCSTRT/WMCSTRT/WMCQSTR.

## **Change the Text Description**

Checking the "Change the text description" option allows the user to change the text description for the configuration entry.

## **Use a Different Graphic/Picture**

Checking the "Use a different graphic/picture" option allows the user to change the picture being used for the configuration entry.

## **Add/Change/Delete a Password**

Checking the "Add/Change/Delete a password" option allows the user to add/change/delete a password for the configuration entry.



## **Inactive Entries Visible on WMCSTRT Window**

Checking the "Inactive entries visible on WMCSTRT window" option allows the user to specify if inactive entries will be displayed on the WMCSTRT window. Leaving this option unchecked will make inactive entries invisible on the WMCSTRT window.

## **Compress Menu Item**

The "Compress" menu item allows the user to specify whether to compress configurations and where PKZIP/PKUNZIP can be located. The Compress Options Window will be displayed for specification of the compress options.



## WCHG Program

Win Change consists of: three functions: Change Text, Find Text, and Find File Types. Change Text provides an easy method to globally change data in INI, PIF, GRP, and other files across multiple drives, including network drives. Find Text provides an easy method to globally find text data within any type of files. Find File Types provides an easy method to find files by file type(s).

Pressing the *Change Text* button will display the Change Text Window consisting of these folder items:

The *Specify Changes* folder item is where text change criteria can be entered. Multiple change criteria can be entered. Change criteria must be specified before other folder items can be used.

The *Find Files* folder item is where drives, directories, and file types are specified. Then, all files matching the change criteria, for the specified drives, directories and file types, will be listed. Files must be found before the *Apply Changes* folder item can be used.

The *Apply Changes* folder item is where all found files are changed according to the change criteria. Options concerning the creation back out files and whether to modify 'read only' files are specified here, too.

The *Backout Changes* folder item is where back out files can be selected and restored, thus undoing any changes done by the *Apply Changes* process. Back out files can also be deleted.

**Note:** Certain types of files contain internal checksums. If these files are changed, they may become invalid. Norton Desktop for Windows QAG files and Program Manager GRP files are two examples. Win Change handles GRP files and will update their internal checksum. QAG files should NOT be changed using Win Change, nor should any other type of file containing internal checksums be modified by Win Change. **Always create back out files!!!**

Pressing the *Find Files by Text* button will bring up the Find Files by Text Window consisting of these folder items:

The *Specify Find Text* folder item is where the find text criteria is entered. Multiple find criteria can be entered. Find criteria must be specified before the *Find Files* folder item can be used.

The *Find Files* folder item is where drives, directories, and file types are specified. Then, all files matching the find criteria, for the specified drives, directories and file types, will be listed.

Pressing the *Find Files by Type* button will display the Find Files by Type Window where drives, directories, and file types are selected for processing. All files matching the file types, for the specified drives and directories, will be listed.

Pressing the *Help* button will display this help file.

Pressing the *Exit* button will close the active window.

The File menu item provides the ability to display the Change Text Window, Find Files by Text Window, and the Find Files by Type Window. Clicking on the Exit menu item will terminate Win Change. The Options menu item provides the ability to change the fonts being used, enable or disable the minimize on use function, and to invoke the registration process. The Help menu item provides the ability to display the about window, which gives the copyright notice and version/release number for Win Change.



## Change Text Window

The *Change Text Window* consists of the following four folders: Specify Changes, Find Files, Apply Changes, and Backout Changes. A folder can be displayed by clicking on the tab for the folder. Change criteria must be specified first, before the Find Files folder is available to be selected. The Find Files process, the specification of drives, directories, file types and finding files, must be done before the Apply Changes folder is available to be selected. Changes must have been applied before the Back Out Changes folder is available to be selected.

The Specify Changes folder item is where text change criteria is entered. Multiple change criteria can be entered. Change criteria must be specified before the *Find Files* folder item can be selected.

The Find Files folder item is where drives, directories, and file types are specified. Then, all files matching the change criteria, for the specified drives, directories and file types, will be listed. Files must be found before the *Apply Changes* folder item can be used.

The Apply Changes folder item is where all found files are changed according to the change criteria. Options concerning the creation back out files and whether to modify 'read only' files are specified here, too.

The Backout Changes folder item is where back out files can be selected and restored, thus undoing any changes done by the *Apply Changes* process. Back out files can also be deleted from this folder.

**Note:** Certain types of files contain internal checksums. If these files are changed, they may become invalid. Norton Desktop for Windows QAG files and Program Manager GRP files are two examples. Win Change handles GRP files and will update their internal checksum. QAG files should NOT be changed using Win Change, nor should any other type of file containing internal checksums be modified by Win Change. **Always create back out files!!!**

## Specify Changes Folder

The *Specify Changes* folder allows multiple change criteria to be entered. A maximum length of 149 characters is allowed. 'Change From' text must be specified, i.e. have a minimum length of one. 'Change To' text can be blank, i.e. have minimum length of zero.

The "Ignore case" checkbox determines whether a case-sensitive search is done. When checked, the default, Win Change does a case-insensitive search when searching for the "Change from" string in files. For example, an upper case "A" equals a lower case "a". When unchecked, Win Change does a case-sensitive search. For example, an upper case "A" does NOT equal a lower case "a". Click on the "Ignore case" checkbox to toggle between checked and unchecked. Win Change will use the case of the "Change to" string when updating.

To delete change criteria, double click on the criteria in either list box ("Change from" or "Change to").

## Find Files Folder

The *Find Files* folder allows drives, directories, and file types to be selected for processing. Once selected, a list of all files which contain text strings that match any one of the "Change from" text strings will be produced.

Step 1: Select the drives you wish to search. By default, only local drives are selected. To select/unselect a drive, click on the drive letter. A drive is selected when it is highlighted.

**Optional:** Specify a directory:\drive to use for the Quick Build process.

Step 2: Press the *Build Dir List* button to get a list of all directories on the selected drives. This process may take some time to do. Having *Minimize on Use* will cause Win Change to minimize while the directory list is built. **Optional:** Press the *Quick Build* button to get a list of all sub-directories for the specified drive:\directory.

Step 3: Select the directories you wish to search. By default, all directories are selected. To select/unselect a directory, click on the directory name. To select/unselect a directory and all of its associated sub-directories, double-click on the directory name. A directory is selected when it is highlighted.

Step 4: Enter the file types you wish to search. Multiple file types can be entered. By default, the following file types are searched: \*.INI, \*.GRP, \*.PIF. To delete a file type from the list, double click on it.

Step 5: Press the *Find Files* button to search for all files that contain one or more of the specified "Change from" text strings. A list of all files that have a match will be produced. This process may take some time to do. Having *Minimize on Use* will cause Win Change to minimize while the found file list is built.

Step 6: Select the found files you wish to change. By default, all found files are selected. To select/unselect a found file, click on the file name. A file is selected when it is highlighted. At this point, the Apply Changes folder can be selected to apply the changes per the specified change criteria. To view or edit a file, double-click on the file name. Files can be copied, moved or deleted by pressing on the *Drive* button or the *Toilet* button, respectively.

To copy or move files, select the files to be processed, then click on the *Drive* button. The *Copy or Move Selected Files Window* will appear, select the destination drive and directory for the copy/move and then press the *Copy Files* or *Move Files* button. Press the *Exit* button to exit the window.

To delete files, select the files to be processed, then click on the *Toilet* button. A prompt will appear to verify whether to delete the selected files. Choose *OK* to delete the files, *Cancel* to abort the delete process.

## Apply Changes Folder

The *Apply Changes* folder allows the user to select whether to create back out files and whether files with the 'read only' attribute on will be modified. By default, the create back out files option is selected, the modify 'read only' files is not selected.

Pressing the *Apply Changes* button will apply the change criteria to all selected found files. This process may take some time to do. Having *Minimize on Use* will cause Win Change to minimize while the files are changed. Win Change will issue a prompt to restart Windows. If you manually restart Windows, then turn off "Save Settings on Exit" if it is on, before exiting Windows. Otherwise, any changes to \*.GRP files may be overwritten by Windows.

**Note:** Certain types of files contain internal checksums. If these files are changed, they may become invalid. Norton Desktop for Windows QAG files and Program Manager GRP files are two examples. Win Change handles GRP files and will update their internal checksum. QAG files should NOT be changed using Win Change, nor should any other type of file containing internal checksums be modified by Win Change. **Always create back out files!!!**



## Backout Changes Folder

The *Backout Changes* folder allows the user to select which back out files to restore. If problems occur after changes are applied, this process will restore the files back to their original state. By default, all back out files are selected. To select/unselect a back out file, click on the file name. A file is selected when it is highlighted.

Pressing the *Backout Changes* button will undo any and all changes made to the selected files. This process may take some time to do. Having *Minimize on Use* will cause Win Change to minimize while the files are being restored. Win Change will issue a prompt to restart Windows. If you manually restart Windows, then turn off "Save Settings on Exit" if it is on, before exiting Windows. Otherwise, any changes to \*.GRP files may be overwritten by Windows.

Pressing the *Delete All Backout Files* button will delete all backout files. Once done, Win Change will no longer be able to backout its changes. The deleting of the backout files may need to be done to free-up disk space. Backout files are copies of all files changed by Win Change, before the changes were made.



## Find Files by Text Window

The *Find Files by Text Window* consists of the following two folders: Specify Find Text, and Find Files. A folder can be displayed by clicking on the tab for the folder. Find Text criteria must be specified first, before the Find Files folder is available to be selected.

The Specify Find Text folder item is where the find text criteria is entered. Multiple find criteria can be entered. Find criteria must be specified before the *Find Files* folder item can be used.

The Find Files folder item is where drives, directories, and file types are specified. Then, all files matching the find criteria, for the specified drives, directories and file types, will be listed.

## Specify Find Text Folder

The *Specify Find Text* folder allows multiple find criteria to be entered. A maximum length of 149 characters is allowed.

The "Ignore case" checkbox determines whether a case-sensitive search is done. When checked, the default, Win Change does a case-insensitive search when searching for the "Change from" string in files. For example, an upper case "A" equals a lower case "a". When unchecked, Win Change does a case-sensitive search. For example, an upper case "A" does NOT equal a lower case "a". Click on the "Ignore case" checkbox to toggle between checked and unchecked.

To delete find criteria, double click on the criteria in the list box.

## Find Files Folder

The *Find Files* folder allows drives, directories, and file types to be selected for processing. Once selected, a list of all files which contain text strings that match any one of the "Find" text strings will be produced.

Step 1: Select the drives you wish to search. By default, only local drives are selected. To select/unselect a drive, click on the drive letter. A drive is selected when it is highlighted.

**Optional:** Specify a directory:\drive to use for the Quick Build process.

Step 2: Press the *Build Dir List* button to get a list of all directories on the selected drives. This process may take some time to do. Having *Minimize on Use* will cause Win Change to minimize while the directory list is built. **Optional:** Press the *Quick Build* button to get a list of all sub-directories for the specified drive:\directory.

Step 3: Select the directories you wish to search. By default, all directories are selected. To select/unselect a directory, click on the directory name. To select/unselect a directory and all of its associated sub-directories, double-click on the directory name. A directory is selected when it is highlighted.

Step 4: Enter the file types you wish to search. Multiple file types can be entered. By default, the following file types are searched: \*.INI, \*.GRP, \*.PIF. To delete a file type from the list, double click on it.

Step 5: Press the *Find Files* button to search for all files that contain one or more of the specified "Find" text strings. A list of all files that have a match will be produced. This process may take some time to do. Having *Minimize on Use* will cause Win Change to minimize while the found file list is built.

Step 6: Select the found files you wish to change. By default, all found files are selected. To select/unselect a found file, click on the file name. A file is selected when it is highlighted. To view or edit a file, double-click on the file name. Files can be copied, moved or deleted by pressing on the *Drive* button or the *Toilet* button, respectively.

To copy or move files, select the files to be processed, then click on the *Drive* button. The *Copy or Move Selected Files Window* will appear, select the destination drive and directory for the copy/move and then press the *Copy Files* or *Move Files* button. Press the *Exit* button to exit the window.

To delete files, select the files to be processed, then click on the *Toilet* button. A prompt will appear to verify whether to delete the selected files. Choose *OK* to delete the files, *Cancel* to abort the delete process.



## Find Files by Type Window

The *Find Files by Type* window allows drives, directories, and file types to be selected for processing.

Step 1: Select the drives you wish to search. By default, only local drives are selected. To select/unselect a drive, click on the drive letter. A drive is selected when it is highlighted.

**Optional:** Specify a directory:\drive to use for the Quick Build process.

Step 2: Press the *Build Dir List* button to get a list of all directories on the selected drives. This process may take some time to do. Having *Minimize on Use* will cause Win Change to minimize while the directory list is built. **Optional:** Press the *Quick Build* button to get a list of all sub-directories for the specified drive:\directory.

Step 3: Select the directories you wish to search. By default, all directories are selected. To select/unselect a directory, click on the directory name. To select/unselect a directory and all of its associated sub-directories, double-click on the directory name. A directory is selected when it is highlighted.

Step 4: Enter the file types you wish to search. Multiple file types can be entered. By default, the following file types are searched: \*.INI, \*.GRP, \*.PIF. To delete a file type from the list, double click on it.

Step 5: Press the *Find Files* button to create a list of all files. Having *Minimize on Use* will cause Win Change to minimize while the found file list is built.

Step 6: Select the found files you wish to change. By default, all found files are selected. To select/unselect a found file, click on the file name. A file is selected when it is highlighted. To view or edit a file, double-click on the file name. Files can be copied, moved or deleted by pressing on the *Drive* button or the *Toilet* button, respectively.

To copy or move files, select the files to be processed, then click on the *Drive* button. The *Copy or Move Selected Files Window* will appear, select the destination drive and directory for the copy/move and then press the *Copy Files* or *Move Files* button. Press the *Exit* button to exit the window.

To delete files, select the files to be processed, then click on the *Toilet* button. A prompt will appear to verify whether to delete the selected files. Choose *OK* to delete the files, *Cancel* to abort the delete process.



## **Copy or Move Selected Files Window**

The *Copy or Move Selected Files* window allows the user to specify where the selected files will be copied and/or moved. Select the appropriate drive and directory, then press either the *Copy Files* button or the *Move Files* button.

Pressing the *Exit* button will close the window.

## **Fonts Menu Item**

The fonts item will display the sub-list:

- Button
- Fields
- Labels

Click on the item for which you want to modify font defaults. This will display the standard Windows Font Selection box. Your choices will be applied immediately and will be saved automatically. The next time you use Win Change, these new font defaults will be used.

### **Minimize on Use Menu Item**

This menu item displays a check when "Minimize on Use" is enabled. Clicking on the menu item will toggle between checked and unchecked. When the menu item displays "Minimize on Use", Win Change will be minimized whenever a lengthy process occurs, such as building the directory list, finding files, or changing files.







