



## THE BRIDGE TIMBER CD PLAYER v5.0 FOR WINDOWS 95

### CONTENTS

[Eject](#)  
[Exit](#)  
[Keyboard Shortcut Keys](#)  
[Load](#)  
[Next](#)  
[Pause](#)  
[Play](#)  
[Position Scroll Bar](#)  
[Preferences](#)  
[Previous](#)  
[Program](#)  
[Program Window](#)  
[Skip To List](#)  
[Stop](#)  
[Titles](#)  
[Titles Window](#)  
[Volume Command](#)



## CONTROLS: PLAY



The PLAY control is engaged by selecting Play from the Controls menu, pressing the Play button, pressing ALT-P, or pressing CTRL-P. In normal play mode this control will play the tracks on a compact disc sequentially until it reaches the end of the disc. When the program list in the program window contains tracks either selected by the user or randomly selected by the shuffle command, the play control will play the tracks in the order in which they appear on the program list. Once a track begins to play, it is removed from the top of the list.



## CONTROLS: NEXT



The NEXT control is engaged by selecting Next from the Controls menu, pressing the Next (>I) button, pressing ALT-N, or pressing CTRL-N. It is used while a disc is playing to jump to the track immediately following the current track. This control is only available during the normal play mode. It cannot be used while a program list is playing.



## **CONTROLS: PREVIOUS**



The PREVIOUS control is engaged by selecting Previous from the Controls menu, pressing the Previous (I<) button, pressing ALT-R, or pressing CTRL-R. It is used while a disc is playing to jump to the beginning of the current track the first time it is selected, and to the beginning of the track preceding the current track if it is immediately selected again. This control is only available during the normal play mode. It cannot be used while a program list is playing.



## **CONTROLS: PAUSE**



The PAUSE control is engaged by selecting Pause from the Controls menu, pressing the Pause (II) button, pressing ALT-A, or pressing CTRL-A. During normal play mode, it is used to temporarily stop the playing of a compact disc at the current position so that play can be resumed from the same position. If selected while a program list is being played, play will resume from the beginning of the next track on the program list.

 **CONTROLS: STOP**

The STOP control is engaged by selecting Stop from the Controls menu, pressing the Stop button, pressing ALT-S, or pressing CTRL-S. During normal play mode, it is used to halt the play of a disc. If selected while a program list is being played, play will resume from the beginning of the next track on the program list.



## CONTROLS: LOAD



The LOAD control is engaged by selecting Load from the Controls menu, pressing the Load button, pressing ALT-L, or pressing CTRL-L. If the CD Player program is loaded before a compact disc is placed into the drive or if a disc is changed while the program is running, the user will be prompted to select the load control so the track information can be updated.



## CONTROLS: EJECT



The EJECT control is engaged by selecting Eject from the Controls menu, pressing the Eject button, pressing ALT-E, or pressing CTRL-E. It is used to open the drive door so the disc can be removed. Note: Some CD-ROM drives do not support the use of the Eject control.



 **CONTROLS: PROGRAM**

The PROGRAM control is engaged by selecting Program from the Controls menu, pressing the Program button, pressing ALT-O, or pressing CTRL-O. It is used to open the program window.

 **CONTROLS: TITLES**

The TITLES control is engaged by selecting Titles from the Controls menu, pressing the Titles button, pressing ALT-T, or pressing CTRL-T. It is used to open the titles window.

 **CONTROLS: EXIT**

The EXIT control is engaged by selecting Exit from the Controls menu, pressing the Exit button, pressing ALT-X, or pressing CTRL-X. This command closes the Bridge Timber CD Player program.

## **CONTROLS: PREFERENCES**

### **VOLUME**

The VOLUME control is engaged by selecting Volume Control from the Preferences menu. It is used to select the path and file name of the sound cards volume control, the file that will be executed whenever the volume command button is pressed. For example, the volume control file for Windows 95 may have a path that looks like this: C:\WINDOWS\SNDVOL32.EXE.

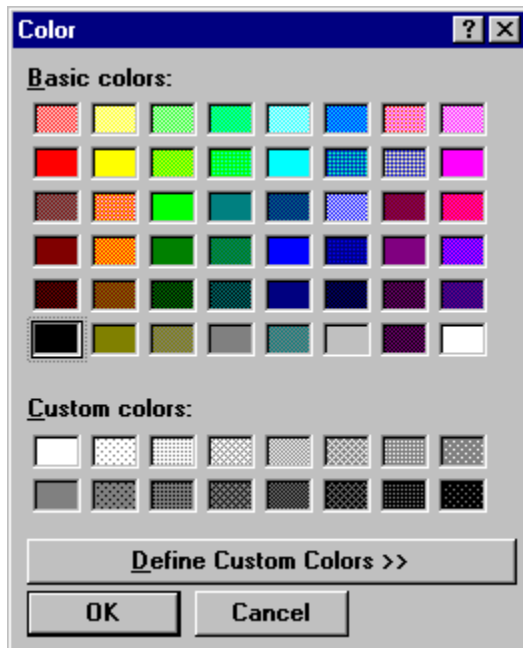
### **AUTO PLAY**

When selected, a CD will begin to play as soon as it is loaded.

### **256 COLOR DISPLAY**

The 256 Color Display control toggles the display between 256 and 16 colors.

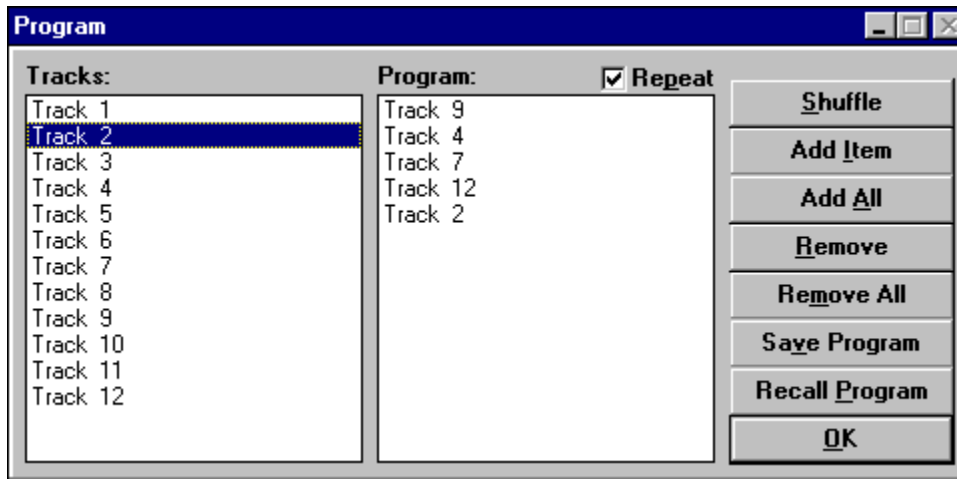
### **COLORS**



The COLORS control is engaged by selecting Colors from the Preferences menu. It is used to select the colors of the background and the disc image in the main window. This option is not available when the 256 color display is in use.



## PROGRAM WINDOW



### TRACKS LIST

This is a list of all the tracks on the disc. By double-clicking a track or selecting a track and pressing the Add button, the selection will be added to the Program List. A track can be added to the Program List more than once.

### PROGRAM LIST

This is a list of the tracks that have either been selected from the Tracks List, added in random order with the Shuffle command, or recalled from the Saved Program data file. By double-clicking a track or selecting a track and pressing the Remove button, the selection will be deleted from the Program List. Press the Remove All button to remove all the tracks in the Program List.

### SHUFFLE

This command will select all of the tracks from the Tracks List and add them to the Program List in random order.

### SAVE PROGRAM

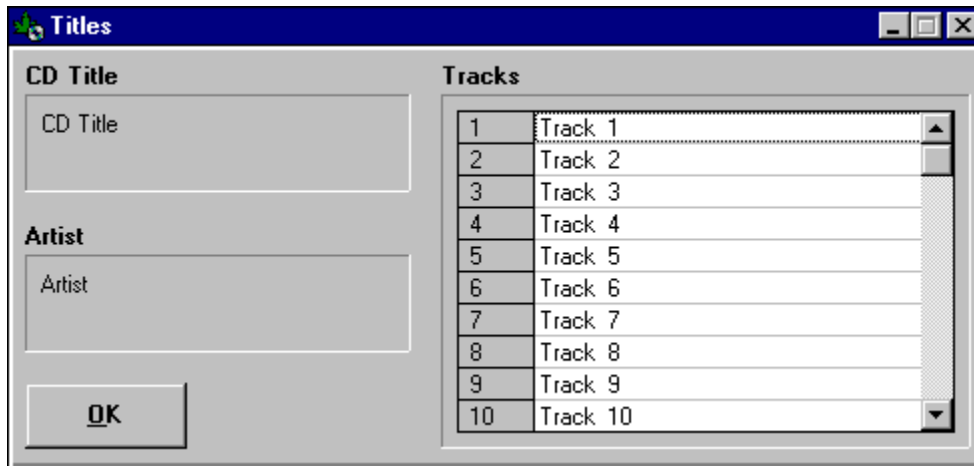
This command saves the tracks in the data file as they appear in the Program List. The stored program can be reloaded by pressing the Recall Program button.

### RECALL PROGRAM

This command recalls the last saved program for the current CD and places it in the Program List.

### REPEAT

Selecting Repeat will cause all the tracks to repeat as they appear in the Program List.

 **TITLES WINDOW**

The screenshot shows a window titled "Titles" with a blue title bar. On the left, there are two text input fields: "CD Title" and "Artist", with an "OK" button below them. On the right, there is a "Tracks" list with 10 rows, each containing a track number and a track name.

Tracks	
1	Track 1
2	Track 2
3	Track 3
4	Track 4
5	Track 5
6	Track 6
7	Track 7
8	Track 8
9	Track 9
10	Track 10

**CD TITLE**

Enter the name of the CD in this box.

**ARTIST**

Enter the name of the recording artist in this box.

**TRACKS**

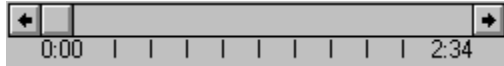
The Tracks list is used to edit the titles of the songs on the CD.

 **CONTROLS: VOLUME**

The Volume command is engaged by pressing the Volume button, or by pressing ALT-V. This command is used to load the volume control program for the sound card. The path and file name for the sound cards volume control can be set by selecting the Volume Control from the preferences menu.



## POSITION SCROLL BAR



During normal play mode, the position scroll bar serves as an indicator of the elapsed time of the current track as it moves across the disc. It can also be used to move to another location in the current track by sliding the button with the mouse. If a program list is playing the bar still works as a time indicator, but the slide function is not available.



 **SKIP TO LIST**

This drop-down list can be used to jump to the beginning of any track on the disc. Drop the list down, select a track and play will begin automatically.



## KEYBOARD SHORTCUT KEYS

ALT-A Pause  
ALT-C Controls Menu  
ALT-E Eject  
ALT-L Load  
ALT-N Next  
ALT-O Program  
ALT-P Play  
ALT-R Previous  
ALT-S Stop  
ALT-T Titles Control  
ALT-V Volume Control  
ALT-X Exit

CTRL-A Pause  
CTRL-E Eject  
CTRL-L Load  
CTRL-N Next  
CTRL-O Program  
CTRL-P Play  
CTRL-R Previous  
CTRL-S Stop  
CTRL-T Titles Control  
CTRL-X Exit

