

*Odometer<sup>®</sup> for Windows*

Copyright © 1992,93,94,95

**Simple Solutions, Inc.**

**Comuserve Shareware Registration ID: 6107 (go swreg)**

## **Contents**

[What is Odometer for Windows?](#)

[A Word About Shareware](#)

[License Agreement](#)

## **How To...**

[Register Odometer](#)

[Use Odometer](#)

[Display the Popup Calendar](#)

[Display System Information](#)

[Move the Odometer Window](#)

[Configure Odometer](#)

## **Reference**

[Revision History](#)

[About Simple Solutions, Inc.](#)

[Contacting Simple Solutions, Inc.](#)

# Overview

## ***What is Odometer for Windows?***

Odometer for Windows is a small, compact, captionless clock which displays the system date, time, resources used, free memory, and a system heat beat (flashing green diode) in a single window.

Like the odometer in your car, Odometer for Windows uses little desktop space, yet contains lot's of useful information.

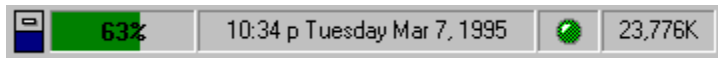
It features a popup, perpetual calendar, resource alarm, and system information display. Odometer can be positioned anywhere on the desktop and can be configured to always remain on top of all other windows.

# Features

- Compact, Movable, Captionless Window
- Popup Perpetual Calendar
- Resource Warning Alarm
- Free Resource Bar Graph

# Odometer's Panels

(To learn more about the Odometer window, click part of the window below)



# A Word About Shareware

Let's face it, shareware Developers love to develop software. We love it so much that we would probably continue to develop whether you register shareware products or not. The only difference is that without your support, we probably wouldn't take the time to document, enhance, distribute, and support the software we create.

## Why Register Shareware?

The Shareware system works because you recognize that by registering the products you use, you encourage the development process. You also receive the benefits listed below:

- Automatic Updates
- Customer Support
- Fully-Functional Software

Please support the shareware concept by registering the software you use.

[How to Register Shareware](#)

# Registering Shareware

## Obtaining a License Code:

Before you can complete the registration process, you will need to obtain a License Code.

There are two ways to obtain a License Code:

### 1 Via Compuserve:

To obtain a License Code via Compuserve, **GO SWREG** and enter the Registration ID associated with the product you wish to register (you can find a list of products, prices, and registration IDs on the Registration Form).

Follow the on-line instructions to complete the registration process. Once we receive notification from Compuserve that you have completed the registration process, your License Code will be Emailed to you.

### 2 Via Mail:

To obtain a License Code via mail, please complete the Registration Form and mail it, along with the registration fee to Simple Solutions. You can print a copy of the Registration Form by clicking **Product Registration** and then **Print Registration Form**.

Once your Registration Form has been received, your License Code will be Faxed, Emailed, or mailed to you as specified on the Registration Form.

## Registering the Software:

After receiving your License Code, you can start the registration process.

Whenever you start an unregistered copy of our software, the Product Registration screen (shown below) will be displayed.

To register the software, click the **Product Registration** button.



After clicking the Product Registration button, you can enter your License Code and your name in the text boxes.

Finally, click the **Register** button to complete the registration process.

Product Registration	
<b>Simple Solutions, Inc.</b> 	
<b>Continue Unregistered</b>	Product Registration...
 Print Registration Form	Enter License Code: <input type="text"/> Enter First and Last Name: <input type="text"/> <b>Register...</b>
Enter License Code	<b>0%</b>

# License Agreement

## Shareware Notice:

**Copyright © 1992, 1995 Simple Solutions, Inc.**

**All rights reserved.**

This software is marketed and distributed as shareware. You may use this product for a period of 21 days after which it must be either registered or removed from your system.

You may freely copy and distribute the UNREGISTERED version of this software provided it is not modified in any way and that all files, including any accompanying documentation are included with the copy.

It is a violation of Federal law to copy the REGISTERED software on any medium except as specifically allowed in the license or nondisclosure agreement.

Simple Solutions, Inc. makes no warranty of any kind with regard to this software or documentation including, but not limited to, the implied warranties of merchantability and fitness for a particular purpose. Simple Solutions, Inc. is not liable for errors contained herein or for any incidental or consequential damages which occur in connection with the use of this product.

## License:

In return for a one-time registration fee, Simple Solutions, Inc. grants the customer a license to use this product subject to the following terms and conditions:

This product may be used on only one computer system at a time.

The software may not be copied or duplicated except for archive purposes. All copies must bear the copyright notices printed on the original disks.

The software may not be installed on a network server for access by multiple computer systems without written permission from Simple Solutions, Inc.

You may not lease, rent, transfer, or loan the software to another user.

## Term:

The license to use this program is effective until terminated. You may terminate the license by destroying all copies of this program. It will also be terminated upon failure to comply with any of the terms or condition of this agreement.

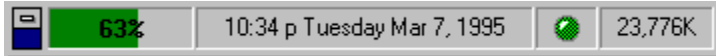
## Governing Law:

This statement shall be construed, interpreted, and governed by the laws of the state of Connecticut.

# Using Odometer

## *The Odometer Window*

(To learn more about the Odometer window, click part of the window below)



## Displaying the Popup Calendar

When you click the system Date and Time panel, a Popup Calendar will be displayed. The calendar displays both the current month's and next month's calendars.

Since the calendar is perpetual, you can scroll forward or backward one month at a time using the right and left arrows.



## Closing the Popup Calendar

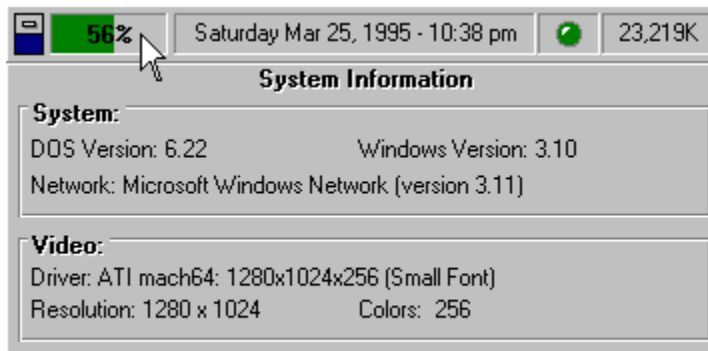
To close the Popup Calendar, click the system Date and Time Panel and Odometer will return to it's previous size.



# Displaying System Information

When you click the System Resources Used panel, a Popup panel will display information about your system. The elements of the System Information window are described below:

- DOS Version (Example: DOS Version: 6.22)
- Windows Version (Example: Windows Version 3.1)
- Network Name and Version (Example: Microsoft Windows Network)
- Current Video Driver/Font Size (Example: ATI mach64)
- Video Resolution (Example: 1280 x 1024)
- Number of Colors (Example: Colors: 256)



## Closing the System Information Window

To close the System Information Window, click the System Resources Used Panel and Odometer will return to it's previous size.

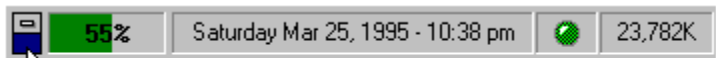
# Moving the Odometer Window

Odometer's window can be positioned anywhere on your desktop by simply dragging the window to its new location.

You can optionally save the position of the window in Odometer's INI file using the Save Window Position feature in the System Configuration screen.

## To move the Odometer Window:

- 1 Position the mouse pointer over Odometer's Title Square (located just below Odometer's system menu).
- 2 Press and hold the left mouse button.
- 3 Drag the window to its new location.
- 4 Release the Mouse button.

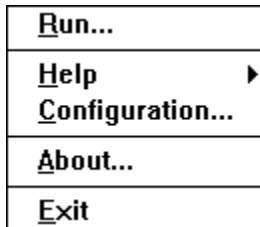


**With the left mouse button depressed, drag the window**

# Configuring Odometer



To configure Odometer, click the system menu.

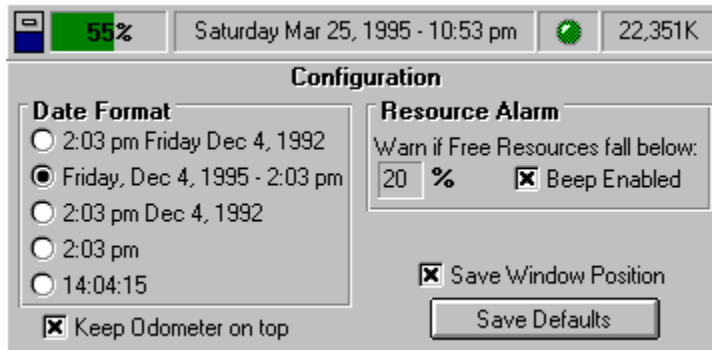


From the popup menu, click **Configuration...**

From the Configuration screen, you can select several options:

Please note that in order to save your settings, you must click the Save Defaults button after selecting new configuration options.

- **Date Format:**  
Select one of the preconfigured date formats. Odometer's display will instantly change to the new format. Please note that in order to save this setting, you must click the **Save Defaults** button.
- **Keep Odometer on top:**  
To force Odometer to always remain on top of all other Windows, enable this option.
- **Resource Alarm:**  
Odometer can be configured to warn you when system resource fall below a specified percentage. The default is 20%, however you can enter any percentage you wish. When resources fall below the amount specified, the green resource bar will turn red and Odometer will beep if the **Beep Enabled** option is selected.
- **Save Window Position:**  
To save the location of the Odometer window, position Odometer and enable the **Save Window Position** option. Then click **Save Defaults**.
- **Save Defaults:**  
To save any system configuration options as system defaults, click the **Save Defaults** button.



# Revision History

## Legend

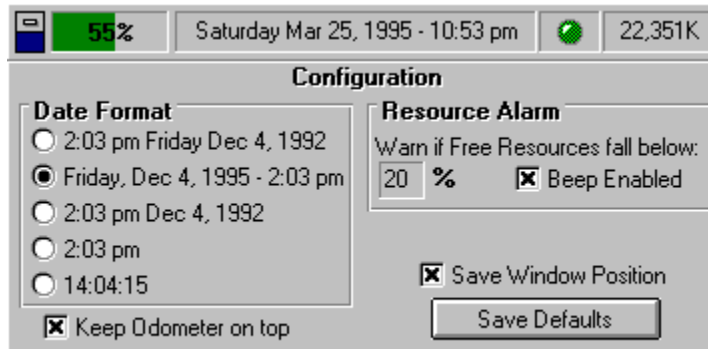


New Features



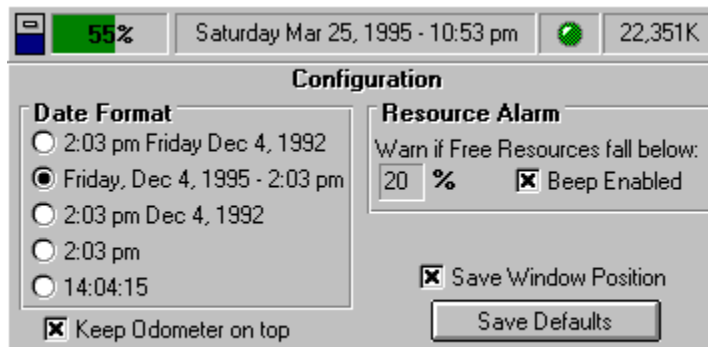
Bug Fixes

## Version 1.0

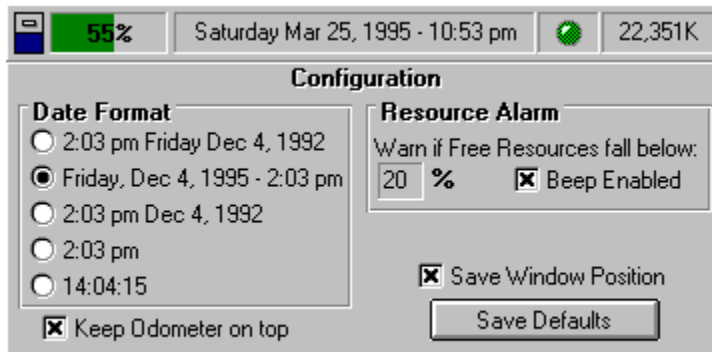


Initial Release

## Version 2.0



Added popup calendar

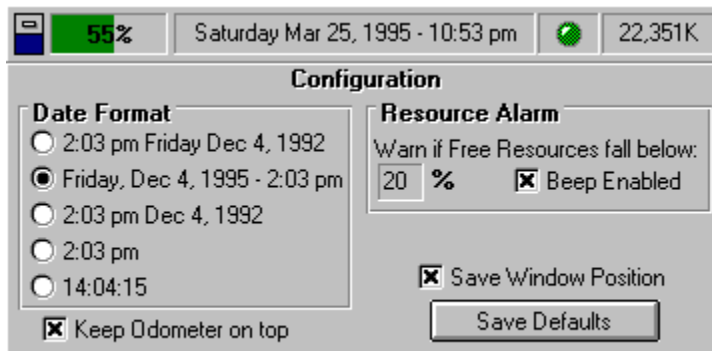


Flashing diode for system status

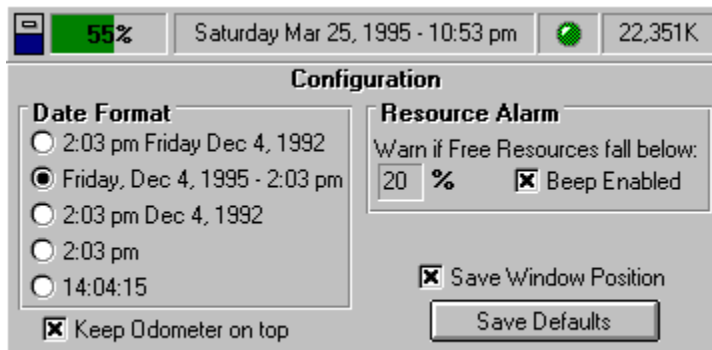


Fixed popup display problem

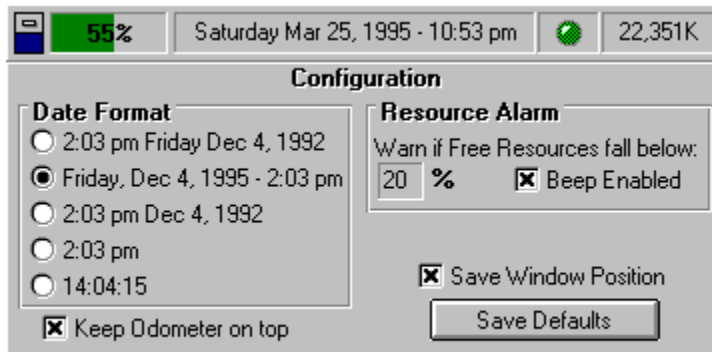
### Version 3.0



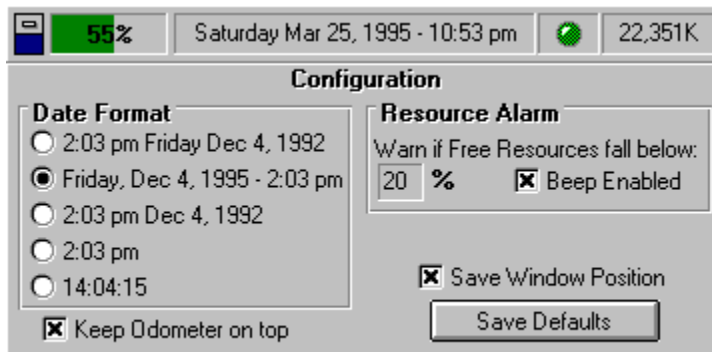
Ability to reposition Odometer by dragging window



Added System Configuration screen



Scroll capability on calendar



Added Windows Help

# Simple Solutions, Inc.

## **About Simple Solutions, Inc.**

### ***Overview:***

Simple Solutions, Inc. is a small, privately-held Corporation dedicated to producing quality software for the business community. Our products focus on Windows-based utilities, however we do build custom applications on a contract basis.

### ***Our Mission:***

To produce quality software products that provide simple solutions to everyday problems. We believe that software should not be more complicated than the problem it attempts to solve. Our mission is to create intuitive software with a little common sense; simple products that enhance productivity.

### ***Our Slogan:***

Just a little common sense in a complicated world™

### ***History:***

Simple Solutions was formed in June of 1987 by Nicholas R. Bencivengo, Jr. In September of 1991, Simple Solutions was Incorporated in the state of Connecticut.

### ***Principal Products:***

- SQLBuilder for Windows
- Network Laser Selector for Windows
- Font Viewer for Windows

# Simple Solutions, Inc.

## Contacting Simple Solutions, Inc.



Fax: 203-664-3746



Email: [71344.2415@compuserve.com](mailto:71344.2415@compuserve.com)



### ***Free System Memory***

This panel displays the amount of available, free system memory including any virtual memory.

### ***System Date and Time***

This panel displays the system date and time. You can change the format of the date and time by clicking the Configuration menu option located on the system menu.

If you click on the System Date and Time panel, the Popup Calendar will be displayed.

## ***System Menu***

Clicking this box causes the system menu to be displayed.

### ***System Resources Used***

This panel displays the percentage of system resources used as well as a green bar which will change to red whenever free resources fall below the percentage you configure.

If you click on the System Resource panel, a [System Information popup panel](#) will display additional information about your system.

***System Status***

This green diode flashes to let you know that your system is active.

### ***Title Bar***

To reposition Odometer on the desktop, click the Title Bar (block) and drag the window to its new location. You can save the new location by enabling the Save Window Position checkbox and clicking the Save Defaults button on the configuration screen.

# Topic1







