



Welcome

[Welcome to AX-SHELL](#)

[About AX-SHELL](#)

[SHAREWARE Registering](#)

[Other products by AXIALIS](#)



Procedures

[Create a new program](#)

[Program properties](#)

[Create a new program group](#)

[Group properties](#)

[Delete a program](#)

[Delete a group](#)

[Install a new program](#)

[Associate filename extensions](#)

[Run a program or a document](#)

[Print a document](#)

[Set-Up printers](#)

[Move a program](#)

[Move a group](#)

[Copy a program](#)

[Customize the way AX-SHELL works](#)

[Open a program, a document or a group](#)

[Find associated files](#)



Commands

[File menu commands](#)

[Edit menu commands](#)

[Display menu commands](#)

[Options menu commands](#)

[Tools menu commands](#)

[Messages menu commands](#)

[Help menu commands](#)



Miscellaneous

[Tools bar](#)

[Tips](#)

[Tools window](#)

[Files directory window](#)

[The two kind of groups](#)

[Four Tools](#)

[Speed List](#)

Change icon

Associate a password with a document

Printing text files

The main password AX-SHELL access and suspend mode

Drag and drop from files directory window to menu

Import a group from Program Manager

Welcome to AX-SHELL

AX-SHELL is a powerful tool for users and professional of micro-computers.

AX-SHELL is a desktop manager for Windows which allows to manage the programs and the documents. You will display files directory window, tolls bar, make drag and drop in all the directions and manage some groups and sub-groups in order to organize your different works.

We hope that this utility will please you .

For all complementary informations, please write or contact AXIALIS :

AXIALIS SA
1, rue de Stockholm
75008 PARIS
FRANCE
Phone : (33 1). 44 .70 .72 .00
Fax : (33 1) .44. 70. 00 .19



Related topics

[File menu commands](#)

[Edit menu commands](#)

[Display menu commands](#)

[Options menu commands](#)

[Tools menu commands](#)

[Messages menu commands](#)

[Help menu commands](#)

Open a program, a document or a group

This command allows to start the selected program, the associated document or to display the group content.



Procedure

1. Select a program, a document or a group
2. Choose **<File><Open>**

AX-SHELL opens the program, the associated document or displays the group content.



Related topics

[File menu commands](#)

AX-SHELL Version 1.1

Desktop Manager for Windows

(c) 1993-94 Axialis SA -All rights reserved.

Authors : Martine BOCCANFUSO
 Marc EMILE
 William EMILE

AXIALIS SA
1, rue de
Stockholm
75008 PARIS

Tel (33) (1) 44 70
72 00
Fax (33) (1) 44 70
00 19

AXIALIS, productivity tools for your PC.

Create a new program

A program is a DOS or Windows application (Word processing, spreadsheet, utilities...).



Procedure

1. Select the group, the sub-group in which you wish to add a program.
2. Choose <File><New program item>.

The dialog box "[Help menu commands](#)" opens.

Fill the different edit zones and choose <OK>.

The new program is inserted in the selected group or sub-group.

[Help menu commands](#)

Related topics

[Help menu commands](#)

[Help menu commands](#)

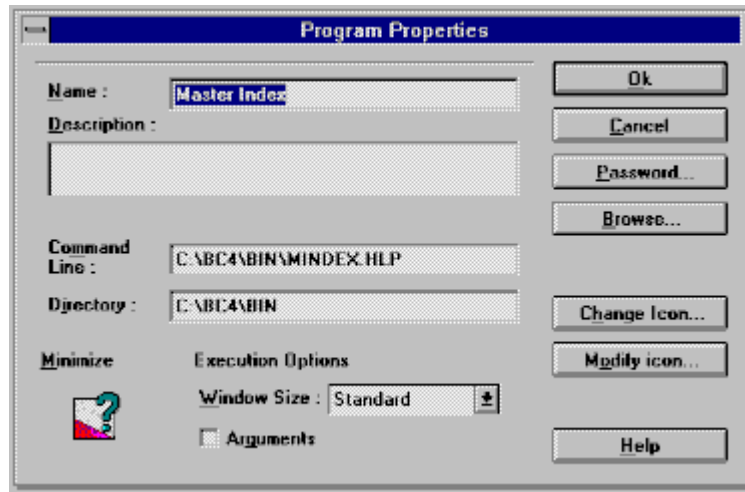
Program properties

You can change program properties : its description, command line, icon, run options and password.

[Help menu commands](#)

Procedure

1. Select the program
2. Click on the right mouse button or select **<File><Program properties>**.
The dialog box "**Program Properties** " opens.



Click on the picture to have help.

[Help menu commands](#)

[Help menu commands](#)

Related topics

This button allows to modify an icon. AX-SHELL uses OLE (Object Linking and Embedding) with AX-ICON in order to create your own icons. This button is grayed if AX-ICON has not been previously installed.

For example :

If you want to modify an icon in AX-SHELL., you must click on the button "**Modify an icon**". AX-ICON runs, then you can modify the icon.

To exit AX-ICON and update your modified icon :

- Choose **<File><Quit and return in ...>**

The icon is updated in AX-SHELL.

Remark : This option is valid only if you have AX-ICON version 1.1.

Displays the program name under the icon.

Displays the program description at the bottom of the main windows if you turn the status bar on in Options menu commands "<Options><Status bar>".

Enter the path and the filename.

Enter the path of the starting directory.

Program icon edit zone.

In the list "Window" Choose :

- **Standard** : Runs program in a standard window.
- **Minimize** : Runs program and reduces it as icon.
- **Maximize** : Runs program in full screen.

You can activate the option "Arguments" See **Run arguments**

Run arguments

This option allows you to enter arguments before running a program.

Tools menu commands

Procedure

1. Select the program.
2. Click on the right mouse button. The dialog box **"Program properties"** opens.
3. Mark the check box **"Arguments"**. Choose **<OK>**.
AX-SHELL will open the dialog box **"Arguments"**.
4. Fill the edit zone and choose **<OK>**.

Example

If the selected program is NOTEPAD.EXE, you can enter the document filename FICHE.TXT.
AX-SHELL will run NOTEPAD.EXE and load FICHE.TXT.

Associate a password with a program or a document

You can specify a password to protect the access to a document or a program.

Tools menu commands

Procedure

Create or modify a password

1. Click on the button **"Password"** in the dialog box **"Program properties"**
The dialog box **"Change password"** opens.
2. If the program has already a password, AX-SHELL asks you to enter in the edit zone (1).
3. If the program has not a password or if you want to modify it, enter the new password in the edit zone (2).
4. Enter the password to confirm in the edit zone (3).
The password is associated with a document or a program.

Delete password

1. Click on the button **"Password"** the dialog box **"Program properties"**
The dialog box **"change password"** opens.
2. In the edit zone (1), enter the old password
3. In the edit zone (2), enter ENTER.
4. In the edit zone (3), enter ENTER.
The password associated with a program or a document is deleted.

Enter password before running a program or a document

1. Click on the program or document.
AX-SHELL opens the dialog box **"Change password"**.
2. Enter in the edit zone, the password associated with a program or a document.

The main password

The main password protects the AX-SHELL access.

Remark : In the command **<Options><Preferences>**, you can active or not the option **"Ask password during loading of AX-SHELL"**

Tools menu commands

Procedure

1. Choose **<File><Password>**
2. The dialog box "Change password" opens.
3. If the password already exists, enter the old password in the edit zone (1).
4. Enter the new password in the edit zone (2).
5. Enter the same password to confirm in the edit zone (3).

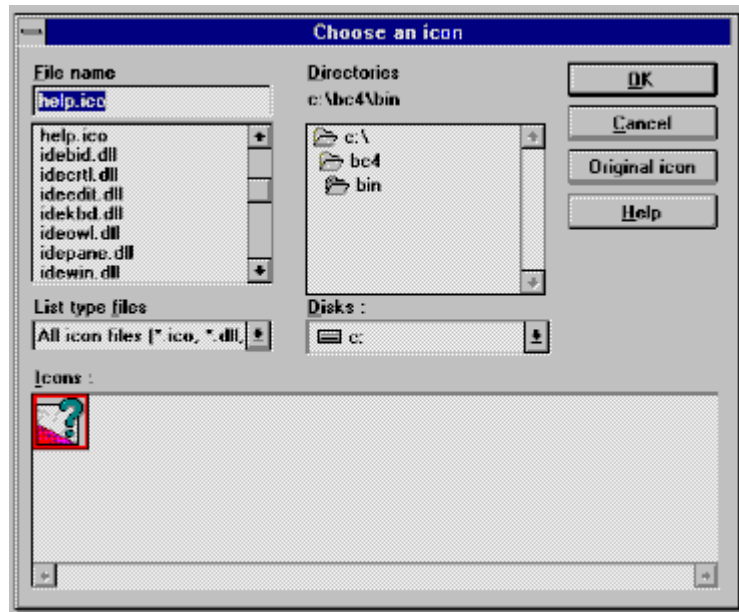
Change the icon associated with program, document or group.

You can change the icon associated with a program, a document or a group.

Tools menu commands

Procedure

1. Click on **"Change icon"** in the dialog box **"Program properties"** or **"Group properties"**. The dialog box **"Choose an icon"** opens.



Click on the picture to have help.



Related topics



Allows to scroll through a list of all the filenames and directories.

Displays the icon filename. Enter the filename to run or select in the list.

Displays the list of current directory filenames.

Displays the current directory.

Displays the sub-directories in the current directory.

AX-SHELL keeps the path of the original icon associated with a program or a group.

Displays files formats :

- All icons files
- Icons files (*.ICO)
- DLL Files (*.DLL)
- Filenames (*.EXE)

Displays available drives.

Displays the icons associated with a file .ICO, *.DLL or *.EXE opened..


Group Properties


You can change group or sub-group properties : its long title, short title or icon.



Procedure

1. Select the group or sub-group.
2. Click on the right mouse button or **<File><Group properties>**.
The dialog box "**Group properties**" opens.
3. Enter a new long and short title associated with a group.

4. Click on **<Change icon>** to choose another icon (see ).

5. Click on **<Modify icon>** to modify the existing icon (see ).



Related topics



The two kind of groups

AX-SHELL contents two kind of groups

- The main groups**
- The sub-groups**

The main groups are drawn as folders.

The sub-groups are drawn as icons

The main group contents programs ou documents icons or a sub-groups.

Remark : if you display a sub-group, it is drawn as folder and becomes a main group.



Related topics



Create a new group

AX-SHELL contents two kind of groups

- The main groups**
- The sub-groups**

The main groups are drawn as folders.


The sub-groups are drawn as icons

The main group contents programs ou documents icons or a sub-groups.



Procedure

1. Choose **<File> <New group>**
The dialog box **"Create a new group"** opens.
2. Choose **<Program group>** or **<Sub-group>**.
The dialog box **"Group properties"** opens.
3. Enter the short title
Enter the long title.

4. Click on **<change icon>** if you want to modify the group or sub-group icon (see ).

Remark : AX-SHELL displays in the dialog box **"Group properties"**, the group filename created.



Related topics



Install a new program

This operation allows to run a standard install program from drive A: or B:



Procedure

1. Insert the install disk in the drive A: or B:
2. Choose **<File><Install a new program>**.
AX-SHELL will search the install procedure "A:INSTALL", "B:INSTALL", "A:SETUP" or "B:SETUP" and will run it.

Remark : If AX-SHELL does not find the install procedure A:INSTALL, B:INSTALL, "A:SETUP" or "B:SETUP", it displays a message **"No install program [INSTALL.EXE] or [SETUP.EXE] has not been found on the existing drives"**.

Associate filename extensions with an application

This operation allows to associate filename extension with an application.

Example

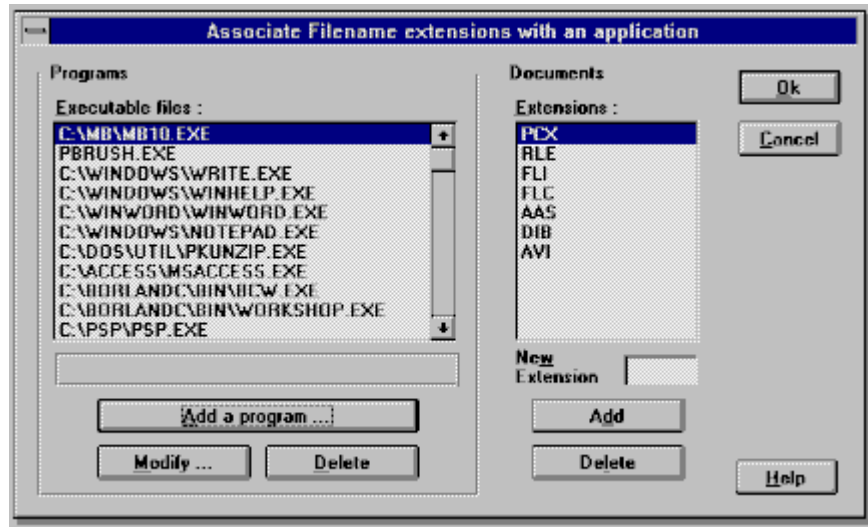
If you associate filename extension .DOC with an application WORD for Windows. When you open a file .DOC, WORD runs et loads the file .DOC.



Procedure

1. Choose <File><Associate>

The dialog box "Associate filename Extensions with an application"



Click on the picture to have help.

Program list. Each program can be associated with several filename extensions.

Registration database informations.

Add a program in the program list.

Change a program.

Remove a program from the list.

Display the filename extensions list associated with an application.

Edit zone in which you enter a filename extension.

Add a filename extension in a list.

Delete a filename extension

Run a program or a document

This command allows to run a program or open a document.



Procedure

1. Choose **<File><Run>**
The dialog box **"Run"** opens.
2. The edit zone (1) displays the current directory.
3. You must enter the DOS command and the path to run your program or the associated document.
4. Choose in the list **"Windows"** one option : "Minimize", "Maximize" or "Standard" to run your program or associated document.



Standard : Runs program in a standard window.



Minimize : Runs program and reduces it as icon.



Maximize : Runs program in full screen.

Print a document

You can print documents in AX-SHELL. If the program or the associated document is not in the registration database informations , AX-SHELL asks you to print the document as text.

Remark : The Windows registration database informations contents the current programs : Word, Excel, Ami Pro, Write...



Procedure

1. Select a document.
2. Click sur **<File><Print>**.
AX-SHELL displays a message if the associated program is nos registered in the

registration database informations. See



Set up printers

Installs and removes printers and sets printing options (Control Panel).



Procedure

1. Choose **<File><Set up printers>**

The dialog box "Printer" opens.

See Windows 3.1 Help.

Remark : You can display this dialog box if you click on the printer icon in the tools windows using the right mouse button.

Move a program

Moving a program means cutting the selected program to the clipboard and paste content from the clipboard.



Procedure

1. Select a program
2. Choose **<Edit><Cut>**
3. Display the group or sub-group.
4. Choose **<Edit><Paste>**



Related topics



Move a group

You can move a group or sub-group from another group.

Warning : Moving a group means moving also its contents (programs, documents and sub-groups).



Procedure

1. Select a group or a sub-group.
2. Choose **<Edit><Cut>**
3. Display the group or sub-group.
4. Choose **<Edit><Paste>**



Related topics



Copy a program

Copy the selected program item to the clipboard and paste content from the clipboard.



Procedure

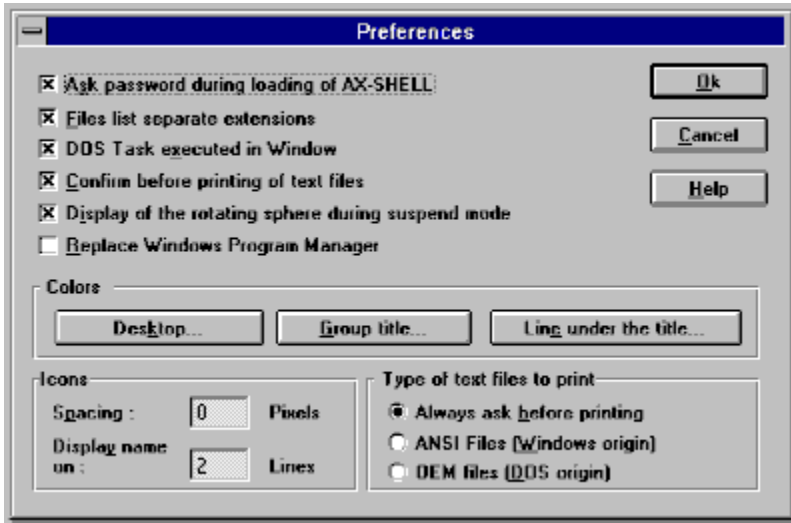
1. Select the program
2. Choose **<Edit><Copy>**
3. Display the group or sub-group.
4. Choose **<Edit><Paste>**



Related topics



Customize the way AX-SHELL works



Click on the picture to have help.

Opens the box "Colors" windows standard. Personalize the desktop color.

Opens the box "Colors" windows standard. Personalize the main group title color.

Opens the box "Colors" windows standard. Personalize the line under of the main group title.

Activate or not the main password.



Related topics



Displays in files directory window, files and extensions without a separator character.



Related topics



Run a session DOS in maximize or standard windows.

Displays a message "**Print a file as text**" if a program does not exist in the registration database informations..

Displays of the rotating sphere during suspend mode. if this option is nos active, AX-SHELL will display a station in suspend mode.



Related topics



Replace Windows Program Manager.

Space the AX-SHELL icons to 0 to 99 pixels.

Displays the text associated with an icon on 1 to 4 lines.

Choose printing options

Always ask before printing : Displays the dialog box **"Print a text file"** . Choose "ANSI Files" or "OEM files".

ANSI Files (origin Windows) : AX-SHELL print an ANSI text file.

OEM Files (origin DOS) : AX-SHELL print a OEM text file.



Related topics



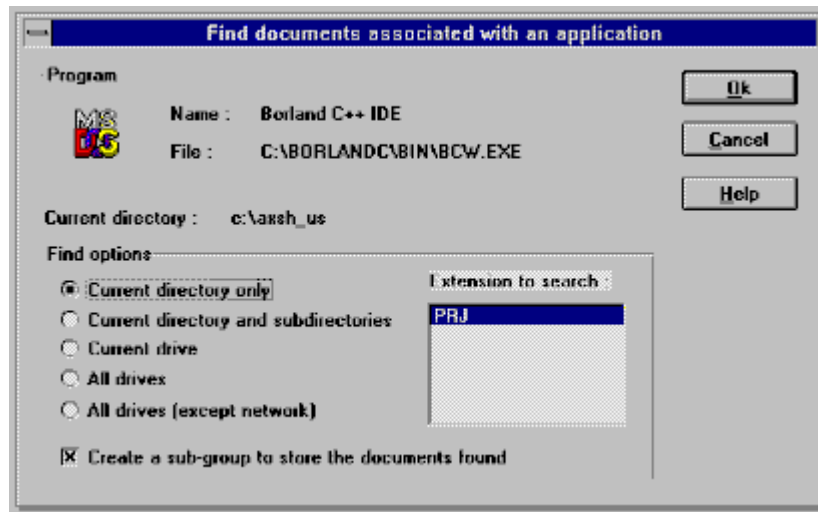
Find filename extensions associated with a program

AX-SHELL allows to find filename extensions associated with a program and to display all associated documents in a sub-group.




Procedure

1. Select the program.
2. Choose **<Tools><Find documents associated with an application>**
The dialog box "Find documents associated with an application" opens.



Click on the picture to have help.

Displays the name program and directory.

Displays the current directory. See .

Finds all documents associated with a selected extension in the current directory..

Finds all documents associated with a selected extension in the current directory and sub-directories..

Finds all documents associated with a selected extension in the active disk of files directory window.

Finds all documents associated with a selected extension in all available drives(too network)

Finds all documents associated with a selected extension in all available drives(except network)

Creates a sub group in current group with all documents associated with the selected program.

Displays all documents associated with the selected program.

Remarque : If no document associated with a program, AX-SHELL displays a message "**no document associated with a program**". Choose **<File><Associate>** to create an association.

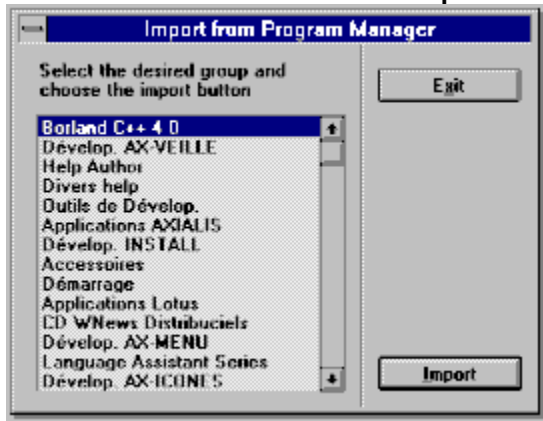
Import a group from Program Manager

You can manually install groups of Program Manager. This operation allows to install manually Program Manager groups choosing in a list. This option is essential because a few install programs no standard oblige the creating groups and icons in "PROGMAN.EXE".



Procedure

1. Choose <Tools><Import from Program Manager>



Click on the picture to have help.

Displays the Program Manager groups list.

Choose group and click on this button to import from Program Manager to AX-SHELL

Tips

MOVING A PROGRAM, A DOCUMENT OR A SUB-GROUP IN ANOTHER GROUP

AX-SHELL uses Drag and Drop to move a program, a document or a group in the same or another group or sub-group.



Procedure

First method

1. Choose <Options><Tools window>
2. Select a program, a document or a group.
3. Move on clipboard icon using drag and drop (the mouse cursor changes to a document).



See

The clipboard icon has changed : It contains the selected object.

4. Display another group or sub-group.
5. Drag and drop from clipboard icon to the new location.

Second method

1. Select a group, a document or a sub-group to move.
2. Drag and drop from main group folder; sub-group icon or current group.

COPYING A PROGRAM, A DOCUMENT IN A GROUP

AX-SHELL uses drag and drop to copy a program, a document in a same or another group.



Procedure

First method

1. Choose <Options><Tools window>
2. Select a program while pressing the CTRL key.
3. Move on clipboard icon using drag and drop (the mouse cursor changes to a double



document). See

The clipboard icon has changed : It contains the selected object.

4. Display another group or sub-group.
5. Drag and drop from clipboard icon to the new location.

Second method

1. Select a program or a document
2. Drag and drop from main group folder; sub-group icon or current group while pressing the CTRL key.

TRANSFORMING A SUB-GROUP TO A MAIN GROUP

AX-SHELL can transform an icon sub-group to a main group.



Procedure

1. Select a sub-group.
2. Move it on folders bar using drag and drop to a blank space (the mouse cursor changes to a group)

Warning : You must transform a sub-group to a main group on the blank space of _____


forders bar. If you move it on an existed folder, the selected sub-group will be move in a main group.

TRANSFORMING A MAIN GROUP TO A SUB-GROUP

AX-SHELL can transform a main group to a sub-group.



Procedure



1. Choose **<Options><Tools window>**
2. Select the main group in folders bar.
3. Move on clipboard icon using drag and drop. See .
The clipboard icon has changed : It contains the selected object.
4. Display another group or sub-group.
5. Drag and drop from clipboard icon to the new location.

LOCKING A PROGRAM, A DOCUMENT

AX-SHELL allows to lock a program or a document.



Procedure

1. Choose **<Options><Tools window>**
2. Select a program or a document.
3. Move on padlock icon using drag and drop. See .
The padlock icon has changed : It contains the selected object.
4. The dialog box **"Change password"** opens. See .
Enter the password and choose **<OK>**.

MODIFYING A GROUP, A SUB-GROUP, A PROGRAM OR A DOCUMENT

To modify quickly group or program properties, you must click on the right mouse button.


Remark: This rule is valid for all AXIALIS program.

COPYING A PROGRAM, A DOCUMENT IN THE SPEED LIST

AX-SHELL displays a speed list in which you can move applications most frequently running using drag and drop.



Procedure

- 1 Select a program
- 2 Move on the speed list using drag and drop (see ).



Related topics





Four Tools

AX-Shell includes four essential tools.



Click on the picture to have Help.

You would select an object from the main windows or file windows and Drag and Drop on one of four tools.

The speed list

This zone allows to place programs, documents most frequently running.



Tools window

Tools window allows to access easier most common functions.



Procedure

1. Choose **<Options><Tools window>**. The Tools window opens on the right side of the screen.



Click on the picture to have Help.



Related topics



This zone displays memory KB free and this gauge displays system resources free

Launch applications using command line.

Launch the Windows Notepad

Launch windows Write.


Lauch Windows Paintbrush.

Launch the Windows File manager.

Display the date.

Display the time.

Locking Tool

Lock using drag and drop from the main windows (see  et



Printing Tool

Print using drag and drop from a document. See



Clipboard Tool .

Store a program, an associated program or a group to copy or move it.

Remark : You can display the clipboard contain by a right mouse button click.

Tool Trash

Delete a program, a group or a document.

Remark : You can display the clipboard content using a right mouse button click.

Files directory window

Files directory window organizes your files and directories. You can copy, delete, rename them and create directories.



Procedure

1. Choose <Options><Files directory window>.



Click on the picture to have help



Related Topics



Displays the available drives list.

Displays free space left on the current drive.

Displays the current directory.

Displays files and current directories of current path.

Tools bar associated with files directory window.
Four buttons are drawn :



Copy a file



Delete a file or directory



Rename a file or directory



Create a directory.

Remark : AX-Shell allows to erase a file from the file directory windows by Drag and Drop on tool trash and print a file on printing tool

(see )

File menu Commands

File	
New program item ...	Insert
Open	Enter
Delete program item ...	Suppr
Program item properties ...	Ctrl+Enter
New group ...	Alt+Inser
Delete group ...	Alt+Suppr
Group properties ...	Alt+Enter
Intall a new application	
Associate ...	
Run ...	F9
MS DOS prompt ...	F11
Print	Ctrl+P
Set Up printers ...	
Non modify mode ...	
Password ...	
Turn on suspend mode	F12
Rearrange desktop	F5
Exit AX-SHELL ...	

Click on the picture to have help



Related topics



AX-SHELL is non modify mode. You can't modify, delete, copy or move group, program or document. The menus and tools bar don't exit. To activate this mode, AX-SHELL needs a specific password.





Procedure

1. Choose <File><Non modify mode>
The dialog box "Activate non modify mode" opens.
2. Enter the password, choose <OK>.
3. Confirm the password and choose<OK>.

Remark : The password using to set AX-SHELL in non modify mode can be different of main password.



(see ). AX-SHELL needs a password to not active this mode.

This password protects AX-SHELL access or suspend mode. See  and



You can display of the rotating sphere during suspend mode or a message "Suspend mode". ..

Displays AX-SHELL on the upper side of the screen and the opened applications are minimized on the lower side of the screen.

Start a MS-DOS command prompt session. To come back to Windows, type **EXIT**.

Delete a program

You can delete a program or an associated document.

Remark : This command does not delete a program or an associated document on a drive but AX-SHELL removes the associated icon.



Procedure

1. Select a program or an associated document.
2. Choose **<File><Delete program>**
The dialog box "**Warning...**" opens.
3. Choose **<OK>** to confirm.



Related topics



Delete a group or a sub-group

You can delete a group or a sub-group if you do not use it.

Warning : When you delete a group, you also delete its content but AX-SHELL do not remove programs on drive. Only, the associated icon do non exit in AX-SHELL.



Procedure

1. Select a group or a sub-group.
2. Choose **<File><Delete group>**
The dialog box "**Warning..**" opens.
3. Choose **<OK>** to confirm.



Related topics



Exit AX-SHELL or Windows session if you markcheck box **"Replace Program Manager"** in the dialog



box **"Preferences"** (See



Procedure

1. Choose **<File><Exit AX-SHELL>** or **<File><Exit session Windows>** .

Edit menu commands

Edit	
Cut	Ctrl+X
Copy	Ctrl+C
Paste	Ctrl+V
Undo Trash	Ctrl+Z

Click on the picture to have help



Related topics



Cut the selected program item to the clipboard.



Related topics



Copy the selected program item to the clipboard.



Related topics

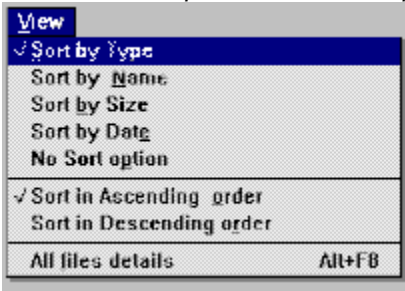


Paste content from the clipboard.

Get an item back.

Display menu commands

Click on the picture to have help.



Related topics



Sort the active directory windows in alphabetical order extension.

Sort by name the active directory window.

Sort by syze the active directory window.

Sort by date the active directory window.

Sort by type the active directory window in ascending order.

Sort the active directory window in ascending order (name, extension, size or date).



dates : Sort from older to newer file.



sizes : Sort from smaller to bigger file



extensions : Sort from A to Z file



names : Sort from A to Z file

Sort the active directory window in descending order (name, extension, size or date).



dates : Sort from older to newer file.



sizes : Sort from smaller to bigger file



extensions : Sort from A to Z file



names : Sort from A to Z file

Displays all available informations on files, directories and sub-directories (name, date, time, attributes..).

Options menu commands

Options	
✓ Status <u>b</u> ar	
✓ Tools bar	
✓ <u>G</u> roup title	
Full page	Alt+F1
✓ Tools <u>W</u> indow	Alt+F2
Directory <u>W</u> indow	Alt+F3
Preferences ...	F2

Click on the picture to have Help.



Related topics



Displays a message at the bottom of the screen describing a selected command when you turn the status bar on.

Show/Hide the tools bar (voir



)

Show/Hide long group title name.

Displays AX-SHELL on full page..

Tools menu commands


Tools	
Find associated files ...	
Import a group from the Program Manager ...	
Change the Windows screen colors ...	
Change the Windows Fonts ...	
Change the look of Desktop ...	
Change date and time ...	
Windows setup ...	
System files editor ...	
Task list ...	F3
Control Panel ...	
Clipboard ...	
Copy...	F8
Delete ...	Suppr
Rename ...	F6
Create directory ...	F7

Click on the picture to have help.



Related topics



Finds associated files. See .

Launches "Colors" dialog box of Windows Control Panel.

Launches "Fonts" dialog box of Windows Control Panel.

Launches "Desktop" dialog box of Windows Control Panel.

Launches "Date/Time" dialog box of Windows Control Panel.

Launches "Windows setup" dialog box.

Launchs edit file

The four files are opened :



SYSTEM.INI



WIN.INI



AUTOEXEC.BAT



CONFIG.SYS

Displays all Windows applications currently running

Launchs Windows Control Panel.

Opens Windows Clipboard Viewer.

Copy the selected file in the directory window.

Warning : this option is available only in files directory window.



Related topics



[Rename a file](#)

[Create a directory](#)

[Copy a file](#)

Delete the selected file in the directory window

Warning : This option is available only in files directory window. The sub-directories must be empty before deletion.



Related topics



Rename a file or directory

Warning : This option is available only in files directory window.



Related topics



Delete a file/directory



Create a directory in the directory window

Warning : This option is available only in files directory window.



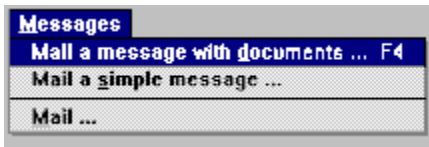
Related topics



Delete a file/directory



Messages menu commands



Click on the picture to have help

Remark : These commands are available only if you have Windows for Workgroups.



Related topics

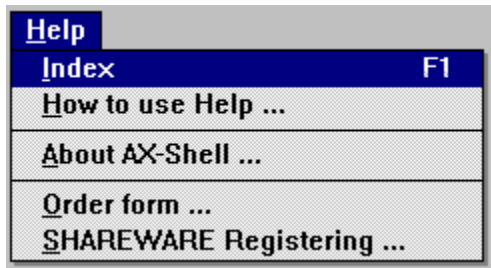


Send a message to a network user. This message will contain selected AX-SHELL files or selected files in files directory window. You can also enter texte (See Mail of Windows Workgroups).

Send a simple message. It will contain only text.. See Mail of Windows Workgroups).

Mail of Windows Workgroups.

Help menu commands



Click on the picture to have help.



Related topics



Displays Copyright, the authors, the free memory and resources.

Displays the order from

Enter the registering number to have a complete version.

Commande Index

Displays help Index



Related topics



How to use Help

Launches standard Windows help. Pushes F1 to display this topic.



Related topics

[Index menu commands](#)























Tools bar

Tools bar allows to access quickly AX-SHELL commands most frequently running . A simple click creates, replaces a newgroup, deletes a group modify a program or group....

Buttons tools bar :

Click on

Infos

	Exit	Exit AX-SHELL and eventually Windows
	Password	Change main password (AX-SHELL acces and suspend mode)
	Turn on suspend mode	Turn on suspend mode and activate of screen saver
	Rearrange desktop	Rearrange desktop
	New program item	Create a new program item in the current group
	Delet program item	Delete the selected program item
	Program properties	Modify/Display the selected program item properties.
	New group	Create a new group
	Delete group	Delet the selected group
	Group properties	Modify/display the selected group properties
	Cut	Cut the selected program item to the clipboard
	Copy	Copy the selected program item to the clipboard
	Paste	Paste content from the clipboard
	Print	Print the selected document
	Full page	Display all groups in full page
	Tools	Display tools window on the right side of a screen
	Files	Display files directory window on the right side of a screen
	Help	Display Help index
	Messages and documents	Send a message and selected documents to a network user.
	Simple message	Send a message to a network user.
	Mail	Start mail (Microsoft Mail).
	AX-Icon	Lauch AX-Icon

Related topics





Drag and drop from files directory window to menu

AX-SHELL will install quickly one or several programs or documents by using "Drag and Drop" from files directory window to menu.



Procedure

1. Choose **<Options><Files directory window>**.
Files directory window is on the right side of the screen.
2. Select programs/documents.
3. Drag and drop them from directory windows to menu.
AX-SHELL installs all programs and documents in the group or sub-group.

Printing text files

AX-SHELL allows to print two kind of text files.

ANSI text files

These are text files created using Windows editor (for example, NOTEPAD).

OEM text files

These are text files created using DOS editor (for example EDIT).

SHAREWARE Registering

AX-SHELL is SHAREWARE. THIS IS NOT A FREE SOFTWARE.

You can copy, try and distribute on disks, BBS or CD-ROM the unregistered version. If you use it, you must register.

If you register AX-SHELL, we send you a registering number. You can choose Registering in the **Help Menu** and enter this code.



SPECIAL OFFER : AX-SHELL 1.1 and AX-ICON 1.1

BUNDLE : AX-ICON and AX-SHELL

1 to 9 stations	\$69	by station
10 to 49 stations	\$48	by station
50 to 99 stations	\$45	by station
100 to 199 stations	\$41	by station
200 and more	\$38	by station



Prices for AX-Shell 1.1

1 to 9 stations	\$39	by station
10 to 49 stations	\$27	by station
50 to 99 stations	\$25	by station
100 to 199 stations	\$23	by station
200 and more	\$20	by station



To order by CHECK only

Print "COMMANDE.WRI" or select the menu command <Help> <Order form>.
Send a check to :

AXIALIS SA
1, rue de Stockholm
75008 Paris
France
Phone : (33 1) 40.50.32.02 or (33 1) 44.70.71.89



To order by Credit Card

Send your order form to :

PsL
P.O. Box 35705
Houston, TX 77235-5705
Fax : 713-524-6398
Phone : 800-242-4775 or 713-524-6394
The PsL number for AX-SHELL is : #11571



To order using CompuServe

Please use the CompuServe shareware registration service (**GO SWREG**). The number for AX-ICON is : **2891**

You can contact us at CompuServe : **100072,36**

Other products by AXIALIS



AX-SHELL 1.1 FOR WINDOWS **\$39**

AX-SHELL is a powerful tool for users and professional of micro-computers. AX-SHELL is a desktop manager for Windows which allows to manage your programs and documents. You will display files directory window, tool bar, make drag and drop in all the directions and create groups and sub-groups in order to organize your work.



AX-ICON 1.1 FOR WINDOWS **\$39**

AX-ICON is an icon library manager and editor for Windows 3.1. With its drawing tools, you can create simple or sophisticated icons. The AX-ICON editor allows also to create dithered fills, try a drawn icon, capture an icon ...

Using the library manager you will create, delete, copy or move icons, make drag and drop directly to the Program Manager or to AX-SHELL to change a program icon.

AX-ICON 1.0 is also an OLE server (Object Linking and Embedding). You can incorporate objects (here icons) in documents of other applications (Write, Word for Windows, Excel ...).



AX-MENU 1.3 FOR DOS **\$64**

AX-MENU is a graphical and text application launcher for DOS. It allows to realize a menu composed of graphical icons. After the installation, AX-MENU find all applications on your hard disk et display them in 16 colors icons form. AX-MENU recognizes and installs more than 300 applications. It is completely graphical with a superb 3D Windows look like.



AX-MENU 1.3 FOR WINDOWS **\$64**

AX-MENU is a program manager for Windows which allows to realize a menu composed of graphical icons. This program can replace the Program Manager of Windows. AX-MENU recognizes ans installs more than 300 applications. You can install a program by knowing only its commercial name. AX-MENU will make the research on your hard disk. It displays groups and programs in icons form.



AX-MENU PRO 1.3 NETWORK **\$290**

AX-MENU PRO is a network application launcher for DOS and Windows. It allows to manage a parc of several menus used by DOS or Windows users with a unique tool. Each user can have its own menu in DOS or Windows. The administrator will create the users database on the server. He can class the users by working group, create and update shared menus.

(Price for 10 users, contact us for site licence).



AX-BATCH 3.0 FOR DOS **\$56**

AX-BATCH 3.0 is a graphical user interface for batch files running with EGA, VGA, and SuperVGA video cards. You can enter strings, display messages or list boxes. You have 44 functions to realize an application running in a graphical environment.

(Price for one station, for a company licence **\$500**)



AX-START 1.0 FOR DOS \$500

AX-START is a tool which installs several archived programs to hard disk. It allows to install quickly from one or a set of floppy disks archived programs on a hard disk and run them automatically. You can realize installation packs up to 21 programs.



AX-GUI 2.0 FOR DOS \$500

AX-GUI is a library for Borland C++ 3.1 which permits you to create graphical programs for DOS using the language C.



AX-INSTALL 1.0 FOR DOS \$98

AX-INSTALL is a tool which installs one application for DOS. Its allows to install from one or a set of floppy disks, an application with different options
(Price for the installation of one application).

For, please write or contact AXIALIS :

Martine BOCCANFUSO or Marc EMILE
AXIALIS SA
1, rue de Stockolm
75008 Paris
FRANCE
Phone : (33 1) 40.50.32.02 or (33 1) 44.70.71.89

You can also contact us at CompuServe : **100072,36**

