



## Contents for Text Blaster Help

Version 1.0, Copyright © 1994-1995 Ingenus Software. All rights reserved. Text Blaster(tm) and Ingenus(tm) are trademarks of Ingenus Software.

### [Introduction to Text Blaster](#)

#### **How To...**

[Select files for printing](#)

[Select a print style](#)

[Select a printer](#)

[Set Your Print Options](#)

[Run Text Blaster in Auto-Exec Mode](#)

[Integrate Text Blaster with File Manager](#)

[Set up an icon in Program Manager](#)

#### **Selected Topics**

[File Names Entry Control](#)

[File Names List Control](#)

[File Types List Control](#)

[Directories List Control](#)

[Drives List Control](#)

[Command Line Syntax](#)

#### **Other Information**

[Call for Enhancement Requests](#)

[Technical Support](#)

[Ingenus Software Direct Sales](#)

[About the Author](#)

#### **Legal**

[License Agreement](#)

[Limited Warranty](#)

[U.S. Government Restricted Rights](#)

## Introduction to Text Blaster

Text Blaster is an indispensable print utility program for people who print text files and IBM mainframe SYSOUT files on Windows page printers (laser or ink jet). With Text Blaster you can quickly produce very high quality printouts of your text files in any of sixteen predefined styles. And, true to its name, it is fast!

### Input Text Files Supported

- Plain ASCII text files (80, 100, 115, or 132 chars per line)
- Mainframe SYSOUT files (80 or 132 chars per line plus carriage control)

### Print Styles Supported

- Text - Portrait, 80 chars/line, 1 column/page
- Text - Landscape, 80 chars/line, 2 columns/page
- Text - Landscape, 80 chars/line, 3 columns/page
- Text - Portrait, 80 chars/line, 4 columns/page
- Text - Portrait, 100 chars/line, 1 column/page
- Text - Landscape, 100 chars/line, 2 columns/page
- Text - Portrait, 115 chars/line, 1 column/page
- Text - Landscape, 115 chars/line, 2 columns/page
- Text - Landscape, 132 chars/line, 1 column/page
- Text - Portrait, 132 chars/line, 2 columns/page
- Mainframe SYSOUT - Portrait, 80 chars/line, 1 column/page
- Mainframe SYSOUT - Landscape, 80 chars/line, 2 columns/page
- Mainframe SYSOUT - Landscape, 80 chars/line, 3 columns/page
- Mainframe SYSOUT - Portrait, 80 chars/line, 4 columns/page
- Mainframe SYSOUT - Landscape, 132 chars/line, 1 column/page
- Mainframe SYSOUT - Portrait, 132 chars/line, 2 columns/page

**Text File**

A text file is one which contains unformatted ASCII text data. A text file is created by a program such as Notepad and usually has a file name extension of txt. There are other file name extensions used for files which contain ASCII text: .ini, .bat, .c, .h, .cpp, .bas, .frm, and many others.

**Mainframe SYSOUT Files**

Mainframe SYSOUT files are text files which contain print records which would normally be printed on an IBM mainframe printer. The first character of each line contains a carriage control code which controls line spacing and page ejecting. They are typically transferred to a PC via the IBM IND\$FILE file transfer program and a mainframe terminal emulator program such as IBM PC3270, Attachmate Extra!, or DCA IRMA. Text Blaster supports both ANSI and IBM machine carriage control codes.

**UNC Names**

UNC is an acronym for Universal Naming Convention. A UNC name specifies a file via its network server and share name instead of using a drive letter. A UNC name is of the form: \\myservername\mysharename\mypath\myfilename. UNC names are supported by many network operating systems including Microsoft Networking and Novell Netware. Contact your network administrator for a list of the server and share names available on your network.

**File Name Mask**

A file name mask can contain the wildcard characters ? and \*. The question mark ? wildcard character will match any single character. The asterisk \* wildcard character will match any series of characters. Entering a file name mask will constrain the file names displayed.

## Selecting Files for Printing

When Text Blaster starts up you are presented with a dialog which works just like the common File Open dialog which many Windows applications use. There are five controls on this dialog which you use to select files and navigate through the drive and directory hierarchy:

1. File Names Entry Control
2. File Names List Control
3. File Types List Control
4. Directories List Control
5. Drives List Control

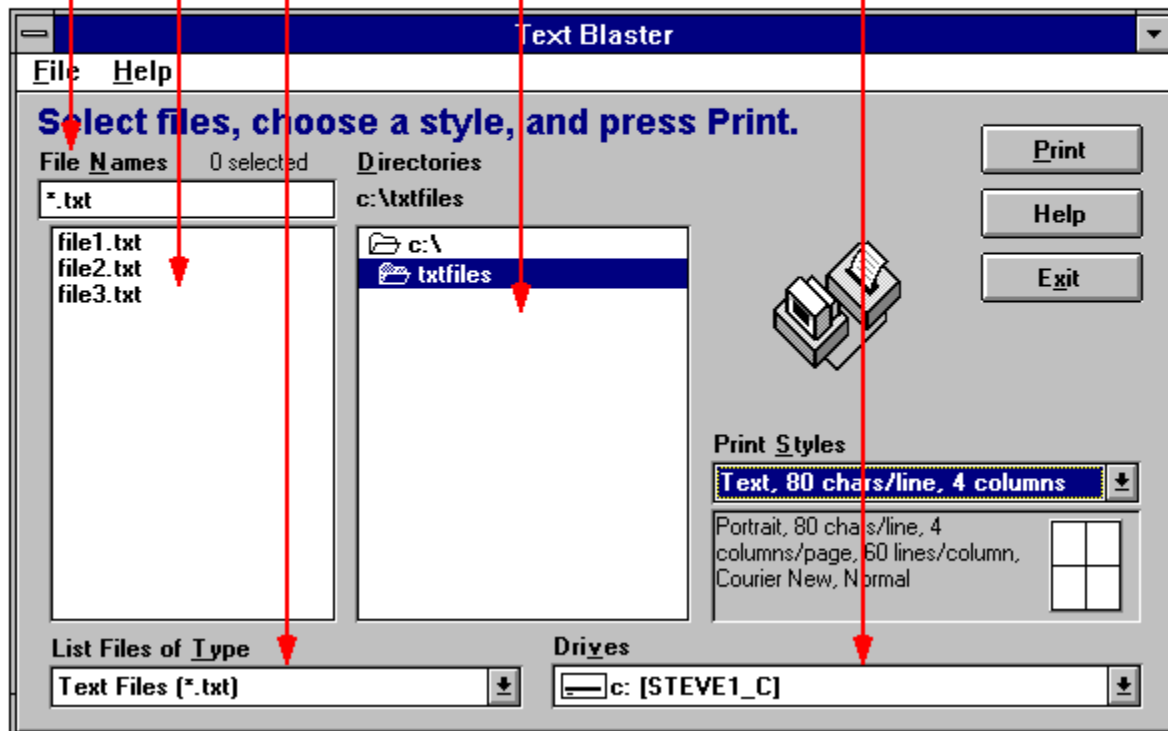
### File Names Entry Control

### File Names List Control

### File Types List Control

### Directories List Control

### Drives List Control



## File Names Entry Control

This control allows you to enter commands to Text Blaster via the keyboard. To use this field, type a command and press ENTER.

Note: Use of this control is optional. The best way to select files is generally with the mouse.

### **Commands and Examples**

- **Print a file**
  - In the current directory: myfile.txt
  - In an absolute directory: c:\mydir\myfile.txt
  - In an absolute directory: \\myserver\myshare\mydir\myfile.txt (UNC name)
  - In a subordinate directory: mydir1\mydir2\myfile.txt
- **Change directory**
  - To an absolute directory: c:\mydir1\mydir2
  - To an absolute directory: \\myserver\myshare\mydir1\mydir2 (UNC name)
  - To a subordinate directory: mydir1\mydir2
  - To the parent directory: .. (two periods)
  - To the root directory: \ (back slash)
- **Change drive**
  - By letter: c:
  - By UNC name: \\myserver\myshare
- **Specify File name mask:** myfile.\* or myfile.?



## File Names List Control

This control displays a scrollable list of the file names in the current directory which match the current file name mask. You can select one or more files with the mouse by clicking on their names. This click-to-select operation works the same as in File Manager. There are several mouse shortcut operations available:

- SHIFT-clicking    You can select a range of files by holding down the SHIFT key as you click on the first file in the range and then again on the last file.
  
- CTRL-clicking    You can select multiple files one at a time by holding down the CTRL key as you click on the file names. You can deselect a selected file by clicking on its name a second time.
  
- Double-clicking    You can quickly print a single file by double-clicking on its name.
  
- Click-Dragging    You can quickly select a range of files by dragging across them like this: 1. Click the left mouse button on the first file name and hold it down. 2. Drag across file names until you reach the last file name in the desired range. 3. Release the left mouse button. After this sequence of actions, the entire range of file names will be highlighted. You can then press the Print button to print all of them in one run.

## File Types List Control

This control is a pull-down list from which you can select one of the predefined file types to be displayed in the File Names List Control. The predefined file types are:

- All Files (\*.\*)
- Text Files (\*.txt)
- C Files (\*.c, \*.cpp, \*.h, \*.hpp, \*.rc, \*.def)
- BASIC Files (\*.bas, \*.frm)
- Batch Command Files (\*.bat)
- Parameter Files (\*.ini)

If you would like to limit the list of files displayed using a custom mask, just type the mask(s) in the File Names Entry Control. If you type multiple name masks, separate them with a semicolon (e.g. \*.txt;\*.ini).

Note: Text Blaster will remember your file type setting from run to run so you will always start from where you left off.

## Directories List Control

This control displays a scrollable list of the subdirectory names in the current directory. The current directory path is displayed above the scrollable list. You can change the current directory by double-clicking on any directory name displayed in the list.

Note 1: Text Blaster will remember your current drive and directory from run to run so you will always start from where you left off.

Note 2: You can also navigate through the directory hierarchy by entering special values in the File Names Entry Control. These are similar to the operands of the MS-DOS ChDir (CD, change directory) command.

## Drives List Control

This control is a pull-down list from which you can select any drive which is defined to your computer.

Note 1: Text Blaster will remember your current drive and directory from run to run so you will always start from where you left off.

Note 2: You can also navigate through the directory hierarchy by entering special values in the File Names Entry Control. These are similar to the operands of the MS-DOS ChDir (CD, change directory) command.

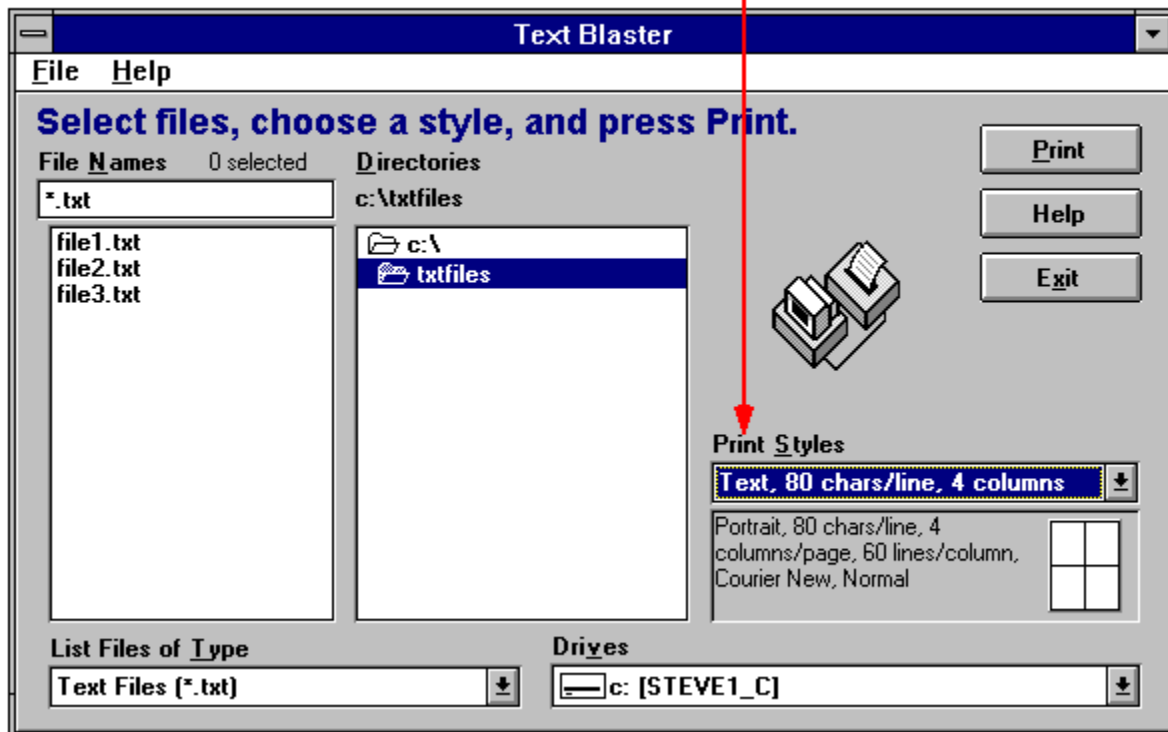
## Selecting a Print Style

Text Blaster supports sixteen predefined print styles. You choose a style by clicking on the drop-down list of styles displayed in the lower right side of the main window. A sample graphic appears above the drop-down list which illustrates what your print will look like. A detailed description of the style appears below the drop-down control. Text Blaster will remember your style setting from run to run so you will always start from where you left off.

### Print Styles Supported

- Text - Portrait, 80 chars/line, 1 column/page
- Text - Landscape, 80 chars/line, 2 columns/page
- Text - Landscape, 80 chars/line, 3 columns/page
- Text - Portrait, 80 chars/line, 4 columns/page
- Text - Portrait, 100 chars/line, 1 column/page
- Text - Landscape, 100 chars/line, 2 columns/page
- Text - Portrait, 115 chars/line, 1 column/page
- Text - Landscape, 115 chars/line, 2 columns/page
- Text - Landscape, 132 chars/line, 1 column/page
- Text - Portrait, 132 chars/line, 2 columns/page
- Mainframe SYSOUT - Portrait, 80 chars/line, 1 column/page
- Mainframe SYSOUT - Landscape, 80 chars/line, 2 columns/page
- Mainframe SYSOUT - Landscape, 80 chars/line, 3 columns/page
- Mainframe SYSOUT - Portrait, 80 chars/line, 4 columns/page
- Mainframe SYSOUT - Landscape, 132 chars/line, 1 column/page
- Mainframe SYSOUT - Portrait, 132 chars/line, 2 columns/page

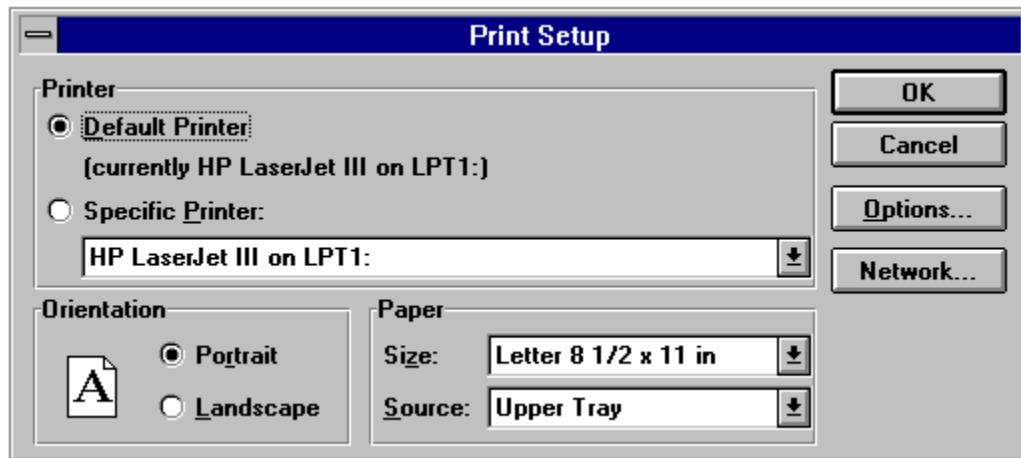
Print Styles List Control and Sample Graphic



## Selecting a Printer

Like many Windows programs, Text Blaster uses your Windows default printer. You can change the default printer by selecting the File menu and clicking Print Setup. The Print Setup dialog appears below.

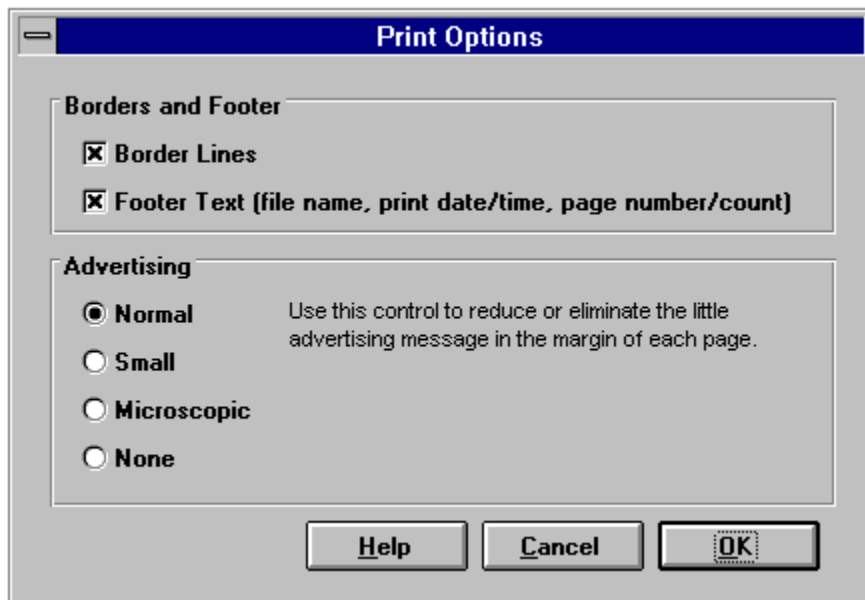
Note: Since Text Blaster uses the Windows default printer, be aware that when you change the default printer via Text Blaster it will change it for your entire Windows session. This includes the printer orientation (portrait vs. landscape).



## Print Options

There are a few print options you can set which apply to all Text Blaster runs you do. The setting of these options will be retained for all print runs until you change them. To set them select the File menu and choose the Options command. The options are:

- **Border Lines:** Turns the border lines on and off. These are the lines which appear around each column.
- **Footer Text:** Turns the footer on and off. The footer contains the file name, the date and time printed, and the page number/count.
- **Advertising:** Controls the tiny Text Blaster advertising which appears in the right margin. Thanks for advertising that you use Text Blaster!



## Running Text Blaster in Auto-Exec Mode

In addition to the quick point and click method of running Text Blaster, you can also run it in auto-execute mode by entering parameters on the command line. When you do this Text Blaster will automatically start, print one or more files in the style of your choice, and then shut itself down.

The Text Blaster Setup program creates an example auto-execute icon called Text Blaster Auto-Exec Example. The example will print the Text Blaster ReadMe file. In the Program Manager you can modify this icon for your own purposes using the Properties command on the File menu, or copy it using the Copy command on the File menu.

### **Related Topics**

[Syntax of the command line](#)

[How to set up an icon in Program Manager](#)



## Command Line Syntax

The syntax of the Text Blaster command line is shown below:

```
tblaster.exe [/s:stylecode] [textfilename] [textfilename...]
```

The braces [ and ] indicate that the parameter is optional. The ellipses (...) indicates that the list of text file names can be extended. Do not type the braces or the ellipses on your command line. If all parameters are omitted from the command line, Text Blaster will run in its normal interactive mode allowing you to select files with the mouse.

*stylecode*      OPTIONAL. If this parameter is omitted, Text Blaster will use the TEXT80.1 style.

There are sixteen styles supported by Text Blaster:

<b>Style Code</b>	<b>Style Description</b>
TEXT80.1	Text - Portrait, 80 chars/line, 1 column/page
TEXT80.2	Text - Landscape, 80 chars/line, 2 columns/page
TEXT80.3	Text - Landscape, 80 chars/line, 3 columns/page
TEXT80.4	Text - Portrait, 80 chars/line, 4 columns/page
TEXT100.1	Text - Portrait, 100 chars/line, 1 column/page
TEXT100.2	Text - Landscape, 100 chars/line, 2 columns/page
TEXT115.1	Text - Portrait, 115 chars/line, 1 column/page
TEXT115.2	Text - Landscape, 115 chars/line, 2 columns/page
TEXT132.1	Text - Landscape, 132 chars/line, 1 column/page
TEXT132.2	Text - Portrait, 132 chars/line, 2 columns/page
MAINFRAME80.1	<u>Mainframe SYSOUT</u> - Portrait, 80 chars/line, 1 column/page
MAINFRAME80.2	<u>Mainframe SYSOUT</u> - Landscape, 80 chars/line, 2 columns/page
MAINFRAME80.3	<u>Mainframe SYSOUT</u> - Landscape, 80 chars/line, 3 columns/page
MAINFRAME80.4	<u>Mainframe SYSOUT</u> - Portrait, 80 chars/line, 4 columns/page
MAINFRAME132.1	<u>Mainframe SYSOUT</u> - Landscape, 132 chars/line, 1 column/page
MAINFRAME132.2	<u>Mainframe SYSOUT</u> - Portrait, 132 chars/line, 2 columns/page

*textfilename*      OPTIONAL. The name of the text file to be printed. This name can be preceded by the full drive letter and path or UNC name and path if desired. If this parameter is omitted Text Blaster will run interactively instead of in auto-exec mode.

**Example 1:** Run Text Blaster interactively allowing you to select files with the mouse:

```
tblaster.exe
```

**Example 2:** Print c:\mydir1\myfile1.txt using the text80.2 style:

```
tblaster.exe /s:text80.2 c:\mydir1\myfile1.txt
```

**Example 3:** Print two files, c:\mydir1\myfile1.txt and c:\mydir2\myfile2.txt, using the text80.4 style:

```
tblaster.exe /s:text80.4 c:\mydir1\myfile1.txt c:\mydir2\myfile2.txt
```

**Example 4:** Print file \\myserver\myshare\mydir1\mydir2\myfile.txt (a UNC name) using the mainframe132.2 style. This file contains IBM mainframe SYSOUT with carriage control characters in the first position of each line.

```
tblaster.exe /s:mainframe132.2 \\myserver\myshare\mydir1\mydir2\myfile.txt
```

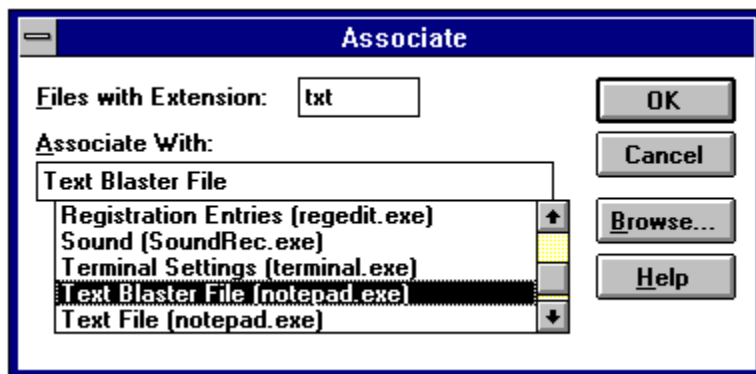
## Integrating Text Blaster with File Manager

In the Windows File Manager, when you select a text file and then choose the Print command on the File menu, the Windows Notepad is normally run to print your file. You can configure your system to run Text Blaster instead by associating the file name extensions with Text Blaster instead of Notepad. Of course, the Windows Notepad will still be used for editing when you choose the Open command on the File Manager File menu or when you double-click on a text file.

### Steps

1. In the File Manager, select Associate from the File menu. This will display the Associate dialog (see below).
2. Type the file name extension you wish to associate with Text Blaster in the Files with Extension field. For example, you could type TXT to associate plain text files with Text Blaster.
3. Scroll the Associate With list to the Text Blaster File entry. Click it with the mouse to highlight it.
4. Press OK.

You can reverse this setting by re-associating the file name extension with Text File.

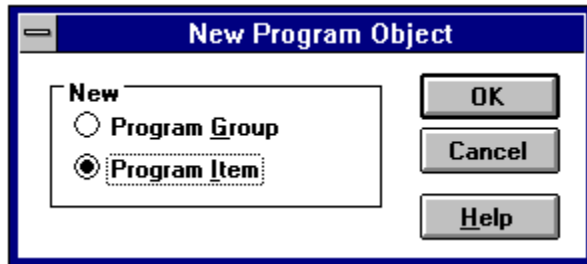


## Setting Up an Icon in Program Manager

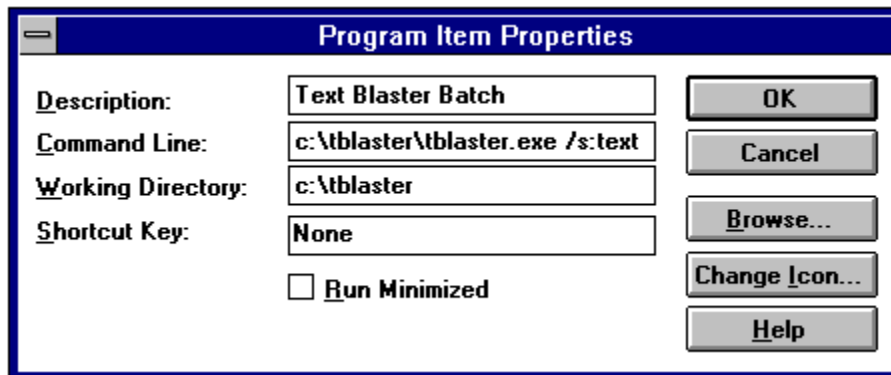
If you often print the same file name repeatedly, it may be useful to set up an icon in the Program Manager which runs Text Blaster automatically to print the file.

### Steps

1. Choose the New command on the File menu in the Program Manager.
2. When the New Program Object dialog appears (below), choose Program Item and click OK.



3. When the Program Item Properties dialog appears (below), enter the data as shown. Enter the entire Text Blaster command line in the Command Line field (some of it is not visible in the snapshot below).



## Call for Enhancement Requests

We want Text Blaster to live up to its billing as The Ultimate Text File Print Utility. If you would like to see a feature added to Text Blaster, please let us know. We will give your request careful consideration and you will likely see it in a future release!

Please write, FAX, or e-mail to:

INGENUS SOFTWARE  
ATTN: TEXT BLASTER ENHANCEMENTS  
920 EAST COLORADO BOULEVARD, #434  
PASADENA, CALIFORNIA 91106

INGENUS.SOFTWARE@PACONLINE.COM E-MAIL

(213) 344-4444 BBS (PACIFIC ONLINE, USER ID: INGENUS SOFTWARE)  
(213) 344-7190 FAX (ATTN: TEXT BLASTER ENHANCEMENTS)

## Technical Support

As an Ingenus customer you have access to technical support for help with any Text Blaster problems you cannot solve yourself. To register for this support, fill out your customer registration card and mail it to Ingenus Software (you are already registered if you obtained your software directly from Ingenus). Ingenus Software provides technical support via BBS, Internet e-mail, FAX, and telephone (limited schedule...please call for the current schedule). Ingenus Technical Support Services are subject to Ingenus then-current price, terms and conditions and is subject to change without notice.

Online Technical Support  
Support By Telephone

(213) 344-7190      FAX (ATTN: TECH SUPPORT)

INGENUS SOFTWARE  
ATTN: TECHNICAL SUPPORT  
920 EAST COLORADO BOULEVARD, #434  
PASADENA, CALIFORNIA 91106

## **Online Technical Support**

Online Technical Support is very convenient. It is available 24 hours per day and 365 days per year. Ingenus Software is committed to providing excellent online technical support. We view it as an important channel to provide support to our customers. If you have a modem be sure to try this method. When you contact us electronically expect prompt, accurate, professional answers to your questions from Ingenus Software support specialists.

### **Ingenus Software Support Conference on Pacific Online**

1. Set your terminal software to ANSI terminal emulation, 8 data bits, no parity bits, 1 stop bit (8-N-1).
2. Call (213) 344-4444 with your modem (up to 14,400 bps).
3. When prompted enter your first name, last name, and password of your choice.
4. At the main menu enter C for conferences.
5. At the conferences menu choose I for the Ingenus Software Support Conference.

### **Ingenus Software Support via the Internet**

Send electronic mail to: [ingenus.software@paconline.com](mailto:ingenus.software@paconline.com)

## **Support By Telephone**

Ingenus Software provides live technical support by telephone on a limited schedule at the number listed below. Please call for the current schedule.

In order for us to serve you better, please prepare for your support call as follows:

- You should be at your computer and have the appropriate product documentation at hand.
- Know your product version and serial numbers.
- Be prepared to describe the type of hardware you are using.
- Be ready to describe what happened and what you were doing when the problem occurred.
- Have available the exact text of any error messages you received.
- Be ready to describe what you have already tried to do to solve the problem so you and the support specialist can start from where you have left off.
- Try to isolate the problem as much as possible. Also, it would be best if you could recreate the problem on demand.

**TECHNICAL SUPPORT**

(213) 344-4441



## **Ingenus Software Direct Sales**

To order products directly from Ingenus, please contact us via our toll-free sales line or any of the methods listed below. For your convenience you can charge your order to your American Express, VISA, or Mastercard.

(800) TO-INGENUS SALES  
(213) 344-4440 SALES  
(213) 344-7190 FAX (ATTN: SALES)  
(213) 344-4444 BBS (PACIFIC ONLINE, USER ID: INGENUS SOFTWARE)

INGENUS.SOFTWARE@PACONLINE.COM E-MAIL

INGENUS SOFTWARE  
ATTN: DIRECT SALES  
920 EAST COLORADO BOULEVARD, #434  
PASADENA, CALIFORNIA 91106

## About the Author

Steve Jackson is a computer software developer and technical consultant specializing in IBM mainframe system and application development and client/server computing with Microsoft Windows. He lives in Los Angeles, California.

STEVE JACKSON  
INGENUS SOFTWARE  
920 EAST COLORADO BOULEVARD, #434  
PASADENA, CALIFORNIA 91106

STEVE.JACKSON@PACONLINE.COM E-MAIL

(213) 344-4444 BBS (PACIFIC ONLINE, USER ID: STEVE JACKSON)  
(213) 344-7190 FAX (ATTN: STEVE JACKSON)

# Ingenus License Agreement

This is a legal agreement between you (either an individual or an entity) and Ingenus Software. By opening the sealed software packages and/or by using the SOFTWARE, you agree to be bound by the terms of this Agreement. If you do not agree to the terms of this Agreement, promptly return the disk package and accompanying items (including printed materials and binders or other containers) to the place you obtained them for a full refund.

## INGENUS LICENSE AGREEMENT

1. GRANT OF LICENSE. This Ingenus License Agreement (License) permits you to use one copy of the specified version of the Ingenus software product, which may include user documentation provided in online or electronic form (SOFTWARE). If this package is a License Pak, you may make and use additional copies of the SOFTWARE up to the number of Licensed Copies. The SOFTWARE is licensed as a single product. Its component parts may not be separated for use on more than one computer or by more than one user at any time. If you have multiple Licenses for the SOFTWARE, then at any time you may have as many copies of the SOFTWARE in use as you have Licenses. The SOFTWARE is in use on a computer when it is loaded into temporary memory (i.e. RAM) or installed into the permanent memory (e.g. hard disk, CD-ROM, or other storage device) of that computer, except that a copy installed on a network server for the sole purpose of distribution to other computers is not in use. If the anticipated number of users of the SOFTWARE will exceed the number of applicable Licenses, then you must have a reasonable mechanism or process in place to ensure that the number of persons using the SOFTWARE concurrently does not exceed the number of Licenses. If the SOFTWARE is permanently installed on the hard disk or other storage device of a computer (other than a network server) and one person uses that computer more than 80% of the time it is in use, then that person may also use the SOFTWARE on a portable or home computer.

2. UPGRADES. If the SOFTWARE is an upgrade from another product, whether from Ingenus or another supplier, you may use or transfer the SOFTWARE only in conjunction with the upgraded product, unless you destroy it. If the SOFTWARE is an upgrade from a Ingenus product, you now may use that upgraded product only in accordance with this License.

3. COPYRIGHT. The SOFTWARE (including any images, applets, photographs, animations, video, audio, music and text incorporated into the SOFTWARE) is owned by Ingenus or its suppliers and is protected by United States copyright laws and international treaty provisions. Therefore, you must treat the SOFTWARE like any other copyrighted material (e.g., a book or musical recording) except that you may either (a) make one copy of the SOFTWARE solely for backup or archival purposes, or (b) transfer the SOFTWARE to a single hard disk provided you keep the original solely for backup or archival purposes. You may not copy the printed materials accompanying the SOFTWARE, nor print copies of any user documentation provided in online or electronic form.

4. OTHER RESTRICTIONS. This License is your proof of license to exercise the rights granted herein and must be retained by you. You may not rent or lease the SOFTWARE, but you may transfer your rights under this License on a permanent basis provided you transfer this License, the SOFTWARE and all accompanying printed materials, retain no copies, and the recipient agrees to the terms of this License. You may not reverse engineer, decompile, or disassemble the SOFTWARE, except to the extent the foregoing restriction is expressly prohibited by applicable law.

5. DUAL MEDIA SOFTWARE. You may receive the SOFTWARE in more than one media. Regardless of the type or size of media you receive, you may use only the media appropriate for your single designated computer or network server. You may not use the

media on any other computer or computer network, or loan, rent, lease, or transfer them to another user except as part of a permanent transfer (as provided above) or other use expressly permitted by this License.

If you acquired this product in the United States, this Agreement is governed by the laws of the State of California. If this product was acquired outside the United States, then local laws may apply.

Should you have any questions concerning this Agreement, or if you desire to contact Ingenus for any reason, please write: Ingenus Software/920 E. Colorado Blvd. #434/Pasadena, CA 91106.

## Limited Warranty

**LIMITED WARRANTY.** Ingenus warrants that (a) the SOFTWARE will perform substantially in accordance with the accompanying printed materials for a period of ninety (90) days from the date of receipt; and (b) any hardware accompanying the SOFTWARE will be free from defects in materials and workmanship under normal use and service for a period of one (1) year from the date of receipt. Any implied warranties on the SOFTWARE and hardware are limited to ninety (90) days and one (1) year, respectively. Some states/jurisdictions do not allow limitations on duration of an implied warranty, so the above limitation may not apply to you.

**CUSTOMER REMEDIES.** Ingenus entire liability and your exclusive remedy shall be, at Ingenus option, either (a) return of the price paid or (b) repair or replacement of the SOFTWARE or hardware that does not meet Ingenus Limited Warranty and that is returned to Ingenus with a copy of your receipt. This Limited Warranty is void if failure of the SOFTWARE or hardware has resulted from accident, abuse, or misapplication. Any replacement SOFTWARE will be warranted for the remainder of the original warranty period or thirty (30) days, whichever is longer. Outside the United States, neither these remedies nor any product support services offered by Ingenus are available without proof of purchase from an authorized non-U.S. source.

**NO OTHER WARRANTIES.** To the maximum extent permitted by applicable law, Ingenus disclaims all other warranties, either express or implied, including but not limited to implied warranties of merchantability and fitness for a particular purpose, with respect to the SOFTWARE, the accompanying written materials, and any accompanying hardware. This limited warranty gives you specific legal rights. You may have others, which vary from state/jurisdiction to state/jurisdiction.

**NO LIABILITY FOR CONSEQUENTIAL DAMAGES.** To the maximum extent permitted by applicable law, in no event shall Ingenus or its suppliers be liable for any damages whatsoever (including, without limitation, damages for loss of business profits, business interruption, loss of business information, or other pecuniary loss) arising out of the use or inability to use this Ingenus product, even if Ingenus has been advised of the possibility of such damages. Because some states/jurisdictions do not allow the exclusion or limitation for consequential or incidental damages, the above limitation may not apply to you.

## **U.S. Government Restricted Rights**

The SOFTWARE and documentation are provided with RESTRICTED RIGHTS. Use, duplication, or disclosure by the Government is subject to restrictions as set forth in subparagraph (c)(1)(ii) of the Rights in Technical Data and Computer Software clause at DFARS 252.227-7013 or subparagraphs (c)(1) and (2) of the Commercial Computer Software-Restricted Rights at 48 CFR 52.227-19, as applicable. Manufacturer is Ingenus Software/920 E. Colorado Blvd. #434/Pasadena, CA 91106.

