

About WISDN: V2 Sept 1995, Shareware

The original ISDN version of WISDN requires specialised hardware and an ISDN line to be installed. The shareware version of the software works with ordinary telephone lines (PSTN) and standard modems. It is slower but does make use of the range of features provided by WISDN. Upgrading from the ordinary telephone system to ISDN or using both ISDN and can be achieved by upgrading the software and hardware.

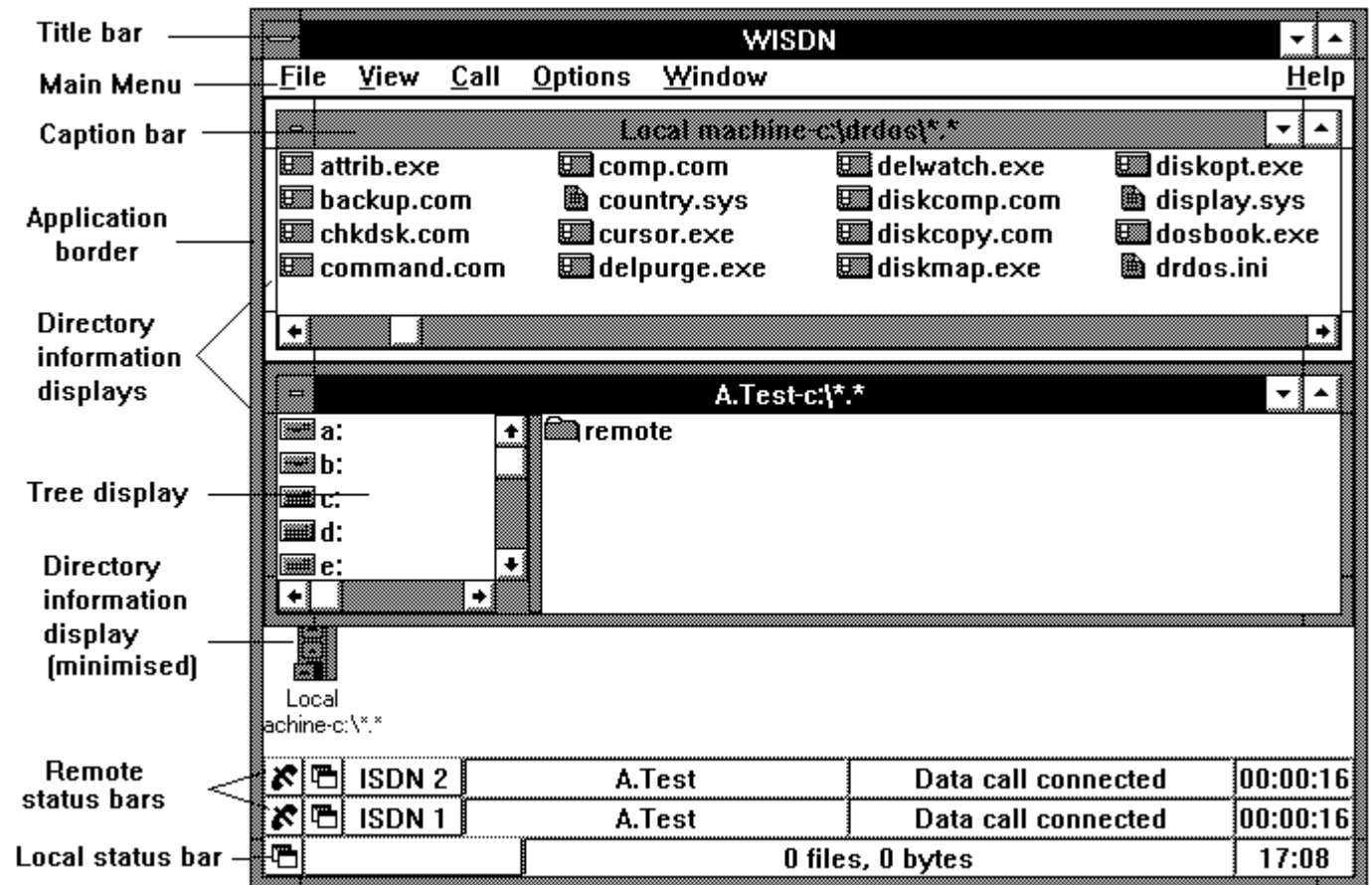
For further information on WISDN contact:

Peter Lambert,
 CliPet communications, Ferry Side, Ferry Road, Norwich, NR1 1ST.
 Tel No 01603 618899
 Fax No 01603 618899
 ISDN No 01603 760813
 E-Mail Compuserve 100662.2143@compuserve.com

WISDN and Windows 3.1

Windows provides an environment which is both intuitive and flexible. The WISDN Windows interface will be familiar to existing Windows users. WISDN can be used as an alternative to the file manager but its real benefit is that it provides the same interface to remote machines. For example, the same 'drag and drop' operations used for copying files on the local machine are used to transfer files between computers.

The diagram shows two computers connected :



WISDN offers certain features which aid call control and general system management. These include:

- Separate status lines for calls which indicate state of call
- User variable ringing tone
- Access control can be set up independently for all remote users
- Different access rights can be provided for each drive
- Saving of choices and preferences for subsequent sessions
- Function key options for major operations
- Support for multiple phonebooks
- Separate phonebook control for audio and data calls
- Integration of phonebook with the dialling function and automatic updating of phonebook
- Quick access to phonebook items
- Support for both mouse and keyboard input
- Call log with options to determine which calls are recorded
- Multitasking of the services (disk manager and remote control) operating under the WISDN system
- Control of remote machine
- Prevention of remote access of the local machine
- Password protection to prevent unauthorised use of remote control and disk access

WISDN provides the following basic file management features:

- Display of drive, directory and file information of local and remote computer
- Multiple directories can be displayed and arranged in cascade, tile, or normal column modes
- File management functions on both local and remote machine (copy, delete, etc.)
- Action only on those files which are visible
- Control of transfers between a number of remote machines
- Deferred transfers to take advantage of off peak rates, using 'Parcels'
- Parcel contents can be set up on the local or remote machine
- Repeated, timed, transfers for regular transmission of files
- Wildcards allow files that do not exist when setting up a deferred transfer to be included
- Desktop icons of destinations to which files are regularly sent
- 'Shared' directory to allow remote machine to specify the destination directory for files sent
- Cancelling of copying and deleting while they are in progress
- Independent control of the display of each of the multiple windows
- Informative dialogue boxes and status bars for indicating the progress of particular actions
- Local programs can be launched from within the application
- Copy by select, 'drag' and 'drop' using mouse or by using a template including wildcards
- Multiple files can be selected for deletion and copying
- User can select file details and order of files to be displayed
- Files included in the display can also be chosen by the user
- Left column displays drive/directory/subdirectory information (Tree Structure)
- Right column displays directory/file information
- Tree Structure can be removed or resized to provide greater display area for files
- Association of programs with data files
- Ability to create directories on local and remote machines
- Compatible with Windows File Manager 'drag' and 'drop'
- On-line help system

WISDN provides the following basic remote control features:

- Full screen display of remote machine
- Remote display in scrollable Window
- Remote display scaled to fit Window
- Mouse and keyboard input can be switched between the two connected machines

The remote control software was designed and developed to work with the applications supplied with Windows, Notepad, Write, Paintbrush, Calculator etc. This design criteria was used because:-

- it is not possible to test the remote control software with all applications
- these application provides a useful if limited range of tools
- these applications are likely to be installed on the remote machine.

Although the remote control software has been designed for the lowest common denominator the mechanism used has general applicability across a range of applications and should be useable with a wide range of packages. CliPet will continue to identify applications that do not work effectively with the remote control and upgrade WISDN accordingly. Areas where difficulties are likely are where extensions (Pen, Multimedia) to the Windows API have been used.

WISDN and Windows 95

WISDN file management and remote control has been tested with a beta release of Windows 95. A machine running Windows 95 can be used to control a machine running Windows 3.x but not the other way around. The file transfer software will work in any combination of Windows 3.1 and Windows 95.