

LinkMate 1.0

Copyright © 1997 Mike Davis

LinkMate is a utility for Windows 95 or NT that can assist you in managing all the shortcuts, or links, (files with a .LNK extension) on your hard drives. How many times have you moved a file to a new location, invalidating the shortcut pointing to that file; or, deleted a program and were left with a shortcut that references a non-existent file? LinkMate will search your hard drives and list all shortcuts which no longer reference valid targets. From this point, you have several options. You can delete the shortcut. You can attempt to repair the shortcut by searching all hard drives for the target. Or, you can specify a completely different target, even changing such properties as the working directory, command line arguments, or the icon. With hard drives of 2 to 3 gigabytes (and larger) becoming the "norm", multiple partitions are also much more common. This leads to having shortcuts on drive C, while the target for that shortcut exists on drive D or E. Windows will only search on the same logical hard drive that the shortcut exists on. LinkMate can search for the target across all logical hard drives.

LICENSE AGREEMENT

Any use of this software constitutes acceptance of this License Agreement.

LinkMate and its accompanying documentation are copyrighted works and have been released for distribution as Shareware. Non-registered users are granted a limited license to evaluate this program, without cost, for a period of thirty (30) days with limited technical support, after which time the program must either be registered or removed from the system.

Use of LinkMate beyond the 30 day evaluation period, without registering, is expressly forbidden and is in violation of U.S. and International Copyright Laws.

No person other than the author, Mike Davis, may accept payment or royalties for this software.

Technical support is granted to non-registered users solely at the author's discretion.

THE AUTHOR DISCLAIMS ALL WARRANTIES RELATING TO THIS SOFTWARE, WHETHER EXPRESSED OR IMPLIED, INCLUDING, BUT NOT LIMITED TO, ANY IMPLIED WARRANTIES OF MERCHANTABILITY AND FITNESS FOR A PARTICULAR PURPOSE AND ALL SUCH WARRANTIES ARE EXPRESSLY AND SPECIFICALLY DISCLAIMED. THIS SOFTWARE IS PROVIDED "AS IS". THE AUTHOR CLAIMS NO RESPONSIBILITY FOR ANY INDIRECT, CONSEQUENTIAL OR INCIDENTAL DAMAGES OR UNDESIRABLE RESULTS ARISING OUT OF THE USE, INABILITY TO USE, OR ABUSE OF THIS SOFTWARE EVEN IF THE AUTHOR HAS BEEN ADVISED OF THE POSSIBILITY OF SUCH DAMAGES OR CLAIMS. IN NO EVENT SHALL THE AUTHOR'S LIABILITY FOR DAMAGES EVER EXCEED THE PRICE PAID FOR THE LICENSE TO USE THIS SOFTWARE, REGARDLESS OF THE FORM OF CLAIM. THE PERSON USING THE SOFTWARE BEARS ALL RISK AS TO THE QUALITY AND PERFORMANCE OF THE SOFTWARE. THIS SOFTWARE REMAINS THE PROPERTY OF THE AUTHOR AND MAY NOT BE MODIFIED BY THE USER IN ANY WAY.

Some states do not allow the exclusion of the limit of liability for consequential or incidental damages, so the above limitation may not apply to you.

This agreement shall be governed by the laws of the State of Ohio and shall inure to the benefit of the author and any successors, administrators, heirs and assigns. Any action or proceeding brought by either party against the other arising out of or related to this agreement shall be brought only in court in Stark County, Ohio. The parties hereby consent to in personam jurisdiction of said courts.

Registered Version

Registered versions of this software may be used by one person who is using the software personally on one or more computers, or used nonsimultaneously by multiple people who are using the software on a single computer, but not both. Use of LinkMate on a network requires individual licenses for any and all workstations which have access to LinkMate. For example, if LinkMate can be accessed by 5 different workstations on a

network, each workstation must have its own license for the software regardless of whether they use LinkMate at different times or concurrently.

Under no circumstances may the Registration Key be given to any individuals, except to a registered user directly from the author.

Registering LinkMate entitles you to free upgrades, full technical support, and will eliminate the Registration Notice from appearing at various time throughout the software.

REGISTRATION

To register LinkMate, fill out the order form, which is displayed by clicking the Print Order Form button on the Registration Notice screen when the program launches. The cost of registering is \$14.95. Ohio residents must also add 5.75% sales tax. Payment **must** be in U.S. dollars and drawn on a U.S. bank. Sorry, but foreign currency will not be accepted.

If you have an Internet email address, the Registration Key to convert the program will be emailed to you. If you do not have an email address (or simply wish to receive the latest version on a 3.5 disk), there is a shipping charge based on the following rates:

\$4.00 for the U.S. and its territories

\$5.00 for Canada and Mexico

\$7.00 for all overseas orders

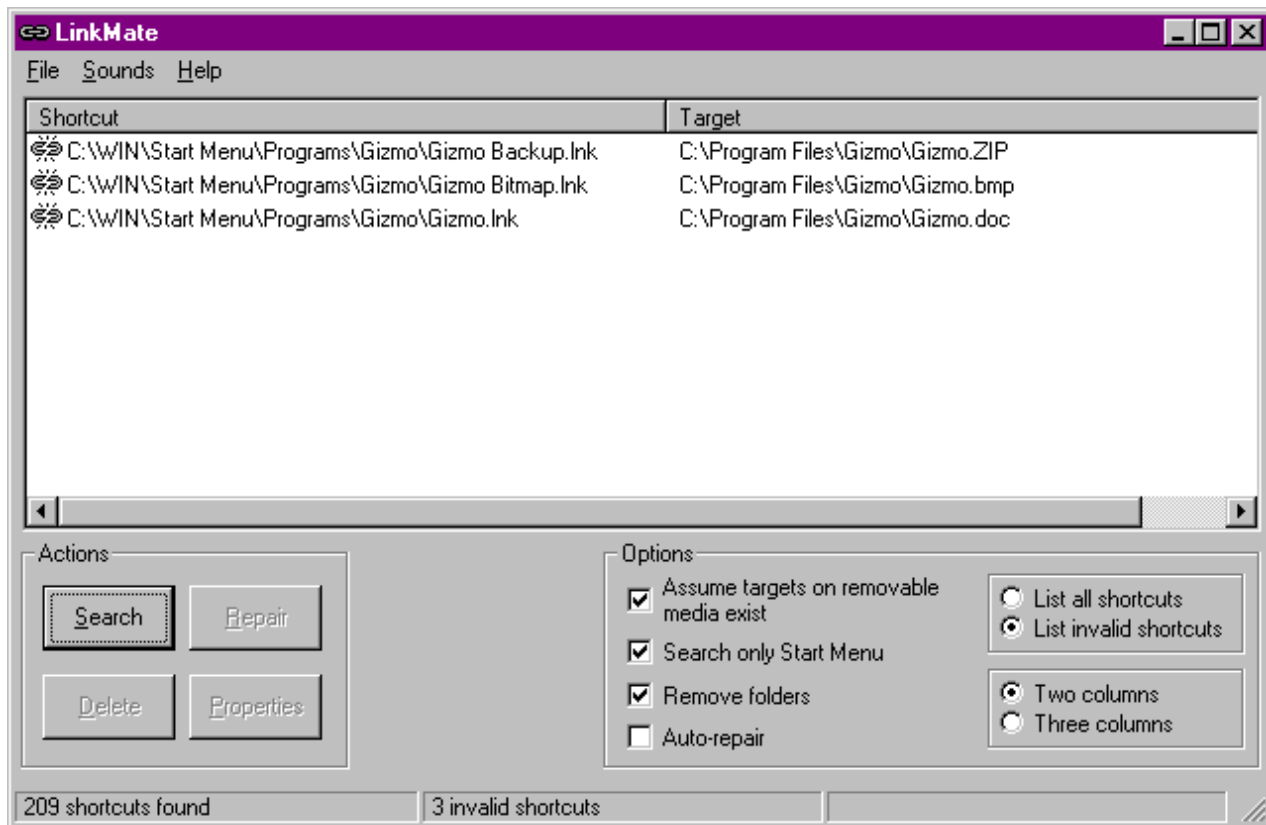
The Registration Key is guaranteed to work for all 1.x versions of LinkMate, making future updates free at least until version 2.0.

Those with Internet addresses are **highly** encouraged to receive the Registration Key via Email. I cannot be responsible for late, lost, or damaged mail. Also, you will save a minimum of \$4.00 and get the Registration Key sooner, usually within 1-2 business days *after* your check has cleared the bank (in realistic terms, about a week after receipt of order).

The order form is intended for a single user license only. If you are using LinkMate within a networked environment, contact the author at *mhdsoft@aol.com* to receive information on purchasing a multiple-user site license at reduced rates per user. A site license entitles an organization to install LinkMate on any number of computers or workstations up to the number granted by the license. Site license fees are determined on a case-by-case basis, but are always at reduced rates per user. Generally, the higher the number of users, the less cost per user the license will be.

Using LinkMate

Below is the main LinkMate window. Almost all features are accessible from this window.



Simply click the Search button to find all invalid shortcuts on your system. The 3 other actions you can perform are to delete the highlighted item, repair the highlighted item, or show the properties for the highlighted item.

Delete

Click this button to delete the highlighted shortcut(s) from your hard drives. To select an item, simply click on it underneath the Shortcut column. You can select multiple items by holding down the Control key while clicking on each item; or clicking the first item in a sequence, holding down Shift, and then clicking the last item in the sequence. This is the only action you can perform when multiple items are selected. A deleted shortcut can be restored by selecting the shortcut, clicking the Properties button, and then clicking the OK button from the Properties window.

Repair

Clicking this button will perform a search of all hard drives for the target of the invalid shortcut. Many times, a target has merely been moved to a different location, perhaps to another hard drive. If LinkMate can find this target, it will repair the shortcut with no additional interaction required. If LinkMate finds multiples copies of the same target (for example, it finds several files all with the same filename that the shortcut could potentially point to), it will display them in a list, allowing you to select the correct target. This button is disabled if multiple items are selected.

Properties

Click this button to display a window showing all the properties of the highlighted item. These properties include the shortcut's target, the Start In location (the working directory of the target), any command line arguments Windows should pass to the target, the file containing the shortcut's icon, the index of the icon, and the target's run state (normal window, minimized, or maximized). From this window, you can modify any of these properties. The Browse button on this window is context-sensitive. For example, if you click within the Target edit box and click Browse, you'll get an Open dialog box allowing you to select a file. If you click within the Start In edit box and then click Browse, you'll get a Browse for Folder dialog box. You can also just type in the appropriate information into any of the edit boxes. Don't worry. If you type in a path or filename that doesn't exist, LinkMate will catch it and alert you.

Options

There are several options you can choose from. They are described below.

Assume targets on removable media exists

It's very common to have shortcuts which point to targets on CD-ROMs or floppies. Unless the disk containing that target is inserted in the drive, LinkMate will list that shortcut as being invalid. Check this option to cause LinkMate to ignore shortcuts which point to targets existing on such media. Generally, it's a good idea to leave this option checked.

Search only Start Menu

The majority of shortcuts on a typical system exist within the Start Menu folder. Checking this option will cause LinkMate to search for shortcuts only in this folder and its subfolders, rather than search on all hard drives within your system. This reduces the time required to perform the search. Checking this option does *not* affect Linkmate's search when repairing an invalid shortcut. When repairing a shortcut, *all* hard drives are *always* searched.

Remove folders

Check this option to automatically delete any folders (but only if that folder has no other shortcuts or subfolders in it) after you've deleted any shortcut(s). This option also affects moving a shortcut to a different folder (see Miscellaneous below). By having this option enabled, your program groups listed under Windows' Start Button will be maintained automatically for you, meaning you won't get any empty groups (surely, you've moved the mouse over a group only to have Windows display "Empty"?)

Auto-repair

Check this option *before* you click the Search button and LinkMate will attempt to automatically repair any invalid shortcuts it finds without user-interaction. Essentially, this is the same as clicking Repair for every invalid shortcut listed. The only difference being that if multiple targets are found, LinkMate will *not* repair it, nor present the list of found targets. This process could take a while if there are a lot of invalid shortcuts.

List all shortcuts

List invalid shortcuts

Only one of these options may be selected at any time. *List all shortcuts* will display all shortcuts that are found, even valid ones. *List invalid shortcuts* will display on those shortcuts for which a target cannot be found.


Two columns

Three columns


Changes the display between 2-column and 3-column format. In 2-column format, the shortcut and its target are displayed. If a shortcut is repaired, it's target remains unchanged in this list (unless, of course, you perform another search). In 3-column format, an additional column is added which displays the new target of a repaired shortcut. It is beneficial to select the 3-column format in conjunction with the Auto-repair option so you can see what change LinkMate made to the shortcut.

Status Icons


LinkMate displays one of the following icons to the left of all shortcuts to indicate the status of that shortcut:


 The shortcut is invalid (that is, the target for the shortcut does not exist)

 The shortcut is valid

 The shortcut has been deleted

 The shortcut has been successfully repaired, modified, or restored

 The shortcut was not repaired during Auto-repair because multiple targets were found. These shortcuts can be repaired by selecting the shortcut, clicking the Repair button, and then selecting one of the possible targets displayed.

 An attempt to repair or modify the shortcut was not successful. Does not apply to a shortcut not repaired during an Auto-repair search

Miscellaneous

The list of shortcuts can be sorted by clicking on one of the column headers. The list can be sorted in ascending or descending order.

You can rename or move any shortcut by clicking it once to select it and then clicking it a second time (there must be a long enough pause between clicks to prevent Windows from interpreting it as a double-click). Alternatively, you can also press F2 in lieu of the second click. To rename the shortcut, change just the filename, keeping the path identical. To move the shortcut to another folder, type a different path. You can perform both of these operations simultaneously if you want. For example, if you type both a different path and filename, the shortcut will be moved and renamed. You cannot rename or move a shortcut that has been deleted, even though it is still listed.

Right-clicking the mouse on any shortcut will display a menu with the following commands: Rename, Delete, Repair, and Properties. Depending on the status of the shortcut, one or more of these may be disabled and cannot be selected. For example, if you right-click a shortcut that has already been deleted, the Delete, Repair, and Rename menu items (as well as those same command buttons) will be disabled.

Size and position of the main window, column widths, and options are saved each time the program is closed. These same values will be used the next time the program is started.

Technical Support

Finally, I hope you find LinkMate useful as well as easy to use. If there is something you don't like about it or some additional function you would like to see added, by all means, let me know. Users' comments and suggestions are any programmer's best source for making improvements to a program.

I would appreciate any comments regarding this program, including, but not limited to, bugs, ease of use, additional features you would like to see, and general usefulness. If you find any bugs, please let me know about them.

The preferred method of obtaining technical support is E-Mail, as you will get an answer in the shortest amount of time (usually within 24 hours). E-Mail should be sent to **MHDSOFT** on America Online or **mhdsoft@aol.com** via the Internet. You can, however, also write to the address found below and in the About box of LinkMate.

When writing for technical support, please be as detailed as possible about the problem you are having. If you receive an error message, state that message fully and exactly as it appears. The more detailed a description of the problem you have having, the easier it will be to diagnose the problem and provide a solution.

Mike Davis
1120 21st St. NW
Canton, Ohio 44709

Other Software Titles from the Author

WinEgress

This handy-dandy utility adds an icon to Win95's system tray (that's the part of the taskbar where the clock and speaker icons are located). Double-click this icon to immediately shut down Windows. Only saves a few mouse clicks over clicking the Start button and then Shutdown, but what a difference! Right click this icon and you get

most of the same options as Windows' Shutdown screen. You can also specify up to 10 programs to launch when you right click the icon. Since the taskbar is capable of always being visible, you're just a right click away from launching your 10 favorite programs. No more navigating through seemingly endless cascading menus via the Start Button, or minimizing programs to get to your Desktop icons. Requires Windows 95/NT.

Wallpaper Plus

A must-have utility for every wallpaper fanatic. Change your wallpaper instantly just by right clicking any .bmp or .rle file within Windows Explorer. Ten times easier than bringing up Win95's Display Properties page, which requires .bmp files to be in the Windows folder to be listed and won't list .rle files at all (but since they are smaller, they are better for wallpaper). Requires Win95/NT.

Clipboard Extender

This little program was named PC/Computing's "Win App of the Month" in March 1994. It also received favorable reviews in Windows OnLine Review Shareware and Colorado Computer Sun Times. Clipboard Extender is a valuable enhancement to the Windows clipboard, permitting ascii text, copied from an application to the clipboard, to be appended to ascii text which already exists in the clipboard, instead of it always being replaced. Requires Windows 3.1 or greater.

All of these programs, and more, can be found in the Windows Forum (keyword: WIN) of America Online or in the Windows Shareware Forum (GO WINSHARE) on CompuServe. If you wish, you may also send email to mhdsoft@aol.com requesting any of them. If you cannot receive email file attachments, be sure to include your name and postal address in your request.