

"Sync-it-yourself" Feature

The synchronization algorithm attempts to line up like text in the side-by-side File Viewer window. Its logic is based on finding a certain number of contiguous matching lines. At times the program lines up the wrong lines.

You can manually override the text synchronization by right-clicking the lines you would like to line up, selecting Link from the popup menu. The two lines that you select are forced together, and following lines are re-synchronized.

In the following example, we would like to synchronize the "begin" lines. First, right-click over the left pane and select Link:

| | |
|---|---|
| <pre>var CUFile:TCUFile; SessionIndex:Integer; begin {attempt to locate desired file in CUSession if (FAFSFile = nil) and (CUSession <> nil) then CUFile := (CUSession.Objects[SessionIndex] as TCUFile); if CUFile <> nil then if CUFile is TAFSFile then CUFile := TAFSFile as TCUFile; end if; end if; end if; end for; for SessionIndex := 0 to CUSession.Count - 1 do CUFile := (CUSession.Objects[SessionIndex] as TCUFile); if CUFile <> nil then if CUFile is TAFSFile then CUFile := TAFSFile as TCUFile; end if; end if; end for; end</pre> | <pre>var CUFile:TCUFile; SessionIndex:Integer; WasActive:Boolean; Index, AFSIndex:Integer; FieldDef:TAFSFieldDef; Field:TCUField; S:string; begin {attempt to locate desired file in CUSession if FAFSFile = nil then then CUFile := (CUSession.Objects[SessionIndex] as TCUFile); if CUFile <> nil then if CUFile is TAFSFile then CUFile := TAFSFile as TCUFile; end if; end if; end if; end for; end</pre> |
|---|---|

Then do the same over the right pane:

| | |
|---|---|
| <pre>var CUFile:TCUFile; SessionIndex:Integer; begin {attempt to locate desired file in CUSession if (FAFSFile = nil) and (CUSession <> nil) then CUFile := (CUSession.Objects[SessionIndex] as TCUFile); if CUFile <> nil then if CUFile is TAFSFile then CUFile := TAFSFile as TCUFile; end if; end if; end if; end for; for SessionIndex := 0 to CUSession.Count - 1 do CUFile := (CUSession.Objects[SessionIndex] as TCUFile); if CUFile <> nil then if CUFile is TAFSFile then CUFile := TAFSFile as TCUFile; end if; end if; end for; end</pre> | <pre>var CUFile:TCUFile; SessionIndex:Integer; WasActive:Boolean; Index, AFSIndex:Integer; FieldDef:TAFSFieldDef; Field:TCUField; S:string; begin {attempt to locate desired file in CUSession if FAFSFile = nil then then CUFile := (CUSession.Objects[SessionIndex] as TCUFile); if CUFile <> nil then if CUFile is TAFSFile then CUFile := TAFSFile as TCUFile; end if; end if; end if; end for; end</pre> |
|---|---|

The result:

| | |
|---|--|
| <pre> var CUFile:TCUFile; SessionIndex:Integer; begin {attempt to locate desired file in CUSessi if (FAFSFile = nil) and (CUSession <> nil) for SessionIndex := 0 to CUSession.Count CUFile := (CUSession.Objects[SessionIr </pre> | <pre> var CUFile:TCUFile; SessionIndex:Integer; WasActive:Boolean; Index, AFSIndex:Integer; FieldDef:TAFSFieldDef; Field:TCUField; S:string; begin {attempt to locate desired file in CUSessi if FAFSFile = nil then for SessionIndex := 0 to CUSession.Count CUFile := (CUSession.Objects[SessionIn </pre> |
|---|--|

You can use this feature several times to link up different parts of the files, as long as you work in a downward direction. Each manual link causes a re-synchronization of the text below it, which will undo any manual links in that area.

Appearance Options (File Viewer)

You can change the colors that are used to highlight differences in text. If you are using the program on a monochrome screen you should definitely change the colors so that mismatches show distinctly. The sample viewer display lets you preview your selections.

Matching Text

Select the color for entire lines of text that match.

Similar Text

Select the color for similar text. Similar text differs only in leading or trailing whitespace, or upper-lower-case mismatches. A small sample viewer display is provided for you to preview appearance selections.

Different Text

Select the color for text that doesn't match.

Missing Text

Choose the style for indicating the "holes" in text comparison. The **Blank** selection provides the cleanest looking display, but it makes it hard to distinguish blank lines from missing lines. Choose **Crosshatch** to display diagonal lines across the missing section. (Sorry, crosshatching does not work under Windows 3.1 or Windows NT.) Or, choose a solid **Color**.

Horizontal Lines Between Mismatched Sections

Select this option to delineate matched vs mismatched sections of text with a horizontal line. This helps to emphasize text differences, but if you typically have a lot of single line matches and mismatches it can make the display look cluttered. The horizontal lines will always appear when the Just Differences display option is selected.

Font

Click this button to select a font for the displayed text. Use a monospaced font, such as Courier, for columnar text or files with tabs.

Appearance Options (Main Window)

You can change the colors that are used to highlight differences in the directory comparison. If you are using Beyond Compare with a monochrome screen you should definitely change the colors so that mismatches show distinctly.

Matching Files

Select the color for files with matching directory entries.

Newer Files

Select the color for newer files. This color is also used when the dates match but file sizes don't.

Older Files

Select the color for older files.

Files Older Than Cutoff

Select the color for files that are older than the cutoff date.

Single Side (Orphaned) Files

Select the color for files that exist in one directory but not the other.

Color Spots

Color Spots are small rectangles that hold their color when a line is highlighted, allowing you to clearly read highlighted text without losing the color cues.

Font

Click this button to select a font for the directory lists.

Backup Files Before Copy

When selected, this option instructs Beyond Compare to rename the file in the target directory before copying over it. Backup files have a tilde (~) inserted in the extension. For example, the backup of BEYOND16.EXE is BEYOND16.~EX.

Button

Menu equivalent



File | Backup Files Before Copy

Collapse All

Close all subdirectories in the directory comparison.

Button

Menu equivalent



View | Collapse All

Command Line Parameters

You can run Beyond Compare with command line parameters to speed access to your favorite directories. You can specify:

- a session name
- a pair of directories, or
- a pair of files.

If you specify an existing session name, that session will be loaded when Beyond Compare starts. For example:

```
BEYOND32.EXE "My Application <-> Floppy"
```

You can specify two directories on the command line:

```
BEYOND32.EXE C:\ALPHA C:\BETA
```

Note: If you specify directories on the command line, the filename filter will be "*. *".

You can also specify two files on the command line and Beyond Compare will display them directly in the File Viewer.

```
BEYOND32.EXE APPLES.TXT ORANGES.TXT
```

Using Windows 3.x

You can create multiple icons in Program Manager - one for each session you use often. In Program Manager, select File | New and create a new Program Item. In the Program Item Properties dialog box, enter an appropriate Description, fill in the Command Line as described above, and enter the path to BEYOND16.EXE in Working Directory.

Windows95 Shortcuts

To place a shortcut to a specific session on your desktop, start up the Windows Explorer, then locate the Beyond Compare program and drag it to a blank area of the desktop. Then, right-click on the shortcut, select Properties from the popup menu, select the Shortcut tab and add edit the Target field to include the session name.

Notice that if the path to the Beyond Compare program contains spaces, there will be quotation marks around the path. Add the session name after the quotes. For example:

```
"C:\Program Files\Beyond Compare\beyond32.exe" "My Application <-> Floppy"
```

Or, specify a pair of directories:

```
"C:\Program Files\Beyond Compare\beyond32.exe" C:\ALPHA C:\BETA
```

Or, specify a pair of files:

```
"C:\Program Files\Beyond Compare\beyond32.exe" C:\ALPHA\A.TXT C:\BETA\B.TXT
```

If the directories or files that you specify contain spaces, be sure to enclose them in quotes:

```
"C:\My Application\A Long Filename.PAS"
```

Windows95 Command Prompt

Another option in Windows 95/NT4 is to run Beyond Compare from a DOS prompt, or from the Start | Run command. To save on typing, you might consider copying BEYOND32.EXE to your Windows directory, changing its name to something short like BC.EXE. Then, you could type simply:

```
BC C:\ALPHA C:\BETA
```

Or,

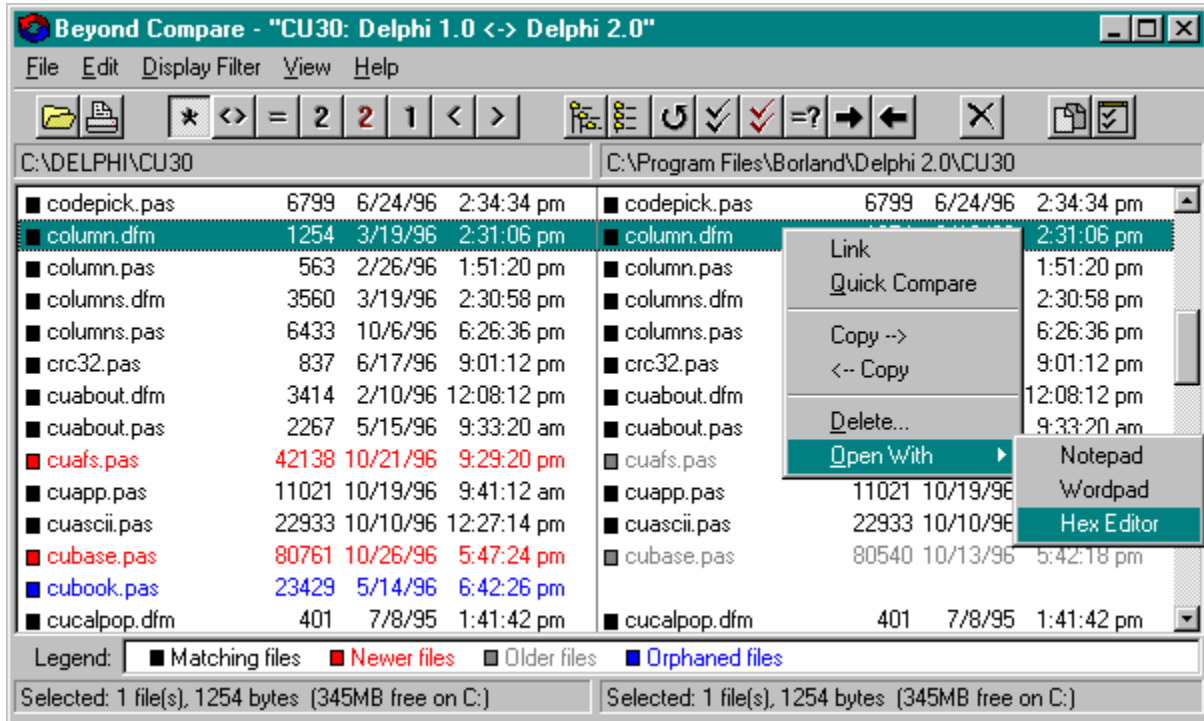
BC About.pas Save\About.pas

Comparing .DFM Files

Borland Delphi's .DFM files are binary files, but Beyond Compare converts them to text for viewing and editing. They are displayed side-by-side so you can identify form properties that have changed.

Comparing Directories

This is Beyond Compare's main window. You may have more or fewer buttons on the toolbar depending on your current toolbar configuration. Click on any area in the figure below for further explanation:



Colored text highlights changed files (based on file dates, sizes). The small rectangular color spots hold their color when a line is highlighted, allowing you to clearly read highlighted text without losing the color cues.

If you have long filenames that are chopped off, drag the edge of the window for a wider display or select a smaller font.

The display filters limit the view to various match conditions. Then you can select one or more lines in the list, and pick an operation to perform on them. Operations are selected from the menu, toolbar buttons, or popup menu.

Simply double-click a line to open the file viewer for a side-by-side comparison of text files. To compare files with different filenames (in the same or different directories), right-click on each filename, selecting Link from the pop-up menu.

See also:

[Comparing Subdirectories](#)

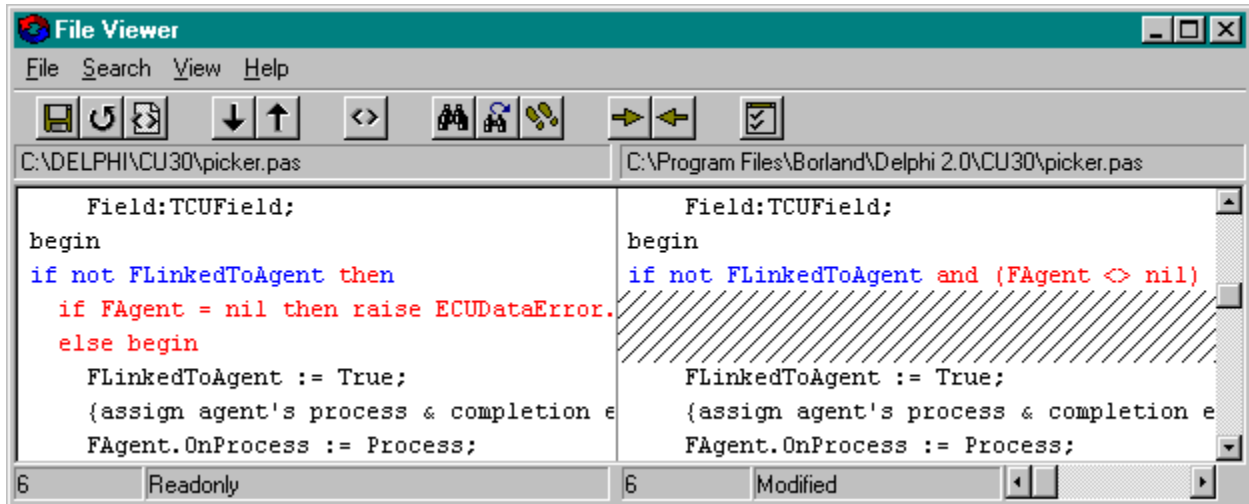
[Printing a Directory Comparison Report](#)

[Plugin File Viewers](#)

[Setting Program Options](#)

Comparing Files

This is the File Viewer window, highlighting the differences in text files side-by-side. Click on any area in the figure below for further explanation:



Both panes scroll together, either vertically or horizontally. In addition to using the scroll bars, you can scroll to the right by pressing Ctrl + Right Arrow or to the left with Ctrl + Left Arrow.

Use these features to peruse your files:

[Next, Previous Difference](#)

[Just Differences](#)

[Find Text](#)

[Go To Line](#)

You can produce a report of the differences between the files by selecting File | Differences Report. A dialog box appears, allowing you to send the report to your printer, a disk file, or the clipboard.

The File Viewer window is limited to comparing the first 32,500 lines of huge files. This limitation does not apply to the Quick Compare function, which compares entire files.

WARNING: You can view binary files if you like, but **do not try to edit or save them!** If you do, they will be truncated at the first occurrence of an end-of-file mark (Ctrl+Z), and may have CR/LFs inserted!

See also:

["Sync-it-yourself" Feature](#)

[Editing Files](#)

[Comparing .DFM Files.](#)

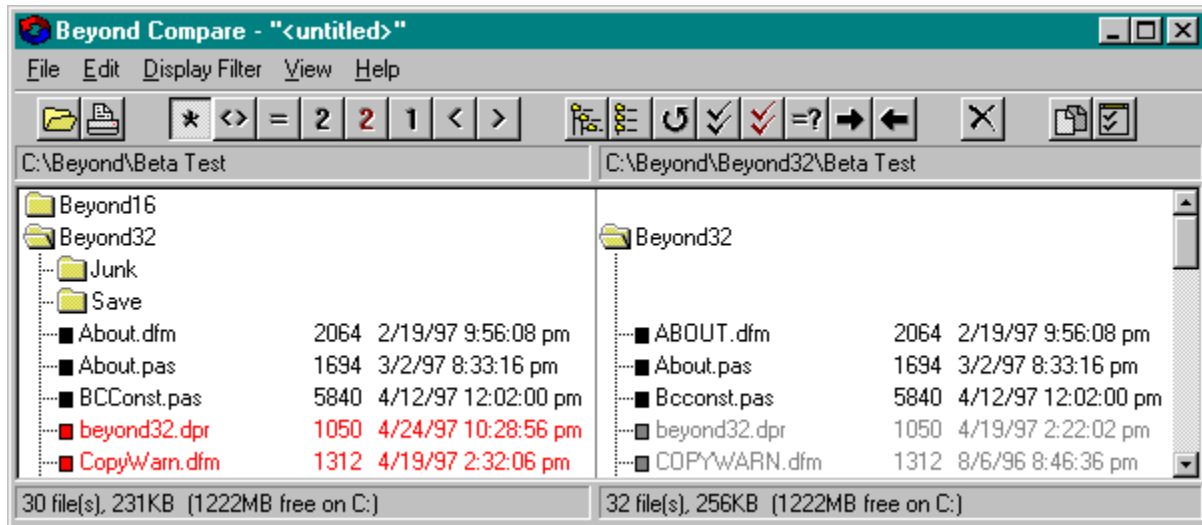
[Ignoring Leading, Trailing Columns](#)

[Setting Program Options](#)

Comparing Subdirectories

If the [Show Folders option](#) is selected, all subdirectories will appear with folder icons in the main window (no matter which [file filters](#) or [display filter](#) are specified).

You can double-click on the folders to "open" them and view their contents, or "close" them:

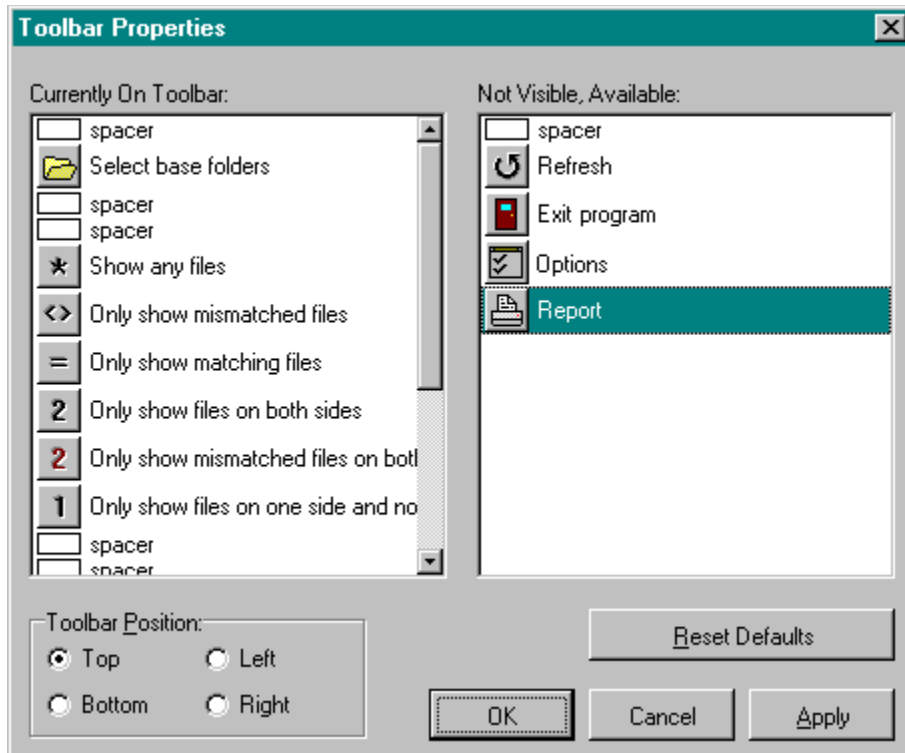


File operations such as copy and delete do not work on subdirectories. A folder needs to be "open" to perform operations on the files within it. However, the [Quick Compare](#) function does work on "closed" folders, comparing their contents and recursing through any nested subdirectories.

You can open all folders with the [Expand All](#) function, or close them all with [Collapse All](#). Additionally, you can right-click over a folder and select [Expand Subfolders](#) to open all folders within the selected folder.

Configuring the Toolbar

You can change the toolbar layout by right-clicking over it and selecting "Configure Toolbar" from the pop-up menu. In this dialog box, drag buttons to or from the "currently on toolbar" list. You can also rearrange the buttons by dragging them to different positions.





Beyond Compare

Beyond Compare is both a **directory compare utility** and a **file compare utility** wrapped in one. It was designed for use in managing programming projects, but it is useful for any time you need to compare the contents of directories.

[Overview](#)

[Comparing Directories](#)

[Comparing Files](#)

[Editing Files](#)

[Managing Sessions](#)

[Command Line Parameters](#)

[Error Codes](#)

[Setting Program Options](#)

[License, Ordering Info](#)


[How To Contact Us](#)

Copyright © 1996-97 Scooter Software
All rights reserved

Delphi is a Trademark of Borland International

Delete Files

This function deletes the selected files (after appropriate confirmation). Since two files are selected at a time, separate confirmation dialogs are displayed for each file, positioned adjacent to the filename. BE VERY CAREFUL with this function, particularly the "Yes to All" option.

| Button | Menu equivalent | Keyboard shortcut |
|---|-----------------|-------------------|
|  | File Delete | Del |

Differences Report

This feature produces a report of the differences between the files. A dialog box appears, allowing you to send the report to your printer, a disk file, or the clipboard.

Button

Menu equivalent



File | Differences Report

This header area identifies the directories being compared.

This optional status bar provides information about the files displayed above. You can disable by clearing the View | Statusbar option on the main menu.

Display Filters

In addition to file filters which limit comparison to types of files, you can filter the directory display based on how the directory entries match.

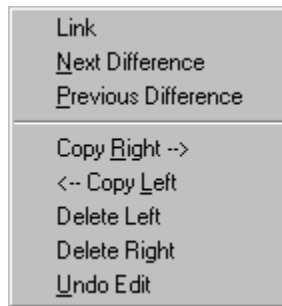
Show Any Files
Show Mismatched Files
Show Matching Files
Show Double Sides
Show Mismatched Double Sides
Show Single Sides
Show Older Files
Show Newer Files

The Older Than Cutoff feature can further limit the display of files..

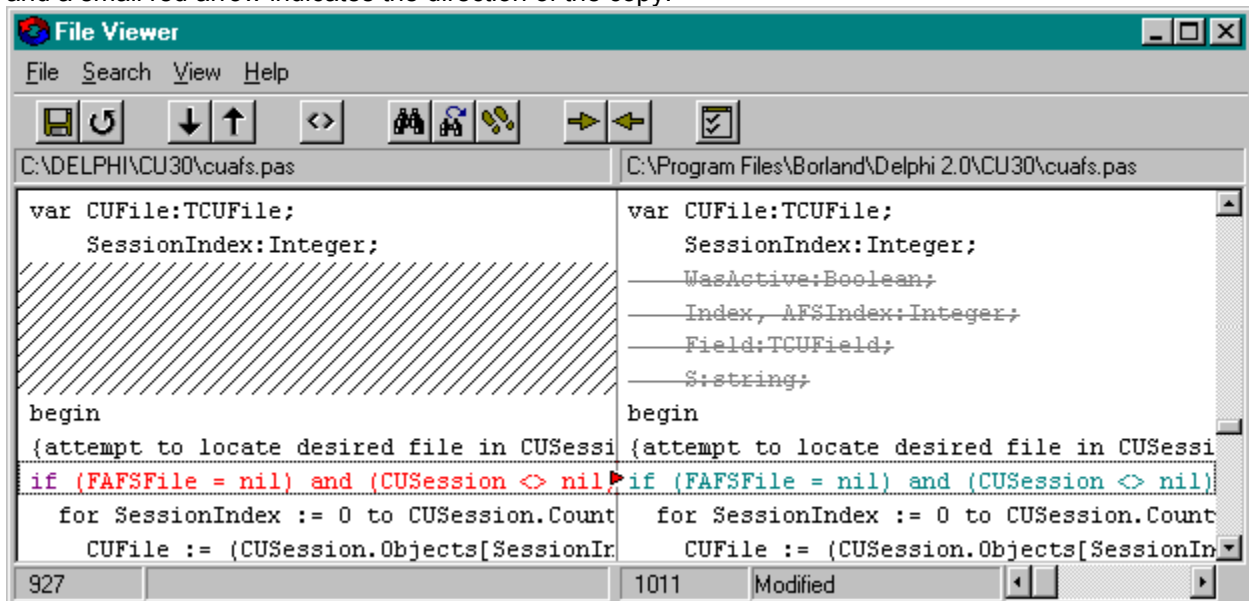
Editing Files

You can selectively reconcile differences between text files by copying or deleting lines.

In the Viewer window, select the lines you would like to edit, then right-click over the selection. (To select an entire section of mismatched text, double-click over it.) Pick a copy or delete operation from the popup menu:



Deleted text is changed to gray with a strike-through line. Copied text is colored teal in the target file, and a small red arrow indicates the direction of the copy:



The status bar shows a reminder that a file has been modified. You can cancel editing by selecting lines and picking Undo Edit from the popup menu. Or, you can select [Reload Files](#) to revert to the stored version of the files.

Select [Save](#) to save your modifications. If the File | Backup Before Save option is selected, Beyond Compare will keep a copy of the original file, adding a tilde "~" to the file extension.

Or, you can select [Save As](#) to save the modified file under a different filename.

Error Codes

If you get an error message in Beyond Compare, hopefully it will be self-explanatory. If not -- if you see a blunt message such as "I/O Error 3" or "Access Violation" -- it means we have failed to properly identify and handle a special condition. Please let us know when this happens so we can improve the program.

Access Violation at xxxxxxxx

This is a serious failure in the program. To make sense of the error address, we need to know the specific version of the program.

I/O Error Codes

These DOS error codes might help you understand or work around an error condition.

- 2 File not found
- 3 Path not found
- 4 Too many files open
- 5 Access denied
- 19 Disk write-protected
- 21 Drive not ready
- 23 Uncorrectable data error on disk
- 25 Seek error
- 28 Printer out of paper
- 29 Write fault
- 30 Read fault
- 31 General failure
- 32 Sharing violation
- 33 Lock violation
- 53 Network name not found
- 55 Device no longer exists on network
- 59 Unexpected network error

Expand All

Open all subdirectories in the directory comparison.

Button

Menu equivalent



View | Expand All

Copy Files

These buttons control the copying of selected files from the left directory to the right, or vice versa.

A dialog box prompts you to confirm the copy operation. If you attempt to copy an older file over a newer one a larger warning box appears.

If the Backup Files Before Copy option is selected, Beyond Compare will rename the file in the target directory before copying over it. It takes the original filename and inserts a tilde (~) in the extension. For example, BEYOND16.EXE would become BEYOND16.~EX.

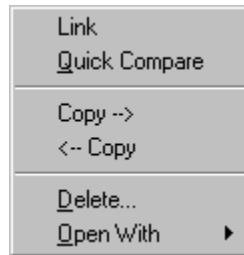
| Buttons | Menu equivalents | Keyboard shortcuts |
|---|-------------------|--------------------|
|  | File Copy Right | Ctrl+RightArrow |
|  | File Copy Left | Ctrl+LeftArrow |

This header area identifies the files being compared.

File Operations

To perform the various file-related operations, select one or more files in the main window, then either:

- pick File from the main menu and select the desired function,
- click the appropriate toolbar button, or
- right-click over the files to bring up a popup menu of functions:



Link Files

Quick Compare

Copy Files

Backup Files Before Copy

Delete

Open With

File Viewer Menu

File Search

Open With
Save
Save As
Backup Before Save
Differences Report
Close

Help

Help Topics
About

View

Next Difference
Previous Difference
Go To Line
Find
Find Again

Toolbar
Statusbar
Just Differences
Scroll Right
Scroll Left
Refresh
Options
File Viewer Options
Configure Toolbar

File Viewer Options

This command calls up the [options dialog](#) for the file viewer.

Button



Menu equivalent



View | Options | File Viewer Options

Find Text, Find Text Again

These buttons let you search for specific text in either file.

| Buttons | Menu equivalents | Keyboard shortcuts |
|---|---------------------|--------------------|
|  | Search Find | Ctrl+F |
|  | Search Find Again | F3 |

General Options (File Viewer)

Find Next Difference

This option lets you modify the style of the "Find Next Difference" and "Find Previous Difference" commands. The default setting is **Position Only**, which positions on the found difference without highlighting it. This is so you can readily see the color coding that identifies the difference. If you find that this makes it hard to notice the found line, you might try setting this option to **Normal Line Selection** instead.

Tab Stops

Set the number of columns per tab.

General Options (Main Window)

"Select Folder" Dialog on Startup

If this option is selected, the Select Folder dialog will automatically display on startup. If you usually select a session from the recent sessions portion of the File menu, you will find it faster to deselect this option.

Show Hidden/System Files

Select this option to display and compare all files - including those that have the "hidden" or "system" attribute set.

Show Folders

If this option is selected, you will see subdirectories in the directory compare window marked with a folder icon. You can double-click the folder to "open" it and compare its contents.

Consider Timestamps Within 2 Seconds Equal

This option is useful for comparing directories between computers with different file systems. For instance, the DOS FAT file system only stores file timestamps to the nearest 2 seconds, while NTFS and HPFS systems can represent timestamps to the nearest 100 nanoseconds. Copying across a network, between file systems, can result in files with slightly different timestamps. If this option is selected, those files would be treated as if they had the same times. Deselect the option for slightly better performance.

Disable "Older Than" Cutoff Feature

Select this option to turn off support for the "Older Than Cutoff" feature.

Confirm File Copy


If this option is selected, Beyond Compare will prompt for confirmation before copying files. Even if this option is *not* selected, the program will still warn if you are copying over a newer file.

Use Text-Based Quick Compare

This option modifies the behaviour of the Quick Compare function. Instead of a straight binary comparison, a text-based compare assumes the files are text files and compares them line-by-line. Differences in line termination are ignored, so you can compare a DOS style text file with a Unix style file. The comparison stops on an end-of-file mark (Ctrl-Z).

Go To Line

This feature lets you go to a specific line number. A dialog box will appear, allowing you to specify the line number and which side it applies to.

| Button | Menu equivalent | Keyboard shortcut |
|---|---------------------|-------------------|
|  | Search Go To Line | Ctrl+G |

How To Contact Us

Registered users are entitled to prompt e-mail support. We are also happy to support unregistered users while they are evaluating the software.

Please send any comments, suggestions or bug reports to:

Tim Thousand
t1000@scootersoftware.com

Our mailing address is:

Scooter Software
2828 Marshall Court, #208
Madison, WI 53705-2276
USA

For the latest version of Beyond Compare and for other news about the program, visit our web site at **<http://www.scootersoftware.com>**

If these addresses ever become obsolete, you should be able to find us by using the internet's Alta Vista service and searching for "Beyond Compare" or "Scooter Software".

Ignoring Leading, Trailing Columns

If your text files contain line numbers at the beginning or end of each line (such as COBOL source), you may want to ignore them for the purpose of comparing text. You can specify the first and/or last significant column in [Sync Algorithm Options](#).

The ignored columns are displayed in gray.

Just Differences

Select this option to display only the mismatched lines of text.

Button

Menu equivalent



View | Just Differences

This optional legend bar identifies the current color scheme. It can be enable or disabled by toggling View | Legend on the main menu.

License Agreement

You should carefully read the following terms and conditions before using Beyond Compare for Windows. Unless you have a different license agreement signed by Scooter Software, your use of this software indicates your acceptance of this license agreement and warranty. If you do not accept these terms you must cease using this software immediately.

Copyright

Beyond Compare for Windows ("the Software") is copyright © 1996-1997 by Scooter Software, all rights reserved.

Evaluation and Registration

This is not free software. You are hereby licensed to use the Software for evaluation purposes without charge for a period of 30 days. If you use the Software after the 30 day evaluation period a registration fee as described in the documentation is required. Unregistered use of the Software after the 30-day evaluation period is in violation of U.S. and international copyright laws.

One registered copy of the Software may either be used by a single person who uses the software personally on one or more workstations, or installed on a single workstation used by multiple people, but not both.

An organization may purchase a multi-user license amounting to either the number of individuals who have access to the Software on any number of workstations, or the number of workstations that will access the Software by any number of individuals.

Distribution

Provided that you do not include your Registration ID Number (stored in the .INI file) you are hereby licensed to make copies of the Software; give exact copies of the original to anyone; and distribute the Software in its unmodified form via electronic means. You are specifically prohibited from charging for any such copies.

Governing Law

This agreement shall be governed by the laws of the State of Wisconsin.

Disclaimer of Warranty

THIS SOFTWARE AND THE ACCOMPANYING FILES ARE SOLD "AS IS" AND WITHOUT WARRANTIES AS TO PERFORMANCE OF MERCHANTABILITY OR ANY OTHER WARRANTIES WHETHER EXPRESSED OR IMPLIED. NO WARRANTY OF FITNESS FOR A PARTICULAR PURPOSE IS OFFERED. ANY LIABILITY OF THE SELLER WILL BE LIMITED EXCLUSIVELY TO REFUND OF PURCHASE PRICE.

License, Ordering Info

The Beyond Compare program is distributed electronically, available from a variety of on-line locations. In today's "connected" world, this is the fastest method of distribution and the easiest way to provide you with program updates. As such, there are no diskettes or printed manual (although the program has this extensive help file).

We will honor the prices mentioned here through February, 1998. For current pricing information and the latest version of the program, visit our [web site](#).

Step 1 - Evaluate the Program

You can use the program free for 30 days to see if it suits your needs. If you use it beyond 30 days you are obliged to pay the license fee. Please read the [License Agreement](#) for details. If you do not register the program, it will stop functioning 45 days after it was first run. If you need more time for evaluation, please e-mail us for an extension.

Step 2 - Register

You "register" the program by paying the license fee. Once we receive your registration we send you a registration ID (by e-mail) that you enter into the program.

The single user license fee for the full program is US\$30. You can double the number of licensed users within an organization for each additional \$20. See our [pricing table](#).

[Registering by mail](#)

[Registering on-line through CompuServe](#)

[Registering on-line through the Internet](#)

[Registering by phone or by fax](#)

Whatever method you use to register, we will need your name, organization (if any) and e-mail address in order to provide your registration ID. We will never use your e-mail address for [other purposes](#). (If you cannot provide an e-mail address, be sure to include your mailing address so we can mail your registration ID.)

Step 3 - Unlock the Program

Once we receive your registration, we will e-mail you back with your registration ID, usually within 12 hours. If you register on-line or by phone and do not hear from us within 24 hours, please send us a message.

When you receive your registration ID, choose Register from the "Thank you for trying Beyond Compare" screen (or, select Help | Register from the main menu). Enter the registration data exactly as shown, since the registration ID is keyed to this information.

The registration ID disables the "nag" screen, removes the 45 day timeout, and unlocks certain features of the program. Registered users may also have access to bonus plugins from a special "members only" web page.

Your registration ID will work with both BEYOND16 and BEYOND32, as well as all subsequent minor version updates (eg. 1.6, 1.7).

Link Files

This function lets you compare two files with different names. Right-click over the first file and select Link from the popup menu. Then do the same for the second file. The files can be in the same directory or different directories.

Main Window Menu

File

- Open
- Open With
- Link
- Quick Compare
- Copy Right ->
- <- Copy Left
- Delete
- Backup Files Before Copy
- Options
- Folders
- Toolbar
- Print
- Options
- Exit
- recent sessions

Edit

- Select All
- Select Newer

Display Filter

- Show Any Files
- Show Mismatched Files
- Show Matching Files
- Show Double Sides
- Show Mismatched Double Sides
- Show Single Sides
- Show Left Side Older Files
- Show Left Side Newer Files
-
- Set Cutoff

View

- Toolbar
- Statusbar
- Legend
- Expand All
- Collapse All
- Refresh
- Options
- Main Window
-
- Configure
-
- File Viewer

Help

- Help Topics
- Register
- About

Main Window Options

This command opens the options dialog for the main window. Use it to customize the appearance and functionality of directory comparisons.

Button

Menu equivalent



View | Options | Main Window Options

Managing Sessions

A unique feature of Beyond Compare is its use of named "sessions" to remember where your different projects are located and what types of files you want to synchronize. Sessions are stored in the BEYOND32.INI (or BEYOND16.INI) file located in your Windows directory.

For example, the "My Application <-> Floppy" session could identify C:\DELPHI\MYAPP as the left-hand directory; A:\ as the right-hand directory; and *.pas, *.dfm, *.dpr, *.bmp as the file filters. You can leave out other files such as *.dcu, *.dsm and *.dsk which you probably *don't* want to copy to a different Delphi installation.

Alternatively, you can include all files (*.*) and then specify files to skip. Use a hyphen in front of a file filter to *exclude* that class of files. For instance, the filter -*.~?? will suppress the display of the "backup" files that Beyond Compare creates. Exclusion filters should come after filters that include the files that you want to exclude. Clear?

The <untitled> session refers to the last time you used Beyond Compare without using or saving a named session.

Creating a New Session

In the Select Base Folders dialog, once you've specified the directories and filters, click "Save As" and enter a descriptive name.

Returning to a Session

Select File from the menu and pick from the 9 most recently used sessions, or pick any session from the drop-down list in the Select Directories dialog.

If you typically pick a session from the File menu you may want to disable the Select Folder Dialog on Startup option. See [General Options](#).

Speed Tip: You can create an icon to run Beyond Compare with a particular session name [on the command line](#).

Modifying a Session

To change an existing session, select it from the drop-down "Session" list in the Select Base Folders dialog, make the desired changes to the drives, directories or filters, and click "Save As".

To delete a session, select it and click "Remove".

Matching directory entries are shown in black by default.

Lines that are identical are displayed in black by default.

Mismatched lines are displayed in color. One color is used for "similar" text and another is used for different text.



"Similar" text is defined as differing only in leading or trailing whitespace, or upper vs lower case. Lines are scanned from their ends towards the middle until different (non-similar) text is found.

This section represents missing text - perhaps lines that were deleted from this file or lines that were inserted in the opposite file. Missing text can be indicated in different ways. See [File Viewer Appearance](#).

Files with newer date stamps are shown in red by default. Also, files with matching date stamps but differing sizes are shown in red in both directories.

Next Difference, Previous Difference

These buttons jump to the next or previous section of mismatched text.

| Buttons | Menu equivalents | Keyboard shortcuts |
|---|------------------------------|--------------------|
|  | Search Next Difference | Ctrl+N |
|  | Search Previous Difference | Ctrl+P |

Older files are shown in gray by default.

Older Than Cutoff

This feature allows you to ignore files older than a specified cutoff date. From the main menu select [Display Filter | Set Cutoff](#) and enter a date, or a date and time. If you have the [legend bar](#) enabled, the cutoff date/time will appear on it as a reminder. You can easily set the cutoff date to match a file or directory date by right-clicking over the appropriate entry and selecting [Acquire Cutoff](#) from the popup menu.

Files will not appear in the directory comparison unless at least one of the pair is newer than the cutoff. Therefore, if files (matched or mismatched) are both older than the cutoff, they do not appear. If a file is on one side but not the other (orphaned) and is older than the cutoff, it will not appear. These rules are followed regardless of the [Display Filter](#) selection in effect.

Files older than the cutoff will only appear if there is a newer (than cutoff) version in the other directory. The older file will appear in a different color, which you can pick in the [Appearance Options](#).

The oldest cutoff date you can specify is January 1, 1980. You can disable the "older than cutoff" feature entirely in [General Options](#).

Open With

The Open With feature allows you to open files with other applications, such as your favorite text editor. Right-click over a file in the Main Window, select Open With and the appropriate application, and that application will be run on the file selected. Although both side-by-side files may be highlighted, Beyond Compare is sensitive to which one was clicked over.

You can also right-click over a file in the File Viewer window and select Open With from the popup menu. And, if your editor supports it, you can have the editor jump to the same line as selected in the File Viewer (see Replaceable Parameters below).

The Open With feature is only available in the registered program.

Setup "Open With" Options

From the Main Window menu, select View | Options, and then select the Open With tab. In the memo field, enter the applications you would like access to in the following format:

```
Notepad=notepad.exe
Wordpad=write.exe
Hex Editor=C:\Program Files\HexEdit\HexEdit.exe
```

You do not need to specify the folder if the program is in the Windows folder. Note that the WordPad program file is called write.exe.

Replaceable Parameters

By default, Beyond Compare simply adds the current filename at the end of the line before carrying out the operation. For more control, you can use %f to represent the filename and %l (lower case "L") to represent the current line number.

For example, suppose you are comparing two versions of the file "mouse.txt" and you wish to use your "Cat" editor to edit the left file. You are positioned on line 75 in the left file.

| "Open With" definition | Resultant operation |
|-----------------------------------|--------------------------------------|
| Cat=c:\util\cat.exe | c:\util\cat.exe mouse.txt |
| Cat=c:\util\cat.exe %f/L=%l | c:\util\cat.exe mouse.txt/L=75 |
| Cat=c:\util\cat.exe "%f" -#%l -s3 | c:\util\cat.exe "mouse.txt" -#75 -s3 |

Consult your editor's documentation for the proper command line syntax. You may find putting quotes around the filename parameter useful when dealing with long filenames.

You can configure Beyond Compare to open files with your favorite utilities.
(registered program only)



Beyond Compare Order Form

1.5

From: _____ Date: _____

Please indicate how you would like your registration information to display (in the Beyond Compare "about" box). For multi-user licenses we prefer to include a reference to the user count, such as: "ACME Corporation - 8 users".

User Name: _____
Organization: _____

Specify an e-mail address for us to use to send your registration ID # and for program update notices:

email: _____

| Qty | Description | Unit Price | Total |
|------|-------------------------------------|------------|-------|
| ____ | Beyond Compare for Windows | \$30 | _____ |
| ____ | License Doubler* | \$20 | _____ |
| ____ | Other _____ | _____ | _____ |
| | 5.5% tax (Wisconsin residents only) | | _____ |
| | | Total | _____ |

* Each "License Doubler" doubles the number of registered users. For example, 1 Beyond Compare license + 3 License Doublers = 8 users = \$90.

Make check (US funds only) payable to Scooter Software and mail it with this form to:

Scooter Software
2828 Marshall Court, #208
Madison, WI 53705-2276

For other payment options, visit our web site at www.scootersoftware.com or contact Tim Thousand at t1000@scootersoftware.com

Overview

Have you ever struggled with synchronizing source files between directories? Hard disk and floppy? Keeping track of changes you made at home verses at work?

There are many tools that will blindly synchronize directories based on modification date, but sometimes it's the older file that you need to keep. Or just two lines of code in the older file that you need. Also, have you noticed that Delphi sometimes modifies .DPR and .DFM files without changing their date stamps at all?

We have projects where we share source with outside programmers, and we tinker with certain components at home. We needed a tool that speeds the distribution of source files, but also lets us carefully analyze changes to code. So we wrote this one...

Directory Compare Features:

- Side-by-side comparison of two directories sorted by filename
- Multiple filename/extension filters
- Saves your favorite project "sessions" for fast repositioning
- Color highlighting of newer files, mismatched files
- Copy, delete functions
- Fast binary compare of files - are they really the same?
- Side-by-side comparison of two directory trees
- Recursive binary comparison of directory trees

File Compare Features:

- Side by side comparison of two text files
- Color highlighting of mismatched, inserted lines
- Copy lines of text from one file to the other - delete lines
- "Sync-it-yourself" manual synchronization override
- Displays Delphi .DFM files as text - identifying changes to forms
- Handles very long lines

Plugins

Plugins are add-on products that enhance and extend Beyond Compare's functionality. Typically they offer the ability to display non-text files side-by-side. For instance, we intend to offer a hex viewer plugin that displays binary files side-by-side in hexadecimal notation.

We also have a Plugin Toolkit product that helps Delphi programmers produce custom plugins for Beyond Compare.

Support for plugins is only available when the program is registered. See our web site for a list of available plugins.

Installing Plugins

A plugin is provided as a .DLL file which should be copied to the same directory as the Beyond Compare program.

After copying the plugin file, start Beyond Compare and from the main window menu, select View | Options.

Under the Plugins tab, click the "Install New Plugin" button and enter the name of the plugin (the filename without the extension).

Next, specify the file extensions you would like the plugin to process. If more than one, separate with spaces. An asterisk (*) refers to "all extensions". When viewing files, Beyond Compare will search down the Installed Plugins list and use the first one that matches the file extension being processed. You can change the order in this list by dragging the plugin names to different positions.

The built-in file viewer appears as "<default>". You can't remove it but you can change which file extensions it handles, and you can change its order in the list.

Right-click over a line in order to manually override the text synchronization.

Standard Pricing Table

| <u>Number of Users</u> | <u>Total Amount</u> |
|------------------------|---------------------|
| 1 | \$30 |
| 2 | \$50 |
| 4 | \$70 |
| 8 | \$90 |
| 16 | \$110 |
| 32 | \$130 |
| 64 | \$150 |
| 128 | \$170 |
| 256 | \$190 |
| 512 | \$210 |
| etc. | |

Printing a Directory Comparison Report

To get a printed report of the current directory comparison you can either:

- select File | Print from the main menu, or
- click the Report button on the toolbar (you can [add this button](#) if it's not already there)

The report that is produced mimics the layout of the main window. The [display filter](#) buttons control both the main window and the report contents.

Quick Compare

This function does a binary comparison of the selected files. The files can be of any type. A message informs you whether all files match or which files don't.

Button


Menu equivalent



File | Quick Compare

Refresh

Click this button to refresh the directory display. This will reflect any changes made by other applications or other network users.

| Button | Menu equivalent | Keyboard shortcut |
|---|-----------------|-------------------|
|  | View Refresh | F5 |

Registering Through CompuServe

If you have access to CompuServe, you can conveniently register Beyond Compare through their Shareware Registration service (SWREG). GO SWREG and follow the instructions, searching for ID #13019. The \$30 fee will be added to your CompuServe bill.

If you would like to register a multi-user license through CompuServe, please note that their "quantity" field will refer to the number of \$30 increments rather than the number of registered users. The table below reflects our standard pricing table adapted for even multiples of \$30.

| Number of Users | Total Amount | SWREG "Quantity" |
|------------------------|---------------------|-------------------------|
| 1 | \$30 | 1 |
| 3 | \$60 | 2 |
| 8 | \$90 | 3 |
| 24 | \$120 | 4 |
| 64 | \$150 | 5 |
| 192 | \$180 | 6 |
| 512 | \$210 | 7 |

If you would like us to respond to an e-mail address other than your CompuServe address, you can include it with the mailing address information that you fill out in SWREG.

Registering Through the Internet

To register on-line through the Internet using a major credit card, visit RegNet, the Registration Network, at www.swregnet.com and look for Beyond Compare under one of these Index numbers:

| Number of Users | Total Amount | RegNet Index # |
|------------------------|---------------------|-----------------------|
| 1 | \$30 | #811 |
| 2 | \$50 | #1023 |
| 4 | \$70 | #1024 |
| 8 | \$90 | #1025 |
| 16 | \$110 | #1310 |

Please note that RegNet cannot answer technical questions about Beyond Compare. Contact Scooter Software for support.

Registering by Mail

You can register Beyond Compare by mail by [printing this order form](#) and sending it with a check drawn on a US bank to:

Scooter Software
2828 Marshall Court, #208
Madison, WI 53705-2276
USA

Registering by Phone

You can register Beyond Compare by phone or by fax through RegNet, the Registration Network. Their numbers are:

1-800-999-2734 toll free within the US

1-805-288-1827 accessible outside of US

1-805-288-1867 fax orders


Specify one of these Index numbers:

| Number of Users | Total Amount | RegNet Index # |
|------------------------|---------------------|-----------------------|
| 1 | \$30 | #811 |
| 2 | \$50 | #1023 |
| 4 | \$70 | #1024 |
| 8 | \$90 | #1025 |
| 16 | \$110 | #1310 |

Please note that RegNet cannot answer technical questions about Beyond Compare. Contact Scooter Software for support.

Reload Files

This feature reloads both files. Use it to display any changes made to the files (by other applications) since the File Viewer was invoked. You will lose any "sync-it-yourself" alignments or editing modifications you may have made.

| Button | Menu equivalent | Keyboard shortcut |
|---|-----------------|-------------------|
|  | View Refresh | F5 |

Report

This feature produces a report that mimics the current directory comparison.

| Button | Menu equivalent |
|--------|-----------------|
|--------|-----------------|



File | Print

Save As


Select this command to save modifications under a new file name. If both files were modified, you will get a separate Save As dialog for each file.

| Button | Menu equivalent |
|--------|-----------------|
|--------|-----------------|

| | |
|--------|----------------|
| (none) | File Save As |
|--------|----------------|


Save Changes

Select this command to save modifications to either or both files. You will get a separate confirmation dialog for each file.

| Button | Menu equivalent | Keyboard shortcut |
|---|-----------------|-------------------|
|  | File Save | Ctrl+S |


Scroll Right, Scroll Left

These buttons scroll the file display to the right or left. Both panes of the viewer scroll in tandem.

| Buttons | Menu equivalents | Keyboard shortcuts |
|---|---------------------|--------------------|
|  | View Scroll Right | Ctrl+RightArrow |
|  | View Scroll Left | Ctrl+LeftArrow |

Select All

Click this button to select all the displayed files.

| Button | Menu equivalent | Keyboard shortcut |
|---|-------------------|-------------------|
|  | Edit Select All | Ctrl+A |

Select Base Folders

To open the Select Base Folders dialog, you can either:

- select File | Folders from the main menu, or
- click the Select Base Folders tool button

Speed Tip: You can bypass this dialog by selecting a recently used session from the File menu.

Session

This drop-down combo box allows you to either select an existing session, or to enter a new session name. Click the Save button to save the current settings under this name. Click Remove to delete this session. See also Managing Sessions.

Drives and Directories

Use the drive and directory controls to select the "left" and "right" folders for comparison. The order isn't important - either can be used as source or target in file operations.

Filters

Specify the types of files you want to compare in this free-format memo field. Enter one file specification per line.

Use a hyphen in front of a file specification to *exclude* that class of files. For instance, the filter -*.~?? will suppress the display of the "backup" files that Beyond Compare creates. The filters are applied in order, so exclusion filters should come after other filters.

Select Base Folders

This command opens the [Select Folders dialog](#). Use it to set or change the base directories to compare, or the file filters to use.

| Button | Menu equivalent |
|---|-----------------|
|  | File Folders |



Select Newer

Click this button to select the files in the left pane that are newer than those in the right pane. Click it again to select newer files in the right pane.

Button

Menu equivalent



Edit | Select Newer

Selected files are highlighted in the normal manner. You can click and drag to select several adjacent lines, or you can hold the Ctrl key down while you click specific lines.

Select one or more lines before picking an operation to perform on them.

Setting Program Options

There are several ways that you can customize the behavior of the program. Beyond Compare's optional features are split between those relating to the Main Window (directory comparison) and the File Viewer window.

The resultant configuration is stored in the BEYOND32.INI (or BEYOND16.INI) file in your Windows directory.

If you are upgrading from BEYOND16 to BEYOND32 and would like to keep your sessions and other settings, you can copy BEYOND16.INI to BEYOND32.INI.

Main Window Options

Select View | Options from the menu in the Main Window to set these options:

[General Options](#)

[Appearance Options](#)

[Plugins](#)

[Open With](#)

File Viewer Options

Select View | Options from the File Viewer menu to set these options:

[General Options](#)

[Appearance Options](#)

[Sync Algorithm Options](#)

Toolbar Options

You can display or hide either window's toolbar by selecting or deselecting the Toolbar option in either window's View menu. To add, remove or rearrange the buttons on the toolbar, right-click over the toolbar and select [Configure Toolbar](#).

Legend

You can display or hide the legend at the bottom of the main window by changing the View | Legend option in the main menu.

Statusbar

You can display or hide the status bar at the bottom of each window by selecting or deselecting the Statusbar option in the View menu.

Show Any

Display any file in the directories (as long as it conforms to the current filters)

Button

Menu equivalent



Display Filter | Show Any Matches

Show Double Sides Only

Display files that are on both sides of the directory comparison.

Button

Menu equivalent

2

Display Filter | Show Double Sides

Show Matches Only

Display files with matching directory entries. *Note that their contents are not necessarily identical.*

Button

Menu equivalent



Display Filter | Show Matching Files

Show Mismatched Double Sides Only

Display files that are on both sides of the directory comparison and have mismatched directory entries.

Button

Menu equivalent

2

Display Filter | Show Mismatched Double Sides

Show Mismatches Only

Display only those files whose directory entries differ. *Note that their contents are not necessarily different.*

Button

Menu equivalent



Display Filter | Show Mismatched Files

Show Newer

Display files that are both directories but are newer in the left directory.

Button

Menu equivalent



Display Filter | Show Left Side Newer Files

Show Older

Display files that are both directories but are older in the left directory.

Button

Menu equivalent



Display Filter | Show Left Side Older Files

Show Single Sides Only

Display files that are on one side of the directory comparison but not the other. Useful for isolating missing or obsolete files.

Button

Menu equivalent



Display Filter | Show Single Sides

"Single Side" or "orphaned" files are in one directory but not the other. They are shown in blue by default.

The optional Status Bar displays line numbers, file status (readonly or modified), and a scroll bar that scrolls left and right views simultaneously. You can disable it by clearing the View | Statusbar option on the main menu.

Sync Algorithm Options

Minimum Lines in Match

This represents the minimum number of lines that need to match before Beyond Compare will synchronize text. Enter a number between 1 and 50 (the default is 5). A larger value helps prevent syncing on trivial matches, such as blank lines, or "begin" and "end" statements in Pascal. A "Hot Match" (see below) overrides this rule.

Skew Tolerance

Skew tolerance is the number of lines Beyond Compare will search forward or backward in a file, looking for a matching sequence. You can normally keep this value rather high (the default is 9999) when working with small to moderately large text files. However, comparing huge files with long sections of mismatched text can be quite slow. Use a smaller number for higher performance, especially if large insertions or deletions of text are not likely.

Enable "Hot Match" Feature

The Hot Match feature gives synchronization preference to important lines. Currently, only certain Pascal keywords are recognized: "procedure", "function", "constructor" and "destructor". Lines that match and contain one of these words override the "minimum lines in match" rule.

Treat "Similar" Text as Exact Match

Leading and trailing whitespace is defined as any spaces or tabs found at the beginning or end of lines. Similar text differs only in leading or trailing whitespace, or upper- lower-case mismatches.

If this option is not selected, lines with differences only in whitespace and character case are considered "similar". They will be synchronized, but they appear in the Similar Text color and they count as mismatches for the Display Just Differences, Find Next Difference and Find Previous Difference operations.

If this option is selected, differences in leading/trailing whitespace and character case are ignored altogether.

Starting Column for Compare

Enter the first significant column for text comparison. This is useful if your text files contain line numbers (such as COBOL source) and you don't want them to affect the text comparison. The columns are displayed in gray to remind you that they are being ignored.

Ending Column for Compare

Enter the last significant column for text comparison. Beyond Compare will ignore any text to the right of this column for comparison purposes. The ignored text is colored gray. Leave this field zero to disable the feature.

Reset Defaults

Click this button to revert sync settings back to default values.

You can customize your toolbar, adding or removing buttons as you like. Right-click anywhere over the toolbar to access the [toolbar configuration](#). Disable the toolbar altogether by clearing the View | Toolbar option.

We will only use your e-mail address to send your registration ID and, unless you request otherwise, notifications of program updates.

