

Contents

ChemLab Simulations

Getting Started with ChemLab

The Organization of ChemLab

Lab Equipment

Beaker

Buchner funnel

Bunsen burner

Buret

Calorimeter

Erlenmeyer Flask

Evaporation Dish

Florence flask

Graduated cylinder

Stirring rod

Test tube

Thermometer

Watch glass

Weighing Scale

ChemLab Procedures

Using the mouse

Right mouse button

Double clicking mouse

Selecting 2 or more objects

Positioning lab equipment

Pouring/decanting

Heating

Adding chemicals

Adding water

Adding Indicators

Adding a label

Saving files

Printing a file

Setting options

Warnings

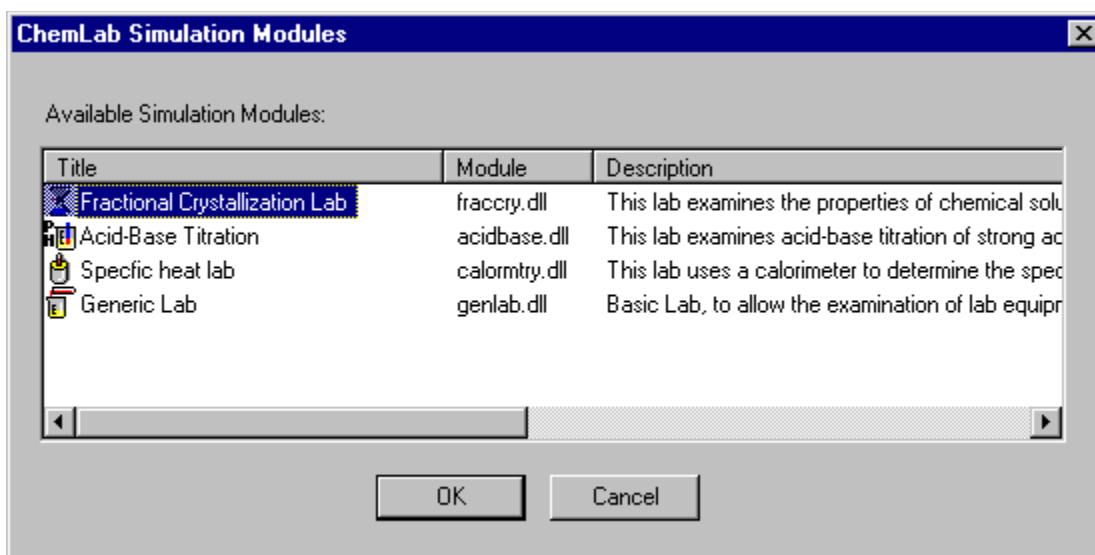
Feedback

ChemLab Simulations

ChemLab for windows is an interactive simulation of a chemistry lab. Common Lab equipment and procedures are used to simulate the steps involved in performing a chemistry lab experiment. Each lab simulation is contained in a separate simulation module, thus many different labs are possible using the common lab interface.

A lab simulation module contains code and resources, such as chemical list, indicator list, available menu options and instructions specific to each lab. New lab modules can be added to ChemLab by copying them to the program directory. These lab modules are in fact extensions to the main ChemLab program which presents a common interface into which a lab module can hook into.

Selecting a Lab Simulation:



A lab module is selected at start-up and when a new file is created or by selecting the lab option. The lab simulation dialog box present a list of available labs and a short description of the lab. To select a lab, click on the title of the lab you wish to perform and press OK. Clicking cancel will still load the generic lab simulation.

When an existing file is opened it automatically loads the appropriate lab module. If that lab is not available a generic lab module is loaded which allows the viewing of the file.

Getting Started

When ChemLab is started or a new file is created the simulation dialog box will open. From this dialog box pick a simulation module to load. This will load the text window with the instructions necessary to perform the lab. Read the lab introduction in the introduction text window. The introduction will explain the basic science behind the lab. After reading the lab introduction read the procedure. To select the procedure click the procedure tab above the text window. In the procedure you will find the basic steps to complete the lab, you should first read the procedure completely before attempting the lab. If you are not sure how to perform a certain action check the lab manual or help for directions. Then perform the lab following the steps in the procedure. While performing the procedure you can record your observations in the observation text window, these will be saved in the ChemLab file.

The organization of ChemLab

ChemLab consists of two windows, a text and Lab window, divided by a splitter bar. The Lab window displays the animated lab simulation. Objects in the form of lab equipment are added to this window. These objects can be added and acted upon by using the Chem toolbar or the main menu commands.

The text window serves as the center for textual documentation in ChemLab. It is divided into 3 windows; A read-only introduction and lab procedures, and a user writeable observation window. These windows are selected by pressing the text tab bar, located just above the text window.

The observation window allows the user to perform paragraph and character level formatting. These formatting options can be selected using either the text Toolbar, located just above the text window, or by using the text edit menu commands found in the edit main menu.

ChemLab - (untitled) - Acid-Base Titration

File Edit Equipment Chemicals Procedures Arrange Options Help

Marlett 12 B I U

Introduction Procedure Observations

Acid-Base Titration Introduction:

Water dissociates (ionizes) into H^+ (hydrogen ion) and OH^- (hydroxide ion) naturally to a very small extent:

$$H_2O \rightarrow H^+ + OH^-$$

In a neutral solution the concentration of $[H^+]$ and $[OH^-]$ are equal at 1.0×10^{-7} M. An acidic solution is one in which the concentration of $[H^+] > [OH^-]$, and in a basic solution the $[H^+] < [OH^-]$. pH is a measure of the concentration of $[H^+]$ and is defined as:

$$pH = -\log[H^+]$$

In a neutral solution $pH = 7$. A $pH < 7$ signifies an acidic solution and $pH > 7$ signifies a basic solution.

An acid-base reaction is one in which protons are transferred from an acid to a base:

$$HA + B \rightarrow A^- + B^+$$

where HA is an acid and B is a base

In this experiment we will explore the use of titration, adding

Titration - ii

Stopcock

Close

Volume: 24.9 ml

Start Vol > 50.0 ml

End Vol > 24.9 ml

Cancel Help

100 ml 75 25

pH: 10.60

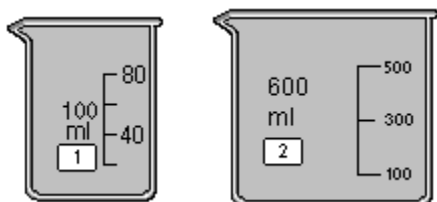
Labels: Main Menu, Text Tab Bar, Main Chem Tool Bar, Text Tool Bar, Text Window, Lab Window, Status Bar

Lab Equipment

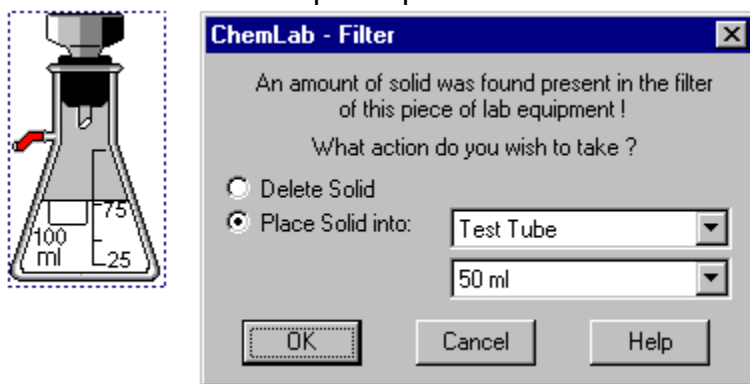
Lab equipment is added to the Lab window by either selecting from the chem toolbar, equipment menu, right mouse context popup menu, or additionally lab equipment can also be added through the chemicals dialog box by specifying a new lab container.

ChemLab provides the following pieces of lab equipment:

Beaker; a wide mouth, thin walled container with a projected lip used widely in laboratory chemistry. ChemLab provides a 100ml, 250ml and 600ml beaker. They can be added to the lab window by pressing the toolbar beaker button (100ml), selecting the 100, 250 or 600ml menu items from the equipment menu or right-mouse-clicking on the lab window and selecting the beaker menu item from the popup context menu.

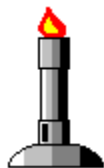


Buchner funnel; a funnel with a flat circular base perforated with small holes used for filtering with suction. In ChemLab a buchner funnel is added by first selecting an **Erlenmeyer flask** and then picking the buchner funnel from the chem toolbar, equipment menu or right-mouse-button context menu. To remove the funnel, do the same. If any solid is present in the filter a dialog box will appear asking whether you wish to discard or keep and place it another container.

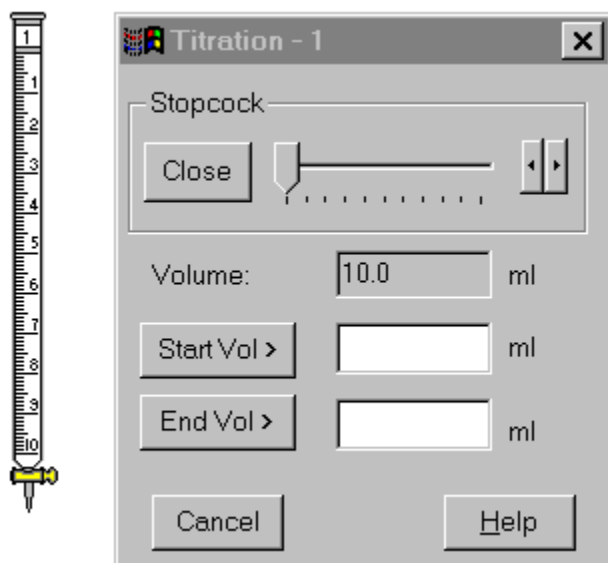


Bunsen burner; a gas burner used in laboratories. Consists of a metal tube with a valve for controlling the air-fuel mixture. In ChemLab the bunsen burner is added by selecting the bunsen burner button from the tool bar, equipment menu or right-mouse-button context popup menu. If a container is selected when the bunsen burner button or menu item is selected a burner will be added just below the selected container. Lab equipment containers, which allow heating, that are placed directly above a bunsen burner, will

receive a fixed amount of heating from the burner. The amount of heat transfer by a bunsen burner can be varied by changing the burner heat in the equipment options dialog box.



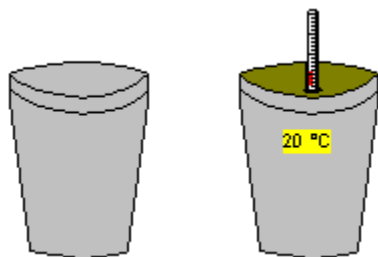
Buret; a graduated glass tube with a stopcock valve used for transferring precisely measured liquid volumes. Used in volumetric analysis in laboratory chemistry. In ChemLab a 10ml and 50ml buret are provided. They can be added to the lab window by pressing the toolbar buret button, selecting the buret from the equipment menu or right-mouse-clicking on the lab window and selecting the buret menu item from the popup context menu.



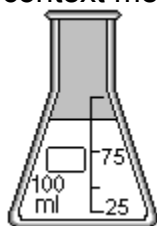
A titration dialog box is opened when a new buret is added. The titration dialog box is used to control the rate of flow leaving the buret. A slider control in the dialog box labeled stopcock is used for this purpose. If an existing buret is selected when the buret button or menu is pressed no new buret will be added, rather the titration dialog box will then refer to the previously selected buret. To identify which buret the titration dialog box refers to; the buret's label value is added to the dialog box's title bar. Note, only one titration dialog box can be opened at a time. The titration dialog box also updates the current volume of the buret to the nearest tenth of a ml and can be used to record the start and end-points of a titration.

Calorimeter; is an instrument for determining the amount of heat evolved, transferred or absorbed. In ChemLab it consists of a closed insulated vessel with a thermometer. To add a calorimeter to ChemLab select the calorimeter menu option in the Equipment main menu or use right-mouse-context button. The calorimeter has a volume of 250ml

and will be open when first added. To close a calorimeter, select it and press the thermometer tool bar button. This will add both a thermometer and a cork top to calorimeter. Doing this a second time will remove the thermometer and open the calorimeter. Note: the calorimeter will only be available for those experiments in which it is used. So the menu option will often appear grayed out.



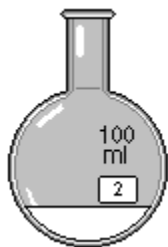
Erlenmeyer Flask; a flat base conical flask with a narrow neck. ChemLab provides a 100ml Erlenmeyer flask. They can be added to the lab window by pressing the toolbar Erlenmeyer flask button, selecting Erlenmeyer flask from the equipment menu or right click on the lab window and selecting the Erlenmeyer flask menu item from the popup context menu.



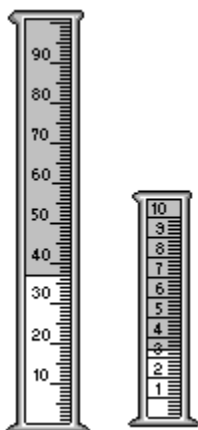
Evaporation Dish; is short wide mouth container with thick walls. ChemLab provides an evaporation dish with a volume of 100ml. They can be added to the lab window by pressing the toolbar evaporation dish button, selecting the evaporation dish from the equipment menu or right-mouse-clicking on the lab window and selecting the evaporation dish menu item from the popup context menu.



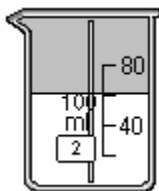
Florence flask; is a round container with a long neck and narrow mouth. ChemLab provides a florence flasks with a volume of 100ml. They can be added to the lab window by pressing the toolbar florence flask button, selecting the Florence flask from the equipment menu or right-mouse-clicking on the lab window and selecting the Florence flask menu item from the popup context menu.



Graduated cylinder; is a tall cylindrical container with a finely marked scale, used for precisely measuring out liquid volumes. In ChemLab a 10ml and 50ml graduated cylinder are provided. They can be added to the lab window by pressing the toolbar graduated cylinder button (100ml), selecting the graduated cylinder from the equipment menu or right-mouse-clicking on the lab window and selecting the graduated cylinder menu item from the popup context menu.



Stirring Rod; is a glass rod used for mixing. ChemLab allows the addition of a stirring rod for mixing to selected lab containers with some contents. The stirring rod may be added to a single selected item by pressing the stirring rod button on the toolbar, selecting stirring rod from the equipment menu or from the popup context menu. A user can also remove an existing stirring rod from a container by this same process. The stirring rod will remain in a container for only a few seconds; to continue stirring the user must re-select the stirring rod.



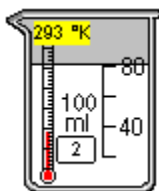
Test Tube; a plain or lipped thin glass tube closed at one end. ChemLab provides a test tube with a volume of 50ml. They can be added to the lab window by pressing the toolbar test tube button, selecting the test tube from the equipment menu or right-mouse-clicking on the lab window and selecting the test tube menu item from the popup

context menu.



Thermometer: is an instrument for measuring temperature. It consists of a closed narrow graduated tube with a bulb at one end. The tube contains a liquid, such as mercury, whose volume varies with temperature. Temperature is indicated by the height of the mercury column within the thermometer.

ChemLab allows the addition of a thermometer to selected lab containers. The thermometer may be added to a single selected item by pressing the thermometer button on the toolbar, selecting thermometer from the equipment menu or from the popup context menu. A user can also remove an existing thermometer from a container by this same process. The recorded temperature is indicated by the height of the liquid in the tube and additionally by a text field at the top of the thermometer. The scale can be changed from Kelvin, Celsius or Fahrenheit by selecting the temperature scale setting in the equipment option dialog box.



Watch glass: is a short circular glass container, used for measuring out solids and other miscellaneous tasks in the lab. ChemLab provides a watch glass with a volume of 50ml. They can be added to the lab window by pressing the toolbar watch glass button, selecting the watch glass from the equipment menu or right-mouse-clicking on the lab window and selecting the watch glass menu item from the popup context menu.



Weighing scale: are instruments used for weighing mass. ChemLab does not provide weighing scales but instead will show the sample weight in grams (that is the weight of only the contents of a container) of a selected container in a highlighted text field below the container. The sample weight may be added to a single selected item by pressing the scales button on the toolbar, selecting scales from the equipment menu or from the popup context menu. A user can also remove an existing sample weight from a container by this same process.



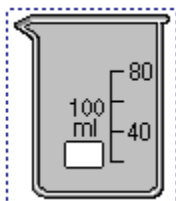
Sample Weight: 21.000 grams

ChemLab Procedures

Using the mouse:

ChemLab uses the mouse to select lab equipment for a number of actions:

Picking a single piece of lab equipment, either by single left mouse click or dragging (holding down the left mouse button while moving the mouse). Selecting a piece of lab equipment allows adding chemicals, water, thermometer, scale, stirring rod, bunsen burner, a funnel to a flask and decanting or pouring.

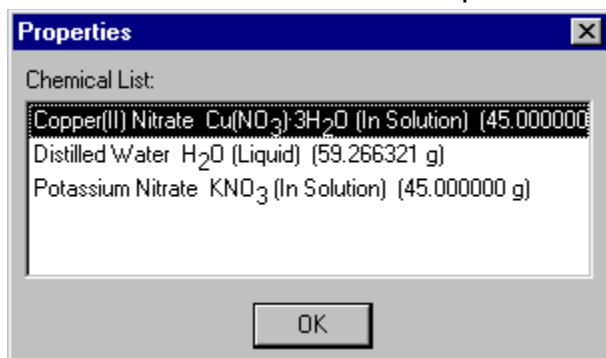


Right mouse button:

Pressing the right mouse key will open a context menu. If the right mouse is clicked over a lab object a menu listing actions that can be performed upon that object will appear. If clicked over the Lab window; a menu will appear that list possible lab additions that can be made to the Lab window.

Double clicking mouse:

Double clicking the left mouse button on a piece of lab equipment will open the chemicals property dialog box. The chemicals property dialog box shows the current chemicals and their states in a piece of lab equipment.



Double clicking on a label on a piece of lab equipment also allows editing of its label.

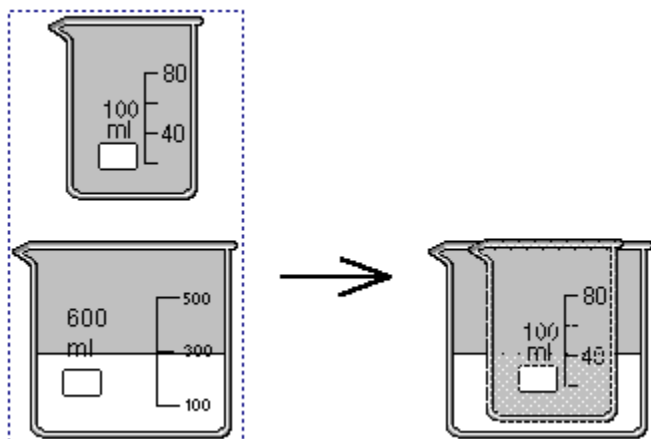
Selecting 2 or more objects:

To select two or more lab objects, drag the mouse around the objects while holding down the left mouse key, then release the mouse key. A selection rectangle will then

enclose the selected objects.

Combining and Removing Lab equipment

Selecting 2 pieces of lab equipment, which fit into each other, allows combining of lab equipment (arrange menu). Combining places one piece of lab equipment into another, this can be used to arrange a cooling or hot water bath. To remove two previously combined pieces of lab equipment select the combined object and select the remove menu option from the arrange menu or pop-up context menu.



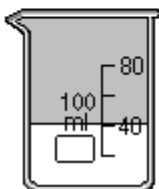
Selecting 2 or more objects also allows grouping of objects together.

Positioning Lab Equipment:

ChemLab tries to create the feel of a lab by using the position of certain lab equipment relative to other lab equipment. This is seen in decanting, or pouring, titration and heating with the bunsen burner.

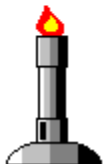
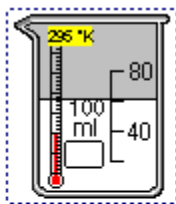
Pouring/decanting:

Pouring or decanting, involves selecting a piece of lab equipment, positioning its left side (center in the case of the watch glass and evaporation dish) over the receiving container and selecting the decant button from the chem toolbar or decant/pour menu item from the procedures menu or from the right-mouse-button context menu. Note: liquid is first transferred in this process, to allow separation.



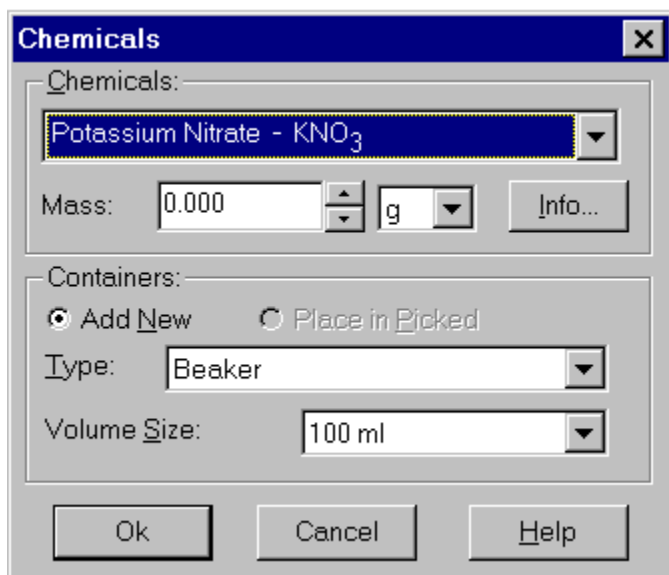
Heating:

Similarly to heat an object with a bunsen burner, position the burner under that object.



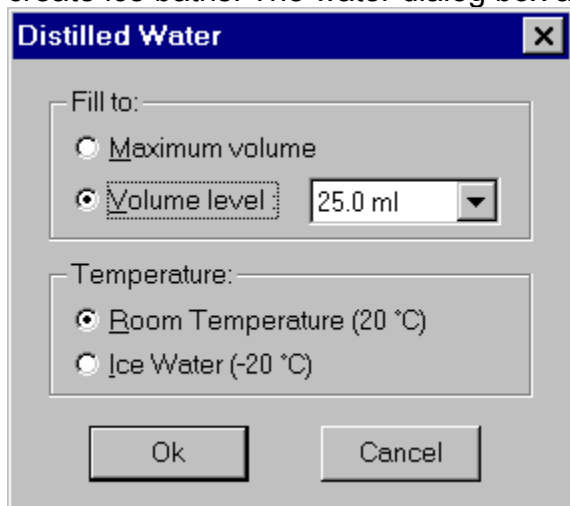
Adding Chemicals:

To add chemicals to a container, first select the container and then select the chemicals button from the toolbar or chemicals menu item from either the main menu or the right-mouse-button context menu. This will open up a chemicals dialog box. The chemicals dialog box allows the user to add chemicals to the selected item or add chemicals to a new item. It will also allow the user to change the selected containers size and type. Select the desired chemical from the chemicals drop-down combo box. Enter the desired mass or volume of chemical needed and press OK.



Adding Water:

Water is added to a selected lab item by using either the toolbar water button or the water dialog box. To open the water dialog box, select the water menu item in the chemicals menu or the water menu item with the right-mouse-button context menu. Water may also be added through the Chemicals dialog box. The toolbar button will only add water at room temperature to a selected item to the next graduation on the container. The water dialog box also allows the user to add ice water, which is used to create ice baths. The water dialog box also only adds water in increments.

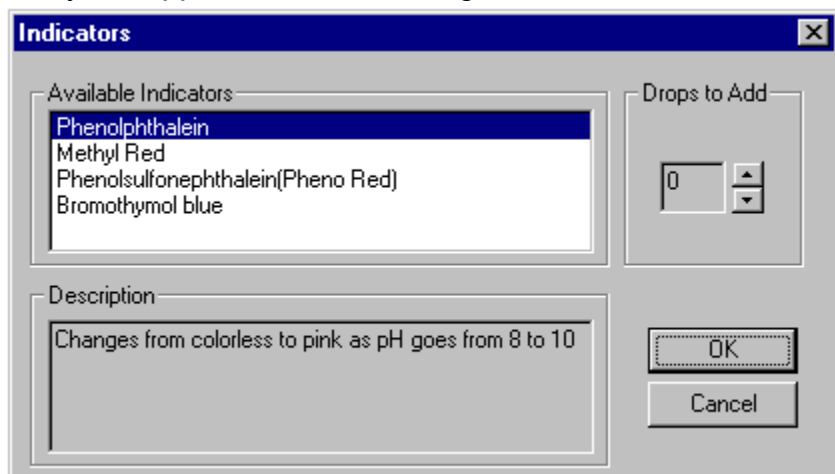


Adding Indicators

Indicators are substances that signify the completion of a chemical reaction with a color change. To add an indicator to a piece of lab equipment, select it and then press the

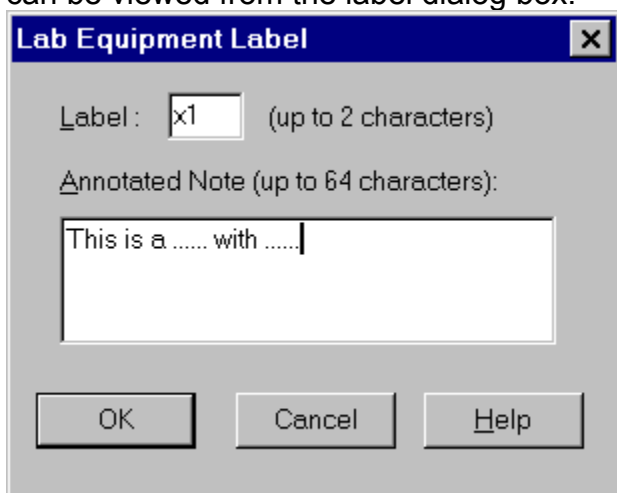
indicator menu option in the Chemical main menu or the right-mouse-button context menu. This will open a dialog box which list available indicators and their color change characteristics. Not all labs use indicators so this menu will often appeared grayed.

For those labs that do use indicators, select the desired indicator from the list of available indicators and enter the number of drops to add (from 0-10) and press OK. Indicators are generally ignored by ChemLab except to flag a Chemical reaction, so they will appear to have no weight or volume.



Adding a Label:

ChemLab allows a user to add a label to a lab container, along with a short annotated note. By selecting a lab container lab and then selecting the label menu item in the procedures menu or right-mouse-button context menu or by double clicking on the container's label area. This will open up the label dialog box, which allows the user to enter a 2 letter label, which is visible on the container and a short annotated note, which can be viewed from the label dialog box.



Saving files:

Lab experiments may be saved to file for latter use (file format *.lab). To save a file, a user can select the toolbar file button, or file's menu save or save as menu selections.

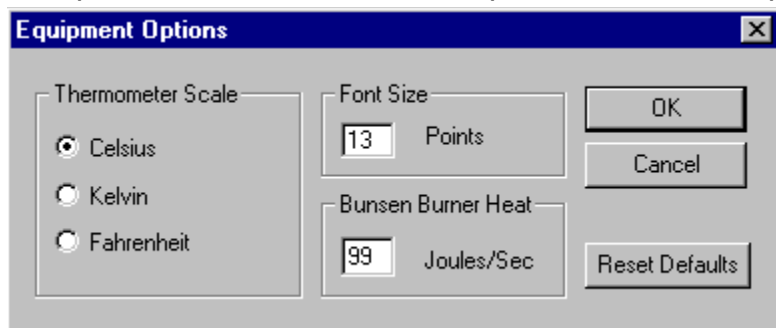
Printing Files:

ChemLab files may be printed by selecting the print toolbar button or by selecting the print menu in the file main menu. Printing will print both the observations and the lab objects from the lab window.

Setting options

ChemLab allows the setting of a number of options including: equipment options, current lab module, and window settings. These options are available under the options main menu.

Equipment options are set in the Equipment option dialog box. These options include the settings for the heat transferred by the bunsen burner, the size of the text font used in main lab window graphics; such as the equipment label, and the setting for the temperature scale used. These options once set are preserved until changed again.



Window option settings including whether both the main lab window and the text window are visible or only the lab window. This option can be set by selecting the toolbar button or the "Both lab & text" and "Lab Only" main menu options.

Warnings

Lab instructions included with ChemLab have been modified and simplified for purposes specific to ChemLab. They are not suitable for use in an actual lab setting and should not be used as a substitute to actual Lab documentation and instructions.

Feedback

Please send us your comments on this software, bugs, other problems, suggested improvements, and experiments you think could work in this format.

Our e-mail address is : josephc@hookup.net

Also check out the Model Science Web page for new developments, down-loadable software and product information at:

www.hookup.net/~josephc

