

**Cancel**

Press this button to abandon the current operation and return to the previous menu.

**Close**

Press this button to close the current dialog box.

## **Close Window Button**

Press this button to close this window.

## Contents



System Snapshot is based upon [LANutil32](#) technology from [Vector Networks](#).

**Exit**

Click here to exit the LANutil32 Console application and return to Windows.

## **Inventory Categories**

Click on the tabs to view the Inventory information.


Right-click on a tab and select another category from the drop-down list, or use the sideways scroll buttons to see the remaining tabs.

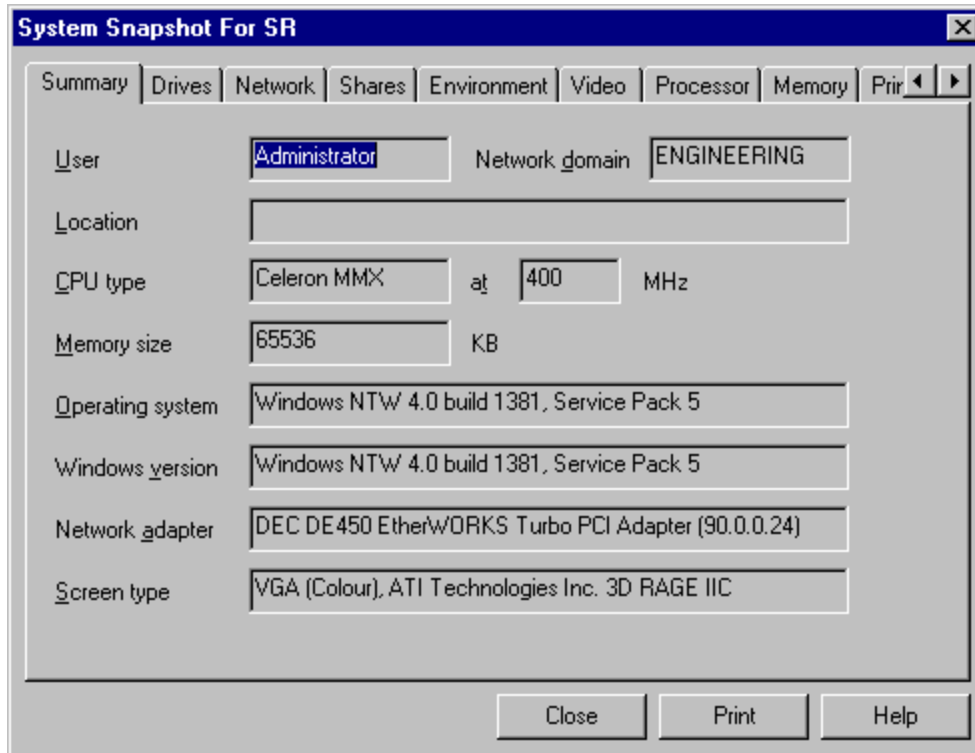
## **System Snapshot**

This tabbed dialog shows the Hardware Inventory information for the target node.

## System Snapshot Results

Highlight a Client in the Control List View and select the System Snapshot command from the Tools Menu to perform a System Snapshot. This displays the Hardware Inventory for the selected Client.

For further information on a particular feature, click where a  appears on the picture below.



This tabbed dialog allows you to display the various inventory categories by clicking on the tabs. Additional tabs are available by pressing the scroll buttons or by right-clicking on the tabs themselves and choosing the desired tab from the popup menu.

You can print a standard report by pressing the Print button. The Print button also allows you to save the report in a text file.



## **Help**

Press this button to display this help topic.

LANutil, LANutil32, LANutil32 Suite,  
LANutil32 Inventory, and the LANutil32,  
and Vector logos, are trademarks of  
Vector Networks Limited.

**Print**

Press this button to print the results.

# The System Snapshot Team

System Snapshot was created by:-

## Engineering:

Tim Mason, David Briggs

## Documentation:

Nick Hurst

## **Maximise Button**

Click here with the mouse to expand this window so that it fills up the display.

## **Minimise Button**

Click here with the mouse to reduce this window to an icon at the bottom of the display.

## Vector Networks



Contact details:-

Vector Networks Limited  
4 Mercury Park,  
Amber Close,  
Tamworth,  
Staffordshire,  
B77 4RP,  
U.K.

Telephone: +44 1827 67333  
Fax: +44 1827 67068

Internet: [sales@vector-networks.co.uk](mailto:sales@vector-networks.co.uk)  
WWW: <http://www.vector-networks.com/>

**Client Name**

The name of the selected Client is shown here.



# Standard Printed Report

A typical System Snapshot printed report contains the following information :-

Hardware Inventory Report for Node SR

Hardware Inventory Summary :

User : Administrator  
Windows Version : Windows NTW 4.0 build 1381, Service Pack 5  
Windows Directory : C:\WINNT40  
NT serial number : 50036335064111166911  
Processor Type : Celeron MMX, at 400 MHz  
Total Memory : 65536 KB  
Network Node : SR Domain : ENGINEERING  
Network Adapter : DEC DE450 EtherWORKS Turbo PCI Adapter (90.0.0.24)  
Screen Type : VGA (Colour), ATI Technologies Inc. 3D RAGE IIC  
Screen Resolution : 1152 x 864 x 65536 colors (Refresh 85 Hertz)

User Information :

Registered Organisation : Scott Redfern  
Registered Owner : Vector Networks Limited

No user information

Processor Information :

Processor Type : Celeron MMX, at 400 MHz  
Processor Make : GenuineIntel  
Co-Processor Make : Internal

Screen Information :

Screen Type : VGA (Colour), ATI Technologies Inc. 3D RAGE IIC  
Screen Resolution : 1152 x 864 x 65536 colors (Refresh 85 Hertz)

Initial video mode 0, current video mode 3  
Video DAC : ATI Internal DAC  
Video memory : 8192KB

Network Protocol(s) :

Primary Address : 90.0.0.24  
IPX Address : 00000000:0000F8320AEA  
IP Address : 90.0.0.24  
Subnet Mask : 255.0.0.0  
Default Gateway :  
DNS Server(s) : 90.0.0.101  
DHCP Server(s) :  
WINS Server(s) : 90.0.0.101  
NBT Broadcast Mask :  
NBT Name Scope :  
Network OEM : Unknown

Session Layers :

NetBIOS, 254.00	00 00 F8 32 0A EA
NetBIOS, 000.00	00 00 F8 32 0A EA
NetBIOS, 254.00	00 00 F8 32 0A EA
NetBIOS, 254.00	00 00 00 00 00 00

Node Name :  
SR

Total of 4 network protocol stacks installed

Network Adapter(s) :

Card 0 : DEC DE450 EtherWORKS Turbo PCI Adapter (90.0.0.24)  
Card 1 : Windows NT Remote Access WAN Wrapper (90.0.0.24)  
Card 2 : Windows NT Remote Access AsyMac Adapter Driver (90.0.0.24)  
Card 3 : Windows NT Remote Access WAN Wrapper (90.0.0.24)  
Card 4 : Windows NT Remote Access WAN Wrapper (90.0.0.24)

Printer Information :

LPT1: : EPSON Stylus COLOR 600  
Driver : EPSON Stylus COLOR 600  
Settings : Portrait Simplex  
LPT1: : EPSON Stylus COLOR 400  
Driver : EPSON Stylus COLOR 400  
Settings : Portrait Simplex

Default Printer : Ne00: \\VECSRV\Digital LN17ps, Driver : winspool

Network Redirections :

Disk Redirections :  
U: redirected to \\VECSRV\PCUSER  
Y: redirected to \\VECSRV\PCCOMMON

Printer Redirections :  
None

Network Shares Information :

ADMIN\$ : C:\WINNT40 (Remote Admin)  
C : C:\  
C\$ : C:\ (Default share)  
CDROM : G:\  
D : D:\  
D\$ : D:\ (Default share)  
Download : D:\GETRIGHT\DOWNLOADS  
E : E:\  
E\$ : E:\ (Default share)  
F : F:\  
F\$ : F:\ (Default share)  
LANUTIL\$ : C:\LANUTIL (LANutil Administrative Share)  
Offline : E:\OFFLINE  
Support : E:\SUPPORT

Windows Server : Enabled; File Sharing : Yes; Printer Sharing : Yes

Miscellaneous Information :

Windows Version : Windows NTW 4.0 build 1381, Service Pack 5  
Windows Directory : C:\WINNT40  
Keyboard Type : Enhanced 101 or 102 key US and Non US keyboards  
Keyboard Driver : keyboard.drv  
Modem : USRobotics Winmodem with x2  
On Port : COM3  
Country Code : 1, Code Page : 437, Default Code Page : 437  
Standard Time Zone : GMT Standard Time  
SMS Client : Not Installed

System Environment Variables :

System Environment variable list contains 11 entries :

ComSpec = %SystemRoot%\system32\cmd.exe  
NUMBER\_OF\_PROCESSORS = 1  
OS = Windows\_NT  
Os2LibPath = %SystemRoot%\system32\os2\dll;  
PCSA =  
PROCESSOR\_ARCHITECTURE = x86  
PROCESSOR\_IDENTIFIER = x86 Family 6 Model 6 Stepping 0, GenuineIntel  
PROCESSOR\_LEVEL = 6  
PROCESSOR\_REVISION = 0600  
Path = %SystemRoot%\system32;%SystemRoot%;;D:\MICROS~1\Office;C:\WIN32APP\TOOLKIT;  
windir = %SystemRoot%

User Environment variable list contains 2 entries :

TEMP = %SystemDrive%\TEMP  
TMP = %SystemDrive%\TEMP

DOS Information :

DOS OEM : Windows NTW, Version 4.0

DOS file system settings :

File Control Blocks : 4 [FCBS]  
Open Files Limit : 20 [FILES]  
File Buffers : 0 [BUFFERS]

System Programs :

The following system programs/components are in use :

SHARE File sharing/locking capabilities  
SETVER Report required DOS version to applications  
KEYB Configure keyboard for specific language  
MSCDEX Driver interface for accessing CD-ROMs  
DPMI DOS Protected Mode Interface  
HIMEM Use extended memory manager to allocate UMBS  
DOSINHMA DOS is using the high memory area

System Memory :

Type	Size KB	Free KB	Size Bytes	Free Bytes
Real mode	640	555	655360	568336
Extended	19456	0	19922944	0
Expanded	4096	4080	4194304	4177920
Total memory	65536		67108864	

Largest executable program size 567472 bytes

EMS memory manager version 4.0

Mouse :

Windows mouse driver : Microsoft, or IBM PS/2 (mouse.driv)

System Startup Files :

AUTOEXEC.BAT 04-Jun-1999 14:52:02 File size : 330 bytes  
CONFIG.SYS 04-Jun-1999 10:47:28 File size : 100 bytes

```

WIN.INI          16-Jun-1999  15:10:16   File size : 1016 bytes
SYSTEM.INI      14-Oct-1996  01:38:00   File size : 219 bytes
AUTOEXEC.NT    03-Jun-1999  09:45:04   File size : 579 bytes
CONFIG.NT      29-Apr-1999  15:27:54   File size : 2510 bytes

```

Multimedia Information :

MultiMedia MCI Drivers :

```

AVIVideo, Video for Windows
CDAudio, CD Audio
MPEGVideo, DirectShow
Sequencer, MIDI Sequencer
WaveAudio, Sound

```

MultiMedia Devices :

```

MIDI Input, YAMAHA DS-XG MPU401 IN
MIDI Output, YAMAHA DS-XG MPU401 OUT
MIDI Output, YAMAHA DS-XG Synthesizer
Mixer, DS-XG Mixer
Wave Input, DS-XG Wave Recording
Wave Output, DS-XG Wave Playback

```

Disk Drives :

Floppy disk A : 1.44MB Floppy disk B : None

System booted from drive : 'C'  
Last drive : 'G', 9 logical disk drives available

Drive status key : L = Local, S = Share, A = Ass?, P = App?, B = Subst, J = Joi?

Drv	Label	Media	Size MB	Free MB	Format	Serial#	Status	Byte Per Sector	Sec Per Cluster
A		Removable	0	0			L.....	0	0
C		Fixed	2015	824	FAT	265B-15E6	L.....	512	64
D		Fixed	1999	1324	FAT	3F5F-15E9	L.....	512	64
E		Fixed	1999	971	FAT	E4D5-BC23	L.....	512	64
F		Fixed	2039	1369	FAT	0CDD-02CC	L.....	512	64
G	-	CD-ROM	0	0	-	-	.....	0	0

Installed ROMs :

Index	Seg	Size	ROM Identification
0	C000	32 KB	Video
1	E000	16 KB	Sys Exp
2	E400	48 KB	
3	F000	64 KB	System

Total of 4 ROMs installed

BIOS Information :

```

System BIOS Version : PhoenixBIOS 4.0 Release 6.0
System BIOS Date    : 11/16/98
Video BIOS Date     : 98/05/10

```

CD-ROM :

MSCDEX CD-ROM driver version 2.21 installed

Memory Map :

Index	Addr	Size	Owner	Type
0	0210	20544	0008	System
1	0714	2608	COMMAND	Program
2	07B7	128	0000	Free
3	07BF	704	0715	Environment
4	07EB	720	0819	Environment
5	0818	5808	NTFSDB	Program
6	0983	720	1575	Environment
7	09B0	16	0000	Free
8	09B1	480	MSCDEXNT	Program
9	09CF	2688	REDIR	Program
10	0A77	38736	DOSX	Program
11	13EC	160	0A78	Environment
12	13F6	6112	KB16	Program
13	1574	139232	LUHDWCHK	Program
14	3772	32784	1575	Environment
15	3F73	560	1575	Environment
16	3F96	2064	1575	Environment
17	4017	392832	0000	Free

Serial Port(s) :

Port	I/O Address	Type
COM1	3F8	16450

Printer Port(s) :

Port	I/O Address
LPT1	3BC
LPT2	378

Bus Information :

Bus Name	Address	Type
SCSI Maxtor 90845D4 GAS5	Port 0, Bus 0, Target Id 0, LUN 0	DiskPeripheral
SCSI NEC CD-ROM DRIVE:28C3.02	Port 1, Bus 0, Target Id 0, LUN 0	CdRomPeripheral

Service Information :

Service	State
Alerter	Stopped
COM+ Event System	Stopped
Client32	Running
ClipBook Server	Stopped
Computer Browser	Running
DHCP Client	Stopped
Directory Replicator	Stopped
Dr Solomon's WinGuard for Windows NT	Running
Dr. Solomon's Scheduler	Running
EventLog	Running
LANutil32 Distribution Agent	Stopped
LANutil32 Scheduler	Running
Messenger	Running
NT LM Security Support Provider	Stopped
Net Logon	Stopped

Network DDE	Stopped
Network DDE DSDM	Stopped
Network Monitor Agent	Stopped
Plug and Play	Running
Protected Storage	Running
Remote Access Autodial Manager	Running
Remote Access Connection Manager	Running
Remote Access Server	Stopped
Remote Procedure Call (RPC) Locator	Stopped
Remote Procedure Call (RPC) Service	Running
Server	Running
Spooler	Running
System Event Notification	Stopped
TCP/IP NetBIOS Helper	Running
Task Scheduler	Running
Telephony Service	Running
UPS	Stopped
Windows installer	Stopped
Workstation	Running

Device driver	State
-----	-----
AFD Networking Support Environment	Running
Abiosdsk	Stopped
Ahal54x	Stopped
Ahal74x	Stopped
Always	Stopped
Arrow	Stopped
Atdisk	Stopped
Beep	Running
BusLogic	Stopped
Busmouse	Stopped
Cdaudio	Stopped
Cdfs	Running
Cdrom	Running
Changer	Stopped
Cpqarray	Stopped
DEC DC21X4 Adapter Driver	Running
Dell_DGX	Stopped
Dell_dsa	Stopped
Disk	Running
Diskperf	Stopped
DptScsi	Stopped
Fastfat	Running
Fd16_700	Stopped
Fd7000ex	Stopped
Fd8xx	Stopped
Floppy	Running
Ftdisk	Stopped
Inport	Stopped
Jazzg300	Stopped
Jazzg364	Stopped
Jzvxl484	Stopped
KSecDD	Running
Keyboard Class Driver	Running
Logitech Keyboard Class Filter Driver	Running
Logitech Keyboard and PS/2 Mouse Port Driver	Running
Logitech Mouse Class Filter Driver	Running
Logitech Serial Mouse Driver	Stopped
Microsoft NDIS System Driver	Running
Microsoft NDIS TAPI driver	Running
Modem	Stopped
Mouse Class Driver	Running

Msfs	Running
Mup	Running
NWLink IPX/SPX Compatible Transport Protocol	Running
NWLink NetBIOS	Running
NWLink SPX/SPXII Protocol	Running
Ncr53c9x	Stopped
Ncrc700	Stopped
Ncrc710	Stopped
NetBEUI Protocol	Running
NetBIOS Interface	Running
NetDetect	Stopped
Network Monitor Agent Driver	Stopped
Npfs	Running
Ntfs	Stopped
Null	Running
Oliscsi	Stopped
PCIDump	Stopped
PCISys	Running
ParVdm	Running
Parallel	Running
Parport	Running
Pcmcia	Stopped
PnP ISA Enabler Driver	Stopped
Q110wnt	Stopped
Rdr	Running
Remote Access ARP Service	Running
Remote Access Auto Connection Driver	Running
Remote Access Mac	Running
Remote Access WAN Wrapper	Running
Scsiprnt	Stopped
Scsiscan	Stopped
Serial	Running
Sermouse	Stopped
Sfloppy	Stopped
Simbad	Stopped
Sparrow	Stopped
Spock	Stopped
Srv	Running
T128	Stopped
T13B	Stopped
TCP/IP Service	Running
Ultra124	Stopped
Ultra14f	Stopped
Ultra24f	Stopped
VgaSave	Running
VgaStart	Stopped
WINS Client(TCP/IP)	Running
Wd33c93	Stopped
Windows Socket 2.0 Non-IFS Service Provider Support Environment	Stopped
Winmodem	Running
Xga	Stopped
aic78xx	Stopped
ami0nt	Stopped
amsint	Stopped
atapi	Running
ati	Running
cirrus	Stopped
cpqfws2e	Stopped
dac960nt	Stopped
dce376nt	Stopped
dtc329x	Stopped
et4000	Stopped
flashpnt	Stopped

i8042 Keyboard and PS/2 Mouse Port Driver	Stopped
mga	Stopped
mga_mil	Stopped
mitsumi	Stopped
mkecr5xx	Stopped
ncr77c22	Stopped
psidisp	Stopped
qv	Stopped
s3	Stopped
slcd32	Stopped
sscctrl	Running
symc810	Stopped
tga	Stopped
tmv1	Stopped
update	Stopped
v7vram	Stopped
wd90c24a	Stopped
wdvga	Stopped
weitekp9	Stopped
ydsxg	Running

I/O Resource Information :

IRQ	Vector	Name		Affinity	Bus number	Type
00	00	PC Compatible	Eisa/Isa HAL	00000001	0	ISA
00	00	PC Compatible	Eisa/Isa HAL	00000001	0	Internal
01	01	PC Compatible	Eisa/Isa HAL	00000001	0	Internal
01	01	l8042prt		FFFFFFFF	0	ISA
02	02	PC Compatible	Eisa/Isa HAL	00000001	0	Internal
03	03	PC Compatible	Eisa/Isa HAL	00000001	0	Internal
04	04	PC Compatible	Eisa/Isa HAL	00000001	0	Internal
04	04	Serial		00000000	0	ISA
05	05	PC Compatible	Eisa/Isa HAL	00000001	0	Internal
06	06	PC Compatible	Eisa/Isa HAL	00000001	0	Internal
06	06	Floppy		00000000	0	ISA
07	07	PC Compatible	Eisa/Isa HAL	00000001	0	Internal
07	07	Winmodem		00000000	0	ISA
08	08	PC Compatible	Eisa/Isa HAL	00000001	0	ISA
08	08	PC Compatible	Eisa/Isa HAL	00000001	0	Internal
09	09	PC Compatible	Eisa/Isa HAL	00000001	0	Internal
09	57	ydsxg		00000001	0	PCI
10	10	PC Compatible	Eisa/Isa HAL	00000001	0	Internal
10	10	DC21X4		00000000	0	PCI
11	11	PC Compatible	Eisa/Isa HAL	00000001	0	Internal
12	12	PC Compatible	Eisa/Isa HAL	00000001	0	Internal
12	12	l8042prt		FFFFFFFF	0	ISA
13	13	PC Compatible	Eisa/Isa HAL	00000001	0	Internal
14	14	PC Compatible	Eisa/Isa HAL	00000001	0	Internal
14	00	atapi		00000000	0	ISA
15	15	PC Compatible	Eisa/Isa HAL	00000001	0	Internal
15	00	atapi		00000000	0	ISA
16	16	PC Compatible	Eisa/Isa HAL	00000001	0	Internal
17	17	PC Compatible	Eisa/Isa HAL	00000001	0	Internal
18	18	PC Compatible	Eisa/Isa HAL	00000001	0	Internal
19	19	PC Compatible	Eisa/Isa HAL	00000001	0	Internal
20	20	PC Compatible	Eisa/Isa HAL	00000001	0	Internal
21	21	PC Compatible	Eisa/Isa HAL	00000001	0	Internal
22	22	PC Compatible	Eisa/Isa HAL	00000001	0	Internal
23	23	PC Compatible	Eisa/Isa HAL	00000001	0	Internal
24	24	PC Compatible	Eisa/Isa HAL	00000001	0	Internal



25	25	PC Compatible	Eisa/Isa	HAL	00000001	0	Internal
26	26	PC Compatible	Eisa/Isa	HAL	00000001	0	Internal
27	27	PC Compatible	Eisa/Isa	HAL	00000001	0	Internal
28	28	PC Compatible	Eisa/Isa	HAL	00000001	0	Internal
29	29	PC Compatible	Eisa/Isa	HAL	00000001	0	Internal
30	30	PC Compatible	Eisa/Isa	HAL	00000001	0	Internal
31	31	PC Compatible	Eisa/Isa	HAL	00000001	0	Internal
32	32	PC Compatible	Eisa/Isa	HAL	00000001	0	Internal
33	33	PC Compatible	Eisa/Isa	HAL	00000001	0	Internal
34	34	PC Compatible	Eisa/Isa	HAL	00000001	0	Internal
35	35	PC Compatible	Eisa/Isa	HAL	00000001	0	Internal
36	36	PC Compatible	Eisa/Isa	HAL	00000001	0	Internal
37	37	PC Compatible	Eisa/Isa	HAL	00000001	0	Internal
38	38	PC Compatible	Eisa/Isa	HAL	00000001	0	Internal
39	39	PC Compatible	Eisa/Isa	HAL	00000001	0	Internal
40	40	PC Compatible	Eisa/Isa	HAL	00000001	0	Internal
41	41	PC Compatible	Eisa/Isa	HAL	00000001	0	Internal
42	42	PC Compatible	Eisa/Isa	HAL	00000001	0	Internal
43	43	PC Compatible	Eisa/Isa	HAL	00000001	0	Internal
44	44	PC Compatible	Eisa/Isa	HAL	00000001	0	Internal
45	45	PC Compatible	Eisa/Isa	HAL	00000001	0	Internal
46	46	PC Compatible	Eisa/Isa	HAL	00000001	0	Internal
47	47	PC Compatible	Eisa/Isa	HAL	00000001	0	Internal
50	50	PC Compatible	Eisa/Isa	HAL	00000001	0	Internal

I/O Port	Name	Bus	Bus number
0000-000F	PC Compatible Eisa/Isa HAL	Internal	0
0020-0021	PC Compatible Eisa/Isa HAL	Internal	0
0040-0043	PC Compatible Eisa/Isa HAL	Internal	0
0048-004B	PC Compatible Eisa/Isa HAL	Internal	0
0060-0060	l8042prt	ISA	0
0061-0061	PC Compatible Eisa/Isa HAL	Internal	0
0064-0064	l8042prt	ISA	0
0070-0071	PC Compatible Eisa/Isa HAL	Internal	0
0080-008F	PC Compatible Eisa/Isa HAL	Internal	0
0092-0092	PC Compatible Eisa/Isa HAL	Internal	0
00A0-00A1	PC Compatible Eisa/Isa HAL	Internal	0
00C0-00CF	PC Compatible Eisa/Isa HAL	Internal	0
00F0-00FF	PC Compatible Eisa/Isa HAL	Internal	0
0110-0117	Winmodem	ISA	0
0170-0177	atapi	ISA	0
01CE-01CF	VgaSave	PCI	0
01F0-01F7	atapi	ISA	0
0201-0201	ydsxg	PCI	0
0330-0331	ydsxg	PCI	0
0376-0376	atapi	ISA	0
0378-037A	Parport	ISA	0
03B0-03BB	VgaSave	PCI	0
03B0-03BB	ati	PCI	1
03C0-03DF	VgaSave	PCI	0
03C0-03DF	ati	PCI	1
03C4-03C5	ati	PCI	1
03C5-03C5	ati	PCI	1
03CE-03CF	ati	PCI	1
03CF-03CF	ati	PCI	1
03F0-03F5	Floppy	ISA	0
03F6-03F6	atapi	ISA	0
03F7-03F7	Floppy	ISA	0
03F8-03FE	Serial	ISA	0
1000-107F	DC21X4	PCI	0
9000-90FF	ati	PCI	1

DMA				
Channel	Port	Name	Bus	Bus number
02	0	Floppy	ISA	0

Memory			
Address	Name	Bus	Bus number
000A0000-000BFFFF	VgaSave	PCI	0
000A0000-000BFFFF	ati	PCI	1
F4000000-F4007FFF	ydsxg	PCI	0
F5000000-F57FFFFF	ati	PCI	1

## **Program Not Available**

Windows is not able to run the program required to perform this operation.

