



A "DeFault Directory" tool for the Mac.

Version 1.0. Written by Jon Gotow, July 13, 1989.

Introduction:

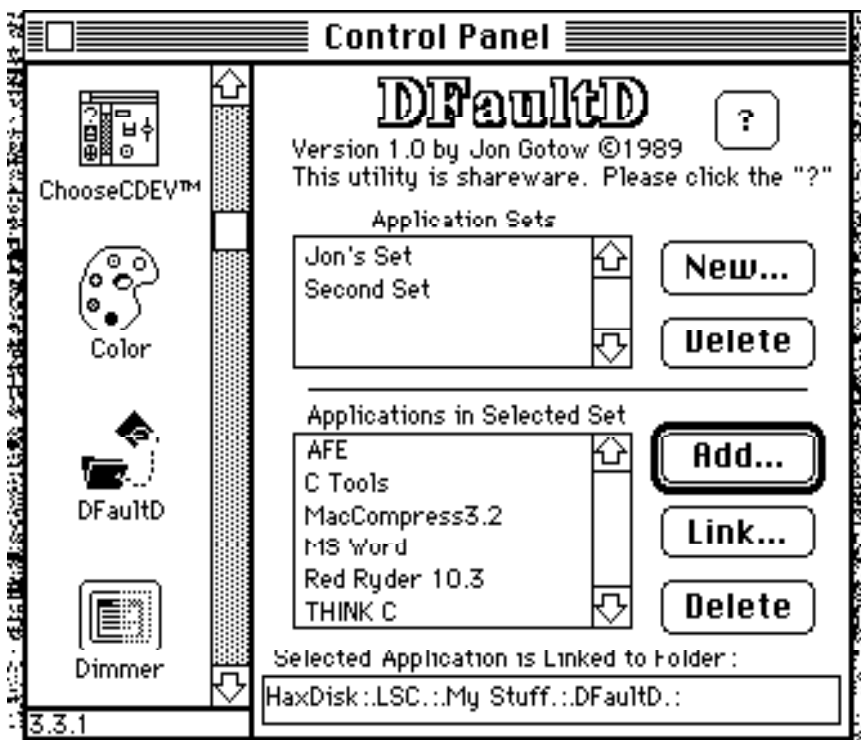
The concept for this cdev arose out of a particular inconvenience inherent in otherwise wonderful utilities like HD Runner and On Cue. The problem with these programs is that although you can conveniently launch an application from just about anywhere, there's no way to set the folder you want the application to use when you do an "Open..." or "Save..." (except by launching it with an attached document that resides in that folder, then closing that document and opening the one you want - a major kludge). You get the convenience of quick launching, but then have to go dredging through your entire folder hierarchy anyway so you can open or save a file. Not a pretty picture.

Upon examining my and my friends' computing habits, we identified the need to associate a particular folder with a particular application, since most people use certain combinations on a regular basis. For example, when programming a project like this one, I want all my programming tools to default to the folder where I'm doing my development. Also, I always download and unstuff new toys from bboards in the same folder, so I want my terminal emulator and Stuffit to default to that folder. It seemed that there was a need for something that set a "default directory" (ahem, folder) for each application. DFaultD lets you do just that.

Operation:

I tried to design DFaultD so that it runs as unobtrusively as possible, while still allowing a reasonable amount of flexibility. I should note that this utility is very much intended to set long term links, rather than hopping back and forth between folders as the Boomerang init will let you do. It does, however, let you set up different "Application Sets," so you can configure any number of work environments with different default folders linked to the same bunch of applications. This is useful if you have more than one person using the same computer, or if you use your Mac in very different ways, such as programming, work, and running your home business. You can configure a set of default folders for each different mode in which you use your Mac.

Using DFaultD is very simple. The cdev appears as shown below. When an application set is selected in the upper list, the applications in that set are displayed in the lower list. When you select one of the applications in the lower list, the path name of the application's default folder is displayed in the box at the bottom.



The buttons function as follows:

- ?** Displays the about screen, including some minimal help.
- New...** Creates a new application set. You'll be prompted to name the new set, and if an old set was selected when you clicked "New...", you are also given the option to copy all the links from the old set. This feature is very useful for setting up a standard set of applications and folders, and then copying and customizing several sets to a specific user or work scenario.
- Delete...** The upper "Delete" button allows you to delete the currently selected application set and all its associated links (never would have guessed that one, eh?).
- Add...** Allows you to add a new application to the currently selected application set. It automatically prompts you to link the application to a folder when you add it, and displays the linked folder name in the bottom box.
- Link...** Allows you to specify a new default folder link for the application selected in the application list.

Delete Deletes the selected application from the application list.

The application set which DFaultD uses to set the default folder at application launch time is the one which is selected when you exit from the cdev. DFaultD will also display a message at startup to remind you which set it's currently using.

Bug Reports, Donations, etc.:

I'm distributing this as shareware (\$7), and would appreciate your sending your donations to me at the address below. I'd also like to hear impressions and bug reports from anyone who cares to write me a postcard at:

Jon Gotow
692 Darlington Drive
Old Bridge, NJ 08857