

SoftSearch DEMO

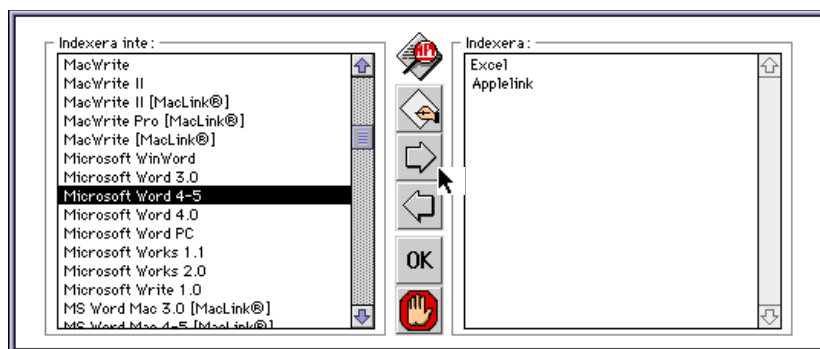
Draft manual

(due to shortage in time, screendumps are in Swedish. Sorry about
this...)

Copyright 1995-1996
Ronald Ek
ronalde@softdes.se

Create a new index

1. Choose "New" from the File-menu.
2. Choose "Filetypes" from the Index-menu.
3. Select the type of files you want to include in your index.



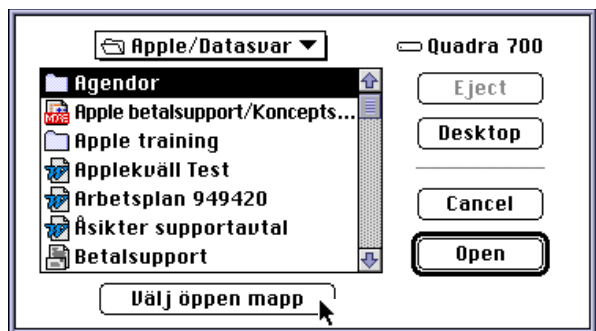
Select filetypes by clicking on them in the left list and move them to the right list by clicking the button with an arrow pointing to the right. You can add new filetypes by clicking on the button with an application-symbol and select files in the dialog box that opens. Click "OK" when you are done.

4. Click the button for Indexing/Updating.
You can stop indexing by pressing

command-. and continue indexing later.



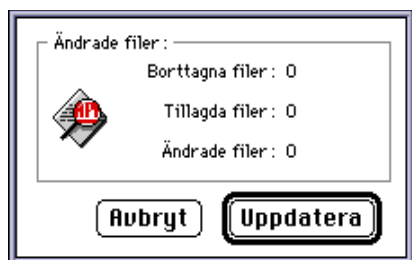
5. Move to the folder you want to index and click "Select open folder". All files in this folder and sub-folders will be indexed.



6. After indexing is done you save the index with a new name.

Update index

1. Chose "Open" from the File-menu.
2. Click the button for Indexing/Updating.
3. A dialog box shows where eventual changes are marked. Click "Update" or "Cancel".



4. Save the updated index with a new name or replace the old index.

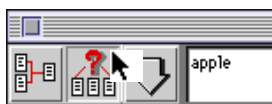
Searching

1. Type the text you want to search for in the top-most field.



You can use "&" and "|" to search for many words at the same time. Using "&" between words means they both have to be in the same file (apple&video will only find files where both apple and video is included). Using "|" means that any of the words can be included (apple|video will find all files where apple or video is included. Normally the whole word must match but adding an asterisk "" to the end or beginning of a word will also find parts of words (app* will find files with apple or application etc.).*

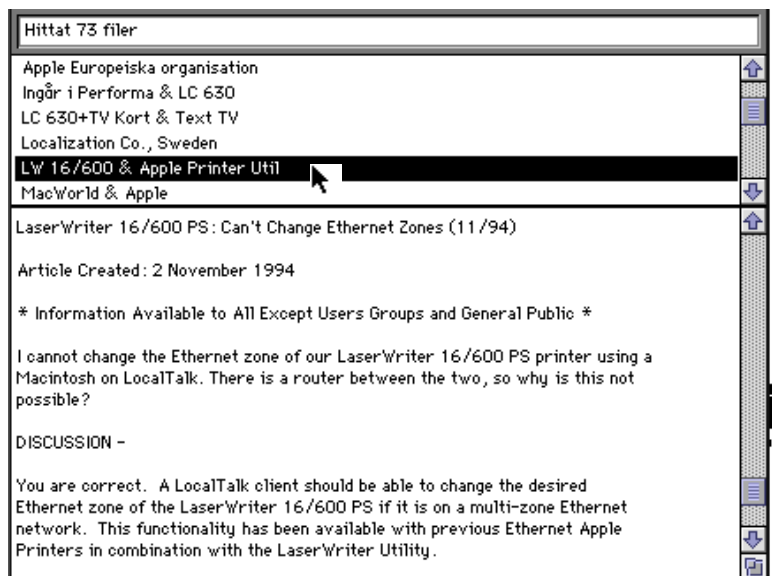
2. Press the Return-key or click the Search-button.



3. The list will show found files.



4. Click on filename to see the file. Holding down the command-key while selecting a file will open the document with the application that created it.



5. If you want to find the location of the word in the text, select the word and click on the "Find next" button.



LIMITATIONS IN DEMO-VERSION

Indexes can only be used 2 days after creation.

SYSTEM REQUIREMENTS

System 7.1 or later

Minimum 3 MB free RAM. For large indexes you might need more.

XTND-system installed (You can use it without XTND but not take advantage of all features.)

©RONALD EK. ALL RIGHTS RESERVED 1995-1996.

More info available via mail ronalde@softdes.se or phone +46(0)684-14014.

**We are currently looking for distributors in the U.S. Are you interested?
Please let me know.**