



File Eater 2.0 für Windows NT

Please choose one of the following topics:

Overview

[What is File Eater?](#)

[Deleting Files and Directories](#)

[Shareware-Informationen](#)

Commands

[File Menu Commands](#)

[Options Menu Commands](#)

[Help Menu Commands](#)

[System Menu Commands](#)

[Toolbar](#)

Keyboard

[Using the Keyboard](#)

What is File Eater?

The utility **File Eater for Windows NT** works hand-in-hand with the Windows NT File Manager to delete files, directories and whole directory trees.

But why should you use File Eater? Doesn't has the Windows NT File Manager a good delete function, too?

Well, File Eater has three different advantages to the File Manager:

1. If you have worked with other graphical user interfaces (like Apple Macintosh), perhaps you are missing the famous **trash can** in Windows, where you can drop files to delete with the mouse. With File Eater you have this utility in Windows NT now.
2. Files, which are deleted by the File Manager or with the DEL command in the Command Prompt, cannot be recovered in Windows NT. A **Undelete** is only possible on FAT-Partitions (using MS-DOS). File Eater saves deleted files and directories temporary in a hidden buffer directory, and you can undelete them if it is necessary.
3. Because of the multitasking and multithreading possibilities in Windows NT you can work further more in the File Manager without waiting after you have dragged and dropped the files, while File Eater does its work in the background.

Tip: If you place the icon of File Eater in the Startup Group of the Program Manager, the utility is available in every Windows session.

Deleting Files and Directories

The utility **File Eater** needs for working the Windows NT File Manager you already own.

To delete files/directories with **File Eater**, the Windows NT File Manager must be open.

The drive windows of the File Manager are splitted in a left and a right half. The left part displays the directory tree and in the right part you can see the files of the actual selected directory.

From the right part you can select and drag one or more files and directories with the mouse to the **File Eater**'s icon on the desktop.

After this procedure File Eater begins to delete the selected files.

Note: File Eater accepts only files and directories which are selected from the *right* part of the drive windows in the File Manager.

If you have enabled the option **Delete with Buffer** in the [Properties Dialog box](#), the files and directories will be stored in a hidden directory on the hard disk and will be displayed in the window of **File Eater**.

The advantage of this option is, that you can restore deleted files and directories, if you want. With **File Eater** Windows NT gets an **Undelete** function!

Note: Files and directories from removeable media (such as floppy disks) can be dropped onto **File Eater**, but they will not be handled like other files and directories. They cannot be stored in the hidden buffer directory. Instead they will be deleted permanently.
If you use a network or a NTFS partition, you must have the user right to add a directory in the Root Directory of the respective hard disk.
(Please contact your System Administrator to change user rights)



Shareware-Informationen

The shareware distribution method is an innovative way to market - and obtain! - exciting new software like **File Eater**. Users like yourself are given the opportunity to test-drive software for free or a minimal diskette charge, and independent software companies are offered the freedom to develop and publish their software titles with minimal overhead. Low overhead helps keep prices down and spurs a brand of creativity and dedication found only in the shareware market.

Shareware distribution relies upon the support of those who use shareware programs: Please feel free to give copies of **File Eater** to your friends and colleagues. And if you use **File Eater** beyond the evaluation period, please register.

This program may be used for a 30 day period without cost. After this period, you must either register the program or remove it from your system.

To register, you need to pay the required registration fee. As a registered user, you will be granted a license for continued use of the software. You will also receive a diskette containing the latest version of **File Eater**, and you can get the full source code (written in Visual C++ with MFC 2.1), if you want.

Registration Cost: US\$ 20,00

Source code on a 3,5" floppy disk: US\$ 10,00

Add US\$ 4,00 for shipping and handling in the U.S. or other countries.

Payment is accepted in U.S. funds by check (cheque) or money order. Please make checks (cheques) or money orders payable to "Mario Anthes".

A german and an english version of the program is available.

Please pay the registration fee to:

Mario Anthes
Heinrich-Engel-Str. 22
64572 Klein-Gerau
GERMANY

E-Mail address: dragon@rbg.informatik.th-darmstadt.de

Thank you for your interest.

File Menu Commands

Delete

Deletes the selected files/directories out of the list and removes them from the drive. After that these files and directories cannot be undeleted.

See also:

[Deleting files and directories out of File Eater](#)

Undelete

Restores the selected files/directories to their old position.

See also:

[Undeleting files and directories](#)

Select All

Selects all files and directories in the list. Selected files/directories can then be deleted final or be restored to their old position.

Exit

Quits the program.

Options Menu Commands

Toolbar

Enables or disables the toolbar.

See also:

[Toolbar](#)

Status Bar

Enables or disables the status bar.

Properties

Displays the dialog box to configure File Eater.

See also:

[Properties Dialog box](#)

Sound

Displays the dialog box to associate sounds (WAV-files) to different events of File Eater.

See also:

[Sound Dialog box](#)

Font

Displays the dialog box to change File Eater's actual font.

See also:

[Font Dialog box](#)

Help Menu Commands

Contents

Shows the index of File Eater Help.

Search

Searches for a topic in File Eater Help.

How to Use Help

Displays information about using the Help Window.

About File Eater

Displays information, program version and copyright of File Eater.

System Menu Commands

Restore

Restores the window to its previous size.

Move

Moves the window to another position.

Size

Changes the size of the window.

Minimize

Reduces the window to an icon.

Maximize

Enlarges the window to its maximum size.

Close

Closes the window and exit File Eater.

Switch To

Opens the Task List of Windows NT.








Always on Top

Makes sure that this program window, even when no longer the active window, stays visible over any other window on the display.

The Toolbar



Each button on the tool bar is a "short cut" equivalent to the menu items listed below.

Button	Action	Menu Command
	<u>Delete Files</u>	File / Delete
	<u>Undelete Files</u>	File / Undelete
	Select all Files	File / Select All
	Shows <u>Properties Dialog box</u>	Options / Properties
	Shows <u>Sound Dialog box</u>	Options / Sound
	Shows <u>Font Dialog box</u>	Options / Font
	Shows About Dialog box	Help / About File Eater

Using the Keyboard

Use the following keys in the main window of File Eater:

Push	For
F1	Help
Del	Deleting the selected files
F8	Undeleting the selected files
F9	Selecting all files in the list
ALT+F4	Closing File Eater
Arrow Keys	Moving in the file list
PAGE UP	Scrolling a page up
PAGE DOWN	Scrolling a page down
POS1	Jumping to the begin of the list
END	Jumping to the end of the list



The Properties Dialog box

In this dialog box you can configure File Eater.

Click on the regions in the graphic to get more information.



Choose one of the icon pairs. File Eater will be painted on the Desktop with the selected icon.

Choose **with buffer**, if you possibly want to restore deleted files or directories. Then the files will not be deleted directly, but they will be saved in a hidden buffer directory on the respective drive.

Note: Delete with buffer is only available for local and network hard disks. Files from removeable media like a floppy will be deleted directly and unrecoverable.

Here you can enable or disable a security question before a file or a directory will be deleted.

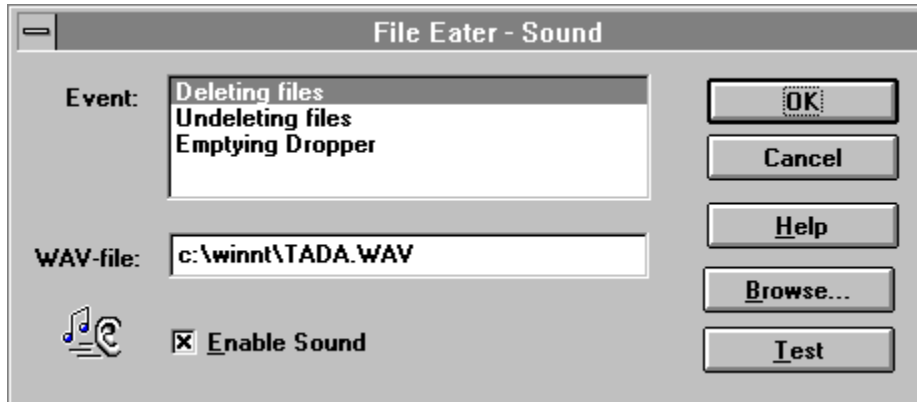
Here you can enable saving your properties and if you wish to get a warning, if there are files pending in the buffer on exit.



The Sound Dialog box

In this dialog box you can enable or disable sounds. This dialog is only available, if your system has an multimedia sound board installed, which can play WAV-files.

Click on the regions in the graphic to get more information.



In this list you can choose an event, that will be associated with the actual sound file.

Here you can write the path name of a WAV-file you want to hear. This sound will be played, if one of the selected events will happen.

With this check box you can enable or disable the sounds in File Eater.

With this button you can choose a sound file from a file open dialog. The selected file should be on a local hard drive because of the performance.

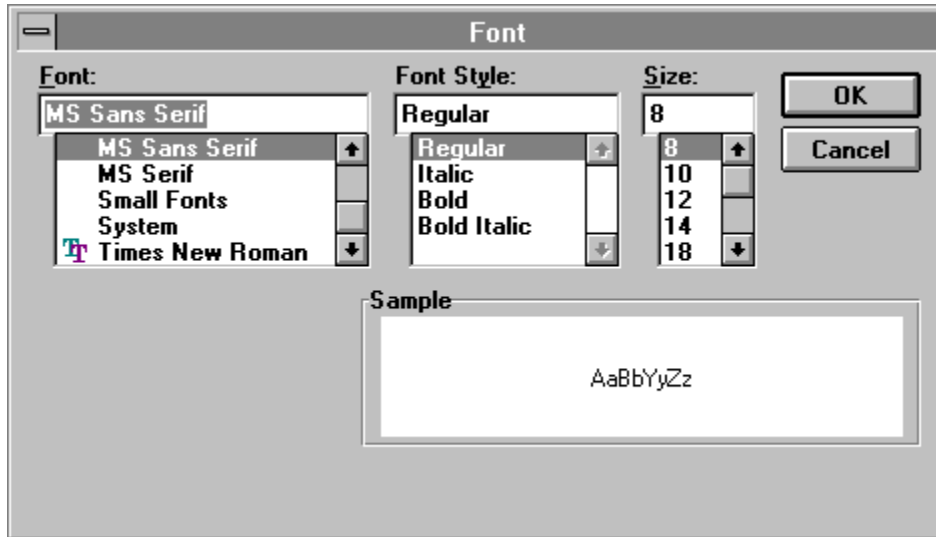
With this button you can test the selected sound.



The Font Dialog box

In this dialog box you can change the font to display the buffered files and directories in File Eater's file list.

Click on the regions in the graphic to get more information.



You can choose a font installed in the system in this list.

Here you can choose one of the offered font styles.

Here you can choose the size of the font in points. Sizes less than 6 point or greater than 24 point are not allowed.

Here you can see an example of your actual selection.



Deleting Files and Directories out of File Eater

Files and directories, which are being in the buffer, should be removed from time to time out of File Eater and out of the respective drive.

You can compare this with emptying a trash can, if it is full.

Note: Files and directories, which are being deleted out of File Eater, cannot be restored after that!



Undeleting Files and Directories

Files and directories, which are being in the buffer, can be restored, if you want.

In this way an **Undelete** is possible, if you have deleted files or directories unintentional.

Note: While files are being restored there can appear a problem in some cases.
(For example if you want to restore files or directories, but their pathes don't exist.)

