

Using the DART Pro Wave Manager

DART Wave Manager is an application that allows you to combine several soundfiles into a sequence called playlist. The playlist environment can be used to compose and store lists of recordings scattered over different disk directories, rearrange the lists in any desired order and play the corresponding soundfiles. If your computer is equipped with a compact disk recorder (CD-R) Wave Manager will also let you record your own CD!

If you need more information on any of the Wave Manager functions, select one of the topics listed below:

[Adding files to the playlist](#)

[Managing playlists](#)

[Listening to the playlist](#)

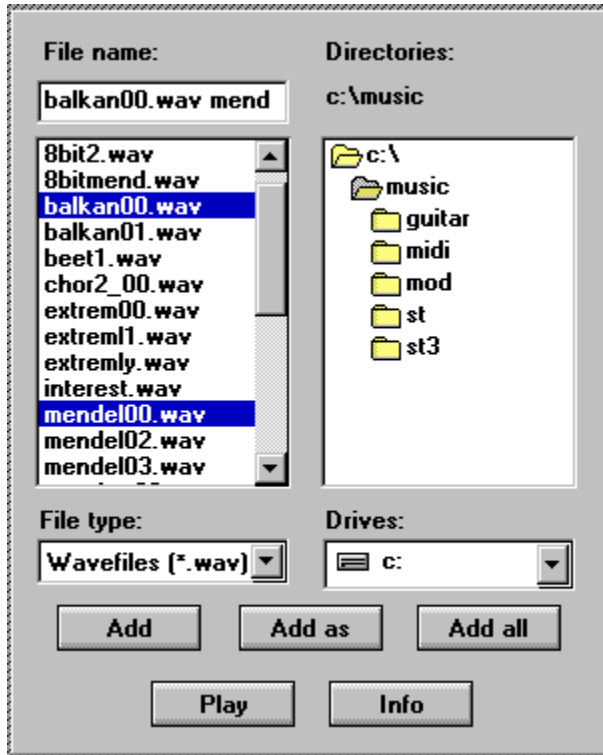
[Reading tracks from an audio CD](#)

[Recording a CD](#)

[How to ...](#)

File panel

The File panel allows you to select the soundfiles you want to add to your playlist. To get help on a particular panel item, click on it.



Displays the currently selected soundfile. Does not allow you to edit the text.

Displays the contents of the current directory. You may select the files by means of clicking on them with the left mouse button. To select more than one file, hold down the `CTRL` key while clicking. To select a group of files, select the first file of the group, hold down the `SHIFT` key and select the last file. You may add the file to the playlist by double-clicking its name.

Displays the name of the current directory.

Displays the directory tree. You may open the subdirectory by double-clicking its folder.

Allows you to select the type of the files displayed in the **Files** listbox.

Allows you to select the drive.

Adds the currently selected file(s) to the playlist. The same can be achieved by double-clicking the file in the **Files** listbox.

Adds the currently selected soundfile to the playlist and allows you to change the name under which it will appear on the playlist. The same can be achieved by clicking the **Add** button and then clicking the **Rename** button on the Playlist panel. This function is disabled if more than one file is selected.

Adds to the playlist all files displayed in the **Files** listbox.

Displays information on the currently selected soundfile. If several soundfiles are selected, information on the first one is given.

Plays the currently selected soundfile. If several soundfiles are selected, the first one is played.

Playlist Panel

The Playlist Panel allows you to manage your playlist. To get help on a particular panel item click on it.



Displays the true name of the currently selected soundfile (the name under which it is saved on your hard disk).

Displays the current contents of the playlist. Click the item to select it. Double-click the item to rename it.

Moves upwards the currently selected item of the playlist.

Plays the currently selected item of the playlist.

Moves downwards the currently selected item of the playlist.

Displays the total playing time of all items on the playlist.

Displays the total number of bytes of all items on the playlist.

Removes the currently selected item from the playlist.

Allows to change the playlist name the currently selected item (does not affect the true name of the soundfile).

Displays information on the currently selected item of the playlist.

Control buttons

The control buttons placed at the bottom of the playlist panel work similarly as the analogous buttons in an analog tape deck

Click the button you want to get more information on:



Previous Stop Pause Play Next Mode

Plays the previous item.

Stops the playback.

Pauses the playback and allows it's resumption.

Starts the playback.

Plays the next item.

Allows to change the playback mode. See [Playback modes](#)

Playback Modes

You may select one of three playback modes:

Normal mode



Plays all soundfiles in the playlist starting from the currently selected item. Playback stops when the end of the playlist is reached.

Loop mode



Plays all soundfiles in the playlist starting from the currently selected item. When the end of the playlist is reached, the first soundfile is selected and the playback is resumed.

Sample mode



Plays a five second fragment of each of the soundfiles in a playlist, starting from the currently selected item. Playback stops when the end of the list is reached.

Using Toolbar

The Toolbar gives you the access to some of the most frequently used menu items.
Click on the button you want to get help on



Using menu

Wave Manager menus give you access to disk operations you can perform with your playlist, allow you to control the screen layout and provide you with the necessary information on the Wave Manager.

When the menu item is selected its brief description is displayed on the status bar.

List
View
Help

List Menu

Gives access to the file managing instructions. Allows you to save and load your playlist and to exit the program.

New command allows you to create a new playlist from the scratch. You may later save it to disk using **Save** or **Save as** command and retrieve it by the means of **Load** command.

When you have finished working with DART Pro Wave Manager, you may use **Exit** command to quit the application.

New

Open

Save

Save As

Write to CD

Read Track

Exit

View Menu

Controls the display options of the Wave Manager window.

Using this menu you may turn the toolbar and the status bar on and off.

Toolbar

StatusBar

Help Menu

Gives access to the Wave Manager help system and provides information about the program.

[Contents](#)

[About](#)

New (List Menu)

Allows you to create a new (empty) playlist you can add the files to.

Note: Creating a new playlist causes the currently displayed one to be deleted.

Open (List Menu)

Allows you to open a playlist saved on the disk. After selecting this command you have to select a file containing your playlist using the **File open** dialog.

Note: Opening a playlist saved on the disk causes the one currently displayed to be deleted.

Save (List Menu)

Allows you to save the current playlist on the disk. If the playlist has not been saved yet, you have to specify its name using the **File save** dialog. If you do not specify the file extension, the default .WMN extension will be added.

If you want to save a playlist with a different name, use the **Save As** command.

Save As (List Menu)

Allows you to save a playlist under a different name. You have to specify the new name using the **File save** dialog. If you do not specify the file extension, the default .WMN extension will be added.

Exit (List Menu)

Allows you to quit the DART Pro Wave Manager.

Note: Quitting Wave Manager deletes the current playlist.

Toolbar Command (View Menu)

Allows you to switch the toolbar on and off. The check mark by the command means the option is on.

Status bar Command (View Menu)

Allows you to switch the status bar on and off. The check mark by the command means the option is on.

Allows you to display/hide the status bar. Status bar is the information line displayed at the bottom of the Wave Manager window, providing you with information on the currently selected menu command, state of the keyboard keys etc.

Contents (Help Menu)

Activates the Wave Manager Help system.

Note: You may invoke this command by pressing the `F1` key.

About (Help Menu)

Displays information on the current version of the DART Pro Wave Manager.

Listening to the playlist

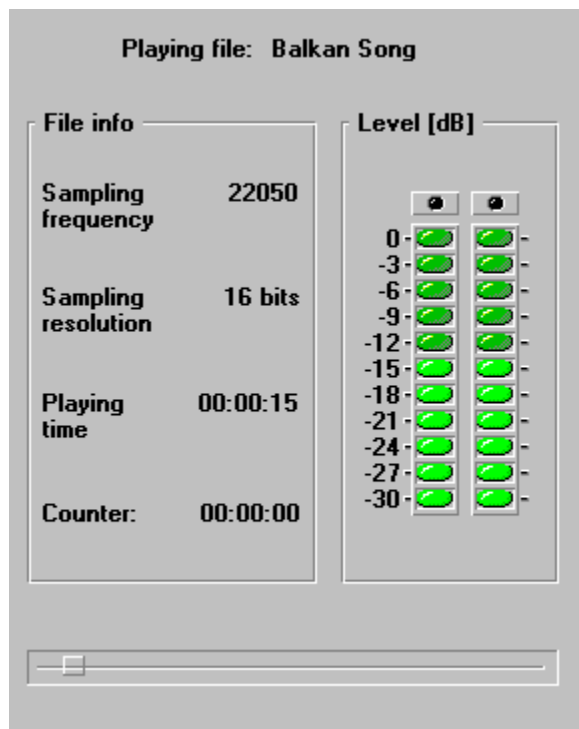
To control playback of the playlist you can use a number of Control buttons:



Previous Stop Pause Play Next Mode

During playback, Wave Manager gives you information on the currently played soundfile. This information is displayed in the PlayInfo Panel, which replaces the File Panel. The PlayInfo Panel contains information on the name and type of the currently played audio file. Additionally, it shows the current position within the soundfile.

If you would like to learn more about the PlayInfo Panel, click on the item you are interested in:



Displays the name of the currently played playlist item.

Shows the current content of the play counter.

The clip indicator - flashes when the output level is too high.

Displays the current output level. There is one display for a mono soundfile and two displays for a stereo soundfile (one for each channel).

Displays the length of the currently played soundfile.

Displays the current position within the soundfile.

Displays the sampling resolution of the currently played soundfile.

Displays the sampling frequency of the currently played soundfile.

How to ...

Playlist handling:

Create a new playlist

Save a playlist

Save a playlist under a different name

Playlist managing:

Add a soundfile to the playlist

Add all soundfiles in a selected directory to the playlist

Remove a soundfile from the playlist

Rename a soundfile being a part of a playlist

Get information about a soundfile being a part of a playlist

Play a soundfile being a part of a playlist

Soundfiles:

Get information about a soundfile that is not a part of a playlist

Play a soundfile that is not a part of a playlist

Playing:

Play the entire playlist once

Play the entire playlist in a loop

Sample the playlist

CD Recording:


Record a CD

Adjust silence gaps between audio tracks

Read track from an audio CD

Creating a new playlist


To create a new (empty) playlist which can be filled up with soundfiles of your choice do one of the following:

- Select the **New** command from the **List** menu
- Click  on the toolbar
- Press CTRL+N

See also: List Menu

Saving a playlist

To save a playlist on the disk do one of the following:

- Select the **Save** command from the **List** menu
- Click  on the toolbar
- Press CTRL+S

If you save the file for the first time, you have to specify its name in the **File Save** dialog box. Otherwise the file will be saved with the name it was given before.

See also: List Menu

Saving a playlist under a different name

To save a playlist on the disk under a new name, select the **Save as** command from the **List** menu. You have to specify a new name of the list.

See also: [List Menu](#)

Adding a soundfile to the playlist

To add a soundfile to the playlist, do one of the following:

1. Use the **Files** listbox to select the soundfile you want to add.
2. Click the **Add** button.

or

- Double-click the name of the soundfile you want to add.

The selected soundfile will appear on the playlist panel on the right side of the window.

See also:

[File Panel](#)

Adding to the playlist all soundfiles from a selected directory

To add all soundfiles in a directory to the playlist, do the following:

1. Use the File Panel to select the directory containing files you want to add (for more information see [File Panel](#))
2. Click the **Add all** button.

All soundfiles displayed in the **Files** listbox will be added to the playlist.

Removing a soundfile from the playlist

To remove a soundfile from the playlist, do the following:

1. Use the Playlist Panel to select the soundfile you want to remove.
2. Click the **Remove** button.

See also:

[Playlist panel](#)

Renaming a soundfile being a part of the playlist

To rename a soundfile being a part of the playlist, do one of the following:

1. Use the Playlist Panel to select the soundfile you want to rename.
2. Click the **Rename** button.
3. Type a new name of the soundfile in the **Enter new filename** dialog box.
4. Click **OK** or press **ENTER**.

or

1. Move the pointer to the **Files** listbox and double-click the soundfile you want to add.
2. Type a new name of the soundfile in the **Enter new filename** dialog box.
3. Click **OK** or press **ENTER**.

See also:

[Playlist panel](#)

Getting information about a soundfile being a part of the playlist


To get information on a soundfile being a part of the playlist, do the following:

1. Use the Playlist Panel to select the appropriate soundfile.
2. Click the **Info** button.

Information about the selected soundfile will be displayed in the **File Info** dialog box. To close this dialog click the **Close** button.

Playing a single soundfile being a part of the playlist

If you want to listen to a single file that is a part of the playlist, do the following:

1. Use the Playlist Panel to select the appropriate soundfile.
2. Click the  button.

The **Playing** dialog will appear and the soundfile will be played. To stop playback press the `ESC` key or click the left mouse button.

Getting information about a soundfile that is not a part of a playlist

If you want to get information about a soundfile that is not a part of the playlist, do the following:

1. Use the File Panel to select the appropriate soundfile.
2. Click the **Info** button.

Information about the selected soundfile will be displayed in the **File Info** dialog box. To close this dialog click the **Close** button.

Playing a soundfile that is not a part of a playlist

If you want to listen to a soundfile that is not a part of a playlist, do the following:

1. Use the File Panel to select the appropriate soundfile.
2. Click the **Play** button.

The **Playing** dialog will appear and the soundfile will be played. To stop playback press the `ESC` key or click the left mouse button.

Playing the entire playlist once

If you want to play the entire playlist once, do the following:

1. Keep clicking the **Mode** control button on the Playlist Panel until the mode is set to 'Normal'.
2. Click the **Play** control button on the Playlist Panel.



Playing the entire playlist in a loop

If you want to play the entire playlist in a loop, do the following:

1. Keep clicking the **Mode** control button on the Playlist Panel until the selected mode is set to 'Loop'.
2. Click the **Play** control button on the Playlist Panel.



Sampling the playlist

If you want to play a short fragment of each soundfile comprising the playlist, do the following:

1. Keep clicking the **Mode** control button on the Playlist Panel until the selected mode is set to 'Sample'.
2. Click the **Play** control button on the Playlist Panel.



'Write to CD' Command (List Menu)

This command allows you to publish the playlist on a CD, provided an appropriate hardware has been installed on your computer.

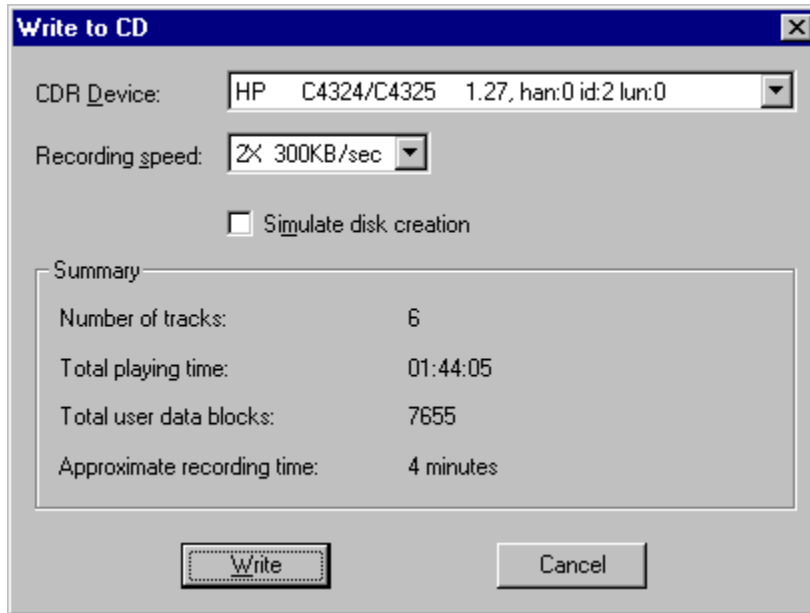
Before writing to a CD is initialized, Wave Manager performs several checks on the soundfiles comprising the list. The following three conditions must be satisfied prior to recording:

1. The playlist must consist of at least one but not more than 99 soundfiles.
2. Each of the soundfiles has to be at least 4 seconds long.
3. Soundfiles must be CD format compatible. Whenever necessary Wave Manager will automatically convert any WAV soundfile to a CD format. To learn more about this feature, see [Recording a CD](#).

When the above conditions are satisfied, Wave Manager opens the **Write to CD** dialog box, allowing you to control various aspects of CD recording, such as recording speed and recording mode. For more information on the **Write to CD** dialog see [Write to CD dialog](#).

'Write to CD' dialog

This dialog box gives you control over various aspects of CD recording. To get help on a particular dialog item, click on it.



Allows you to specify a device used for recording (useful if your system is equipped with more than one CD recorder).

Allows you to specify the recording speed.

When you choose this option, all actions will be identical with those taken during actual recording, but no data will be written to a CD. This feature allows you to check if your system is capable of recording with a selected speed.

Displays a number of tracks to be written to a CD.

Displays a total playing time of a CD in hours, minutes and seconds.

Displays a number of user data blocks to be written to a CD.

Displays an approximate recording time.

Starts writing.

Closes the dialog.

Recording a CD

Wave Manager offers you a possibility to create and record your own CD, provided your system is equipped with a CD-R.

Prior to recording you must specify which files (and in what order) should be placed on a CD. This can be done by creating a playlist of soundfiles. Instructions on how to create a playlist can be found at [How to create a new playlist](#).

Wave Manager creates CD's in a standard audio format which can be read by every CD player. For this reason the playlist items must fulfill several standard restrictions:

1. The playlist must consist of at least one but not more than 99 soundfiles.
2. Each soundfile has to be at least 4 seconds long.
3. Soundfiles must be CD format compatible.

Since Wave Manager provides automatic audio file conversion you do not have to worry about the last requirement.

When your playlist is complete you may adjust spacing between the audio tracks. DART Pro allows you to individually adjust silence gaps between consecutive CD tracks. For more information on this feature see [Adjusting silence gaps between audio tracks](#).

Now you are ready to record a CD. To do this click the **WRITE TO CD** button on the toolbar or select the **Write to CD** command from the **List** menu.



WRITE TO CD button

Prior to recording the Wave Manager checks all items on the playlist and runs the CD format conversion procedure if necessary. To learn more on resampling see ['Check CD Format' dialog](#).

When conversion is finished the **Write to CD** dialog appears on the screen. To start recording press the **Write** button. For more information on this dialog see ['Write to CD' dialog](#).

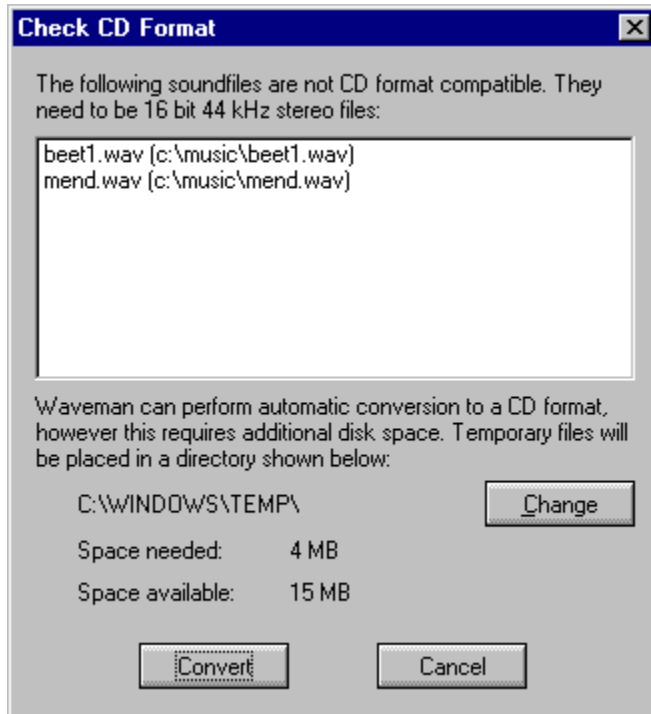
Adjusting silence gaps between audio tracks

Wave Manager allows you to specify the amount of silence due to be inserted after a given CD track. In order to do this, follow the steps below:

1. Select the playlist item and click the **Info** button (or double-click the item) to evoke the **File info** dialog.
2. Modify the value displayed in the edit box entitled "Gap time after this track in seconds" (anything between 0 and 30 seconds).
3. If you want this time to be identical for all tracks, click the **Apply to all** button.
4. Click **OK**.

'Check CD Format' dialog

This dialog appears on the screen if any of the files requires conversion to a CD format. To get help on a particular dialog item, click on it.



List of all files that are not CD format compatible.

Specifies a temporary directory created for the purpose of soundfile conversion.

Allows one to change the temporary directory.

Displays the amount of disk space (in megabytes) needed to store all temporary files.

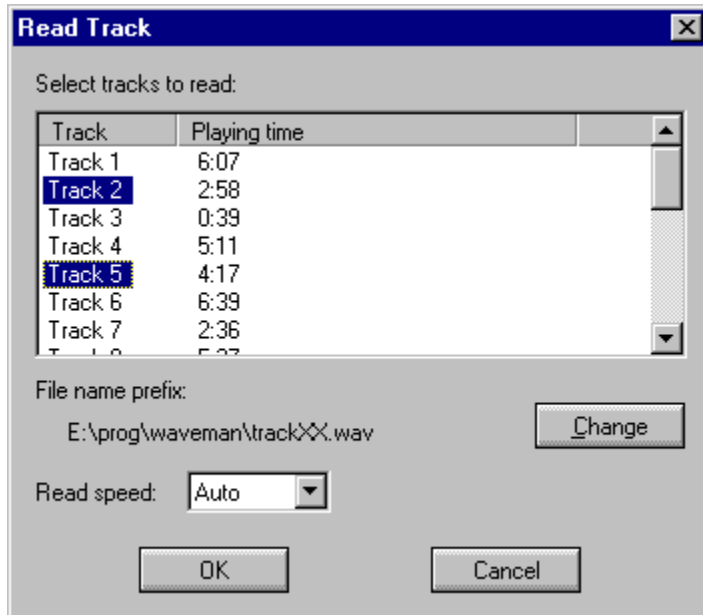
Displays the amount of disk space (in megabytes) available in the currently specified temporary directory.

Initializes the soundfile conversion.

Closes the dialog and cancels recording to a CD.

'Read track' dialog

This dialog allows you to read tracks from an audio CD. Since a digital (i.e., lossless) transmission is used, copying will not cause any degradation of the sound quality typical of analog systems. To get help on a particular dialog item, click on it.



Allows one to select CD tracks to be read from a CD. Several tracks may be selected by means of depressing the `CTRL` key and clicking the corresponding items with the left mouse button.

Shows the name(s) under which the selected audio tracks will be saved. Each name consists of an user-defined prefix and a track number.

Allows one to change the prefix part of the name(s) under which the selected tracks will be saved.

Specifies the reading speed. Be aware that in some of the available CD-R devices the error-correction mechanism is switched off at higher reading speeds - in cases like that disk surface damages or dust may introduce audible clicks into the transmitted audio material if you don't choose the lowest speed.

Starts reading.

Closes the dialog box and aborts reading.

'Read track' Command (List Menu)

This command allows you to read tracks from an audio CD. Since a digital (i.e., lossless) transmission is used, copying will not cause any degradation of the sound quality typical of analog systems.

Prior to using the **Read track** command insert in the CD-R drive the CD you want to read tracks from. Wave Manager will scan contents of a CD. Then the **Read track** dialog will appear on the screen, allowing you to select appropriate tracks. For more information on this dialog see ['Read track' dialog](#).

NOTICE

The **Read track** command will remain inactive if the CD-R hardware is not installed on your computer.

Reading tracks from an audio CD

To read a track from an audio CD do the following:

1. Insert an audio CD into a CD-R drive.
2. Select tracks you want to read using the **Read track** dialog (see 'Read track' dialog).
3. Select the reading speed.
4. Click **OK**.

Tracks will be stored in separate soundfiles called `<name[xy].wav>` where *name* is an user-defined prefix (which can be specified in the **Read track** dialog) and *[xy]* denotes a two-digit track number.

Reading tracks from an audio CD

Wave Manager allows you to read tracks from an audio CD. Since a digital (i.e., lossless) transmission is used, copying does not cause any degradation of the sound quality typical of analog systems.

To read a track from an audio CD do the following:

1. Insert an audio CD into a CD-R drive.
2. Select a track you want to read using the 'Read track' dialog (available after choosing the **Read track** command from the **List** menu). Several tracks may be selected by means of depressing the CTRL key and clicking the corresponding items with the left mouse button.
3. Select the reading speed. Be aware that in some of the available CD-R devices the error-correction mechanism is switched off at higher reading speeds - in cases like that disk surface damages or dust may introduce audible clicks into the transmitted audio material if you don't choose the lowest speed.
4. Choose the name(s) under which the selected audio tracks will be saved.
5. Click **OK**.

Tracks are stored in separate soundfiles called <name[xy].wav> where *name* is an user-defined prefix (specified in the **Read track** dialog) and *[xy]* denotes a two-digit track number.

