

# **iRemember®**

**Version 2.0**

**May, 2000**

**Serac Software**

<http://www.seracsoftware.com/>  
[info@seracsoftware.com](mailto:info@seracsoftware.com)

Copyright ©1998-2000 by Blake Ward.  
iRemember® is a registered trademark of Blake Ward.

---

# Table of Contents

---

<b>1 INTRODUCTION.....</b>	<b>4</b>
1.1 WHAT IS IREMEMBER AND HOW DO I USE IT?.....	4
1.2 REQUIREMENTS AND COMPATIBILITY .....	5
1.3 REGISTERING IREMEMBER .....	5
1.4 CREDITS .....	6
<b>2 SEARCHING WITH IREMEMBER .....</b>	<b>7</b>
2.1 WHAT GETS INDEXED AND WHEN IS IT INDEXED?.....	7
2.2 SEARCHING FOR A PAGE YOU VISITED .....	8
2.3 FIND SIMILAR .....	9
2.4 VIEWING YOUR BROWSING HISTORY .....	9
2.5 VIEWING PAGES BY WEB SITE.....	9
2.6 WHAT ABOUT MISSING WEB PAGES?.....	10
<b>3 IREMEMBER ADMINISTRATION .....</b>	<b>11</b>
3.1 DELETING OLD PAGES.....	11
3.2 DELETING SELECTED PAGES .....	12
3.3 COMPRESSING THE INDEX .....	12
3.4 CHECKING THE INDEX FOR CORRUPTION .....	13
3.5 REPAIRING A DAMAGED INDEX.....	14
3.6 IMPORTING AN INDEX .....	14
3.7 SCAN FOR MISSING PAGES.....	15
3.8 PREFERENCES .....	16
3.9 MOVING THE INDEX TO ANOTHER VOLUME .....	19
3.10 KEEPING A BACKUP OF YOUR INDEX.....	19
<b>4 GLOBAL IREMEMBER MENU.....</b>	<b>21</b>
4.1 SWITCH TO IREMEMBER .....	21
4.2 IREMEMBER – FIND SELECTION .....	21
4.3 IREMEMBER – FIND SIMILAR PAGES .....	22
4.4 SWITCH TO SHERLOCK.....	22
4.5 SHERLOCK – FIND FILE.....	22
4.6 SHERLOCK – FIND BY CONTENT.....	22
4.7 SHERLOCK – FIND ON INTERNET.....	22
4.8 SHERLOCK – FIND SELECTION .....	23
4.9 SHERLOCK – FIND SIMILAR PAGES.....	23
<b>5 INSTALLING IREMEMBER.....</b>	<b>24</b>
5.1 THE INSTALLATION PROCESS.....	24
5.2 IREMEMBERAUTOSTART .....	25
5.3 OTAUTOPUSHSUPPORT .....	25
5.4 _IREMEMBER EXTENSION .....	25
5.5 _IREMEMBER OT MODULE.....	25

<b>6 REGISTERING IREMEMBER.....</b>	<b>26</b>
6.1 WHO IS KAGI SOFTWARE?.....	26
6.2 ORDERING ON-LINE.....	27
6.3 "REGISTER IREMEMBER" APPLICATION .....	27
6.4 ORDERING BY PHONE .....	28
6.5 ENTERING YOUR REGISTRATION KEY CODE.....	28
6.6 CHANGING REGISTRATION INFORMATION.....	28
<b>7 CONTACTING US.....</b>	<b>29</b>
7.1 REPORTING BUGS.....	29
7.2 COMMENTS AND SUGGESTIONS.....	29
<b>8 SOFTWARE LICENSE.....</b>	<b>30</b>

---

# 1 Introduction

---

If you don't like to read manuals, you can probably use iRemember very successfully without reading any of this manual. However, if you'd like to know a little more about iRemember, how to register, etc., then this chapter provides a quick overview. You can probably wait to read the other chapters until you actually have more in depth questions about why or how iRemember is doing something.

## 1.1 What is iRemember and How Do I Use It?

---

Forget to bookmark that great web page and now you can't find it? Do you use Netscape Navigator and wish it kept your browsing history? Use more than one browser and wish there was one place you could go to find any page you visited? iRemember is a revolutionary new application for keeping track of your web browsing history that solves all of these problems. Using Apple's Information Access Toolkit (AIAT is also used by Sherlock), iRemember indexes all of the words in every web page you visit. Later, when you want to revisit any page that you've ever visited in the past, you only need to type in a couple of words that describe that page to quickly return to it. It also keeps a history of all of the pages that you visited in chronological order, so that you can also easily look for a web page you visited on a particular day.

Using iRemember is easy. After running the installer (which you've already done if you're reading this), iRemember will be set up to automatically launch anytime you launch a web browser. As you surf the web, iRemember will quietly index the content of all of the pages that you visit in background. When you want to search for a page that you once visited, just switch to the iRemember application using the special menu added to all applications (which can be turned off in the preferences). Type a few words into the search window and click the Search button. A results window will appear listing matches from most relevant to least relevant. Select any item in the results list to see which search words were matched in that page, double-click on any item in the results list to go to it in your browser. If you hold down the option key while double-clicking, the results window will be closed before iRemember switches to the browser and takes you to the selected page. If you want to see a list of all the pages you've visited, select 'History' from the File menu. You can expand any day and select an item to see more details about that page. Double-clicking on a page visit in the list will take you to that page in your browser.

That's all there is to it! Really. You now know as much as you need to use iRemember. Once you've visited lots of pages over the course of a few weeks, the searching and history will quickly become indispensable. Remember, the longer you use iRemember, the more it knows about and the more useful it becomes...

## 1.2 Requirements and Compatibility

---

iRemember has been designed to work with the widest possible range of Macintosh System versions and web browsers. It should work with any version of the MacOS from System 7.1 on, including MacOS 9.0. iRemember also fully supports both older 68K Macintoshes and all PowerPC-based Macs (including iMacs and the new G4s) – just make sure you download the correct installer for your Macintosh. Note that if you're still using MacOS 7.1, you should consider upgrading to 7.5, which is free from Apple (take a look on their web site).

iRemember should work with any web browser, including all versions of Netscape Navigator and Internet Explorer, and the new iCab and MacOpera browsers when they become available. **iRemember also works fine with all versions of America Online**, whether you use the built-in web browser or AOL Link and a standard web browser.

Since iRemember is used in conjunction with Internet access, it also requires either MacTCP or OpenTransport (1.1.1 or later) be installed.

The iRemember application is set up to prefer 1900K of memory. If you expect to keep a lot of searches open simultaneously you might want to increase its memory allocation in the Get Info dialog box. The extensions installed by iRemember use very little memory and won't slow your computer down.

## 1.3 Registering iRemember

---

iRemember is distributed as "shareware". This means that unlike commercial software, you don't need to pay for it "up front" and then decide if it's useful. Instead, it is freely distributed via the Internet and on CD-ROM collections as a fully functional application that you can try before you decide to buy. If you find it useful, you're expected to pay the modest fee of \$25. To encourage you to register your copy of iRemember, after you have used it for 30 days (it only counts the days you actually use it), iRemember will stop indexing new pages that you visit. After the 30 days you can still use all of the other features of iRemember, including searching the pages you've already indexed, but new pages won't be added to the index until you've entered the key code you receive upon registering.

We use Kagi Software to handle payments and registration is easy via a secure web site, email, fax or physical mail. Simply select the "Register iRemember" menu item, run the enclosed Register application, or go directly to the on-line ordering page at:

**<http://order.kagi.com/?WB&S>**

See the **Registering iRemember** section at the end of this manual for more details. iRemember is commercial quality software that represents hundreds of hours of development time. If you find it useful, please support the development of future versions of iRemember and other affordable software like it by paying the shareware fee.

## 1.4 Credits

---

The installer for iRemember was created using StuffIt InstallerMaker from Aladdin Systems, Inc.. For more information on StuffIt InstallerMaker contact:

Aladdin Systems  
165 Westridge Dr.  
Watsonville, CA 95076  
Voice: 831.761-6200  
Fax: 831.761-6209  
E-mail: [dev.sales@aladdinsys.com](mailto:dev.sales@aladdinsys.com)  
<http://www.aladdinsys.com>

iRemember uses the Apple Information Access Toolkit (AIAT), state of the art indexing and searching technology from the research labs of Apple Computer, Inc.

The new 32 bit icons for iRemember were created by Andreas C. Bauer ([bauer@eunet.at](mailto:bauer@eunet.at)).

---

## 2 Searching With iRemember

---

This chapter provides a little more detail on the indexing and searching capabilities of iRemember. If you're curious why a page doesn't seem to have been indexed, or why a search finds the things that it finds, this chapter should answer your questions.

### 2.1 What Gets Indexed and When Is It Indexed?

---

iRemember indexes all of the words in the web pages that you visit and then lets you search the indexed pages later. To understand how the search process works, it helps to first have an understanding of what iRemember does and doesn't index. While you can use iRemember without reading this section, if you ever wonder why a particular page didn't show up in a search or in the history window, read on to understand what's happening...

iRemember is able to see the web pages that you visit regardless of which browser you use by tapping into all of the HTTP communications between applications (typically browsers) and the network (HTTP is the protocol used to send web pages over the Internet). Every time it sees you visit a web page, it quickly copies all of the words in that page and later it indexes them in the background. This copying and indexing is extremely fast, so you shouldn't notice any delay when surfing the web.

When you ask to see a web page in your browser (either by typing in its address or by clicking on a link in another page), most browsers will first check to see if they have recently seen the exact same page and "cached" it. If it was cached, then the browser can quickly load the page without having to retrieve it over the network. This is both good and bad. It means that the page loads quickly, but it also means that iRemember never knows that you revisited that page because it can't see what's going on inside the browser -- it only watches what travels over the network. Therefore, while searches will always correctly find any page that you visited, the chronological history of pages visited can miss a few page visits and sometimes the count of the number of times you've visited a page can be low. If it's important to you that iRemember accurately count the number of visits to each page, you can change the caching settings in your browser to force your browser to always reload pages on every visit (the most effective way to do this is usually to set the size of the browser cache to 0K).

Because iRemember is trying to index web pages in the background without impacting your web browsing, it doesn't usually index pages the moment you see them. Instead, it usually waits and adds the page to the history list and indexes only after you leave that page and go to another page or quit your browser. Since you usually won't want to search for a page that you just looked at, this delayed indexing shouldn't make any difference.

There is one more delay that you should be aware of. After processing the words in a web page, it actually takes a bit of effort to fully incorporate those words into the data structures that are used for an actual search. Since iRemember tries to be as unobtrusive as possible, it only updates the search data structures at the moment that you perform a search and then

only if at least 10 minutes have gone by since the last update. This means that if you visit a web page and then immediately do a search that should find that page, it might not actually show up in the search results. Since you aren't very likely to be searching for pages that you just visited a couple of minutes earlier, it was felt that this lag time was a reasonable trade-off rather than making every search wait for the data to be updated. Note that after about 10 minutes the pages always show up in searches and anytime you quit and relaunch iRemember then everything is also updated immediately at that time.

When iRemember indexes web pages, it also tries to throw away words that aren't likely to be useful in a later search. In particular, it throws away very common words (e.g. "and", "to", etc.) and HTML keywords that are part of every web page (since searching on them would just return everything – not very useful). It also throws away short words and short numbers. You can set preferences to indicate what you want it to consider short. By default, words with less than 4 characters and numbers with less than 5 digits are discarded.

## 2.2 Searching for a Page You Visited

---

To search for a web page that you once visited, just type a few words that probably appeared in that web page and click the Search button. iRemember will look through the indexed pages and try to find the pages that best match the words that you entered. It presents them in a list with what it thinks are the best matches at the top. This is much like Internet search engines, and if you've used them much, then you know that the better the words you choose, the better the search results.

Here are a few tips for optimal searching:

1. **Use several words.** If you only give iRemember one word to work with, then it has no way to distinguish between all the pages that contain that word. If you use several words that should be in the page you're looking for, iRemember can show you the pages that match the most words from your list.
2. **Use fairly unusual words.** Use words will be in the page(s) you're looking for, but aren't too likely to be on other pages. For instance, if you were searching for the iRemember web page that you had once visited, "iRemember" would be a good word to search for, but "Macintosh" or "software" would be bad choices because they probably appear in a lot of pages that have nothing to do with iRemember.
3. **Don't use words that aren't indexed.** As was mentioned above, iRemember doesn't index very short words, very common words (e.g. "and") or the HTML keywords that appear in every web page. Therefore, if you use these ignored words in a search you aren't likely to find anything.

Once you have the results of a search, you can keep that window around as long as you like. When you do another search, iRemember will create a new window. To go to a page that you see in the results list, just double-click on it and iRemember will ask your browser to load that page. If you want the results window to close when you go to the page, just hold down the option key while double-clicking.



## 2.3 Find Similar

---

If you see a web page in the results list (or the History or Web Site windows), that is more or less what you wanted, you can select it and select the Find Similar command from the Page menu. This will create a new Search Results window that lists other indexed web pages that seem to be similar to the one you selected. This can be a very quick way to collect together all of the indexed pages about a particular topic.

## 2.4 Viewing Your Browsing History

---

In addition to searching through all of the web pages that you've ever visited, iRemember also provides you with a list of the page visits from most recent to least recent. Select the **History of Page Visits** command from the File menu to create a History window or bring it to the front if it already exists.

When first opened, the History window lists all of the dates that you visited web pages (while iRemember was running). If you click on the triangle or double-click anywhere over the date, it will expand to reveal all of the actual page visits. You can expand all of the dates at once by selected the **Expand all Dates** command from the **Page** menu.

When you select a single page visit, you'll see more information about that web page at the bottom of the window. The keywords that are listed for the selected page are words that either occur frequently in the web page, or seem to fairly uniquely identify the page because they occur in it and in very few other pages. (In some sense, the web page keywords are the reverse of a search: if you typed all of the words listed into the search window, that page would very likely come up at the top of the list of search results.)

As mentioned in section 2.1, iRemember only indexes and counts visits to web pages when it sees them accessed. Since browsers can retrieve web pages from their internal cache if you've visited them recently, this sometimes means that iRemember's count of total page visits or record of the last time the page was visited could be slightly off.

Just like the Search Results window, you can double-click on a displayed page to go to it in your browser. Selecting a page and choosing the Find Similar command from the Page menu will create a new Search Results window with a list of pages that iRemember thinks are similar to the one selected.

You can also select several pages at once and select the **Open in Browser** command from the **Page** menu to open several pages all at the same time in separate windows in your browser.

## 2.5 Viewing Pages by Web Site

---

In addition to searching through all of the web pages that you've ever visited, iRemember also provides you with a list of the pages you've visited organized by web site. Select the **Pages By Web Site** command from the File menu to create a new window or bring it to the front if it already exists.

When first opened, the Web Pages by URL window lists all of the web sites that you've visited (while iRemember was running). If you click on the triangle or double-click anywhere over a web site, it will expand to reveal all of the actual pages that were visited at

that site. You can expand all of the dates at once by selected the **Expand all Sites** command from the **Page** menu.

When you select a single page, you'll see more information about that web page at the bottom of the window. The keywords that are listed for the selected page are words that either occur frequently in the web page, or seem to fairly uniquely identify the page because they occur in it and in very few other pages. (In some sense, the web page keywords are the reverse of a search: if you typed all of the words listed into the search window, that page would very likely come up at the top of the list of search results.)

As mentioned in section 2.1, iRemember only indexes and counts visits to web pages when it sees them accessed. Since browsers can retrieve web pages from their internal cache if you've visited them recently, this sometimes means that iRemember's count of total page visits or record of the last time the page was visited could be slightly off.

Just like the Search Results window, you can double-click on a displayed page to go to it in your browser. Selecting a page and choosing the Find Similar command from the Page menu will create a new Search Results window with a list of pages that iRemember thinks are similar to the one selected.

You can also select several pages or whole web sites and select the **Open in Browser** command from the **Page** menu to open several pages all at the same time in separate windows in your browser.

## 2.6 What About Missing Web Pages?

---

If there's one thing that you can count on about the Internet, it's that it is constantly changing. All too often the page you visited last week or last month has moved or just plain disappeared. Just like searches that you perform using the Internet search engines (like Excite or Infoseek), iRemember will sometimes include pages in the results list that no longer exist. When you double-click on a page that is no longer available, you'll just get an error in your browser and you can simply try another page from the results list.

iRemember will also scan through all of the pages in its index and check to see if they're still available. If the pages have been missing for several days, you can then have iRemember delete all of the missing pages so that they no longer clutter up your searches. See the "Scanning For Missing Pages" section in the Administration chapter for more information on this feature.

---

## 3 iRemember Administration

---

This chapter describes some of the maintenance operations that you can perform on the index and some of the preferences that you can set that change how iRemember indexes pages. You can successfully use iRemember for years without ever reading this chapter, but if you decide that you want to fine tune iRemember's behavior or you encounter any problems, this chapter provides a thorough description of the various administrative commands.

### 3.1 Deleting Old Pages

---

Over time you may find that the iRemember Index file in the Preferences folder has begun to get quite large and you might want to get rid of some of the older web pages in the index (it typically grows by an average of about 2.5K for each web page indexed). The **Delete Old Pages** command in the **Utilities** menu will let you do this.

Since most users have reasonably large hard disks any more and since even an active Internet user is unlikely to add more than a couple of megabytes to the index size in a year, we strongly recommend not deleting old pages from the index. After all, a big part of iRemember's usefulness is being able to find a web page that you vaguely remember visiting a long time ago with a quick search for a few words from that page. If you keep deleting all of the old pages, you won't give iRemember a chance to do its thing.

The **Delete Old Pages** command lets you delete pages *that were last visited* prior to a given date. When you open the **Pages by Web Site** window you can also select individual pages or web sites and delete them. You can also ask iRemember to scan all of the indexed pages to see if they still exist so that you can delete old web pages that have disappeared from the Internet (see the next section).

When you select the Delete Old Pages command, the following dialog box comes up:



For convenience, it defaults to deleting one month's web pages by defaulting to a date one month after the first page visit stored in the index. Select a date and iRemember will delete all of the pages that you last visited before that date. In other words, if you visited a page in

May and picked a date in June, that page would be removed from the index and would no longer show up in searches *provided you hadn't also revisited that same page some other time after the date that you picked.*

After you select a date and click the OK button, iRemember will give you one more chance to change your mind. The Delete Old Pages command cannot be undone, so make sure you actually want to remove the pages forever before proceeding. When you delete a page, iRemember will also delete any references to the page from the History list, so don't delete a page if you want to retain any record of ever having visited it.

After deleting pages, they will no longer show up in any windows or among any search results, but they still occupy space on your hard disk. To actually shrink the size of your index file and free up space on your hard disk, you must also compress the index (see the **Compressing the Index** section of this chapter).

## 3.2 Deleting Selected Pages

---

In addition to deleting old pages, you can also delete individual web pages or all of the pages from a particular web site. First, select the **Pages by Web Site** command from the **File** menu to open the window that lists all of the pages you've visited organized by web site. Now either select one or more web sites, or expand some web sites so that you can select individual pages. With one or more pages selected, choose the **Delete Page(s)** command from the **Page** menu.

After deleting pages, they will no longer show up in any windows or among any search results, but they still occupy space on your hard disk. To actually shrink the size of your index file and free up space on your hard disk, you must also compress the index (see the **Compressing the Index** section of this chapter).

## 3.3 Compressing the Index

---

Over time as you delete pages from the index (or revisit pages since iRemember deletes the old version of the page from the index and then adds the new one), the index will tend to grow larger with unused information from deleted pages. To get rid of this deleted information and shrink the size of the "iRemember Index" file in the Preferences folder, you will periodically want to compress the index.

To begin an index compression, select the **Compress Index** command from the **Utilities** menu. Compressing the index can take a long time, perhaps even an hour or more depending on the speed of your Macintosh, the size of your index and how long it's been since you last compressed the index. Therefore, you should choose a time for compression when you can leave your Macintosh running for a fairly long time. Note that you can still work in other applications during the compression, but you can't use any other iRemember commands or quit.

If the power should fail or your machine should crash during the compression phase, iRemember is very good at preserving its state and when you run it again, the index should be the way it was before Compress Index command started. If you have repeated problems

during compress, you'll probably want to repair the index by creating a new one and importing the contents of the old, uncompressed index (see the **Repairing a Damaged Index** section for more information).

Of course, a lot of things beyond our control can happen so we can't guarantee that the index will survive crashes or power failures. The best general advice that anyone can give you is to backup your important information frequently and to more than one location. The iRemember Index in the Preferences folder is part of that important information and so you should keep regular backups of it too.

### 3.4 Checking the Index for Corruption

---

In order to seamlessly index the web pages that you visit, iRemember keeps its index file any time you have a browser running. For many users that means that the index file is almost always open. While iRemember is very careful to protect the integrity of its index even when it or another application should happen to crash, the fact that the index is always open leaves it vulnerable to damage from any buggy application. For that reason, you should make regular backups of the index just as you would any other important file. Provided you've been keeping regular backups of the index file, you can always go back to an earlier version if iRemember complains that the index file has been damaged.

If iRemember ever crashes unexpectedly or you suspect that it is behaving in an unusual way, the **Check Index** command from the **Utilities** menu will verify that the index has not been damaged in any way. The Check Index command scans through the index several times looking at the information stored in several different ways in an attempt to find any inconsistencies in the index. This can take a long time, but you can cancel the command at any time by simply holding down the command key and pressing the period (".") key.

If the scan completes without reporting any errors, your index is probably fine, although there is always a small chance that this command might be unable to find some very unusual types of damage. If you still suspect that something is wrong with your index, you can always follow the procedure in the next section to repair a damaged index.

### 3.5 Repairing a Damaged Index

---

If iRemember ever complains that your index may be damaged, or the **Check Index** command reports damage, you'll need to get rid of the damaged index. The easiest way to do this is to simply quit iRemember if its running, and then throw away the file called "iRemember Index" from the Preferences folder. When iRemember is launched again, it notice that the index is gone and make a new empty index. Of course, this is less than ideal. If you just throw away the damaged index, you'll be starting all over with no browsing history to search! To solve this problem, iRemember lets you safely import the contents of your damaged index into the new, undamaged index so that you won't lose any browsing history.

Note: if you've been making regular backups of the iRemember Index (and you should be!), you can also use any of the old backups as the source for the import.

To repair a damaged index, proceed as follows:

1. If iRemember is running, quit first. If iRemember or another application actually crashed, you should restart your Macintosh before proceeding.
2. Move the file called "iRemember Index" from the Preferences folder to any other location. Remember where you moved it, you'll have to select it later.
3. Launch iRemember. The Search window should say that there are currently "0 pages indexed". When you moved the index file out of the Preferences folder, iRemember created a new empty one.
4. Select the **Import Index...** command from the **Utilities** menu. A standard file dialog will appear – navigate to the damaged index file that you moved earlier and select it.
5. iRemember will go through the damaged index and copy across all of the web pages, indexed words and browsing history. This can take quite a while for large indices and also uses a fair amount of memory. (See the next section if you need more information on importing.)
6. That's it! Provided the damage to the index wasn't too severe, you should have all the pages and browsing history in your new index.

### 3.6 Importing an Index

---

As described above, you can create a new index and then import all of the pages from a damaged index in order to repair it. However, that's just one reason that you might want to import an index. If you use more than one Macintosh to surf the Internet (e.g. one at work and one at home in the evenings, or a desktop Macintosh and a Powerbook), then you can use the **Import Index...** command to merge all of your indices so that you have all of your browsing history available to you on both machines regardless of where you did the original surfing.

As an example, to bring your surfing history home from work, go through the following steps:

1. Copy the **iRemember Index** file from the Preferences folder on your work Macintosh to a ZIP cartridge or portable hard disk, or email it to yourself at home, etc.
2. At home, launch iRemember.
3. Select the **Import Index...** command from the **Utilities** menu.
4. Navigate to the index file that you brought home from work and select it.
5. iRemember will go through index from work and import any web pages that either aren't already in your home index or are newer than the ones in your home index. It will also import dates and times of any visits that aren't already in your history list.
6. Quit iRemember. If you copy the iRemember Index file from the Preferences folder back to your ZIP cartridge or portable hard disk, you can take it back to the office so that you'll have the combined browsing history there too.

When importing an index, iRemember is careful to only import page content or accesses that aren't already in your index. This means that you can import the same index twice and nothing will be added the second time. In particular, you can import an index, use it for some more browsing, and then import it again to get just the new page visits.

Importing an index can take a while and require a more memory than iRemember normally uses. If iRemember runs out of memory during the import, you may have to temporarily increase the memory allocated to it and then try the import again. To increase the memory allocated to iRemember, select the iRemember application in the Finder and choose **Get Info...** from the **File** menu. Select Memory from the popup menu if necessary and then enter a larger number for the Preferred Memory Size. After you're finished importing, you can lower the memory allocation if desired.

### 3.7 Scan For Missing Pages

---

If there's one thing that you can count on about the Internet, it's that it is constantly changing. All too often the page you visited last week or last month has moved or just plain disappeared. Just like searches that you perform using the Internet search engines (like Excite or Infoseek), iRemember will sometimes include pages in the results list that no longer exist. After you've been using iRemember long enough for the number of moved or missing pages to be noticeable, iRemember provides a way to automatically find and delete missing pages.

The **Scan For Missing Pages** command goes through all of the pages in the index and attempts to access each page over the Internet. There are many reasons that a page might be inaccessible, including anything from a busy phone line for your dialup modem to a web server that is unavailable for maintenance. Therefore, iRemember lets you specify the number of *distinct* days that a page must be missing before being deleted. For instance, if you set the preference to 3 days, then you would have to choose the **Scan For Missing Pages** command on three separate days and a page would have to be missing on every one of those days before it would be eligible for deletion. Note: If you set the preference for 3 days, you have to run the scan on three *different* days for pages to be marked for deletion; running it three times on the same day doesn't count.

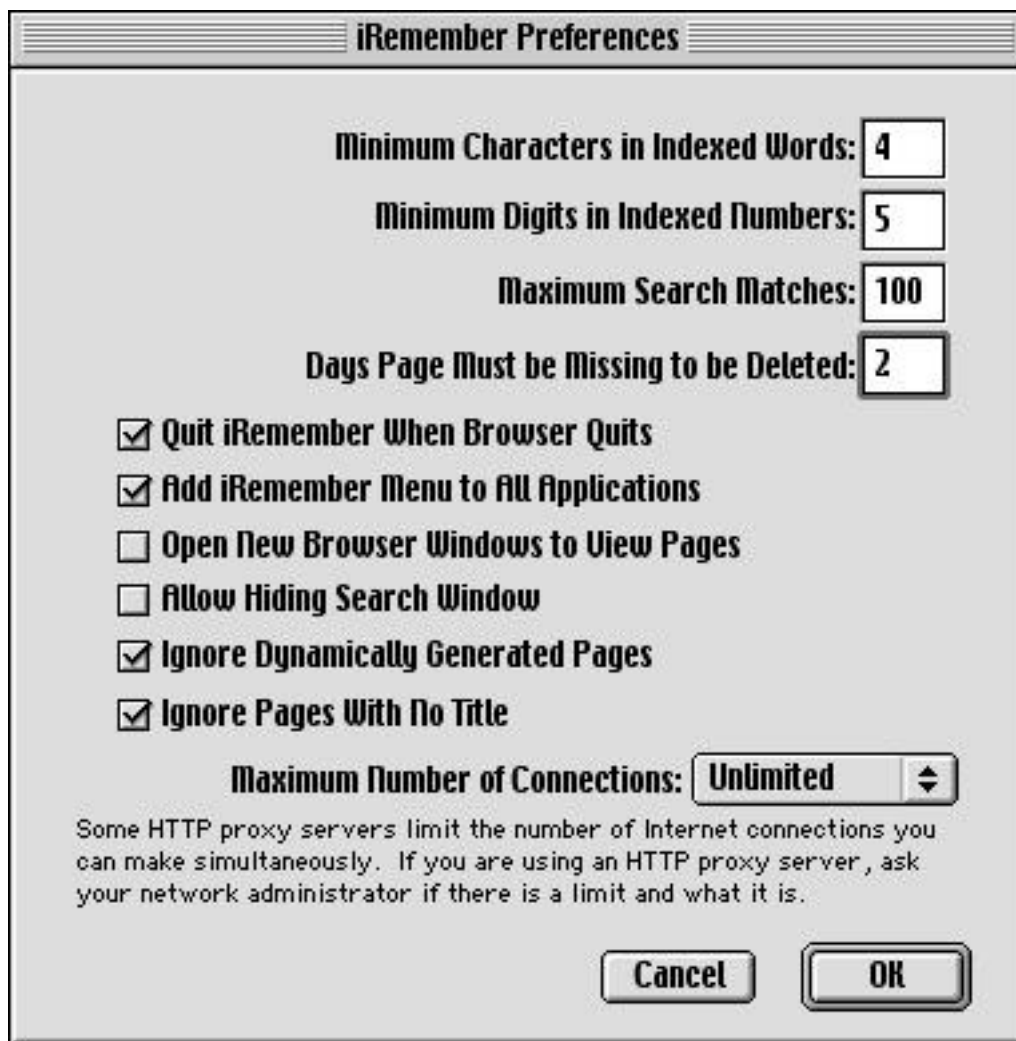
After scanning the index, iRemember marks pages in the **Pages by Web Site** window to indicate which pages have been missing at least once and which pages have been missing

enough times to be eligible for deletion. Pages marked with a yellow triangle have been missing on at least one scan of the index, but haven't been missing as many times as the preference that you've set in the Preferences dialog. Pages that have been missing enough times to be eligible for deletion are marked with a red stop sign.

To actually delete the pages marked for deletion, select the **Delete Missing Pages** command from the **Utilities** menu. This operation cannot be undone, so you might want to review which pages have been marked before taking this step. As with the Delete Old Pages command, this command removes the pages from search results and the History window, but it doesn't reuse the space they occupied until you select the Compact Index command.

### 3.8 Preferences

---



The **Preferences** command under the **Edit** menu let's you modify iRemember's behavior in a few key ways:



### **Minimum Characters in Indexed Words**

When iRemember indexes the words in a web page that you've visited it discards some of the words on the page because they aren't very useful for searching. It has a built in list of words that it doesn't index (including things like "and" and HTML keywords like "title" that appear in every page). It also discards very short words. This preference lets you set the minimum number of characters that must be in a word before it's indexed. When you change this setting, it applies to all future indexing, but won't have any effect on pages that have already been indexed.

### **Minimum Digits in Indexed Numbers**

When iRemember indexes the words in a web page that you've visited it discards some of the numbers on the page because they aren't very useful for searching. If a word (the characters between whitespace) contains only digits, then this preference lets you set the minimum number of digits that must be in the number before it's indexed. You'll probably want to set this to be at least four or five because smaller numbers occur so frequently on pages that they aren't particularly useful for searching. When you change this setting, it applies to all future indexing, but won't have any effect on pages that have already been indexed.

### **Maximum Search Matches**

When you perform a search in iRemember it looks at all of the pages that it's indexed and returns a list of the "best" matches to your query. This preference sets the maximum number of matches that should be returned for any search. If you set this to a large number, iRemember will show you more matched pages, but this won't necessarily be helpful. Just like Internet search web sites, the best matches to a search are frequently in the first few matched pages and the matches toward the end of the list are so poor that they're of little use.

### **Days Page Must Be Missing To Be Deleted**

When you want to delete pages that are no longer accessible on the Internet, you need to have iRemember scan all of the pages in its index and the pages. This setting determines how many distinct days the page must be missing to be eligible for deletion. For instance, if you set the preference to 3 days, then you would have to choose the **Scan For Missing Pages** command on three separate days and a page would have to be missing on every one of those days before it would be eligible for deletion. Note: If you set the preference for 3 days, you have to run the scan on three *different* days for pages to be marked for deletion; running it three times on the same day doesn't count. To avoid deleting pages that are just temporarily unavailable, we recommend setting this value to at least 2.

### **Quit iRemember When Browser Quits**

For convenience, iRemember automatically launches when you launch a browser. If this item is selected, then when you quit your browser, iRemember will also quit. If you expect to be using iRemember again soon, or you frequently switch from one browser to another, unchecking this option will ensure that iRemember is always running and quickly available.

### **Add iRemember Menu to all Applications**

iRemember can add a special menu to the menu bar in all applications to make it easy to switch to iRemember. The menu displays as a small iRemember icon and has commands to switch to iRemember and if it's available, to switch to each of Sherlock's search tabs. Future versions of iRemember will add additional commands to this menu to make it easy to search for pages similar to the currently displayed web page. If you don't want the iRemember menu to appear in the menu bar of all applications, uncheck this preference and restart your Macintosh for the change to take effect.

### **Open New Browser Windows to View Pages**

When you double-click on a result, iRemember opens that page in the browser you currently have running or your preferred browser. If this option is checked, then iRemember will open the page in a new window rather than replace the contents of the frontmost window in the browser.

### **Allow Hiding Search Window**

If this option is checked then the Search Window will have a close box, letting you close the window if you want. If you prefer that iRemember always have the Search window open (which makes it easier to see when you've switched to iRemember), then uncheck this option and the Search Window will not have a close box, making it impossible to accidentally close it. If you do close the Search Window, selecting New Search from the File menu will open it again.

### **Ignore Dynamically Generated Pages**

When this option is checked, iRemember will ignore pages that have a "?" in their URL. Typically these pages were result of a search or filling out a field or form. Since they were dynamically created in response to some values you entered, they are sometimes less interesting to index and search later. To decide whether you want to ignore dynamically generated pages, look through the pages in the History Window. If the pages with "?" in their URLs don't seem interesting to you, then check this option.

### **Ignore Pages With No Title**

When iRemember indexes the web pages that you've visited it can be told to ignore pages that don't have a title. Most interesting pages will have titles, so they still get indexed even if you check this preference. On the other hand, things like banner ads, while they appear to be just part of a page, are often implemented as separate pages. Since these separate pages don't have titles, this preference gives you a way to skip those internal pages that aren't useful for searching later. You might want to uncheck this preference if you find that you visit web sites that use frames and some of the frames aren't being indexed. Each frame is actually implemented as a separate web page and sometimes they don't have titles, which will cause iRemember to ignore them if this preference is set. Again, changing this preference affects future pages that you visit, but doesn't affect pages that have already been indexed.

### **Maximum Number of Connections**

When iRemember is scanning all of the pages in its index to see if they're still accessible on the Internet it can do this faster by looking for several pages at the same time (e.g. making connections to several servers on the Internet at the same time). This setting determines the maximum number of simultaneous connections that iRemember will attempt to make. Unless you're using iRemember in a setting where a proxy server or firewall limits your connections, you can just ignore this setting and leave it at "Unlimited".

### 3.9 Moving the Index to Another Volume

---

By default, iRemember stores its index in the Preferences folder. Normally this is exactly what you want to have happen and there will be no reason to change this behavior. However, if you have more than one hard disk and you have limited space on the disk that contains your System folder, then you might eventually want to move the index to another hard disk with more free space. While it's not as convenient as it might be, iRemember does support moving the index file. Make sure that you perform the following steps carefully:

1. You will need to run iRemember at least once so that an index has already been created in the Preferences folder.
2. Quit iRemember.
3. Copy the file called **iRemember Index** from the Preferences folder to the hard disk where you want it to be located. If you've been using iRemember for a long time, the index could be quite large and this copy might take a while.
4. After you've finished copying the index file to another hard disk, move it from the Preferences folder to the Trash.
5. Make an alias to the new index file on the other hard disk (to make an alias, select the file and then choose the Make Alias command from the File menu). Move the alias file to the Preferences folder.
6. The alias file will probably have a name like "iRemember Index alias". Change it so that it is just called "iRemember Index". iRemember looks for a file of exactly this name in the Preferences folder. If that file happens to be an alias, it will follow it to the real file.

Note: If you use this technique to move the index file to another location, remember that when this manual mentions things like "moving the iRemember Index file out of the Preferences folder", you'll actually have to remove the alias from the Preferences folder and remember where the actual index file is located.

### 3.10 Keeping a Backup of Your Index

---

As you visit web pages, iRemember keeps an index of all of the words in the pages you've visited. Just like any other data that you might build up over time, the iRemember index is a valuable file that you wouldn't want to lose should something go wrong with your Macintosh. iRemember is very careful to protect the integrity of its index even when it or another application should happen to crash, but it can't protect the index from every possible disaster.

For that reason, you should make regular backups of the index just as you would any other important file. The index file is stored in the Preferences folder and to make a backup of it, you can simply quit iRemember and then make a copy of the file to another place on your hard disk, or better yet, periodically copy it to a completely different location like a ZIP disk, backup tape, writeable CD, etc.

If iRemember ever gives you an error message saying that the index is damaged, or crashes consistently when trying to use the index, then you can then restore the last copy of the index that you saved. At worst, you'll only lose the history of the pages visited since that backup was made and you might even be able to get that back by importing it from the damaged index file. iRemember looks for a file with the name "iRemember Index" in the Preferences folder, so when you want to restore a backup version of the index, make sure that it has that name or iRemember will just make a new index.

---

## 4 Global iRemember Menu

---

If you've checked the System-wide iRemember Menu option in the preferences, then iRemember installs a menu that is available from every application. Once you get used to using this menu, it will quickly become the only way you launch Sherlock! The iRemember menu looks like this:



### 4.1 Switch to iRemember

---

This command just makes iRemember the frontmost application. If iRemember wasn't already running, then it will be launched. If it was already running, it will come to the front with any windows open that it previously had open.

### 4.2 iRemember – Find Selection

---

This command is enabled when you have something selected in an application. It will initiate a search in iRemember using the text in the selection; iRemember will become the frontmost application and a new search results window will be created.

**The Find Selection command works by forcing the current application to copy the selection to the clipboard, replacing anything you might have already had in the clipboard!** If you already have something in the clipboard that you care about, make sure that you paste it somewhere before using this command. Since different applications don't always treat selections and the clipboard consistently, this command may not work correctly in every possible application. It also can't detect whether the selection actually contains any text until you actually choose this command so might not actually do anything if it can't find any text. For instance, the Find Selection command will be enabled if you select a picture, but probably won't actually initiate a search for you.

When you're searching for some selected text using this command, iRemember will search for pages that you've visited that match up to 32,000 characters of selected text (the larger the selection, the slower the search). If you use the **Find Selection** command for Sherlock, only the first 255 characters of the selection are actually used for the search (this is a limitation of Sherlock).

### 4.3 iRemember – Find Similar Pages

---

This command is enabled when you are currently viewing a web page in most web browsers. It will initiate a search in iRemember using the contents of the current web page as the search text. iRemember will become the frontmost application and a new search results window will be created.

When you're searching for similar pages using this command, iRemember will search for pages that you've visited that match up to 32,000 characters of current page's content (the larger the page, the slower the search). If you use the **Find Similar Pages** command for Sherlock, only the first 255 characters of the current page are actually used for the search (this is a limitation of Sherlock that we hope to work around soon).

### 4.4 Switch to Sherlock

---

This command just makes Sherlock the frontmost application. If Sherlock wasn't already running, then it will be launched. If it was already running, it will come to the front with the search tab or results window that was in front when it was previously the frontmost application. Since it requires Sherlock, this command will be disabled if you aren't running MacOS 8.5 or later.

### 4.5 Sherlock – Find File...

---

This command just makes Sherlock the frontmost application. If Sherlock wasn't already running, then it will be launched. If it was already running, it will come to the front with the Find Files option selected. This is just a convenient shortcut for switching to Sherlock to search for a file by name on your hard disk. Since it requires Sherlock, this command will be disabled if you aren't running MacOS 8.5 or later.

### 4.6 Sherlock – Find By Content...

---

This command just makes Sherlock the frontmost application. If Sherlock wasn't already running, then it will be launched. If it was already running, it will come to the front with the Find By Content tab selected. This is just a convenient shortcut for switching to Sherlock to search for a file on your hard disk by its content. Since it requires Sherlock, this command will be disabled if you aren't running MacOS 8.5 or later.

### 4.7 Sherlock – Find on Internet...

---

This command just makes Sherlock the frontmost application. If Sherlock wasn't already running, then it will be launched. If it was already running, it will come to the front with the Search Internet tab selected. This is just a convenient shortcut for quicking switching to

Sherlock to search for something on the Internet. Since it requires Sherlock, this command will be disabled if you aren't running MacOS 8.5 or later.

## 4.8 Sherlock – Find Selection

---

This command is enabled when you have something selected in an application. It will use Sherlock to search for the text in the selection. If Sherlock wasn't already running, it will be launched. Since this command uses the iRemember application to help control Sherlock, it will also be launched if it wasn't already running. Since it requires Sherlock, this command will be disabled if you aren't running MacOS 8.5 or later.

**The Find Selection command works by forcing the current application to copy the selection to the clipboard, replacing anything you might have already had in the clipboard!** If you already have something in the clipboard that you care about, make sure that you paste it somewhere before using this command. Since different applications don't always treat selections and the clipboard consistently, this command may not work correctly in every possible application. It also can't detect whether the selection actually contains any text until you actually choose this command so might not actually do anything if it can't find any text. For instance, the Find Selection command will be enabled if you select a picture, but probably won't actually initiate a search for you.

When you're searching for some selected text using this command, Sherlock currently only uses the first 255 characters of the selection for the search (this is a limitation of Sherlock that we hope to overcome soon). If you use the **Find Selection** command for iRemember, it will search for pages that you've visited that match up to 32,000 characters of selected text (the larger the selection, the slower the search).

## 4.9 Sherlock – Find Similar Pages

---

This command is enabled when you are currently viewing a web page in most web browsers. It will initiate a search in Sherlock using the contents of the current web page as the search text. Sherlock will become the frontmost application and a new search results window will be created. Since this command uses the iRemember application to help control Sherlock, it will also be launched if it wasn't already running. Since it requires Sherlock, this command will be disabled if you aren't running MacOS 8.5 or later.

When you're searching for similar pages using this command, Sherlock will only use the first 255 characters of the current page for the search (this is a limitation of Sherlock that we hope to work around in a future release). If you use the **Find Similar Pages** command for iRemember, it will search for pages that you've visited that match up to 32,000 characters of current page's content (the larger the page, the slower the search).

---

## 5 Installing iRemember

---

This chapter contains more details on the various components that are installed by the iRemember Installer. You don't need to know any of this to use iRemember, but if you can't understand what iRemember is doing or why it's doing something, then this chapter might hold the answer.

### 5.1 The Installation Process

---

When you run the iRemember Installer, several files are installed:

- In the Extensions folder in your System Folder
  - iRememberAutoStart (all Macs)
  - OT AutoPush Support (PowerPC-based Macs)
  - \_iRemember Extension (all Macs)
  - \_iRemember OT Module (PowerPC-based Macs)

- In the new iRemember Folder:
  - iRemember (the main application)
  - iRemember README
  - iRemember User's Manual (this file)
  - iRemember Software License

After you run iRemember for the first time, two files will be created in your preferences folder:

- iRemember Index
- iRemember Preferences

You can uninstall iRemember at any time by simply throwing all of these files into the trash or running the installer again and selecting 'Uninstall'.

The remainder of this chapter provides a brief description of what each of these components do. You don't need to understand their function to use iRemember, this is just a little more information for the curious...



## 5.2 iRememberAutoStart

---

iRememberAutoStart is a **very** tiny background application that simply watches to see if any browser is running and starts then launches iRemember. When it sees the browser quit, it tells iRemember to quit too. To give you some control over when iRemember is running, if you explicitly quit iRemember after it was auto-launched, it won't be automatically relaunched. When iRememberAutoStart notices that you've deliberately quit iRemember, it won't relaunch it unless the browser is later quit and then started up again later. iRemember will work perfectly well without iRememberAutoStart installed, but it makes it easy to ensure that iRemember always gets a chance to index the web pages that you're visiting.

## 5.3 OTAutoPushSupport

---

This extension is supplied by Apple Computer to fix a shortcoming in Open Transport. The current version at the time this was written was 1.1.1, and it must be installed if you're using Open Transport or iRemember cannot index the web pages you visit. **This extension is also installed by several other Internet related applications, so you should be careful to only remove it if you're sure that iRemember was the only application to install it.** Even if you decide to remove iRemember from your system, there's no harm in leaving this extension installed. It uses very little memory and doesn't slow anything down.

## 5.4 \_iRemember Extension

---

This is the main extension for iRemember and it must be installed on both 68K and PowerPC Macs. It has an underscore in its name because it must load after the OTAutoPush Support extension. This extension sets up some scratch memory that is used to watch HTTP communications and communicate with the iRemember application. If you're using OpenTransport, then it also installs the \_iRemember OT Module into the TCP/IP stack. If you're using MacTCP, then it installs a patch to let iRemember catch http communications. \_iRemember Extension also adds the iRemember menu to all applications if that preference is checked. None of the changes made by this extension use very much memory or slow your computer down.

## 5.5 \_iRemember OT Module

---

This is an OpenTransport module, a standard mechanism for extending the functionality of OpenTransport. It must be stored in the extensions folder, but isn't an extension per se. The \_iRemember Extension actually installs it into OpenTransport, so it only works with the extension also present.

---

## 6 Registering iRemember

---

iRemember is distributed as "shareware". This means that unlike commercial software, you don't need to pay for it "up front" and then decide if it's useful. Instead, it is freely distributed via the internet and on CD-ROM collections as a fully functional application that you can try before you decide to buy. If you find it useful, you're expected to pay the modest fee of \$25. To encourage you to register your copy of iRemember, after you have used it for 30 days (it only counts the days you actually use it), iRemember will stop indexing new pages that you visit. After the 30 days you can still use all of the other features of iRemember, including searching the pages you've already indexed, but new pages won't be added to the index until you've entered the key code you receive upon registering.

We use Kagi Software to handle payments and registration is easy via a secure web site, email, fax or physical mail. Simply select the **Register iRemember** menu item, run the enclosed Register application, or go directly to the on-line ordering page at:

<http://order.kagi.com/?WB&S>

iRemember is commercial quality software that represents hundreds of hours of development and testing. If you find it useful, please support the development of future versions of iRemember and other affordable software like it by paying the shareware fee.

### 6.1 Who is Kagi Software?

---

Kagi Software (<http://www.kagi.com/>) is a payment processing company. They specialize in collecting registration fees and payments for thousands of shareware and commercial developers so that the developers can concentrate on what they do best – writing great software.

Kagi provides all of the infrastructure for processing orders via a web page, fax, email, phone or physical mail. They've provided trusted payment services for almost ten years, and make registering your copy of iRemember a quick, easy **and safe** process.

If you have any questions about your order, credit card charges, etc. you should contact Kagi Software ([support@kagi.com](mailto:support@kagi.com)). However, if you have any support questions about iRemember, you should contact Serac Software directly at [support@seracsoftware.com](mailto:support@seracsoftware.com) or by visiting our web site ([www.seracsoftware.com](http://www.seracsoftware.com)). Kagi Software only knows about payment processing, but can't answer questions about the software.

## 6.2 Ordering On-Line

---

The fastest way to register is using a credit card via the web. Kagi Software operates a secure web server where you can quickly register your copy of iRemember or any other Serac Software product:

**<http://order.kagi.com/?WB&S>**

If your browser doesn't support secure transactions, you can use the alternate server at:

**<http://order.kagi.com/?WB>**

If you don't have a credit card, or would prefer not to use it over the Internet, then...

## 6.3 "Register iRemember" Application

---

When iRemember was installed on your Macintosh, the iRemember Folder should have included a small application called "Register iRemember". You can use this application to create a registration form that you can send to Kagi by email, physical mail or fax. If you can't find this application, you can either reinstall iRemember, or visit our web site for a copy ([www.seracsoftware.com](http://www.seracsoftware.com)). If you want to register by fax, email or physical mail, you must use the form generated by this application to ensure your order isn't delayed and you receive the correct registration key for iRemember.

The Register iRemember application provides fields for entering all of the necessary information, selecting which products you're purchasing, etc. Once you've filled out all of the necessary information, click on one of the buttons as follows:

### **Print –**

Prints a hard copy of the registration form which you then fax or mail to Kagi Software at the following address:

Kagi  
1442-A Walnut Street PMB #392-WB  
Berkeley, California, 94709-1405  
USA

FAX: +1 510 652 6589

### **Copy –**

Places a copy of the registration form on the clipboard so that you can paste it into an email message to send to Kagi Software. This works with credit card purchases only (obviously) and your credit card number is scrambled to make it relatively safe. You'll need to email the order to:

[sales@kagi.com](mailto:sales@kagi.com)

#### Save –

Saves a copy of the registration form as a SimpleText document that you can print out or email later.

## 6.4 Ordering by Phone

---

Kagi is really set up to handle electronic orders, but they can also accept phone orders if that is the only way that you can place an order. You should be aware that there is a surcharge for placing an order by phone. You'll need the product code and other information from the registration form, so fill it out first, print it, and then make the call. Kagi orders are taken at:

+1 (510) 601-5244

## 6.5 Entering Your Registration Key Code

---

Once your order has been verified, a key code will be generated based on the name you gave in the registration and this code will be emailed to you at the email address you gave when registering. **In order to receive your key code so that you can complete the registration process and reactive iRemember it is extremely important that you provide a valid email address!** We need to know where to send your key code! Also, make sure that the name you use when registering is the one that you want to enter when registering iRemember.

Once you have received your key code, select the **Register iRemember** menu item in the **File** menu or click on the Register button in the About Box. Click on the **Enter Key** button in the dialog box that appears. Now enter the exact name that you used when you registered and enter the key code that you received.

After entering the key code, iRemember will not actually begin to index new pages until you've restarted your Macintosh, so you might want to quit all of your applications and restart at this point.

Normally you'll get back your key code within a day or two, especially if you register on-line. However, it can take Kagi Software up to a week to process a payment from the date they receive it and then a couple of days for the key code to be generated and sent. If you don't receive a "Thanks for your payment" e-mail message from Kagi Software within a few days, you can contact them at <admin@kagi.com>. If you have received the thank-you message, but don't receive a follow-on message with the key code within a couple of days, please contact Serac Software at admin@seracsoftware.com and we'll try to figure out what's happened.

## 6.6 Changing Registration Information

---

After you've entered your name and key code, the Register iRemember menu item and the Register button in the About Box both disappear. If you entered incorrect information or want to switch who the application is registered to, you can still get at the registration dialogs. **To change your registration information after entering the key code, just press the Option key while the About Box is open.** The Register button will reappear, letting you reenter registration information.

---

## 7 Contacting Us

---

### 7.1 Reporting Bugs

---

iRemember has been thoroughly tested on a wide variety of systems, but like all software, it can still contain bugs. We take software quality very seriously at Serac Software – if you experience any problems running iRemember, we want to hear about it! You might want to visit our web site first to make sure there isn't a newer version, and then send us email at [bugreport@seracsoftware.com](mailto:bugreport@seracsoftware.com) with iRemember in the subject. Include as much information as you can about your system configuration and what you were doing when the problem occurred. We'll do our best to get back to you promptly with a fix or to ask for more information.

### 7.2 Comments and Suggestions

---

Let us know how you're using iRemember, what you like and don't like, what you'd like to see in future versions, etc. Send your comments to [suggestions@seracsoftware.com](mailto:suggestions@seracsoftware.com) with iRemember in the subject. We might not be able to answer all of your email, but you'll influence future versions of iRemember.

Some of the new features that we're working on for the next major release include:

- An automatically updated list of the 10 most recently visited pages and 10 most frequently visited pages in the iRemember global menu so that you can easily return to any one of them.
- Multiple selection in the History window.
- Delete selected accesses in the History window.

---

## 8 Software License

---

PLEASE READ THIS SOFTWARE LICENSE AGREEMENT ("LICENSE") CAREFULLY BEFORE USING iRemember ("SOFTWARE"). BY USING THE SOFTWARE, YOU ARE AGREEING TO BE BOUND BY THE TERMS OF THIS LICENSE. IF YOU DO NOT AGREE TO THE TERMS OF THIS LICENSE, PROMPTLY RETURN THE SOFTWARE TO THE PLACE WHERE YOU OBTAINED IT FOR A REFUND.

1. **License.** The software and any fonts accompanying this License whether on disk, in read only memory, or on any other media (the "Software") are licensed, not sold, to you by Serac Software. You own the media on which the Software is recorded but Serac Software and/or Serac Software's licensor(s) retain title to the Software. The Software in this package and any copies which this License authorizes you to make are subject to this License.

2. **Permitted Uses and Restrictions.** This License allows you to install and use the Software on a single computer at a time. This License does not allow the Software to exist on more than one computer at a time. You may make one copy of the Software in machine-readable form for backup purposes only. The backup copy must include all copyright information contained on the original. Except as permitted by applicable law and this License, you may not decompile, reverse engineer, disassemble, modify, rent, lease, loan, distribute, sublicense, create derivative works from the Software or transmit the Software over a network. You may, however, transfer your rights under this License provided you transfer the related documentation, this License and a copy of the Software to a party who agrees to accept the terms of this License and destroy any other copies of the Software in your possession. Your rights under this License will terminate automatically without notice from Serac Software if you fail to comply with any term(s) of this License.

3. **Limited Warranty on Media.** Serac Software warrants the media on which the Software is recorded to be free from defects in materials and workmanship under normal use for a period of ninety (90) days from the date of original retail purchase. Your exclusive remedy under this paragraph shall be, at Serac Software's option, a refund of the purchase price of the product containing the Software or replacement of the Software which is returned to Serac Software or a Serac Software authorized representative with a copy of the receipt. THIS LIMITED WARRANTY AND ANY IMPLIED WARRANTIES ON THE MEDIA INCLUDING THE IMPLIED WARRANTIES OF MERCHANTABILITY AND FITNESS FOR A PARTICULAR PURPOSE ARE LIMITED IN DURATION TO NINETY (90) DAYS FROM THE DATE OF ORIGINAL RETAIL PURCHASE. SOME JURISDICTIONS DO NOT ALLOW LIMITATIONS ON HOW LONG AN IMPLIED WARRANTY LASTS, SO THIS LIMITATION MAY NOT APPLY TO YOU. THE LIMITED WARRANTY SET FORTH HEREIN IS EXCLUSIVE AND IN LIEU OF ALL OTHERS, WHETHER ORAL OR WRITTEN, EXPRESS OR IMPLIED. SERAC SOFTWARE SPECIFICALLY DISCLAIMS ALL OTHER WARRANTIES. THIS LIMITED WARRANTY GIVES YOU SPECIFIC LEGAL RIGHTS, AND YOU MAY ALSO HAVE OTHER RIGHTS WHICH VARY BY JURISDICTION.

4. **Disclaimer of Warranty on Software.** You expressly acknowledge and agree that use of the Software is at your sole risk. The Software is provided "AS IS" and without warranty of any kind and Serac Software and Serac Software's licensor(s) (for the purposes of provisions 4 and 5, Serac Software and Serac Software's licensor(s) shall be collectively referred to as "Serac Software") EXPRESSLY DISCLAIM ALL WARRANTIES, EXPRESS OR IMPLIED, INCLUDING, BUT NOT LIMITED TO, THE IMPLIED WARRANTIES OF MERCHANTABILITY AND FITNESS FOR A PARTICULAR PURPOSE. SERAC SOFTWARE DOES NOT WARRANT THAT THE FUNCTIONS CONTAINED IN THE SOFTWARE WILL MEET YOUR REQUIREMENTS, OR THAT THE OPERATION OF THE SOFTWARE WILL BE UNINTERRUPTED OR ERROR-FREE, OR THAT DEFECTS IN THE SOFTWARE WILL BE CORRECTED. FURTHERMORE, SERAC SOFTWARE DOES NOT WARRANT OR MAKE ANY

REPRESENTATIONS REGARDING THE USE OR THE RESULTS OF THE USE OF THE SOFTWARE OR RELATED DOCUMENTATION IN TERMS OF THEIR CORRECTNESS, ACCURACY, RELIABILITY, OR OTHERWISE. NO ORAL OR WRITTEN INFORMATION OR ADVICE GIVEN BY SERAC SOFTWARE OR A SERAC SOFTWARE AUTHORIZED REPRESENTATIVE SHALL CREATE A WARRANTY OR IN ANY WAY INCREASE THE SCOPE OF THIS WARRANTY. SHOULD THE SOFTWARE PROVE DEFECTIVE, YOU (AND NOT SERAC SOFTWARE OR A SERAC SOFTWARE AUTHORIZED REPRESENTATIVE) ASSUME THE ENTIRE COST OF ALL NECESSARY SERVICING, REPAIR OR CORRECTION. SOME JURISDICTIONS DO NOT ALLOW THE EXCLUSION OF IMPLIED WARRANTIES, SO THE ABOVE EXCLUSION MAY NOT APPLY TO YOU.

**5. Limitation of Liability.** UNDER NO CIRCUMSTANCES, INCLUDING NEGLIGENCE, SHALL SERAC SOFTWARE BE LIABLE FOR ANY INCIDENTAL, SPECIAL, INDIRECT OR CONSEQUENTIAL DAMAGES ARISING OUT OF OR RELATING TO THIS LICENSE. SOME JURISDICTIONS DO NOT ALLOW THE LIMITATION OF INCIDENTAL OR CONSEQUENTIAL DAMAGES SO THIS LIMITATION MAY NOT APPLY TO YOU. In no event shall Serac Software's total liability to you for all damages exceed the amount paid for this License to the Software.

**6. Export Law Assurances.** You may not use or otherwise export or reexport the Software except as authorized by United States law and the laws of the jurisdiction in which the Software was obtained. In particular, but without limitation, none of the Software may be used or otherwise exported or reexported (i) into (or to a national or resident of) a United States embargoed country or (ii) to anyone on the U.S. Treasury Department's list of Specially Designated Nationals or the U.S. Department of Commerce's Table of Denial Orders. By using the Software, you represent and warrant that you are not located in, under control of, or a national or resident of any such country or on any such list.

**7. Government End Users.** If the Software is supplied to the United States Government, the Software is classified as "restricted computer software" as defined in clause 52.227-19 of the FAR. The United States Government's rights to the Software are as provided in clause 52.227-19 of the FAR.

**8. Controlling Law and Severability.** This License shall be governed by the laws of the United States and the State of California. If for any reason a court of competent jurisdiction finds any provision, or portion thereof, to be unenforceable, the remainder of this License shall continue in full force and effect.

**9. Complete Agreement.** This License constitutes the entire agreement between the parties with respect to the use of the Software and supersedes all prior or contemporaneous understandings regarding such subject matter. No amendment to or modification of this License will be binding unless in writing and signed by Serac Software.