

Earwig Factory

Technology: PostScript Single Master
PostScript Name: EarwigFactory
Version: 001.000
Font Suitcase File: Earwig Factory.bmap
Font Outline File: EarwiFac
(C) 1998 Ray Larabie

a b c d e f g h i j k l m n o p q r s t u v w x y z
A B C D E F G H I J K L M N O P Q R S T U V W X
1 2 3 4 5 6 7 8 9 0 \$ % & (, . / : # ! ?)

while the basic shapes of letters have not changed much in
hundreds of years, there have been thousands of variations
on the theme. There are special types for telephone
books, newspapers and magazines, and for the exclusive
use of corporations. Some typefaces have a leisurely look
about them while conforming to everyday typographic

8 sphinx of black quartz judge my vow.
10 sphinx of black quartz judge my vow.
12 sphinx of black quartz judge my vow.
14 sphinx of black quartz judge my vow.
18 sphinx of black quartz judge my vow.
24 sphinx of black quartz judge my vow.
30 sphinx of black quartz judge my v
36 sphinx of black quartz judge
48 sphinx of black quartz
60 sphinx of black q
72 sphinx of blac

Echelon-Roman

Technology: PostScript Single Master
PostScript Name: Echelon-Roman
Version: 001.000
Font Suitcase File: Echelon-Roman.bmap
Font Outline File: EchelRom
(C) 1999 Ray Larabie - rlarabie@hotmail.com

abcdefghijklmnopqrstuvwxyz

ABCDEFGHIJKLMNOPQRSTUVWXYZ

1234567890 \$%&(.,:#!?)

While the basic shapes of letters have not changed much in hundreds of years, there have been thousands of variations on the theme. There are special types for telephone books, newspapers and magazines, and for the exclusive use of corporations. Some typefaces have a leisurely look about them while conforming to everyday typographic expectations. Others were born with unusual, yet casual, shapes and make the best of it.

8 Sphinx of black quartz judge my vow.

10 Sphinx of black quartz judge my vow.

12 Sphinx of black quartz judge my vow.

14 Sphinx of black quartz judge my vow.

18 Sphinx of black quartz judge my vow.

24 Sphinx of black quartz judge my vow.

30 Sphinx of black quartz judge my vow.

36 Sphinx of black quartz judge my vow.

48 Sphinx of black quartz judge my vow.

60 Sphinx of black quartz judge my

72 Sphinx of black quartz judg

Echelon-Italic

Technology: PostScript Single Master
PostScript Name: Echelon-Italic
Version: 001.000
Font Suitcase File: Echelon-Italic.bmap
Font Outline File: EchellIta
(C) 1999 Ray Larabie - rlarabie@hotmail.com

abcdefghijklmnopqrstuvwxyz
ABCDEFGHIJKLMNOPQRSTUVWXYZ
1234567890 \$ % & (, . : ; # ! ?)

While the basic shapes of letters have not changed much in hundreds of years, there have been thousands of variations on the theme. There are special types for telephone books, newspapers and magazines, and for the exclusive use of corporations. Some typefaces have a leisurely look about them while conforming to everyday typographic expectations. Others were born with unusual, yet casual, shapes and make the best of it.

8 *Sphinx of black quartz judge my vow.*

10 *Sphinx of black quartz judge my vow.*

12 *Sphinx of black quartz judge my vow.*

14 *Sphinx of black quartz judge my vow.*

18 *Sphinx of black quartz judge my vow.*

24 *Sphinx of black quartz judge my vow.*

30 *Sphinx of black quartz judge my vow.*

36 *Sphinx of black quartz judge my vow.*

48 *Sphinx of black quartz judge my vow.*

60 *Sphinx of black quartz judge my v*

72 *Sphinx of black quartz judge*

Echelon Condensed

Technology: PostScript Single Master
PostScript Name: EchelonCondensed
Version: 001.000
Font Suitcase File: Echelon Condensed.bmap
Font Outline File: EchelCon
\\251 2000 Ray Larabie - rlarabie@hotmail.com

abcdefghijklmnopqrstuvwxyz

ABCDEFGHIJKLMNOPQRSTUVWXYZ

1234567890 \$ % & (. , : ; # ! ?)

While the basic shapes of letters have not changed much in hundreds of years, there have been thousands of variations on the theme. There are special types for telephone books, newspapers and magazines, and for the exclusive use of corporations. Some typefaces have a leisurely look about them while conforming to everyday typographic expectations. Others were born with unusual, yet casual, shapes and make the best of it.

8 Sphinx of black quartz judge my vow.

10 Sphinx of black quartz judge my vow.

12 Sphinx of black quartz judge my vow.

14 Sphinx of black quartz judge my vow.

18 Sphinx of black quartz judge my vow.

24 Sphinx of black quartz judge my vow.

30 Sphinx of black quartz judge my vow.

36 Sphinx of black quartz judge my vow.

48 Sphinx of black quartz judge my vow.

60 Sphinx of black quartz judge my vow.

72 Sphinx of black quartz judge my vow.

Echelon Condensed-Italic

Technology: PostScript Single Master
PostScript Name: EchelonCondensed-Italic
Version: 001.000
Font Suitcase File: Echelon Condensed-Italic.bmap
Font Outline File: EchelConIta
(C) 2000 Ray Larabie - rlarabie@hotmail.com

abcdefghijklmnopqrstuvwxyz

ABCDEFGHIJKLMNOPQRSTUVWXYZ

1234567890 \$%&('.,:;!?)

While the basic shapes of letters have not changed much in hundreds of years, there have been thousands of variations on the theme. There are special types for telephone books, newspapers and magazines, and for the exclusive use of corporations. Some typefaces have a leisurely look about them while conforming to everyday typographic expectations. Others were born with unusual, yet casual, shapes and make the best of it.

8 *Sphinx of black quartz judge my vow.*

10 *Sphinx of black quartz judge my vow.*

12 *Sphinx of black quartz judge my vow.*

14 *Sphinx of black quartz judge my vow.*

18 *Sphinx of black quartz judge my vow.*

24 *Sphinx of black quartz judge my vow.*

30 *Sphinx of black quartz judge my vow.*

36 *Sphinx of black quartz judge my vow.*

48 *Sphinx of black quartz judge my vow.*

60 *Sphinx of black quartz judge my vow.*

72 *Sphinx of black quartz judge my vow.*

Eden Mills

Technology: PostScript Single Master
PostScript Name: EdenMills
Version: 001.000
Font Suitcase File: Eden Mills.bmap
Font Outline File: EdenMil
C 1999 Ray Larabie - rlarabie@hotmail.com

abcdefghijklmnopqrstuvwxyz
ABCDEFGHIJKLMNOPQRSTUVWXYZ
1234567890 \$%&('*,;#!?)

While the basic shapes of letters have not changed much in hundreds of years, there have been thousands of variations on the theme. There are special types for telephone books, newspapers and magazines, and for the exclusive use of corporations. Some typefaces have a leisurely look about them while conforming to everyday typographic expectations. Others were born with unusual, yet casual, shapes and make the best

8 Sphinx of black quartz judge my vow.

10 Sphinx of black quartz judge my vow.

12 Sphinx of black quartz judge my vow.

14 Sphinx of black quartz judge my vow.

18 Sphinx of black quartz judge my vow.

24 Sphinx of black quartz judge my vow.

30 Sphinx of black quartz judge my vow.

36 Sphinx of black quartz judge my vo

48 Sphinx of black quartz jud

60 Sphinx of black quart

72 Sphinx of black q

Eden Mills-Italic

Technology: PostScript Single Master
PostScript Name: EdenMills-Italic
Version: 001.000
Font Suitcase File: Eden Mills-Italic.bmap
Font Outline File: EdenMilIta
C 1999 Ray Larabie - rlarabie@hotmail.com

abcdefghijklmnopqrstuvwxyz
ABCDEFGHIJKLMNOPQRSTUVWXYZ
1234567890 \$%&{.,:;#!?}

While the basic shapes of letters have not changed much in hundreds of years, there have been thousands of variations on the theme. There are special types for telephone books, newspapers and magazines, and for the exclusive use of corporations. Some typefaces have a leisurely look about them while conforming to everyday typographic expectations. Others were born with unusual, yet casual, shapes and make the best of it.

8 *Sphinx of black quartz judge my vow.*

10 *Sphinx of black quartz judge my vow.*

12 *Sphinx of black quartz judge my vow.*

14 *Sphinx of black quartz judge my vow.*

18 *Sphinx of black quartz judge my vow.*

24 *Sphinx of black quartz judge my vow.*

30 *Sphinx of black quartz judge my vow.*

36 *Sphinx of black quartz judge my vow.*

48 *Sphinx of black quartz judge*

60 *Sphinx of black quartz j*

72 *Sphinx of black qua*

Eden Mills-Bold

Technology: PostScript Single Master
PostScript Name: EdenMills-Bold
Version: 001.000
Font Suitcase File: Eden Mills-Bold.bmap
Font Outline File: EdenMilBol
C 1999 Ray Larabie - rlarabie@hotmail.com

a b c d e f g h i j k l m n o p q r s t u v w x y z
A B C D E F G H I J K L M N O P Q R S T U V W X Y Z
1 2 3 4 5 6 7 8 9 0 \$ % & (, . : ; # ! ?)

While the basic shapes of letters have not changed much in hundreds of years, there have been thousands of variations on the theme. There are special types for telephone books, newspapers and magazines, and for the exclusive use of corporations. Some typefaces have a leisurely look about them while conforming to everyday typographic expectations. Others

8 Sphinx of black quartz judge my vow.
10 Sphinx of black quartz judge my vow.
12 Sphinx of black quartz judge my vow.
14 Sphinx of black quartz judge my vow.
18 Sphinx of black quartz judge my vow.
24 Sphinx of black quartz judge my vow.
30 Sphinx of black quartz judge my vow.
36 Sphinx of black quartz judge my
48 Sphinx of black quartz j
60 Sphinx of black qu
72 Sphinx of black

Edgewater

Technology: PostScript Single Master
PostScript Name: Edgewater
Version: 001.000
Font Suitcase File: Edgewater.bmap
Font Outline File: Edgew
\\(C) 1999 Ray Larbie rlarbie@hotmail.com

WHILE THE BASIC SHAPES OF LETTERS HAVE NOT CHANGED MUCH IN HUNDREDS OF YEARS, THERE HAVE BEEN THOUSANDS OF VARIATIONS ON THE THEME. THERE ARE SPECIAL TYPES FOR TELEPHONE BOOKS, NEWSPAPERS AND MAGAZINES, AND FOR THE EXCLUSIVE USE OF

8 SPHINX OF BLACK QUARTZ JUDGE MY VOW.
10 SPHINX OF BLACK QUARTZ JUDGE MY VOW.
12 SPHINX OF BLACK QUARTZ JUDGE MY VOW.
14 SPHINX OF BLACK QUARTZ JUDGE MY VOW.
18 SPHINX OF BLACK QUARTZ JUDGE MY VOW.
24 SPHINX OF BLACK QUARTZ JUDGE
30 SPHINX OF BLACK QUARTZ
36 SPHINX OF BLACK QUAR
48 SPHINX OF BLACK
60 SPHINX OF BL
72 SPHINX OF

Edmunds

Technology: PostScript Single Master
PostScript Name: Edmunds
Version: 001.000
Font Suitcase File: Edmunds.bmap
Font Outline File: Edmun
Copyright \(\c\) Ray Larabie, 2000. All rights reserved.

abcdefghijklmnopqrstuvwxyz
ABCDEFGHIJKLMNOPQRSTUVWXYZ
1234567890 \$%&(.,:;#!?)

While the basic shapes of letters have not changed much in hundreds of years, there have been thousands of variations on the theme. There are special types for telephone books, newspapers and magazines, and for the exclusive use of corporations. Some typefaces have a leisurely look about them while conforming to everyday typographic expectations. Others were born with

8 Sphinx of black quartz judge my vow.

10 Sphinx of black quartz judge my vow.

12 Sphinx of black quartz judge my vow.

14 Sphinx of black quartz judge my vow.

18 Sphinx of black quartz judge my vow.

24 Sphinx of black quartz judge my vow.

30 Sphinx of black quartz judge my vow.

36 Sphinx of black quartz judge m

48 Sphinx of black quartz j

60 Sphinx of black qu

Edmunds Distressed

Technology: PostScript Single Master
PostScript Name: EdmundsDistressed
Version: 001.000
Font Suitcase File: Edmunds Distressed.bmap
Font Outline File: EdmunDis
Copyright \(\c\) Ray Larabie, 2000. All rights reserved.

**abcdefghijklmnopqrstuvwxyz
ABCDEFGHIJKLMNOPQRSTUVWXYZ
1234567890 \$%&(.,:;#!?)**

While the basic shapes of letters have not changed much in hundreds of years, there have been thousands of variations on the theme. There are special types for telephone books, newspapers and magazines, and for the exclusive use of corporations. Some typefaces have a leisurely look about them while conforming to everyday typographic expectations. Others

8 **Sphinx of black quartz judge my vow.**

10 **Sphinx of black quartz judge my vow.**

12 **Sphinx of black quartz judge my vow.**

14 **Sphinx of black quartz judge my vow.**

18 **Sphinx of black quartz judge my vow.**

24 **Sphinx of black quartz judge my vow.**

30 **Sphinx of black quartz judge my vo**

36 **Sphinx of black quartz judge**

48 **Sphinx of black quartz**

Effloresce

Technology: PostScript Single Master

PostScript Name: Effloresce

Version: 001.000

Font Suitcase File: Effloresce.bmap

Font Outline File: Efflo

\\(C) 1999 Ray Larabie - rlarabie@hotmail.com

abcdefghijklmnopqrstuvwxyz

ABCDEFGHIJKLMNOPQRSTUVWXYZ

1234567890 \$%&{.,:;!?)

While the basic shapes of letters have not changed much in hundreds of years, there have been thousands of variations on the theme. There are special types for telephone books, newspapers and magazines, and for the exclusive use of corporations. Some typefaces have a leisurely look about them while conforming to everyday typographic expectations. Others were born with unusual, yet casual, shapes and

8 Sphinx of black quartz judge my vow.

10 Sphinx of black quartz judge my vow.

12 Sphinx of black quartz judge my vow.

14 Sphinx of black quartz judge my vow.

18 Sphinx of black quartz judge my vow.

24 Sphinx of black quartz judge my vow.

30 Sphinx of black quartz judge my vow.

36 Sphinx of black quartz judge my v

48 Sphinx of black quartz jud

60 Sphinx of black quar

Effloresce Antique

Technology: PostScript Single Master
PostScript Name: EffloresceAntique
Version: 001.000
Font Suitcase File: Effloresce Antique.bmap
Font Outline File: EffloAnt
(C) 1999 Ray Larabie - rlarabie@hotmail.com

abcdefghijklmnopqrstuvwxyz
ABCDEFGHIJKLMNOPQRSTUVWXYZ
1234567890 \$%&{.,:;!?)

While the basic shapes of letters have not changed much in hundreds of years, there have been thousands of variations on the theme. There are special types for telephone books, newspapers and magazines, and for the exclusive use of corporations. Some typefaces have a leisurely look about them while conforming to everyday typographic expectations. Others were born with unusual, yet casual, shapes and

8 Sphinx of black quartz judge my vow.
10 Sphinx of black quartz judge my vow.
12 Sphinx of black quartz judge my vow.
14 Sphinx of black quartz judge my vow.
18 Sphinx of black quartz judge my vow.
24 Sphinx of black quartz judge my vow.
30 Sphinx of black quartz judge my vow.
36 Sphinx of black quartz judge my v
48 Sphinx of black quartz jud
60 Sphinx of black quar

Electroharmonix

Technology: PostScript Single Master
PostScript Name: Electroharmonix
Version: 001.000
Font Suitcase File: Electroharmonix.bmap
Font Outline File: Elect
\\(C) 1999 Ray Larabie rlarabie@hotmail.com

𐀀𐀁𐀂𐀃𐀄𐀅𐀆𐀇𐀈𐀉𐀊𐀋𐀌𐀍𐀎𐀏𐀐𐀑𐀒𐀓𐀔𐀕𐀖𐀗𐀘𐀙𐀚𐀛𐀜𐀝𐀞𐀟𐀠𐀡𐀢𐀣𐀤𐀥𐀦𐀧𐀨𐀩𐀪𐀫𐀬𐀭𐀮𐀯𐀰𐀱𐀲𐀳𐀴𐀵𐀶𐀷𐀸𐀹𐀺𐀻𐀼𐀽𐀾𐀿𐁀𐁁𐁂𐁃𐁄𐁅𐁆𐁇𐁈𐁉𐁊𐁋𐁌𐁍𐁎𐁏𐁐𐁑𐁒𐁓𐁔𐁕𐁖𐁗𐁘𐁙𐁚𐁛𐁜𐁝𐁞𐁟𐁠𐁡𐁢𐁣𐁤𐁥𐁦𐁧𐁨𐁩𐁪𐁫𐁬𐁭𐁮𐁯𐁰𐁱𐁲𐁳𐁴𐁵𐁶𐁷𐁸𐁹𐁺𐁻𐁼𐁽𐁾𐁿𐂀𐂁𐂂𐂃𐂄𐂅𐂆𐂇𐂈𐂉𐂊𐂋𐂌𐂍𐂎𐂏𐂐𐂑𐂒𐂓𐂔𐂕𐂖𐂗𐂘𐂙𐂚𐂛𐂜𐂝𐂞𐂟𐂠𐂡𐂢𐂣𐂤𐂥𐂦𐂧𐂨𐂩𐂪𐂫𐂬𐂭𐂮𐂯𐂰𐂱𐂲𐂳𐂴𐂵𐂶𐂷𐂸𐂹𐂺𐂻𐂼𐂽𐂾𐂿𐃀𐃁𐃂𐃃𐃄𐃅𐃆𐃇𐃈𐃉𐃊𐃋𐃌𐃍𐃎𐃏𐃐𐃑𐃒𐃓𐃔𐃕𐃖𐃗𐃘𐃙𐃚𐃛𐃜𐃝𐃞𐃟𐃠𐃡𐃢𐃣𐃤𐃥𐃦𐃧𐃨𐃩𐃪𐃫𐃬𐃭𐃮𐃯𐃰𐃱𐃲𐃳𐃴𐃵𐃶𐃷𐃸𐃹𐃺𐃻𐃼𐃽𐃾𐃿𐄀𐄁𐄂𐄃𐄄𐄅𐄆𐄇𐄈𐄉𐄊𐄋𐄌𐄍𐄎𐄏𐄐𐄑𐄒𐄓𐄔𐄕𐄖𐄗𐄘𐄙𐄚𐄛𐄜𐄝𐄞𐄟𐄠𐄡𐄢𐄣𐄤𐄥𐄦𐄧𐄨𐄩𐄪𐄫𐄬𐄭𐄮𐄯𐄰𐄱𐄲𐄳𐄴𐄵𐄶𐄷𐄸𐄹𐄺𐄻𐄼𐄽𐄾𐄿𐅀𐅁𐅂𐅃𐅄𐅅𐅆𐅇𐅈𐅉𐅊𐅋𐅌𐅍𐅎𐅏𐅐𐅑𐅒𐅓𐅔𐅕𐅖𐅗𐅘𐅙𐅚𐅛𐅜𐅝𐅞𐅟𐅠𐅡𐅢𐅣𐅤𐅥𐅦𐅧𐅨𐅩𐅪𐅫𐅬𐅭𐅮𐅯𐅰𐅱𐅲𐅳𐅴𐅵𐅶𐅷𐅸𐅹𐅺𐅻𐅼𐅽𐅾𐅿𐆀𐆁𐆂𐆃𐆄𐆅𐆆𐆇𐆈𐆉𐆊𐆋𐆌𐆍𐆎𐆏𐆐𐆑𐆒𐆓𐆔𐆕𐆖𐆗𐆘𐆙𐆚𐆛𐆜𐆝𐆞𐆟𐆠𐆡𐆢𐆣𐆤𐆥𐆦𐆧𐆨𐆩𐆪𐆫𐆬𐆭𐆮𐆯𐆰𐆱𐆲𐆳𐆴𐆵𐆶𐆷𐆸𐆹𐆺𐆻𐆼𐆽𐆾𐆿𐇀𐇁𐇂𐇃𐇄𐇅𐇆𐇇𐇈𐇉𐇊𐇋𐇌𐇍𐇎𐇏𐇐𐇑𐇒𐇓𐇔𐇕𐇖𐇗𐇘𐇙𐇚𐇛𐇜𐇝𐇞𐇟𐇠𐇡𐇢𐇣𐇤𐇥𐇦𐇧𐇨𐇩𐇪𐇫𐇬𐇭𐇮𐇯𐇰𐇱𐇲𐇳𐇴𐇵𐇶𐇷𐇸𐇹𐇺𐇻𐇼𐇽𐇾𐇿𐈀𐈁𐈂𐈃𐈄𐈅𐈆𐈇𐈈𐈉𐈊𐈋𐈌𐈍𐈎𐈏𐈐𐈑𐈒𐈓𐈔𐈕𐈖𐈗𐈘𐈙𐈚𐈛𐈜𐈝𐈞𐈟𐈠𐈡𐈢𐈣𐈤𐈥𐈦𐈧𐈨𐈩𐈪𐈫𐈬𐈭𐈮𐈯𐈰𐈱𐈲𐈳𐈴𐈵𐈶𐈷𐈸𐈹𐈺𐈻𐈼𐈽𐈾𐈿𐉀𐉁𐉂𐉃𐉄𐉅𐉆𐉇𐉈𐉉𐉊𐉋𐉌𐉍𐉎𐉏𐉐𐉑𐉒𐉓𐉔𐉕𐉖𐉗𐉘𐉙𐉚𐉛𐉜𐉝𐉞𐉟𐉠𐉡𐉢𐉣𐉤𐉥𐉦𐉧𐉨𐉩𐉪𐉫𐉬𐉭𐉮𐉯𐉰𐉱𐉲𐉳𐉴𐉵𐉶𐉷𐉸𐉹𐉺𐉻𐉼𐉽𐉾𐉿𐊀𐊁𐊂𐊃𐊄𐊅𐊆𐊇𐊈𐊉𐊊𐊋𐊌𐊍𐊎𐊏𐊐𐊑𐊒𐊓𐊔𐊕𐊖𐊗𐊘𐊙𐊚𐊛𐊜𐊝𐊞𐊟𐊠𐊡𐊢𐊣𐊤𐊥𐊦𐊧𐊨𐊩𐊪𐊫𐊬𐊭𐊮𐊯𐊰𐊱𐊲𐊳𐊴𐊵𐊶𐊷𐊸𐊹𐊺𐊻𐊼𐊽𐊾𐊿𐋀𐋁𐋂𐋃𐋄𐋅𐋆𐋇𐋈𐋉𐋊𐋋𐋌𐋍𐋎𐋏𐋐𐋑𐋒𐋓𐋔𐋕𐋖𐋗𐋘𐋙𐋚𐋛𐋜𐋝𐋞𐋟𐋠𐋡𐋢𐋣𐋤𐋥𐋦𐋧𐋨𐋩𐋪𐋫𐋬𐋭𐋮𐋯𐋰𐋱𐋲𐋳𐋴𐋵𐋶𐋷𐋸𐋹𐋺𐋻𐋼𐋽𐋾𐋿𐌀𐌁𐌂𐌃𐌄𐌅𐌆𐌇𐌈𐌉𐌊𐌋𐌌𐌍𐌎𐌏𐌐𐌑𐌒𐌓𐌔𐌕𐌖𐌗𐌘𐌙𐌚𐌛𐌜𐌝𐌞𐌟𐌠𐌡𐌢𐌣𐌤𐌥𐌦𐌧𐌨𐌩𐌪𐌫𐌬𐌭𐌮𐌯𐌰𐌱𐌲𐌳𐌴𐌵𐌶𐌷𐌸𐌹𐌺𐌻𐌼𐌽𐌾𐌿𐍀𐍁𐍂𐍃𐍄𐍅𐍆𐍇𐍈𐍉𐍊𐍋𐍌𐍍𐍎𐍏𐍐𐍑𐍒𐍓𐍔𐍕𐍖𐍗𐍘𐍙𐍚𐍛𐍜𐍝𐍞𐍟𐍠𐍡𐍢𐍣𐍤𐍥𐍦𐍧𐍨𐍩𐍪𐍫𐍬𐍭𐍮𐍯𐍰𐍱𐍲𐍳𐍴𐍵𐍶𐍷𐍸𐍹𐍺𐍻𐍼𐍽𐍾𐍿𐎀𐎁𐎂𐎃𐎄𐎅𐎆𐎇𐎈𐎉𐎊𐎋𐎌𐎍𐎎𐎏𐎐𐎑𐎒𐎓𐎔𐎕𐎖𐎗𐎘𐎙𐎚𐎛𐎜𐎝𐎞𐎟𐎠𐎡𐎢𐎣𐎤𐎥𐎦𐎧𐎨𐎩𐎪𐎫𐎬𐎭𐎮𐎯𐎰𐎱𐎲𐎳𐎴𐎵𐎶𐎷𐎸𐎹𐎺𐎻𐎼𐎽𐎾𐎿𐏀𐏁𐏂𐏃𐏄𐏅𐏆𐏇𐏈𐏉𐏊𐏋𐏌𐏍𐏎𐏏𐏐𐏑𐏒𐏓𐏔𐏕𐏖𐏗𐏘𐏙𐏚𐏛𐏜𐏝𐏞𐏟𐏠𐏡𐏢𐏣𐏤𐏥𐏦𐏧𐏨𐏩𐏪𐏫𐏬𐏭𐏮𐏯𐏰𐏱𐏲𐏳𐏴𐏵𐏶𐏷𐏸𐏹𐏺𐏻𐏼𐏽𐏾𐏿𐐀𐐁𐐂𐐃𐐄𐐅𐐆𐐇𐐈𐐉𐐊𐐋𐐌𐐍𐐎𐐏𐐐𐐑𐐒𐐓𐐔𐐕𐐖𐐗𐐘𐐙𐐚𐐛𐐜𐐝𐐞𐐟𐐠𐐡𐐢𐐣𐐤𐐥𐐦𐐧𐐨𐐩𐐪𐐫𐐬𐐭𐐮𐐯𐐰𐐱𐐲𐐳𐐴𐐵𐐶𐐷𐐸𐐹𐐺𐐻𐐼𐐽𐐾𐐿𐑀𐑁𐑂𐑃𐑄𐑅𐑆𐑇𐑈𐑉𐑊𐑋𐑌𐑍𐑎𐑏𐑐𐑑𐑒𐑓𐑔𐑕𐑖𐑗𐑘𐑙𐑚𐑛𐑜𐑝𐑞𐑟𐑠𐑡𐑢𐑣𐑤𐑥𐑦𐑧𐑨𐑩𐑪𐑫𐑬𐑭𐑮𐑯𐑰𐑱𐑲𐑳𐑴𐑵𐑶𐑷𐑸𐑹𐑺𐑻𐑼𐑽𐑾𐑿𐒀𐒁𐒂𐒃𐒄𐒅𐒆𐒇𐒈𐒉𐒊𐒋𐒌𐒍𐒎𐒏𐒐𐒑𐒒𐒓𐒔𐒕𐒖𐒗𐒘𐒙𐒚𐒛𐒜𐒝𐒞𐒟𐒠𐒡𐒢𐒣𐒤𐒥𐒦𐒧𐒨𐒩𐒪𐒫𐒬𐒭𐒮𐒯𐒰𐒱𐒲𐒳𐒴𐒵𐒶𐒷𐒸𐒹𐒺𐒻𐒼𐒽𐒾𐒿𐓀𐓁𐓂𐓃𐓄𐓅𐓆𐓇𐓈𐓉𐓊𐓋𐓌𐓍𐓎𐓏𐓐𐓑𐓒𐓓𐓔𐓕𐓖𐓗𐓘𐓙𐓚𐓛𐓜𐓝𐓞𐓟𐓠𐓡𐓢𐓣𐓤𐓥𐓦𐓧𐓨𐓩𐓪𐓫𐓬𐓭𐓮𐓯𐓰𐓱𐓲𐓳𐓴𐓵𐓶𐓷𐓸𐓹𐓺𐓻𐓼𐓽𐓾𐓿𐔀𐔁𐔂𐔃𐔄𐔅𐔆𐔇𐔈𐔉𐔊𐔋𐔌𐔍𐔎𐔏𐔐𐔑𐔒𐔓𐔔𐔕𐔖𐔗𐔘𐔙𐔚𐔛𐔜𐔝𐔞𐔟𐔠𐔡𐔢𐔣𐔤𐔥𐔦𐔧𐔨𐔩𐔪𐔫𐔬𐔭𐔮𐔯𐔰𐔱𐔲𐔳𐔴𐔵𐔶𐔷𐔸𐔹𐔺𐔻𐔼𐔽𐔾𐔿𐕀𐕁𐕂𐕃𐕄𐕅𐕆𐕇𐕈𐕉𐕊𐕋𐕌𐕍𐕎𐕏𐕐𐕑𐕒𐕓𐕔𐕕𐕖𐕗𐕘𐕙𐕚𐕛𐕜𐕝𐕞𐕟𐕠𐕡𐕢𐕣𐕤𐕥𐕦𐕧𐕨𐕩𐕪𐕫𐕬𐕭𐕮𐕯𐕰𐕱𐕲𐕳𐕴𐕵𐕶𐕷𐕸𐕹𐕺𐕻𐕼𐕽𐕾𐕿𐖀𐖁𐖂𐖃𐖄𐖅𐖆𐖇𐖈𐖉𐖊𐖋𐖌𐖍𐖎𐖏𐖐𐖑𐖒𐖓𐖔𐖕𐖖𐖗𐖘𐖙𐖚𐖛𐖜𐖝𐖞𐖟𐖠𐖡𐖢𐖣𐖤𐖥𐖦𐖧𐖨𐖩𐖪𐖫𐖬𐖭𐖮𐖯𐖰𐖱𐖲𐖳𐖴𐖵𐖶𐖷𐖸𐖹𐖺𐖻𐖼𐖽𐖾𐖿𐗀𐗁𐗂𐗃𐗄𐗅𐗆𐗇𐗈𐗉𐗊𐗋𐗌𐗍𐗎𐗏𐗐𐗑𐗒𐗓𐗔𐗕𐗖𐗗𐗘𐗙𐗚𐗛𐗜𐗝𐗞𐗟𐗠𐗡𐗢𐗣𐗤𐗥𐗦𐗧𐗨𐗩𐗪𐗫𐗬𐗭𐗮𐗯𐗰𐗱𐗲𐗳𐗴𐗵𐗶𐗷𐗸𐗹𐗺𐗻𐗼𐗽𐗾𐗿𐘀𐘁𐘂𐘃𐘄𐘅𐘆𐘇𐘈𐘉𐘊𐘋𐘌𐘍𐘎𐘏𐘐𐘑𐘒𐘓𐘔𐘕𐘖𐘗𐘘𐘙𐘚𐘛𐘜𐘝𐘞𐘟𐘠𐘡𐘢𐘣𐘤𐘥𐘦𐘧𐘨𐘩𐘪𐘫𐘬𐘭𐘮𐘯𐘰𐘱𐘲𐘳𐘴𐘵𐘶𐘷𐘸𐘹𐘺𐘻𐘼𐘽𐘾𐘿𐙀𐙁𐙂𐙃𐙄𐙅𐙆𐙇𐙈𐙉𐙊𐙋𐙌𐙍𐙎𐙏𐙐𐙑𐙒𐙓𐙔𐙕𐙖𐙗𐙘𐙙𐙚𐙛𐙜𐙝𐙞𐙟𐙠𐙡𐙢𐙣𐙤𐙥𐙦𐙧𐙨𐙩𐙪𐙫𐙬𐙭𐙮𐙯𐙰𐙱𐙲𐙳𐙴𐙵𐙶𐙷𐙸𐙹𐙺𐙻𐙼𐙽𐙾𐙿𐚀𐚁𐚂𐚃𐚄𐚅𐚆𐚇𐚈𐚉𐚊𐚋𐚌𐚍𐚎𐚏𐚐𐚑𐚒𐚓𐚔𐚕𐚖𐚗𐚘𐚙𐚚𐚛𐚜𐚝𐚞𐚟𐚠𐚡𐚢𐚣𐚤𐚥𐚦𐚧𐚨𐚩𐚪𐚫𐚬𐚭𐚮𐚯𐚰𐚱𐚲𐚳𐚴𐚵𐚶𐚷𐚸𐚹𐚺𐚻𐚼𐚽𐚾𐚿𐛀𐛁𐛂𐛃𐛄𐛅𐛆𐛇𐛈𐛉𐛊𐛋𐛌𐛍𐛎𐛏𐛐𐛑𐛒𐛓𐛔𐛕𐛖𐛗𐛘𐛙𐛚𐛛𐛜𐛝𐛞𐛟𐛠𐛡𐛢𐛣𐛤𐛥𐛦𐛧𐛨𐛩𐛪𐛫𐛬𐛭𐛮𐛯𐛰𐛱𐛲𐛳𐛴𐛵𐛶𐛷𐛸𐛹𐛺𐛻𐛼𐛽𐛾𐛿𐜀𐜁𐜂𐜃𐜄𐜅𐜆𐜇𐜈𐜉𐜊𐜋𐜌𐜍𐜎𐜏𐜐𐜑𐜒𐜓𐜔𐜕𐜖𐜗𐜘𐜙𐜚𐜛𐜜𐜝𐜞𐜟𐜠𐜡𐜢𐜣𐜤𐜥𐜦𐜧𐜨𐜩𐜪𐜫𐜬𐜭𐜮𐜯𐜰𐜱𐜲𐜳𐜴𐜵𐜶𐜷𐜸𐜹𐜺𐜻𐜼𐜽𐜾𐜿𐝀𐝁𐝂𐝃𐝄𐝅𐝆𐝇𐝈𐝉𐝊𐝋𐝌𐝍𐝎𐝏𐝐𐝑𐝒𐝓𐝔𐝕𐝖𐝗𐝘𐝙𐝚𐝛𐝜𐝝𐝞𐝟𐝠𐝡𐝢𐝣𐝤𐝥𐝦𐝧𐝨𐝩𐝪𐝫𐝬𐝭𐝮𐝯𐝰𐝱𐝲𐝳𐝴𐝵𐝶𐝷𐝸𐝹𐝺𐝻𐝼𐝽𐝾𐝿𐞀𐞁𐞂𐞃𐞄𐞅𐞆𐞇𐞈𐞉𐞊𐞋𐞌𐞍𐞎𐞏𐞐𐞑𐞒𐞓𐞔𐞕𐞖𐞗𐞘𐞙𐞚𐞛𐞜𐞝𐞞𐞟𐞠𐞡𐞢𐞣𐞤𐞥𐞦𐞧𐞨𐞩𐞪𐞫𐞬𐞭𐞮𐞯𐞰𐞱𐞲𐞳𐞴𐞵𐞶𐞷𐞸𐞹𐞺𐞻𐞼𐞽𐞾𐞿𐟀𐟁𐟂𐟃𐟄𐟅𐟆𐟇𐟈𐟉𐟊𐟋𐟌𐟍𐟎𐟏𐟐𐟑𐟒𐟓𐟔𐟕𐟖𐟗𐟘𐟙𐟚𐟛𐟜𐟝𐟞𐟟𐟠𐟡𐟢𐟣𐟤𐟥𐟦𐟧𐟨𐟩𐟪𐟫𐟬𐟭𐟮𐟯𐟰𐟱𐟲𐟳𐟴𐟵𐟶𐟷𐟸𐟹𐟺𐟻𐟼𐟽𐟾𐟿𐠀𐠁𐠂𐠃𐠄𐠅𐠆𐠇𐠈𐠉𐠊𐠋𐠌𐠍𐠎𐠏𐠐𐠑𐠒𐠓𐠔𐠕𐠖𐠗𐠘𐠙𐠚𐠛𐠜𐠝𐠞𐠟𐠠𐠡𐠢𐠣𐠤𐠥𐠦𐠧𐠨𐠩𐠪𐠫𐠬𐠭𐠮𐠯𐠰𐠱𐠲𐠳𐠴𐠵𐠶𐠷𐠸𐠹𐠺𐠻𐠼𐠽𐠾𐠿𐡀𐡁𐡂𐡃𐡄𐡅𐡆𐡇𐡈𐡉𐡊𐡋𐡌𐡍𐡎𐡏𐡐𐡑𐡒𐡓𐡔𐡕𐡖𐡗𐡘𐡙𐡚𐡛𐡜𐡝𐡞𐡟𐡠𐡡𐡢𐡣𐡤𐡥𐡦𐡧𐡨𐡩𐡪𐡫𐡬𐡭𐡮𐡯𐡰𐡱𐡲𐡳𐡴𐡵𐡶𐡷𐡸𐡹𐡺𐡻𐡼𐡽𐡾𐡿𐢀𐢁𐢂𐢃𐢄𐢅𐢆𐢇𐢈𐢉𐢊𐢋𐢌𐢍𐢎𐢏𐢐𐢑𐢒𐢓𐢔𐢕𐢖𐢗𐢘𐢙𐢚𐢛𐢜𐢝𐢞𐢟𐢠𐢡𐢢𐢣𐢤𐢥𐢦𐢧𐢨𐢩𐢪𐢫𐢬𐢭𐢮𐢯𐢰𐢱𐢲𐢳𐢴𐢵𐢶𐢷𐢸𐢹𐢺𐢻𐢼𐢽𐢾𐢿𐣀𐣁𐣂𐣃𐣄𐣅𐣆𐣇𐣈𐣉𐣊𐣋𐣌𐣍𐣎𐣏𐣐𐣑𐣒𐣓𐣔𐣕𐣖𐣗𐣘𐣙𐣚𐣛𐣜𐣝𐣞𐣟𐣠𐣡𐣢𐣣𐣤𐣥𐣦𐣧𐣨𐣩𐣪𐣫𐣬𐣭𐣮𐣯𐣰𐣱𐣲𐣳𐣴𐣵𐣶𐣷𐣸𐣹𐣺𐣻𐣼𐣽𐣾𐣿𐤀𐤁𐤂𐤃𐤄𐤅𐤆𐤇𐤈𐤉𐤊𐤋𐤌𐤍𐤎𐤏𐤐𐤑𐤒𐤓𐤔𐤕𐤖𐤗𐤘𐤙𐤚𐤛𐤜𐤝𐤞𐤟𐤠𐤡𐤢𐤣𐤤𐤥𐤦𐤧𐤨𐤩𐤪𐤫𐤬𐤭𐤮𐤯𐤰𐤱𐤲𐤳𐤴𐤵𐤶𐤷𐤸𐤹𐤺𐤻𐤼𐤽𐤾𐤿𐥀𐥁𐥂𐥃𐥄𐥅𐥆𐥇𐥈𐥉𐥊𐥋𐥌𐥍𐥎𐥏𐥐𐥑𐥒𐥓𐥔𐥕𐥖𐥗𐥘𐥙𐥚𐥛𐥜𐥝𐥞𐥟𐥠𐥡𐥢𐥣𐥤𐥥𐥦𐥧𐥨𐥩𐥪𐥫𐥬𐥭𐥮𐥯𐥰𐥱𐥲𐥳𐥴𐥵𐥶𐥷𐥸𐥹𐥺𐥻𐥼𐥽𐥾𐥿𐦀𐦁𐦂𐦃𐦄𐦅𐦆𐦇𐦈𐦉𐦊𐦋𐦌𐦍𐦎𐦏𐦐𐦑𐦒𐦓𐦔𐦕𐦖𐦗𐦘𐦙𐦚𐦛𐦜𐦝𐦞𐦟𐦠𐦡𐦢𐦣𐦤𐦥𐦦𐦧𐦨𐦩𐦪𐦫𐦬𐦭𐦮𐦯𐦰𐦱𐦲𐦳𐦴𐦵𐦶𐦷𐦸𐦹𐦺𐦻𐦼𐦽𐦾𐦿𐧀𐧁𐧂𐧃𐧄𐧅𐧆𐧇𐧈𐧉𐧊𐧋𐧌𐧍𐧎𐧏𐧐𐧑𐧒𐧓𐧔𐧕𐧖𐧗𐧘𐧙𐧚𐧛𐧜𐧝𐧞𐧟𐧠𐧡𐧢𐧣𐧤𐧥𐧦𐧧𐧨𐧩𐧪𐧫𐧬𐧭𐧮𐧯𐧰𐧱𐧲𐧳𐧴𐧵𐧶𐧷𐧸𐧹𐧺𐧻𐧼𐧽𐧾𐧿𐨀𐨁𐨂𐨃𐨄𐨅𐨆𐨇𐨈𐨉𐨊𐨋𐨌𐨍𐨎𐨏𐨐𐨑𐨒𐨓𐨔𐨕𐨖𐨗𐨘𐨙𐨚𐨛𐨜𐨝𐨞𐨟𐨠𐨡𐨢𐨣𐨤𐨥𐨦𐨧𐨨𐨩𐨪𐨫𐨬𐨭𐨮𐨯𐨰𐨱𐨲𐨳𐨴𐨵𐨶𐨷𐨹𐨺𐨸𐨻𐨼𐨽𐨾𐨿𐩀𐩁𐩂𐩃𐩄𐩅𐩆𐩇𐩈𐩉𐩊𐩋𐩌𐩍𐩎𐩏𐩐𐩑𐩒𐩓𐩔𐩕𐩖𐩗𐩘𐩙𐩚𐩛𐩜𐩝𐩞𐩟𐩠𐩡𐩢𐩣𐩤𐩥𐩦𐩧𐩨𐩩𐩪𐩫𐩬𐩭𐩮𐩯𐩰𐩱𐩲𐩳𐩴𐩵𐩶𐩷𐩸𐩹𐩺𐩻𐩼𐩽𐩾𐩿𐪀𐪁𐪂𐪃𐪄𐪅𐪆𐪇𐪈𐪉𐪊𐪋𐪌𐪍𐪎𐪏𐪐𐪑𐪒𐪓𐪔𐪕𐪖𐪗𐪘𐪙𐪚𐪛𐪜𐪝𐪞𐪟𐪠𐪡𐪢𐪣𐪤𐪥𐪦𐪧𐪨𐪩𐪪𐪫𐪬𐪭𐪮𐪯𐪰𐪱𐪲𐪳𐪴𐪵𐪶𐪷𐪸𐪹𐪺𐪻𐪼𐪽𐪾𐪿𐫀𐫁𐫂𐫃𐫄𐫅𐫆𐫇𐫈𐫉𐫊𐫋𐫌𐫍𐫎𐫏𐫐𐫑𐫒𐫓𐫔𐫕𐫖𐫗𐫘𐫙𐫚𐫛𐫜𐫝𐫞𐫟𐫠𐫡𐫢𐫣𐫤𐫦𐫥𐫧𐫨𐫩𐫪𐫫𐫬𐫭𐫮𐫯𐫰𐫱𐫲𐫳𐫴𐫵𐫶𐫷𐫸𐫹𐫺𐫻𐫼𐫽𐫾𐫿𐬀𐬁𐬂𐬃𐬄𐬅𐬆𐬇𐬈𐬉𐬊𐬋𐬌𐬍𐬎𐬏𐬐𐬑𐬒𐬓𐬔𐬕𐬖𐬗𐬘𐬙𐬚𐬛𐬜𐬝𐬞𐬟𐬠𐬡𐬢𐬣𐬤𐬥𐬦𐬧𐬨𐬩𐬪𐬫𐬬𐬭𐬮𐬯𐬰𐬱𐬲𐬳𐬴𐬵𐬶𐬷𐬸𐬹𐬺𐬻𐬼𐬽𐬾𐬿𐭀𐭁𐭂𐭃𐭄𐭅𐭆𐭇𐭈𐭉𐭊𐭋𐭌𐭍𐭎𐭏𐭐𐭑𐭒𐭓𐭔𐭕𐭖𐭗𐭘𐭙𐭚𐭛𐭜𐭝𐭞𐭟𐭠𐭡𐭢𐭣𐭤𐭥𐭦𐭧𐭨𐭩𐭪𐭫𐭬𐭭𐭮𐭯𐭰𐭱𐭲𐭳𐭴𐭵𐭶𐭷𐭸𐭹𐭺𐭻𐭼𐭽𐭾𐭿𐮀𐮁𐮂𐮃𐮄𐮅𐮆𐮇𐮈𐮉𐮊𐮋𐮌𐮍𐮎𐮏𐮐𐮑𐮒𐮓𐮔𐮕𐮖𐮗𐮘𐮙𐮚𐮛𐮜𐮝𐮞𐮟𐮠𐮡𐮢𐮣𐮤𐮥𐮦𐮧𐮨𐮩𐮪𐮫𐮬𐮭𐮮𐮯𐮰𐮱𐮲𐮳𐮴𐮵𐮶𐮷𐮸𐮹𐮺𐮻𐮼𐮽𐮾𐮿𐯀𐯁𐯂𐯃𐯄𐯅𐯆𐯇𐯈𐯉𐯊𐯋𐯌𐯍𐯎𐯏𐯐𐯑𐯒𐯓𐯔𐯕𐯖𐯗𐯘𐯙𐯚𐯛𐯜𐯝𐯞𐯟𐯠𐯡𐯢𐯣𐯤𐯥𐯦𐯧𐯨𐯩𐯪𐯫𐯬𐯭𐯮

Embargo

Technology: PostScript Single Master

PostScript Name: Embargo

Version: 001.000

Font Suitcase File: Embargo.bmap

Font Outline File: Embar

\\(C\\) 1999 Ray Larabie rlarabie@hotmail.com

A B C D E F G H I J K L M
A B C D E F G H I J K L M
1 2 3 4 5 6 7 8 9 0 \$ %

WHILE THE BASIC SHAPES OF
LETTERS HAVE NOT CHANGED
MUCH IN HUNDREDS OF YEARS,
THERE HAVE BEEN THOUSANDS OF
VARIATIONS ON THE THEME. THERE
ARE SPECIAL TYPES FOR

8 SPHINX OF BLACK QUARTZ JUDGE MY VOW.
10 SPHINX OF BLACK QUARTZ JUDGE MY VOW.
12 SPHINX OF BLACK QUARTZ JUDGE MY VOW.
14 SPHINX OF BLACK QUARTZ JUDGE MY VOW.
18 SPHINX OF BLACK QUARTZ JUDGE
24 SPHINX OF BLACK QUART
30 SPHINX OF BLACK Q
36 SPHINX OF BLAC
48 SPHINX OF B
60 SPHINX O
72 SPHINX

Endless Showroom

Technology: PostScript Single Master
PostScript Name: EndlessShowroom
Version: 001.000
Font Suitcase File: Endless Showroom.bmap
Font Outline File: EndleSho
\\(C) 1999 Ray Larabie - Rlarabie@hotmail.com

abcdefghijklmnopqrstuvwxyz
ABCDEFGHIJKLMNOPQRSTUVWXYZ
!@#\$%^&*~?>

While the basic shapes of letters have not changed much in hundreds of years, there have been thousands of variations on the theme. There are special types for telephone books, newspapers and magazines, and for the exclusive use of corporations. Some typefaces have a whimsical look about them while conforming to everyday

8 SPHINX OF BLACK QUARTZ JUDGE MY VOW.
10 SPHINX OF BLACK QUARTZ JUDGE MY VOW.
12 SPHINX OF BLACK QUARTZ JUDGE MY VOW.
14 SPHINX OF BLACK QUARTZ JUDGE MY VOW.
16 SPHINX OF BLACK QUARTZ JUDGE MY VOW.
18 SPHINX OF BLACK QUARTZ JUDGE MY VOW.
20 SPHINX OF BLACK QUARTZ JUDGE MY VOW.
22 SPHINX OF BLACK QUARTZ JUDGE MY VOW.
24 SPHINX OF BLACK QUARTZ JUDGE MY VOW.
26 SPHINX OF BLACK QUARTZ JUDGE MY VOW.
28 SPHINX OF BLACK QUARTZ JUDGE MY VOW.
30 SPHINX OF BLACK QUARTZ JUDGE MY VOW.
32 SPHINX OF BLACK QUARTZ JUDGE MY VOW.
34 SPHINX OF BLACK QUARTZ JUDGE MY VOW.
36 SPHINX OF BLACK QUARTZ JUDGE MY VOW.
38 SPHINX OF BLACK QUARTZ JUDGE MY VOW.
40 SPHINX OF BLACK QUARTZ JUDGE MY VOW.
42 SPHINX OF BLACK QUARTZ JUDGE MY VOW.
44 SPHINX OF BLACK QUARTZ JUDGE MY VOW.
46 SPHINX OF BLACK QUARTZ JUDGE MY VOW.
48 SPHINX OF BLACK QUARTZ JUDGE MY VOW.
50 SPHINX OF BLACK QUARTZ JUDGE MY VOW.
52 SPHINX OF BLACK QUARTZ JUDGE MY VOW.
54 SPHINX OF BLACK QUARTZ JUDGE MY VOW.
56 SPHINX OF BLACK QUARTZ JUDGE MY VOW.
58 SPHINX OF BLACK QUARTZ JUDGE MY VOW.
60 SPHINX OF BLACK QUARTZ JUDGE MY VOW.
62 SPHINX OF BLACK QUARTZ JUDGE MY VOW.
64 SPHINX OF BLACK QUARTZ JUDGE MY VOW.
66 SPHINX OF BLACK QUARTZ JUDGE MY VOW.
68 SPHINX OF BLACK QUARTZ JUDGE MY VOW.
70 SPHINX OF BLACK QUARTZ JUDGE MY VOW.
72 SPHINX OF BLACK QUARTZ JUDGE MY VOW.

Engelbrecht

Technology: PostScript Single Master
PostScript Name: Engelbrecht
Version: 001.000
Font Suitcase File: Engelbrecht.bmap
Font Outline File: Engb
Copyright (c) Ray Larabee, 2000. All rights reserved.

ABCDEFGHIJKLMNOPQRSTUVWXYZ

ABCDEFGHIJKLMNOPQRSTUVWXYZ

1234567890 \$%&[.,:;#!?)

WHILE THE BASIC SHAPES OF LETTERS HAVE NOT CHANGED MUCH IN HUNDREDS OF YEARS, THERE HAVE BEEN THOUSANDS OF VARIATIONS ON THE THEME. THERE ARE SPECIAL TYPES FOR TELEPHONE BOOKS, NEWSPAPERS AND MAGAZINES, AND FOR THE EXCLUSIVE USE OF CORPORATIONS. SOME TYPEFACES HAVE A LEISURELY LOOK ABOUT THEM WHILE CONFORMING TO EVERYDAY TYPOGRAPHIC EXPECTATIONS. OTHERS WERE BORN WITH UNUSUAL, YET CASUAL, SHAPES AND MAKE THE BEST OF IT.

8 SPHINX OF BLACK QUARTZ JUDGE MY VOW.

10 SPHINX OF BLACK QUARTZ JUDGE MY VOW.

12 SPHINX OF BLACK QUARTZ JUDGE MY VOW.

14 SPHINX OF BLACK QUARTZ JUDGE MY VOW.

18 SPHINX OF BLACK QUARTZ JUDGE MY VOW.

24 SPHINX OF BLACK QUARTZ JUDGE MY VOW.

30 SPHINX OF BLACK QUARTZ JUDGE MY VOW.

36 SPHINX OF BLACK QUARTZ JUDGE MY VOW.

48 SPHINX OF BLACK QUARTZ JUDGE

60 SPHINX OF BLACK QUARTZ J

Engbrechtre-Italic

Technology: PostScript Single Master
PostScript Name: Engbrechtre-Italic
Version: 001.000
Font Suitcase File: Engbrechtre-Italic.bmap
Font Outline File: EngbIta
Copyright \(\c\) Ray Larabie, 2000. All rights reserved.

ABCDEFGHIJKLMNOPQRSTUVWXYZ
ABCDEFGHIJKLMNOPQRSTUVWXYZ
1234567890 \$%&[.,:#!?]

WHILE THE BASIC SHAPES OF LETTERS HAVE NOT CHANGED MUCH IN HUNDREDS OF YEARS, THERE HAVE BEEN THOUSANDS OF VARIATIONS ON THE THEME. THERE ARE SPECIAL TYPES FOR TELEPHONE BOOKS, NEWSPAPERS AND MAGAZINES, AND FOR THE EXCLUSIVE USE OF CORPORATIONS. SOME TYPEFACES HAVE A LEISURELY LOOK ABOUT THEM WHILE CONFORMING TO EVERYDAY TYPOGRAPHIC EXPECTATIONS. OTHERS WERE BORN WITH UNUSUAL, YET CASUAL, SHAPES AND MAKE THE BEST OF IT.

8 *SPHINX OF BLACK QUARTZ JUDGE MY VOW.*

10 *SPHINX OF BLACK QUARTZ JUDGE MY VOW.*

12 *SPHINX OF BLACK QUARTZ JUDGE MY VOW.*

14 *SPHINX OF BLACK QUARTZ JUDGE MY VOW.*

18 *SPHINX OF BLACK QUARTZ JUDGE MY VOW.*

24 *SPHINX OF BLACK QUARTZ JUDGE MY VOW.*

30 *SPHINX OF BLACK QUARTZ JUDGE MY VOW.*

36 *SPHINX OF BLACK QUARTZ JUDGE MY VOW.*

48 *SPHINX OF BLACK QUARTZ JUDGE MY*

60 *SPHINX OF BLACK QUARTZ JUD*

72 *SPHINX OF BLACK QUARTZ*

Engebrechtre-Bold

Technology: PostScript Single Master
PostScript Name: Engebrechtre-Bold
Version: 001.000
Font Suitcase File: Engebrechtre-Bold.bmap
Font Outline File: EngebBol
Copyright \(\c\) Ray Larabie, 2000. All rights reserved.

ABCDEFGHIJKLMNOPQRSTUVWXYZ
ABCDEFGHIJKLMNOPQRSTUVWXYZ
1234567890 \$%&[.,:#!?]

WHILE THE BASIC SHAPES OF LETTERS HAVE NOT CHANGED MUCH IN HUNDREDS OF YEARS, THERE HAVE BEEN THOUSANDS OF VARIATIONS ON THE THEME. THERE ARE SPECIAL TYPES FOR TELEPHONE BOOKS, NEWSPAPERS AND MAGAZINES, AND FOR THE EXCLUSIVE USE OF CORPORATIONS. SOME TYPEFACES HAVE A LEISURELY LOOK ABOUT THEM WHILE CONFORMING TO EVERYDAY TYPOGRAPHIC EXPECTATIONS. OTHERS WERE BORN WITH UNUSUAL, YET CASUAL, SHAPES AND MAKE THE BEST OF IT.

8 **SPHINX OF BLACK QUARTZ JUDGE MY VOW.**
10 **SPHINX OF BLACK QUARTZ JUDGE MY VOW.**
12 **SPHINX OF BLACK QUARTZ JUDGE MY VOW.**
14 **SPHINX OF BLACK QUARTZ JUDGE MY VOW.**
18 **SPHINX OF BLACK QUARTZ JUDGE MY VOW.**
24 **SPHINX OF BLACK QUARTZ JUDGE MY VOW.**
30 **SPHINX OF BLACK QUARTZ JUDGE MY VOW.**
36 **SPHINX OF BLACK QUARTZ JUDGE MY VOW**
48 **SPHINX OF BLACK QUARTZ JUDG**
60 **SPHINX OF BLACK QUART**

Engelbrecht-Bold Italic

Technology: PostScript Single Master
PostScript Name: Engelbrecht-BoldItalic
Version: 001.000
Font Suitcase File: Engelbrecht-Bold Italic.bmap
Font Outline File: EngbBolIta
Copyright (c) Ray Larabee, 2000. All rights reserved.

ABCDEFGHIJKLMNOPQRSTUVWXYZ

ABCDEFGHIJKLMNOPQRSTUVWXYZ

1234567890 \$%&[.,:;#!?)

WHILE THE BASIC SHAPES OF LETTERS HAVE NOT CHANGED MUCH IN HUNDREDS OF YEARS, THERE HAVE BEEN THOUSANDS OF VARIATIONS ON THE THEME. THERE ARE SPECIAL TYPES FOR TELEPHONE BOOKS, NEWSPAPERS AND MAGAZINES, AND FOR THE EXCLUSIVE USE OF CORPORATIONS. SOME TYPEFACES HAVE A LEISURELY LOOK ABOUT THEM WHILE CONFORMING TO EVERYDAY TYPOGRAPHIC EXPECTATIONS. OTHERS WERE BORN WITH UNUSUAL, YET CASUAL, SHAPES AND MAKE THE BEST OF IT.

8 ***SPHINX OF BLACK QUARTZ JUDGE MY VOW.***

10 ***SPHINX OF BLACK QUARTZ JUDGE MY VOW.***

12 ***SPHINX OF BLACK QUARTZ JUDGE MY VOW.***

14 ***SPHINX OF BLACK QUARTZ JUDGE MY VOW.***

18 ***SPHINX OF BLACK QUARTZ JUDGE MY VOW.***

24 ***SPHINX OF BLACK QUARTZ JUDGE MY VOW.***

30 ***SPHINX OF BLACK QUARTZ JUDGE MY VOW.***

36 ***SPHINX OF BLACK QUARTZ JUDGE MY VOW.***

48 ***SPHINX OF BLACK QUARTZ JUDGE M***

60 ***SPHINX OF BLACK QUARTZ J***

Engelbrecht-Expanded

Technology: PostScript Single Master
PostScript Name: Engelbrecht-Expanded
Version: 001.000
Font Suitcase File: Engelbrecht-Expanded.bmap
Font Outline File: EngelExp
Copyright (c) Ray Larabee, 2000. All rights reserved.

ABCDEFGHIJKLMNOPQRSTUVWXYZ
ABCDEFGHIJKLMNOPQRSTUVWXYZ
1234567890 \$%&[.,:;!?)

WHILE THE BASIC SHAPES OF LETTERS HAVE NOT CHANGED MUCH IN HUNDREDS OF YEARS, THERE HAVE BEEN THOUSANDS OF VARIATIONS ON THE THEME. THERE ARE SPECIAL TYPES FOR TELEPHONE BOOKS, NEWSPAPERS AND MAGAZINES, AND FOR THE EXCLUSIVE USE OF CORPORATIONS. SOME TYPEFACES HAVE A LEISURELY LOOK ABOUT THEM WHILE CONFORMING TO EVERYDAY TYPOGRAPHIC EXPECTATIONS.

8 SPHINX OF BLACK QUARTZ JUDGE MY VOW.

10 SPHINX OF BLACK QUARTZ JUDGE MY VOW.

12 SPHINX OF BLACK QUARTZ JUDGE MY VOW.

14 SPHINX OF BLACK QUARTZ JUDGE MY VOW.

18 SPHINX OF BLACK QUARTZ JUDGE MY VOW.

24 SPHINX OF BLACK QUARTZ JUDGE MY VOW.

30 SPHINX OF BLACK QUARTZ JUDGE MY V

36 SPHINX OF BLACK QUARTZ JUDGE

48 SPHINX OF BLACK QUART

60 SPHINX OF BLACK Q

72 SPHINX OF BLAC

Engelbrecht-Expanded Italic

Technology: PostScript Single Master
PostScript Name: Engelbrecht-ExpandedItalic
Version: 001.000
Font Suitcase File: Engelbrecht-ExpIta.bmap
Font Outline File: EngelbExpIta
Copyright \(\c\) Ray Larabee, 2000. All rights reserved.

*ABCDEFGHIJKLMNOPQRSTUVWXYZ
ABCDEFGHIJKLMNOPQRSTUVWXYZ
1234567890 \$%&[.,:;!#?]*

*WHILE THE BASIC SHAPES OF LETTERS HAVE NOT CHANGED MUCH IN
HUNDREDS OF YEARS, THERE HAVE BEEN THOUSANDS OF VARIATIONS ON THE
THEME. THERE ARE SPECIAL TYPES FOR TELEPHONE BOOKS, NEWSPAPERS AND
MAGAZINES, AND FOR THE EXCLUSIVE USE OF CORPORATIONS. SOME TYPEFACES
HAVE A LEISURELY LOOK ABOUT THEM WHILE CONFORMING TO EVERYDAY
TYPOGRAPHIC EXPECTATIONS. OTHERS WERE BORN WITH UNUSUAL, YET*

8 *SPHINX OF BLACK QUARTZ JUDGE MY VOW.*

10 *SPHINX OF BLACK QUARTZ JUDGE MY VOW.*

12 *SPHINX OF BLACK QUARTZ JUDGE MY VOW.*

14 *SPHINX OF BLACK QUARTZ JUDGE MY VOW.*

18 *SPHINX OF BLACK QUARTZ JUDGE MY VOW.*

24 *SPHINX OF BLACK QUARTZ JUDGE MY VOW.*

30 *SPHINX OF BLACK QUARTZ JUDGE MY VOW.*

36 *SPHINX OF BLACK QUARTZ JUDGE MY*

48 *SPHINX OF BLACK QUARTZ*

60 *SPHINX OF BLACK QU*

72 *SPHINX OF BLACK*

Engebrechtre-Expanded Bold

Technology: PostScript Single Master
PostScript Name: Engebrechtre-ExpandedBold
Version: 001.000
Font Suitcase File: Engebrechtre-ExpBold.bmap
Font Outline File: EngebExpBol
Copyright \(\c\) Ray Larabie, 2000. All rights reserved.

**ABCDEFGHIJKLMNOPQRSTUVWXYZ
ABCDEFGHIJKLMNOPQRSTUVWXYZ
1234567890 \$%&[.,:;#!?]**

**WHILE THE BASIC SHAPES OF LETTERS HAVE NOT CHANGED MUCH
IN HUNDREDS OF YEARS, THERE HAVE BEEN THOUSANDS OF
VARIATIONS ON THE THEME. THERE ARE SPECIAL TYPES FOR
TELEPHONE BOOKS, NEWSPAPERS AND MAGAZINES, AND FOR THE
EXCLUSIVE USE OF CORPORATIONS. SOME TYPEFACES HAVE A
LEISURELY LOOK ABOUT THEM WHILE CONFORMING TO EVERYDAY**

8 SPHINX OF BLACK QUARTZ JUDGE MY VOW.

10 SPHINX OF BLACK QUARTZ JUDGE MY VOW.

12 SPHINX OF BLACK QUARTZ JUDGE MY VOW.

14 SPHINX OF BLACK QUARTZ JUDGE MY VOW.

18 SPHINX OF BLACK QUARTZ JUDGE MY VOW.

24 SPHINX OF BLACK QUARTZ JUDGE MY VOW.

30 SPHINX OF BLACK QUARTZ JUDGE MY

36 SPHINX OF BLACK QUARTZ JUD

48 SPHINX OF BLACK QUA

60 SPHINX OF BLACK

Engelbrecht-Expanded Bold Italic

Technology: PostScript Single Master
PostScript Name: Engelbrecht-ExpandedBoldItalic
Version: 001.000
Font Suitcase File: Engelbrecht-ExpBolIta.bmap
Font Outline File: EngExpBolIta
Copyright (c) Ray Larabee, 2000. All rights reserved.

***ABCDEFGHIJKLMNOPQRSTUVWXYZ
ABCDEFGHIJKLMNOPQRSTUVWXYZ
1234567890 \$%&[.,:;#!?]***

***WHILE THE BASIC SHAPES OF LETTERS HAVE NOT CHANGED MUCH IN
HUNDREDS OF YEARS, THERE HAVE BEEN THOUSANDS OF VARIATIONS ON
THE THEME. THERE ARE SPECIAL TYPES FOR TELEPHONE BOOKS,
NEWSPAPERS AND MAGAZINES, AND FOR THE EXCLUSIVE USE OF
CORPORATIONS. SOME TYPEFACES HAVE A LEISURELY LOOK ABOUT THEM
WHILE CONFORMING TO EVERYDAY TYPOGRAPHIC EXPECTATIONS. OTHERS***

8 ***SPHINX OF BLACK QUARTZ JUDGE MY VOW.***

10 ***SPHINX OF BLACK QUARTZ JUDGE MY VOW.***

12 ***SPHINX OF BLACK QUARTZ JUDGE MY VOW.***

14 ***SPHINX OF BLACK QUARTZ JUDGE MY VOW.***

18 ***SPHINX OF BLACK QUARTZ JUDGE MY VOW.***

24 ***SPHINX OF BLACK QUARTZ JUDGE MY VOW.***

30 ***SPHINX OF BLACK QUARTZ JUDGE MY VO***

36 ***SPHINX OF BLACK QUARTZ JUDGE***

48 ***SPHINX OF BLACK QUARTZ***

60 ***SPHINX OF BLACK Q***

Ennobled Pet

Technology: PostScript Single Master

PostScript Name: EnnobledPet

Version: 001.000

Font Suitcase File: Ennobled Pet.bmap

Font Outline File: EnnobPet

\\(C) 1999 Ray Larabie - rlarabie@hotmail.com

A B C D E F G H I J K L M N O P Q R
A B C D E F G H I J K L M N O P Q R
1 2 3 4 5 6 7 8 9 0 S T U V W X Y Z

AA
AA
AA
AA
AA
AA

8 *****
10 *****
12 *****
14 *****
18 SPHINX OF BLACK GUARTEZ
24 SPHINX OF BLACK GUARTEZ
30 SPHINX OF BLACK GUARTEZ
36 SPHINX OF BLAC
48 SPHINX OF BLAC
60 SPHINX OF B
72 SPHINX OF

Ethnocentric

Technology: PostScript Single Master
PostScript Name: Ethnocentric
Version: 001.000
Font Suitcase File: Ethnocentric.bmap
Font Outline File: Ethno
\\(C) 1999 Ray Larabie rlarabie@hotmail.com

A B C D E F G H I J K L M N O
A B C D E F G H I J K L M N O
1 2 3 4 5 6 7 8 9 0 \$ % & [. , i : #

**WHILE THE BASIC SHAPES OF LETTERS
HAVE NOT CHANGED MUCH IN
HUNDREDS OF YEARS, THERE HAVE
BEEN THOUSANDS OF VARIATIONS ON
THE THEME. THERE ARE SPECIAL TYPES
FOR TELEPHONE BOOKS, NEWSPAPERS**

8 **SPHINX OF BLACK QUARTZ JUDGE MY VOW.**
10 **SPHINX OF BLACK QUARTZ JUDGE MY VOW.**
12 **SPHINX OF BLACK QUARTZ JUDGE MY VOW.**
14 **SPHINX OF BLACK QUARTZ JUDGE MY VOW.**
18 **SPHINX OF BLACK QUARTZ JUDGE M**
24 **SPHINX OF BLACK QUARTZ**
30 **SPHINX OF BLACK QU**
36 **SPHINX OF BLACK**
48 **SPHINX OF BL**
60 **SPHINX OF**

Euphorigenic

Technology: PostScript Single Master
PostScript Name: Euphorigenic
Version: 001.000
Font Suitcase File: Euphorigenic.bmap
Font Outline File: Eupho
\\(C) 1999 Ray Larabie - rlarabie@hotmail.com

abcdefghijklmnopqrstuvwxyz
ABCDEFGHIJKLMNOPQRSTUVWXYZ
1234567890 & (.,:;!?)

While the basic shapes of letters have not changed much in hundreds of years, there have been thousands of variations on the theme. There are special types for telephone books, newspapers and magazines, and for the exclusive use of corporations. Some typefaces have a leisurely look about them while conforming to everyday typographic expectations. Others were born with unusual, yet casual, shapes and make the best of it.

8 Sphinx of black quartz judge my vow.

10 Sphinx of black quartz judge my vow.

12 Sphinx of black quartz judge my vow.

14 Sphinx of black quartz judge my vow.

18 Sphinx of black quartz judge my vow.

24 Sphinx of black quartz judge my vow.

30 Sphinx of black quartz judge my vow.

36 Sphinx of black quartz judge my vow.

48 Sphinx of black quartz judge

60 Sphinx of black quartz

72 Sphinx of black qua

Eye Rhyme

Technology: PostScript Single Master

PostScript Name: EyeRhyme

Version: 001.000

Font Suitcase File: Eye Rhyme.bmap

Font Outline File: EyeRhy

\\(C) 1999 Ray Larabie - rlarabie@hotmail.com

abcdefghijklmnopqrstuvwxyz

ABCDEFGHIJKLMNOPQRSTUVWXYZ

1234567890 \$%&(.,:; !?)

While the basic shapes of letters have not changed much in hundreds of years, there have been thousands of variations on the theme. There are special types for telephone books, newspapers and magazines, and for the exclusive use of corporations. Some typefaces have a leisurely look about them while conforming to everyday typographic expectations. Others were born with unusual, yet casual, shapes and make the best of it.

8 *Sphinx of black quartz judge my vow.*

10 *Sphinx of black quartz judge my vow.*

12 *Sphinx of black quartz judge my vow.*

14 *Sphinx of black quartz judge my vow.*

18 *Sphinx of black quartz judge my vow.*

24 *Sphinx of black quartz judge my vow.*

30 *Sphinx of black quartz judge my vow.*

36 *Sphinx of black quartz judge my vow.*

48 *Sphinx of black quartz judge my vow.*

60 *Sphinx of black quartz judge my vow*

72 *Sphinx of black quartz judge m*

Fabian

Technology: PostScript Single Master

PostScript Name: Fabian

Version: 001.000

Font Suitcase File: Fabian.bmap

Font Outline File: Fabia

\\(C) 2000 Ray Larabie - rlarabie@hotmail.com

***abcdefghijklmnopqrstuvwxyz
ABCDEFGHIJKLMNOPQRSTUVWXYZ
1234567890 \$%&[.,:;#!?]***

While the basic shapes of letters have not changed much in hundreds of years, there have been thousands of variations on the theme. There are special types for telephone books, newspapers and magazines, and for the exclusive use of corporations. Some typefaces have a leisurely look about them while conforming to everyday typographic expectations. Others were born with unusual,

8 *Sphinx of black quartz judge my vow.*

10 *Sphinx of black quartz judge my vow.*

12 *Sphinx of black quartz judge my vow.*

14 *Sphinx of black quartz judge my vow.*

18 *Sphinx of black quartz judge my vow.*

24 *Sphinx of black quartz judge my vow.*

30 *Sphinx of black quartz judge my vow.*

36 *Sphinx of black quartz judge my*

48 *Sphinx of black quartz ju*

60 *Sphinx of black qua*

72 *Sphinx of black*

Fadgod

Technology: PostScript Single Master
PostScript Name: Fadgod
Version: 001.000
Font Suitcase File: Fadgod.bmap
Font Outline File: Fadgo
\(c) 1999 Ray Larabie rlarabie@hotmail.com

A B C D E F G H I J K L M N O P Q R S T U V W
A B C D E F G H I J K L M N O P Q R S T U
1 2 3 4 5 6 7 8 9 0 < . , : ; ' >

While the basic shapes of letters have not changed much in hundreds of years, there have been thousands of variations on the theme. There are special types for telephone books, newspapers and magazines, and for the exclusive use of corporations. Some typefaces have a leisurely look about them while conforming to everyday

8 SPHINX OF BLACK QUARTZ JUDGE MY VOW.

10 SPHINX OF BLACK QUARTZ JUDGE MY VOW.

12 SPHINX OF BLACK QUARTZ JUDGE MY VOW.

14 SPHINX OF BLACK QUARTZ JUDGE MY VOW.

18 SPHINX OF BLACK QUARTZ JUDGE MY VOW.

24 SPHINX OF BLACK QUARTZ JUDGE MY VOW.

30 SPHINX OF BLACK QUARTZ JUDGE MY

36 SPHINX OF BLACK QUARTZ JUDGE

48 SPHINX OF BLACK QUARTZ

60 SPHINX OF BLACK

Failed Attempt

Technology: PostScript Single Master
PostScript Name: FailedAttempt
Version: 001.000
Font Suitcase File: Failed Attempt.bmap
Font Outline File: FaileAtt
\\(c) 1999 Ray Larabie - freeware - rlarabie@hotmail.com

abcdefghijklmnopqrstuvwxyz
ABCDEFGHIJKLMNOPQRSTUVWXYZ
1234567890 \$%&'()*~+-^_`{|}~

While the basic shapes of letters have not changed much in hundreds of years, there have been thousands of variations on the theme. There are special types for telephone books, newspapers and magazines, and for the exclusive use of corporations. Some typefaces have a leisurely look about them while conforming to everyday typographic expectations. Others were born with unusual, yet casual, shapes and make the best of it.

8 Sphinx of black quartz judge my vow.
10 Sphinx of black quartz judge my vow.
12 Sphinx of black quartz judge my vow.
14 Sphinx of black quartz judge my vow.
18 Sphinx of black quartz judge my vow.
24 Sphinx of black quartz judge my vow.
30 Sphinx of black quartz judge my vow.
36 Sphinx of black quartz judge my vow.
48 Sphinx of black quartz judge m
60 Sphinx of black quartz j
72 Sphinx of black quar

Fake Receipt

Technology: PostScript Single Master
PostScript Name: FakeReceipt
Version: 001.000
Font Suitcase File: Fake Receipt.bmap
Font Outline File: FakeRec
\\(C) 1999 Ray Larabie rlarabie@hotmail.com

ABCDEFGHIJKLMNOPQRSTUVWXYZ
ABCDEFGHIJKLMNOPQRSTUVWXYZ
1234567890 \$%& (. , ; : # ! ?)

WHILE THE BASIC SHAPES OF LETTERS HAVE NOT
CHANGED MUCH IN HUNDREDS OF YEARS, THERE HAVE
BEEN THOUSANDS OF VARIATIONS ON THE THEME. THERE
ARE SPECIAL TYPES FOR TELEPHONE BOOKS,
NEWSPAPERS AND MAGAZINES, AND FOR THE EXCLUSIVE
USE OF CORPORATIONS. SOME TYPEFACES HAVE A

8 SPHINX OF BLACK QUARTZ JUDGE MY VOW.
10 SPHINX OF BLACK QUARTZ JUDGE MY VOW.
12 SPHINX OF BLACK QUARTZ JUDGE MY VOW.
14 SPHINX OF BLACK QUARTZ JUDGE MY VOW.
18 SPHINX OF BLACK QUARTZ JUDGE MY VOW.
24 SPHINX OF BLACK QUARTZ JUDGE MY VOW
30 SPHINX OF BLACK QUARTZ JUDGE
36 SPHINX OF BLACK QUARTZ
48 SPHINX OF BLACK Q
60 SPHINX OF BLAC
72 SPHINX OF B

Field Day Filter

Technology: PostScript Single Master
PostScript Name: FieldDayFilter
Version: 001.000
Font Suitcase File: Field Day Filter.bmap
Font Outline File: FieldDayFil
(C) 1999 Ray Larabie rlarabie@hotmail.com

abcdefghijklmnopqrstuvwxyz
ABCDEFGHIJKLMNOPQRSTUVWXYZ
1234567890 \$%&(!,:;#!?)

While the basic shapes of letters have not changed much in hundreds of years, there have been thousands of variations on the theme. There are special types for telephone books, newspapers and magazines, and for the exclusive use of corporations. Some typefaces have a leisurely look about them while conforming to everyday typographic expectations. Others

8 Sphinx of black quartz judge my vow.
10 Sphinx of black quartz judge my vow.
12 Sphinx of black quartz judge my vow.
14 Sphinx of black quartz judge my vow.
18 Sphinx of black quartz judge my vow.
24 Sphinx of black quartz judge my vow.
30 Sphinx of black quartz judge my vow.
36 Sphinx of black quartz judge m
48 Sphinx of black quartz
60 Sphinx of black qu
72 Sphinx of black

First Blind

Technology: PostScript Single Master

PostScript Name: FirstBlind

Version: 001.000

Font Suitcase File: First Blind.bmap

Font Outline File: FirstBli

\\(C)1999 Ray Larabie - rlarabie@hotmail.com

A B C D E F G H I

A B C D E F G H I

1 2 3 4 5 6 7 8 9 0

**WHILE THE BASIC
SHAPES OF LETTERS
HAVE NOT CHANGED
MUCH IN HUNDREDS OF
YEARS, THERE HAVE
BEEN THOUSANDS OF**

8 **SPHINX OF BLACK QUARTZ JUDGE MY VOW.**
10 **SPHINX OF BLACK QUARTZ JUDGE MY VO**
12 **SPHINX OF BLACK QUARTZ JUDGE**
14 **SPHINX OF BLACK QUARTZ JU**
18 **SPHINX OF BLACK QUA**
24 **SPHINX OF BLAC**
30 **SPHINX OF BL**
36 **SPHINX OF**
48 **SPHINX**
60 **SPHIN**
72 **SPHI**

Fluoride Beings

Technology: PostScript Single Master
PostScript Name: FluorideBeings
Version: 001.000
Font Suitcase File: Fluoride Beings.bmap
Font Outline File: FluorBei
\\(C) 1998 Ray Larabie rlarabie@hotmail.com

**abcdefghijklmnopqrstuv
ABCDEFGHIJKLMNPO
1234567890 \$%&'()*+,-./:;
=>?@**

**While the basic shapes of letters have not
changed much in hundreds of years, there have
been thousands of variations on the theme. There
are special types for telephone books,
newspapers and magazines, and for the exclusive
use of corporations. Some typefaces have a**

8 **Sphinx of black quartz judge my vow.**
10 **Sphinx of black quartz judge my vow.**
12 **Sphinx of black quartz judge my vow.**
14 **Sphinx of black quartz judge my vow.**
18 **Sphinx of black quartz judge my vow.**
24 **Sphinx of black quartz judge my vo**
30 **Sphinx of black quartz judge**
36 **Sphinx of black quartz j**
48 **Sphinx of black qu**
60 **Sphinx of blac**

Forgotten Futurist

Technology: PostScript Single Master
PostScript Name: ForgottenFuturist
Version: 001.000
Font Suitcase File: Forgotten Futurist.bmap
Font Outline File: ForgoFut
\\(C) 1999 Ray Larabie rlarabie@hotmail.com

abcdefghijklmnopqrstuvwxyz

ABCDEFGHIJKLMNOPQRSTUVWXYZ

1234567890 \$%&@.,:;!?)

While the basic shapes of letters have not changed much in hundreds of years, there have been thousands of variations on the theme. There are special types for telephone books, newspapers and magazines, and for the exclusive use of corporations. Some typefaces have a leisurely look about them while conforming to everyday typographic expectations. Others were born with unusual, yet casual, shapes and make the best of it.

8 Sphinx of black quartz judge my vow.

10 Sphinx of black quartz judge my vow.

12 Sphinx of black quartz judge my vow.

14 Sphinx of black quartz judge my vow.

18 Sphinx of black quartz judge my vow.

24 Sphinx of black quartz judge my vow.

30 Sphinx of black quartz judge my vow.

36 Sphinx of black quartz judge my vow.

48 Sphinx of black quartz judge m

60 Sphinx of black quartz ju

Forgotten Futurist-College

Technology: PostScript Single Master
PostScript Name: ForgottenFuturist-College
Version: 001.000
Font Suitcase File: Forgotten Futurist-College.bmap
Font Outline File: ForgoFutCol
Copyright \(\c\) Ray Larabie, 1999. All rights reserved.

abcdefghijklmnopqrstuvwxyz
ABCDEFGHIJKLMNOPQRSTUVWXYZ
1234567890 \$%&{.,:#!?}

While the basic shapes of letters have not changed much in hundreds of years, there have been thousands of variations on the theme. There are special types for telephone books, newspapers and magazines, and for the exclusive use of corporations. Some typefaces have a leisurely look about them while conforming to everyday typographic expectations. Others were born with unusual, yet casual, shapes and make the best of it.

8 Sphinx of black quartz judge my vow.
10 Sphinx of black quartz judge my vow.
12 Sphinx of black quartz judge my vow.
14 Sphinx of black quartz judge my vow.
18 Sphinx of black quartz judge my vow.
24 Sphinx of black quartz judge my vow.
30 Sphinx of black quartz judge my vow.
36 Sphinx of black quartz judge my vow.
48 Sphinx of black quartz judge m
60 Sphinx of black quartz ju
72 Sphinx of black quart

Forgotten Futurist-Rotten

Technology: PostScript Single Master
PostScript Name: ForgottenFuturist-Rotten
Version: 001.000
Font Suitcase File: Forgotten Futurist-Rotten.bmap
Font Outline File: ForgoFutRot
Copyright \(\c\) Ray Larabie, 1999. All rights reserved.

abcdefghijklmnopqrstuvwxyz
ABCDEFGHIJKLMNOPQRSTUVWXYZ
1234567890 \$%&(.,:;#!?)

While the basic shapes of letters have not changed much in hundreds of years, there have been thousands of variations on the theme. There are special types for telephone books, newspapers and magazines, and for the exclusive use of corporations. Some typefaces have a leisurely look about them while conforming to everyday typographic expectations. Others were born with unusual, yet casual, shapes and make the best of it.

8 Sphinx of black quartz judge my vow.
10 Sphinx of black quartz judge my vow.
12 Sphinx of black quartz judge my vow.
14 Sphinx of black quartz judge my vow.
18 Sphinx of black quartz judge my vow.
24 Sphinx of black quartz judge my vow.
30 Sphinx of black quartz judge my vow.
36 Sphinx of black quartz judge my vow.
48 Sphinx of black quartz judge my
60 Sphinx of black quartz jud
72 Sphinx of black quart

Forgotten Futurist-Shadow

Technology: PostScript Single Master
PostScript Name: ForgottenFuturist-Shadow
Version: 001.000
Font Suitcase File: Forgotten Futurist-Shadow.bmap
Font Outline File: ForgoFutSha
Copyright \(\c\) Ray Larabie, 1999. All rights reserved.

abcdefghijklmnopqrstuvwxyz
ABCDEFGHIJKLMNOPQRSTUVWXYZ
1234567890 %&(€#129;#130;#131;#132;#133;#134;#135;#136;#137;#138;#139;#140;#141;#142;#143;#144;#145;#146;#147;#148;#149;#150;#151;#152;#153;#154;#155;#156;#157;#158;#159;#160;#161;#162;#163;#164;#165;#166;#167;#168;#169;#170;#171;#172;#173;#174;#175;#176;#177;#178;#179;#180;#181;#182;#183;#184;#185;#186;#187;#188;#189;#190;#191;#192;#193;#194;#195;#196;#197;#198;#199;#200;#201;#202;#203;#204;#205;#206;#207;#208;#209;#210;#211;#212;#213;#214;#215;#216;#217;#218;#219;#220;#221;#222;#223;#224;#225;#226;#227;#228;#229;#230;#231;#232;#233;#234;#235;#236;#237;#238;#239;#240;#241;#242;#243;#244;#245;#246;#247;#248;#249;#250;#251;#252;#253;#254;#255;#256;#257;#258;#259;#260;#261;#262;#263;#264;#265;#266;#267;#268;#269;#270;#271;#272;#273;#274;#275;#276;#277;#278;#279;#280;#281;#282;#283;#284;#285;#286;#287;#288;#289;#290;#291;#292;#293;#294;#295;#296;#297;#298;#299;#300;#301;#302;#303;#304;#305;#306;#307;#308;#309;#310;#311;#312;#313;#314;#315;#316;#317;#318;#319;#320;#321;#322;#323;#324;#325;#326;#327;#328;#329;#330;#331;#332;#333;#334;#335;#336;#337;#338;#339;#340;#341;#342;#343;#344;#345;#346;#347;#348;#349;#350;#351;#352;#353;#354;#355;#356;#357;#358;#359;#360;#361;#362;#363;#364;#365;#366;#367;#368;#369;#370;#371;#372;#373;#374;#375;#376;#377;#378;#379;#380;#381;#382;#383;#384;#385;#386;#387;#388;#389;#390;#391;#392;#393;#394;#395;#396;#397;#398;#399;#400;#401;#402;#403;#404;#405;#406;#407;#408;#409;#410;#411;#412;#413;#414;#415;#416;#417;#418;#419;#420;#421;#422;#423;#424;#425;#426;#427;#428;#429;#430;#431;#432;#433;#434;#435;#436;#437;#438;#439;#440;#441;#442;#443;#444;#445;#446;#447;#448;#449;#450;#451;#452;#453;#454;#455;#456;#457;#458;#459;#460;#461;#462;#463;#464;#465;#466;#467;#468;#469;#470;#471;#472;#473;#474;#475;#476;#477;#478;#479;#480;#481;#482;#483;#484;#485;#486;#487;#488;#489;#490;#491;#492;#493;#494;#495;#496;#497;#498;#499;#500;#501;#502;#503;#504;#505;#506;#507;#508;#509;#510;#511;#512;#513;#514;#515;#516;#517;#518;#519;#520;#521;#522;#523;#524;#525;#526;#527;#528;#529;#530;#531;#532;#533;#534;#535;#536;#537;#538;#539;#540;#541;#542;#543;#544;#545;#546;#547;#548;#549;#550;#551;#552;#553;#554;#555;#556;#557;#558;#559;#560;#561;#562;#563;#564;#565;#566;#567;#568;#569;#570;#571;#572;#573;#574;#575;#576;#577;#578;#579;#580;#581;#582;#583;#584;#585;#586;#587;#588;#589;#590;#591;#592;#593;#594;#595;#596;#597;#598;#599;#600;#601;#602;#603;#604;#605;#606;#607;#608;#609;#610;#611;#612;#613;#614;#615;#616;#617;#618;#619;#620;#621;#622;#623;#624;#625;#626;#627;#628;#629;#630;#631;#632;#633;#634;#635;#636;#637;#638;#639;#640;#641;#642;#643;#644;#645;#646;#647;#648;#649;#650;#651;#652;#653;#654;#655;#656;#657;#658;#659;#660;#661;#662;#663;#664;#665;#666;#667;#668;#669;#670;#671;#672;#673;#674;#675;#676;#677;#678;#679;#680;#681;#682;#683;#684;#685;#686;#687;#688;#689;#690;#691;#692;#693;#694;#695;#696;#697;#698;#699;#700;#701;#702;#703;#704;#705;#706;#707;#708;#709;#710;#711;#712;#713;#714;#715;#716;#717;#718;#719;#720;#721;#722;#723;#724;#725;#726;#727;#728;#729;#730;#731;#732;#733;#734;#735;#736;#737;#738;#739;#740;#741;#742;#743;#744;#745;#746;#747;#748;#749;#750;#751;#752;#753;#754;#755;#756;#757;#758;#759;#760;#761;#762;#763;#764;#765;#766;#767;#768;#769;#770;#771;#772;#773;#774;#775;#776;#777;#778;#779;#780;#781;#782;#783;#784;#785;#786;#787;#788;#789;#790;#791;#792;#793;#794;#795;#796;#797;#798;#799;#800;#801;#802;#803;#804;#805;#806;#807;#808;#809;#810;#811;#812;#813;#814;#815;#816;#817;#818;#819;#820;#821;#822;#823;#824;#825;#826;#827;#828;#829;#830;#831;#832;#833;#834;#835;#836;#837;#838;#839;#840;#841;#842;#843;#844;#845;#846;#847;#848;#849;#850;#851;#852;#853;#854;#855;#856;#857;#858;#859;#860;#861;#862;#863;#864;#865;#866;#867;#868;#869;#870;#871;#872;#873;#874;#875;#876;#877;#878;#879;#880;#881;#882;#883;#884;#885;#886;#887;#888;#889;#890;#891;#892;#893;#894;#895;#896;#897;#898;#899;#900;#901;#902;#903;#904;#905;#906;#907;#908;#909;#910;#911;#912;#913;#914;#915;#916;#917;#918;#919;#920;#921;#922;#923;#924;#925;#926;#927;#928;#929;#930;#931;#932;#933;#934;#935;#936;#937;#938;#939;#940;#941;#942;#943;#944;#945;#946;#947;#948;#949;#950;#951;#952;#953;#954;#955;#956;#957;#958;#959;#960;#961;#962;#963;#964;#965;#966;#967;#968;#969;#970;#971;#972;#973;#974;#975;#976;#977;#978;#979;#980;#981;#982;#983;#984;#985;#986;#987;#988;#989;#990;#991;#992;#993;#994;#995;#996;#997;#998;#999;#1000;#1001;#1002;#1003;#1004;#1005;#1006;#1007;#1008;#1009;#1010;#1011;#1012;#1013;#1014;#1015;#1016;#1017;#1018;#1019;#1020;#1021;#1022;#1023;#1024;#1025;#1026;#1027;#1028;#1029;#1030;#1031;#1032;#1033;#1034;#1035;#1036;#1037;#1038;#1039;#1040;#1041;#1042;#1043;#1044;#1045;#1046;#1047;#1048;#1049;#1050;#1051;#1052;#1053;#1054;#1055;#1056;#1057;#1058;#1059;#1060;#1061;#1062;#1063;#1064;#1065;#1066;#1067;#1068;#1069;#1070;#1071;#1072;#1073;#1074;#1075;#1076;#1077;#1078;#1079;#1080;#1081;#1082;#1083;#1084;#1085;#1086;#1087;#1088;#1089;#1090;#1091;#1092;#1093;#1094;#1095;#1096;#1097;#1098;#1099;#1100;#1101;#1102;#1103;#1104;#1105;#1106;#1107;#1108;#1109;#1110;#1111;#1112;#1113;#1114;#1115;#1116;#1117;#1118;#1119;#1120;#1121;#1122;#1123;#1124;#1125;#1126;#1127;#1128;#1129;#1130;#1131;#1132;#1133;#1134;#1135;#1136;#1137;#1138;#1139;#1140;#1141;#1142;#1143;#1144;#1145;#1146;#1147;#1148;#1149;#1150;#1151;#1152;#1153;#1154;#1155;#1156;#1157;#1158;#1159;#1160;#1161;#1162;#1163;#1164;#1165;#1166;#1167;#1168;#1169;#1170;#1171;#1172;#1173;#1174;#1175;#1176;#1177;#1178;#1179;#1180;#1181;#1182;#1183;#1184;#1185;#1186;#1187;#1188;#1189;#1190;#1191;#1192;#1193;#1194;#1195;#1196;#1197;#1198;#1199;#1200;#1201;#1202;#1203;#1204;#1205;#1206;#1207;#1208;#1209;#1210;#1211;#1212;#1213;#1214;#1215;#1216;#1217;#1218;#1219;#1220;#1221;#1222;#1223;#1224;#1225;#1226;#1227;#1228;#1229;#1230;#1231;#1232;#1233;#1234;#1235;#1236;#1237;#1238;#1239;#1240;#1241;#1242;#1243;#1244;#1245;#1246;#1247;#1248;#1249;#1250;#1251;#1252;#1253;#1254;#1255;#1256;#1257;#1258;#1259;#1260;#1261;#1262;#1263;#1264;#1265;#1266;#1267;#1268;#1269;#1270;#1271;#1272;#1273;#1274;#1275;#1276;#1277;#1278;#1279;#1280;#1281;#1282;#1283;#1284;#1285;#1286;#1287;#1288;#1289;#1290;#1291;#1292;#1293;#1294;#1295;#1296;#1297;#1298;#1299;#1300;#1301;#1302;#1303;#1304;#1305;#1306;#1307;#1308;#1309;#1310;#1311;#1312;#1313;#1314;#1315;#1316;#1317;#1318;#1319;#1320;#1321;#1322;#1323;#1324;#1325;#1326;#1327;#1328;#1329;#1330;#1331;#1332;#1333;#1334;#1335;#1336;#1337;#1338;#1339;#1340;#1341;#1342;#1343;#1344;#1345;#1346;#1347;#1348;#1349;#1350;#1351;#1352;#1353;#1354;#1355;#1356;#1357;#1358;#1359;#1360;#1361;#1362;#1363;#1364;#1365;#1366;#1367;#1368;#1369;#1370;#1371;#1372;#1373;#1374;#1375;#1376;#1377;#1378;#1379;#1380;#1381;#1382;#1383;#1384;#1385;#1386;#1387;#1388;#1389;#1390;#1391;#1392;#1393;#1394;#1395;#1396;#1397;#1398;#1399;#1400;#1401;#1402;#1403;#1404;#1405;#1406;#1407;#1408;#1409;#1410;#1411;#1412;#1413;#1414;#1415;#1416;#1417;#1418;#1419;#1420;#1421;#1422;#1423;#1424;#1425;#1426;#1427;#1428;#1429;#1430;#1431;#1432;#1433;#1434;#1435;#1436;#1437;#1438;#1439;#1440;#1441;#1442;#1443;#1444;#1445;#1446;#1447;#1448;#1449;#1450;#1451;#1452;#1453;#1454;#1455;#1456;#1457;#1458;#1459;#1460;#1461;#1462;#1463;#1464;#1465;#1466;#1467;#1468;#1469;#1470;#1471;#1472;#1473;#1474;#1475;#1476;#1477;#1478;#1479;#1480;#1481;#1482;#1483;#1484;#1485;#1486;#1487;#1488;#1489;#1490;#1491;#1492;#1493;#1494;#1495;#1496;#1497;#1498;#1499;#1500;#1501;#1502;#1503;#1504;#1505;#1506;#1507;#1508;#1509;#1510;#1511;#1512;#1513;#1514;#1515;#1516;#1517;#1518;#1519;#1520;#1521;#1522;#1523;#1524;#1525;#1526;#1527;#1528;#1529;#1530;#1531;#1532;#1533;#1534;#1535;#1536;#1537;#1538;#1539;#1540;#1541;#1542;#1543;#1544;#1545;#1546;#1547;#1548;#1549;#1550;#1551;#1552;#1553;#1554;#1555;#1556;#1557;#1558;#1559;#1560;#1561;#1562;#1563;#1564;#1565;#1566;#1567;#1568;#1569;#1570;#1571;#1572;#1573;#1574;#1575;#1576;#1577;#1578;#1579;#1580;#1581;#1582;#1583;#1584;#1585;#1586;#1587;#1588;#1589;#1590;#1591;#1592;#1593;#1594;#1595;#1596;#1597;#1598;#1599;#1600;#1601;#1602;#1603;#1604;#1605;#1606;#1607;#1608;#1609;#1610;#1611;#1612;#1613;#1614;#1615;#1616;#1617;#1618;#1619;#1620;#1621;#1622;#1623;#1624;#1625;#1626;#1627;#1628;#1629;#1630;#1631;#1632;#1633;#1634;#1635;#1636;#1637;#1638;#1639;#1640;#1641;#1642;#1643;#1644;#1645;#1646;#1647;#1648;#1649;#1650;#1651;#1652;#1653;#1654;#1655;#1656;#1657;#1658;#1659;#1660;#1661;#1662;#1663;#1664;#1665;#1666;#1667;#1668;#1669;#1670;#1671;#1672;#1673;#1674;#1675;#1676;#1677;#1678;#1679;#1680;#1681;#1682;#1683;#1684;#1685;#1686;#1687;#1688;#1689;#1690;#1691;#1692;#1693;#1694;#1695;#1696;#1697;#1698;#1699;#1700;#1701;#1702;#1703;#1704;#1705;#1706;#1707;#1708;#1709;#1710;#1711;#1712;#1713;#1714;#1715;#1716;#1717;#1718;#1719;#1720;#1721;#1722;#1723;#1724;#1725;#1726;#1727;#1728;#1729;#1730;#1731;#1732;#1733;#1734;#1735;#1736;#1737;#1738;#1739;#1740;#1741;#1742;#1743;#1744;#1745;#1746;#1747;#1748;#1749;#1750;#1751;#1752;#1753;#1754;#1755;#1756;#1757;#1758;#1759;#1760;#1761;#1762;#1763;#1764;#1765;#1766;#1767;#1768;#1769;#1770;#1771;#1772;#1773;#1774;#1775;#1776;#1777;#1778;#1779;#1780;#1781;#1782;#1783;#1784;#1785;#1786;#1787;#1788;#1789;#1790;#1791;#1792;#1793;#1794;#1795;#1796;#1797;#1798;#1799;#1800;#1801;#1802;#1803;#1804;#1805;#1806;#1807;#1808;#1809;#1810;#1811;#1812;#1813;#1814;#1815;#1816;#1817;#1818;#1819;#1820;#1821;#1822;#1823;#1824;#1825;#1826;#1827;#1828;#1829;#1830;#1831;#1832;#1833;#1834;#1835;#1836;#1837;#1838;#1839;#1840;#1841;#1842;#1843;#1844;#1845;#1846;#1847;#1848;#1849;#1850;#1851;#1852;#1853;#1854;#1855;#1856;#1857;#1858;#1859;#1860;#1861;#1862;#1863;#1864;#1865;#1866;#1867;#1868;#1869;#1870;#1871;#1872;#1873;#1874;#1875;#1876;#1877;#1878;#1879;#1880;#1881;#1882;#1883;#1884;#1885;#1886;#1887;#1888;#1889;#1890;#1891;#1892;#1893;#1894;#1895;#1896;#1897;#1898;#1899;#1900;#1901;#1902;#1903;#1904;#1905;#1906;#1907;#1908;#1909;#1910;#1911;#1912;#1913;#1914;#1915;#1916;#1917;#1918;#1919;#1920;#1921;#1922;#1923;#1924;#1925;#1926;#1927;#1928;#1929;#1930;#1931;#1932;#1933;#1934;#1935;#1936;#1937;#1938;#1939;#1940;#1941;#1942;#1943;#1944;#1945;#1946;#1947;#1948;#1949;#1950;#1951;#1952;#1953;#1954;#1955;#1956;#1957;#1958;#1959;#1960;#1961;#1962;#1963;#1964;#1965;#1966;#1967;#1968;#1969;#1970;#1971;#1972;#1973;#1974;#1975;#1976;#1977;#1978;#1979;#1980;#1981;#1982;#1983;#1984;#1985;#1986;#1987;#1988;#1989;#1990;#1991;#1992;#1993;#1994;#1995;#1996;#1997;#1998;#1999;#2000;#2001;#2002;#2003;#2004;#2005;#2006;#2007;#2008;#2009;#2010;#2011;#2012;#2013;#2014;#2015;#2016;#2017;#2018;#2019;#2020;#2021;#2022;#2023;#2024;#2025;#2026;#2027;#2028;#2029;#2030;#2031;#2032;#2033;#2034;#2035;#2036;#2037;#2038;#2039;#2040;#2041;#2042;#2043;#2044;#2045;#2046;#2047;#2048;#2049;#2050;#2051;#2052;#2053;#2054;#2055;#2056;#2057;#2058;#2059;#2060;#2061;#2062;#2063;#2064;#2065;#2066;#2067;#2068;#2069;#2070;#2071;#2072;#2073;#2074;#2075;#2076;#2077;#2078;#2079;#2080;#2081;#2082;#2083;#2084;#2085;#2086;#2087;#2088;#2089;#2090;#2091;#2092;#2093;#2094;#2095;#2096;#2097;#2098;#2099;#2100;#2101;#2102;#2103;#2104;#2105;#2106;#2107;#2108;#2109;#2110;#2111;#2112;#2113;#2114;#2115;#2116;#2117;#2118;#2119;#2120;#2121;#2122;#2123;#2124;#2125;#2126;#2127;#2128;#2129;#2130;#2131;#2132;#2133;#2134;#2135;#2136;#2137;#2138;#2139;#2140;#2141;#2142;#2143;#2144;#2145;#2146;#2147;#2148;#2149;#2150;#2151;#2152;#2153;#2154;#2155;#2156;#2157;#2158;#2159;#2160;#2161;#2162;#2163;#2164;#2165;#2166;#2167;#2168;#2169;#2170;#2171;#2172;#2173;#2174;#2175;#2176;#2177;#2178;#2179;#2180;#2181;#2182;#2183;#2184;#2185;#2186;#2187;#2188;#2189;#2190;#2191;#2192;#2193;#2194;#2195;#2196;#2197;#2198;#2199;#2200;#2201;#2202;#2203;#2204;#2205;#2206;#2207;#2208;#2209;#2210;#2211;#2212;#2213;#2214;#2215;#2216;#2217;#2218;#2219;#2220;#2221;#2222;#2223;#2224;#2225;#2226;#2227;#2228;#2229;#2230;#2231;#2232;#2233;#2234;#2235;#2236;#2237;#2238;#2239;#2240;#2241;#2242;#2243;#2244;#2245;#2246;#2247;#2248;#2249;#2250;#2251;#2252;#2253;#2254;#2255;#2256;#2257;#2258;#2259;#2260;#2261;#2262;#2263;#2264;#2265;#2266;#2267;#2268;#2269;#2270;#2271;#2272;#2273;#2274;#2275;#2276;#2277;#2278;#2279;#2280;#2281;#2282;#2283;#2284;#2285;#2286;#2287;#2288;#2289;#2290;#2291;#2292;#2293;#2294;#2295;#2296;#2297;#2298;#2299;#2300;#2301;#2302;#2

Fragile Bombers

Technology: PostScript Single Master
PostScript Name: FragileBombers
Version: 001.000
Font Suitcase File: Fragile Bombers.bmap
Font Outline File: FragiBom
(C) 1999 Ray Larabie rlarabie@hotmail.com

abcdefghijklmnopqrstuvwxyz
ABCDEFGHIJKLMNOPQRSTUVWXYZ
1234567890 \$%&('.,:;#!?)

While the basic shapes of letters have not changed much in hundreds of years, there have been thousands of variations on the theme. There are special types for telephone books, newspapers and magazines, and for the exclusive use of corporations. Some typefaces have a leisurely look about them while conforming to everyday typographic expectations. Others were born with unusual, yet casual, shapes and make the best of it.

8 Sphinx of black quartz judge my vow.
10 Sphinx of black quartz judge my vow.
12 Sphinx of black quartz judge my vow.
14 Sphinx of black quartz judge my vow.
18 Sphinx of black quartz judge my vow.
24 Sphinx of black quartz judge my vow.
30 Sphinx of black quartz judge my vow.
36 Sphinx of black quartz judge my vow.
48 Sphinx of black quartz judge my
60 Sphinx of black quartz jud
72 Sphinx of black quartz

Frak

Technology: PostScript Single Master

PostScript Name: Frak

Version: 001.000

Font Suitcase File: Frak.bmap

Font Outline File: Frak

Frak! - 1996 Ray Larabie freeware

**a b c d e f g h i j k l m n o p q r s t u v w x
A B C D E F G H I J K L M N O P Q R S T U V W
1 2 3 4 5 6 7 8 9 0 \$ % & (, . : ; # ! ? ,**

While the basic shapes of letters have not changed much in hundreds of years, there have been thousands of variations on the theme. There are special types for telephone books, newspapers and magazines, and for the exclusive use of corporations. Some typefaces have a leisurely look

8 *Sphinx of black quartz Judge my vow,*
10 *Sphinx of black quartz Judge my vow,*
12 *Sphinx of black quartz Judge my vow,*
14 *Sphinx of black quartz Judge my vow,*
18 *Sphinx of black quartz Judge my vow,*
24 *Sphinx of black quartz Judge my vo*
30 *Sphinx of black quartz Judge*
36 *Sphinx of black quartz*
48 *Sphinx of black qu*
60 *Sphinx of bloc*
72 *Sphinx of bl*

Frozen Dog Treats

Technology: PostScript Single Master

PostScript Name: FrozenDogTreats

Version: 001.000

Font Suitcase File: Frozen Dog Treats.bmap

Font Outline File: FrozeDogTre

\\(c) 1998 Ray Larabie - freeware rlarabie@hotmail.com

**a b c d e f g h i j k l m n o p
q r s t u v w x y z
1 2 3 4 5 6 7 8 9 0 \$ % & ' ()**

**While the basic shapes of letters
have not changed much in hundreds
of years, there have been
thousands of variations on the
theme. There are special types for
telephone books, newspapers and**

8 **SPHINX OF BLACK QUARTZ JUDGE MY VOW.**

10 **SPHINX OF BLACK QUARTZ JUDGE MY VOW.**

12 **SPHINX OF BLACK QUARTZ JUDGE MY VOW.**

14 **SPHINX OF BLACK QUARTZ JUDGE MY VOW.**

18 **SPHINX OF BLACK QUARTZ JUDGE MY**

24 **SPHINX OF BLACK QUARTZ J**

30 **SPHINX OF BLACK QUARTZ**

36 **SPHINX OF BLACK**

48 **SPHINX OF BL**

60 **SPHINX OF**

72 **SPHINX O**

Ghostmeat

Technology: PostScript Single Master
PostScript Name: Ghostmeat
Version: 001.000
Font Suitcase File: Ghostmeat.bmap
Font Outline File: Ghost
\(c) 1999 Ray Larabie rlarabie@hotmail.com

A B C D E F G H I J K L M N O P Q R S
A B C D E F G H I J K L M N O P Q R S
1 2 3 4 5 6 7 8 9 0 \$ % & (. , : ; * ! ?)

WHILE THE BASIC SHAPES OF LETTERS HAVE NOT CHANGED MUCH IN HUNDREDS OF YEARS, THERE HAVE BEEN THOUSANDS OF VARIATIONS ON THE THEME. THERE ARE SPECIAL TYPES FOR TELEPHONE BOOKS, NEWSPAPERS AND MAGAZINES, AND FOR THE EXCLUSIVE USE OF

8 SPHINX OF BLACK QUARTZ JUDGE MY VOW.
10 SPHINX OF BLACK QUARTZ JUDGE MY VOW.
12 SPHINX OF BLACK QUARTZ JUDGE MY VOW.
14 SPHINX OF BLACK QUARTZ JUDGE MY VOW.
18 SPHINX OF BLACK QUARTZ JUDGE MY VOW.
24 SPHINX OF BLACK QUARTZ JUDGE M
30 SPHINX OF BLACK QUARTZ J
36 SPHINX OF BLACK QUAR
48 SPHINX OF BLACK
60 SPHINX OF BL
72 SPHINX OF

GiantTigers

Technology: PostScript Single Master
PostScript Name: GiantTigers
Version: 001.000
Font Suitcase File: Giant Tigers.bmap
Font Outline File: GiantTig
by Ray Larabie 1997 - freeware

ABCDEFGHIJKLMNOPQRSTUVWXYZ

ABCDEFGHIJKLMNOPQRSTUVWXYZ

1234567890 \$%&(.,:#!?)

WHILE THE BASIC SHAPES OF LETTERS HAVE NOT CHANGED MUCH IN HUNDREDS OF YEARS, THERE HAVE BEEN THOUSANDS OF VARIATIONS ON THE THEME. THERE ARE SPECIAL TYPES FOR TELEPHONE BOOKS, NEWSPAPERS AND MAGAZINES, AND FOR THE EXCLUSIVE USE OF CORPORATIONS. SOME TYPEFACES HAVE A LEISURELY LOOK ABOUT THEM WHILE CONFORMING TO EVERYDAY TYPOGRAPHIC EXPECTATIONS. OTHERS WERE BORN WITH UNUSUAL, YET CASUAL, SHAPES AND MAKE THE BEST OF IT.

8 SPHINX OF BLACK QUARTZ JUDGE MY VOW.

10 SPHINX OF BLACK QUARTZ JUDGE MY VOW.

12 SPHINX OF BLACK QUARTZ JUDGE MY VOW.

14 SPHINX OF BLACK QUARTZ JUDGE MY VOW.

18 SPHINX OF BLACK QUARTZ JUDGE MY VOW.

24 SPHINX OF BLACK QUARTZ JUDGE MY VOW.

30 SPHINX OF BLACK QUARTZ JUDGE MY VOW.

36 SPHINX OF BLACK QUARTZ JUDGE MY VOW.

48 SPHINX OF BLACK QUARTZ JUDGE MY

60 SPHINX OF BLACK QUARTZ JU

72 SPHINX OF BLACK QUART

Glaz Krak solid

Technology: PostScript Single Master
PostScript Name: GlazKrakSolid
Version: 001.000
Font Suitcase File: Glaz Krak.bmap
Font Outline File: GlazKra
GlazKrak - by Ray Larabie 1996 - freeware - distribute freely

A B C D E F G H I J K L M N O P Q R S T
A B C D E F G H I J K L M N O P Q R S T
1 2 3 4 5 6 7 8 9 0 \$ % ' , : ;

WHILE THE BASIC SHAPES OF LETTERS
HAVE NOT CHANGED MUCH IN HUNDREDS
OF YEARS, THERE HAVE BEEN THOUSANDS
OF VARIATIONS ON THE THEME. THERE ARE
SPECIAL TYPES FOR TELEPHONE BOOKS,
NEWSPAPERS AND MAGAZINES, AND FOR

8 SPHINX OF BLACK QUARTZ JUDGE MY VOW.
10 SPHINX OF BLACK QUARTZ JUDGE MY VOW.
12 SPHINX OF BLACK QUARTZ JUDGE MY VOW.
14 SPHINX OF BLACK QUARTZ JUDGE MY VOW.
18 SPHINX OF BLACK QUARTZ JUDGE MY VO
24 SPHINX OF BLACK QUARTZ JUD
30 SPHINX OF BLACK QUART
36 SPHINX OF BLACK Q
48 SPHINX OF BLA
60 SPHINX OF

Golden Girdle

Technology: PostScript Single Master
PostScript Name: GoldenGirdle
Version: 001.000
Font Suitcase File: Golden Girdle.bmap
Font Outline File: GoldeGir
Freeware www.globalserve.net/~rlrabie

A B C D E F G H I J K
A B C D E F G H I J K
L M N O P Q R S T U V W X Y Z

WHILE THE BASIC SHAPES OF
LETTERS HAVE NOT CHANGED
MUCH IN HUNDREDS OF
YEARS, THERE HAVE BEEN
THOUSANDS OF VARIATIONS
ON THE THEME. THERE ARE

8 SPHINX OF BLACK QUARTZ JUDGE MY VOW.
10 SPHINX OF BLACK QUARTZ JUDGE MY VOW.
12 SPHINX OF BLACK QUARTZ JUDGE MY VOW
14 SPHINX OF BLACK QUARTZ JUDGE M
18 SPHINX OF BLACK QUARTZ J
24 SPHINX OF BLACK QU
30 SPHINX OF BLAC
36 SPHINX OF BL
48 SPHINX OF
60 SPHINX
72 SPHINX

Good Times

Technology: PostScript Single Master

PostScript Name: GoodTimes

Version: 001.000

Font Suitcase File: Good Times.bmap

Font Outline File: GoodTim

Ray Larabie - freeware rlarabie@hotmail.com

A B C D E F G H I J K L M N O P
A B C D E F G H I J K L M N O P
1 2 3 4 5 6 7 8 9 0 \$ % & (. , ; : #

WHILE THE BASIC SHAPES OF LETTERS HAVE
NOT CHANGED MUCH IN HUNDREDS OF
YEARS, THERE HAVE BEEN THOUSANDS OF
VARIATIONS ON THE THEME. THERE ARE
SPECIAL TYPES FOR TELEPHONE BOOKS,
NEWSPAPERS AND MAGAZINES, AND FOR

8 SPHINX OF BLACK QUARTZ JUDGE MY VOW.

10 SPHINX OF BLACK QUARTZ JUDGE MY VOW.

12 SPHINX OF BLACK QUARTZ JUDGE MY VOW.

14 SPHINX OF BLACK QUARTZ JUDGE MY VOW.

18 SPHINX OF BLACK QUARTZ JUDGE MY VO

24 SPHINX OF BLACK QUARTZ JUD

30 SPHINX OF BLACK QUART

36 SPHINX OF BLACK QU

48 SPHINX OF BLA

60 SPHINX OF B

72 SPHINX OF

Goodfish

Technology: PostScript Single Master
PostScript Name: Goodfish
Version: 001.000
Font Suitcase File: Goodfish.bmap
Font Outline File: Goodf
Copyright \(\c\) Ray Larabie, 2000. All rights reserved.

abcdefghijklmnopqrstuvwxyz
ABCDEFGHIJKLMNOPQRSTUVWXYZ
1234567890 \$%&(.,:;#!?)

While the basic shapes of letters have not changed much in hundreds of years, there have been thousands of variations on the theme. There are special types for telephone books, newspapers and magazines, and for the exclusive use of corporations. Some typefaces have a leisurely look about them while conforming to everyday typographic expectations. Others were born with unusual, yet casual, shapes and make the best of it.

8 Sphinx of black quartz judge my vow.

10 Sphinx of black quartz judge my vow.

12 Sphinx of black quartz judge my vow.

14 Sphinx of black quartz judge my vow.

18 Sphinx of black quartz judge my vow.

24 Sphinx of black quartz judge my vow.

30 Sphinx of black quartz judge my vow.

36 Sphinx of black quartz judge my vow.

48 Sphinx of black quartz judge m

60 Sphinx of black quartz ju

Goodfish-Italic

Technology: PostScript Single Master
PostScript Name: Goodfish-Italic
Version: 001.000
Font Suitcase File: Goodfish-Italic.bmap
Font Outline File: Goodflta
Copyright \(\c\) Ray Larabie, 2000. All rights reserved.

abcdefghijklmnopqrstuvwxyz
ABCDEFGHIJKLMNOPQRSTUVWXYZ
1234567890 \$%&(.,:;#!?)

While the basic shapes of letters have not changed much in hundreds of years, there have been thousands of variations on the theme. There are special types for telephone books, newspapers and magazines, and for the exclusive use of corporations. Some typefaces have a leisurely look about them while conforming to everyday typographic expectations. Others were born with unusual, yet casual, shapes and make the best of it.

8 *Sphinx of black quartz judge my vow.*

10 *Sphinx of black quartz judge my vow.*

12 *Sphinx of black quartz judge my vow.*

14 *Sphinx of black quartz judge my vow.*

18 *Sphinx of black quartz judge my vow.*

24 *Sphinx of black quartz judge my vow.*

30 *Sphinx of black quartz judge my vow.*

36 *Sphinx of black quartz judge my vow.*

48 *Sphinx of black quartz judge my v*

60 *Sphinx of black quartz judg*

Goodfish-Bold

Technology: PostScript Single Master
PostScript Name: Goodfish-Bold
Version: 001.000
Font Suitcase File: Goodfish-Bold.bmap
Font Outline File: GoodfBol
Copyright \(\c\) Ray Larabie, 2000. All rights reserved.

abcdefghijklmnopqrstuvwxyz
ABCDEFGHIJKLMNOPQRSTUVWXYZ
1234567890 \$%&(.,:;#!?)

While the basic shapes of letters have not changed much in hundreds of years, there have been thousands of variations on the theme. There are special types for telephone books, newspapers and magazines, and for the exclusive use of corporations. Some typefaces have a leisurely look about them while conforming to everyday typographic expectations. Others were born with unusual, yet casual, shapes and make the best of it.

8 Sphinx of black quartz judge my vow.

10 Sphinx of black quartz judge my vow.

12 Sphinx of black quartz judge my vow.

14 Sphinx of black quartz judge my vow.

18 Sphinx of black quartz judge my vow.

24 Sphinx of black quartz judge my vow.

30 Sphinx of black quartz judge my vow.

36 Sphinx of black quartz judge my vow.

48 Sphinx of black quartz judge

60 Sphinx of black quartz j

Goodfish-Bold Italic

Technology: PostScript Single Master
PostScript Name: Goodfish-BoldItalic
Version: 001.000
Font Suitcase File: Goodfish-Bold Italic.bmap
Font Outline File: GoodfBolIta
Copyright \(\c\) Ray Larabie, 2000. All rights reserved.

abcdefghijklmnopqrstuvwxyz
ABCDEFGHIJKLMNOPQRSTUVWXYZ
1234567890 \$%&(.,:;#!?)

While the basic shapes of letters have not changed much in hundreds of years, there have been thousands of variations on the theme. There are special types for telephone books, newspapers and magazines, and for the exclusive use of corporations. Some typefaces have a leisurely look about them while conforming to everyday typographic expectations. Others were born with unusual, yet casual, shapes and make the best of it.

8 *Sphinx of black quartz judge my vow.*

10 *Sphinx of black quartz judge my vow.*

12 *Sphinx of black quartz judge my vow.*

14 *Sphinx of black quartz judge my vow.*

18 *Sphinx of black quartz judge my vow.*

24 *Sphinx of black quartz judge my vow.*

30 *Sphinx of black quartz judge my vow.*

36 *Sphinx of black quartz judge my vow.*

48 *Sphinx of black quartz judge my*

60 *Sphinx of black quartz jud*

Got No Heart

Technology: PostScript Single Master

PostScript Name: GotNoHeart

Version: 001.000

Font Suitcase File: Got No Heart.bmap

Font Outline File: GotNoHea

\\(C\\)1999 Ray Larabie - rlarabie@hotmail.com

A B C D E F G H I J K L M N O P Q R
A B C D E F G H I J K L M N O P Q R
1 2 3 4 5 6 7 8 9 0

o v i o

WHILE THE BASIC SHAPES OF LETTERS HAVE
NOT CHANGED MUCH IN HUNDREDS OF YEARS,
THERE HAVE BEEN THOUSANDS OF
VARIATIONS ON THE THEME. THERE ARE
SPECIAL TYPES FOR TELEPHONE BOOKS,
NEWSPAPERS AND MAGAZINES, AND FOR THE

8 SPWINT OF BLACK QUARTZ IUDGE MY VOW.

10 SPWINT OF BLACK QUARTZ IUDGE MY VOW.

12 SPWINT OF BLACK QUARTZ IUDGE MY VOW.

14 SPWINT OF BLACK QUARTZ IUDGE MY VOW.

18 SPWINT OF BLACK QUARTZ IUDGE MY VOW.

24 SPWINT OF BLACK QUARTZ IUDGE

30 SPWINT OF BLACK QUARTZ

36 SPWINT OF BLACK QU

48 SPWINT OF BLAC

60 SPWINT OF B

72 SPWINT OF

Graffiti Treat

Technology: PostScript Single Master
PostScript Name: GraffitiTreat
Version: 001.000
Font Suitcase File: Graffiti Treat.bmap
Font Outline File: GraffTre
by Ray Larabie 1997 - freeware - www.swankarmy.net/larabiefonts

A B C D E F G H I J K L M N O P Q R S
A B C D E F G H I J K L M N O P Q R S
1 2 3 4 5 6 7 8 9 0 # % & (. , : ; ' ! @)

WHILE THE BASIC SHAPES OF LETTERS HAVE NOT CHANGED MUCH IN HUNDREDS OF YEARS, THERE HAVE BEEN THOUSANDS OF VARIATIONS ON THE THEME. THERE ARE SPECIAL TYPES FOR TELEPHONE BOOKS, NEWSPAPERS AND MAGAZINES, AND FOR THE EXCLUSIVE USE OF CORPORATIONS. SOME

8 SPHINX OF BLACK QUARTZ JUDGE ME VOY.
10 SPHINX OF BLACK QUARTZ JUDGE ME VOY.
12 SPHINX OF BLACK QUARTZ JUDGE ME VOY.
14 SPHINX OF BLACK QUARTZ JUDGE ME VOY.
18 SPHINX OF BLACK QUARTZ JUDGE ME VOY.
24 SPHINX OF BLACK QUARTZ JUDGE M
30 SPHINX OF BLACK QUARTZ J
36 SPHINX OF BLACK QUAR
48 SPHINX OF BLACK

Green Fuz

Technology: PostScript Single Master

PostScript Name: GreenFuz

Version: 001.000

Font Suitcase File: Green Fuz.bmap

Font Outline File: GreenFuz

\\(C) 1999 Ray Larabie - rlarabie@hotmail.com

ABCDEFGHIJKLMNOPQRSTUVWXYZ

ABCDEFGHIJKLMNOPQRSTUVWXYZ

1234567890 \$%&{.,: !?}

WHILE THE BASIC SHAPES OF LETTERS HAVE NOT CHANGED MUCH IN HUNDREDS OF YEARS, THERE HAVE BEEN THOUSANDS OF VARIATIONS ON THE THEME. THERE ARE SPECIAL TYPES FOR TELEPHONE BOOKS, NEWSPAPERS AND MAGAZINES, AND FOR THE EXCLUSIVE USE OF CORPORATIONS. SOME TYPEFACES HAVE A LEISURELY LOOK ABOUT THEM WHILE CONFORMING TO EVERYDAY TYPOGRAPHIC EXPECTATIONS. OTHERS WERE BORN WITH UNUSUAL, YET CASUAL, SHAPES AND MAKE THE BEST OF IT.

8 SPHINX OF BLACK QUARTZ JUDGE MY VOW.

10 SPHINX OF BLACK QUARTZ JUDGE MY VOW.

12 SPHINX OF BLACK QUARTZ JUDGE MY VOW.

14 SPHINX OF BLACK QUARTZ JUDGE MY VOW.

16 SPHINX OF BLACK QUARTZ JUDGE MY VOW.

18 SPHINX OF BLACK QUARTZ JUDGE MY VOW.

24 SPHINX OF BLACK QUARTZ JUDGE MY VOW.

30 SPHINX OF BLACK QUARTZ JUDGE MY VOW.

36 SPHINX OF BLACK QUARTZ JUDGE MY VOW.

42 SPHINX OF BLACK QUARTZ JUDGE MY VOW.

48 SPHINX OF BLACK QUARTZ JUDGE MY VOW.

54 SPHINX OF BLACK QUARTZ JUDGE MY VOW.

60 SPHINX OF BLACK QUARTZ JUDGE MY VOW.

66 SPHINX OF BLACK QUARTZ JUDGE MY VOW.

72 SPHINX OF BLACK QUARTZ JUDGE MY VOW.

GroovyGhosties

Technology: PostScript Single Master
PostScript Name: GroovyGhosties
Version: 001.000
Font Suitcase File: Groovy Ghosties.bmap
Font Outline File: GroovGho
1997 by Ray Larabee-freeware distribute freely

abcdefghijklmnopqrstuvwxyz
abcdefghijklmnopqrstuvwxyz
1234567890 .,: !?)

WHILE THE BASIC SHAPES OF LETTERS HAVE NOT CHANGED
MUCH IN HUNDREDS OF YEARS, THERE HAVE BEEN THOUSANDS
OF VARIATIONS ON THE THEME. THERE ARE SPECIAL TYPES FOR
TELEPHONE BOOKS, NEWSPAPERS AND MAGAZINES, AND FOR
THE EXCLUSIVE USE OF CORPORATIONS. SOME TYPEFACES HAVE
A LEISURELY LOOK ABOUT THEM WHILE CONFORMING TO

8 SPHINX OF BLACK QUARTZ JUDGE MY VOW.

10 SPHINX OF BLACK QUARTZ JUDGE MY VOW.

12 SPHINX OF BLACK QUARTZ JUDGE MY VOW.

14 SPHINX OF BLACK QUARTZ JUDGE MY VOW.

18 SPHINX OF BLACK QUARTZ JUDGE MY VOW.

24 SPHINX OF BLACK QUARTZ JUDGE MY VOW.

30 SPHINX OF BLACK QUARTZ JUDGE MY

36 SPHINX OF BLACK QUARTZ JUDGE

48 SPHINX OF BLACK QUARTZ

60 SPHINX OF BLACK QUARTZ

72 SPHINX OF BLACK QUARTZ

Gumtuckey

Technology: PostScript Single Master

PostScript Name: Gumtuckey

Version: 001.000

Font Suitcase File: Gumtuckey.bmap

Font Outline File: Gumtu

\\(C) 1999 Ray Larabie - rlarabie@hotmail.com

abcdefghijklmnopqrstuvwxyz

ABCDEFGHIJKLMNOPQRSTUVWXYZ

1234567890 \$%&@.,:;!?'

While the basic shapes of letters have not changed much in hundreds of years, there have been thousands of variations on the theme. There are special types for telephone books, newspapers and magazines, and for the exclusive use of corporations. Some typefaces have a leisurely look about them while conforming to everyday typographic expectations. Others were born with unusual, yet casual, shapes and make the best of it.

8 Sphinx of black quartz judge my vow.

10 Sphinx of black quartz judge my vow.

12 Sphinx of black quartz judge my vow.

14 Sphinx of black quartz judge my vow.

18 Sphinx of black quartz judge my vow.

24 Sphinx of black quartz judge my vow.

30 Sphinx of black quartz judge my vow.

36 Sphinx of black quartz judge my vow.

48 Sphinx of black quartz judge my

60 Sphinx of black quartz jud

72 Sphinx of black quartz

Gunplay

Technology: PostScript Single Master
PostScript Name: Gunplay
Version: 001.000
Font Suitcase File: Gunplay.bmap
Font Outline File: Gunpl
Copyright \(\c\) Ray Larabie, 2000. All rights reserved.

abcdefghijklmnopqrstuvwxyz
ABCDEFGHIJKLMNOPQRSTUVWXYZ
1234567890 \$%&(.,:#!?)

While the basic shapes of letters have not changed much in hundreds of years, there have been thousands of variations on the theme. There are special types for telephone books, newspapers and magazines, and for the exclusive use of corporations. Some typefaces have a leisurely look about them while conforming to everyday typographic expectations. Others were born with

8 **Sphinx of black quartz judge my vow.**

10 **Sphinx of black quartz judge my vow.**

12 **Sphinx of black quartz judge my vow.**

14 **Sphinx of black quartz judge my vow.**

18 **Sphinx of black quartz judge my vow.**

24 **Sphinx of black quartz judge my vow.**

30 **Sphinx of black quartz judge my vow.**

36 **Sphinx of black quartz judge my**

48 **Sphinx of black quartz j**

60 **Sphinx of black qu**

Gunplay 3D

Technology: PostScript Single Master
PostScript Name: Gunplay3D
Version: 001.000
Font Suitcase File: Gunplay-3D.bmap
Font Outline File: GunplD
Copyright \(\c\) Ray Larabee, 2000. All rights reserved.

abcdefghijklmnopqrstuvwxyz
ABCDEFGHIJKLMNOPQRSTUVWXYZ
1234567890 \$%&(. , ; : # ! ?)

While the basic shapes of letters have not changed much in hundreds of years, there have been thousands of variations on the theme. There are special types for telephone books, newspapers and magazines, and for the exclusive use of corporations. Some typefaces have a leisurely look about them while conforming to everyday typographic expectations. Others were born with unusual,

8 **Sphinx of black quartz judge my vow.**

10 **Sphinx of black quartz judge my vow.**

12 **Sphinx of black quartz judge my vow.**

14 **Sphinx of black quartz judge my vow.**

18 **Sphinx of black quartz judge my vow.**

24 **Sphinx of black quartz judge my vow.**

30 **Sphinx of black quartz judge my vow.**

36 **Sphinx of black quartz judge my**

48 **Sphinx of black quartz j**

60 **Sphinx of black qua**

72 **Sphinx of black**

Gyparody

Technology: PostScript Single Master
PostScript Name: Gyparody
Version: 001.000
Font Suitcase File: Gyparody.bmap
Font Outline File: Gypar
Copyright \(\c\) Ray Larabee, 2000. All rights reserved.

A B C D E F G H I J K L M N O P Q R S T U V W X Y Z

A B C D E F G H I J K L M N O P Q R S T U V W X Y Z

1 2 3 4 5 6 7 8 9 0 \$ % & [. , ; : # ! ?]

WHILE THE BASIC SHAPES OF LETTERS HAVE NOT CHANGED MUCH IN HUNDREDS OF YEARS, THERE HAVE BEEN THOUSANDS OF VARIATIONS ON THE THEME. THERE ARE SPECIAL TYPES FOR TELEPHONE BOOKS, NEWSPAPERS AND MAGAZINES, AND FOR THE EXCLUSIVE USE OF CORPORATIONS. SOME TYPEFACES HAVE A LEISURELY LOOK ABOUT THEM WHILE CONFORMING TO EVERYDAY TYPOGRAPHIC EXPECTATIONS. OTHERS WERE BORN WITH UNUSUAL, YET CASUAL, SHAPES AND

8 SPHINX OF BLACK QUARTZ JUDGE MY VOW.

10 SPHINX OF BLACK QUARTZ JUDGE MY VOW.

12 SPHINX OF BLACK QUARTZ JUDGE MY VOW.

14 SPHINX OF BLACK QUARTZ JUDGE MY VOW.

18 SPHINX OF BLACK QUARTZ JUDGE MY VOW.

24 SPHINX OF BLACK QUARTZ JUDGE MY VOW.

30 SPHINX OF BLACK QUARTZ JUDGE MY VOW.

36 SPHINX OF BLACK QUARTZ JUDGE MY V

48 SPHINX OF BLACK QUARTZ JU

60 SPHINX OF BLACK QUAR

72 SPHINX OF BLACK Q

Gyrussian

Technology: PostScript Single Master

PostScript Name: Gyrussian

Version: 001.000

Font Suitcase File: Gyrussian.bmap

Font Outline File: Gyrus

by Ray Larabie 1998 - freeware

***ABCDEFGHIJKLMNOPQRSTUVWXYZ
ABCDEFGHIJKLMNOPQRSTUVWXYZ
1234567890 & (, , , : ; ! ?)***

***WHILE THE BASIC SHAPES OF LETTERS HAVE NOT
CHANGED MUCH IN HUNDREDS OF YEARS, THERE HAVE
BEEN THOUSANDS OF VARIATIONS ON THE THEME. THERE
ARE SPECIAL TYPES FOR TELEPHONE BOOKS, NEWSPAPERS
AND MAGAZINES, AND FOR THE EXCLUSIVE USE OF
CORPORATIONS. SOME TYPEFACES HAVE A LEISURELY LOOK***

8 ***SPHINX OF BLACK QUARTZ JUDGE MY VOW.***

10 ***SPHINX OF BLACK QUARTZ JUDGE MY VOW.***

12 ***SPHINX OF BLACK QUARTZ JUDGE MY VOW.***

14 ***SPHINX OF BLACK QUARTZ JUDGE MY VOW.***

18 ***SPHINX OF BLACK QUARTZ JUDGE MY VOW.***

24 ***SPHINX OF BLACK QUARTZ JUDGE MY VOW.***

30 ***SPHINX OF BLACK QUARTZ JUDGE***

36 ***SPHINX OF BLACK QUARTZ J***

48 ***SPHINX OF BLACK QU***

60 ***SPHINX OF BLAC***

72 ***SPHINX OF BL***

Hamma Mamma Jamma

Technology: PostScript Single Master
PostScript Name: HammaMammaJamma
Version: 001.000
Font Suitcase File: Hamma Mamma Jamma.bmap
Font Outline File: HammaMamJam
Ray Larabie 1998 freeware-- swankarmy.net/larabiefonts

abcdefghijklmnopqrstuvwxyz

ABCDEFGHIJKLMNOPQRSTUVWXYZ

1234567890 % [. , : ; ! ?]

While the basic shapes of letters have not changed much in hundreds of years, there have been thousands of variations on the theme. There are special types for telephone books, newspapers and magazines, and for the exclusive use of corporations. Some typefaces have a leisurely look about them while conforming to everyday typographic expectations. Others were born with unusual, yet casual, shapes and make the best of it.

8 Sphinx of black quartz judge my vow.
10 Sphinx of black quartz judge my vow.
12 Sphinx of black quartz judge my vow.
14 Sphinx of black quartz judge my vow.
18 Sphinx of black quartz judge my vow.
24 Sphinx of black quartz judge my vow.
30 Sphinx of black quartz judge my vow.
36 Sphinx of black quartz judge my vow.
48 Sphinx of black quartz judge my vow.
60 Sphinx of black quartz judge my vow.
72 Sphinx of black quartz judge my vo

Hawkeye

Technology: PostScript Single Master

PostScript Name: Hawkeye

Version: 001.000

Font Suitcase File: Hawkeye.bmap

Font Outline File: Hawke

by Ray Larabie 1997 - freeware swankarmy.net/larabiefonts

A B C D E F G H I J K L M N O P
A B C D E F G H I J K L M N O P
1 2 3 4 5 6 7 8 9 0 + [, - . / : ;

WHILE THE BASIC SHAPES OF LETTERS HAVE
NOT CHANGED MUCH IN HUNDREDS OF
YEARS, THERE HAVE BEEN THOUSANDS OF
VARIATIONS ON THE THEME. THERE ARE
SPECIAL TYPES FOR TELEPHONE BOOKS,
NEWSPAPERS AND MAGAZINES, AND FOR

8 SPHINX OF BLACK QUAREZ JUDGE MY VOW.
10 SPHINX OF BLACK QUAREZ JUDGE MY VOW.
12 SPHINX OF BLACK QUAREZ JUDGE MY VOW.
14 SPHINX OF BLACK QUAREZ JUDGE MY VOW.
18 SPHINX OF BLACK QUAREZ JUDGE MY VOW.
24 SPHINX OF BLACK QUAREZ JUDGE
30 SPHINX OF BLACK QUARE
36 SPHINX OF BLACK QU
48 SPHINX OF BLA
60 SPHINX OF B
72 SPHINX O

Heavy Heap

Technology: PostScript Single Master
PostScript Name: HeavyHeap
Version: 001.000
Font Suitcase File: Heavy Heap.bmap
Font Outline File: HeavyHea
by Ray Larabie 1997 freeware www.swankarmy.net/larabiefonts

abcdefghijklmnopqrstuvwxyz
abcdefghijklmnopqrstuvwxyz
1234567890 & .,: !?

While the basic shapes of letters have not changed much in hundreds of years, there have been thousands of variations on the theme. There are special types for telephone books, newspapers and magazines, and for the exclusive use of corporations. Some typefaces have a leisurely look about them while conforming to everyday typographic expectations. Others were born with unusual,

8 SPXinx OF BLACK QUARTZ JUDGE MY YOW.

10 SPXinx OF BLACK QUARTZ JUDGE MY YOW.

12 SPXinx OF BLACK QUARTZ JUDGE MY YOW.

14 SPXinx OF BLACK QUARTZ JUDGE MY YOW.

18 SPXinx OF BLACK QUARTZ JUDGE MY YOW.

24 SPXinx OF BLACK QUARTZ JUDGE MY YOW.

30 SPXinx OF BLACK QUARTZ JUDGE MY YOW.

36 SPXinx OF BLACK QUARTZ JUDGE MY

48 SPXinx OF BLACK QUARTZ J

Hello Larry

Technology: PostScript Single Master
PostScript Name: HelloLarry
Version: 001.000
Font Suitcase File: Hello Larry.bmap
Font Outline File: HelloLar
by Ray Larabie 1997 - freeware

9 B E C D P G H i j k l m n o p q r s t

9 B E C D P G H i j k l m n o p q r s t

1 2 3 4 5 6 7 8 9 0 (, . : # _ ?)

WHILE THE BASIC SHAPES OF LETTERS HAVE NOT CHANGED MUCH IN HUNDREDS OF YEARS, THERE HAVE BEEN THOUSANDS OF VARIATIONS ON THE THEME. THERE ARE SPECIAL TYPES FOR TELEPHONE BOOKS, NEWSPAPERS AND MAGAZINES, AND FOR THE EXCLUSIVE USE OF CORPORATIONS. SOME

8 SPH̄RX OF ELDER QWRTZ JUDGE MY VOW.
10 SPH̄RX OF ELDER QWRTZ JUDGE MY VOW.
12 SPH̄RX OF ELDER QWRTZ JUDGE MY VOW.
14 SPH̄RX OF ELDER QWRTZ JUDGE MY VOW.
18 SPH̄RX OF ELDER QWRTZ JUDGE MY VOW.
24 SPH̄RX OF ELDER QWRTZ JUDGE MY
30 SPH̄RX OF ELDER QWRTZ JUD
36 SPH̄RX OF ELDER QWRT
48 SPH̄RX OF ELDER
60 SPH̄RX OF EL
72 SPH̄RX OF E

Hemi Head 426

Technology: PostScript Single Master
PostScript Name: HemiHead426
Version: 001.000
Font Suitcase File: Hemi Head 426.bmap
Font Outline File: HemiHea
by Ray Larabie -freeware rlarabie@hotmail.com

***abcdefghijklmnopqrstuvwxyz
ABCDEFGHIJKLMNOPQRSTUVWXYZ
1234567890 \$%&@.,:#!?~***

While the basic shapes of letters have not changed much in hundreds of years, there have been thousands of variations on the theme. There are special types for telephone books, newspapers and magazines, and for the exclusive use of corporations. Some typefaces have a leisurely look about them while conforming to

8 ***Sphinx of black quartz judge my vow.***

10 ***Sphinx of black quartz judge my vow.***

12 ***Sphinx of black quartz judge my vow.***

14 ***Sphinx of black quartz judge my vow.***

18 ***Sphinx of black quartz judge my vow.***

24 ***Sphinx of black quartz judge my vow.***

30 ***Sphinx of black quartz judge my***

36 ***Sphinx of black quartz judg***

48 ***Sphinx of black quar***

60 ***Sphinx of black***

72 ***Sphinx of blac***

Highway to Heck

Technology: PostScript Single Master
PostScript Name: HighwaytoHeck
Version: 001.000
Font Suitcase File: Highway to Heck.bmap
Font Outline File: HighwHec
by Ray Larabie - freeware rlarabie@hotmail.com

abcdefghijklmnopqrstuvwxyz
ABCDEFGHIJKLMNOPQRSTUVWXYZ
1234567890 \$%&(.,:;#!?)

While the basic shapes of letters have not changed much in hundreds of years, there have been thousands of variations on the theme. There are special types for telephone books, newspapers and magazines, and for the exclusive use of corporations. Some typefaces have a leisurely look about them while conforming to everyday typographic expectations. Others

8 Sphinx of black quartz judge my vow.

10 Sphinx of black quartz judge my vow.

12 Sphinx of black quartz judge my vow.

14 Sphinx of black quartz judge my vow.

18 Sphinx of black quartz judge my vow.

24 Sphinx of black quartz judge my vow.

30 Sphinx of black quartz judge my vow

36 Sphinx of black quartz judge m

48 Sphinx of black quartz

60 Sphinx of black qu

72 Sphinx of black

Holy Smokes

Technology: PostScript Single Master

PostScript Name: HolySmokes

Version: 001.000

Font Suitcase File: Holy Smokes.bmap

Font Outline File: HolySmo

\\(C) 1999 Ray Larabie - rlarabie@hotmail.com

A B C D E F G H I J K L M N O P Q R S T U V W X Y Z
A B C D E F G H I J K L M N O P Q R S T U V W X Y Z
1 2 3 4 5 6 7 8 9 0 . , * # ! ?

WHILE THE BASIC SHAPES OF LETTERS HAVE NOT CHANGED MUCH IN HUNDREDS OF YEARS, THERE HAVE BEEN THOUSANDS OF VARIATIONS ON THE THEME. THERE ARE SPECIAL TYPES FOR TELEPHONE BOOKS, NEWSPAPERS AND MAGAZINES, AND FOR THE EXCLUSIVE USE OF CORPORATIONS. SOME TYPEFACES HAVE A LEISURELY LOOK ABOUT THEM WHILE CONFORMING TO EVERYDAY TYPOGRAPHIC EXPECTATIONS. OTHERS WERE BORN WITH UNUSUAL, YET CASUAL, SHAPES AND

8 SPHINX OF BLACK QUARTZ JUDGE MY VOW.

10 SPHINX OF BLACK QUARTZ JUDGE MY VOW.

12 SPHINX OF BLACK QUARTZ JUDGE MY VOW.

14 SPHINX OF BLACK QUARTZ JUDGE MY VOW.

18 SPHINX OF BLACK QUARTZ JUDGE MY VOW.

24 SPHINX OF BLACK QUARTZ JUDGE MY VOW.

30 SPHINX OF BLACK QUARTZ JUDGE MY VOW.

36 SPHINX OF BLACK QUARTZ JUDGE MY

48 SPHINX OF BLACK QUARTZ J

60 SPHINX OF BLACK QUAR

72 SPHINX OF BLACK Q

Home Sweet Home

Technology: PostScript Single Master
PostScript Name: HomeSweetHome
Version: 001.000
Font Suitcase File: Home Sweet Home.bmap
Font Outline File: HomeSweHom
by Ray Larabie 1997 - freeware

A B C D E F G H I J K L M N O
A B C D E F G H I J K L M N O
1 2 3 4 5 6 7 8 9 0 * % & ! , . : ;

WHILE THE BASIC SHAPES OF LETTERS
HAVE NOT CHANGED MUCH IN HUNDREDS
OF YEARS, THERE HAVE BEEN
THOUSANDS OF VARIATIONS ON THE
THEME. THERE ARE SPECIAL TYPES FOR
TELEPHONE BOOKS, NEWSPAPERS AND

8 SPHINX OF BLACK QUARTZ JUDGE MY VOW.
10 SPHINX OF BLACK QUARTZ JUDGE MY VOW.
12 SPHINX OF BLACK QUARTZ JUDGE MY VOW.
14 SPHINX OF BLACK QUARTZ JUDGE MY VOW.
18 SPHINX OF BLACK QUARTZ JUDGE MY V
24 SPHINX OF BLACK QUARTZ JU
30 SPHINX OF BLACK QUARR
36 SPHINX OF BLACK Q
48 SPHINX OF BL
60 SPHINX OF
72 SPHINX O

Hooked on Booze

Technology: PostScript Single Master
PostScript Name: HookedonBooze
Version: 001.000
Font Suitcase File: Hooked on Booze.bmap
Font Outline File: HookeBoo
by Ray Larabie 1997 - freeware www.delirium.com/larabiefonts

abcdefghijklmnopqrstuvwxyz
ABCDEFGHIJKLMNOPQRSTUVWXYZ
1234567890 %&.,:#!?)

While the basic shapes of letters have not changed much in hundreds of years, there have been thousands of variations on the theme. There are special types for telephone books, newspapers and magazines, and for the exclusive use of corporations. Some typefaces have a leisurely look about them while conforming to every day typographic expectations. Others were born with unusual, yet casual, shapes and make the best of it.

8 Sphinx of black quartz judge my vow.
10 Sphinx of black quartz judge my vow.
12 Sphinx of black quartz judge my vow.
14 Sphinx of black quartz judge my vow.
18 Sphinx of black quartz judge my vow.
24 Sphinx of black quartz judge my vow.
30 Sphinx of black quartz judge my vow.
36 Sphinx of black quartz judge my vow.
48 Sphinx of black quartz judge my vow.
60 Sphinx of black quartz judge my vow.
72 Sphinx of black quartz judge my vow.

Hooked Up 101

Technology: PostScript Single Master

PostScript Name: HookedUp101

Version: 001.000

Font Suitcase File: Hooked Up 101.bmap

Font Outline File: HookeUp1

1998RayLarabie-based on des. by ronald@vrproductions.com-RonaldSansone

abcdefghijklmnopqrstuvwxyz
ABCDEFGHIJKLMNOPQRSTUVWXYZ
1234567890 \$%&[...:#!?]

While the basic shapes of letters have not changed much in hundreds of years, there have been thousands of variations on the theme. There are special types for telephone books, newspapers and magazines, and for the exclusive use of corporations. Some typefaces have a leisurely look about them while conforming to everyday typographic expectations. Others were born with unusual, yet casual, shapes and make the best of it.

8 *Sphinx of black quartz judge my vow.*

10 *Sphinx of black quartz judge my vow.*

12 *Sphinx of black quartz judge my vow.*

14 *Sphinx of black quartz judge my vow.*

18 *Sphinx of black quartz judge my vow.*

24 *Sphinx of black quartz judge my vow.*

30 *Sphinx of black quartz judge my vow.*

36 *Sphinx of black quartz judge my vow.*

48 *Sphinx of black quartz judge*

60 *Sphinx of black quartz j*

72 *Sphinx of black quar*

Horsepower

Technology: PostScript Single Master

PostScript Name: Horsepower

Version: 001.000

Font Suitcase File: Horsepower.bmap

Font Outline File: Horse

1996 Ray Larabie rlarabie@passport.ca - freeware <http://www.passport.ca/~rlarabie>

AbCdEfGhIjKlMnOpQrStUvWxYz

AbCdEfGhIjKlMnOpQrStUvWxYz

1234567890 \$%+[,;:'"!@]

WHILE THE BASIC SHAPES OF LETTERS HAVE NOT CHANGED MUCH IN HUNDREDS OF YEARS, THERE HAVE BEEN THOUSANDS OF VARIATIONS ON THE THEME. THERE ARE SPECIAL TYPES FOR TELEPHONE BOOKS, NEWSPAPERS AND MAGAZINES, AND FOR THE EXCLUSIVE USE OF CORPORATIONS. SOME TYPEFACES HAVE A LEISURELY LOOK ABOUT THEM WHILE CONFORMING TO EVERYDAY TYPOGRAPHIC EXPECTATIONS, OTHERS WERE BORN WITH UNUSUAL, YET CATCHY, SHAPES AND MAKE THE BEST OF IT.

8 ZPHIN: OF BLACK QUARTZ JUDEE MY VOW.

10 ZPHIN: OF BLACK QUARTZ JUDEE MY VOW.

12 ZPHIN: OF BLACK QUARTZ JUDEE MY VOW.

14 ZPHIN: OF BLACK QUARTZ JUDEE MY VOW.

18 ZPHIN: OF BLACK QUARTZ JUDEE MY VOW.

24 ZPHIN: OF BLACK QUARTZ JUDEE MY VOW.

30 ZPHIN: OF BLACK QUARTZ JUDEE MY VOW.

36 ZPHIN: OF BLACK QUARTZ JUDEE MY VOW.

48 ZPHIN: OF BLACK QUARTZ JUDEE

60 ZPHIN: OF BLACK QUARTZ

72 ZPHIN: OF BLACK QU

Hots

Technology: PostScript Single Master

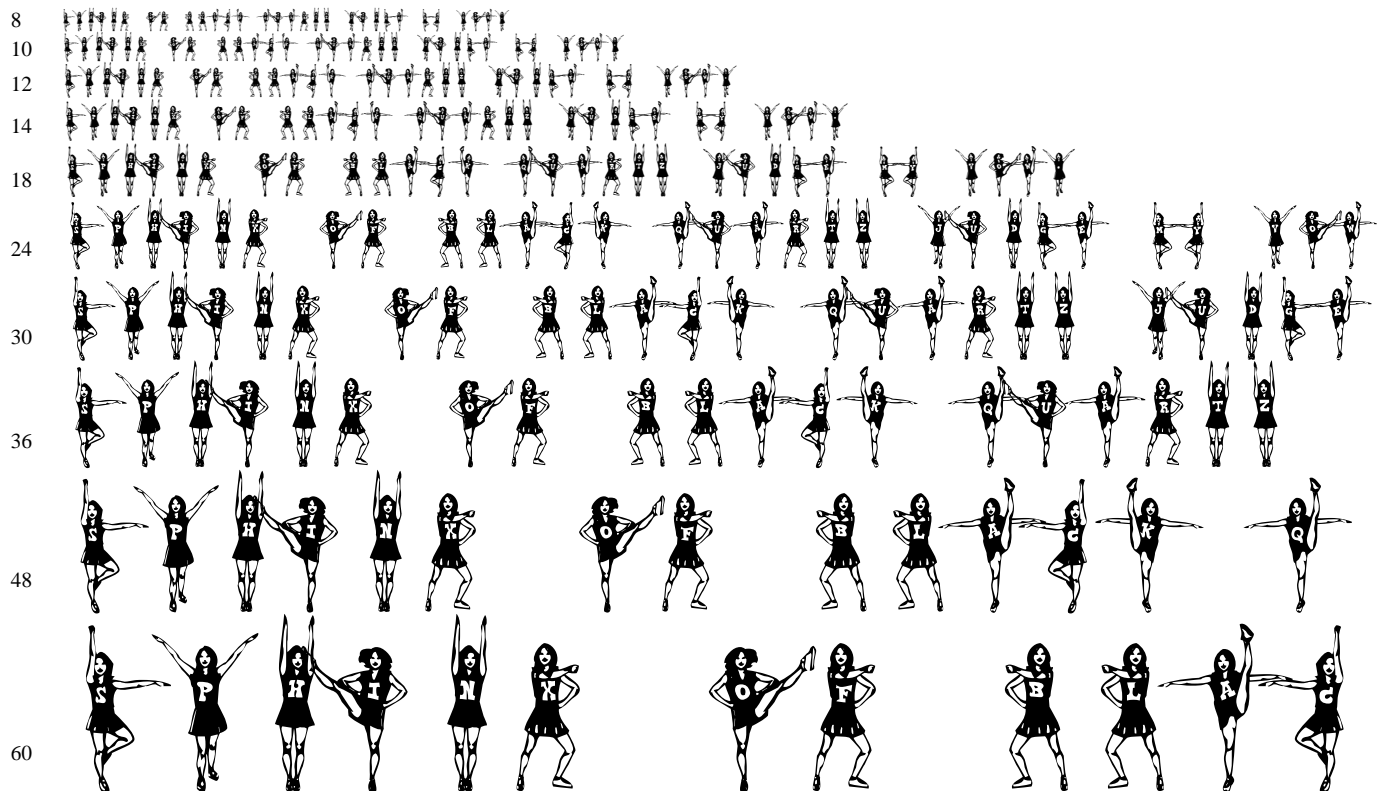
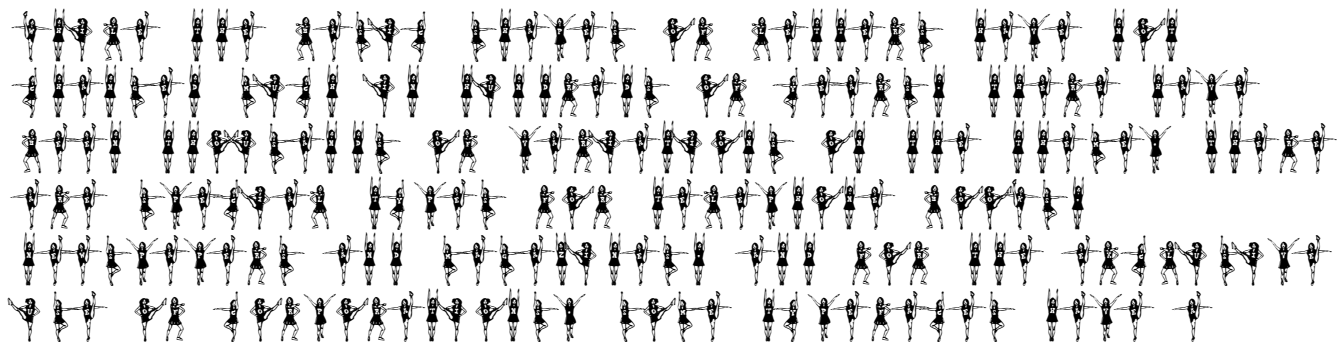
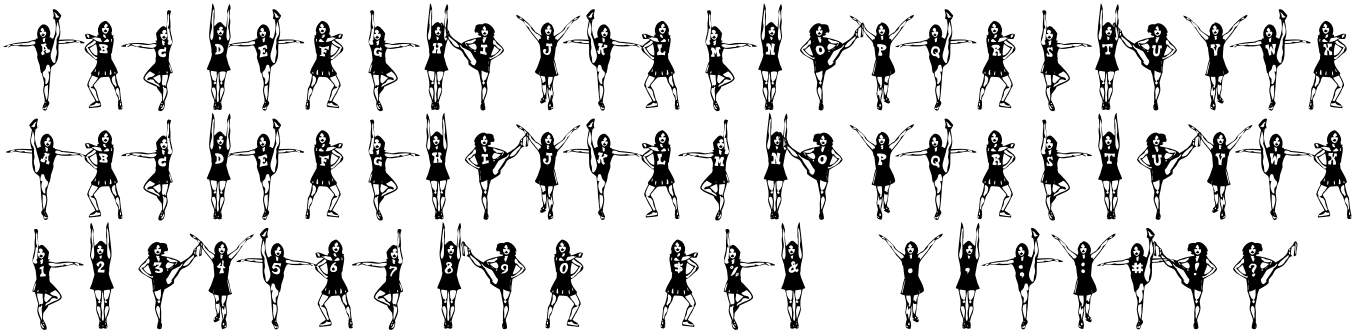
PostScript Name: Hots

Version: 001.000

Font Suitcase File: Hots.bmap

Font Outline File: Hots

\\(C) 1999 Ray Larabie - rlarabie@hotmail.com



Hurontario

Technology: PostScript Single Master

PostScript Name: Hurontario

Version: 001.000

Font Suitcase File: Hurontario.bmap

Font Outline File: Huron

\\(C) 1999 Ray Larabie - rlarabie@hotmail.com

abcdefghijklmnopqrstuvwxyz

ABCDEFGHIJKLMNOPQRSTUVWXYZ

1234567890 \$%&'()*+,-./:;<=>?@

While the basic shapes of letters have not changed much in hundreds of years, there have been thousands of variations on the theme. There are special types for telephone books, newspapers and magazines, and for the exclusive use of corporations. Some typefaces have a leisurely look about them while conforming to everyday typographic expectations. Others were born with unusual, yet casual, shapes and make the best of it.

8 Sphinx of black quartz judge my name

10 Sphinx of black quartz judge my name

12 Sphinx of black quartz judge my name

14 Sphinx of black quartz judge my name

18 Sphinx of black quartz judge my name

24 Sphinx of black quartz judge my name

30 Sphinx of black quartz judge my name

36 Sphinx of black quartz judge my name

48 Sphinx of black quartz judge my name

60 Sphinx of black quartz judge my name

72 Sphinx of black quartz judge my name

Hurry Up

Technology: PostScript Single Master

PostScript Name: HurryUp

Version: 001.000

Font Suitcase File: Hurry Up.bmap

Font Outline File: HurryUp

\(c) 1998 Ray Larabie - Larabie Fonts freeware

ABCDEFGHIJKLMNOPQRSTUVWXYZ
ABCDEFGHIJKLMNOPQRSTUVWXYZ
1234567890 \$%&[.,;: !?]

WHILE THE BASIC SHAPES OF LETTERS HAVE NOT CHANGED MUCH IN HUNDREDS OF YEARS, THERE HAVE BEEN THOUSANDS OF VARIATIONS ON THE THEME. THERE ARE SPECIAL TYPES FOR TELEPHONE BOOKS, NEWSPAPERS AND MAGAZINES, AND FOR THE EXCLUSIVE USE OF CORPORATIONS. SOME TYPEFACES HAVE A LEISURELY LOOK ABOUT THEM WHILE CONFORMING TO EVERYDAY

8 SPHINX OF BLACK QUARTZ JUDGE MY VOW.

10 SPHINX OF BLACK QUARTZ JUDGE MY VOW.

12 SPHINX OF BLACK QUARTZ JUDGE MY VOW.

14 SPHINX OF BLACK QUARTZ JUDGE MY VOW.

18 SPHINX OF BLACK QUARTZ JUDGE MY VOW.

24 SPHINX OF BLACK QUARTZ JUDGE MY VOW.

30 SPHINX OF BLACK QUARTZ JUDGE MY

36 SPHINX OF BLACK QUARTZ JUD

48 SPHINX OF BLACK QUAR

60 SPHINX OF BLACK

72 SPHINX OF BLA

Husky Stash

Technology: PostScript Single Master
PostScript Name: HuskyStash
Version: 001.000
Font Suitcase File: Husky Stash.bmap
Font Outline File: HuskySta
Ray Larabie 1998 freeware-- swankarmy.net/larabiefonts

abcdefghijklmnopqrstuvwxyz
ABCDEFGHIJKLMNOPQRSTUVWXYZ
1234567890 %&[.,:;!/?]

While the basic shapes of letters have not changed much in hundreds of years, there have been thousands of variations on the theme. There are special types for telephone books, newspapers and magazines, and for the exclusive use of corporations. Some typefaces have a leisurely look about them while conforming to everyday typographic expectations. Others were born with unusual, yet casual, shapes

8 *Sphinx of black quartz judge my vow.*
10 *Sphinx of black quartz judge my vow.*
12 *Sphinx of black quartz judge my vow.*
14 *Sphinx of black quartz judge my vow.*
18 *Sphinx of black quartz judge my vow.*
24 *Sphinx of black quartz judge my vow.*
30 *Sphinx of black quartz judge my vow.*
36 *Sphinx of black quartz judge my v*
48 *Sphinx of black quartz ju*
60 *Sphinx of black qua*
72 *Sphinx of black*

HydrogenWhiskey

Technology: PostScript Single Master
PostScript Name: HydrogenWhiskey
Version: 001.000
Font Suitcase File: HydrogenWhiskey.bmap
Font Outline File: HydroWhi
by Ray Larabie 1997 - freeware

abcdefghijklmnopqrstuvwxyz
abcdefghijklmnopqrstuvwxyz
1234567890 \$%.&().,;: !?)

WHILE THE BASIC SHAPES OF LETTERS HAVE NOT CHANGED MUCH IN HUNDREDS OF YEARS, THERE HAVE BEEN THOUSANDS OF VARIATIONS ON THE THEME. THERE ARE SPECIAL TYPES FOR TELEPHONE BOOKS, NEWSPAPERS AND MAGAZINES, AND FOR THE EXCLUSIVE USE OF CORPORATIONS. SOME TYPEFACES HAVE A LEISURELY LOOK ABOUT THEM WHILE CONFORMING TO EVERYDAY TYPOGRAPHIC EXPECTATIONS. OTHERS

8 SPHINX OF BLACK QUARTZ JUDGE MY VOW.
10 SPHINX OF BLACK QUARTZ JUDGE MY VOW.
12 SPHINX OF BLACK QUARTZ JUDGE MY VOW.
14 SPHINX OF BLACK QUARTZ JUDGE MY VOW.
18 SPHINX OF BLACK QUARTZ JUDGE MY VOW.
24 SPHINX OF BLACK QUARTZ JUDGE MY VOW.
30 SPHINX OF BLACK QUARTZ JUDGE MY VOW.
36 SPHINX OF BLACK QUARTZ JUDGE M
48 SPHINX OF BLACK QUARTZ
60 SPHINX OF BLACK QU
72 SPHINX OF BLACK

IcicleCountry

Technology: PostScript Single Master
PostScript Name: IcicleCountry
Version: 001.000
Font Suitcase File: Icicle Country.bmap
Font Outline File: IciclCou
by Ray Larabie 1997 - freeware

a b c d e f g h i j k l m n o p q r s t
A B C D E F G H I J K L M N O P Q R
1 2 3 4 5 6 7 8 9 0 \$ % ^ & (_ , . / : # ! ?)

While the basic shapes of letters have not changed much in hundreds of years, there have been thousands of variations on the theme. There are special types for telephone books, newspapers and magazines, and for the exclusive use of corporations. Some

8 **Sphinx of black quartz judge my vow.**

10 **Sphinx of black quartz judge my vow.**

12 **Sphinx of black quartz judge my vow.**

14 **Sphinx of black quartz judge my vow.**

18 **Sphinx of black quartz judge my vow.**

24 **Sphinx of black quartz judge my**

30 **Sphinx of black quartz ju**

36 **Sphinx of black quarti**

48 **Sphinx of black**

Induction

Technology: PostScript Single Master

PostScript Name: Induction

Version: 001.000

Font Suitcase File: Induction.bmap

Font Outline File: Induc

Freeware typeface 1996 by Ray Larabie - distribute freely ... just don't hack my name off it with Font Monster

A B C C D E F G H I J K
a b c c d e f g h i j k
l m n o p q r s t u v w x y z

WHILE THE BASIC SHAPES
OF LETTERS HAVE NOT
CHANGED MUCH IN
HUNDREDS OF YEARS,
THERE HAVE BEEN
THOUSANDS OF VARIATIONS

8 SPHINX OF BLACK QUARTZ JUDGE MY VOW.
10 SPHINX OF BLACK QUARTZ JUDGE MY VOW.
12 SPHINX OF BLACK QUARTZ JUDGE MY VO
14 SPHINX OF BLACK QUARTZ JUDGE
18 SPHINX OF BLACK QUARTZ
24 SPHINX OF BLACK Q
30 SPHINX OF BLAC
36 SPHINX OF BL
48 SPHINX O
60 SPHINX
72 SPHIN

Inflammable Age

Technology: PostScript Single Master
PostScript Name: InflammableAge
Version: 001.000
Font Suitcase File: Inflammable Age.bmap
Font Outline File: InflaAge
Ray Larabie 1996 Freeware

A B C D E F G H I J K L M N O P Q R S T U V W X Y Z

A B C D E F G H I J K L M N O P Q R S T U V W X Y Z

1 2 3 4 5 6 7 8 9 0 \$ % & (, . : ; # ! ?)

WHILE THE BASIC SHAPES OF LETTERS HAVE NOT CHANGED MUCH IN HUNDREDS OF YEARS, THERE HAVE BEEN THOUSANDS OF VARIATIONS ON THE THEME. THERE ARE SPECIAL TYPES FOR TELEPHONE BOOKS, NEWSPAPERS AND MAGAZINES, AND FOR THE EXCLUSIVE USE OF CORPORATIONS. SOME TYPEFACES HAVE A LEISURELY LOOK ABOUT THEM WHILE CONFORMING TO EVERYDAY TYPOGRAPHIC EXPECTATIONS. OTHERS WERE BORN WITH UNUSUAL, YET CASUAL, SHAPES AND MAKE THE BEST OF IT.

8 SPHINX OF BLACK QUARTZ JUDGE MY VOW.

10 SPHINX OF BLACK QUARTZ JUDGE MY VOW.

12 SPHINX OF BLACK QUARTZ JUDGE MY VOW.

14 SPHINX OF BLACK QUARTZ JUDGE MY VOW.

18 SPHINX OF BLACK QUARTZ JUDGE MY VOW.

24 SPHINX OF BLACK QUARTZ JUDGE MY VOW.

30 SPHINX OF BLACK QUARTZ JUDGE MY VOW.

36 SPHINX OF BLACK QUARTZ JUDGE MY VOW.

48 SPHINX OF BLACK QUARTZ JUDGE MY

60 SPHINX OF BLACK QUARTZ JUD

72 SPHINX OF BLACK QUART

InstantTunes

Technology: PostScript Single Master
PostScript Name: InstantTunes
Version: 001.000
Font Suitcase File: InstantTunes.bmap
Font Outline File: InstaTun
by Ray Larabie 1997 - freeware

A B C D E F G H I J K L M N O P Q
R A B C D E F G H I J K L M N O P Q R
1 2 3 4 5 6 7 8 9 0 % & (. , ; : # ! ?)

WHILE THE BASIC SHAPES OF LETTERS HAVE NOT
CHANGED MUCH IN HUNDREDS OF YEARS,
THERE HAVE BEEN THOUSANDS OF
VARIATIONS ON THE THEME. THERE ARE
SPECIAL TYPES FOR TELEPHONE BOOKS,
NEWSPAPERS AND MAGAZINES, AND

8 SPHILIX OF BLACK QUARTZ JUDGE STY NOXI.
10 SPHILIX OF BLACK QUARTZ JUDGE STY NOXI.
12 SPHILIX OF BLACK QUARTZ JUDGE STY NOXI.
14 SPHILIX OF BLACK QUARTZ JUDGE STY NOXI.
18 SPHILIX OF BLACK QUARTZ JUDGE STY NO
24 SPHILIX OF BLACK QUARTZ JUDGE
30 SPHILIX OF BLACK QUART
36 SPHILIX OF BLACK QU
48 SPHILIX OF BLAC
60 SPHILIX OF BL
72 SPHILIX OF

Interplanetary Crap

Technology: PostScript Single Master
PostScript Name: InterplanetaryCrap
Version: 001.000
Font Suitcase File: Interplanetary Crap.bmap
Font Outline File: InterCra
by Ray Larabie - freeware - rlarabie@hotmail.com

a b c d e f g h i j k l m n o p q r s t u v w x y z
A B C D E F G H I J K L M N O P Q R S T U V W X
1 2 3 4 5 6 7 8 9 0 ! % & (. , ; : # ! ? }

While the basic shapes of letters have not changed much in hundreds of years, there have been thousands of variations on the theme. There are special types for telephone books, newspapers and magazines, and for the exclusive use of corporations. Some typefaces have a leisurely look about them while conforming to everyday typographic expectations. Others

8 Sphinx of black quartz judge my vow.
10 Sphinx of black quartz judge my vow.
12 Sphinx of black quartz judge my vow.
14 Sphinx of black quartz judge my vow.
18 Sphinx of black quartz judge my vow.
24 Sphinx of black quartz judge my vow.
30 Sphinx of black quartz judge my vow
36 Sphinx of black quartz judge
48 Sphinx of black quartz
60 Sphinx of black qu
72 Sphinx of blac

Iomanoid

Technology: PostScript Single Master
PostScript Name: Iomanoid
Version: 001.000
Font Suitcase File: Iomanoid.bmap
Font Outline File: Ioman
Copyright \(\c\) Ray Larabee, 2000. All rights reserved.

A B C D E F G H I J K L M N O P Q R S T U V W X
A B C D E F G H I J K L M N O P Q R S T U V W X
1 2 3 4 5 6 7 8 9 0 \$ % & . , ; : ! ?

WHILE THE BASIC SHAPES OF LETTERS HAVE NOT CHANGED MUCH
IN HUNDREDS OF YEARS, THERE HAVE BEEN THOUSANDS OF
VARIATIONS ON THE THEME. THERE ARE SPECIAL TYPES FOR
TELEPHONE BOOKS, NEWSPAPERS AND MAGAZINES, AND FOR THE
EXCLUSIVE USE OF CORPORATIONS. SOME TYPEFACES HAVE A
LEISURELY LOOK ABOUT THEM WHILE CONFORMING TO

8 SPHINX OF BLACK QUARTZ JUDGE MY VOW.

10 SPHINX OF BLACK QUARTZ JUDGE MY VOW.

12 SPHINX OF BLACK QUARTZ JUDGE MY VOW.

14 SPHINX OF BLACK QUARTZ JUDGE MY VOW.

18 SPHINX OF BLACK QUARTZ JUDGE MY VOW.

24 SPHINX OF BLACK QUARTZ JUDGE MY VOW.

30 SPHINX OF BLACK QUARTZ JUDGE MY

36 SPHINX OF BLACK QUARTZ JUD

48 SPHINX OF BLACK QU

Jigsaw Trouserdrop

Technology: PostScript Single Master
PostScript Name: JigsawTrouserdrop
Version: 001.000
Font Suitcase File: Jigsaw Trouserdrop.bmap
Font Outline File: JigsaTro
\(c) 1998 Ray Larabie freeware rlarabie@hotmail.com

ABCDEFGHIJKLMNOPQRSTUVWXYZ
ABCDEFGHIJKLMNOPQRSTUVWXYZ
1234567890 \$%&(.,:;#!?)

WHILE THE BASIC SHAPES OF LETTERS HAVE NOT CHANGED MUCH IN
HUNDREDS OF YEARS, THERE HAVE BEEN THOUSANDS OF VARIATIONS ON
THE THEME. THERE ARE SPECIAL TYPES FOR TELEPHONE BOOKS,
NEWSPAPERS AND MAGAZINES, AND FOR THE EXCLUSIVE USE OF
CORPORATIONS. SOME TYPEFACES HAVE A LEISURELY LOOK ABOUT THEM
WHILE CONFORMING TO EVERYDAY TYPOGRAPHIC EXPECTATIONS.

8 SPHINX OF BLACK QUARTZ JUDGE MY VOW.
10 SPHINX OF BLACK QUARTZ JUDGE MY VOW.
12 SPHINX OF BLACK QUARTZ JUDGE MY VOW.
14 SPHINX OF BLACK QUARTZ JUDGE MY VOW.
18 SPHINX OF BLACK QUARTZ JUDGE MY VOW.
24 SPHINX OF BLACK QUARTZ JUDGE MY VOW.
30 SPHINX OF BLACK QUARTZ JUDGE MY VO
36 SPHINX OF BLACK QUARTZ JUDGE
48 SPHINX OF BLACK QUART
60 SPHINX OF BLACK Q
72 SPHINX OF BLAC

Jingopop

Technology: PostScript Single Master
PostScript Name: Jingopop
Version: 001.000
Font Suitcase File: Jingopop.bmap
Font Outline File: Jingo
by Ray Larabie - freeware - rlarabie@hotmail.com

abcdefghijklmnopqrstuvwxyz

abcdefghijklmnopqrstuvwxyz

1234567890 .,:;!?

while the basic shapes of letters have not changed much in hundreds of years, there have been thousands of variations on the theme. there are special types for telephone books, newspapers and magazines, and for the exclusive use of corporations. some typefaces have a leisurely look about them while conforming to everyday typographic expectations. others were born with unusual, yet casual, shapes and make the best of it.

8 sphinx of black quartz judge my voice.

10 sphinx of black quartz judge my voice.

12 sphinx of black quartz judge my voice.

14 sphinx of black quartz judge my voice.

18 sphinx of black quartz judge my voice.

24 sphinx of black quartz judge my voice.

30 sphinx of black quartz judge my voice.

36 sphinx of black quartz judge my voice.

48 sphinx of black quartz judge my voice.

60 sphinx of black quartz judge my voice.

72 sphinx of black quartz judge

Johnny Fever

Technology: PostScript Single Master

PostScript Name: JohnnyFever

Version: 001.000

Font Suitcase File: Johnny Fever.bmap

Font Outline File: JohnnFev

by Ray Larabie freeware - rlarabie@hotmail.com

A B C D E F G H I J K L M N O P Q R S T U V W X Y Z
A B C D E F G H I J K L M N O P Q R S T U V W X Y Z
1 2 3 4 5 6 7 8 9 0 \$ % & (, . : ; # ! ?)

WHILE THE BASIC SHAPES OF LETTERS HAVE NOT CHANGED MUCH IN
HUNDREDS OF YEARS, THERE HAVE BEEN THOUSANDS OF
VARIATIONS ON THE THEME. THERE ARE SPECIAL TYPES FOR
TELEPHONE BOOKS, NEWSPAPERS AND MAGAZINES, AND FOR THE
EXCLUSIVE USE OF CORPORATIONS. SOME TYPEFACES HAVE A
LEISURELY LOOK ABOUT THEM WHILE CONFORMING TO EVERYDAY

8 SPHINX OF BLACK QUARTZ JUDGE MY VOW.

10 SPHINX OF BLACK QUARTZ JUDGE MY VOW.

12 SPHINX OF BLACK QUARTZ JUDGE MY VOW.

14 SPHINX OF BLACK QUARTZ JUDGE MY VOW.

18 SPHINX OF BLACK QUARTZ JUDGE MY VOW.

24 SPHINX OF BLACK QUARTZ JUDGE MY VOW.

30 SPHINX OF BLACK QUARTZ JUDGE MY V

36 SPHINX OF BLACK QUARTZ JUDGE

48 SPHINX OF BLACK QUART

60 SPHINX OF BLACK Q

72 SPHINX OF BLAC

Joy Circuit

Technology: PostScript Single Master

PostScript Name: JoyCircuit

Version: 001.000

Font Suitcase File: Joy Circuit.bmap

Font Outline File: JoyCir

Freeware by Ray Larabie 1997 www.globalserve.net/~rlarabie

A B C D E F G H I J
A B C D E F G H I J
1 2 3 4 5 6 7 8 9 0

WHILE THE BASIC SHAPES
OF LETTERS HAVE NOT
CHANGED MUCH IN
HUNDREDS OF YEARS,
THERE HAVE BEEN
THOUSANDS OF

8 SPHINX OF BLACK QUARTZ JUDGE MY VOWL
10 SPHINX OF BLACK QUARTZ JUDGE MY VOWL
12 SPHINX OF BLACK QUARTZ JUDGE MY V
14 SPHINX OF BLACK QUARTZ JUDGE
18 SPHINX OF BLACK QUARTZ
24 SPHINX OF BLACK Q
30 SPHINX OF BLA
36 SPHINX OF B
48 SPHINX O
60 SPHINX
72 SPHIN

Joystix

Technology: PostScript Single Master

PostScript Name: Joystix

Version: 001.000

Font Suitcase File: Joystix.bmap

Font Outline File: Joyst

freeware by Ray Larabie 1996 - distribute freely..... Manually input. Ref. mostly PAC-MAN. Most other games have a different Y and W. !, & ? differ in early games.

ABCDEFGHIJKLMNOPQRSTUVWXYZ
ABCDEFGHIJKLMNOPQRSTUVWXYZ
1234567890 \$%&(.,:;#/?)

WHILE THE BASIC SHAPES OF LETTERS HAVE NOT CHANGED MUCH IN HUNDREDS OF YEARS, THERE HAVE BEEN THOUSANDS OF VARIATIONS ON THE THEME. THERE ARE SPECIAL TYPES FOR TELEPHONE BOOKS, NEWSPAPERS AND MAGAZINES, AND FOR THE EXCLUSIVE USE OF CORPORATIONS. SOME

8 SPHINX OF BLACK QUARTZ JUDGE MY VOW.

10 SPHINX OF BLACK QUARTZ JUDGE MY VOW.

12 SPHINX OF BLACK QUARTZ JUDGE MY VOW.

14 SPHINX OF BLACK QUARTZ JUDGE MY VOW.

18 SPHINX OF BLACK QUARTZ JUDGE MY VOW.

24 SPHINX OF BLACK QUARTZ JUDGE MY

30 SPHINX OF BLACK QUARTZ J

36 SPHINX OF BLACK QUAR

48 SPHINX OF BLACK

60 SPHINX OF BL

72 SPHINX OF

Karma Suture

Technology: PostScript Single Master
PostScript Name: KarmaSuture
Version: 001.000
Font Suitcase File: Karma Suture.bmap
Font Outline File: KarmaSut
(c) 1998 Ray Larabie - rlarabie@hotmail.com

abcdefghijklmnopqrstuvwxyz
ABCDEFGHIJKLMNOPQRSTUVWXYZ
1234567890 \$%&(.,:;#!?)

While the basic shapes of letters have not changed much in hundreds of years, there have been thousands of variations on the theme. There are special types for telephone books, newspapers and magazines, and for the exclusive use of corporations. Some typefaces have a leisurely look about them while conforming to everyday typographic expectations. Others were born with

8 Sphinx of black quartz judge my vow.
10 Sphinx of black quartz judge my vow.
12 Sphinx of black quartz judge my vow.
14 Sphinx of black quartz judge my vow.
18 Sphinx of black quartz judge my vow.
24 Sphinx of black quartz judge my vow.
30 Sphinx of black quartz judge my vow.
36 Sphinx of black quartz judge my
48 Sphinx of black quartz j
60 Sphinx of black qu
72 Sphinx of black

Kenyan Coffee

Technology: PostScript Single Master
PostScript Name: KenyanCoffee
Version: 001.000
Font Suitcase File: Kenyan Coffee.bmap
Font Outline File: KenyaCof
\\(C\) 1999 Ray Larabie www.hotmail.com

abcdefghijklmnopqrstuvwxyz

ABCDEFGHIJKLMNOPQRSTUVWXYZ

1234567890 \$%&(.,:#!?)

While the basic shapes of letters have not changed much in hundreds of years, there have been thousands of variations on the theme. There are special types for telephone books, newspapers and magazines, and for the exclusive use of corporations. Some typefaces have a leisurely look about them while conforming to everyday typographic expectations. Others were born with unusual, yet casual, shapes and make the best of it.

8 Sphinx of black quartz judge my vow.

10 Sphinx of black quartz judge my vow.

12 Sphinx of black quartz judge my vow.

14 Sphinx of black quartz judge my vow.

18 Sphinx of black quartz judge my vow.

24 Sphinx of black quartz judge my vow.

30 Sphinx of black quartz judge my vow.

36 Sphinx of black quartz judge my vow.

48 Sphinx of black quartz judge my vow.

60 Sphinx of black quartz judge my

72 Sphinx of black quartz jud

Kicking Limos

Technology: PostScript Single Master
PostScript Name: KickingLimos
Version: 001.000
Font Suitcase File: Kicking Limos.bmap
Font Outline File: KickiLim
Ray Larabie - freeware rlarabie@hotmail.com

A B C D E F G H I J K L M N O P Q R S T U
A B C D E F G H I J K L M N O P
1 2 3 4 5 6 7 8 9 0 \$ % & (. , ; : # !

While the basic shapes of letters have not changed much in hundreds of years, there have been thousands of variations on the theme. There are special types for telephone books, newspapers and magazines, and for the exclusive use of corporations. Some

8 SPHINX OF BLACK QUARTZ JUDGE MY VOW.
10 SPHINX OF BLACK QUARTZ JUDGE MY VOW.
12 SPHINX OF BLACK QUARTZ JUDGE MY VOW.
14 SPHINX OF BLACK QUARTZ JUDGE MY VOW.
18 SPHINX OF BLACK QUARTZ JUDGE MY VOW.
24 SPHINX OF BLACK QUARTZ JUDGE MY
30 SPHINX OF BLACK QUARTZ JU
36 SPHINX OF BLACK QUART
48 SPHINX OF BLACK
60 SPHINX OF BLA
72 SPHINX OF B

Kimberley

Technology: PostScript Single Master
PostScript Name: Kimberley
Version: 001.000
Font Suitcase File: Kimberley.bmap
Font Outline File: Kimbe
Copyright \(\c\) Ray Larabie, 2000. All rights reserved.

abcdefghijklmnopqrstuvwxyz
ABCDEFGHIJKLMNOPQRSTUVWXYZ
1234567890 \$%&('.,:;#?!?)

While the basic shapes of letters have not changed much in hundreds of years, there have been thousands of variations on the theme. There are special types for telephone books, newspapers and magazines, and for the exclusive use of corporations. Some typefaces have a leisurely look about them while conforming to everyday

8 **Sphinx of black quartz judge my vow.**

10 **Sphinx of black quartz judge my vow.**

12 **Sphinx of black quartz judge my vow.**

14 **Sphinx of black quartz judge my vow.**

18 **Sphinx of black quartz judge my vow.**

24 **Sphinx of black quartz judge my vow.**

30 **Sphinx of black quartz judge my v**

36 **Sphinx of black quartz judge**

48 **Sphinx of black quart**

King Richard

Technology: PostScript Single Master
PostScript Name: KingRichard
Version: 001.000
Font Suitcase File: King Richard.bmap
Font Outline File: KingRic
by Ray Larabie - freeware rlarabie@hotmail.com

abcdefghijklmnopqrstuvwxyz
ABCDEFGHIJKLMNOPQRSTUVWXYZ
1234567890 \$%&(.,:;#!?)

While the basic shapes of letters have not changed much in hundreds of years, there have been thousands of variations on the theme. There are special types for telephone books, newspapers and magazines, and for the exclusive use of corporations. Some typefaces have a leisurely look about them while conforming to everyday typographic expectations. Others were born with unusual, yet casual, shapes and make the best of it.

8 *Sphinx of black quartz judge my vow.*

10 *Sphinx of black quartz judge my vow.*

12 *Sphinx of black quartz judge my vow.*

14 *Sphinx of black quartz judge my vow.*

18 *Sphinx of black quartz judge my vow.*

24 *Sphinx of black quartz judge my vow.*

30 *Sphinx of black quartz judge my vow.*

36 *Sphinx of black quartz judge my vow.*

48 *Sphinx of black quartz judge*

60 *Sphinx of black quartz j*

72 *Sphinx of black quar*

Kirsty

Technology: PostScript Single Master

PostScript Name: Kirsty

Version: 001.000

Font Suitcase File: Kirsty.bmap

Font Outline File: Kirst

Copyright \(\c\) Ray Larabie, 2000. All rights reserved. Freeware. Dedicated to the late Kirsty MacColl.

ABCDEFGHIJKLMNOPQRSTUVWXYZ

ABCDEFGHIJKLMNOPQRSTUVWXYZ

1234567890 \$%&(.,:;№!?)

WHILE THE BASIC SHAPES OF LETTERS HAVE NOT CHANGED MUCH IN HUNDREDS OF YEARS, THERE HAVE BEEN THOUSANDS OF VARIATIONS ON THE THEME. THERE ARE SPECIAL TYPES FOR TELEPHONE BOOKS, NEWSPAPERS AND MAGAZINES, AND FOR THE EXCLUSIVE USE OF CORPORATIONS. SOME TYPEFACES HAVE A LEISURELY LOOK ABOUT THEM WHILE CONFORMING TO EVERYDAY TYPOGRAPHIC EXPECTATIONS. OTHERS WERE BORN WITH UNUSUAL, YET CASUAL, SHAPES AND

8 **SPHINX OF BLACK QUARTZ JUDGE MY VOW.**

10 **SPHINX OF BLACK QUARTZ JUDGE MY VOW.**

12 **SPHINX OF BLACK QUARTZ JUDGE MY VOW.**

14 **SPHINX OF BLACK QUARTZ JUDGE MY VOW.**

18 **SPHINX OF BLACK QUARTZ JUDGE MY VOW.**

24 **SPHINX OF BLACK QUARTZ JUDGE MY VOW.**

30 **SPHINX OF BLACK QUARTZ JUDGE MY VOW.**

36 **SPHINX OF BLACK QUARTZ JUDGE MY V**

48 **SPHINX OF BLACK QUARTZ JU**

60 **SPHINX OF BLACK QUA**

72 **SPHINX OF BLACK Q**

Kirsty-Italic

Technology: PostScript Single Master

PostScript Name: Kirsty-Italic

Version: 001.000

Font Suitcase File: Kirsty-Italic.bmap

Font Outline File: KirstIta

Copyright \(\c\) Ray Larabee, 2000. All rights reserved. Freeware. Dedicated to the late Kirsty MacColl.

ABCDEFGHIJKLMNOPQRSTUVWXYZ

ABCDEFGHIJKLMNOPQRSTUVWXYZ

1234567890 \$%&(.,:;N°!?)

WHILE THE BASIC SHAPES OF LETTERS HAVE NOT CHANGED MUCH IN HUNDREDS OF YEARS, THERE HAVE BEEN THOUSANDS OF VARIATIONS ON THE THEME. THERE ARE SPECIAL TYPES FOR TELEPHONE BOOKS, NEWSPAPERS AND MAGAZINES, AND FOR THE EXCLUSIVE USE OF CORPORATIONS. SOME TYPEFACES HAVE A LEISURELY LOOK ABOUT THEM WHILE CONFORMING TO EVERYDAY TYPOGRAPHIC EXPECTATIONS. OTHERS WERE BORN WITH UNUSUAL, YET CASUAL, SHAPES AND MAKE THE BEST OF IT.

8 ***SPHINX OF BLACK QUARTZ JUDGE MY VOW.***

10 ***SPHINX OF BLACK QUARTZ JUDGE MY VOW.***

12 ***SPHINX OF BLACK QUARTZ JUDGE MY VOW.***

14 ***SPHINX OF BLACK QUARTZ JUDGE MY VOW.***

18 ***SPHINX OF BLACK QUARTZ JUDGE MY VOW.***

24 ***SPHINX OF BLACK QUARTZ JUDGE MY VOW.***

30 ***SPHINX OF BLACK QUARTZ JUDGE MY VOW.***

36 ***SPHINX OF BLACK QUARTZ JUDGE MY VOW.***

48 ***SPHINX OF BLACK QUARTZ JUDG***

60 ***SPHINX OF BLACK QUARTZ***

72 ***SPHINX OF BLACK QU***

Kirsty-Bold

Technology: PostScript Single Master

PostScript Name: Kirsty-Bold

Version: 001.000

Font Suitcase File: Kirsty-Bold.bmap

Font Outline File: KirstBol

Copyright \(\c\) Ray Larabie, 2000. All rights reserved. Freeware. Dedicated to the late Kirsty MacColl.

**ABCDEFGHIJKLMNOPQRSTUVWXYZ
ABCDEFGHIJKLMNOPQRSTUVWXYZ
1234567890 \$%&(. ,;:№!?)**

**WHILE THE BASIC SHAPES OF LETTERS HAVE NOT CHANGED MUCH IN
HUNDREDS OF YEARS, THERE HAVE BEEN THOUSANDS OF VARIATIONS ON THE
THEME. THERE ARE SPECIAL TYPES FOR TELEPHONE BOOKS, NEWSPAPERS
AND MAGAZINES, AND FOR THE EXCLUSIVE USE OF CORPORATIONS. SOME
TYPEFACES HAVE A LEISURELY LOOK ABOUT THEM WHILE CONFORMING TO
EVERYDAY TYPOGRAPHIC EXPECTATIONS. OTHERS WERE BORN WITH**

8 **SPHINX OF BLACK QUARTZ JUDGE MY VOW.**

10 **SPHINX OF BLACK QUARTZ JUDGE MY VOW.**

12 **SPHINX OF BLACK QUARTZ JUDGE MY VOW.**

14 **SPHINX OF BLACK QUARTZ JUDGE MY VOW.**

18 **SPHINX OF BLACK QUARTZ JUDGE MY VOW.**

24 **SPHINX OF BLACK QUARTZ JUDGE MY VOW.**

30 **SPHINX OF BLACK QUARTZ JUDGE MY VOW.**

36 **SPHINX OF BLACK QUARTZ JUDGE MY**

48 **SPHINX OF BLACK QUARTZ J**

60 **SPHINX OF BLACK QUA**

72 **SPHINX OF BLACK**

Kirsty-Bold Italic

Technology: PostScript Single Master

PostScript Name: Kirsty-BoldItalic

Version: 001.000

Font Suitcase File: Kirsty-Bold Italic.bmap

Font Outline File: KirstBolIta

Copyright \(\c\) Ray Larabie, 2000. All rights reserved. Freeware. Dedicated to the late Kirsty MacColl.

ABCDEFGHIJKLMNOPQRSTUVWXYZ

ABCDEFGHIJKLMNOPQRSTUVWXYZ

1234567890 \$%&(. ,;:№!?)

WHILE THE BASIC SHAPES OF LETTERS HAVE NOT CHANGED MUCH IN HUNDREDS OF YEARS, THERE HAVE BEEN THOUSANDS OF VARIATIONS ON THE THEME. THERE ARE SPECIAL TYPES FOR TELEPHONE BOOKS, NEWSPAPERS AND MAGAZINES, AND FOR THE EXCLUSIVE USE OF CORPORATIONS. SOME TYPEFACES HAVE A LEISURELY LOOK ABOUT THEM WHILE CONFORMING TO EVERYDAY TYPOGRAPHIC EXPECTATIONS. OTHERS WERE BORN WITH UNUSUAL, YET CASUAL, SHAPES AND MAKE THE BEST OF IT.

8 ***SPHINX OF BLACK QUARTZ JUDGE MY VOW.***

10 ***SPHINX OF BLACK QUARTZ JUDGE MY VOW.***

12 ***SPHINX OF BLACK QUARTZ JUDGE MY VOW.***

14 ***SPHINX OF BLACK QUARTZ JUDGE MY VOW.***

18 ***SPHINX OF BLACK QUARTZ JUDGE MY VOW.***

24 ***SPHINX OF BLACK QUARTZ JUDGE MY VOW.***

30 ***SPHINX OF BLACK QUARTZ JUDGE MY VOW.***

36 ***SPHINX OF BLACK QUARTZ JUDGE MY VO***

48 ***SPHINX OF BLACK QUARTZ JUD***

60 ***SPHINX OF BLACK QUAR***

72 ***SPHINX OF BLACK Q***

Kirsty-Ink

Technology: PostScript Single Master

PostScript Name: Kirsty-Ink

Version: 001.000

Font Suitcase File: Kirsty-Ink.bmap

Font Outline File: KirstInk

Copyright \(\c\) Ray Larabie, 2000. All rights reserved. Freeware. Dedicated to the late Kirsty MacColl.

ABCDEFGHIJKLMNOPQRSTUVWXYZ

ABCDEFGHIJKLMNOPQRSTUVWXYZ

1234567890 \$%&(.,:;N°!?)

WHILE THE BASIC SHAPES OF LETTERS HAVE NOT CHANGED MUCH IN HUNDREDS OF YEARS, THERE HAVE BEEN THOUSANDS OF VARIATIONS ON THE THEME. THERE ARE SPECIAL TYPES FOR TELEPHONE BOOKS, NEWSPAPERS AND MAGAZINES, AND FOR THE EXCLUSIVE USE OF CORPORATIONS. SOME TYPEFACES HAVE A LEISURELY LOOK ABOUT THEM WHILE CONFORMING TO EVERYDAY TYPOGRAPHIC EXPECTATIONS. OTHERS WERE BORN WITH UNUSUAL, YET

8 **SPHINX OF BLACK QUARTZ JUDGE MY VOW.**

10 **SPHINX OF BLACK QUARTZ JUDGE MY VOW.**

12 **SPHINX OF BLACK QUARTZ JUDGE MY VOW.**

14 **SPHINX OF BLACK QUARTZ JUDGE MY VOW.**

18 **SPHINX OF BLACK QUARTZ JUDGE MY VOW.**

24 **SPHINX OF BLACK QUARTZ JUDGE MY VOW.**

30 **SPHINX OF BLACK QUARTZ JUDGE MY VOW.**

36 **SPHINX OF BLACK QUARTZ JUDGE MY V**

48 **SPHINX OF BLACK QUARTZ J**

60 **SPHINX OF BLACK QUA**

72 **SPHINX OF BLACK**

Kleptocracy

Technology: PostScript Single Master
PostScript Name: Kleptocracy
Version: 001.000
Font Suitcase File: Kleptocracy.bmap
Font Outline File: Klept
\\(C\) 1999 Ray Larabie - rlarabie@hotmail.com

abcdefghijklmnopqrstuvwxyz
ABCDEFGHIJKLMNOPQRSTUVWXYZ
1234567890 \$% (, ; : # ! ?)

While the basic shapes of letters have not changed much in hundreds of years, there have been thousands of variations on the theme. There are special types for telephone books, newspapers and magazines, and for the exclusive use of corporations. Some typefaces have a leisurely look about them while conforming to everyday typographic expectations. Others were born with unusual, yet casual, shapes and make the best of it.

8 Sphinx of black quartz judge my vow.
10 Sphinx of black quartz judge my vow.
12 Sphinx of black quartz judge my vow.
14 Sphinx of black quartz judge my vow.
18 Sphinx of black quartz judge my vow.
24 Sphinx of black quartz judge my vow.
30 Sphinx of black quartz judge my vow.
36 Sphinx of black quartz judge my vow.
48 Sphinx of black quartz judge my vow.
60 Sphinx of black quartz judge
72 Sphinx of black quartz ju

Knuckle Down

Technology: PostScript Single Master
PostScript Name: KnuckleDown
Version: 001.000
Font Suitcase File: Knuckle Down.bmap
Font Outline File: KnuckDow
(C) 1999 Ray Larabie - rlarabie@hotmail.com

a b c d e f g h i j k l m n o p q r s t u v w x
ä å æ ç è é ê ë ì í î ï ð ñ ò ó ô õ ö × ø ù
ı 2 3 4 5 6 7 8 9 0 \$ % & (. , : ; # ! ?)

while the basic shapes of letters have not changed much in hundreds of years, there have been thousands of variations on the theme. there are special types for telephone books, newspapers and magazines, and for the exclusive use of corporations. some typefaces have a leisurely look about them while conforming to

8 **sphinx or black quart~ judce my vow.**
10 **sphinx or black quart~ judce my vow.**
12 **sphinx or black quart~ judce my vow.**
14 **sphinx or black quart~ judce my vow.**
18 **sphinx or black quart~ judce my vow.**
24 **sphinx or black quart~ judce my vow.**
30 **sphinx or black quart~ judce m**
36 **sphinx or black quart~ ju**

Kredit

Technology: PostScript Single Master
PostScript Name: Kredit
Version: 001.000
Font Suitcase File: Kredit.bmap
Font Outline File: Kredi
Freeware typeface by Ray Larabie 1996 - distribute freely.

A B C D E F G H I J K L M N O P Q R S T U V W X Y Z

A B C D E F G H I J K L M N O P Q R S T U V W X Y Z

1 2 3 4 5 6 7 8 9 0 \$ % & (. , ; : # ! ?)

WHILE THE BASIC SHAPES OF LETTERS HAVE NOT CHANGED MUCH
IN HUNDREDS OF YEARS, THERE HAVE BEEN THOUSANDS OF
VARIATIONS ON THE THEME. THERE ARE SPECIAL TYPES FOR
TELEPHONE BOOKS, NEWSPAPERS AND MAGAZINES, AND FOR THE
EXCLUSIVE USE OF CORPORATIONS. SOME TYPEFACES HAVE A
LEISURELY LOOK ABOUT THEM WHILE CONFORMING TO EVERYDAY

8 SPHINX OF BLACK QUARTZ JUDGE MY VOW.

10 SPHINX OF BLACK QUARTZ JUDGE MY VOW.

12 SPHINX OF BLACK QUARTZ JUDGE MY VOW.

14 SPHINX OF BLACK QUARTZ JUDGE MY VOW.

18 SPHINX OF BLACK QUARTZ JUDGE MY VOW.

24 SPHINX OF BLACK QUARTZ JUDGE MY VOW.

30 SPHINX OF BLACK QUARTZ JUDGE MY

36 SPHINX OF BLACK QUARTZ JUDGE

48 SPHINX OF BLACK QUAR

60 SPHINX OF BLACK

72 SPHINX OF BLA

Kustom Kar

Technology: PostScript Single Master

PostScript Name: KustomKar

Version: 001.000

Font Suitcase File: Kustom Kar.bmap

Font Outline File: KustoKar

\\(C)1999 Ray Larabie - rlarabie@hotmail.com

A B C D E F G H I J K L M N O P
A B C D E F G H I J K L M N O P
1 2 3 4 5 6 7 8 9 0 \$ % & (, . : ; # ! ?

WHILE THE BASIC SHAPES OF LETTERS HAVE
NOT CHANGED MUCH IN HUNDREDS OF
YEARS, THERE HAVE BEEN THOUSANDS OF
VARIATIONS ON THE THEME. THERE ARE
SPECIAL TYPES FOR TELEPHONE BOOKS,
NEWSPAPERS AND MAGAZINES, AND FOR

8 SPHINX OF BLACK QUARTZ JUDGE MY VOW.

10 SPHINX OF BLACK QUARTZ JUDGE MY VOW.

12 SPHINX OF BLACK QUARTZ JUDGE MY VOW.

14 SPHINX OF BLACK QUARTZ JUDGE MY VOW.

18 SPHINX OF BLACK QUARTZ JUDGE MY VO

24 SPHINX OF BLACK QUARTZ JUD

30 SPHINX OF BLACK QUART

36 SPHINX OF BLACK QU

48 SPHINX OF BLA

60 SPHINX OF B

72 SPHINX OF
