

LogotypeMaker

LogotypeMaker by Blue Line Studios

Copyright ©2000-2001 Blue Line Studios. All rights reserved.

Software programming, interface design, manual written by Daniel C. Kueng.

External code portions courtesy of Mark Lucas.

Edition April, 2001

This manual and the software described are copyrighted with all rights reserved. The manual may not be distributed, sold, or rented to any other person than the owner of the license, wether in whole or part, without prior written consent of Blue Line Studios. Mentioned product and company names may be registered trademarks. Use of the software described is at the user's sole risk.

Blue Line Studios

CH 4000 Basel/Switzerland

Web: <http://www.blueline-studios.com>

E-mail: studio@blueline-studios.com

INTRODUCTION

What this application is for

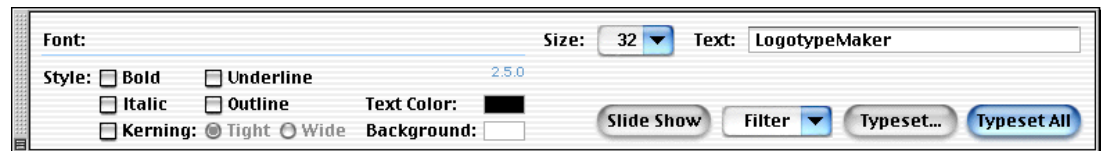
LogotypeMaker displays a string of text using all your currently installed fonts—one font face per line—with just a single click.

LogotypeMaker's main function is the typesetting of a text string using all your activated fonts. The application's purpose is to help graphics professionals choosing an appropriate typeface in the early stages of creating logotypes.

GETTING STARTED

The controls palette

When you launch LogotypeMaker, you will be presented with the controls palette. Here you can set all the text attributes like *bold*, *underline*, *text color*, etc. If the fonts list window is not currently open, selecting any of the checkboxes or choosing a font size from the popup button will have no immediate effect.



On top left is the fonts field, displaying the font's name for each line in the fonts pane while the pointer is over it.

Buttons:

Typeset All: all your currently active fonts will be listed in the left pane, as shown on next page. LogotypeMaker is unable to display fonts that are not currently active.

Note: Depending on the number of currently active fonts, displaying all fonts will take from a few seconds up to several minutes. For technical reasons, the progress bar will move in steps, and the cursor will **not always** spin. **This does not necessarily mean the app has frozen.**

Typeset...: typesets only the fonts you select. (See Chapter “Functions; Typeset”)

Filter...: defines the criteria the fonts should meet. (See “Chapter Functions; Filter”)

Slide Show: shows your fonts frame by frame in a new window. (See “Chapter Functions, Slide Show”)

Style:

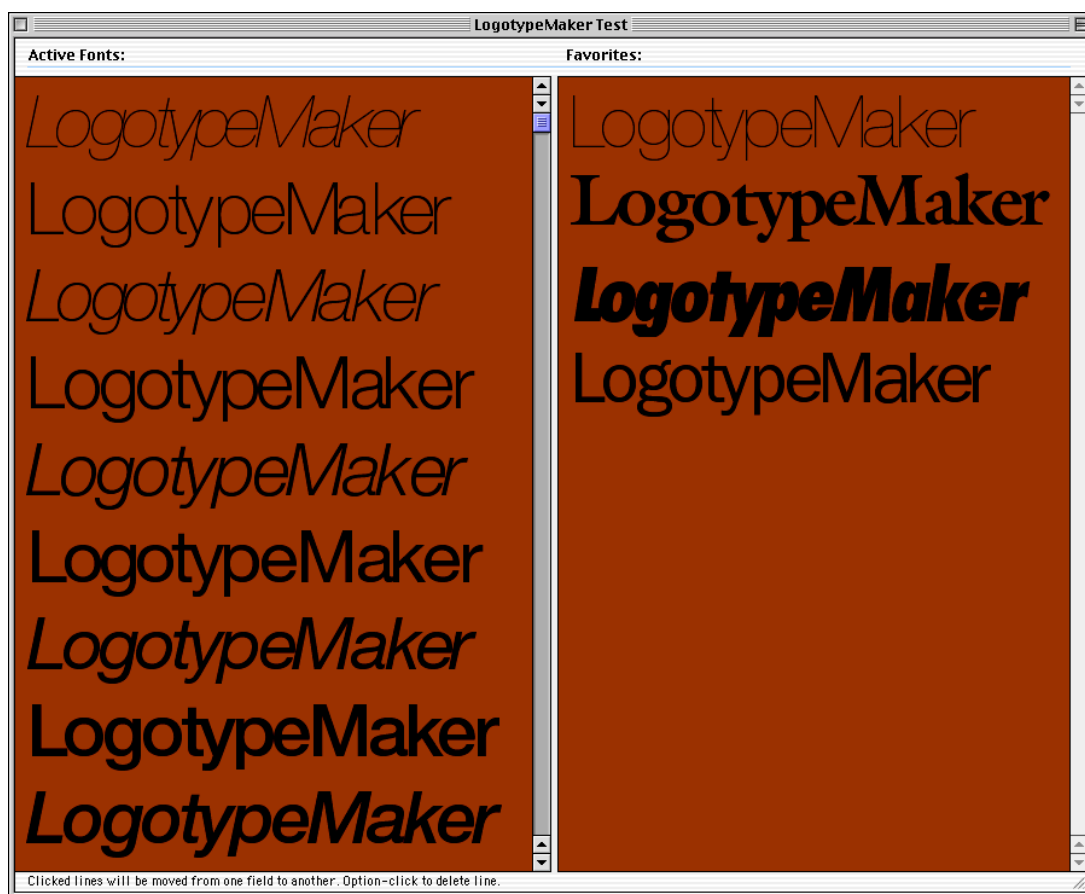
Set the text attributes like bold, italic, etc, as well as the text and background colors. Note that *Bold*, *Underline*, *Italic*, and *Outline* sets the styles **electronically**; you will probably not be able to print or otherwise output the fonts the way they look on-screen.

The fonts list window

In the left pane, **all** currently active fonts will be listed.

- To move a line from one field to another, just click the appropriate line. The purpose of this is to create a collection of favorite typefaces.
- To delete a line, click the line while holding down the *Option*-key.
- While the pointer is over a line, the font name will show in the controls palette.

Note: Depending on the number of listed fonts, the scroll bar will have a noticeable delay before responding.



FUNCTIONS

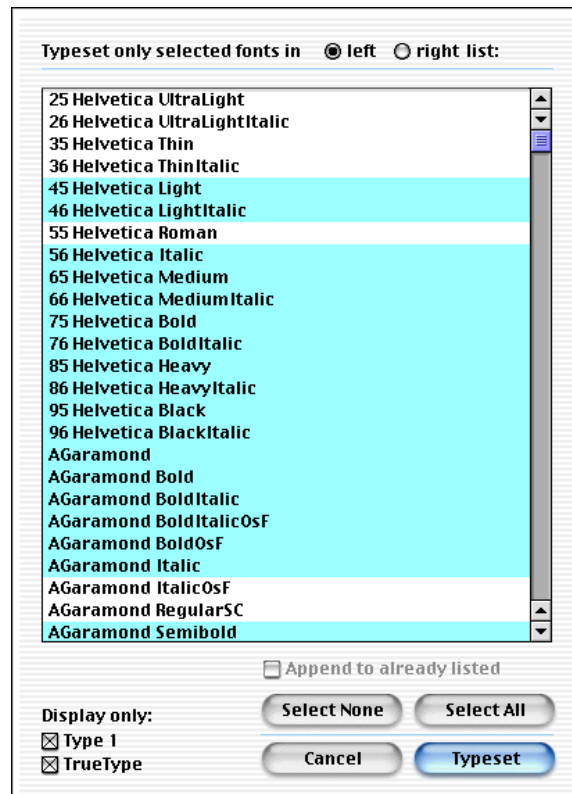
Typesetting...

Button *Typeset...* on the controls palette: you will be presented with shown dialog; only the fonts you select from the list of active fonts will be typeset.

Button *Append to already listed*: the hilited fonts will be appended to the already existing list.

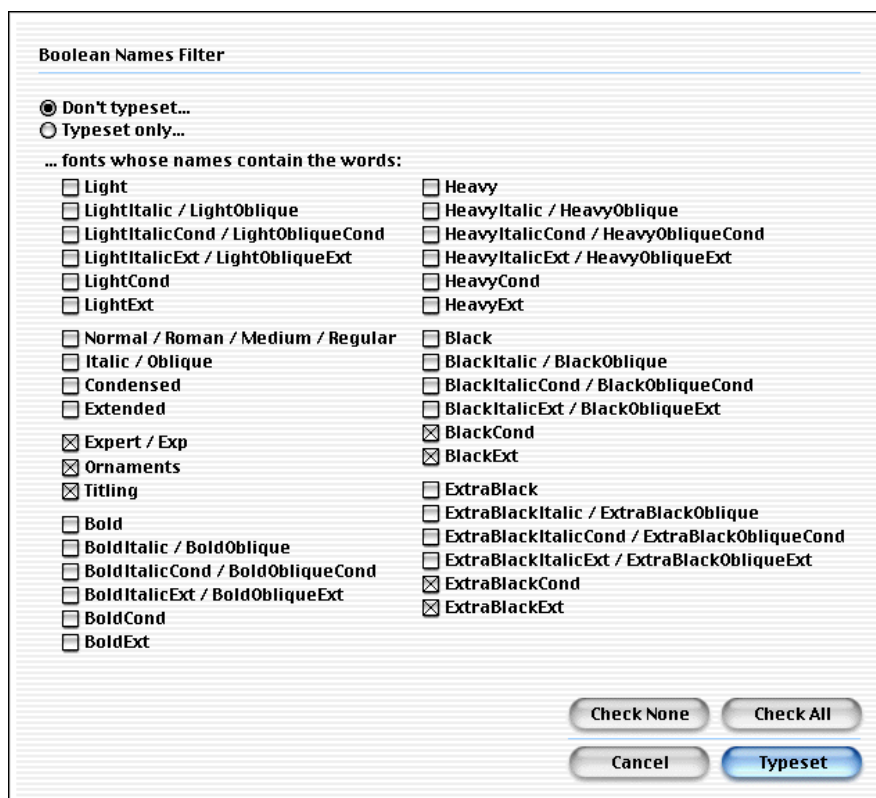
Button *Type 1*: Only fonts of type 1 (PostScript Fonts) will be displayed in this dialog.

Button *TrueType*: Only fonts of type TrueType will be displayed in this dialog



Filters...

Button *Filter...* on the controls palette: if no fonts list is currently open, you will be presented with shown dialog; define the criteria that the fonts should meet. Say, you know beforehand that light condensed typefaces are out of the question, select *Don't typeset...* plus the appropriate checkboxes.



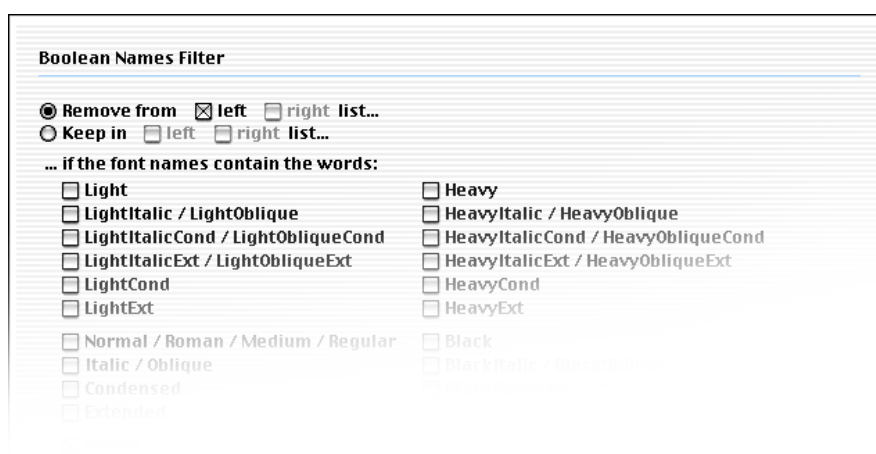
Boolean Names Filter

☒ Don't typeset...
☐ Typeset only...

... fonts whose names contain the words:

<input type="checkbox"/> Light	<input type="checkbox"/> Heavy
<input type="checkbox"/> LightItalic / LightOblique	<input type="checkbox"/> HeavyItalic / HeavyOblique
<input type="checkbox"/> LightItalicCond / LightObliqueCond	<input type="checkbox"/> HeavyItalicCond / HeavyObliqueCond
<input type="checkbox"/> LightItalicExt / LightObliqueExt	<input type="checkbox"/> HeavyItalicExt / HeavyObliqueExt
<input type="checkbox"/> LightCond	<input type="checkbox"/> HeavyCond
<input type="checkbox"/> LightExt	<input type="checkbox"/> HeavyExt
<input type="checkbox"/> Normal / Roman / Medium / Regular	<input type="checkbox"/> Black
<input type="checkbox"/> Italic / Oblique	<input type="checkbox"/> BlackItalic / BlackOblique
<input type="checkbox"/> Condensed	<input type="checkbox"/> BlackItalicCond / BlackObliqueCond
<input type="checkbox"/> Extended	<input type="checkbox"/> BlackItalicExt / BlackObliqueExt
<input checked="" type="checkbox"/> Expert / Exp	<input checked="" type="checkbox"/> BlackCond
<input checked="" type="checkbox"/> Ornaments	<input checked="" type="checkbox"/> BlackExt
<input checked="" type="checkbox"/> Titling	<input type="checkbox"/> ExtraBlack
<input type="checkbox"/> Bold	<input type="checkbox"/> ExtraBlackItalic / ExtraBlackOblique
<input type="checkbox"/> BoldItalic / BoldOblique	<input type="checkbox"/> ExtraBlackItalicCond / ExtraBlackObliqueCond
<input type="checkbox"/> BoldItalicCond / BoldObliqueCond	<input type="checkbox"/> ExtraBlackItalicExt / ExtraBlackObliqueExt
<input type="checkbox"/> BoldItalicExt / BoldObliqueExt	<input checked="" type="checkbox"/> ExtraBlackCond
<input type="checkbox"/> BoldCond	<input checked="" type="checkbox"/> ExtraBlackExt
<input type="checkbox"/> BoldExt	

If a fonts list is currently open, the dialog will look slightly different; the already displayed typefaces in the fonts list will then be filtered according to your definitions.



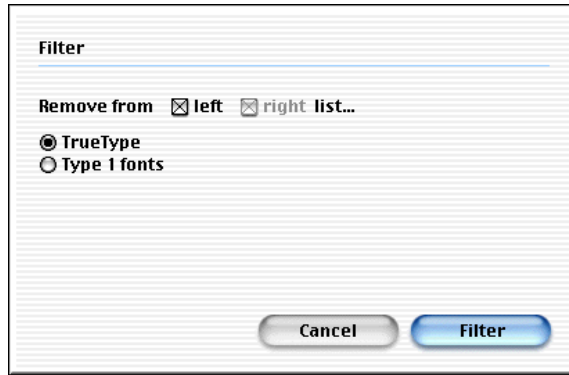
Boolean Names Filter

☒ Remove from ☒ left ☐ right list...
☐ Keep in ☐ left ☐ right list...

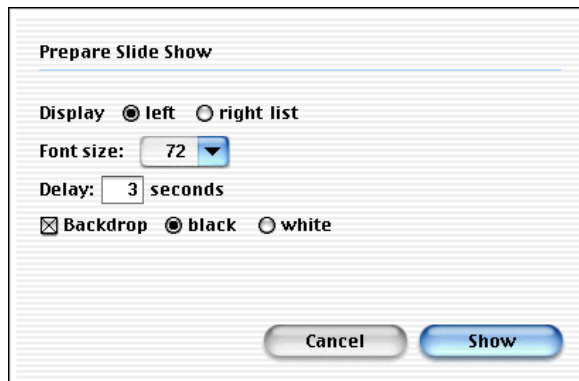
... if the font names contain the words:

<input type="checkbox"/> Light	<input type="checkbox"/> Heavy
<input type="checkbox"/> LightItalic / LightOblique	<input type="checkbox"/> HeavyItalic / HeavyOblique
<input type="checkbox"/> LightItalicCond / LightObliqueCond	<input type="checkbox"/> HeavyItalicCond / HeavyObliqueCond
<input type="checkbox"/> LightItalicExt / LightObliqueExt	<input type="checkbox"/> HeavyItalicExt / HeavyObliqueExt
<input type="checkbox"/> LightCond	<input type="checkbox"/> HeavyCond
<input type="checkbox"/> LightExt	<input type="checkbox"/> HeavyExt
<input type="checkbox"/> Normal / Roman / Medium / Regular	<input type="checkbox"/> Black
<input type="checkbox"/> Italic / Oblique	<input type="checkbox"/> BlackItalic / BlackOblique
<input type="checkbox"/> Condensed	<input type="checkbox"/> BlackItalicCond / BlackObliqueCond
<input type="checkbox"/> Extended	<input type="checkbox"/> BlackItalicExt / BlackObliqueExt

Button *TrueType*: fonts of type TrueType will be removed from the checked list(s).
Button *Type 1*: fonts of type 1 (PostScript fonts) will be removed from the checked list(s).



Slide Show



The button *Slide Show* on the controls palette displays your fonts frame by frame in a new window, each frame showing a single line. A new dialog ask you to prepare the slide show.

Display: Displays lefthand or righthand pane.

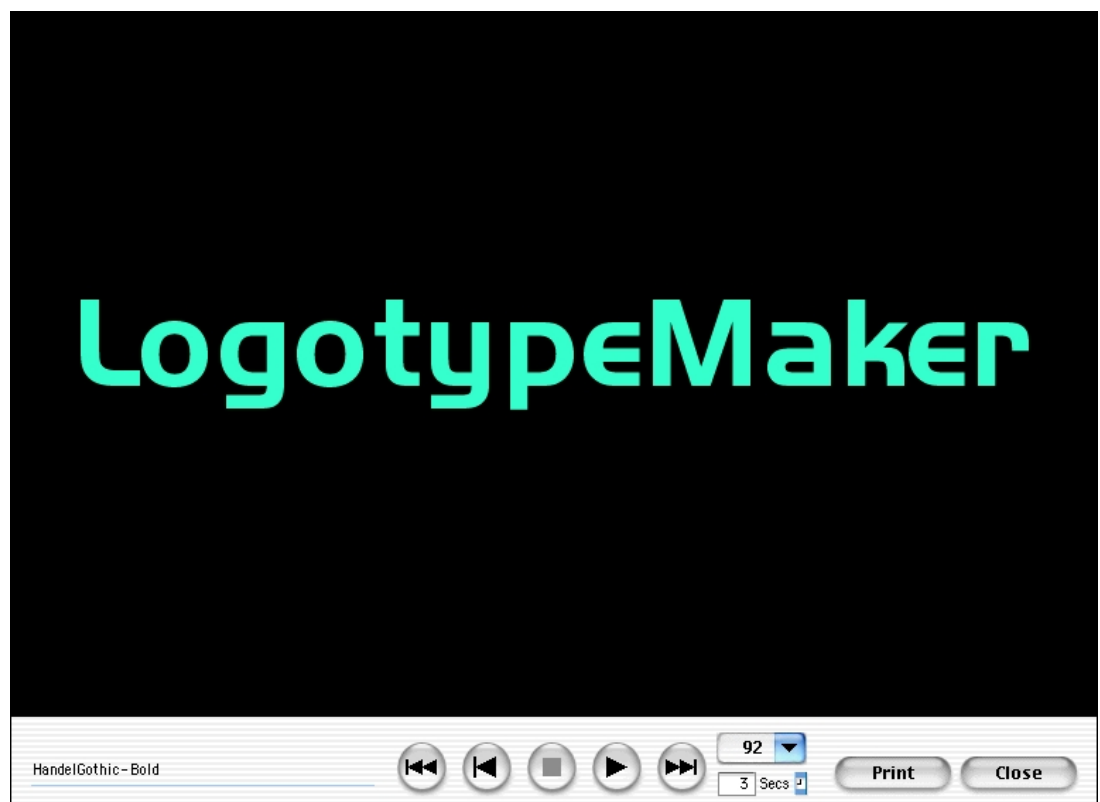
Delay: Show each line of text for a specified number of seconds.

Backdrop: covers the background with either black or white.

The Slide Show pane displays the font name. Buttons from left to right:

1. Goes to the first font in the list.
2. Steps back one frame.
3. Stops the slide show.
4. Plays automatically if clicked once. Repeatedly clicking advances to the next frame.
5. Goes to the last font in the list.
6. Sets the text size in Points.
7. Sets the duration of each frame.
8. Prints the window (without the controllers).
9. Closes the window and returns to the fonts list and the controls palette.

You can set a different text size as well as a different duration while the show is running.



INTERFACE

Menus

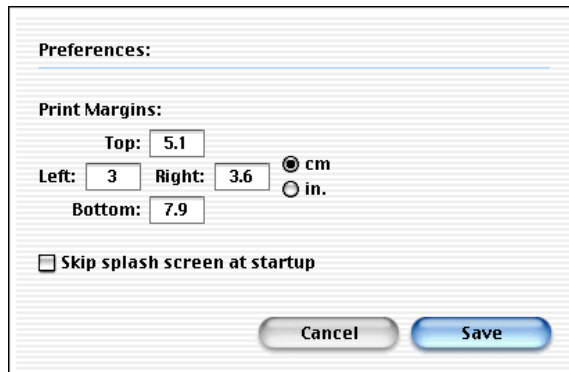
Most of the menu commands correspond with the buttons on the controls palette. Here are the ones that do not:

File: Append...: Appends another LogotypeMaker file with the currently open file. The fonts lists found in the second file are appended **at the end** of the currently displayed lists.

Presentation: Put Alphabet into Text Field: Puts the alphabet into the field where you type your text.

Preferences

Menu *Edit: Preferences...* takes you to the preferences screen. Her you can set the print margins and turn off the splash screen.



WHERE TO GO FROM HERE

Exporting

Mostly you will want to refine or modify the logotype anyway in a vector-oriented drawing program such as Illustrator or FreeHand.

The following output methods are available:

■ Simpletext: choose menu *File:Export:To SimpleText*. The resulting file can be opened with SimpleText.

■ Rich Text Format: choose menu *File:Export:To Rich Text Format*. The resulting file can be opened with a word editor that supports RTE, for example Microsoft Word.

■ PostScript: output PostScript code via the *Print...* command in conjunction with the full version of Adobe Acrobat.

1. Open the Chooser and select the AdobePS printer driver. Close Chooser.
2. Select menu *File: Page Setup...* and make the correct settings.
3. Select *Print...* and save the file to disk instead of spooling it to the printer.
4. Launch Distiller (part of the Acrobat software package) and process the postscript file. Distiller will create a PDF (Portable Document Format) from it.
5. Open the resulting PDF with Adobe Illustrator or any drawing program which can import PDFs.

TROUBLESHOOTING

If the app doesn't work as expected

LogotypeMaker has been tested exhaustively and thoroughly. Should you nevertheless experience a problem of any sort, please make sure you follow the guidelines below.

Known problems:

1. An ungrateful task

Handling lots of fonts is a somewhat ungrateful task, as fonts are prone to file corruption and broken links to their outline files. LogotypeMaker will neither detect, repair, or otherwise help you organize your fonts. There are other tools available that do this. Most problems you might encounter are related to the fonts LogotypeMaker tries to display.

2. Ascent/descent inconsistencies

If the leading of the displaying fonts varies; these are font-specific problems.

3. Crash/freeze while loading the fonts list

This is mostly due to a damaged font. Run a font repair utility or re-install your fonts. Also, check your hard disk for corruption problems with a tool such as Disk First Aid, TechTool Pro, or Norton Disk Doctor.

1. Please check this list:

- Did the crash, freeze, or unexpected behaviour only happen once or does it happen everytime?

If it happens everytime, please write down the exact steps that lead to the error.

- Did you restart your computer and try again?

Sometimes a restart performs wonders.

- Did you recently install any new extensions used by the operating system?

Sometimes extensions can cause problems. Please turn off the extension and try again.

- Did you trash LogotypeMaker and use a fresh backup copy?

2. If the problem persists, please take a look at our online support page at

<http://www.blueline-studios.com/lmSupport.html>

3. If you still can't find the solution of the specific problem, please contact Blue Line Studios' support department at [<support@blueline-studios.com>](mailto:support@blueline-studios.com). We will need an exact reproducible description of how the error occurred. Only then will we be able to track down and fix any possible flaws or bugs.