

MACINTOSH & WINDOWS

Photo CD Acquire Module 3.0



Another electronic document on Kodak Digital Science products.

Welcome

To use this document, click on the Bookmarks listed on the left of this page. Or thumb through the document using the arrow keys.

You can print this document from your reader.

Copyright © 1995 Eastman Kodak Company. All Rights Reserved.

Product Overview

Welcome to another electronic document by the Kodak Color Management Systems group, where the science of color works for you.

This document:

- ◆ **Describes the Kodak Digital Science Photo CD Acquire Module v3.0**
- ◆ **Outlines the recommended workflow**
- ◆ **Tells you how to access the software and select images**
- ◆ **Describes how to customize the acquisition of Photo CD images and import them into Photoshop**
- ◆ **Explains how to set preferences and get information**
- ◆ **Discusses the differences between the 2.x and 3.0 versions**

Major differences between Windows and Macintosh computers are noted. Otherwise, the screen displays shown are for the Macintosh computer.

Product Overview

What is the Photo CD Acquire Module v3.0?

The Photo CD Acquire Module v3.0 is a plug-in to Adobe Photoshop that lets you select, customize, and import Photo CD images into Photoshop.

The customizing options let you:

- ◆ Specify the output size, resolution and orientation
- ◆ Crop the image
- ◆ Apply enhancements such as sharpening and effects
- ◆ Choose the source and destination color spaces

In addition, you can preview the image to see the effect of your customizing selections before you import.

Product Overview

Color Correcting Imported Images

To color correct images, the Photo CD Acquire Module v3.0 includes the Kodak Precision Color Management System (CMS). This tool reproduces color accurately and consistently throughout your desktop. The Kodak CMS, which can be installed with Photoshop, maintains the color characteristics of the original image.

Color profiles called Precision Transforms (PTs) are included in the Adobe Photoshop installation. The Photo CD Acquire Module v3.0 also includes some PTs for effects (photographic-like results) and display. Additional output PTs are available through Kodak. Each profile models a particular device, color space, and setting to compensate for color shifts inherent to the device's color delivery.

Product Overview

The Photo CD Acquire Module v3.0 uses three types of PTs: source, monitor, and destination. A source PT color manages information from the source device – the device from which the image originates. The only source device the Photo CD Acquire Module v3.0 uses is a Photo CD disc.

A destination PT color manages information for the destination device, which receives the image. A monitor is a destination device when it displays the acquired image; a printer is a destination device when the image is printed.

Product Overview

What is a Typical Workflow?

A typical workflow using the Photo CD Acquire Module v3.0 involves the following major steps:

- 1 Start a Photoshop session.
- 2 Access the Photo CD Acquire Module v3.0.
- 3 Select the Photo CD image you want.
- 4 Customize the acquisition of the image.
- 5 Preview the image to see the results of your customizing selections (optional).
- 6 Import the image into Photoshop.

In actual use of the product, each of the above steps is made up of multiple steps. This is only a summary.

Accessing Acquire 3.0

Accessing the Photo CD Acquire Module v3.0

To access the Photo CD Acquire Module v3.0:

- 1 Start a Photoshop session.
- 2 Choose **File → Acquire → Kodak Photo CD v3.0**.

The File Selection dialog box appears, as shown on the right.



Selecting an Image to Import

You can select an image from either the list box or the overview file (overview .pcd). If you select the overview file, a dialog box displays thumbnails of the images through which you can scroll and make a selection.

Any image you select may be either:

- Encrypted – you must provide a password to be able to access the image.
- Encrypted and watermarked – you must provide a password to be able to access the image. In addition, a translucent mark (a watermark) appears over some versions of the image. The watermark indicates that you must contact the publisher of the CD to use those versions of the image.

If the Base resolution version (768 x 512 pixels) is watermarked, every higher resolution version of the image is automatically watermarked. If you don't know the access password, you can still acquire the image, but it will have a watermark.

Selecting an Image to Import

Keep in mind the following:

- If a .pcd file has been copied from the original Photo CD disc to some magnetic media, the Acquire module can neither detect whether the image is encrypted, nor decrypt it.
- If an image is encrypted but is not watermarked, you must provide the password. Otherwise, the Photo CD Acquire Module v3.0 won't allow access to any resolution that is encrypted and not watermarked.

The Photo CD Acquire Module v3.0 tracks the last 24 entered passwords. If the image you select is encrypted and the password has been stored, the Encryption dialog box isn't displayed, and you go directly to the Main dialog box.

Selecting an Image to Import

Selecting an Image from the List Box

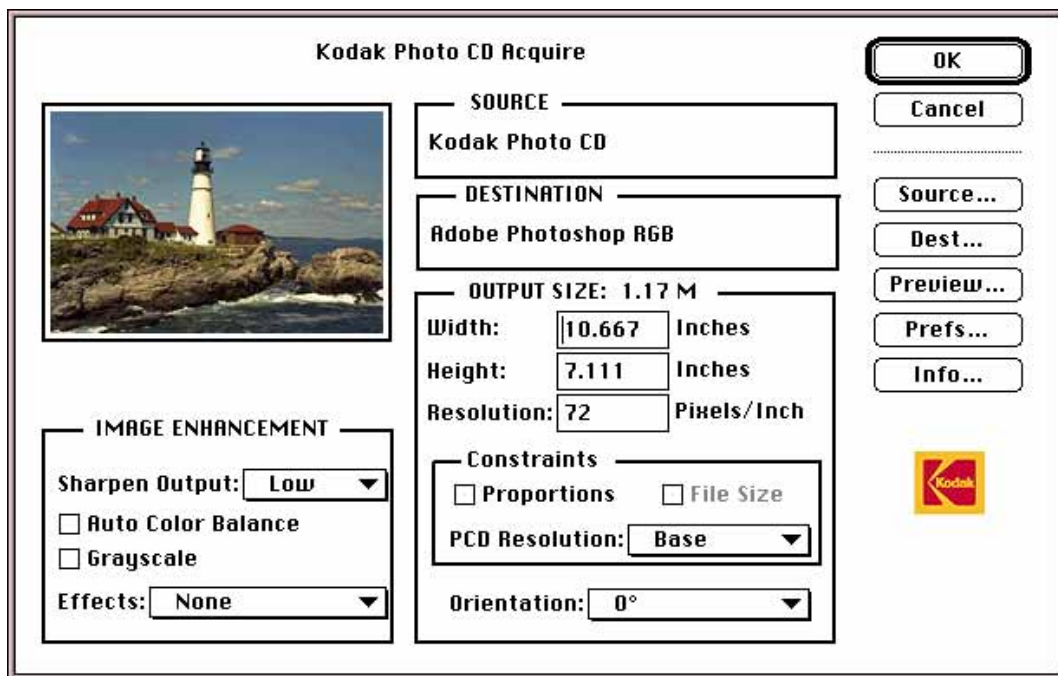
If you know the name of the image you want to import, you can use the list box to find and select it quickly.

To select an image from the list box:

- 1 To be able to view a thumbnail of the image you select, turn on the **Show Thumbnail** check box.
- 2 Scroll through the names in the list box of the File Selection dialog box and double-click the name of the image you want.

Selecting an Image to Import

If the image isn't encrypted, the Main dialog box appears with a thumbnail of the image selected.



Selecting an Image to Import

If the image is encrypted, the Encryption dialog box appears and you are prompted for the password:

This photo is encrypted.


Disc ID: PCD0710

Image Name: IMG0004.PCD

Image ID: KODAK_P1W-7235-b3f9-2f4b-eb6a

Please contact the publisher of this disc for an access password and enter it below. To continue without a password, select "Ignore."

Password:



Selecting an Image to Import

3 Do one of the following:

- If you know the access password, type it and click **Unlock**.
The Main dialog box appears, displaying a thumbnail of the selected image.
- If you don't know the access password, but you want to access a watermarked version of the image, click **Ignore**.
The Main dialog box appears, displaying a watermarked thumbnail of the selected image.
- To cancel, click the **Cancel** button.
You exit from the Photo CD Acquire Module v3.0.

Selecting an Image to Import

Selecting from the Overview File

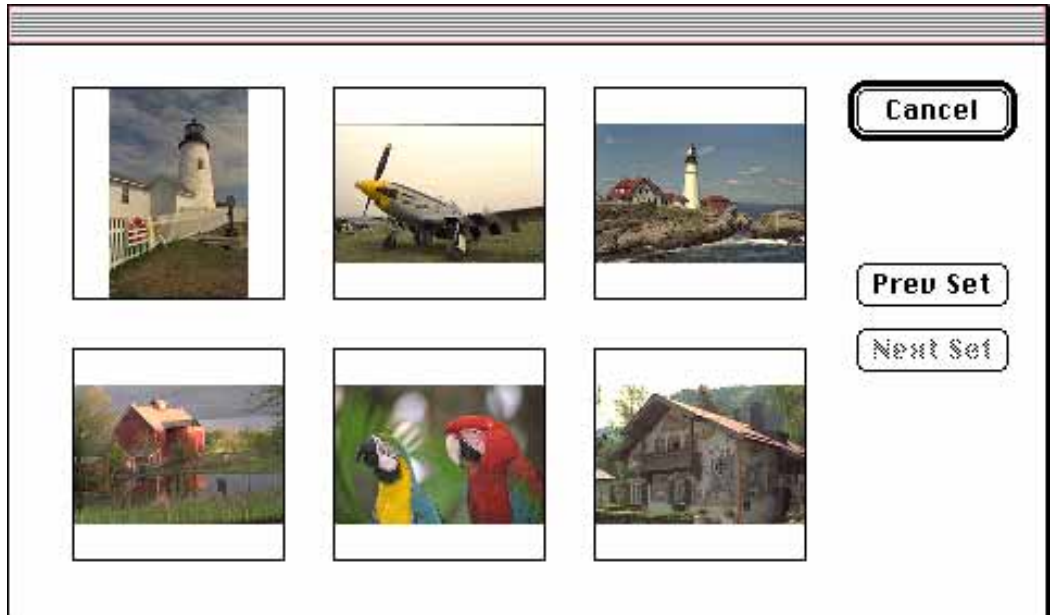
You can access the overview file, which displays up to six thumbnails per screen, and select an image from there. Using the overview file is helpful if you want to browse through the available images, or if you know an image by its content but not by its name.

Whether a CD has an overview file depends on the vendor that provided the disc. If an overview file is present, its name is **overview.pcd**, and it is located in the top directory level.

Selecting an Image to Import

To select an image from the overview file:

- 1 From the list box, double-click the overview file.
The Overview dialog box appears:



Selecting an Image to Import

- 2 Using **Next Set** and **Prev Set** to scroll to the next or previous group, move through the images and click the one you want.

If the image you select is neither encrypted nor unlocked, the Main dialog box appears, displaying a thumbnail of the selected image.

To cancel, click the **Cancel** button. You exit from the Photo CD Acquire Module v3.0.

Selecting an Image to Import

If the image is encrypted and locked, the Encryption dialog box appears and you are prompted for the password:

This photo is encrypted.


Disc ID: PCD0710

Image Name: IMG0004.PCD

Image ID: KODAK_P1W-7235-b3f9-2f4b-eb6a

Please contact the publisher of this disc for an access password and enter it below. To continue without a password, select "Ignore."

Password:



Selecting an Image to Import

3 Do one of the following:

- If you know the access password, type it and click Unlock.

The Main dialog box appears, displaying a thumbnail of the selected image.

- If you don't know the access password, but you want to access a watermarked version of the image, click Ignore.

The Main dialog box appears, displaying a watermarked thumbnail of the selected image. At this point, access to any non-watermarked versions of the image is prevented.

- To cancel, click the Cancel button.

You exit from the Photo CD Acquire Module v3.0.

If You Have Multiple Monitor PTs

The Photo CD Acquire Module v3.0 is shipped with a default monitor PT. You may have other monitor PTs installed on your computer, and the default monitor PT may not be appropriate for your setup.

If you have other monitor PTs, the first time you run the Photo CD Acquire v3.0 software, you need to select the monitor PT that is appropriate for your system. For details, see the section in this document called "Specifying the Monitor PT."

Using the Photo CD Acquire Module

The following sections describe how to customize the acquisition of Photo CD images, set preferences, import images, and get information during a work session. These sections also discuss the differences between the 2.x and 3.0 versions of the Photo CD Acquire Module.

Customizing an Image

Customizing the Acquisition of the Selected Image

After you select an image, you can customize its acquisition by:

- ◆ **Specifying the source and destination PTs**
- ◆ **Specifying output size, resolution, and orientation**
- ◆ **Applying enhancements such as sharpening, automatic color balancing, effects, and converting to grayscale**
- ◆ **Cropping**

In the following sections, you'll learn how to customize the acquisition of the selected image.

Specifying PTs

Specifying the Source PT and Destination PT

You select the source and destination PTs to tell the Photo CD Acquire Module v3.0 the color spaces to use for the image.

Specifying the Source PT

The source PT color manages information from the source device, which is the device on which the image originates. The Photo CD Acquire Module v3.0 uses only one source device: a Photo CD disc.

Specifying PTs

The other choices for the source device are:

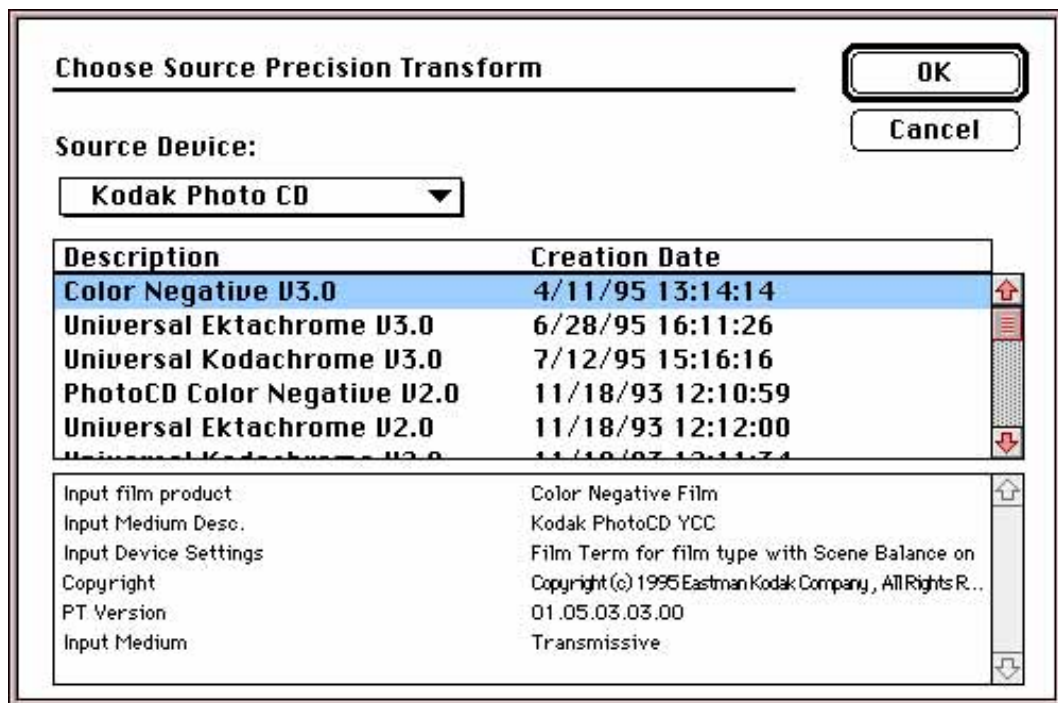
- **Default Conversion** – This option provides backward compatibility with the Photo CD Acquire Module v2.2. Use this option to perform a default color conversion from Photo CD YCC color space to RGB. Choosing **Default Conversion** disables the **Dest...** button.
- **YCC Only** – Use this option only if you understand the dynamics of the YCC color space. The Photo CD Acquire Module v3.0 imports the selected image into Photoshop leaving the Photo CD image in its natural color space. Choosing **YCC Only** disables the **Dest...** button.

Specifying PTs

Specifying the Source PT

To specify the source PT:

- 1 From the Main dialog box, click the **Source...** button. The PT selection dialog box appears, as shown on the right.
- 2 Select a PT class from the Source Device pop-up menu.



Specifying PTs

The list of PTs that belong to the class appear below the pop-up menu. The attributes of the selected PT appear below the list of PTs.

3 Select the PT you want.

4 To save your selection and close the PT selection dialog box, click **OK**.

You are returned to the Main dialog box, and your PT selection appears in the **SOURCE** text box.

To discard your selection and close the PT selection dialog box, click **Cancel**.

You are returned to the Main dialog box.

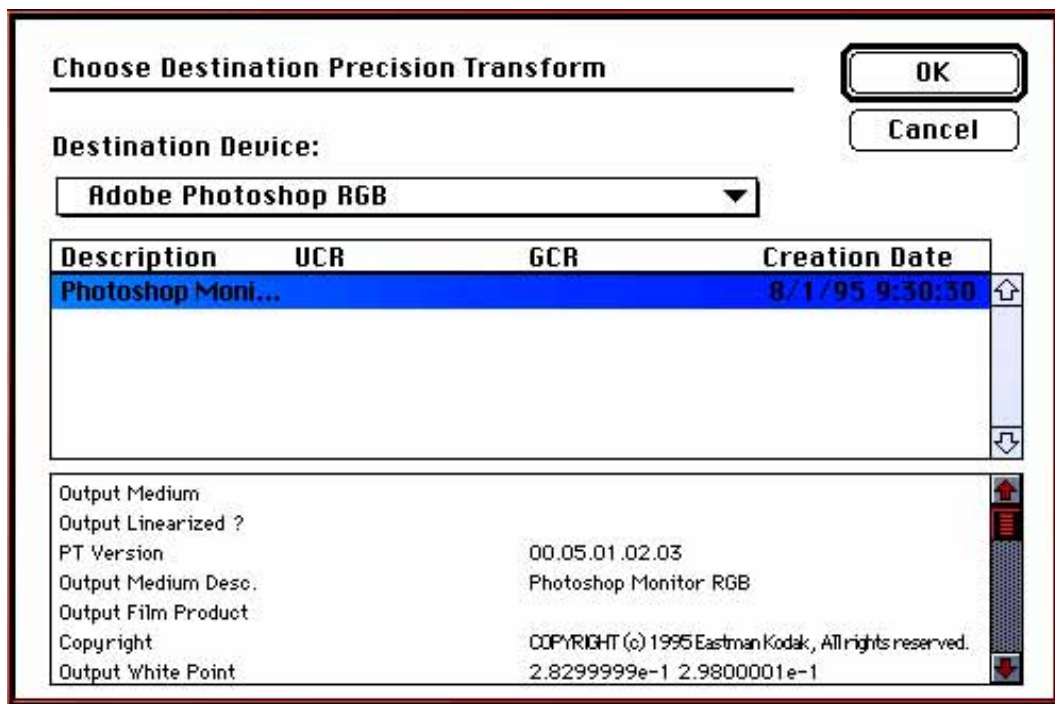
Specifying PTs

Specifying the Destination PT

The destination PT color manages information for the destination device that receives the image.

To specify the destination PT:

- 1 From the Main dialog box, click the **Dest...** button. The PT Selection dialog box appears, as shown on the right.



Specifying PTs

- 2 Select a PT class from the Destination Device pop-up menu.
The list of PTs that belong to the selected class appear below the pop-up menu. The attributes of the selected PT appear below the PT list.
- 3 Select the PT class you want.
- 4 Do either of the following:
 - To save your selection and close the PT selection dialog box, click **OK**.
You are returned to the Main dialog box, and your PT selection appears in the **DESTINATION** text box.
 - To discard your selection and close the PT selection dialog box, click **Cancel**.
You are returned to the Main dialog box.

Specifying PCD Resolution

You can choose from the standard Photo CD resolutions that are provided or allow the Photo CD Acquire Module v3.0 to determine the resolution automatically.

If you choose a standard Photo CD resolution (any option on the PCD Resolution pop-up menu other than **Automatic**), the scaling feature is turned off. This method provides you with the fastest way of acquiring a Photo CD image.

When you select **Automatic**, the Photo CD Acquire Module v3.0 determines the PCD resolution, and the crop box is always proportional. The software uses the image size and crop area to choose the best PCD resolution. If necessary, the image is scaled to meet the specified output size.

Specifying PCD Resolution

To choose the Photo CD resolution, select from the PCD Resolution pop-up menu:

- **Automatic** – the software determines the best PCD resolution
- **Base/64** – 96 x 64 pixels
- **Base/16** – 192 x 128 pixels
- **Base/4** – 384 x 256 pixels
- **Base** – 768 x 512 pixels
- **4 Base** – 1536 x 1024 pixels
- **16 Base** – 3072 x 2048 pixels
- **64 Base** – 6144 x 4096 pixels

Any resolution above Base may not be available because of either encryption or the original disc authoring scheme.

Specifying Output Size

You control the output size of an image by specifying its PCD resolution, width, height, output resolution, and crop area.

- The width and height determine the area and proportions of an image. The width is the horizontal measurement, and the height is the vertical measurement.
- The output resolution, measured in pixels per inch or pixels per centimeter, determines the number of pixels that will be used to represent each inch or centimeter of an image. The resolution affects the amount of detail you can see.

Specifying Output Size

Choosing a Standard PCD Resolution

The following sections describe how to specify width, height, and output resolution, and how to maintain proportions and file size when you choose a standard PCD resolution.

When you choose a standard PCD resolution, as you make changes to either the width, height, or output resolution, the other controls are updated to reflect the changes.

To specify the width and height of an image:

- 1 From the PCD Resolution pop-up menu, select a standard PCD resolution.
- 2 Position the cursor in the **Width** text box and type a value.
- 3 Position the cursor in the **Height** text box and type a value.

Specifying Output Size

To specify the width and height while maintaining the aspect ratio of an image:

- 1 Turn on the **Proportions** check box.
- 2 Type a value in either the **Width** text box or the **Height** text box.
The value for the other dimension is automatically calculated.

To maintain both the aspect ratio and the file size, turn on the **File Size** check box.

To specify the output resolution, move the cursor to the **Resolution** text box and type a value. If you constrain the file size, the **Width** and **Height** are automatically recalculated and redisplayed so they are correct for the new resolution.

Specifying Output Size

Choosing Automatic PCD Resolution

The following sections describe how to specify width, height, and output resolution, and how to maintain proportions and file size when you choose Automatic PCD resolution.

To specify the width and height of an image:

- 1 From the PCD Resolution pop-up menu, select Automatic.
- 2 Position the cursor in the **Width** text box and type a value.
- 3 Position the cursor in the **Height** text box and type a value. The software determines the best PCD resolution.

Specifying Output Size

To maintain the proportions in the Width and Height text boxes:

- 1 Turn on the **Proportional W/H Editing** check box.
- 2 Type a value in either the Width text box or the Height text box. The value for the other dimension is automatically calculated.

To specify output resolution, position the cursor in the Resolution text box and type a value.

Specifying Output Size

Non-Proportional Cropping With Scaling

After you use a standard PCD resolution to crop, you can switch to Automatic to specify the output width or height. This allows you to do a non-proportional crop and scale on the same image.

- 1 From the PCD Resolution pop-up menu, select a standard resolution.
- 2 Crop the image.
- 3 Optionally, check the result of your crop in the Preview window. (For details on using the Preview window, see the section "Previewing an Image.")
- 4 From the PCD Resolution pop-up menu, select **Automatic**.
- 5 Turn on the **Proportional W/H Editing** check box.
- 6 Position the cursor in the **Resolution** text box and type a value.
- 7 Position the cursor in either the **Width** or **Height** text box and type a value.

The value for the other dimension is automatically calculated, and the selected area is resized.

Specifying Output Size

Cropping an Image

Cropping lets you select a portion of the image to import. You crop the thumbnail image from either the Main dialog box or the Preview dialog box.

When the thumbnail image first appears, the entire image is selected and the crop box is not displayed. The crop box, drawn with a dashed outline, appears as you crop.

You can size the width and height of the crop box independently, or you can maintain its aspect ratio. You can also maintain both aspect ratio and file size at the same time.

After you draw the crop box, you can change its shape and size. You can also move the crop box to another location of the image. The cursor shape changes to indicate your selection and type of movement within the crop box.

Specifying Output Size

To crop an image when a standard PCD resolution is selected:

- 1 Place the cursor on a corner of the crop area on the thumbnail.
- 2 Holding down the mouse button, drag to the opposite corner. The crop box is drawn with a dashed outline.
- 3 When the crop box is the size you want, release the mouse button.

To maintain the aspect ratio of the crop box, turn on the **Proportions** check box. Then crop the image as described above.

To change the size of the crop box:

- 1 Select a corner of the crop box.
- 2 Holding down the mouse button, drag until the crop box is the size you want.
- 3 Release the mouse button.

Specifying Output Size

To move the entire crop box:

- 1 Place the cursor anywhere within the crop box.
- 2 Holding down the mouse button, drag the crop box.
- 3 When the crop box is positioned where you want it, release the mouse button.

To maintain both aspect ratio and the file size, turn on the **File Size** check box. Then move the crop box as described above. If you turn on the **File Size** check box, the crop box can be moved but not resized.

Cropping an Image when Automatic PCD Resolution is Selected

If you select **Automatic** from the PCD resolution pop-up menu, the crop box, which determines the area of the image to import, is always proportional.

The width, height, and output resolution determine the output size of the crop area. Scaling is used if necessary to scale the crop area to the specified output size.

Specifying Orientation

The orientation of an image refers to whether it is:

- ◆ **Landscape – wider than it is high**
- ◆ **Portrait – higher than it is wide**

Your selection for orientation takes effect in the Preview window and when the image is imported. The Thumbnail window does not reflect your orientation selection; in the Thumbnail window, the image is always landscape.

Specifying Orientation

The following table lists the orientation options and describes their effect on an image in the Preview window:

O P T I O N	D E S C R I P T I O N
0°	The landscape orientation shown in the Thumbnail window
90° CW	Displays the image 90° clockwise
90° CCW	Displays the image 90° counterclockwise
180°	Displays the image 180° from its current position
Horiz. Flip	Flips the image horizontally
Vert. Flip	Flips the image vertically
90° CCW + VFlip	Displays the image 90° counterclockwise and flips it vertically
90° CCW + HFlip	Displays the image 90° counterclockwise and flips it horizontally

Keep in mind that when you change the orientation of an image from portrait to landscape, the height becomes the width, and the width becomes the height.

Enhancing an Image

You can enhance an image by sharpening, applying automatic color balancing, applying effects, and converting to grayscale.

Sharpening an Image

Sharpening makes an image look crisper. You may want to sharpen an image that looks too soft, and you will always use sharpening when you print.

If you select a sharpening option, it affects only the image display the sharpened image.

To select a sharpening option:

- 1 From the Sharpen Output pop-up menu, select the amount of sharpening you want:
 - None
 - Low
 - Medium
 - High

Enhancing an Image

If you select **Low**, **Medium**, or **High**, the following message appears:



- 2 To close the alert box and return to the Main dialog box, click **OK**.
To disable the sharpening message, turn on the Disable this message check box and then click **OK**.

Enhancing an Image

Applying Auto Color Balance

Use the **Auto Color Balance** option for an image that has an overall tendency toward a single color or, in other words, has a color cast. For example, an image may be too yellow or too green everywhere.

When you apply **Auto Color Balance**, the software finds the lightest portion of the image and assumes it to be white. The color move from that lightest point to white is applied to the whole image to remove the cast.

Enhancing an Image

To apply automatic color balance:

- 1 Turn on the **Auto Color Balance** check box.
The following alert box appears:



Enhancing an Image

- 2 To close the alert box, click **OK**.
To disable the display of this message, turn on the **Disable this message** check box, then click **OK**.
You are returned to the Main dialog box.
- 3 To see the effect of the Auto Color Balance, click the **Preview...** button. The image appears in the Preview window.
- 4 Do either of the following:
 - If you are satisfied with the effect, exit from the Preview window.
 - If you are not satisfied with the effect, exit from the Preview window and turn off the **Auto Color Balance** check box.

Enhancing an Image

Applying Effects

The Effects options give you control over the photographic conditions of the image.

To specify an effect to apply, choose one of the following options from the Effects pop-up menu:

- **None** – no effects are applied.
- **Lighten** – use on a normally exposed image. This option brightens shadows as well as highlights.
- **Lighten More** – use on a low-key, dark image. This option brightens the entire image, with more brightening effect in the shadows.
- **Darken** – use on a high-key, bright image. This option darkens the entire image, with more darkening effect in the highlights.

Enhancing an Image

Converting to Grayscale

When you convert an image to grayscale, the image is transformed from Photo CD color space to a single channel gray scale image when it is imported into Photoshop.

To convert the destination color space to grayscale:

- 1 From the Main dialog box, click the **Dest...** button.
The Destination PT Selection dialog box appears.
- 2 Select **Grayscale** from the pop-up menu.
- 3 To save your change and close the Destination PT Selection dialog box, click **OK**.

You are returned to the Main dialog box. The entry Grayscale appears in the **DESTINATION** text box, and the **Grayscale** check box is turned on.

Another way you can convert an image to grayscale is by turning on the **Grayscale** check box. This selection automatically selects Grayscale as the destination.

If you turn off the **Grayscale** check box, the destination selection returns to the last non-grayscale selection.

Previewing an Image

Previewing an image lets you see the results of the customizing selections you made. You can also crop the image in the Preview dialog box, just as you do in the Main dialog box.

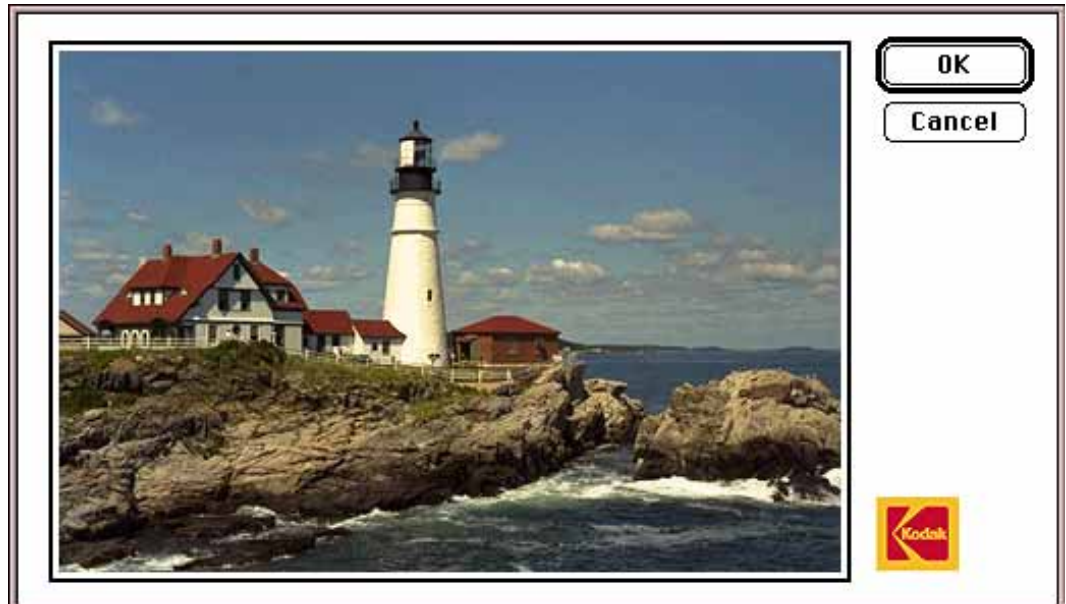
The image displayed in the Preview dialog box has the following characteristics:

- Image size – 384 x 256 pixels.
- Orientation, Auto Color Balance, effects, and color management – performed according to the settings in the Main dialog box.
- Destination PT – the Destination PT specified in the Main dialog box. If the destination PT is an output device, for example, a printer, the Photo CD Acquire Module v3.0 attempts to provide an output simulation of the image.
- Source PT – the Source PT specified in the Main dialog box.
- Crop box – drawn on the image area currently defined.

Previewing an Image

To preview an image:

- 1 Click the **Preview...** button from the Main dialog box.
The following window appears, displaying the image:



Previewing an Image

- 2 Optionally, crop the image.
(For details, see the earlier section “Cropping an image.”)
- 3 To save your cropping and close the Preview window, click **OK**.
To discard your cropping and close the Preview window,
click **Cancel**.
You are returned to the Main dialog box.

Setting Preferences

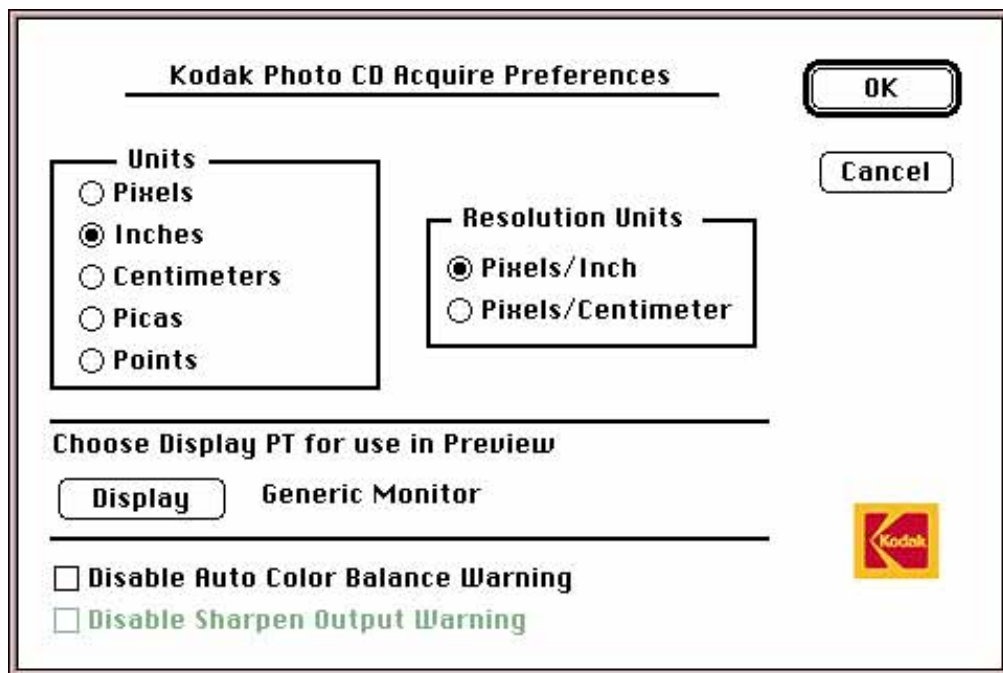
You can set preferences that define:

- The width and height units
- The resolution units
- The display PT to use
- Whether to disable the Auto Color Balance and Sharpen Output warning messages

Any preferences you set will remain in effect until you explicitly change them.

Setting Preferences

To access the Preferences dialog box, shown on the right, click **Preferences** on the Main dialog box.



Setting Preferences

Setting Width and Height Units

You can specify the units for width and height in terms of:

- **Pixels**
- **Inches**
- **Centimeters**
- **Picas**
- **Points**

To select a unit, click its radio button. The width and height values are recalculated and redisplayed with the new units in the Main dialog box.

Setting Preferences

Setting Resolution Units

You can set the resolution units to either:

- Pixels per inch
- Pixels per centimeter

To select a unit, click its radio button. The resolution is recalculated and redisplayed with the new units in the Main dialog box.

Specifying the Monitor PT

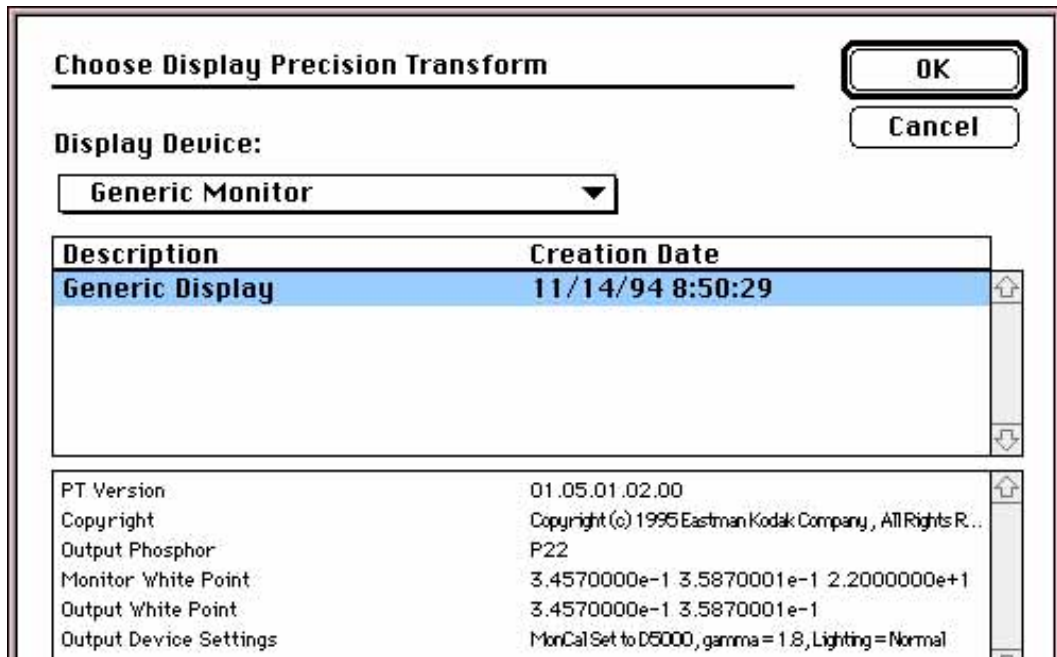
You select a monitor PT so the Photo Cd Acquire Module v3.0 can perform color management on the thumbnail image and the image in the Preview dialog box.

Setting Preferences

To select the monitor PT:

- 1 Click the **Display** button on the Preferences dialog box.

The Display PT Selection dialog box appears:



Setting Preferences

- 2 Select a PT class from the Display Device pop-up menu.
The list of PTs that belong to the selected class appear below the pop-up menu. The attributes of the selected PT appear below the list of PTs.
- 3 Select the PT you want.
- 4 To save your selection and close the dialog box, click **OK**.
To discard your selection and close the dialog box, click **Cancel**.
You are returned to the Preferences dialog box.

Setting Preferences

Specifying Whether to Disable Warning Messages

You can turn off the display two informational warning messages:

- The Auto Color Balance warning
- The Sharpen Output warning

Error and warning messages are displayed regardless of whether you turn off informational warning messages.

To disable the display of either the Auto Color Balance warning or the Sharpen Output warning, turn on the corresponding check box.

To enable the display of either warning, turn off the corresponding check box.

Getting Information During a Session

While you're working with the Photo CD Acquire Module v3.0, you can get information about the software, the current disc, and the current image.

Getting Software Information

To view information about the Photo CD Acquire Module v3.0:

- On a Macintosh computer, choose
Apple menu → About Plug-in → Kodak Photo CD v3.0.
- On a Windows computer, choose
Help → About Plug-in → Kodak Photo CD v3.0.

The About dialog box appears.

Getting Information During a Session

To view information about the other software used by the Photo CD Acquire Module v3.0 on a Macintosh computer:

- 1 Choose **Apple menu** → **About Plug-in** → **Kodak Photo CD v3.0**.
The About dialog box appears.
- 2 Press **<Command> <G>**.
The About dialog box expands to show additional information.

Getting Information During a Session

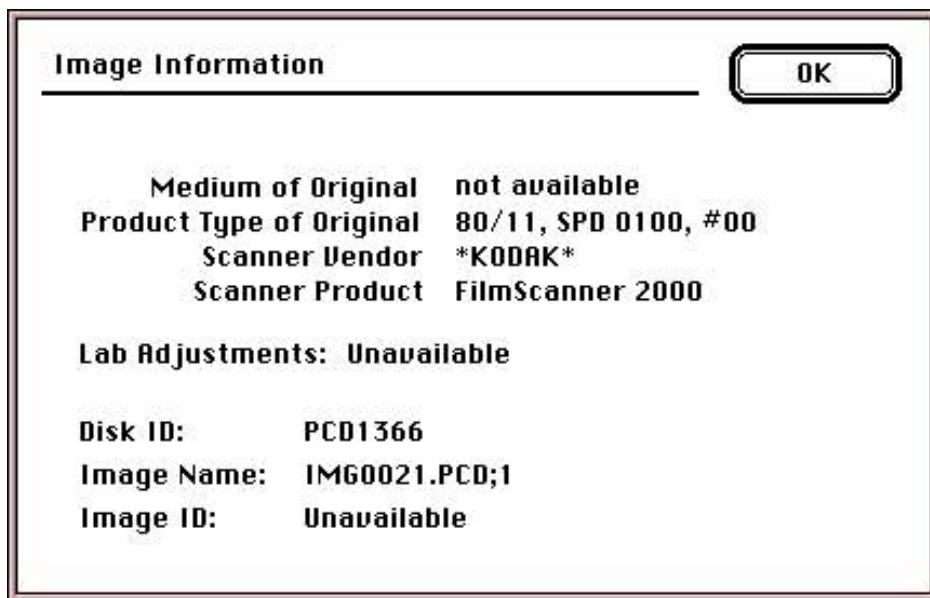
To view information about the other software used by the Photo CD Acquire Module v3.0 on a Windows computer:

- 1 Choose **Help** → **About Plug-in** → **Kodak Photo CD v3.0**.
The About dialog box appears.
- 2 Press <**Control**> <**G**>.
The About dialog box expands to show additional information.
- 3 To close the dialog box, click anywhere within it.

Getting Information During a Session

Getting Information about the Current Disc and Image

To view information about the current Photo CD disc and image, click the **Info...** button from the Main dialog box. The Image Information dialog box appears:



Importing the Image into Photoshop

After you have selected and customized an image, you are ready to import it into Photoshop.

To import the image, click **OK** on the Main dialog box.

The Main dialog box closes, and a progress bar appears as the image is loaded. Depending upon the image size, this may take a few moments.

To cancel the import, from the Main dialog box, click **Cancel**. The Main dialog box closes.

Differences Between 2.x and 3.0

The following sections describe the differences between this version of the Photo CD Acquire Module, and the 2.x versions. Where possible, information is provided to show you how to use the 3.0 version to get the results you got with previous versions of the software.

General Workflow

In general, to match the results you would expect from version 2.x, use the following settings with version 3.0:

- Choose a PCD resolution.
- Turn off **Auto Color Balance**.
- Crop the thumbnail with the **Proportions** check box turned off.
- For the source PT, select **Default Conversion**.
- If you typically turned on the Sharpening check box, select **Medium** from the Sharpen Output pop-up menu.

Differences Between 2.x and 3

Selecting an Image

To select an image using version 2.x, from the file selection box of the Main dialog box, you double-clicked an image name.

To select an image using version 3.0, do either of the following:

- From the file selection box of the Main dialog box, double-click an image name.
- From the file selection box of the Main dialog box, double-click the overview file. The Overview dialog box appears, displaying up to six images per screen. Using the **Next Set** and **Prev Set** buttons, scroll through the available images. To select an image, click it.

Differences Between 2.x and 3

Selecting a Conversion Method

In version 2.x, you specified a conversion method by selecting an option from the Metric pop-up menu of the Main dialog box.

In version 3.0, you specify a source, PT, a display PT, and a destination PT, along with an effect. For the source PT, chose **Default Conversion**.

For more information, see the earlier sections "Specifying the source PT", "Specifying the destination PT", and "Specifying the monitor PT."

Differences Between 2.x and 3.0

Selecting Sharpening

In version 2.x, you selected sharpening by turning on the Sharpening check box on the Edit Image dialog box.

In version 3.0, you specify sharpening by selecting an option from the Sharpen Output pop-up menu on the Main dialog box:

- **None**
- **Low**
- **Medium**
- **High**

Differences Between 2.x and 3.0

Selecting Grayscale

To select grayscale in version 2.x, you selected the Grayscale option from the Metric pop-up menu.

In version 3.0, you can select grayscale in either of two ways:

- On the Main dialog box, turn on the Grayscale check box.
- From the Destination PT Selection dialog box, choose Grayscale from the pop-up menu. When you return to the Main dialog box, the entry Grayscale appears in the DESTINATION text box, and the Grayscale check box is turned on.

Performing Image Edits

In version 2.x, you used the sliders on the Edit Image dialog box to perform image edits manually.

In version 3.0, these adjustments have been replaced by more automatic tools such as color management and the Auto Color Balance, Sharpen Output, and Effects features.

Technical Support



For additional information:

Compuserve: GO KODAK

World Wide Web: <http://www.kodak.com>

Want help? Call 1-800-844-4575 in the U.S. and Canada.
Please have your credit card ready.

Kodak, Digital Science, and the ds monogram symbol are trademarks of Eastman Kodak Company. Other brand or product names are trademarks or registered trademarks of their respective owners.

Document # 820-106776-001 Rev. B