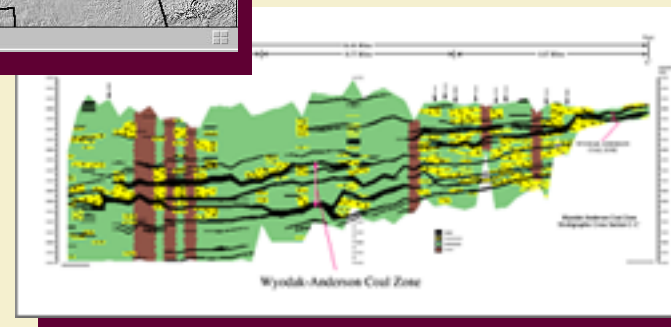
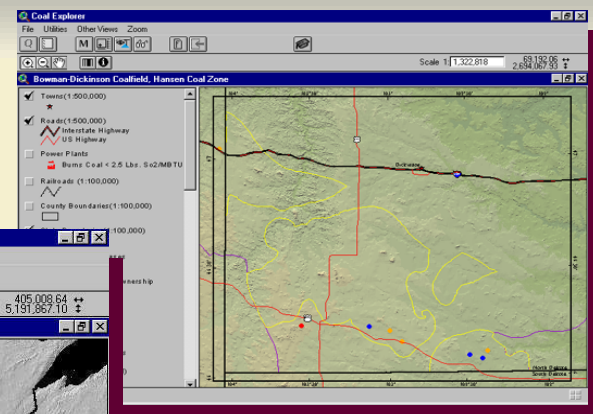
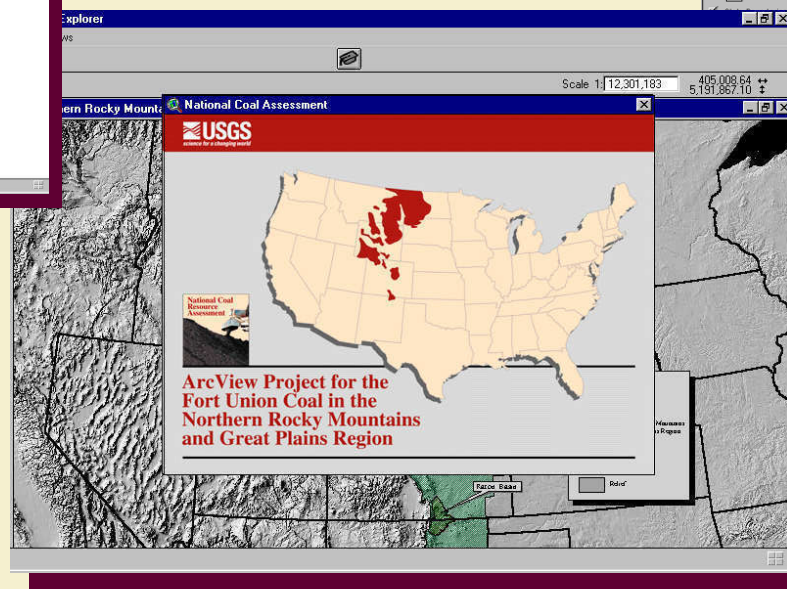
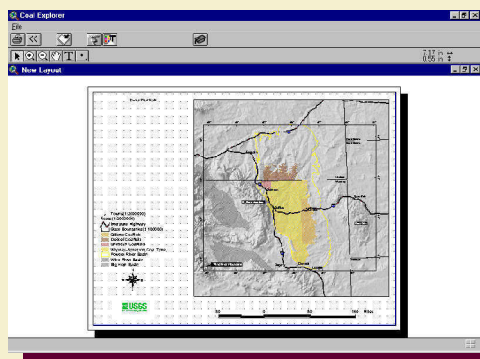


Northern Rocky Mountain and Great Plains Region Disc 2--Interactive Maps Help Documentaion National Coal Resource Assessment



*ArcView software is the intellectual property of ESRI and is provided under license agreement. Copyright (c) 1992-1998 ESRI. All rights reserved.

Disc 2--Interactive Maps Help File

Table of Contents



United States Map View

Northern Rocky Mountains and Great Plains Map View

Coal Basin View

Metadata

Panning/Zooming

Information Access

Graphics

Map Creation

Navigation

Study Area View

View Cross Sections

Query

Glossary

Glossary Page 1

Glossary Page 2

Glossary Page 3

CDROM Data Structure

United States Map View

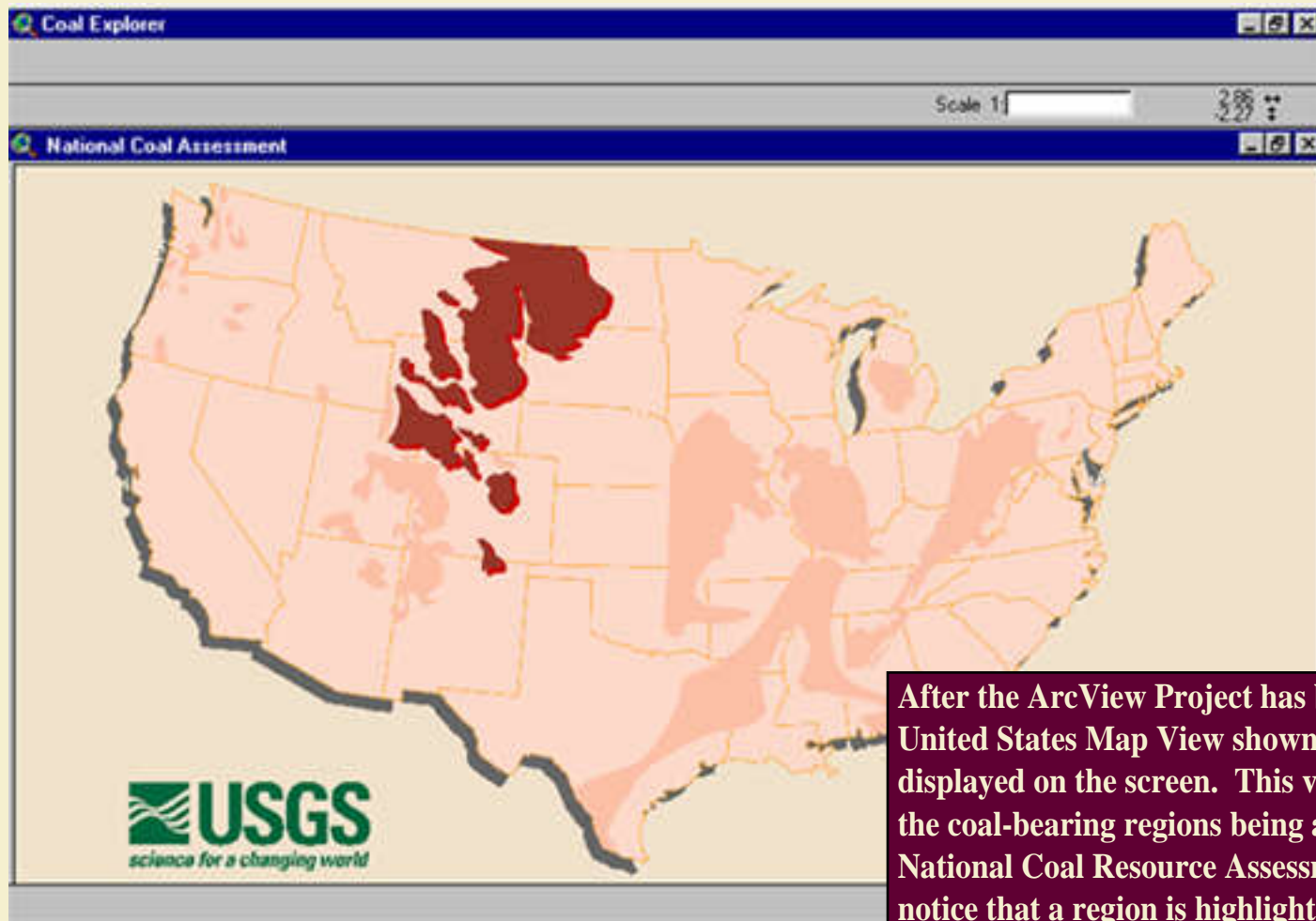


Back



Forward

[Table of Contents](#)



After the ArcView Project has been loaded, the United States Map View shown here will be displayed on the screen. This view shows all of the coal-bearing regions being assessed in the National Coal Resource Assessment. You will notice that a region is highlighted. This is the Northern Rocky Mountains and Great Plains Region. Click on any part of the highlighted region to continue with the project.

*Please See [glossary](#) before proceeding if you have never used ArcView

Northern Rocky Mountains and Great Plains Region Map View



Back

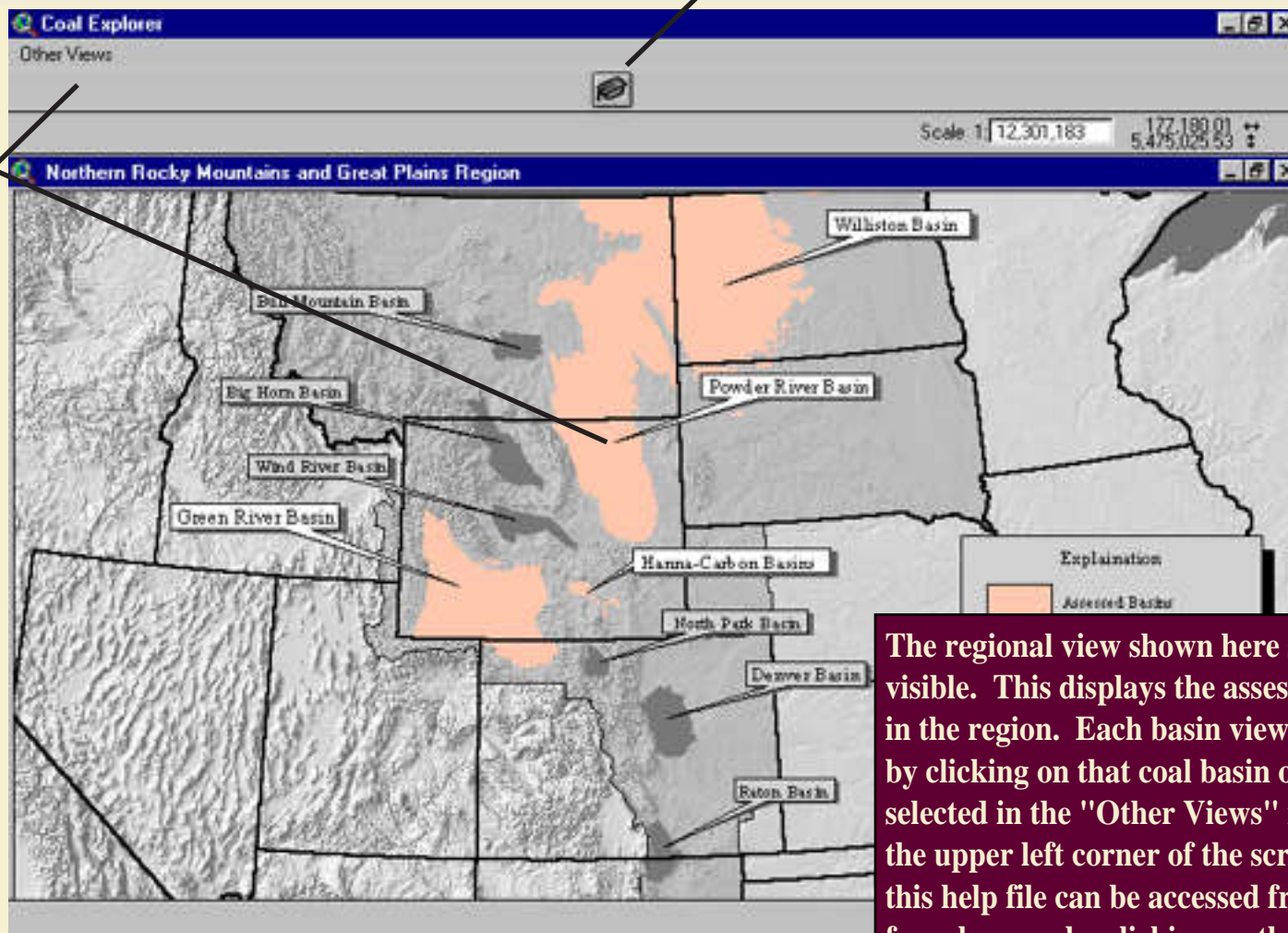


Forward

[Table of Contents](#)

ArcView Project Help Button

Coal Basin views can be accessed by using the "Other Views" menu or by clicking on a particular coal basin.



The regional view shown here should now be visible. This displays the assessed coal basins in the region. Each basin view can be accessed by clicking on that coal basin or can be selected in the "Other Views" menu located in the upper left corner of the screen. In addition, this help file can be accessed from any view from here on by clicking on the help button located at the top of the ArcView Project window.

Coal Basin View



Back



Forward

[Table of Contents](#)

Metadata

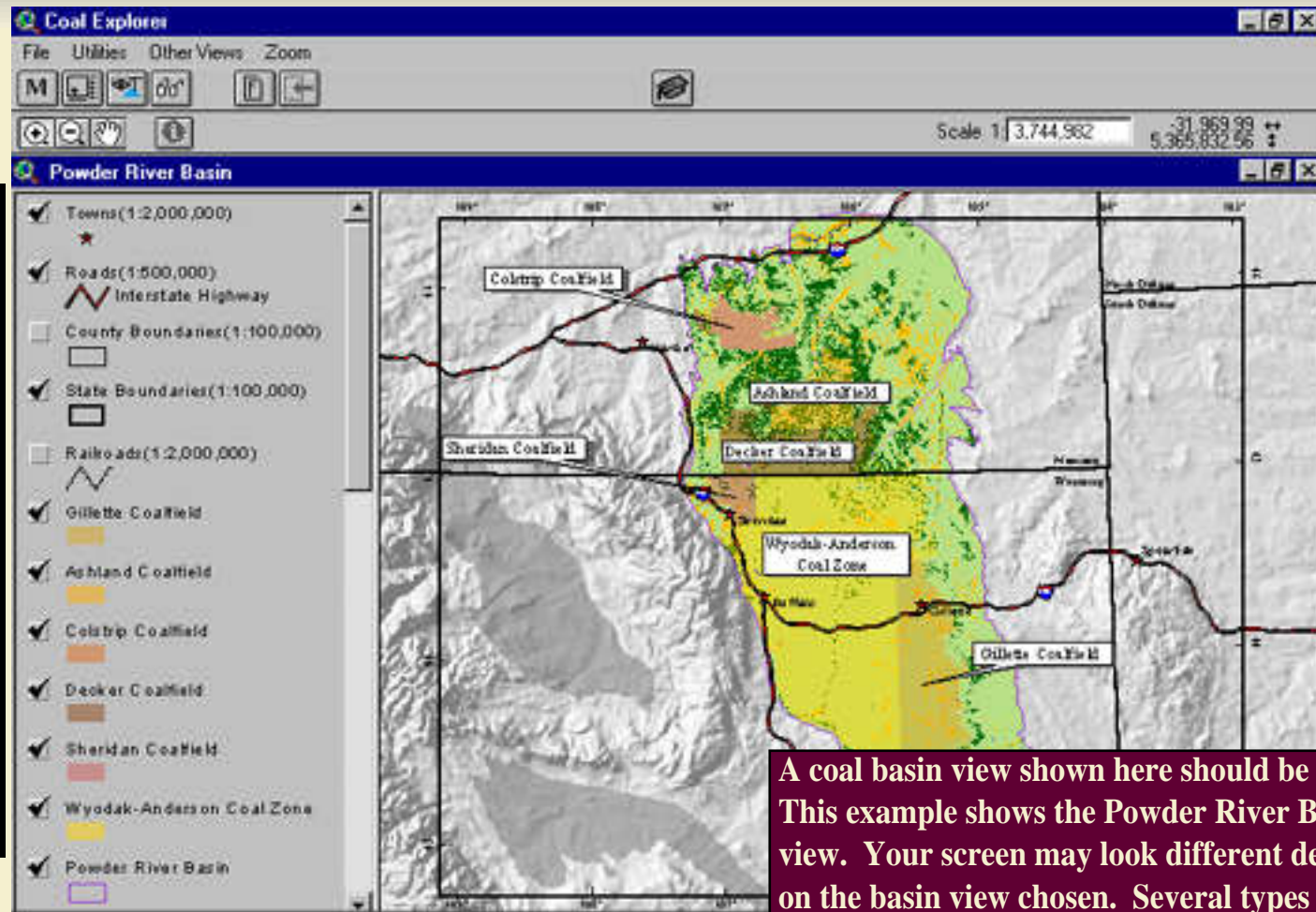
Panning/Zooming

Information
Access

Graphics

Map Creation

Navigation



A coal basin view shown here should be visible. This example shows the Powder River Basin view. Your screen may look different depending on the basin view chosen. Several types of actions can be performed in a "Basin View." You can access detailed information about these actions by clicking on a desired action category located at the left of the screen.

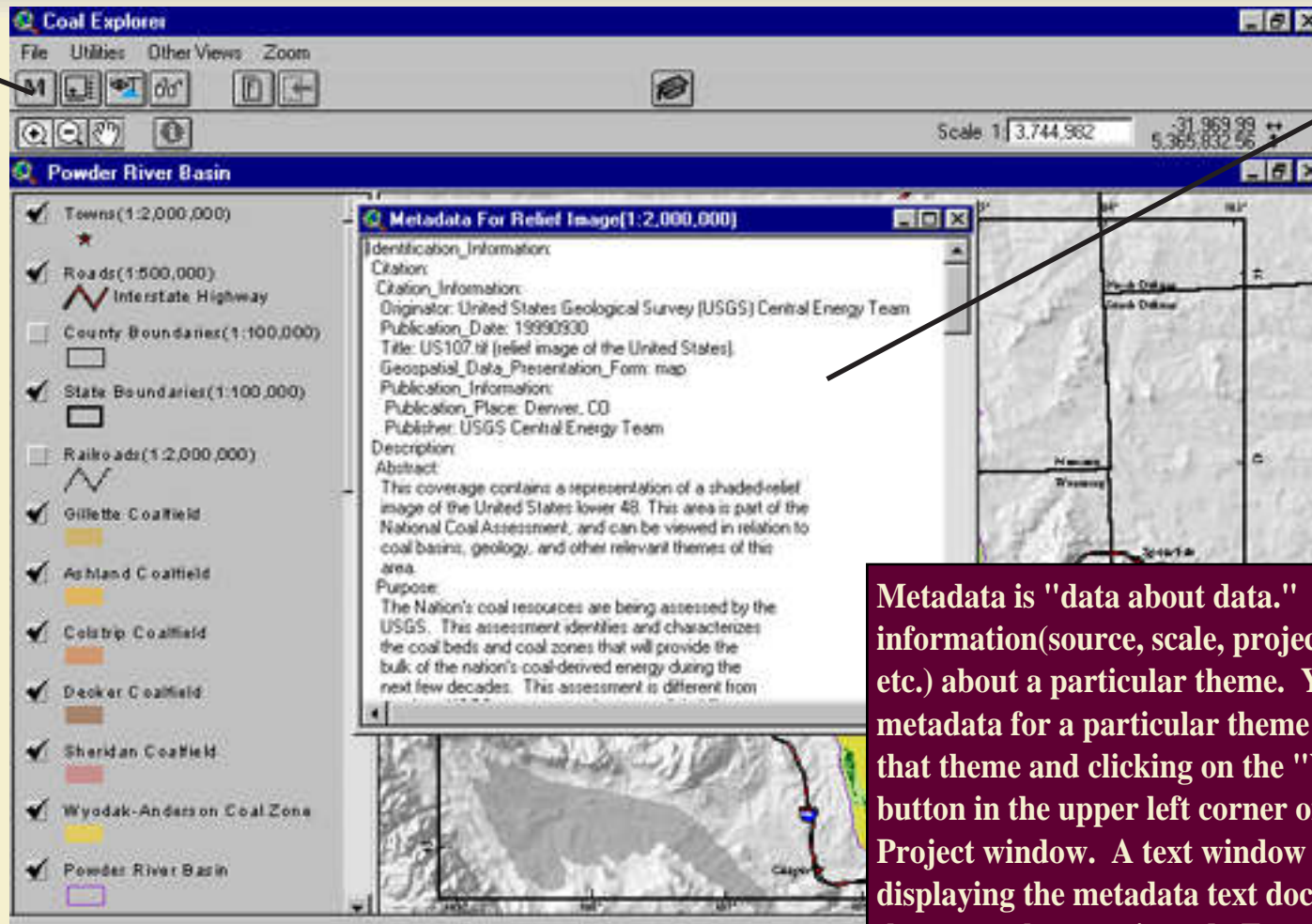
Basin View-Metadata



Back

Table of Contents

View Metadata
Button



Metadata Text
Window

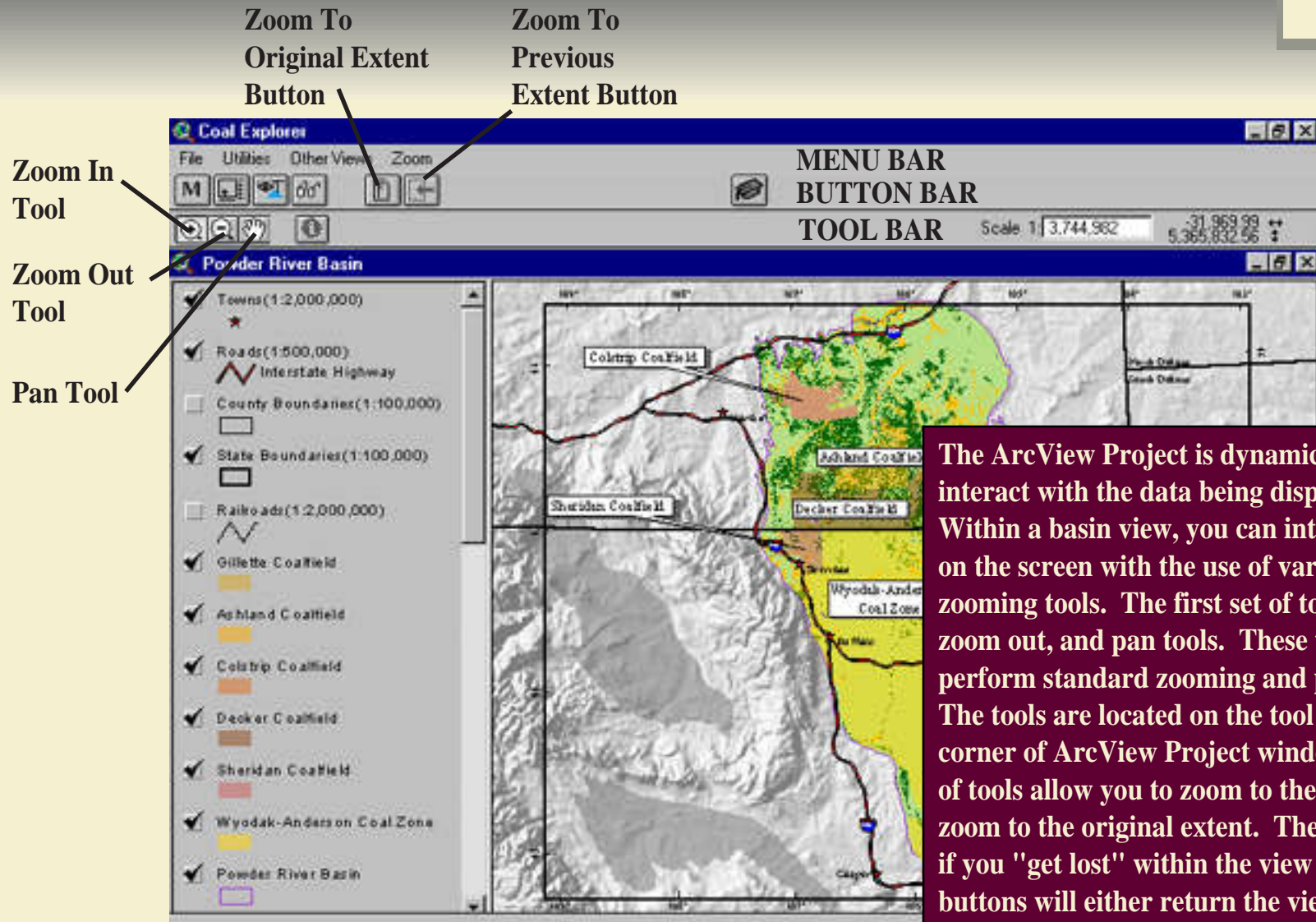
Metadata is "data about data." It provides information(source, scale, projection, etc.) about a particular theme. You can view the metadata for a particular theme by activating that theme and clicking on the "View Metadata" button in the upper left corner of the ArcView Project window. A text window will appear displaying the metadata text document for the theme you have activated. For more information about themes, how to activate them and how they are used in the ArcView Project, please see the [glossary](#).

Basin View-Panning/Zooming



Back

Table of Contents



The ArcView Project is dynamic. It allows you to interact with the data being displayed on the screen. Within a basin view, you can interact with the data on the screen with the use of various panning and zooming tools. The first set of tools are the zoom in, zoom out, and pan tools. These tools allow you to perform standard zooming and panning operations. The tools are located on the tool bar in the upper left corner of ArcView Project window. The second set of tools allow you to zoom to the previous extent and zoom to the original extent. These tools are helpful if you "get lost" within the view window. These buttons will either return the view display to a previous extent or get you back to the zoom extent the view opened up to. These tools are the last two tools on the button bar.

Basin View-Information Access

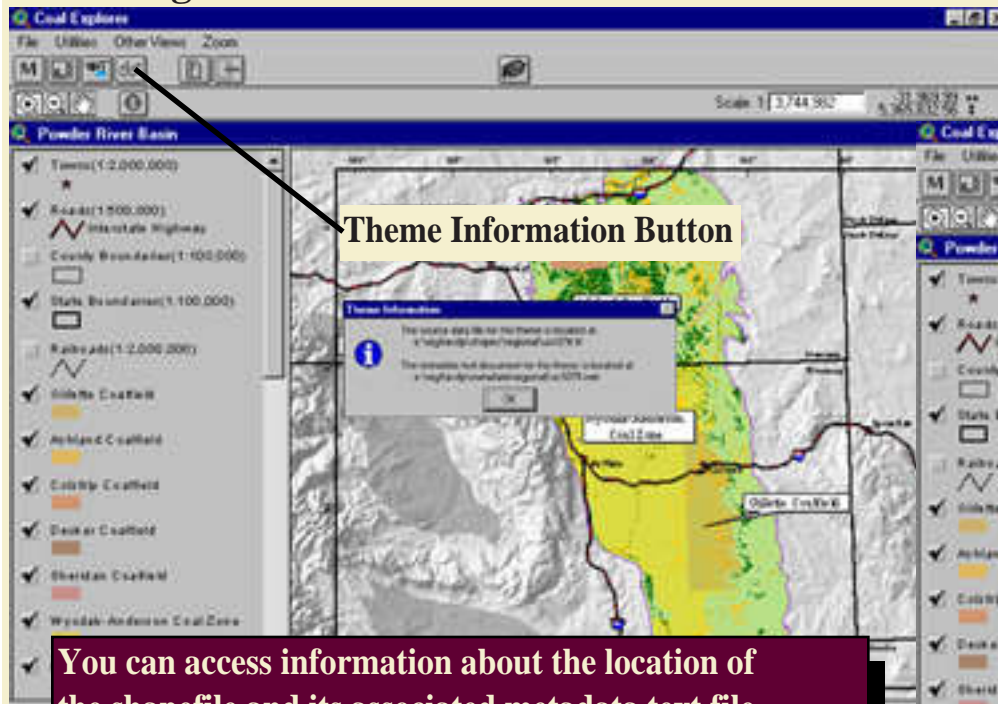


Back

There are two types of actions in a basin view which allow you to access various kinds of information. These are viewing feature tabular data and accessing theme information.

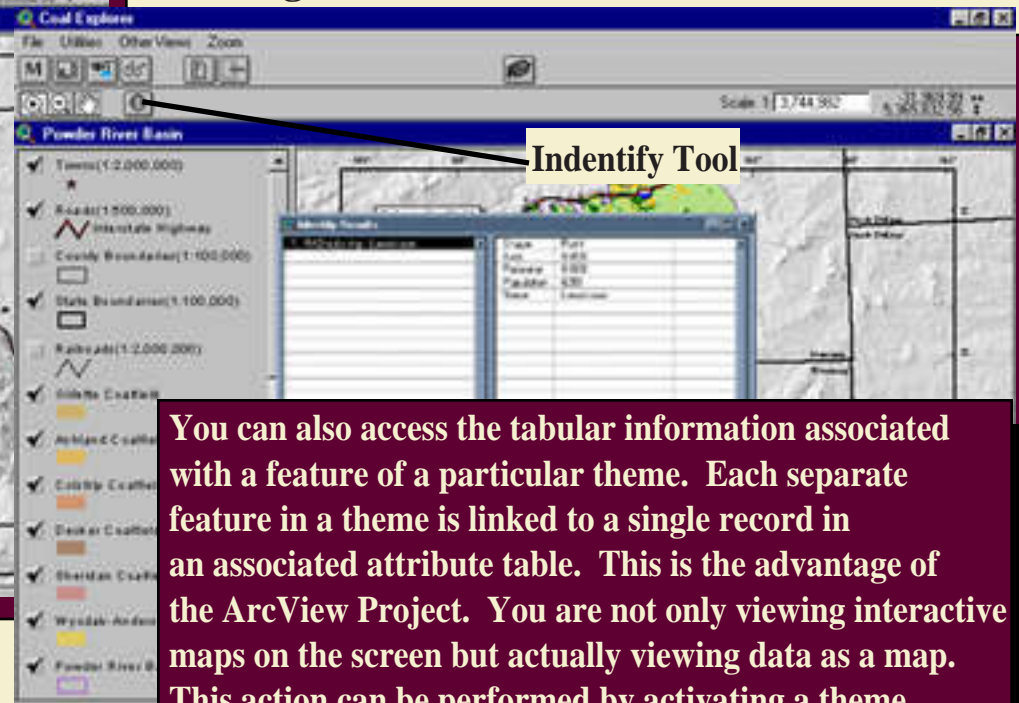
Table of Contents

Accessing Theme Information



You can access information about the location of the shapefile and its associated metadata text file of a particular theme. This is helpful for anyone who wishes to access the raw data used in the ArcView Project. To perform this action, activate the theme of interest and click the "Theme Information" button. A window will appear giving the path to that theme's shapefile and metadata text file.

Viewing Feature Tabular Data



You can also access the tabular information associated with a feature of a particular theme. Each separate feature in a theme is linked to a single record in an associated attribute table. This is the advantage of the ArcView Project. You are not only viewing interactive maps on the screen but actually viewing data as a map. This action can be performed by activating a theme of interest, selecting the "Identify Tool", and clicking on a feature of interest in the view window. A window will appear, which displays the record in the attribute table associated with that feature.

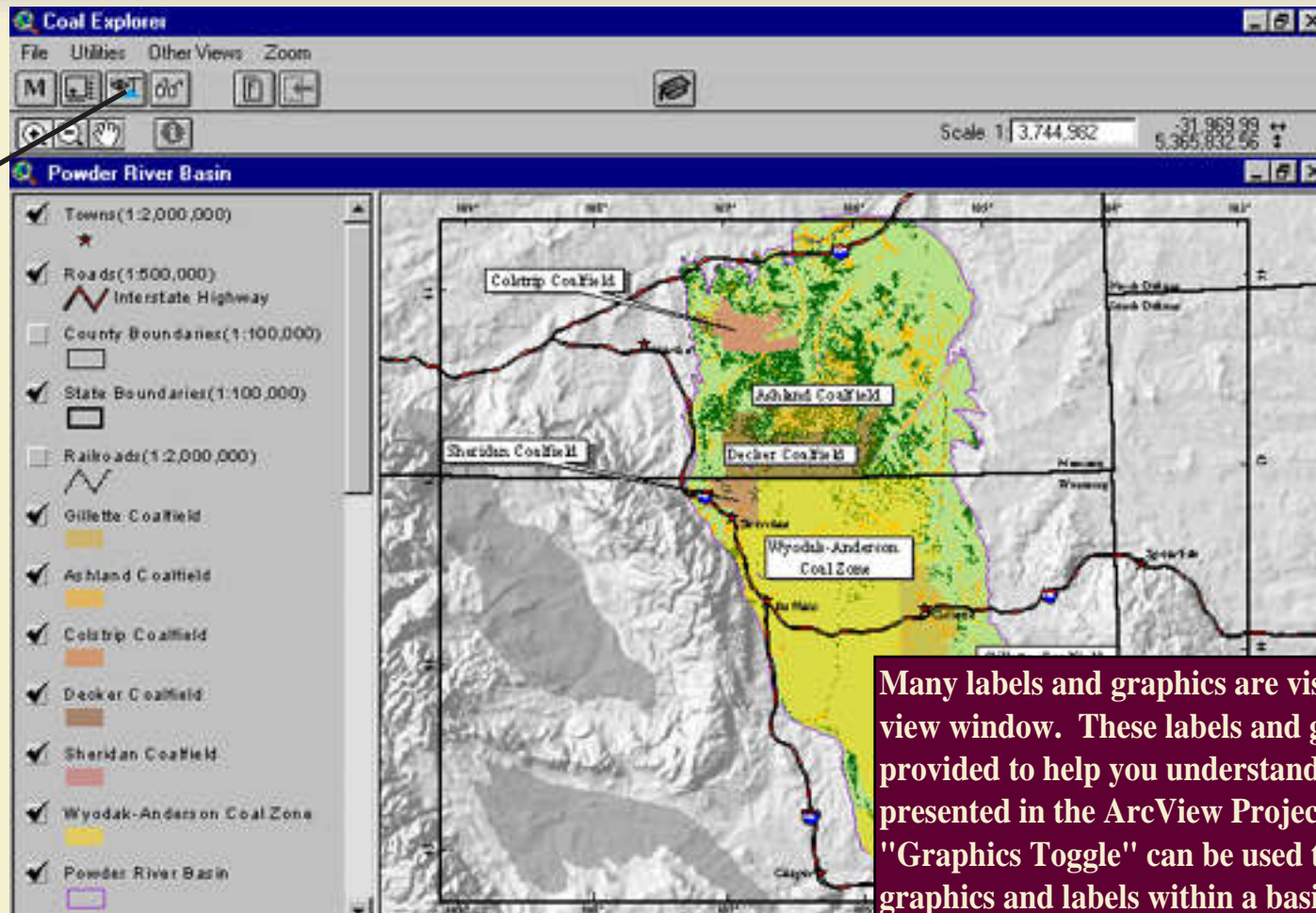
Basin View-Graphics



Back

Table of Contents

Graphics
Toggle



Many labels and graphics are visible in the basin view window. These labels and graphics have been provided to help you understand the data presented in the ArcView Project. The "Graphics Toggle" can be used to toggle the graphics and labels within a basin view (on or off). This can be useful for those who are familiar with the data being presented and feel the graphics and labels are unnecessary.

Basin View-Map Creation

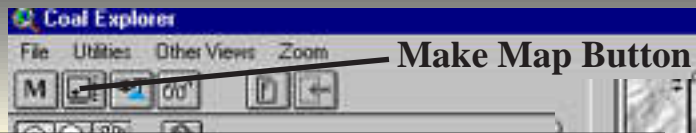


Back



Forward

Table of Contents

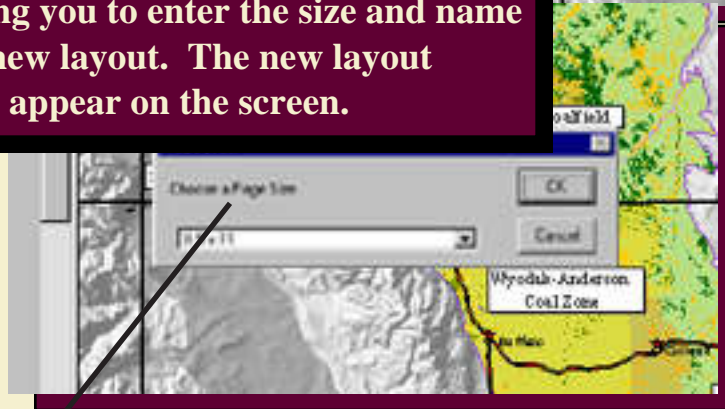


Make Map Button

The ArcView Project allows you to create custom maps of any view. In the ArcView Project, these maps are called layouts. Please see the [glossary](#) for a detailed description of a layout. Press the "Make Map" button to create a map. You will be prompted with two dialogue windows requesting you to enter the size and name of your new layout. The new layout will then appear on the screen.

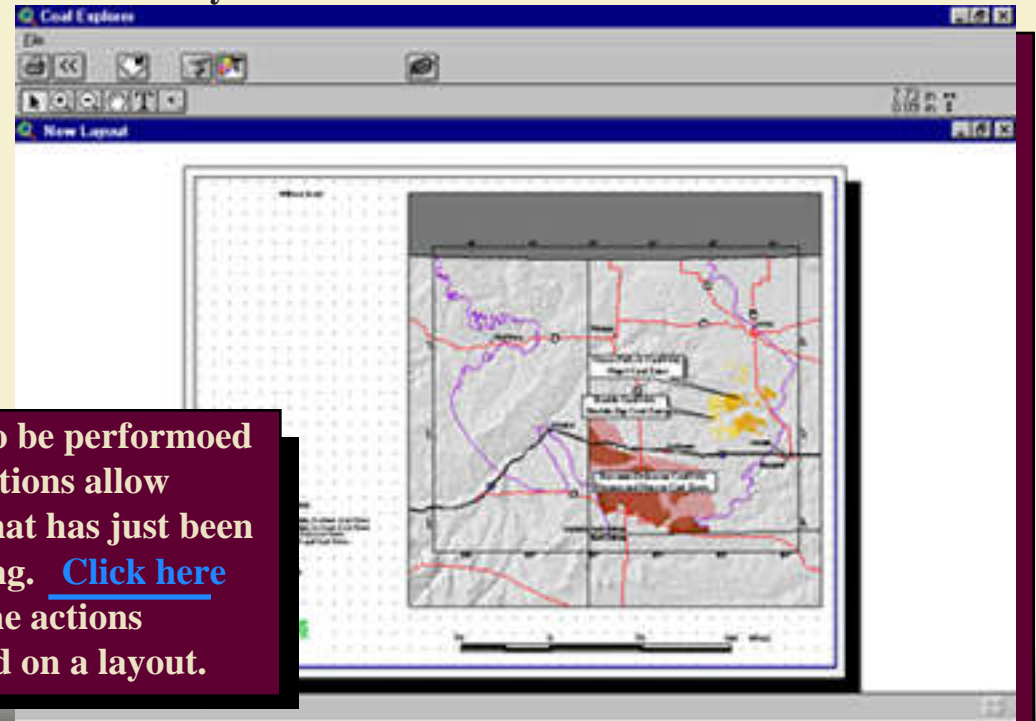


Layout Name Dialogue Window



Layout Size Dialogue Window

ArcView Layout Window



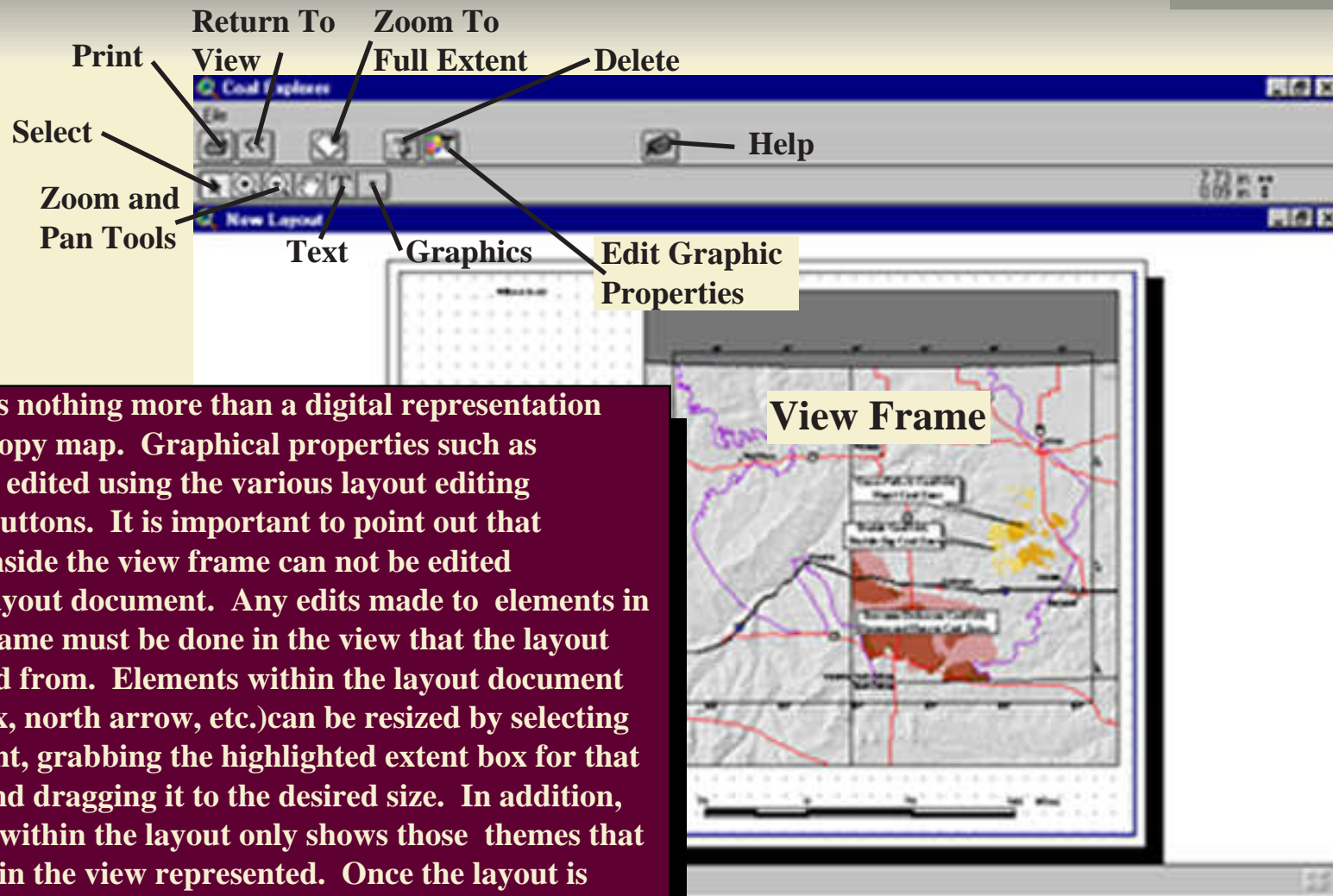
Many actions can also be performed on a layout. These actions allow you to edit the map that has just been created before printing. [Click here](#) to read more about the actions that can be performed on a layout.

Layout Window



Back

Table of Contents



View Frame

A Layout is nothing more than a digital representation of a hard copy map. Graphical properties such as text can be edited using the various layout editing tools and buttons. It is important to point out that elements inside the view frame can not be edited from the layout document. Any edits made to elements in the view frame must be done in the view that the layout was created from. Elements within the layout document (legend box, north arrow, etc.) can be resized by selecting that element, grabbing the highlighted extent box for that element, and dragging it to the desired size. In addition, the legend within the layout only shows those themes that are visible in the view represented. Once the layout is complete, it can be sent to a printer or plotter directly from the layout screen.

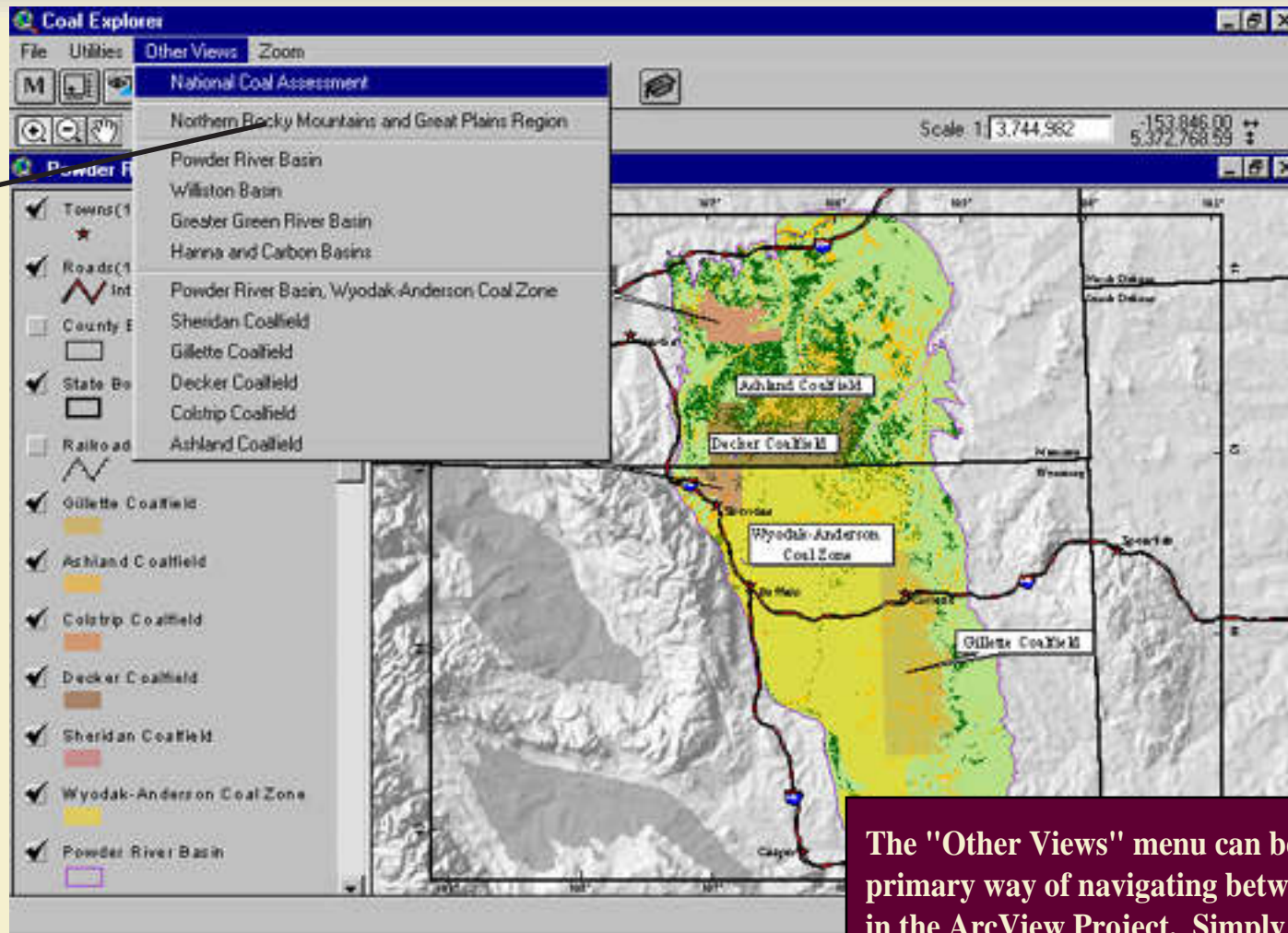
Basin View-Navigation



Back

Table of Contents

Navigation
Menu



The "Other Views" menu can be used as the primary way of navigating between different views in the ArcView Project. Simply click on the "Other Views" menu and select a view to look at.

Study Area View



Back

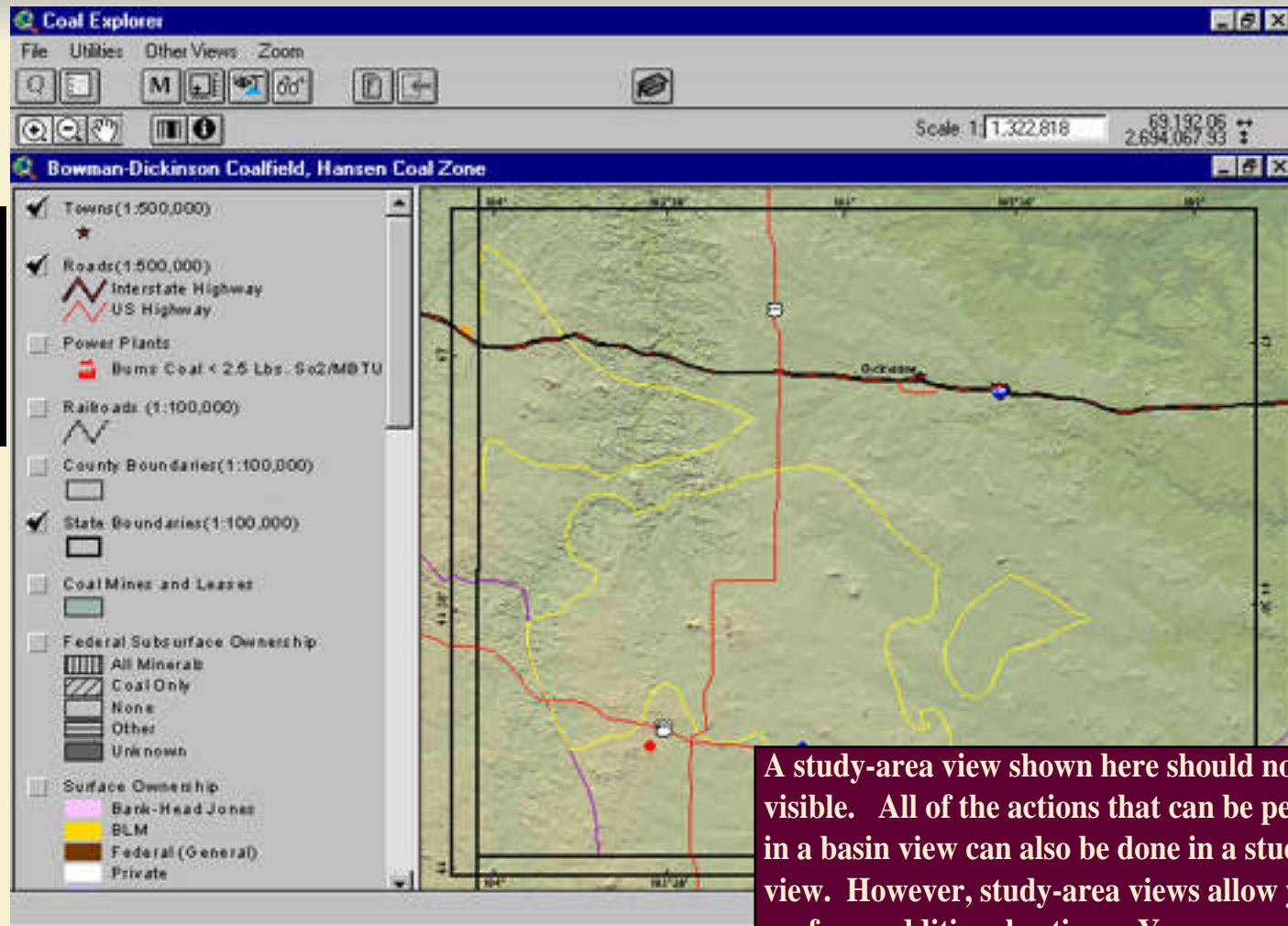


Forward

[Table of Contents](#)

View
Cross Sections

Query



A study-area view shown here should now be visible. All of the actions that can be performed in a basin view can also be done in a study area view. However, study-area views allow you to perform additional actions. You can access detailed information about these actions by clicking on a desired action category located at the left of the screen.

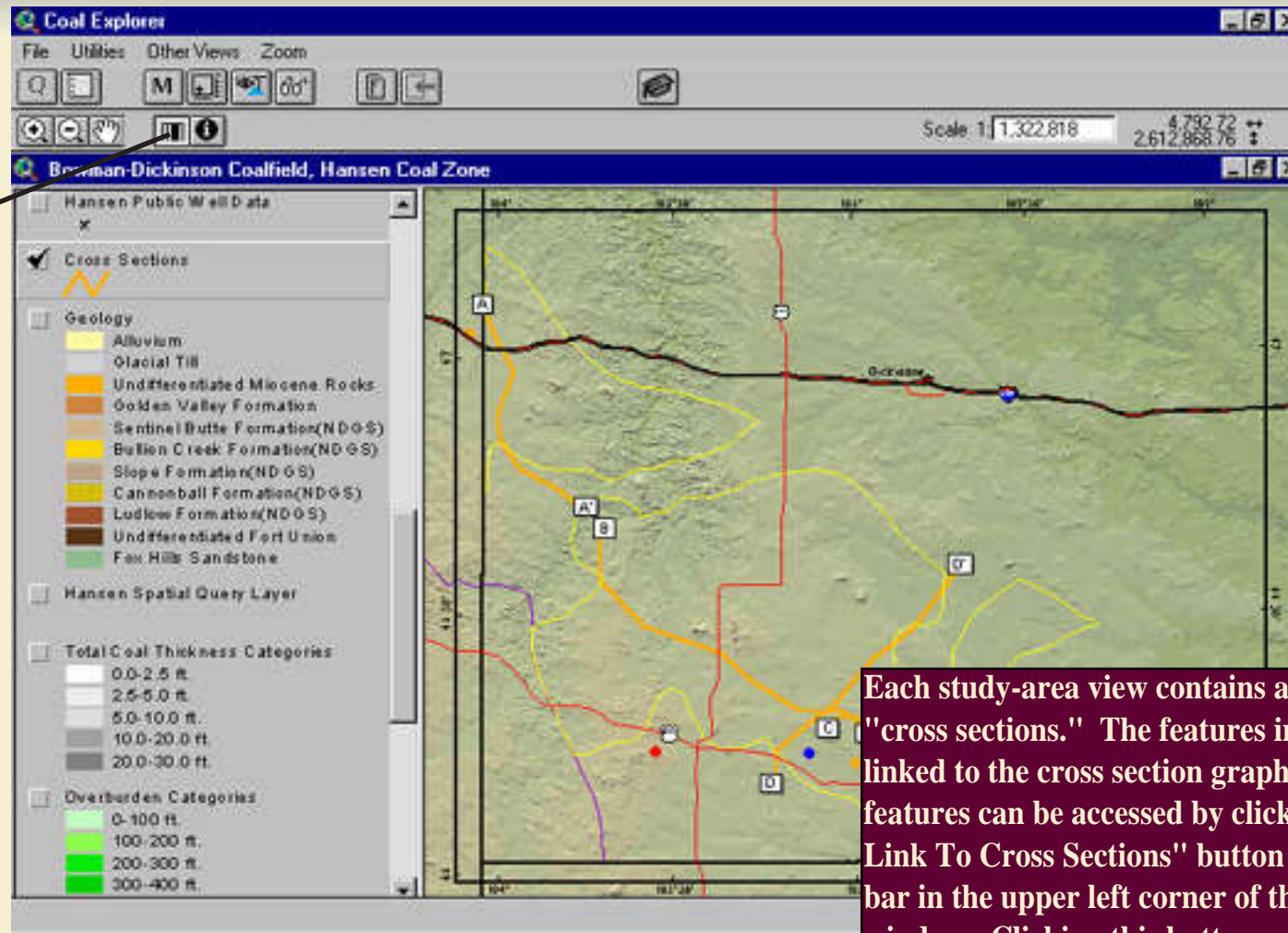
Study Area View-View Cross Sections



Back

Table of Contents

Hot Link To
Cross Sections



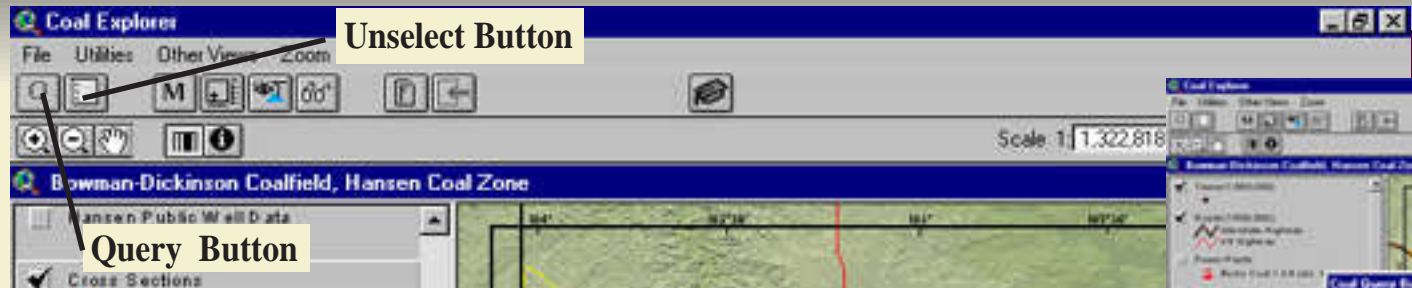
Each study-area view contains a theme labeled "cross sections." The features in this theme are linked to the cross section graphics. These features can be accessed by clicking on the "Hot Link To Cross Sections" button located on the toolbar in the upper left corner of the ArcView Project window. Clicking this button activates the cross sections theme. Click on the cross section line of interest. To view a cross section, be sure to click on the cross section line, not it's label.

Study Area View-Query



Back

Table of Contents



Unselect Button

Query Button

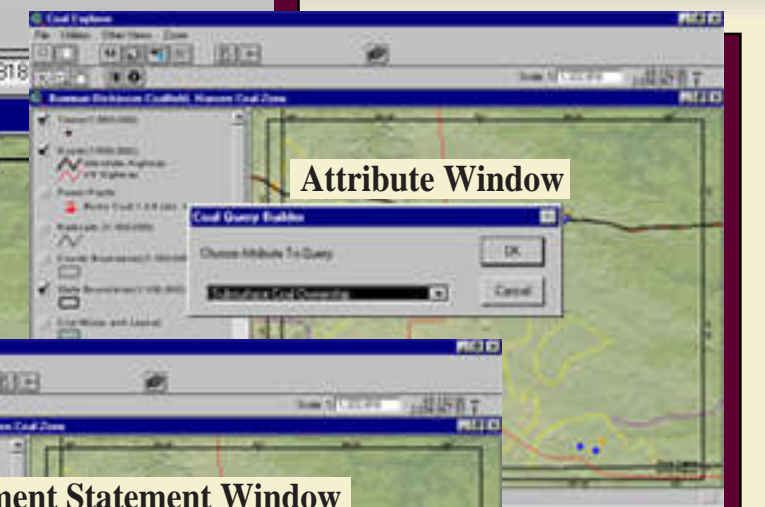
Scale: 1:1,322,818

Bowman-Dickinson Coalfield, Hansen Coal Zone

Hansen Public Well Data

Cross Sections

Suppose you have questions that one of the themes in a view does not answer. The Project provides the opportunity to query certain themes to help you answer these questions. The themes that can be query are the "Spatial Query Layer" and the "Public Well Data" themes. To perform a query on one of these themes, simply activate the theme you wish to query and press the "Query Button." You will be prompted with several windows that will help build your query. The first window requires you to choose an attribute to query. You will then be required to choose an assignment statement(e.g. "less than", "greater than", "equal to", etc.). Lastly, you will be required to enter the value you wish to query. You will then be required to verify your query. If you queried, the "Spatial Query Layer" the areas that satisfy the query will be highlighted in yellow. If you queried the "Public Well Data" theme, the drill holes that met the query requirements will be highlighted in yellow. Now you may want to perform another query. Press the unselect button to purge your previous query results and then build another query.



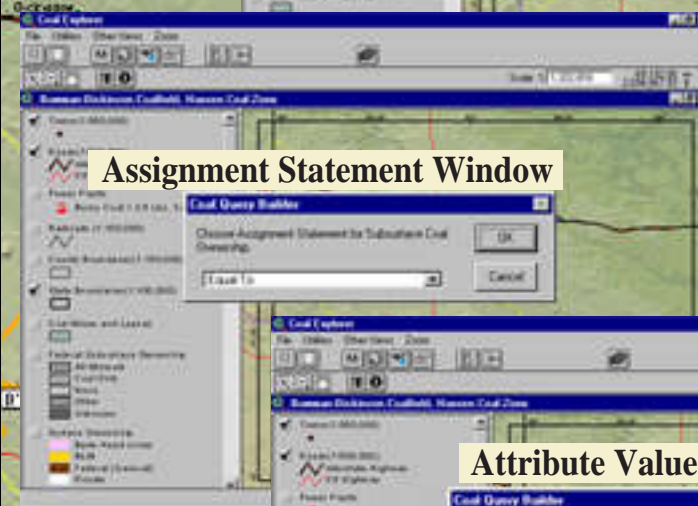
Attribute Window

Coal Query Builder

Choose Attribute To Query

Substation Coal Ownership

OK Cancel



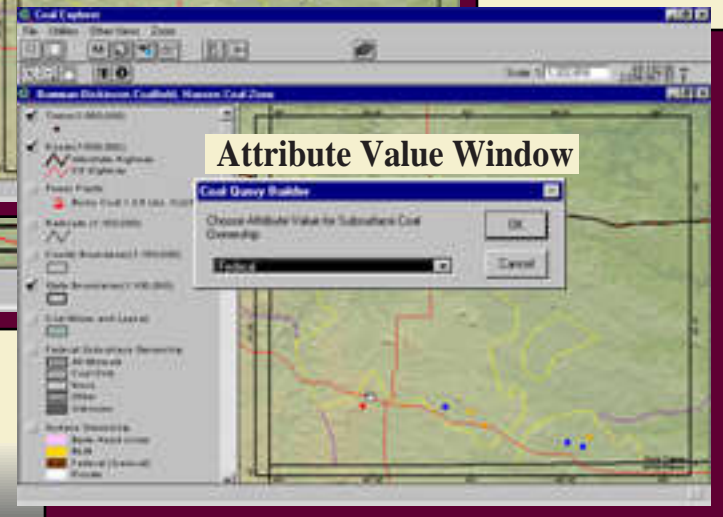
Assignment Statement Window

Coal Query Builder

Choose Assignment Statement for Substation Coal Ownership

Less Than

OK Cancel



Attribute Value Window

Coal Query Builder

Choose Attribute Value for Substation Coal Ownership

Field

OK Cancel

ArcView Project Glossary-1



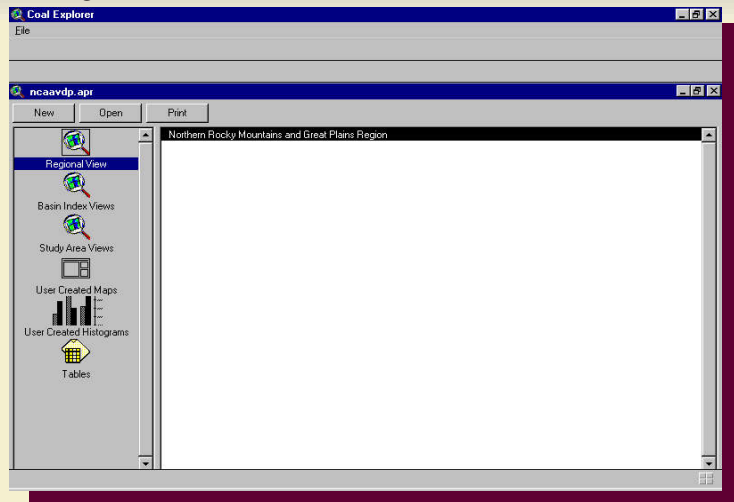
Back



Forward

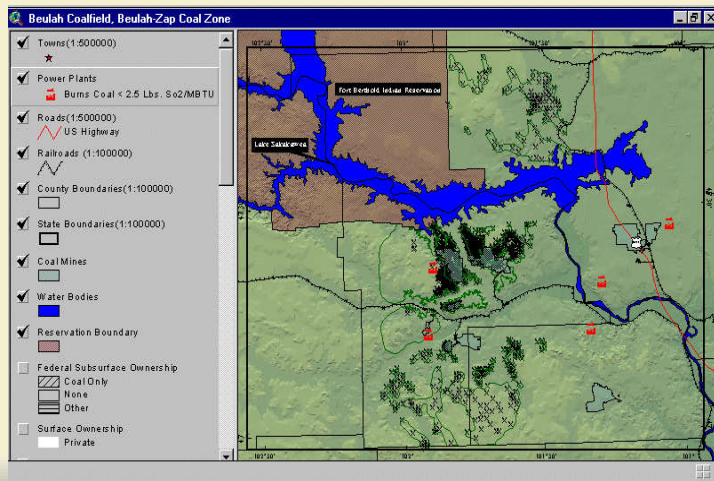
[Table of Contents](#)

Project Window



The ArcView Project window provides the user with the ability to navigate throughout the project. Each document type that can be accessed by the user will be listed here. The user may also reactivate the opening view by selecting "start" under the File menu.

View



A view is made up of thematic information or collections of geographic features, such as rivers, roads, geology, and coal resources. Each of these are contained in layers called themes. Each view covers a particular area or place. Several actions can be performed in a view allowing the user to interact with the data.

ArcView Project Glossary-2



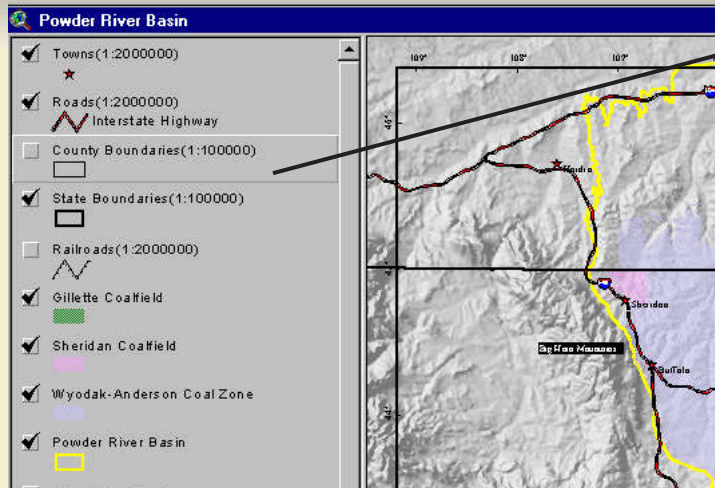
Back



Forward

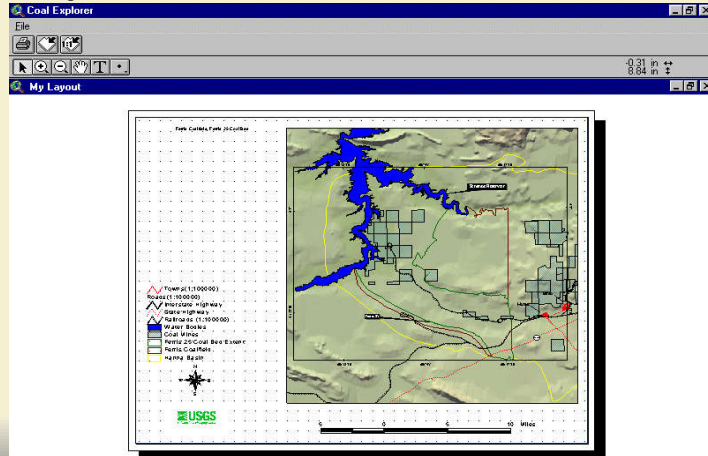
[Table of Contents](#)

Theme



A theme is a single data source or layer in the view window table of contents. Some tools in the project require an active theme to be specified. A theme can be activated by clicking on that theme in the view window table of contents. The theme is active when the legend box for that theme is highlighted (see graphic to the left). To make the theme visible or not visible, simply toggle the check box located at the far left edge of the theme's legend box. The order of the themes in the view table of contents can also be changed. This is important because the layer you are interested in may be covered by other visible themes that are above it in the table of contents. To change the order of the themes, simply activate the theme of interest and move it while keeping the left mouse button pressed. Keeping the left mouse button pressed allows you to "grab" the theme. You can now drag the theme to a new position in the view table of contents.

Layout



A layout is nothing more than a digital representation of a hard copy map. The map "page" is shown in order to allow the user to place labels, graphics, and text in desirable locations for hard copy output.

ArcView Project Glossary-3



Back



Forward

[Table of Contents](#)

Table

The screenshot shows the 'Coal Explorer' application window. The title bar reads 'Coal Explorer'. The menu bar includes 'File', 'Edit', 'Table', 'Field', 'Window', and 'Help'. The toolbar contains various icons for file operations, editing, and viewing. Below the toolbar, it says '0 of 1203 selected'. The main window displays a table titled 'Attributes of Farris 50 Resources'. The table has the following columns: Shape, Area, Perimeter, Net Coal Thickness Category, Overburden Categories, Mine Name, and Lease Status. The table contains 50 rows of data, each representing a resource. The first few rows are as follows:

Shape	Area	Perimeter	Net Coal Thickness Category	Overburden Categories	Mine Name	Lease Status
Polygon	719.06292	197.19928	5.0-10.0 ft.	0-100 ft.	No Mine	Leased PATS E
Polygon	100642.44281	1497.47112	5.0-10.0 ft.	0-100 ft.	No Mine	Leased PATS E
Polygon	5386.17669	466.16381	5.0-10.0 ft.	0-100 ft.	No Mine	Not Leased PATS E
Polygon	677211.82243	3754.75029	5.0-10.0 ft.	0-100 ft.	No Mine	Not Leased PATS E
Polygon	1589.47302	164.60370	5.0-10.0 ft.	0-100 ft.	No Mine	Not Leased PATS E

Tables contain the attribute information of the themes. Each record corresponds to a feature in each associated theme.

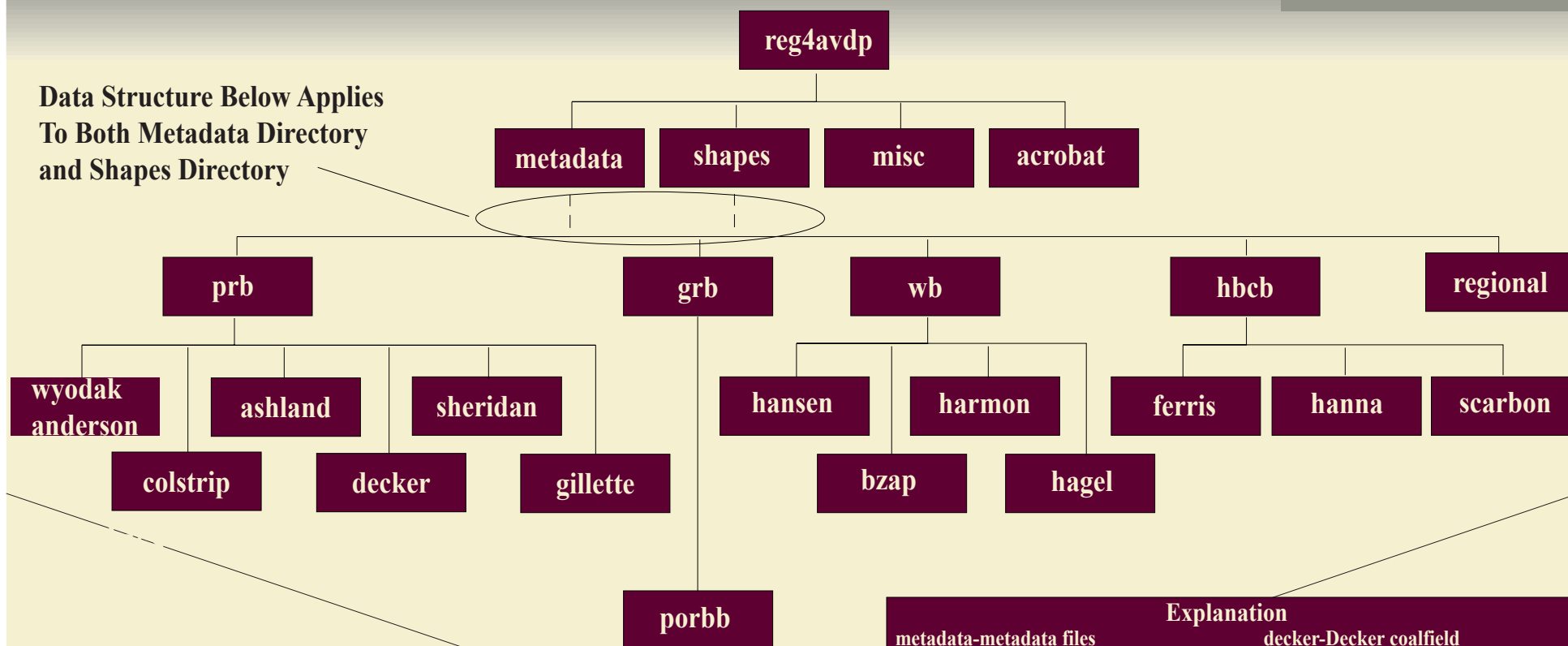
CDROM Data Structure



Back

Table of Contents

Data Structure Below Applies
To Both Metadata Directory
and Shapes Directory



*Each of the lowest level directories
contain the xsections directory

xsections

Explanation

metadata-metadata files
shapes-shapefiles
misc-miscellaneous files
acrobat- acrobat program files
prb-Powder River Basin
grb-Greater Green River Basin
hbcb-Hanna and Carbon Basins
wb-Williston Basin
regional-regional files
wyodak anderson-Wyodak-Anderson
ashland-Ashland coalfield
sheridan-Sheridan coalfield
colstrip-Colstrip coalfield

decker-Decker coalfield
gillette-Gillette coalfield
porbb-Point of Rocks-Black Butte
hansen-Hansen coal zone
harmon-Harmon coal zone
bzap-Beulah-Zap coal zone
hagel-Hagel coal zone
ferris-Ferris coalfield
scarbon-South Carbon coalfield
hanna-Hanna coalfield
xsections-Cross Sections