

INSTRUCTIONS ON HOW TO INSTALL USB MODEM

NOTE: the mdmiden.inf supports RS232 and USB modems. The cdciden.inf supports USB device for Windows 98 SE.

Who should use this manual

This user's guide is intended for those users that would utilize an iDEN USB Data Cable with iDEN PC Applications.

What to look for in this manual

This manual explains how to configure your computer to add this new hardware and install the appropriate drivers necessary to utilize this data cable.

Installation Instructions

System Requirements

Processor	80846 or later
Memory (RAM)	4 MB (16 MB recommended)
Free hard disk space for installation	8 MB
CD Drive	CD-ROM Drive
Operating System	Windows 98™ Second Edition, or Windows 2000™

1. Insert the iDEN PC Application CD-ROM into your computer's CD-ROM Drive.
2. If you have Autorun enabled, follow the on-screen instructions.
Or, if Autorun is not enabled, click "Start" on the Taskbar, then select "Run", then type D:\setup.exe, where D is your CD-ROM drive.
3. Proceed to install the iDEN PC Application following the Application Installation Instructions provided with the application.

Setting up the Hardware

- 1) Connect the iDEN USB Data Cable to the desired computer. Connect the other end of the iDEN USB Data Cable to the bottom connector of the phone.
Note: Must have an i85s, i50sx, or i55sr phone with software version R32.01.00 or later.

If you have Windows 98 Second Edition (SE). Please follow the instructions on the next page. If you have Windows 2000, the instructions are located after the Window 98 Second Edition section.

Windows 98 Second Edition with USB support

When using Windows 98 SE, you will need to install the USB Composite Device (cdcciden.inf) and then iDEN modem (mdmiden.inf).

a) Installing the Composite Device (CDC) (cdcciden.inf)

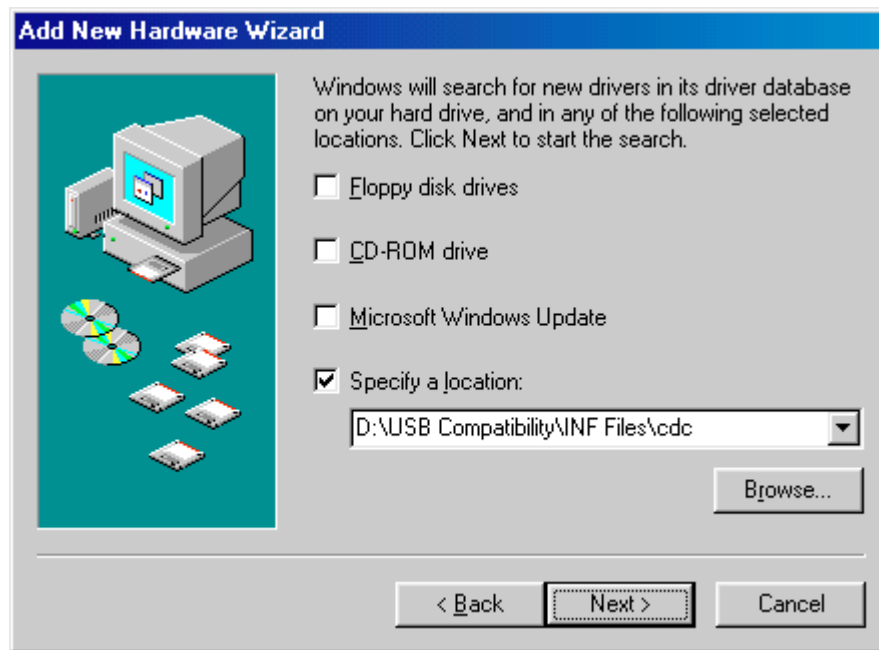
- (1) When the “Add New Hardware Wizard” window appears, click “Next”.



- (2) Choose the option “Search for the best driver for your device...” and click “Next”.



- (3) Check the “Specify a location:” option.
- (4) Type D:\USB Compatibility\INF Files\cdc where D is your CD-ROM drive.
- (5) Click “Next” to allow Windows to search for drivers.



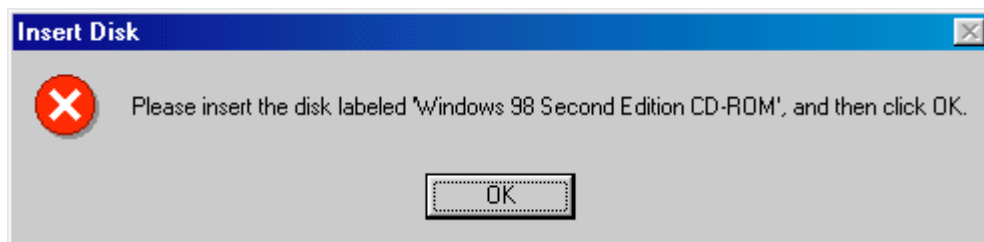
- (6) Choose “The updated driver...” option and click “Next”.



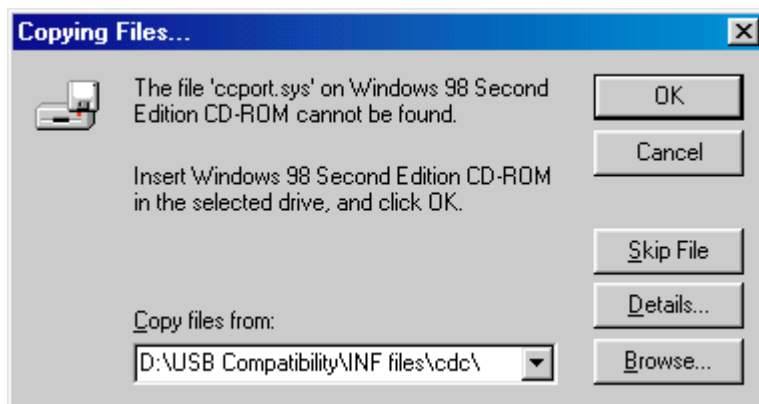
(7) Click “Next” to begin installation of this driver.



NOTE: After clicking “Next”, Windows may ask you to insert Windows 98 Second Edition CD-ROM. Click “OK” without inserting any CD-ROM.



Next, type in D:\USB Compatibility\INF Files\cdc. This is where the cdciden.inf file is located. Click “OK”.



- (8) Click “Finish” to finish the CDC installation.



b) Installing the iDEN Modem Device (mdmiden.inf).

- (1) Click “Next” when the “Add New Hardware Wizard” window appears.



- (2) Choose the option “Search for the best driver...” and click “Next”.

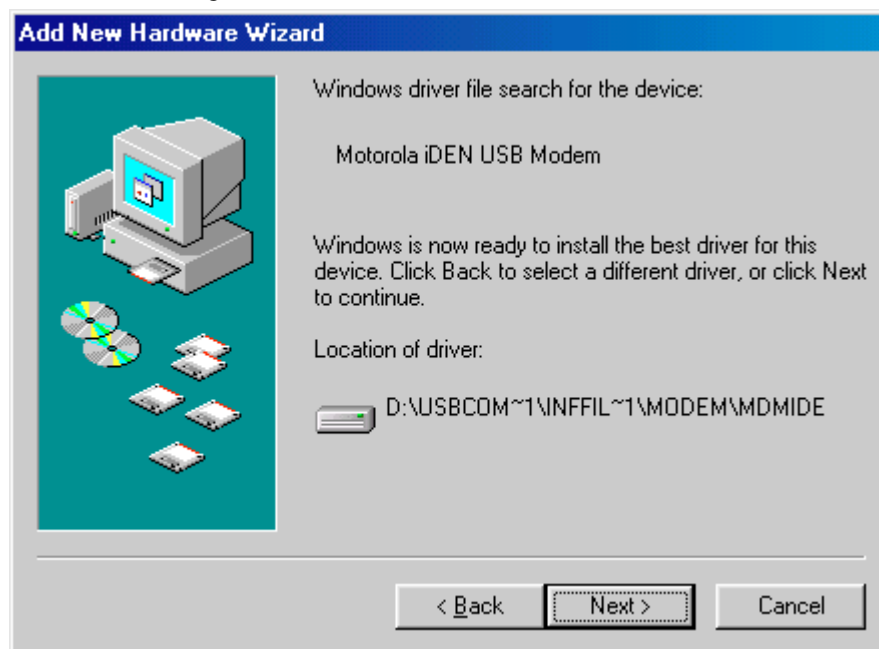


- (3) Check the “Specify a location:” option.
- (4) Type D:\USB Compatibility\INF Files\modem. This is where the mdmiden.inf file is located.

- (5) Click “Next” to allow Windows to search for drivers.



- (6) Click “Next” to begin installation.



(7) Click “Finish” to finish the modem installation.



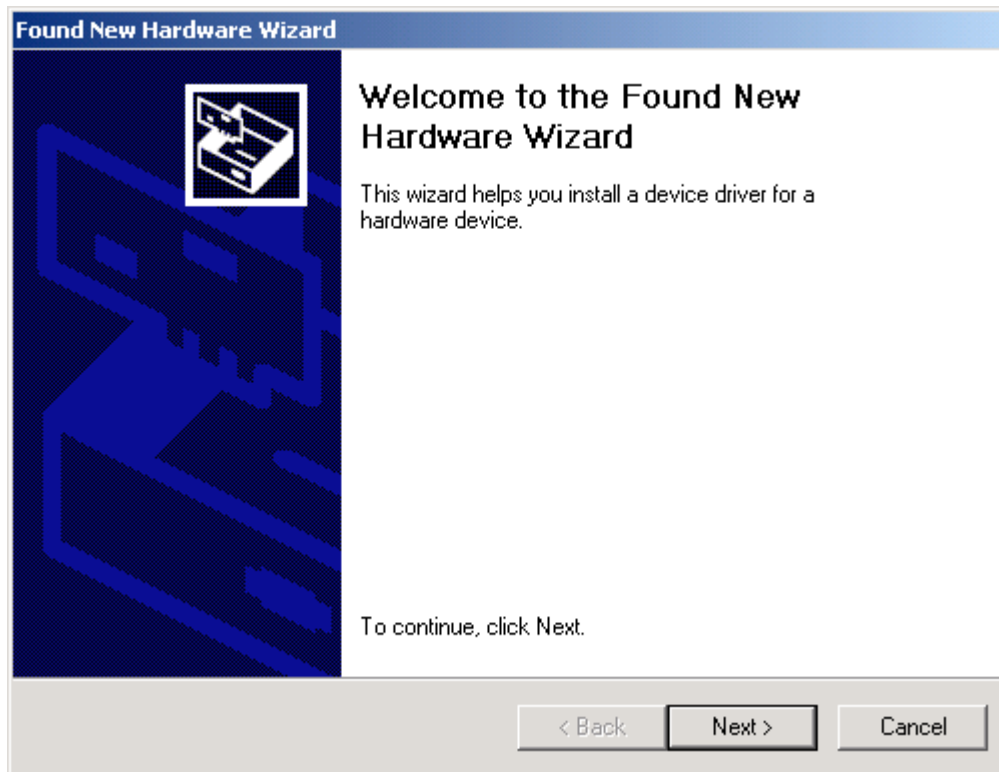
Uninstalling drivers

1. Plug in your iDEN USB data cable to the bottom connector of the phone and to the desired computer.
2. Click on "Start", then "Programs", then "Windows Explorer".
3. Browse to "Windows" under the folders section.
4. Open the "Windows" file and double click "INF".
5. Remove "Motorolacdciden.inf" and "Motorolamdmiden.inf" (2 files) by highlighting them and then press "Delete".
6. Right click on "My Computer" and select "Properties".
7. Select the Device Manager tab.
8. Expand the Universal Serial Bus Controller. (3 items listed)
9. Highlight "Motorola iDEN USB Modem" and click "Remove".
10. Click "Close" and disconnect the iDEN USB data cable and phone to finish uninstalling.

Windows 2000

When using Windows 2000, you will need to install the iDEN modem driver (mdmiden.inf).

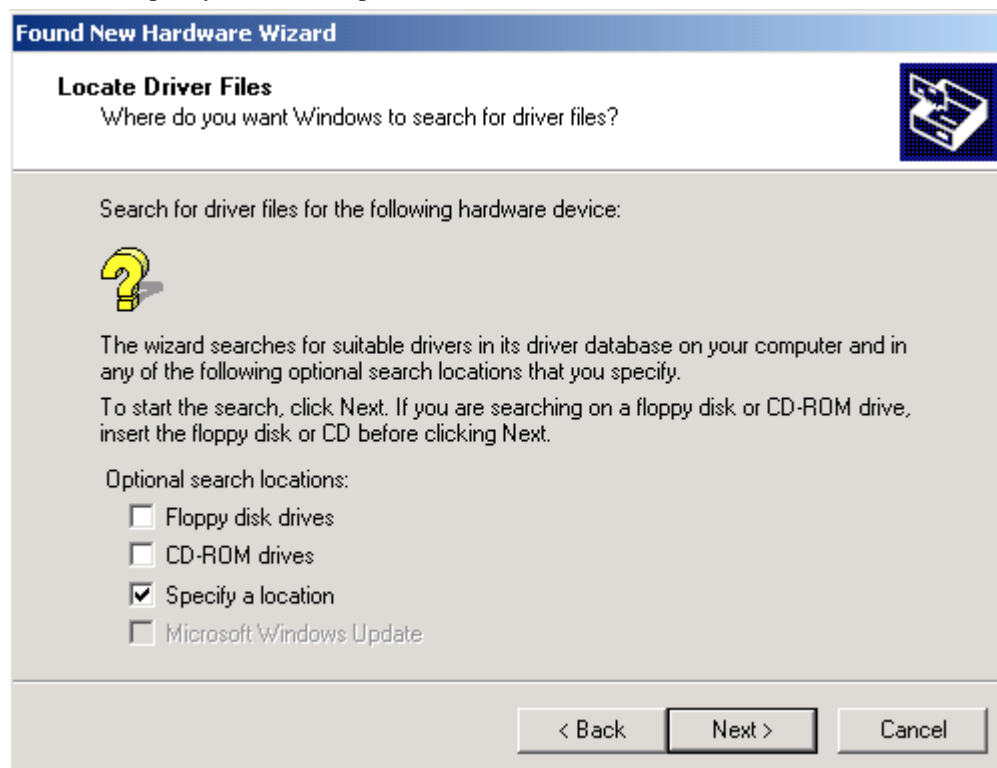
- (1) Plug in the iDEN USB data cable and phone to the bottom connector and to the desired computer. Windows will detect this new hardware. Click “Next” when the “Found New Hardware Wizard” Window appears.



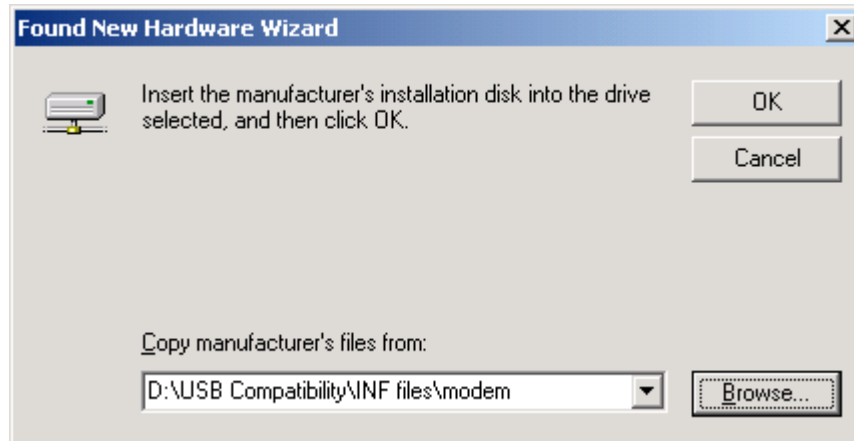
- (2) Choose the option “Search for a suitable driver...” and click “Next”.



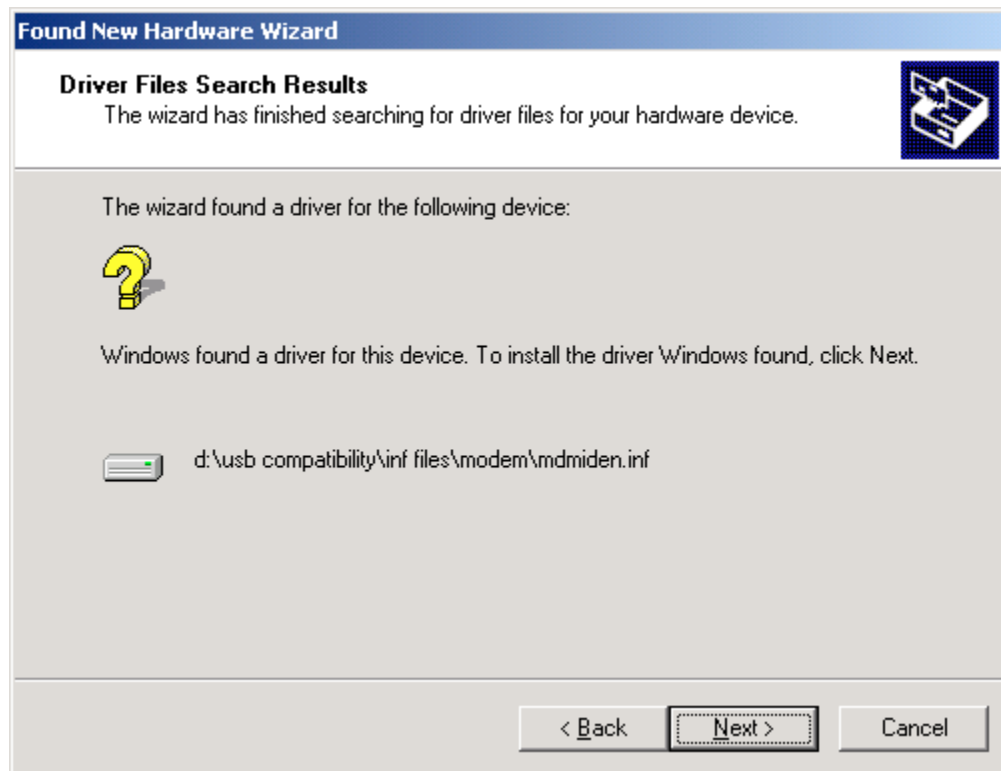
- (3) Check the “Specify a location” option and click “Next”.



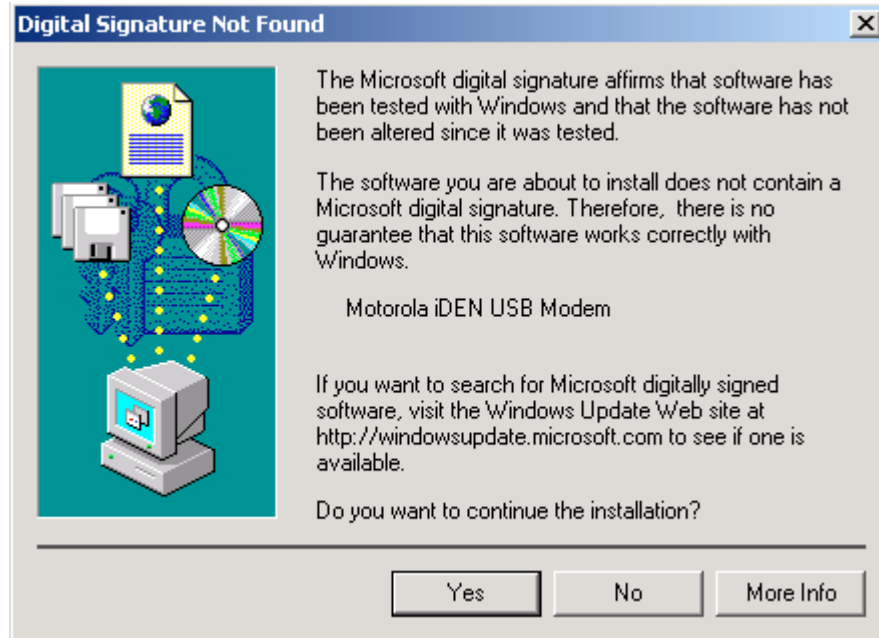
- (4) Type D:\USB Compatibility\INF Files\modem. This is where the mdmiden.inf file is located. Click “OK”.



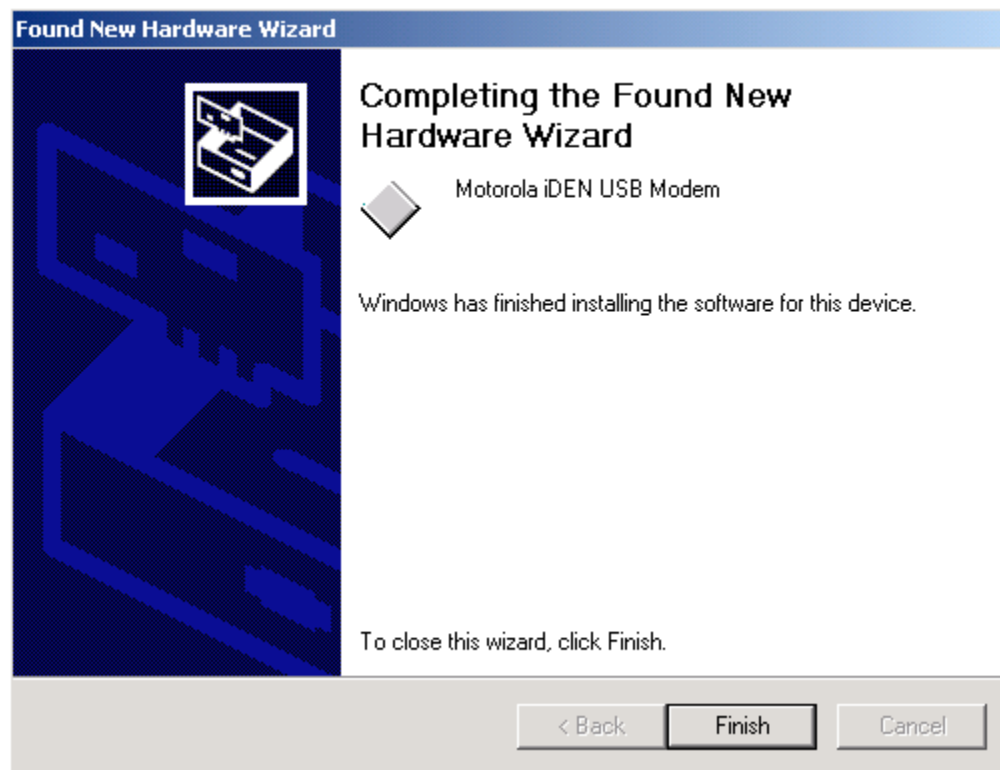
- (5) Click “Next”.



- (6) Click “Yes” on the “Digital Signature Not Found” Window to start the installation.

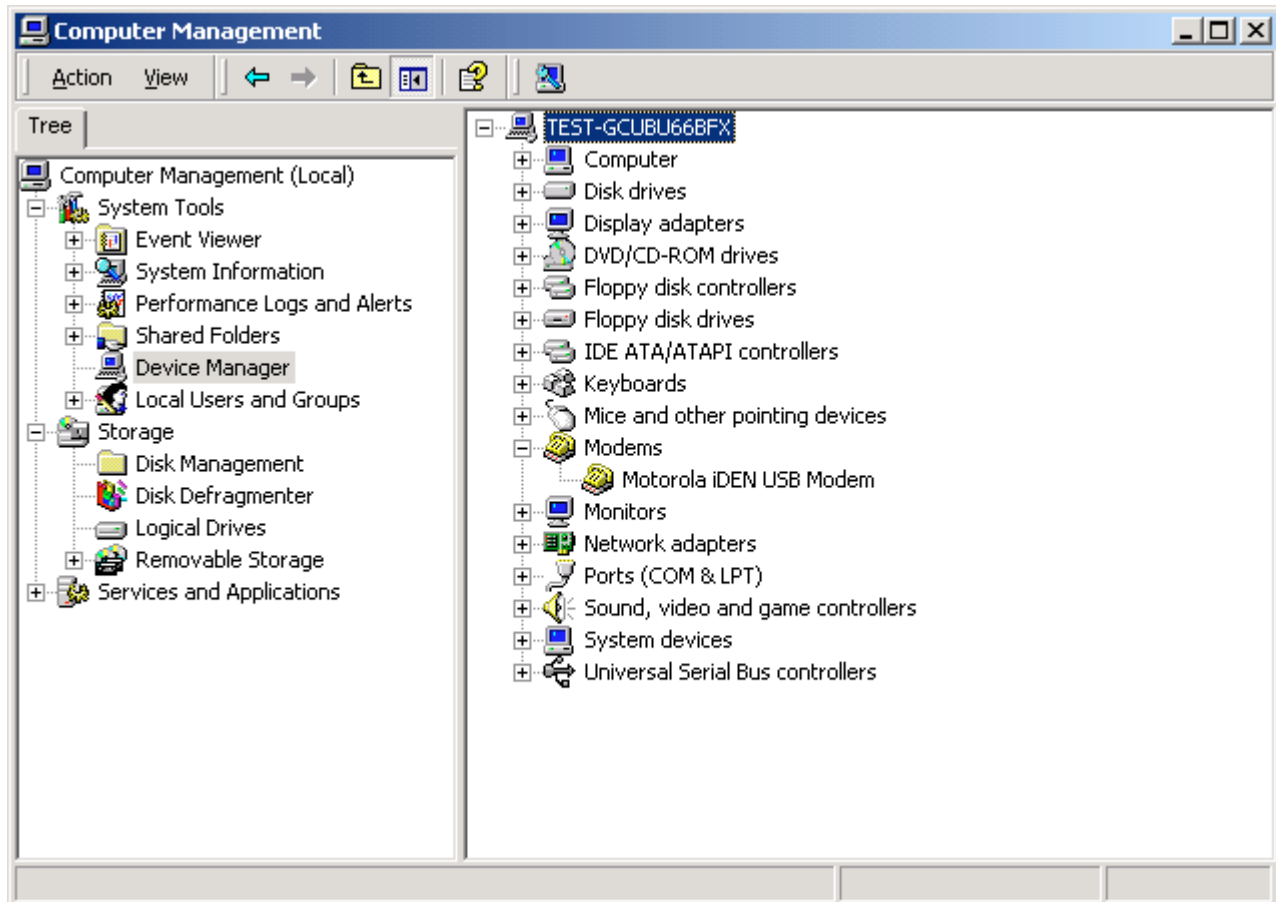


- (7) Click “Finish” to finish the modem installation.



Uninstalling drivers

1. Right click "My Computer" and select "Manage".
2. Click "Device Manager" under the Tree tab.
3. Click the "+" sign in front of "Modems" on the right side of the Computer Management Window.
4. Highlight "Motorola IDEN USB Modem" and press "Delete".
5. Close "Computer Management" Window and disconnect the IDEN USB data cable and phone to finish uninstalling.



Customer Care

Please access our web site at:

<http://www.motorola.com/iden/support>