

TABLE OF CONTENTS

1	Overview	1
	Introduction	1
	Features	1
	Launching the Application	2
	NetMetting on a WinFast Multimedia Device	2
	Switching between Modes	3
	Reading the Status Window	3
	Status Window in Video Input Mode	4
	Status Window in Video Playback Mode	4
	Status Window in FM Mode	5
	Status Window in FM Playback Mode	5
2	Video Input Mode	6
	Control Panel & Screen	6
	Control Panel	6
	WinFast PVR Screen	7
	Time-Shifting	8
	Introduction	8
	Control Panel & Screen	8
	How Time-Shifting Works	9
	EPG & TELETEXT	10
3	Video Playback Mode	11
	Control Panel & Screen	11
	Control Panel	11
	Picture-in-Picture Screen	12
4	FM Mode	14
	Control Panel	14
5	FM Playback Mode	15
	Control Panel	15
6	Software Settings	16
	Settings in Video Modes	16
	Overview	16
	Capture Setting	17
	Setting Capture Format	18
	DirectBurn	18
	Video Setting	19
	TV Channel List & Frequency Table	20
	Custom Defined Area	21
	TV Schedule	22
	Settings in FM Modes	23
	Overview	23
	Audio Setting	24
	FM Channel List	25
	FM Schedule	26
7	Other Controls	27
	Remote Control	27
	Hot Keys	31

Introduction

WinFast PVR/WinFast FM is a powerful and easy-to-use application provided by some WinFast multimedia products to provide the most feature-rich video/audio entertainment. The WinFast PVR application allows you to view and record live TV or video, and playback recorded TV or video in a picture-in-picture (PIP) style,

as well as control all available functions.

You can also listen to FM radio broadcasts under the FM mode if it is included in your purchase. (See the full features)

A complete WinFast PVR/WinFast FM application package provides all functions in 4 different modes for your entertainment pleasure:

Video Input mode
Video Playback mode
FM mode
FM Playback mode

The WinFast PVR/ WinFast FM application displays a virtual control panel under each mode as well as a resizable virtual screen for viewing TV or video.

Note: You must first install a WinFast capturing device and connect other external devices as described in the user's manual before you can enjoy the full capabilities of WinFast PVR/WinFast FM application.

✖ *If the FM related functions or netmeeting is not included in the product you purchased, please disregard descriptions on those subjects.*

Features

- ♦ Supports closed captioning.
- ♦ Supports MPEG1, MPEG2 codec, and MPEG4 compression format.
- ♦ Note: The MPEG4 codec can be downloaded from some websites for free. You can download the codec and use it in your capture format profile.
- ♦ Picture-in-picture screen with easy switch between main and sub screen.
- ♦ Time Shifting support that allows you to view recorded video when the recording is still in progress. Never again will you miss a second of your favorite show for taking a break to get the popcorn.
- ♦ Scheduler for pre-set recording and power-on.
- ♦ Remote control with TV-like power-on and off functions.
- ♦ DirectBurn allows you to record directly to VCD/DVD in real time.
- ♦ Delicately designed software saves time in running the applications.
- ♦ Unique Signal Indicator on the margin of screen.
- ♦ Multi-function and quick-response software supports MP3, MIDI and many other different kinds of image formats.
- ♦ Synchronously records live radio and plays recorded file.
- ♦ Allows ten preset FM channels.
- ♦ FM and TV applications can record the video and audio from any device connected with your capture card and sound card such as CD-ROM, VCR, camcorder, and a LD/VCD/DVD player.
- ♦ De-interlacing support for high quality video.



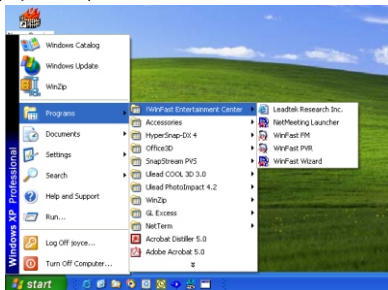
WinFast PVR with live TV playing




WinFast FM

As the WinFast PVR/FM application is successfully installed, shortcuts are added to provide several ways to launch the application. They are:

1. WinFast PVR shortcuts added to the Program list in **Start** menu. You can choose to launch **WinFast PVR**, **WinFast FM** (Optional), or **NetMeeting** (Optional).



2. The WinFast PVR icon () added in the system tray.

- ◆ To launch WinFast PVR immediately, double click the icon.
- ◆ To pop up a program menu, right click on the icon, a menu with 4 options appears as in the figure below:



Click **WinFast PVR** to launch the application in Input Mode.

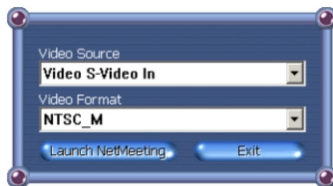
Click **WinFast FM** to launch the application in FM mode. (Optional)

Click **NetMeeting** to launch NetMeeting to output the video. (Optional)

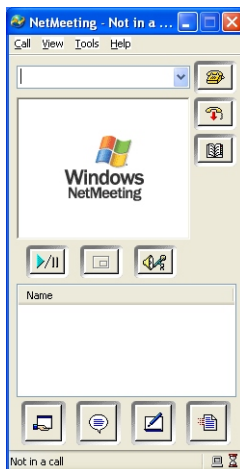
Click **Unload** to hide the icon.

You can open NetMeeting with the WinFast PVR application and output video using our excellent WinFast multimedia devices.

1. To use NetMeeting on a WinFast multimedia device, click the NetMeeting Launcher in the Start menu or in the system tray.
2. The NetMeeting Launcher control box appears as shown in the figure below.



3. Click the Launch NetMeeting button to start the NetMeeting program.



For how to use NetMeeting, refer to its online help or visit their support website.

4. The control box will remain on the screen for you to change the video source and video format if so desired.
5. Click the Exit button to close NetMeeting.

Switching between Modes

When you run the WinFast PVR application, the default is set to go in Input mode initially.

You can identify which mode you are currently in by reading the status window.

How to go in Video Input Mode

If you are currently in **FM mode** or **FM Playback mode**, click the **TV switch** on the control panel.

If you are currently in **Video Playback mode**, click the **Quit Playback Mode button** on the control panel.

How to Go in TV Playback Mode

If you are currently in **Video Input mode** and there is recording in progress, click the **Recording/Stop Recording button** on the control panel.

If you are currently in **Video Input mode** and there is no recording in progress, clicking the **Open Media File button** to play back a media file will also switch the system to **Video Playback mode**.

How to Go in FM Mode

When starting the application, you can choose to open the **WinFast FM** application instead of **WinFast PVR** in the **Start** menu to go directly into **FM mode** (see *Launching the Application*)

If you are currently in **Video Input mode** or **Video Playback mode**, click the **FM switch** on the control panel.

How to Go in FM Playback Mode

If you are currently in **FM mode** and there is recording in progress, click the **Recording/Stop Recording button** on the control panel.

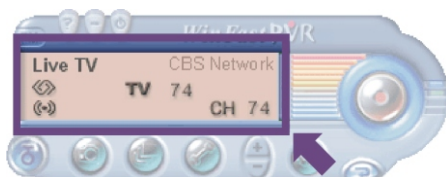
If you are currently in **FM mode** and there is no recording in progress, click the **Open File button** on the control panel to play back a recorded sound file will also bring

Reading the Status Window

Indications on the status screen give information concerning currently active mode. The following pages tell you how to read the status windows on the control panels.

What is a status window?

The Status window is the part of control panel that shows information on the current status (see the figure below).

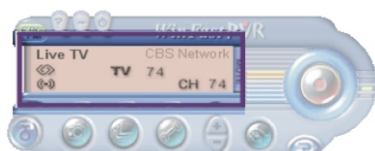


Video Input mode

There are 4 types of action in Video Input mode:

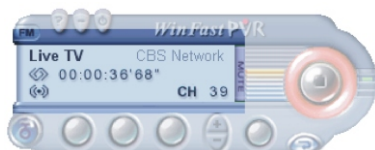
1. With no recording in progress
2. With recording in progress
3. With Time-Shifting standby
4. With Time-Shifting playback

With no recording in progress



Live TV	Indicates Live TV is playing
CBS Network	Channel Name
TV 74	Indicates the system is currently in TV mode and is broadcasting TV channel 74
CH 74	Channel Number
icon	SAP indicator (SUB indicator for Japan)
icon	Stereo indicator

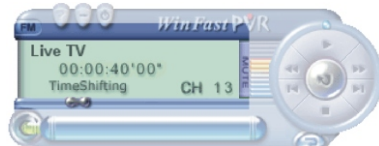
With recording in progress



Live TV	Indicates Live TV is playing
CBS Network	Channel Name
CH 39	Channel Number
00:00:36'68"	Length of recorded video of the ongoing recording
icon	SAP indicator (SUB indicator for Japan)
icon	Stereo indicator

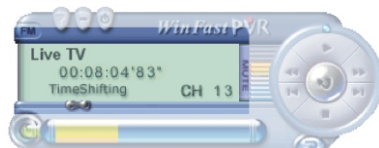
When running TimeShifting

-- Standby



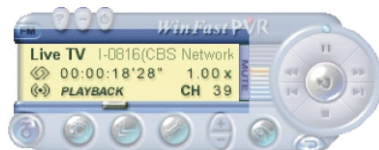
When running TimeShifting

-- Playback



Live TV	Indicates Live TV is playing
CH 13	Channel Number
00:00:40'00"	Length of recorded video of the ongoing TimeShifting recording
TimeShifting	Indicates the system is running TimeShifting
00:08:04'83"	Length of played video of the ongoing TimeShifting recording

Video Playback mode



Live TV	Indicates Live TV is playing
I-0816(CBS Network)	The media file name that is being played back
1.00 x	Playback rate
CH 39	Channel Number of the Live TV that's being broadcasted
00:00:18'28"	Length of played video of the ongoing playback
PLAYBACK	Indicates ongoing playback

FM mode

With no recording in progress



With recording in progress

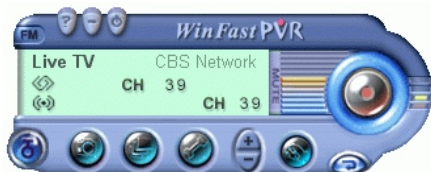


CH 11	Channel Number of the live FM radio broadcast
92.10 MHz	Frequency of the current live FM radio channel
UFO	Channel Name of the live FM radio broadcast
02:23:41 PM	Clock that tells time
REC	Indicates there is ongoing recording
011203142415.wav	Name of the sound file that is being recorded
0:03'86"	Length of recorded video of the ongoing recording
Icon	Playback indicator. If it lights blue, playback is in progress. If it shows two paralleled vertical lines, playback is being paused
Icon	Recording indicator. If it lights red, recording is in progress
Icon	Pause indicator. If the status shows this icon instead of , the playback of a recorded sound file is being paused

FM Playback mode



CH 11	[CH 11]:Channel Number of the live FM radio broadcast
92.10 MHz	[92.10 MHz]: Frequency of the current live FM radio channel
PLAY	[PLAY]: Indicates playback is in progress
011022152625.wav	[011022152625.wav] Name of the sound file that is being played back
0:01	[0:01'] Length of played video of the ongoing playback
Icon	Playback indicator. If it lights blue, playback is in progress. If it shows two paralleled vertical lines, playback is being paused
Icon	Recording indicator. If it lights red, recording is in progress
Icon	Pause indicator. If the status shows this icon instead of , the playback of a recorded sound file is being paused



WinFast PVR

About WinFast PVR

Pressing the button pops

up a box of manufacturer information. You may log on its website by clicking on the logo. Clicking on the box apart from the logo can dismiss it.

**Channel Up/Down**

Click to switch the channel up/down.

**Channel Surf**

Click to preview the channels. Click on the image to switch to the channel you want to watch.

**Configuration**

Click to open the setup dialog box.

**Exit WinFast PVR**

Click to close the application.

**FM Switch/EPG button**

Click to switch to the FM radio mode

**EPG**

In the areas where EPG is applied, the EPG button will replace the FM switch. Click to link to EPG provider website.

**Input Source**

Click to switch between the three input sources: TV, S-video and A/V.

**Mute**

Click to mute the audio.

**Minimize**

Click to minimize the application.

**Open Media File**

Click to open an explorer window to browse for the media file you want to play. Double click on the file to play.

**Record/Stop Recording**

When no recording is in progress, click to record the live TV broadcast. Click it again to stop the recording.

**Recording Indicator**

The ring surrounding the Record/Stop Recording button turns orange when recording is in progress.



Scanning for channels is the first thing you need to do when you use the application for the first time. Otherwise, no channels will be available for viewing. To scan for channels, go to the TV Channel List & Frequency Table dialog box.

Popup Menu of Video Input Mode Panel

Right click on the control panel to open this popup menu.

**Use Favorite Channel List**

Tick this option to surf only the favorite channels using the Channel Up/Down button.

Minimize

Click to minimize the control panel.

Explore WorkArea Folder

Click to open the WorkArea folder explorer and drag a saved media/snapshot file and drop it onto the virtual screen to play.

Mail Media FileClick to open a dialog box that asks you to type your mail browser name so the WinFast PVR can open it and use it to mail the media file you want to send. **Note** that this option will be available only if some recording has been done after you started WinFast PVR this time.**Mail Snapshot File**

Same as the Mail Media File function except that this option mails snapshot files.

**Snapshot**

Click to take a snapshot and save it as a .bmp (a .jpg file in Windows XP).

**Volume**

Click on a level to change the volume, which is indicated by colors, ranging from blue (low) to red (high).

**WinFast PVR/FM Help**

Click to open the online help.

**Time-Shifting button**

Click to run Time-Shifting.

WinFast PVR Screen



Exit WinFast PVR
Click to close the application.

Minimize
Click to harbor the control panel on the toolbar. Only the [CH-], [CH+] and [Vol] (volume) buttons remain on the bottom left corner of the screen as shown in the figure below.



Signal Indicator
The round objects in the four corners of the screen are signal indicators that blink when any button on the remote control is pressed.

Popup menu on the screen

Right click on the virtual screen to open this popup menu.



Video As Desktop Background

Tick this option to display the video as the desktop background.

Note:

1. This function is available only when the **Lock Web Items on Desktop** option in the desktop popup menu is ticked (see the figure below). To open this popup menu, right click on your desktop.



2. The playback media file can not be displayed as active desktop.

For the rest of the options, please refer to page 13.

Introduction

Time Shifting is a type of recording that enables you to view, rewind or stop the playback of recorded video when its recording is still in progress. This function is used mainly when the viewing of a TV broadcast is interrupted and you do not want to miss any of it. By clicking the Time Shifting button, you start recording the TV broadcast; when you return, you can choose to view the part you have missed or search for what you want to view with the TV broadcast is still playing in

the sub-screen and the recording still continues.

To run Time-Shifting, click the Time-Shifting button on the TV control panel, and then the control panel transforms and the Time-Shifting recording begins.

The Time-Shifting recording quality can be set using Time-Shifting Quality Setting selection box in the Video Setting dialog box.

Control Panel & Screen



***For controls identical with those on the control panel of Video Input mode, refer back to that section.**

Main Screen

The main screen shows the Time-Shifting playback as the default. You can switch the main and sub-screens by double-clicking on the sub-screen.

Sub-screen

The sub-screen shows live TV as the default. To switch the main and sub-screens, double-click on the sub-screen. To remove the sub-screen, right click on the main or sub-screen and untick the Picture-in-Picture option on the pop-up menu.



Go to the Beginning/End

Click to start playing back from the beginning/end of the Time-Shifting recording.



Play/Pause

Click to start/pause the Time-Shifting playback.



Quit Time-Shifting

Click this button to exit Time-Shifting and return to TV mode with only the input video on the screen.



Rewind/Fast forward

Click these buttons to rewind or fast forward the Time-Shifting playback. The rewind/fast forward speed increases by 4 seconds with each click.



Stop Playback

Click to stop the Time-Shifting playback (as the recording continues).



Speed Control Knob

The knob moves in rotary motion. When it is turned clockwise, the playback speeds up; when turned counter-clockwise, slows down.



Playback Slider Knob

The slider knob indicates the progress of current Time-Shifting playback. You can move it to control the playback freely.



Progress Indicator Bar

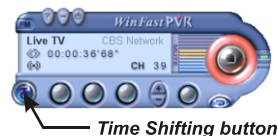
The blue part of the bar represents the entire length of the recording as the yellow part shows the progress of the playback. Point the mouse arrow at the blue part to read an information box that shows you the current length of the recording.

How Time-Shifting Works

The figure below shows the steps of how to use the Time-Shifting function.



Click the Time Shifting button



Time Shifting button

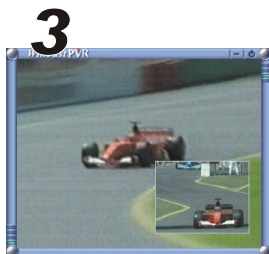
In Video Input mode, the screen is playing live TV.



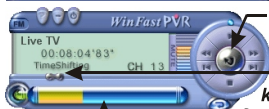
Play button

Playback/recording progress indicator

The control panel transforms. A playback/recording progress indicator (the bar like object) appears. The screen shows live TV. Recording is in progress.



Click the Play button



Click the Quit Playback Mode button

Drag the knob to search for the part you want to view

Playback progress

The playback is on the main screen, and live TV is on the sub screen; recording is still in progress. The progress indicator starts showing the progress of the playback.



The recording and playback are stopped. The control panel transforms back to Video Input mode. Live TV is on the screen.

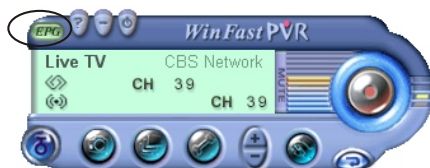
TELETEXT(Optional)

In areas where Teletext is provided by the local TV station, you could click the "Teletext" on the top of the TV screen or press the "Teletext" button on your remote control to turn on this function. (In the areas where Teletext is not available, "Teletext" button will not be shown on the top of the TV screen.)



EPG-Electronic Program Guide(Optional)

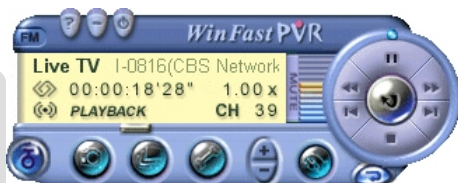
In areas where Electronic Program Guide is applied, you could use this function by clicking on the "EPG" button on the left top of the Control Panel. Users can view channel lists and set recordings directly into WinFast PVR via the online channel guide. (In the areas where EPG is not available, "Teletext" button will not be shown on the top of the Control Panel.)



In Video Playback mode, you can playback recorded TV or video from an external device while live TV is still playing on the screen in

the picture-in-picture (PIP) style. This section includes the following topics:

Control Panel



**For controls identical with those on the control panel of Video Input mode, refer back to that section.*



Channel Up/Down

Click to switch the live TV channel up or down.



Last/Next File

Click these buttons to switch the playback to the last or next file saved on the hard drive.



Play/Pause

Click to start/pause the playback.



Quit Playback Mode

Click this button to exit playback mode.



Playback Slider Knob

The slider knob indicates the progress of current playback. You can move it to control the playback freely.



Rewind/Fast forward

Click these buttons to rewind or fast forward the playback. The rewind/fast forward speed increases by 1x, 2x, and 4x with each click.



Snapshot

Click to take a snapshot of the current video input and save it as a .bmp file (a .jpg file in Windows XP).



Stop Playback

Click to stop the ongoing playback.



Speed Control Knob

The knob moves in rotary motion. When it is turned right (clockwise), the playback goes faster than normal; when it is turned left (counter-clockwise), slower.

Popup Menu of Video Playback Control Panel



Use Favorite Channel List

Tick this option to surf only the favorite channels using the Channel Up/Down button.

Minimize

Click to minimize the control panel.

Explore WorkArea Folder

Click to open the WorkArea folder explorer and drag a saved media/snapshot file and drop it onto the virtual screen to play.

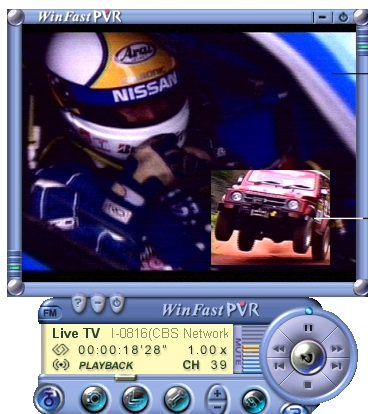
Mail Media File

Click to open a dialog box that asks you to type your mail browser name so the WinFast PVR can open it and use it to mail the media file you want to send. Note that this option will only be available if some recording has been done after you started WinFast PVR this time.

Mail Snapshot File

Click to open a dialog box that asks you to type your mail browser name so the WinFast PVR can open it and use it to mail the snapshot file you wish to send. Note that this option will be available only if at least one snapshot has been taken after you opened WinFast PVR this time.

Picture-in-Picture Screen

**Main Screen**

The main screen shows the playback. The main screen and sub-screen can swap using the Switch Screens function.


Sub Screen


The sub screen plays the video from the input source. The main screen and sub-screen can swap using the Switch Screens function.

As shown in the figure below, you can move the sub-screen (even out of the main screen) and resize it at will.



 **Exit WinFast PVR**
Click to close the application.

 **Minimize**
Click to harbor the control panel on the toolbar.

 **Signal Indicator**
The round objects in the four corners of the screen are signal indicators that blink when any button on the remote control is pressed.

Switching Screens on PIP

There are two ways to swap the video on the main screen and sub-screen:

1. You can make such a switch by double clicking on the sub-screen of the application.
2. Right click on the virtual screen and select Switch Screens from the popup menu.



Popup Menu of Video Playback Screen

Right click on the virtual screen to open the popup menu as shown in the figure below.



Always on Top

Tick this item to keep WinFast PVR always on top of all other active applications.

Fullscreen

Tick this item to view TV in fullscreen.

Minimize

Tick this item to minimize WinFast PVR and harbor it on the toolbar.

Picture-in-Picture

Tick this option to display the playback and live TV in picture-in-picture style. If this option is not selected, playback mode will only display the playback video and the sub-screen will disappear.

Switch Screens

Tick this option to switch the video in main screen and sub-screen, and display live TV in the main screen and playback in the sub-screen.

Force Ratio to 4:3

Tick this item to keep the width and height ratio of the screen at 4:3.

Force Ratio to 16:9

Tick this item to keep the width and height ratio of the screen at 16:9.

Overlay Mode

Whether the overlay works or not depends on the type of VGA card you use. Some VGA cards render video degradation under this mode. Should such a problem occur, untick this option. This item is not available on Windows XP.

You can listen to live FM radio broadcasts in FM mode.

For controls identical with those of Video Input Mode, refer back to that section.



WinFast FM About WinFast FM

Press the hotspot to pop up an information box. Click on the Leadtek logo to log on its website.



Channel Slider

You can slide the knob left and right to surf through all frequencies.



Channel Up/Down

Click to switch the channel up/down the active favorite channel group.



Configuration

Click to open the WinFast FM setup dialog box of 3 tabs.

Open File

Click to browse for a recorded file you wish to play.



Favorite Channels

Click one of the 10 buttons to listen to a preset favorite channel.



Find Previous/Next Channel

Click to switch to the previous/ next channel available on the channel list.



Fine Tune

Click these two buttons to fine tune a channel by 0.05 MHz each click.



Open Playback Panel

Click to go in FM Playback mode.



Record/Stop Recording

When no recording is in progress, click this button to record the current live FM radio broadcast. Click it again to stop the recording.



Recording Indicator

This ring turns orange as in the figure below when recording is in progress.

Switch to TV



Click to switch to Video Input mode.



Scanning for channels is the first thing you need to do when you use the application for the first time. Otherwise, there will not be any channels available for viewing. To scan for channels, go to the FM Channel List setup box.



Add a New Channel

Clicking this button to pop up the dialog box as shown in the figure below.



Name:

You can name the channel as desired.

Frequency:

Type the frequency of the channel, you can type it in this field.

Preset:

Type a number between 0-9 that will be the number of the favorite channel button.

Use Favorite Channel Group

Right click on the FM control panel to open a popup menu as shown in the figure below. Click **Use Favorite Channel**

Group and a submenu appears with 4 options: **All Channel**, **Group 1**, **Group 2**, and **Group 3**. Tick one of the four options to use a certain group of previously set favorite channels. Only channels in the selected group will be available when switching the channel up and down.



FM Playback mode enables you to play audio files recorded from FM radio.

For controls identical with those of FM mode, refer back to that section.



Channel Slider knob

You can slide the knob left and right to surf through all frequencies of live FM radio.

Playback Slider Knob

Pull the knob left or right to control the playback progress. It is very useful when you wish to search for a certain part of the recording.

Channel Up/Down

Click to switch the channel up or down the currently active favorite channel group of live radio.

Close Playback Panel

Click this button to go back in FM mode.

Favorite Channels

Click one of the 10 buttons to switch to that preset favorite channel of live radio.

Find Previous/Next Channel

Click to switch to the previous or next channel available on the channel list.

Fine Tune

Click these two buttons to fine tune a channel by 0.05 MHz each click.

Mute Playback

Click to mute the audio of the sound file being played back.

Mute Live Radio

Click to mute the audio of the live FM radio that's being broadcasted.

Play/Pause

When playback is in progress, click this button to pause the playback. Click it again to continue the playback again.

Previous/Next File

Click these buttons to switch the playback to the last or next file saved on the hard drive.

Stop Playback

Click this button to stop the playback.

Overview

In Video Input or Video playback mode, click the Configuration button on the control panel and a 4-tabbed dialog box as shown in the figure below will appear on the screen. Under the four tabs are setting panels for

- Capture Setting
- Video Setting
- TV Channel List & Frequency Table
- TV Schedule



Scanning for channels is the first thing you need to do when you use the application for the first time. Otherwise, there will not be any channels available for viewing. To scan for channels, go to the TV Channel List & Frequency Table dialog box.



Capture Setting

The Capture Setting tab is the first tab from the left. It is the default page of the configuration dialog box after clicking the Configuration button on the control panel, which is for setting up the properties of the devices.

Video Setting

The second tab from the left is the Video Setting tab. Click this tab to call the Video Setting dialog box on top and set up the video and audio quality in Video Input mode and Video playback mode.

TV Channel List & Frequency Table

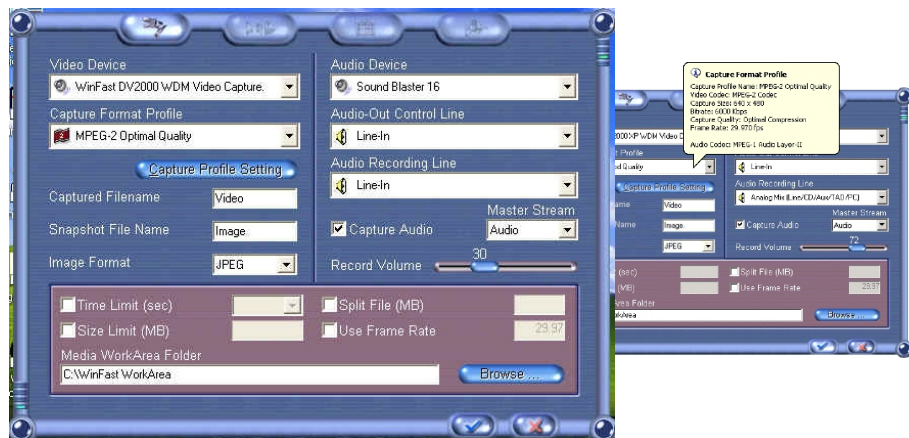
The third tab from the left is the Channel List & Frequency Table tab. Click this tab to open this dialog box and scan for available channels and set up tuner related properties.

TV Schedule

The last tab is the Schedule tab. Click this tab to call the Schedule dialog box on top and schedule an event or change a scheduled event.

Capture Setting

Click on the first tab to open the TV Capture Setting dialog box as shown in the figure below.



[Capture Format Profile]

Move the mouse arrow to this area to view the detailed information on the format profile you currently use in a balloon as shown in the figure above. See the description of the Capture Profile Setting button in this dialog box for how to determine the profile.

[Capture Profile Setting] button

Click this button to open a sub-panel for setting the capture profile. (See next page.)

[Audio Recording Line]

When recording a TV broadcast, you can choose to record audio from other sources to dub the original TV audio. Click on the arrow to select an audio recording line as desired.

[Master Stream]

Select an option from the drop-down list to prioritize a type of output data transmission during heavy traffic.

[Split File]

Check this box if you want to save a recording in several files. This function is used when the video is very long.

[Use Frame Rate]

Frame rate is adjustable from 1 to 30. The normal rate is 30.

[Record Volume]

Slide the knob to turn up/down the volume. What is set here will affect the playback volume.

To prevent noise during the playback, turn down the volume while recording to avoid your sound card to over amplify.

Recording Limits

Set either Time Limit or Size Limit for recording. If you tick both, the recording will stop when one of the limits is reached.

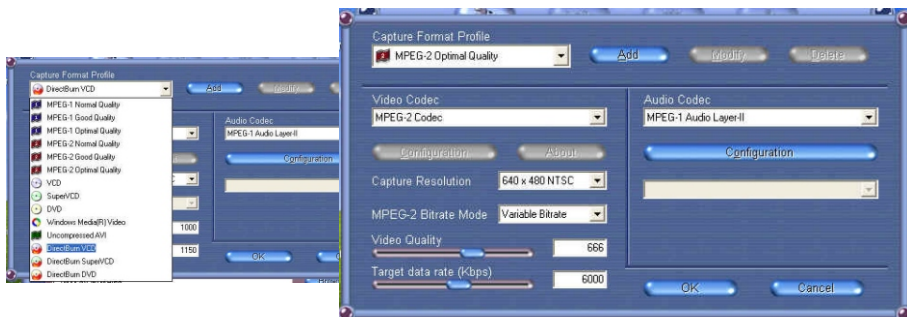
Note: If neither is set, a recording will continue until the neither hard drive is full. Yet hard drive segments determine how big each media file would be. When a segment is full, the data recorded in the segment will be saved as a file. As the recording carries on, it will be saved in the next segment as another file. A hard drive segment of FAT 16 is 2 GB; of FAT32, 4 GB. An NTFS hard drive is not divided into segments. Continuous recording on an NTFS hard drive will be saved as one big file.

[Media WorkArea Folder]

Type in or browse for the directory for saving the recorded media files. All recorded media files will be saved in the directory.

Setting Capture Format

On the Capture Setting dialog box (see the last page) click the **Capture Profile Setting** button to open the following setting dialog box.



[Capture Format Profile]

Click on the arrow to select a profile from the drop-down list. There are 16 profiles built in the program which cannot be changed. If you wish to use a different set of format, click the Add button to save the set of settings to the profile list.

[Add]:

Click to save a set of settings and add it as a profile to the Capture Format Profile list in the drop down menu.

[DirectBurn]:

Select "DirectBurn DVD", "DirectBurn SuperVCD" or "DirectBurn VCD" from the drop-down list in the Capture Format Profile to use this function.

✱ **"DirectBurn Function" requires respective CD or DVD burner:**

DirectBurn DVD-

DVD+R/RW or DVD-R/RW

DirectBurn VCD-

DirectBurn SuperVCD-

CD-R/RW, DVD+R/RW or DVD-R/RW

[Modify]:

Click this button to change the set of settings of the selected profile. Note that the 16 built-in profiles are not available for modification.

[Delete]:

Click this button to delete the selected profile from the drop down menu. Note that the 16 built-in profiles are not available for deletion.

[Capture Resolution]:

Select an option from the drop-down list to set up your desired capture resolution.

[MPEG- 2 Bitrate Mode]:

Under MPEG-2 Bitrate formats you could select either variable bitrate or constant bitrate.

[Video Quality]

Pull the knob to adjust the video quality. Note that better quality takes up more hard drive space.

[Video and Audio Codec]

All available formats are listed. We suggest that you use a compressed format for recording.

Video Setting

Click on the second tab to open the Video Setting dialog box as shown in the figure below.



[Default]

Click this button to set the system to use the default parameters.

[Color Scheme]

You can save a set of color settings as a color scheme with a name as desired.

[Video Standard]

When the input source is S-Video or CVBS, select the video standard used by your input device.

When the video input source is cable, this option is fixed and can not be changed.

[Closed Captioning]

If your TV system supports closed captioning, tick it to activate it.

[Overlay Mode]

Whether the overlay works or not depends on the type of VGA card you use. Some VGA cards render video degradation under this mode. Should such a problem occur, untick this option.

[Time-Shifting Quality Setting]

Click the arrow and select a resolution/quality option from the drop-down list. Resolutions available for Time-Shifting quality are determined by your system capability; when the video jiggles or drops frames, you need to lower the resolution/quality set here.

Note: Compression format used in the Time-Shifting recording is set at MPEG1 format.

Preview Window

The window shows the preview under the settings done in this dialog box so that you can see the changes as you make adjustments to the settings.

TV Channel List & Frequency Table

Click on the third tab to open the Channel List & Frequency Table dialog box as shown in the figure below.



Move Channel(s) up the List

Select one or more channels and then click this button to move those channels up the list.

Default Channel Orders

Click this button to return the channel orders as they were originally scanned.

Move Channel(s) down the List

Select one or more channels and then click this button to move those channels down the list.

[Auto Fine Tune]

Tick this option to automatically fine tune for the best frequencies while scanning for channels.

[Clear All]

Click this button to remove all available channels from the list. After doing so, there will be no TV channels available for viewing.

[Country]

Choose the country where you are from the drop down list to help the system tune in the channels at the precise frequencies and quickly discern the video standards.

[Scan Channels]

Click this button to start scanning for all available channels.

[Adaptive Channel Scanning]

See Custom Defined Area.

Favorite channels

Favorite channels are marked with a '+' in a heart shaped icon. When you surf through the channels by clicking the Channel Up/Down button, only these channels are available and those marked with a '-' in a spade shaped icon will be skipped.

Adding/removing a favorite channel

Right click on a channel name and a popup menu appears. You can add or remove this channel as a favorite channel. Once there is a channel added as a favorite channel, the only channels accessible will be limited to those set as favorite channels.

Channels that have been set as favorite channels are marked with a '+' in a heart shaped icon. Those that have not, a '-' in a spade shaped icon.

Available channels

The boxes in front of channels found during scanning are checked.

Renaming a Channel

You can click on a channel name to rename it as you do in any Windows explorer. You can also change a channel name by selecting 'Edit this channel name' in the popup menu from right clicking on the name.

Custom Defined Area

Tick the Adaptive Channel Scanning box below the channel list to perform Adaptive Channel Scanning while scanning for channels. It will take approximately 5 to 10 minutes. You will not miss any channel with this function activated. But the channels already available may be listed again but as different channels. The channel numbers of the originally available channels may be scrambled.

Once Adaptive Channel Scanning is performed, Custom Defined is automatically selected in the Area box, i.e., the adaptive channels are listed as the Custom Defined Area.



TV Schedule

[Schedule]

All scheduled events are listed with their starting time, ending time, channel name, lapse time and capture format.

[Add] button

Click this button to open the TV Schedule Setting dialog box as below and add a new event.

[Edit] button

Select an event and then click this button to change its settings in the TV Schedule Setting dialog box.

[Delete] button

Select an event and then click this button to remove an event.



TV Schedule Setting

[Action]

When scheduling an event, select from the options provided here, TV Record, TV Show, CVBS Record, Video Record.

[Channel]

Select a channel from the drop-down list of the event being scheduled.

[Capture Format Profile]

Select a capture format profile from the down list for the recording. To create a profile, please go to the Capture box.

[MTS]

Select a sound system for the event. This function is only available when the MTS module is included in your purchase.

[Captured Filename]

Type in the box your desired name of the recorded program.

[Duration]

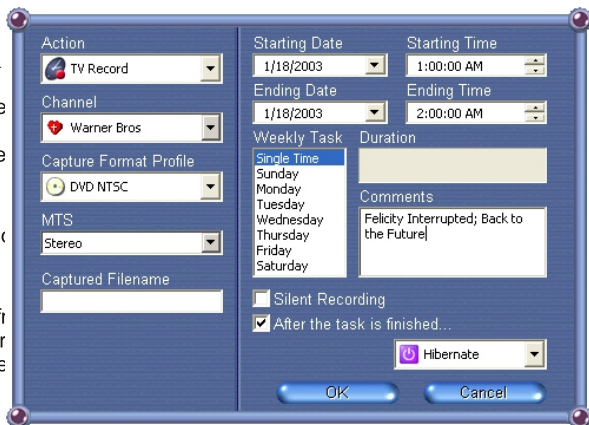
The length of the scheduled event.

[Weekly Task]

You can set an weekly event to record or show a certain TV program for your choice of period of time.

Starting/Ending Time

You can preset the time of starting and ending of the recording and initializing live TV by clicking the arrow in square.



[Comments]

You can type in the program name, comments, or notes as desired. Information input here often serves as a reminder.

[After the task is finished]

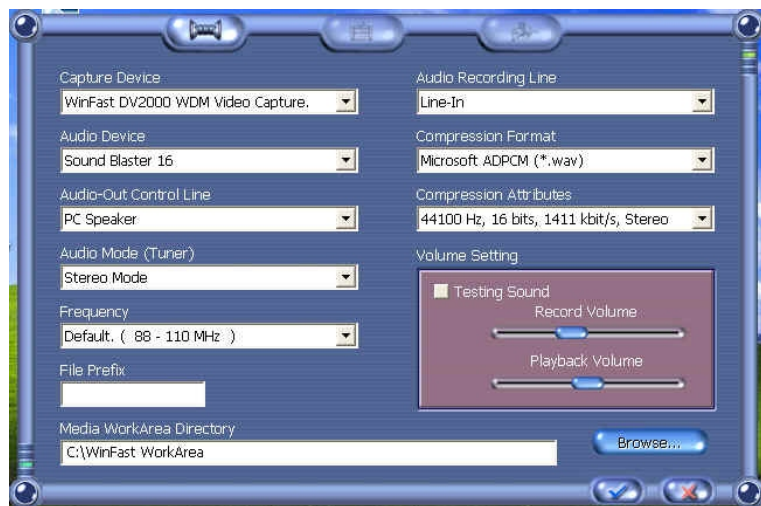
Tick this option to have your computer automatically execute your preferred action after the scheduled event is completed. You can choose the following options: Log off, Turn off monitor, Standby or Hibernate.

Note: Under Standby or Hibernate mode, the computer will automatically wake up for pre-scheduled events.

Overview

In FM or FM playback mode, click the Configuration button on the control panel and

a 3-tabbed dialog box as shown in the figure below will appear on the screen.



Audio Setting

The Audio Setting tab is the first tab from the left. It is the default page of the configuration dialog box after clicking the Configuration button on the control panel, which is for setting up the properties of the devices.

FM Channel List

The second tab from the left is the FM Channel List tab. Click this tab to call the FM Channel List dialog box on the top and scan for available channels and set up channel related properties.

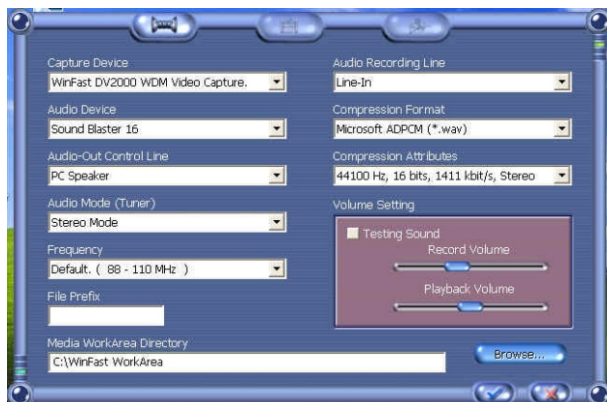
FM Schedule

The last tab is the FM Schedule tab. Click this tab to call the FM Schedule dialog box on top and schedule an event for change a scheduled event.

Scanning for channels is the first thing you need to do when you use the application for the first time. Otherwise, there will not be any channels available for listening. To scan for channels, go to the FM Channel

Audio Setting

Click on the first tab to open the Audio Setting dialog box as shown in the figure below.



[Compression Format]

The compression under the format of PCM will generate a better sound effect but take up bigger hard disk space than MP3, whose quality is inferior.

[Compression Attributes]

The bigger value you select the better sound quality the compressed file will be.

[File Prefix]

Type in the box the prefix of the file names of your desire. For example, if you type "music" in the box, the recorded file names will be "music 1", "music 2", "music 3", etc.

[Media WorkArea Directory]

Type in or browse for the path for saving the recorded sound files. All recorded files will be saved at this directory. If you would like to open them, please go to the directory and then open the file you need.

[Volume Setting]

The higher volume you adjust to, the bigger sound output the file will be while being played.

FM Channel List

Click on the second tab to open the FM Channel List dialog box as shown in the figure below.



[Auto Scan]

[Sensitivity] Sliding knob:

You can set the sensitivity of the scanning by changing the sensitivity level between 1 and 3. If it is set too high, noise can be mistaken as a radio station.

[Scan] button:

Click the button to start scanning for all available channels.

[Stop] button:

Click to stop the scanning.

[Progress bar]:

Shows the progress of scanning.

[Edit]

Highlight a channel and click this button to edit the channel name.

[Delete]

Select a channel and click this button to delete it from the channel list.

[Save]

Click this button after making any changes to save them.

[Set Favorite Channel Group]

Right click on a channel to bring up a pop-up menu as shown in the figure. You can click **Set Favorite Channel Group** to categorize the channel in a certain group which is indicated in the heart-shaped icons as 1, 2 or 3.

[Insert]

Highlight a channel and click this button to open the Setting Favorite Channel dialog box as shown in the figure below.



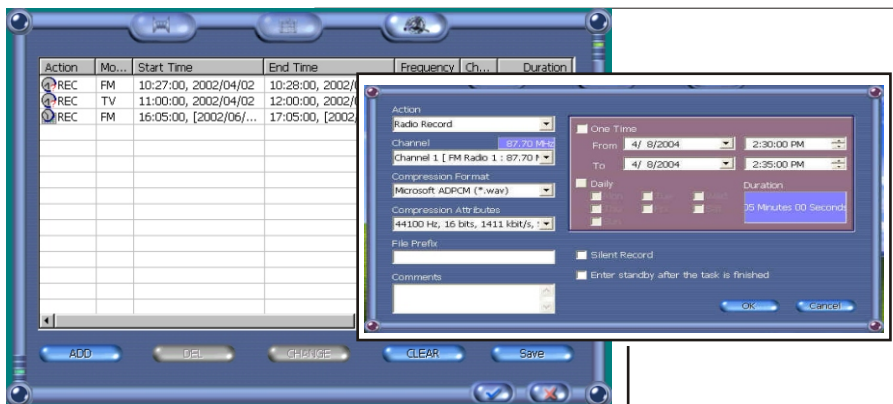
[Name]: You can name the channel as desired.

[Frequency]: If you know the frequency of the channel, you can type it in this field.

[Preset]: The number set here will be that of the favorite channel button on the control panel.

FM Schedule

Click on the third tab to open the FM Schedule dialog box as shown in the figure below.



Schedule Table

All scheduled events are listed here with its references: starting time, ending time, channel number, duration and comments.

[ADD]

Click to open the Schedule Setting dialog box and add a new event.

[DEL]

Highlight an event on the schedule table and click this button to delete it.

[CHANGE]

Highlight an event on the schedule table and click this button to make changes to its event details.

[CLEAR]

Click this button to clear the schedule table and delete all events.

[Save]

Click the button to save any addition or changes.

FM Schedule Setting

Click the Add button in the main FM Schedule dialog box to open this dialog as shown in the figure in the box.

[Action]

When scheduling an event, select an action from the options provided here, which include: Radio Record and Radio Show.

[Channel]

Select a channel from the drop down list for the event being scheduled.

[Compression Format]

Select a compression format from the drop down list for the recording.

[Compression Attributes]

The bigger value you select the better sound quality the compressed file will be.

[File Prefix]

Type in the box the prefix of the file names of your desire. For example, if you type "music" in the box, the recorded file names will be "music 1", "music 2", "music 3", etc.

[Comments]

You can type in the program name, comments, or notes as desired. Information input here often serves as a reminder.

[Time]

You can schedule a single recording or power-on event or set it as an weekly event.

[Silent Record]

Tick this option to set a scheduled recording to proceed silently.

[Enter standby after the task is finished]

Tick this option to enter standby mode after the scheduled event is completed.

Power:

Press to open/close the WinFast TV/FM application.

MTS:

Press to switch between SAP, Stereo, and Mono on NTSC for users in USA and Taiwan; and between PAL I and PAL DK on PAL for users in China.

CH+:

Press to switch the channel up.

VOL-:

Press to decrease the volume.

Full Screen:

Press to display the video full-screen.

Teletext/c.c.:

In areas where Teletext and/or close-captioning is provided by the local cable company, press this button to switch between or turn on/off whichever functions that are available.

Teletext selection:

Valid when Teletext is available (see the last entry). The colors of the button outlines correspond with those of the button of the TV screen. Press a button to select that category.

Numeric keys:

For entering a TV channel number or radio frequency to switch to that channel.

Enter:

Press after entering a TV channel number or FM frequency to switch to that channel.

Next/Back:

When selecting one file to play back, press these buttons to rewind/fast forward. When selecting more than one file to playback, press to jump to the previous/next file.

Stop:

Press to stop the playback or recording.

TV/FM:

Press to switch between Video Input mode and FM mode.

Video:

Change the input source in Video Input mode.

Display:

Display the current channel number on the screen.

VOL+:

Press to increase the volume.

CH-:

Switch the channel down.

Sleep:

Press to select a sleep mode. Once to set the timer at 30 minutes; twice, 60; thrice, 90; four times, 120; five times, sleep mode off. Keep pressing this button will alternate the mode in the same order.

Boss Key:

Hide the application.

Mute:

Press to mute the audio.

Fine Tune:

Fine tune the frequency for better reception of live TV or FM radio.

PIP:

Press to switch between picture-in-picture display and single display.

Recall:

Press to switch to the channel last viewed.

Time-Shifting:

Press to switch on/off Time Shifting (the control panel will transform accordingly).

Snapshot/M:

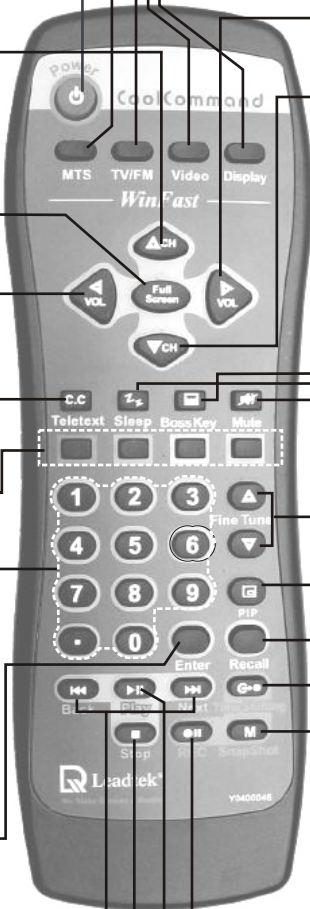
In Video input mode, press to take a snapshot; in FM mode, to add the current channel to the channel list.

REC:

Press to start recording (Pause function is currently unavailable).

Play/Pause:

Press to start or pause the playback.



WinFast PVR Function

TV:

Press to open WinFast PVR (TV/Video Input mode).

Teletext Selection:

Valid when Teletext is available. The colors of the button outlines correspond with those of the TV screen. Press a button to select that category.

Power:

Press to open/close the WinFast PVR application.

Sleep:

Press to select a sleep mode. Once to set the timer at 30 minutes; twice, 60; thrice, 90; four times, 120; five times, sleep mode off. Keep pressing this button will alternate the mode in the same order.

Teletext/c.c.:

In areas where Teletext and/or close-captioning is provided by the local cable company, press this button to switch between or turn on/off whichever functions that are available

Cancel:

Press to cancel the selection or close the dialog box.

VOL-:

Press to decrease the volume.

DVD Menu(DVD function key):

Press to enter DVD menu.

CH-:

Switch the channel down.

Previous/Next:

Press these buttons to jump to previous/next selection.

Play/Pause:

Press to start or pause the playback.

Rewind/Fast Forward:

Press these buttons to rewind/fast forward.

PIP:

Press to switch between picture-in-picture display and single display.

Numeric Keys:

For entering a TV channel number or radio frequency to switch to that channel.

REC Stop:

Press to stop the recording.

Stop:

Press to stop playback.

REC:

Press to start recording.

FM:

Press to open WinFast FM.

Mute:

Press to mute the audio.

DVD:

Press to open WinFast DVD.

Boss Key:

Hide the application.

CH+:

Press to switch the channel up.

Full Screen:

Press to display the video full-screen.

Enter:

Press to execute your selection.

VOL+:

Press to increase the volume.

Channel Surf:

Press to start channel preview.

Subtitle(DVD function key):
Press to show the DVD subtitle selections.

Language(DVD function key):
Press to show the DVD language selections

Video:

Change the input source in Video Input mode

Audio:

Press to switch between SAP, Stereo, and Mono on NTSC for users in USA and Taiwan; and between PAL I and PAL DK on PAL for users in China.

Display:

Display the current channel number on the screen.

Snapshot/M:

In Video input mode, press to take a snapshot; in FM mode, to add the current channel to the channel list.

Time-Shifting:

Press to switch on/off Time Shifting (the control panel will transform accordingly).

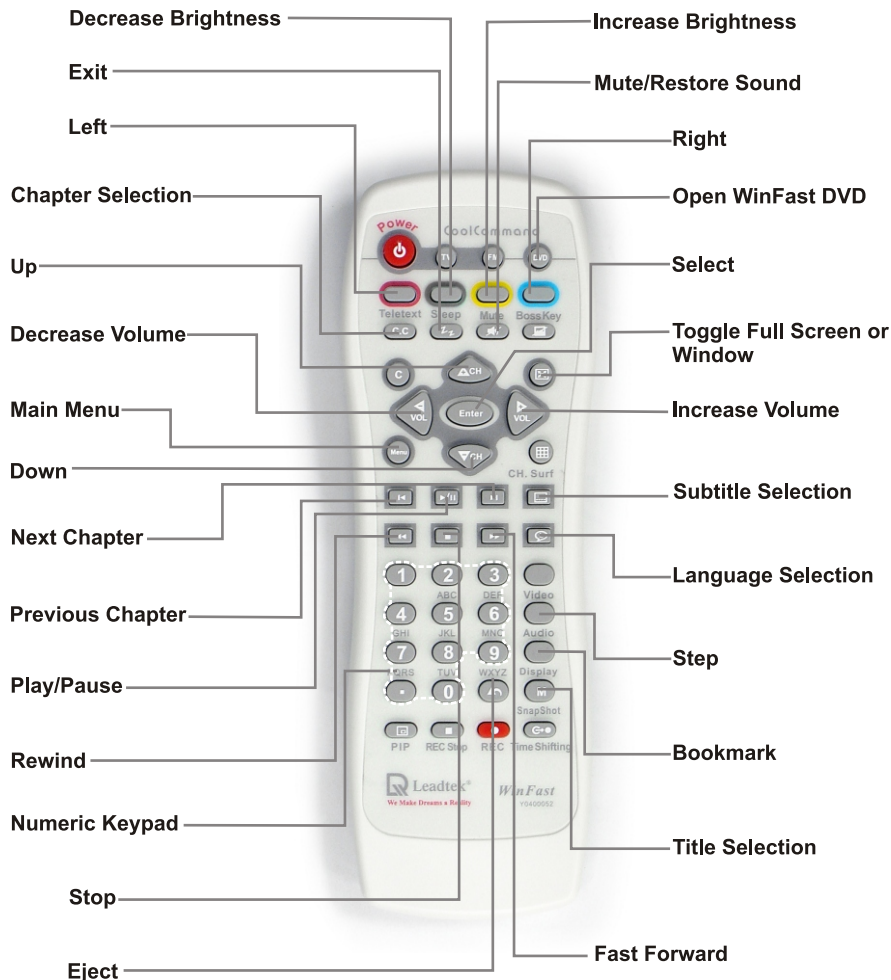
Recall:

Press to switch to the channel last viewed.



WinFast DVD Function

Remote Model 2 also supports WinFast DVD function. These functions are only active when you are running WinFast DVD and the focus is on the display window.(Focus means that the window is active or selected)



TV/FM: _____
Press to switch between Video Input mode and FM mode.

Numeric Keys: _____
For entering a TV channel number or radio frequency to switch to that channel.

Power: _____
Press to open/close the WinFast TV/FM application.

PIP: _____
Press to switch between picture-in-picture display and single display.

Time-Shifting: _____
Press to switch on/off Time Shifting (the control panel will transform accordingly).

Snapshot: _____
In Video input mode, press to take a snapshot; in FM mode, to add the current channel to the channel list.

REC: _____
Press to start recording.

VOL-: _____
Press to decrease the volume.

Channel Surf: _____
Press to start channel preview.

Full Screen: _____
Click to display the video full-screen.

Boss Key: _____
Hide the application.

Display: _____
Display the current channel number on the screen.

Recall: _____
Press to switch to the channel last viewed.

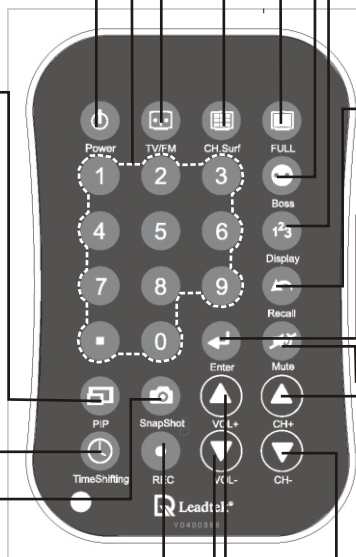
Enter: _____
Press after entering a TV channel number or FM frequency to switch to that channel.

Mute: _____
Press to mute the audio.

CH+: _____
Press to switch the channel up.

CH-: _____
Switch the channel down.

VOL+: _____
Press to increase the volume.



You can use the hot keys as short cuts to control a variety of functions.

<u>Hot keys</u>	<u>Controlled Functions</u>	<u>Hot keys</u>	<u>Controlled Functions</u>
Ctrl+C:	Configuration	A:	TV audio standard switch
Ctrl+R:	Record	F:	Fullscreen
Ctrl+E:	Explore WorkArea folder	Alt+Enter:	Fullscreen
Ctrl+S:	Sleep timer	V:	Switch input source
Ctrl+T:	Time-Shifting	S:	Switch MTS/Stereo or PAL-I/DK
Ctrl+F:	Video as desktop background	NumberPad:	Enter channel number
Arrow Left/Right:	Volume up/down	F1:	Help
M:	Mute	F2:	Video as desktop background
Arrow Up/Down:	Channel up/down	F3:	Picture-In-Picture function
Spacebar:	Snapshot	F4:	Average frame rate
Backspace:	Recall channel	F5:	Change color of status screen on control panel
Ctrl+'+':	Fine tune up	F6:	Channel Surf
Ctrl+'-':	Fine tune down	F7:	Activate/deactivate Closed Captioning (for NTSC) or Teletext (for PAL)
Ctrl+'0':	Fine tune as default	F8:	EPG
Insert:	Add channel	ESC:	Stop/cancel
Delete:	Delete channel		