

WinFast[®] TV USB II

QUICK INSTALLATION GUIDE

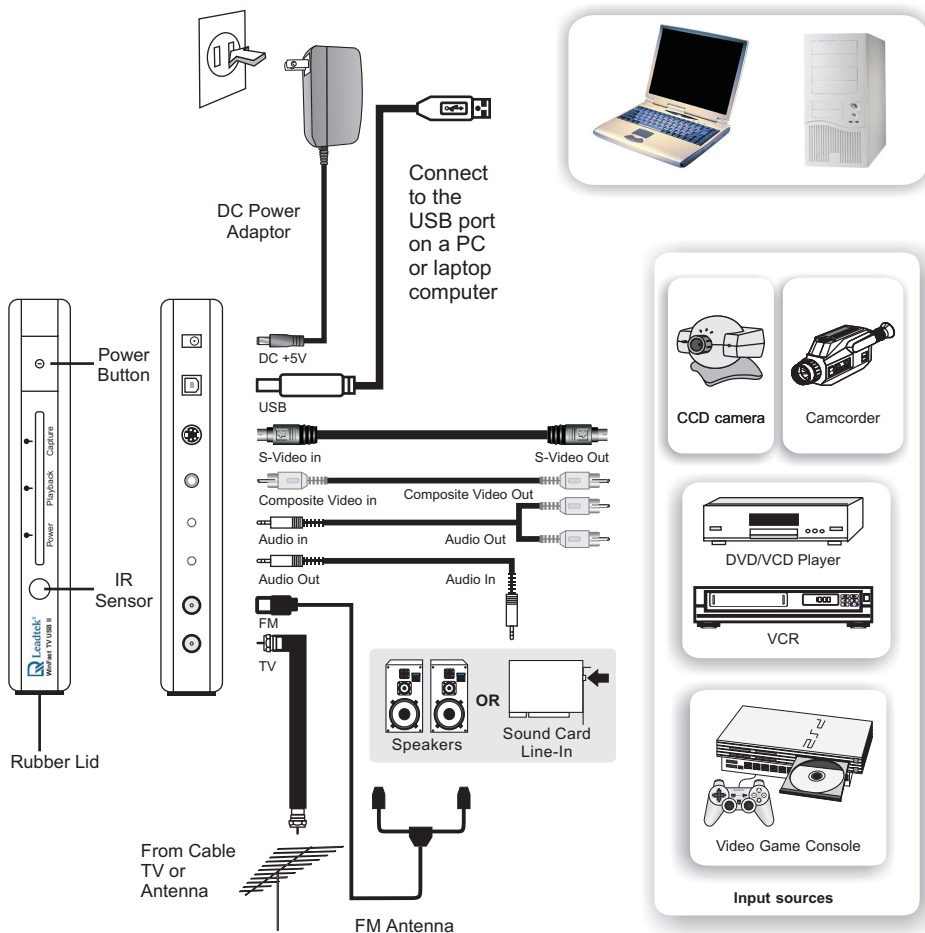


We Make Dreams a Reality

Leadtek Research Inc.

CODE: LR6020, 6021
P/N: W0500841

Connecting Devices



Before placing WinFast TV USB II on the stand, please remove the rubber lid on the side near the Leadtek logo first.

WinFast[®] TV USB II

QUICK INSTALLATION GUIDE

System Requirements

Minimum

- Pentium III 550 MHz or higher PC compatible
- 128MB or more system memory
- Microsoft® Windows XP with SP1 / 2000 with SP4 operating system
- 1 sound card line-in or speakers
- USB 2.0 compliant port

Suggested

- Pentium III 1 GHz or higher for MPEG-1/2 recording
- Pentium III 1.2 GHz or higher for Timeshifting

For Windows XP Users Only



To speed up CPU performance and to provide better image quality, please install Windows XP patch (KB822603) by the following steps. If you have installed Windows XP Service Pack 2 or later, skip this section and proceed.

Step 1:

Go to Microsoft Windows Update and find the **Recommended Update for Windows XP SP1 (KB822603)** file. Click **Add** and **Install Now**.

Step 2:

Accept the terms of pending License Agreement. The patch will then be installed.

Step 3:

The system will prompt you to restart the computer. Select **OK** to reboot.

Driver & Application Installation

Notice:

Please make sure the WinFast TV USB II is powered on and the USB cable is properly connected between PC and the device.

Step 1: When the **New Hardware Found** window flashes, dismiss it by clicking **Cancel**.

Step 2: Insert the software CD and click **WinFast TV USB**. Move the cursor to the WinFast TV USB II icon and select **Driver** to start installation.

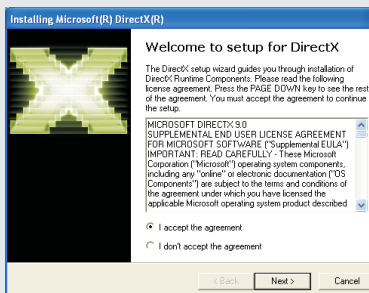
Step 3: Select the language you use and click **OK**.

Step 4: The **WinFast TV USB II Installation** window pops to display welcome info. Click **Next**.

Step 5: When the Install Shield Wizard has completed the installation, check **Yes, I want to restart my computer now** and click **Finish**.

Warning messages may pop up several times during the installation. Click **Continue Anyway** to proceed.

(The System may prompt you to install Microsoft DirectX for updating purpose. Select **I accept the agreement** and **Next** to install it. Follow the on-screen instructions and the system will automatically reboot.) When the driver installation is completed, click **YES** and **Finish** to restart the computer.



Step 6: After rebooting the computer, eject the CD and insert it again. Click **WinFast TV USB** and move the cursor to the WinFast TV USB II icon. Select **Application**.

Step 7: When the **Choose Setup Language** dialog box appears again, select the language you use and then click **OK**.

Step 8: The InstallShield Wizard shows the welcome message of the application installation. Click **Next** to start the installation of the application.

Step 9: A license agreement appears on the screen. Click **Yes** to continue.

Step 10: InstallShield Wizard will next prompt you to choose the destination location for the application. To use the preset location as shown in the lower part of the panel, simply click **Next** to go to the next step. If another location is desired, click **Browse** to choose a location.

Driver & Application Installation

Step 11: The InstallShield Wizard starts to install the driver. The progress is shown in the **Setup Status** dialog box as shown in the figure to the right.

Step 12: During the installation a Microsoft Windows Media Format License agreement appears stating the terms of using Windows Media Player codecs. Click **Yes**.

Step 13: A dialog box prompts you to exit all other applications before installing the Windows Media Player Codecs. Click **Yes**.

Step 14: Another Microsoft license agreement appears stating the terms of using Windows Media Player codecs. Click **Yes** to continue.

Step 15: The Windows Media Component Setup welcome message appears. Click **Next**.

Step 16: The setup program will next ask you if you want to update your component or reinstall the component entirely. Tick your desired option and then click **Next**.

Step 17: The setup program will then show a list of components. Make sure the component check boxes are checked. And then click **Next**.

Step 18: The setup program is now ready to install the Windows Media components. Click **Next**.

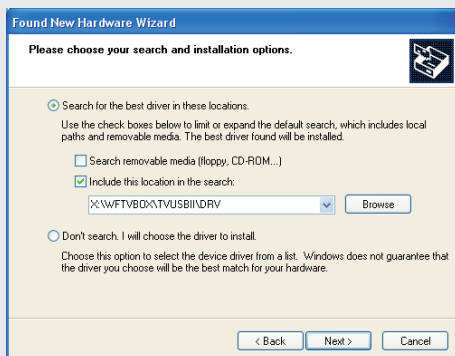
Step 19: When the setup has completed, click **Finish**.

Step 20: The entire installation of the application is completed, click **Finish**.

If you plug the WinFast TV USB II in a different USB port

The system may pop up a **Found New Hardware** window when you change its location. Check **Install from a list or specific location** and click **Next**. Tick **Search for the best driver in these locations** and **Include this location in the search**. Browse for the file under **X:\WFTVBOX\TVUSBI\DRV** (X is the letter of the CD-ROM drive) and click **Next** to install it.

The **File Needed** window may appear and request **emDevice.sys** when you plug WinFast TV USB II in the PC/Laptop. Insert the software CD and browse for the file under **X:\WFTVBOX\TVUSBI\DRV** (X is the letter of the CD-ROM drive) and click **OK** to install it.



There is no need to install WinFast PVR again if you have already installed it.

Technical Support

If the attempt of resolving the problem on your own was unsuccessful, please contact your vendor or E-mail our technical support staff at : service@leadtek.com.tw, and provide them in your message with: **product name, software driver version, motherboard manufacturer, BIOS version and chipset, Computer type and speed, Monitor manufacturer and model, and a detailed description of your problem.**

Leadtek Research Inc.

International Headquarters

18th Fl., 166, Chien-Yi Rd., Chung Ho, Taipei Hsien, Taiwan (235)

Phone: +886 (0)2 8226 5800 Fax: +886 (0)2 8226 5801

<http://www.leadtek.com.tw> E-mail: service@leadtek.com.tw

United States Office

46732 Lakeview Blvd., Fremont, CA94538, U.S.A.

Phone: +1 510 490 8076 Fax: +1 510 490 7759

<http://www.leadtek.com>

Europe Office

Antennestraat 16 1322 AB, Almere, The Netherlands

Phone: +31 (0)36 536 5578 Fax: +31 (0)36 536 2215

<http://www.leadtek.nl>

Copyright © 2003 by Leadtek Research Inc. All rights reserved.

No part of this document may be copied or reproduced in any form or by any means without the prior written consent of Leadtek Research Inc.

Leadtek makes no warranties with respect to this documentation and disclaims any implied warranties of merchantability, quality, or fitness for any particular purpose. The information in this document is subject to change without notice. Leadtek reserves the right to make revisions to this publication without obligation to notify any person or entity of any such changes.

WinFast® is a registered trademark of Leadtek Research Inc. Trademarks or brand names mentioned herein are trademarks or registered trademarks of their respective owners.

***WinFast*® TV USB II Quick Installation Guide
Version A
December 2003**