

Preface:

New features in FileMaker Pro

FileMaker Pro 5 brings a wide range of new features and improvements to the application. Responding to feedback from users and developers, much attention has been paid to the ways that users interact with the software. Menus, dialog boxes, and toolbars have all received attention in an effort to make the experience of using FileMaker Pro more productive and enjoyable, while FileMaker Pro software's ODBC and Microsoft Office compatibility have also been enhanced. Some of these changes will make using FileMaker Pro easier for people who are new to the application, while others will please longtime users and developers.

Note Some of these features may not be available in the Trial version.

The user interface's new look

The user interface of FileMaker Pro 5 has been redesigned with Microsoft Office users in mind. FileMaker Pro menus now follow the Microsoft Office standard, enabling new users who are familiar with Microsoft Office-compatible products to quickly locate many common menu choices.

Access to menu commands

There are two new ways to access menu commands:

- selecting buttons on a toolbar
- displaying context menus

Toolbars provide quick access to many FileMaker Pro menu commands. Show or hide toolbars by choosing View menu > Toolbars, then the name of the toolbar to display.

The standard toolbar in Browse mode



Drag a toolbar by the handle to reposition it

You can also quickly edit an object or data by choosing editing commands directly from a *context menu*. To display a context menu in Windows, hold down the right mouse button while the pointer is over an object or data. In the Mac OS, hold down the Control key, then click the mouse button over an object or data. The type of object you click on and the mode you're in will determine which menu commands you can access.

Important Some menu commands and key equivalents have changed from their previous location.

Resizable dialog boxes, multiple item list selections

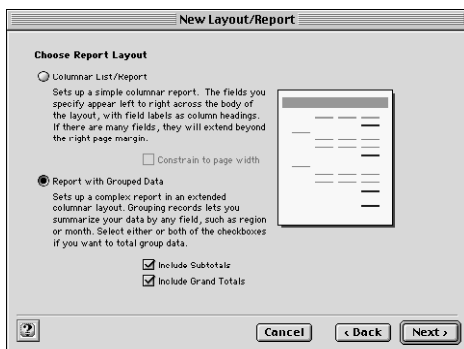
Longtime users will appreciate subtle but much-anticipated improvements, such as resizable Define Fields, Script Definition, Define Relationships, and Define Value Lists dialog boxes. Multiple items in each of these dialog boxes can now be selected and modified at one time. Additionally, the contents of Define Fields, Define Relationships, and Define Value Lists can be easily sorted with a single click of a column heading.

Printing script definitions

Script definitions now print in a style that is more consistent with their appearance in the Define Scripts dialog box. When a script is printed, the steps appear in bold, and data associated with a step appears in square brackets following the step name. Selected script step options are displayed in plain text under the step. The overall effect is that printed scripts are now easier to read and follow.

New Layout/Report assistant

FileMaker Pro 5 now has an assistant to help you with the creation of layouts. (You use layouts to display and print the data in your database.) The New Layout/Report assistant guides you through creating a layout according to options you choose in a series of panels. You can choose to create layouts that are appropriate for viewing your data onscreen, or for printing reports. You can also create layouts that make it easy to print mailing labels or envelopes using the data in your database. Once you have created a layout, you have complete control over modifying it to suit your needs.

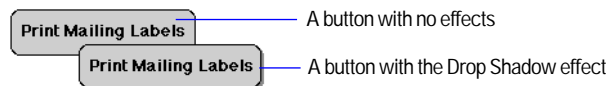


Using the New Layout/Report assistant, you can also now specify a layout *theme* to enhance the appearance of a layout or report and to give all your layouts a consistent look. Choose from a wide array of styles, each with a variation designed specifically for onscreen use or print.

Other layout improvements

Add a 3D look to layout objects

You can apply an effect that adds three-dimensional qualities to a field or object on a layout, including an embossed effect, an engraved effect, and a drop-shadow effect.



Create custom colors and use expanded color palettes

You can now add custom colors to fields, lines, rectangles, body parts, and other layout objects, as well as use standard colors from an expanded choice of color palettes, including an 88 color palette, a “web safe” 215 color palette, and a 256 color palette.

ODBC support in FileMaker Pro

FileMaker Pro 5 also brings some hefty improvements to its ODBC support.

You can use the ODBC support in FileMaker Pro to:

- access FileMaker Pro data from ODBC-compliant applications to create charts, construct ad-hoc queries, or build a front-end with other applications, like Microsoft Visual Basic
- construct SQL queries in FileMaker Pro (as in FileMaker Pro 4.1) to import data from other ODBC data sources like Microsoft Access or Oracle databases

FileMaker Pro shares data via ODBC with the Data Access Companions. The companions respond to SQL queries sent from other ODBC-compliant applications and interface between the FileMaker Pro ODBC driver and your FileMaker Pro database. Use the Local Data Access Companion to receive queries from an ODBC-compliant application on the same computer. The Remote Data Access Companion can receive requests from ODBC-compliant applications over a TCP/IP network.

Microsoft Excel import and file conversion

Converting many versions of Microsoft Excel spreadsheets is now easier than ever. FileMaker Pro can interpret column names as field names and assign an appropriate data type (text, number, date, or time) to fields, based on the data in the column. You can import and convert recent versions on both platforms through Excel 98.

ActiveX Automation support (Windows)

FileMaker Pro 5 adds support for ActiveX Automation on Windows. Using ActiveX Automation, you can automate a task that spans applications — similar to the way Apple Events allows one application to command another on the Mac OS. Typically, this is accomplished by building a custom application in Visual Basic, and using this application to command other applications.

With ActiveX Automation and Visual Basic you can create your own application (with its own interface) and drive multiple applications to accomplish a task. For example you could define a window in Visual Basic that has one button that says, “get today’s sales data”. The procedure for “get today’s sales data” would open a FileMaker file and find all the sales for today; it would then export the data to a file. It would then start up Microsoft Excel and graph the exported data and have Microsoft Excel display the graph.

QuickTime

FileMaker Pro 5 supports Apple QuickTime 3.0 and QuickTime VR 3.0. You can insert any file type supported by QuickTime into a container field. If your database contains QuickTime movies in container fields and you publish the database on the Web using FileMaker Pro Instant Web Publishing, you can also play the QuickTime movies in a web browser.

Web publishing

Changes have been made to the Instant Web Publishing feature in FileMaker Pro to enhance the appearance of published databases and improve their security.

Web styles

FileMaker Pro Instant Web Publishing now includes web styles that determine the appearance of your database in a web browser. For example, you can choose the Lavender style to display titles and buttons in a purple color scheme. You can also choose styles that are specifically designed for searching or creating records. For example, you can create a guest book using the Entry Only style. You can choose a different style for each published database.

Most FileMaker Pro web styles *render* layouts. That is, they display your layouts in a web browser almost as they appear in a FileMaker Pro window. Web styles can render layouts in Form View, New Record, and Edit Record pages. Most FileMaker Pro web styles use cascading style sheets to render layouts.

Note The browser viewing the FileMaker Pro application via the FileMaker Pro Web Companion must support cascading style sheets for this feature to function properly.

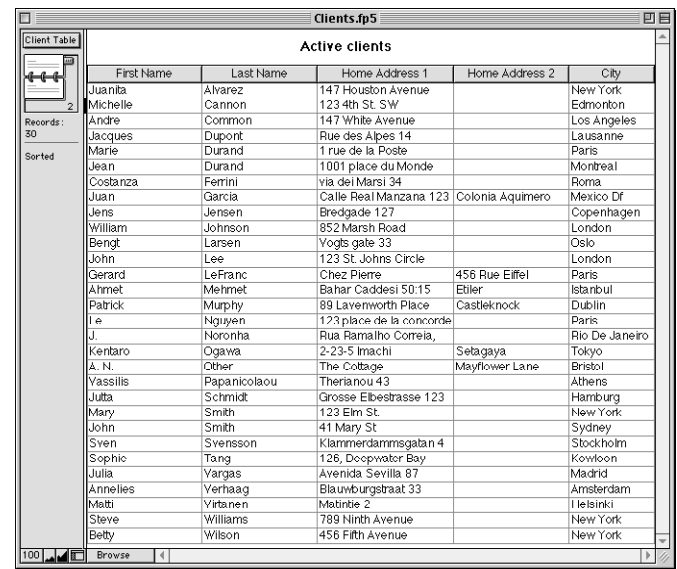
New Web Companion options

A new security option is available to limit access to your databases. You can now specify the IP addresses that can request data from the FileMaker Pro Web Companion. For example, you can specify that only IP addresses that start with 1.2.3.* can access your databases. Additionally, the log file format has been changed to comply with the NCSA/CERN compatible Common Log format. Also, there are new options for tracking Web Companion activity in log files.

View as Table

FileMaker Pro has always offered two ways to view your layouts: View as Form, which displays one record on the screen at a time, and View as List, which displays more than one record at a time.

FileMaker Pro 5 now adds a third method of viewing your data onscreen: View as Table. With View as Table, data is displayed in a grid-like arrangement, similar in appearance to a spreadsheet, with each row displaying a record and each column displaying a field.



The screenshot shows a FileMaker Pro 5 window titled 'Clients.fp5'. Inside, there's a 'Client Table' view. On the left, a sidebar shows 'Records: 30' and 'Sorted'. The main area displays a table with the following data:

First Name	Last Name	Home Address 1	Home Address 2	City
Juanita	Alvarez	147 Houston Avenue		New York
Michelle	Cannon	123 4th St. SW		Edmonton
Andre	Common	147 White Avenue		Los Angeles
Jacques	Dupont	Rue des Alpes 14		Lausanne
Marie	Durand	1 rue de la Poste		Paris
Jean	Durand	1001 place du Monde		Montreal
Costanza	Ferrini	via dei Marsi 34		Roma
Juan	Garcia	Calle Real Manzana 123	Colonia Aquimero	Mexico Df
Jens	Jensen	Bredgade 127		Copenhagen
William	Johnson	852 Marsh Road		London
Bengt	Larsen	Yogts gate 33		Oslo
John	Lee	123 St. Johns Circle		London
Gerard	LeFranc	Chez Pierre	456 Rue Eiffel	Paris
Ahmet	Mehmet	Bahar Caddesi 50:15	Etiler	Istanbul
Patrick	Murphy	89 Lavenworth Place	Castleknock	Dublin
Te	Nguyen	123 place de la concorde		Paris
J	Noronha	Rua Ramalho Correia,		Rio De Janeiro
Kentaro	Ogawa	2-23-5 Imachi	Setagaya	Tokyo
A. N.	Other	The Cottage	Maryflower Lane	Bristol
Yassilis	Papanicolaou	Thessalon 43		Athens
Jutta	Schmidt	Grosse Elbstrasse 123		Hamburg
Mary	Smith	123 Elm St.		New York
John	Smith	41 Mary St		Sydney
Sven	Svensson	Klammerdammsgatan 4		Stockholm
Sophio	Tang	126, Deepwater Bay		Kowloon
Julia	Vargas	Avenida Sevilla 87		Madrid
Annelies	Verhaag	Blauwburgstraat 33		Amsterdam
Matti	Virtanen	Matinkie 2		I Helsinki
Steve	Williams	789 Ninth Avenue		New York
Betty	Wilson	456 Fifth Avenue		New York

Columns can easily be resized by dragging an edge of a column's heading, sorted by clicking on a column's heading (if enabled), and reordered by dragging a column to a new position.

Improvements to value lists

Value lists have been improved in FileMaker Pro 5, too.

There are three major improvements to value lists:

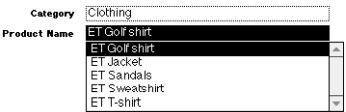
- You can now base a list of values on a relationship. This can yield a subset of a field's values, rather than the field's entire contents. The value list will display only values from records that are consistent with the criteria defined in the list's underlying relationship.
- When you are deriving values from one field, but displaying another field's contents, you can now choose whether to sort on the first field (the one whose values are being stored) or the second one (the field whose values are just being displayed).
- It is now possible to specify a value list that is defined in another FileMaker Pro 5 database. This allows you to reduce the repetition of custom or field-based value lists by reusing one central list in multiple files, and to use value lists in portals (where it's necessary to use a value list that must exist in the related file).

Note The external value list (using related values) must be in the same file as the related field in the portal.

The example below shows a value list based on a relationship. The same field is displaying a different list of values because the value in the match field, Category, has changed.



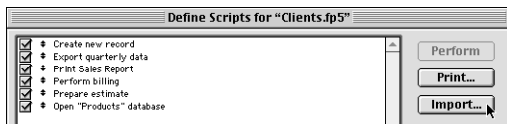
Value list based on key field value "Accessory"



Value list based on key field value "Clothing"

Import script

You can now import scripts from other FileMaker Pro 5 databases into the current database. When you import a script, FileMaker Pro uses a strict protocol to map fields, layouts, scripts, value lists, files, relationships, and script references. Objects that do not map are still imported but are marked as unknown, allowing you to map script steps from the source file to the appropriate references in the destination file.



Hands-on, task-oriented tutorial

To get new users up to speed more quickly, FileMaker Pro now features an extensive hands-on tutorial. Tutorial lessons guide you through common database tasks, including finding records, creating databases, calculations, scripts, and reports, and defining relationships.

Import Update

You can now update records or individual fields in one file with information from matching records or fields in another file. You choose the criteria that determine which records “match” and which records and fields will be updated. It's a great feature for updating the desktop copy of your file in your office with changes you make on the road on your laptop.

This feature is accessible for any file that can be imported.

Multi-User (Hidden)

You now have the ability to easily “hide” databases being shared on a network by choosing the Multi-User (Hidden) option. This feature is especially useful for preventing network users from accidentally opening the “wrong” file, for example opening a related Line Items file when it's your intention that they open a Data Entry file.

This page intentionally left blank.