

EPS Generator

User Guide

Contents

INSTALLATION	2
System Requirements.....	2
INSTALLING	2
INTRODUCTION	3
SHAREWARE	3
Why register?.....	3
SETTINGS.....	4
EPS Options.....	4
Folder Information.....	5
PROCESSING.....	8
TROUBLESHOOTING Q&A	10
TECHNICAL SUPPORT.....	11

Installation

System Requirements

Required

- MacOS v7.5 or higher
- AppleScript 1.1 or higher
- Any 68030 based Macintosh processor
- 640 by 480 resolution monitor
- 2Mb free system RAM

Recommended

- MacOS v8.0 or higher
- PowerPC Macintosh compatible processor
- 4Mb free system RAM

Please note:

Free system RAM is defined as the amount of RAM available after the system software and QuarkXpress™ have loaded.

It is essential that after all three items have loaded, system software, QuarkXpress™ and the *EPS Generator*, that the machine still has at least 2Mb of free RAM. This is due to the memory requirements of AppleScript.

The amount of memory available can be found from the “About” menu item, under the “Apple” icon.

Installing

Installation of *EPS Generator* is simple. Just copy the *EPS Generator* application icon to your hard disk.

Introduction

EPS Generator has been designed to make the process of generating EPS images from QuarkXPress documents as simple and painless as possible.

Why use *EPS Generator*? Here is a selection of reasons, see if any pertain to you:

Manual System	Automatically, using <i>EPS Generator</i>
Requires you to employ extra personnel, thus reducing your companies profitability.	Once initial setup is complete, you can leave EPS Generator to do its job indefinitely. It does not require Tea, Toilet or Holiday breaks.
Possibility the user will save the EPS with the wrong options, perhaps failing to omit TIFF & EPS images, causing problems with your OPI server.	Always saves the EPS with the options you specify at setup.
Possibility the user will save the EPS with the wrong file name, causing your page make-up operators headaches.	Always saves with the right file name, optionally adding any suffix you desire.
Possibility the user will save the EPS into the wrong folder, again causing your page make-up operators even more headaches.	Always saves into the right folder, moving problems documents into an error folder.

Shareware

Please remember, *EPS Generator* is a Shareware product. This means that if you continue to use it, you should pay your registration fee. Currently registration is only \$40 per licences (Discounts available for site/world licences).

For more information on registration please view the Register Me document, or double click on the Register application.

Registration can be completed through KAGI, who accept most major credit cards.

Why register?

- Free technical support via email
- Free updates as and when they become available, emailed to you direct
- Modifications to *EPS Generator* are available at a reduced cost to registered users

Settings

EPS Generator supports multiple settings, this means that it can process more than one set of folders at a time, as well as giving each setting a different set of EPS options.

Before creating a new setting you will need to know the following information:

EPS Options

- What format you want the EPS to be in
 - Macintosh black and white composite
 - Macintosh colour composite
 - Macintosh DCS
 - Macintosh DCS2
 - PC black and white composite
 - PC colour composite
 - PC DCS
 - PC DCS2
- OPI Options
 - Omit TIFF
 - Omit TIFF & EPS
 - Include Images
- Whether to generate ASCII or binary postscript

Folder Information

- Where the Quark documents are located that you want to generate EPS images from
- Where the Quark documents will be moved to when they are processed
- Where the Quark documents will be moved to in the event of an error
- Where the EPS images will be saved into

NB: You will have to have the folders available on the machine where *EPS Generator* is loaded. If the folders are located on a server, then mount the server.

Here is an example folder structure, which is setup for two different settings:

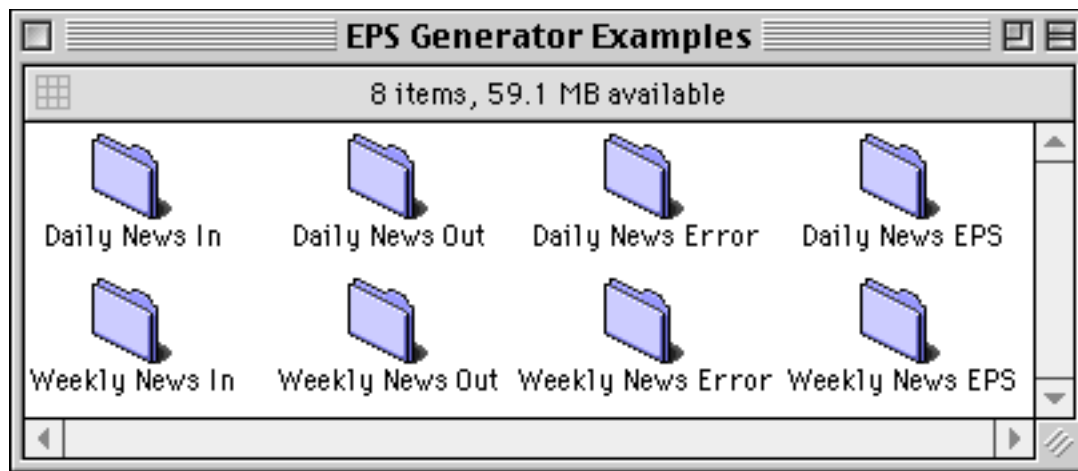


Fig. Example folder structure

Once you have acquired the necessary information you can create a new setting. From the main *EPS Generator* window click the 'Add' button:

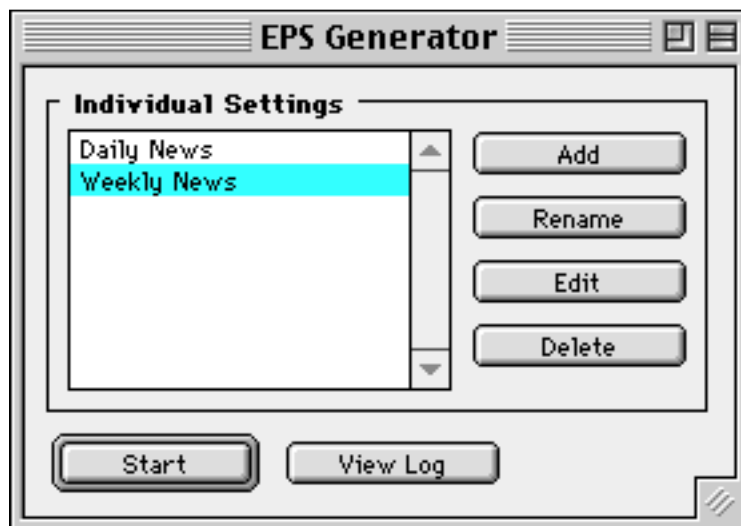


Fig. Main *EPS Generator* window

After clicking the ADD button, you are asked for the name of a new setting:

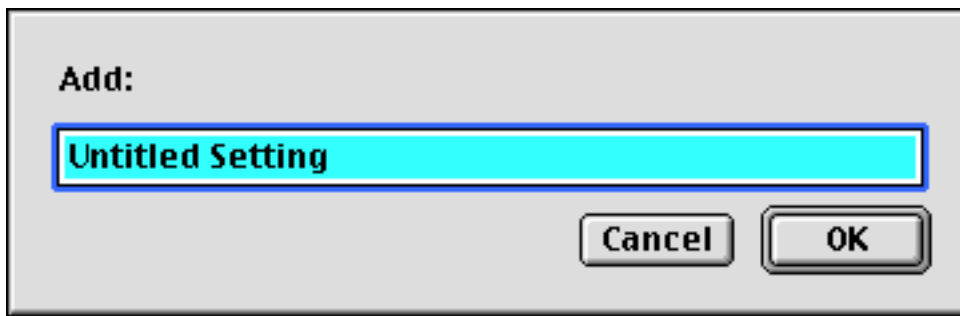


Fig. Add setting dialog

Key in the name of the new setting. If you click the OK button, you are then taken to the Edit window:

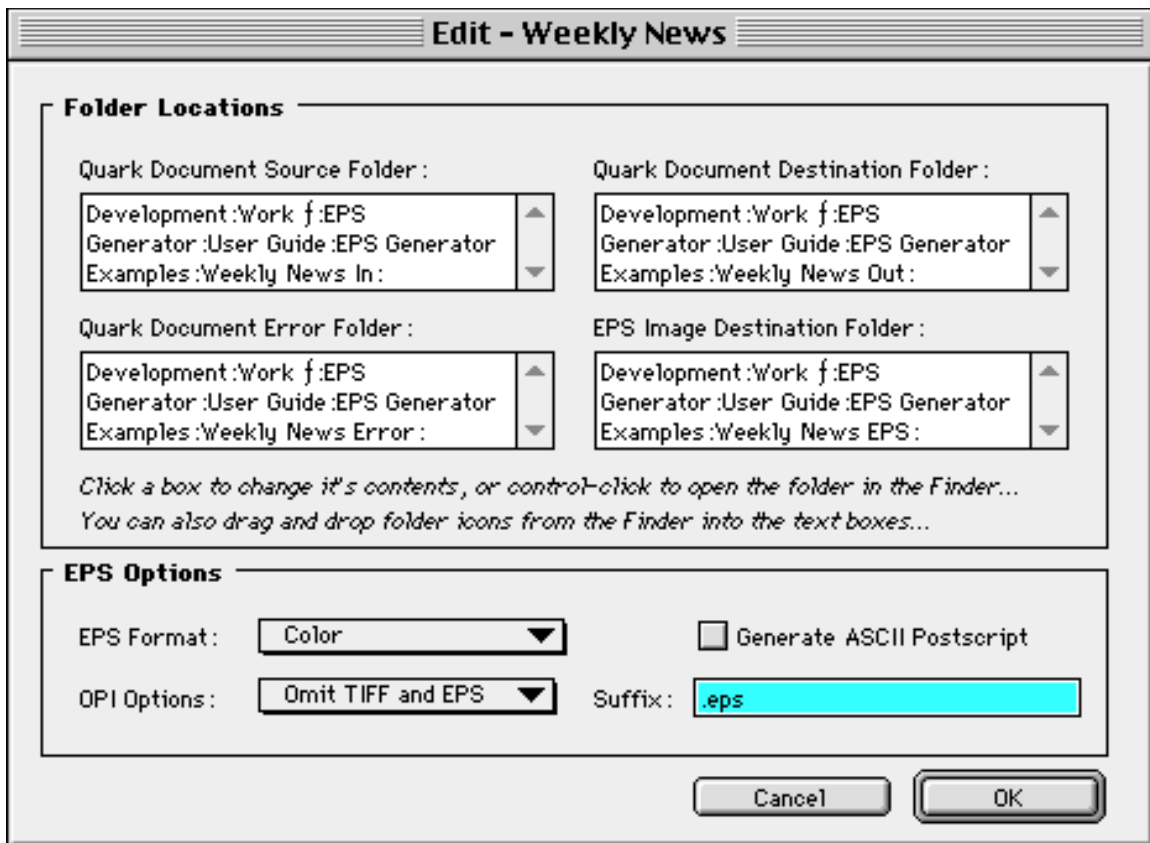


Fig. Edit window

In the edit window you can specify the folder locations. To change a location, either drag the folder from the finder to the box required, or click inside a box to specify a folder.

Change you EPS options accordingly, and specify any suffix you wish added to the generated EPS file.

Click OK to save the settings, or click Cancel to dispose of the new setting.

The other buttons in the *EPS Generator* window are:



Fig. Main *EPS Generator* window

- Rename

Allows you to rename a setting. You cannot have two settings with the same name.

- Edit

Allows you to edit a setting. You can also edit a setting by double clicking on it in the list of settings.

- Delete

This allows you to delete a setting, you are asked to confirm the deletion before it takes place.

- View Log

This brings up the log window, it allows you to view the log, clear it, or save it to a disk file for printing.

- Start

Clicking this starts processing of the settings, which is discussed next.

Processing

To start processing click the 'Start' button from the *EPS Generator* window.

EPS Generator will then check your settings. If problems are found it will let you know. In the example below, the source folder for the setting 'Daily News' cannot be found:

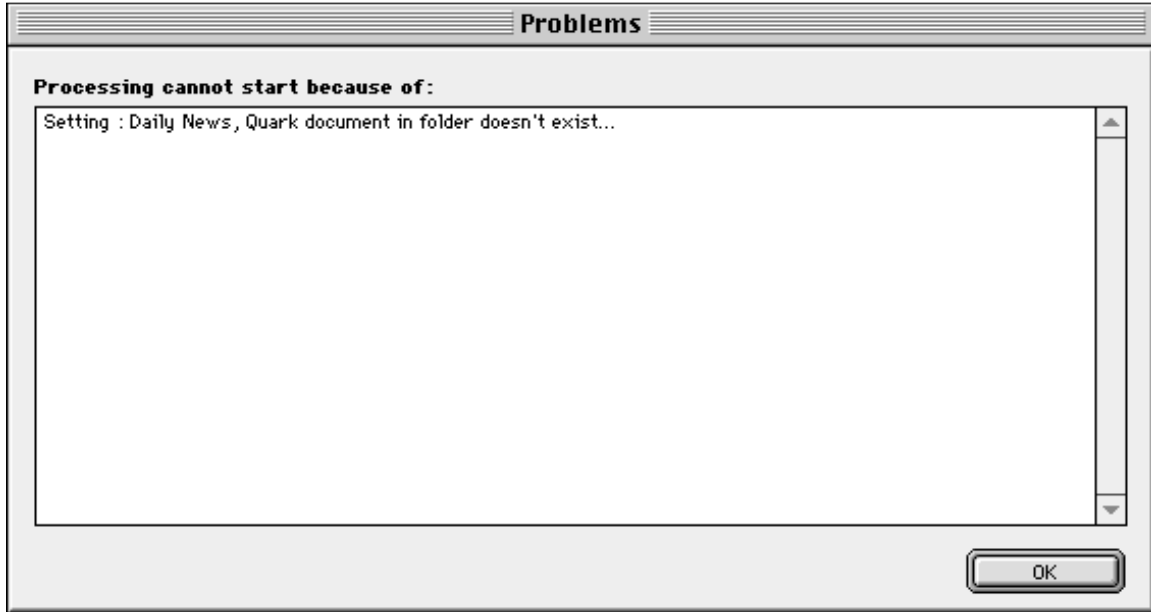


Fig. Example problem window

If everything checks out OK, then the processing window opens, and *EPS Generator* starts to process the settings:

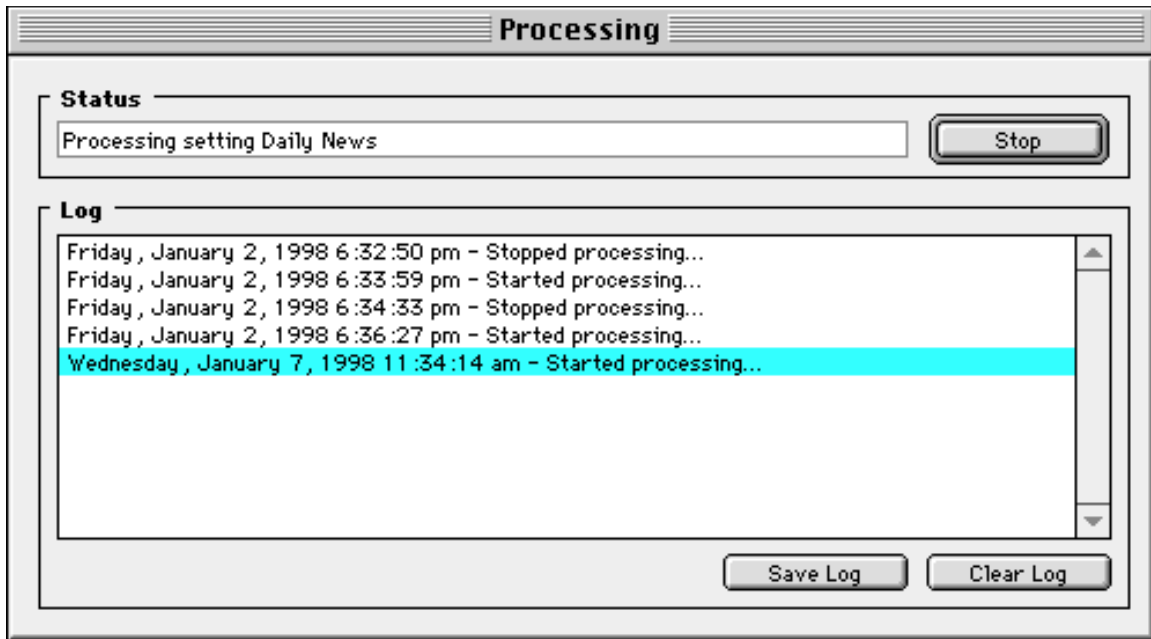


Fig. Processing window

Whilst processing you can click the 'Stop' button to halt processing, and return to the main *EPS Generator* window.

The log window contains any information that might be of interest, such as when processing started and stopped, if there were any problems, and what the problems were.

You can save the log to a text file for printing, or alternatively clear the log if it starts to get too full.

Troubleshooting Q&A

Q. *EPS Generator* crashes with a ‘Type 1’ error message

A. The ‘Type 1’ error message is normally caused by lack of memory. *EPS Generator* is compatible with both Virtual memory and RAM Doubler™. You should try to give more memory to *EPS Generator*. This can be done by following these simple steps:

- Locate the *EPS Generator* application through the ‘Finder’
- Click on the *EPS Generator* icon once
- Select ‘Get Info’ from the File Menu, the following window will open:

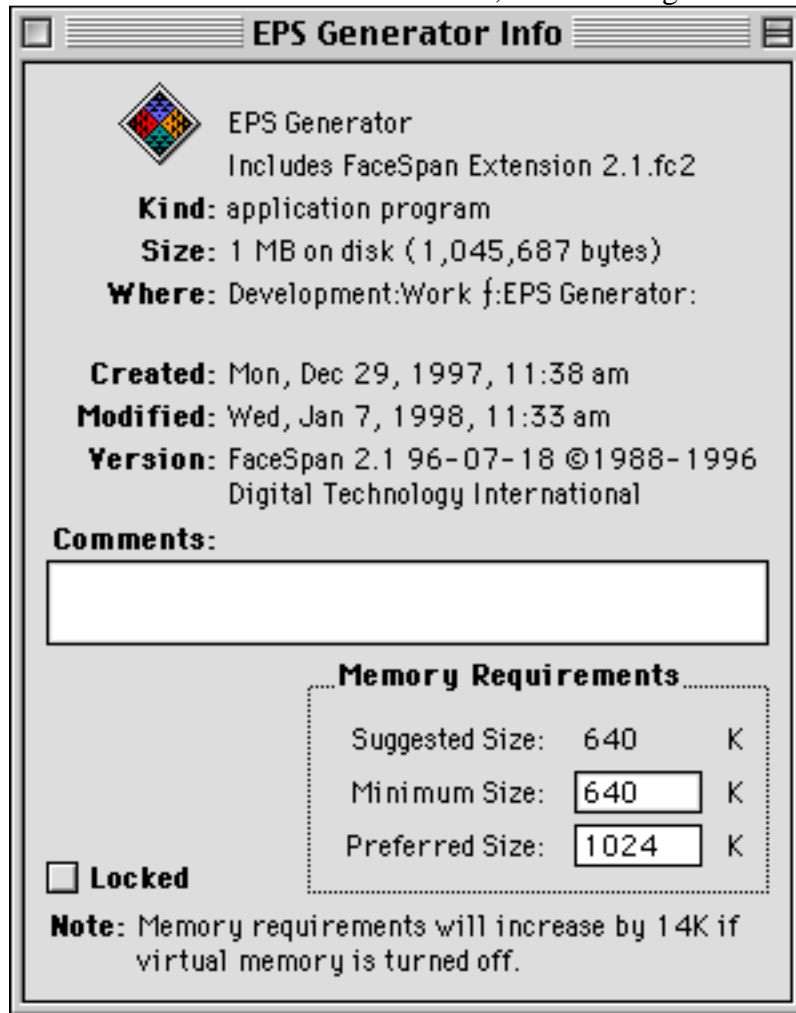


Fig. Get Info window

In the box next to the label “Preferred Size:”, enter a figure of “2048” or higher if you memory allows.

Remember to leave at least 2Mb of RAM free for AppleScript.

Q. *EPS Generator* will not start when double clicked

A. This can sometimes be caused by AppleScript not being installed correctly. The simplest way to resolve this problem is to re-install system software, if this is not an option, then you can download the AppleScript installer from Apple Computers WWW site at www.applescript.com

Q. *EPS Generator* says there is a problem although everything seems fine

A. Again this can be caused by AppleScript not being installed correctly, see the answer to the above question for more detail.

Q. How do I know if I'm using the latest version of *EPS Generator* ?

A. If you are a registered user, the latest version will be sent to you automatically.

Q. How did you develop something like *EPS Generator* ?

A. *EPS Generator* was developed with the help of the following software:

MacOS 8.0	Apple Computer Inc.	www.apple.com
AppleScript™	Apple Computer Inc.	www.applescript.com
FaceSpan™	DTI	www.facespan.com
QuarkXPress™	Quark Inc.	www.quark.com

Q. I need an answer to a question not listed above

A. If you are a registered user, refer to your registration confirmation information, (Try saying that when you're drunk!).

If you are not a registered user, then follow basic trouble shooting procedures (In this order):

- Disable all but the standard system extensions and control panels
- Disable all QuarkXTensions
- Re-install system software
- Try working on a local machine instead of over a network

Also watch out for:

- The version of QuarkXpress that is being used with *EPS Generator* is the same version that was used to create the document originally.

Technical Support

Technical support is only available to registered users. If you are not a registered user then please read the section on registering this product at the beginning of this document, or view the "Register Me" text file.

Details on receiving technical support will be sent with your registration confirmation.