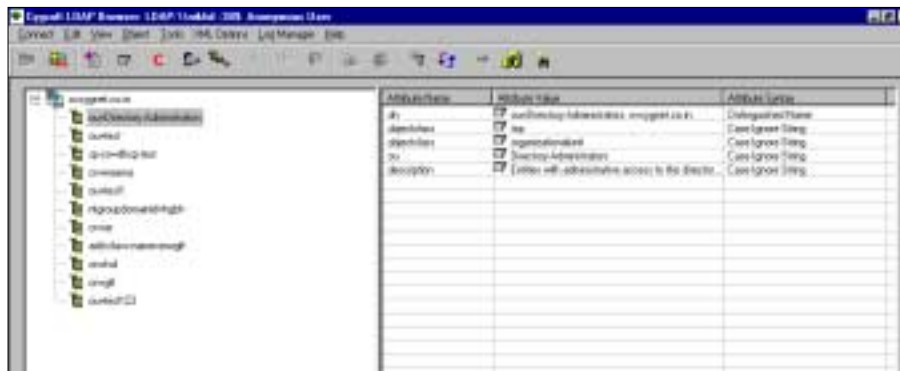


Cygsoft LDAP Browser 2.0

Cygsoft has developed a feature rich and robust LDAP browser, which can browse through LDAP database trees. The Cygsoft LDAP Browser is a window-based application, which provides a user-friendly interface to directory information. It enables users to access data quickly and efficiently, thus saving time and increasing productivity.



Cygsoft's LDAP browser displays the directory information in a tree structure. It provides easy-to-use pop-up menus, and a graphic indicator to show progress in loading data, together with detailed error messages. Directory managers can easily modify the contents of their LDAP databases. The browser also supports customizable views.

TABLE TITLE

Operating Systems Supported	Windows 95, Windows 98, Windows NT workstation, Windows NT server with sp6, Windows 2000 with Internet Explorer 4.0. Winsock2 should be installed on Win95 OSR2.0. IE 5.0 or Above for XML Rendering Feature on All Operating Systems
LDAP Servers Supported	Most LDAP version 2 and version 3 servers
Specific servers	iPlanet 5.1, iPlanet 4.1(Netscape), NDS, OpenLDAP, ADS (Limited support)., Exchange Server (Limited support).
LDAP Authentication Features Supported	Simple Password and Anonymous methods
GUI	Add, Modify, Delete, Rename, Search, Cut, Copy & paste, Drag and Drop, Import & Export LDIF, Creation of objects, Schema Browsing and extending, Fetch DN's, Creation and Modification of XML templates, LDAP Search, Create object using xml templates. Save Search Result, Refresh Node, Refresh Tree, Set no of entries to view, Profile Manager, Log Manager, View RootDSE Properties, Edit Object Properties.
Logs	Tree structure of DIT, Also shows attributes, Name, value and syntax. The browser also allows additions of new object classes and attributes in the schema. General and Import/Export LDIF information and errors are logged in the Log Manager.

