

Background

package

# READIRIS OCR

универсальный

real

text

*Save Time, No More Retyping !*

typed

IRIS

Druckqualität

trainable

učící modul

OCR

paper

matrix

обработка

caractères accentués

omnifont

easy

recognition

fax

neue Symbole und Schriftarten

IMAGE  
RECOGNITION  
INTEGRATED  
SYSTEMS

JUST READ IT!®





## **WHAT'S NEW FOR READIRIS 3.95?**

---

Congratulations on buying Readiris! This CD-ROM offers the newly released version of this best-selling OCR software package. Here are the highlights of version 3.95:

- ❑ Readiris 3.95 comes with a new **recognition kernel** using the latest advances in OCR technology. As a result, a higher accuracy rate is obtained with less user interaction.
- ❑ Readiris offers **autoformatting**: Readiris can restore the appearance of the original document in the recognized text: the blocks, typestyle etc. are recreated after the source document. If you want to re-use the text in its original layout, Readiris just does it for you!
- ❑ As can be expected of a true multilingual OCR solution, the **language support** is extended further. Readiris now reads no less than 31 languages!
- ❑ Different **alphabets** can be mixed: when Western text pops up in Greek and Russian documents - untranscribable proper names, brand names etc. are usually quoted "as such" in Russian and Greek documents - Readiris switches to the correct alphabet automatically. Readiris sees to it that these words and expressions do not get converted into meaningless, badly recognized characters.
- ❑ Windows 95 and NT users can install a **32 bit version** for optimal speed; a 16 bit version is available for Windows 3.1x users.
- ❑ **Scanner support** is extended: the latest Twain improvements were incorporated, resulting in a wider range of supported scanners.

## **ABOUT THIS RELEASE NOTE**

---

This release gives a detailed description of the new features and capabilities of Readiris 3.95.



It does not intend to be a complete user documentation of Readiris. To make full use of the many advanced capabilities of this software package, it is mandatory that you study the Readiris manual or the on-line help information closely.

## **CUTTING-EDGE TECHNOLOGY**

---

Readiris 3.95 is based on a completely revised recognition kernel incorporating the latest advances in OCR technology.

This results in an increased OCR accuracy on all types of documents and less user interaction: degraded faxes and dot matrix printouts as well as crisp, well printed documents can now be read with higher precision and less verification and learning by the user than ever before.

## **FAST, FASTER, FASTEST!**

---

This new 32 bit OCR kernel is limited to those platforms that can run 32 bit software - a 32 bit and a 16 bit version of Readiris is supplied on this CD-ROM.

The Readiris 32 bit software runs on the platforms Windows 95 and Windows NT. The 16 bit software should always be used on the Windows 3.1x platforms, but can also run on Windows 95 and Windows NT.

The 32 bit version not only offers more powerful OCR than its 16 bit equivalent, it also runs significantly faster! All users who can run the 32 bit version on their computer system are highly recommended to do so.

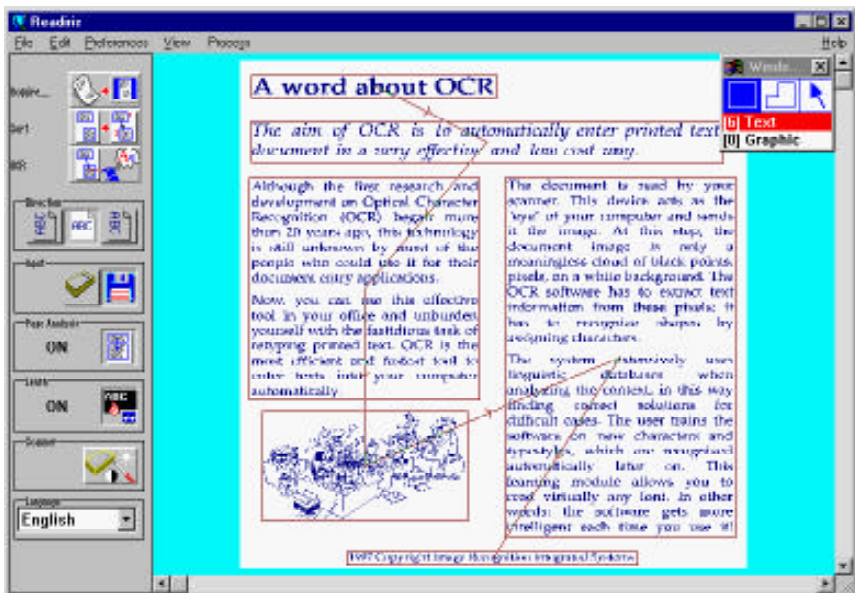
However, some scanner drivers may not work in the 32 bit environment. In that case, you are limited to the 16 bit version of Readiris.

Such a phenomenon should never occur with Twain drivers, as the Twain standard accounts for 32 bit support. Check the "Read Me" files on the CD-ROM and get in touch with our support team before you abandon the 32 bit version - see below to find out how to get in touch with I.R.I.S.

## READIRIS RECREATES YOUR DOCUMENT LAYOUT

Speed set apart, another way of increasing your productivity further is to make use of the new AutoFormat capability. "Autoformatting" means that Readiris will recreate the layout of the original document in the output text: the text blocks are in the same place, the font size and typestyle - italic text remains italic - is maintained across the recognition.

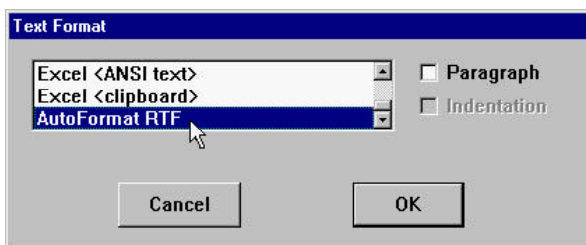
Here's an example of how it works. To get acquainted with this feature, you can open the image file *autoform.tif* which is found in your Readiris folder. It looks like this.



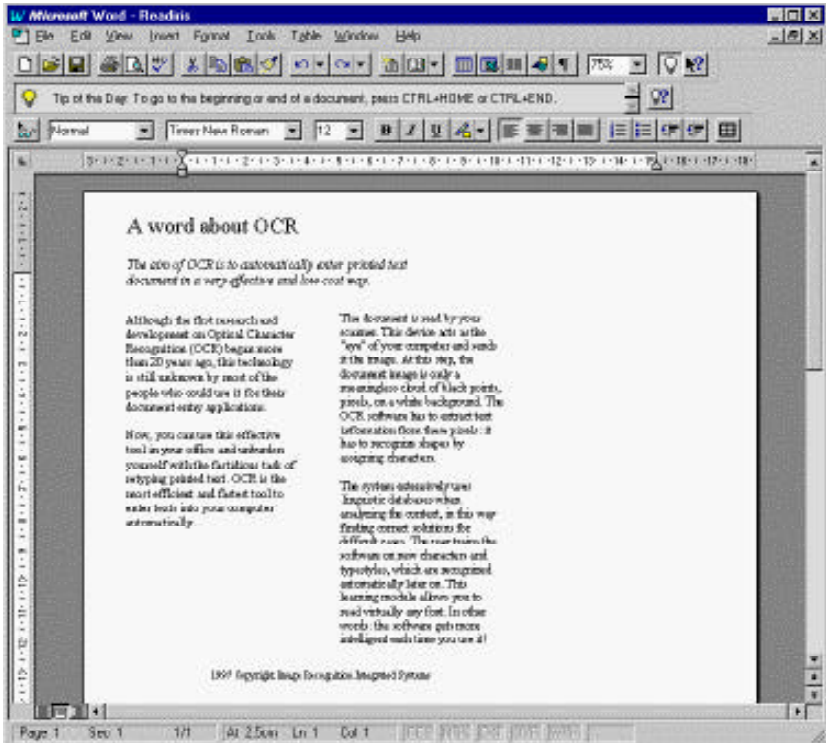
To recreate the original layout, simply select "AutoFormat RTF" as output format with the command "Text format" under the "Settings" menu. Note that



this is an option: the user selects the “normal” format "RTF (Word)" when he wants to use the Rich Text Format *without* maintaining the document layout!



When the recognized text is opened after OCR using a wordprocessor, the text looks like this without any formatting by the user. (To see the effect correctly, you need to enable the “WYSIWIG” mode of your wordprocessor, mostly called “page layout” mode.)



Notice that graphics aren't maintained: you'll get an empty space where a photo, lineart graphic etc. used to be. In our example, this is the case with the lineart graphic of the secretary.

Layout reconstruction is limited to the RTF format. Other, "page layout" formats such as ASCII, ANSI etc. do *not* support advanced formatting codes and therefore cannot offer the AutoFormat feature. On the plus side, RTF is a widely used text format that can be opened by any popular wordprocessor.



## READIRIS CHANGES LANGUAGES AS NEEDED

---

Readiris 3.95 does further honor to its reputation as a truly multilingual OCR package by extending the number of supported languages again. With Readiris 3.95, no less than 31 languages can be recognized!

Also notice that the English and American - or should we say “international”? - variants of the English language are distinguished.



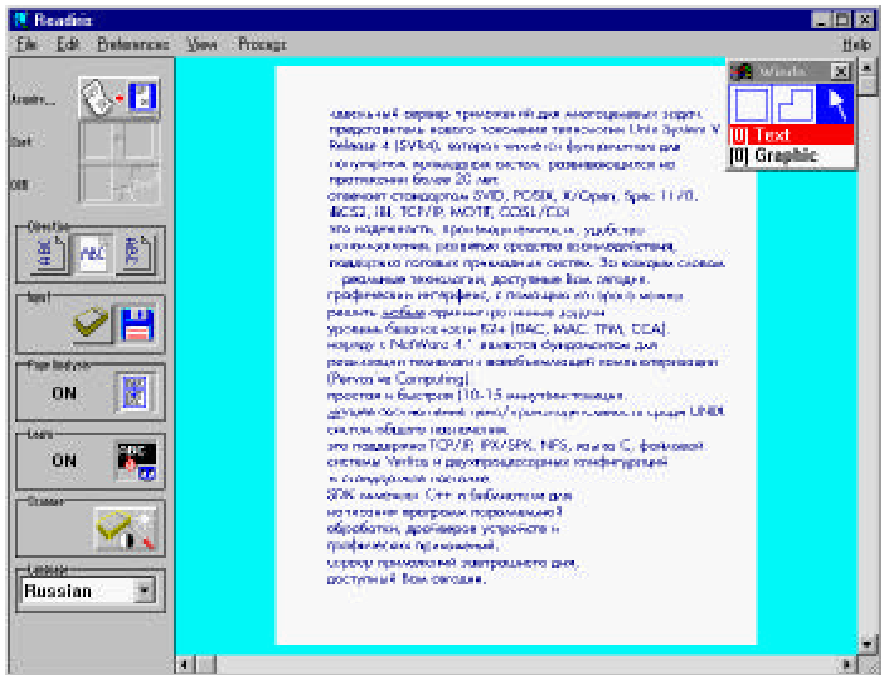
Let us stress again that linguistic databases play a positive role in the recognition, and that selecting the correct language is imperative to obtain good OCR results! There's a real advantage to be had by indicating whether you canceled your traveling arrangements or cancelled your travelling arrangements.

A more advanced feature is this: Readiris 3.95 can switch languages in the middle of a sentence without any help from the user! When Western text pops up in Greek and Russian documents - many untranscribable proper names, brand names etc. are in most cases written using the Western symbols - Readiris will switch to the correct alphabet automatically.

Here's an example where a Russian text is littered with technical English words.

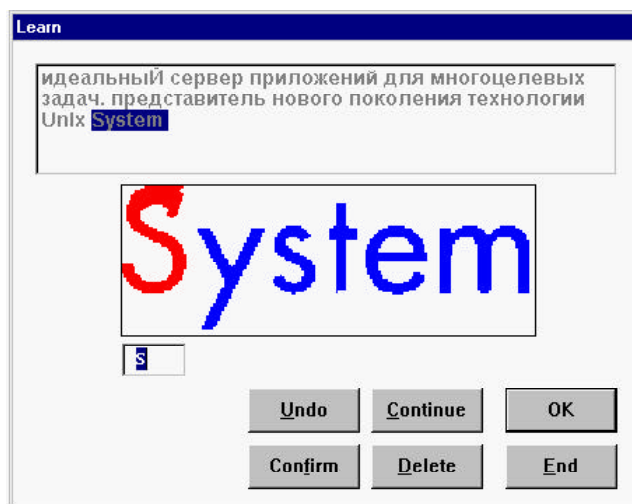


## RELEASE NOTE 3.95

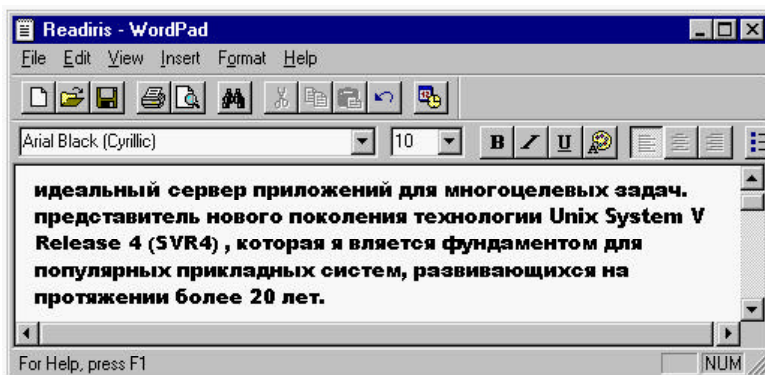


Be sure to select Greek or the appropriate Cyrillic language with the "Language" button on the button bar before you launch OCR, because you can only get mixed alphabets in those languages. In other words: don't try to read these texts as Western documents and hope that the Cyrillic or Greek symbols will come out fine!

Given our example, we choose "Russian" as language. As we're going through the interactive learning, Western symbols are effortlessly presented for verification by Readiris in conjunction with Cyrillic characters.



The end result looks like this when opened with the wordprocessor - be sure to select a Cyrillic font to display the Russian text correctly.



## **LEARNING MORE ABOUT IT**

---

So much for the novelties of Readiris 3.95! To learn more about it all, and to stay informed about the upcoming developments of Readiris, you are recommended to register as a Readiris user. You can also register by getting in touch with our support team at the e-mail address *support@irislink.com*.