

WashAndGo

Handbook



Abelssoft GmbH

contact@abelssoft.net

<http://www.abelssoft.net>

WashAndGo - Handbook

Shareware- and Full version



Abelssoft GmbH

Dear Customer,

this handbook will give you a detailed description of WashAndGo and its functionality. In case that you need any additional assistance, please feel free to contact us via e-mail at Contact@abelssoft.net, or please visit our website: <http://www.abelssoft.net>. Our website will also provide you detailed information about updates.

Table of Contents

Introduction	4
Welcome to WashAndGo 2008 - First Steps	5
Application Center.....	6
EasyClean Status Bar	6
Scheduler Status Bar.....	7
Start Center Items.....	7
Perform EasyClean	7
Configure EasyClean – option (EasyClean Wizard)	8
View Details – Tab.....	11
Schedule EasyClean – Option.....	11
User Interface and Navigation	13
Scanning and Cleaning with WashAndGo	14
Clean System Tab: Free Disk Space	15
Remove Garbage Files:	15
Empty Temp Directories	15
Prefetch Files Cleaner	15
Empty MS Setup Cache	16
Minidump File Cleaner.....	16
Extra Temp Folders	16
Clean System Tab: Correct Errors.....	16
Correct Registry Errors.....	16
Find Incorrect File Links	16
Correct Uninstall Entries	17
Application Trace Cleaner Tab: Clean System Traces	17
Windows Explorer Cleaning.....	17
System Cleaner	18
Application Trace Cleaner Tab: Office Traces	19
MS Office Cleaner	19
OpenOffice Cleaner.....	20
Application Trace Cleaner Tab: Application Traces.....	20
Internet Cleaner Tab	20
Browsers: Internet Explorer, Opera, Firefox, Safari.....	21
Clean Cache.....	21
Clean Cookies.....	21
Clean History.....	21
Tools & Information	22
Folder Visualizer.....	22
Windows Tools.....	24
Uninstall Programs	25
File Shredder	25
File Unlocker	25
Backups & Protocols.....	26
Manage WashAndGo Backups	26
Manage Restore Points.....	26

View Protocols	27
Liability / Warranty	27
Contact.....	28

Introduction

WashAndGo: The “scrubbing brush” for your PC’s hard drive.

Most PC users protect their computer from viruses and care about a weekly backup. Unfortunately, this is not enough. To **keep your hard drives spick and span**, it is necessary to clean it regularly. WashAndGo was designed to assist you with this task. IT **cleans your PC** from unneeded data and frees disk space by removing garbage.

Almost everyone, who hasn't tidied up his computer for a long time, is shocked at the amount of superfluous files stored on the own PC without his knowledge. WashAndGo finds those files and tells users how much disk space has been freed, so the benefits of running the software can be seen immediately.

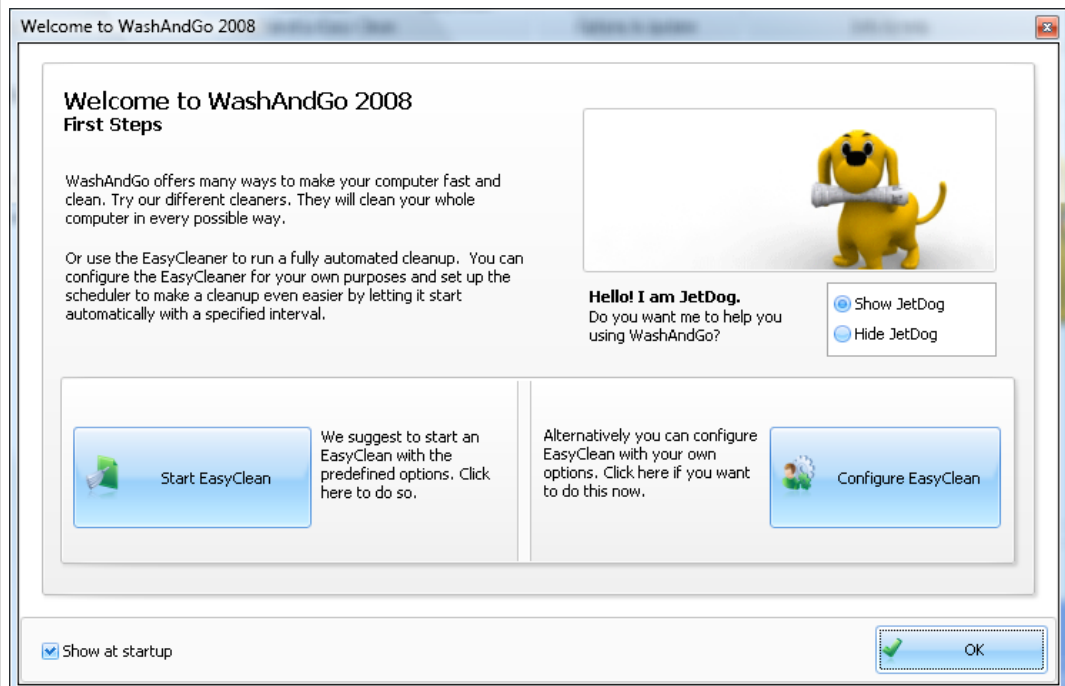
Garbage files that can be removed by WashAndGo include temporary files not removed when programs are closed, old file safety copies which are created automatically by some programs, 0-byte files with no real content, wrong and confusing Windows Registry entries, duplicate DLL libraries, superfluous and outdated service pack files, wrong Uninstall entries and Internet Explorer, Opera and Firefox browser caches.

A single mouse click makes WashAndGo start examining the hard disk. Users then review a list of detected garbage files and authorize WashAndGo to remove them. Users who prefer to be on the safe side can switch on the security option of WashAndGo to enable the recovery, if required, of all removed files for up to 14 days after the clean up.

WashAndGo has won a huge number of awards and it is improved continuously. The whole procedure takes about 3-5 minutes but gives you back a massive amount of space. It's fast, secure and reliable!



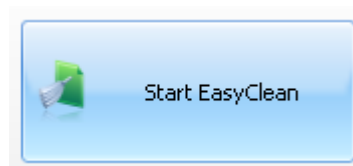
Welcome to WashAndGo 2008 - First Steps



When starting WashAndGo for the first time, you will see a Welcome screen giving you a quick access to the most important functionality of WashAndGo: Our EasyClean functionality, which allows you to keep your PC clean and fast with just one mouse click.

Perform EasyClean

Choose this option, if you want to clean your system from garbage by using our recommended cleaning-settings.



Configure EasyClean

WashAndGo allows you to precisely specify the elements that should be cleaned. For example, if you do not want to clean your Browser Cache, then you may use the "Configure EasyClean"-Button to change the EasyClean settings and to adopt it to your personal needs. Clicking on the configuration button will launch a configuration wizard which will be explained at a later stage of this documentation.

Alternatively you can configure EasyClean with your own options. Click here if you want to do this now.

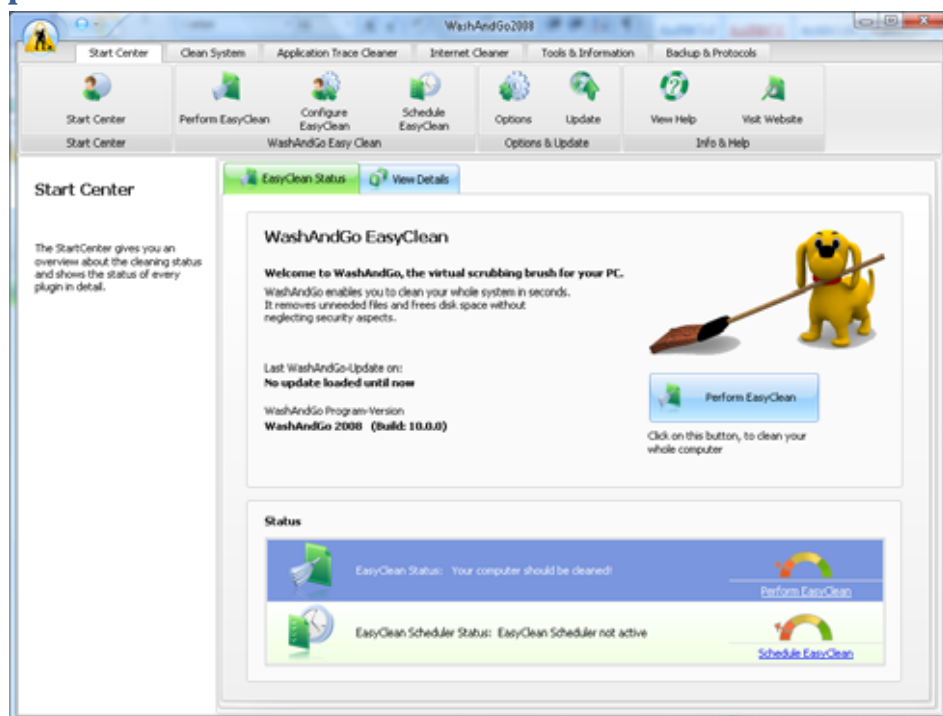


Configure EasyClean

Furthermore, our welcome screen allows you to choose if you want to use a small helper called JetDog as a virtual guide through WashAndGo. JetDog is a small virtual animal you can select Jetdog as your companion for the program. You may either select “Show Jetdog”, which means that the little dog will guide you. Or you may select “Hide Jetdog”, which will not show JetDog for you. – Whatever you select, WashAndGo will not be influenced in its functionality. The selection of JetDog is a pure interface setting.

If you select the “OK”-Button it will lead you directly to the “Application Center” of WashAndGo without choosing any cleaning-options.

Application Center



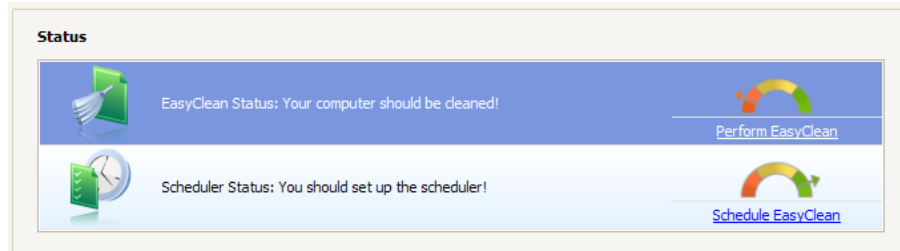
This is the main screen of WashAndGo. At this point you may get information about the cleaning-status of your system and you may launch all cleaning functions.

EasyClean Status Bar

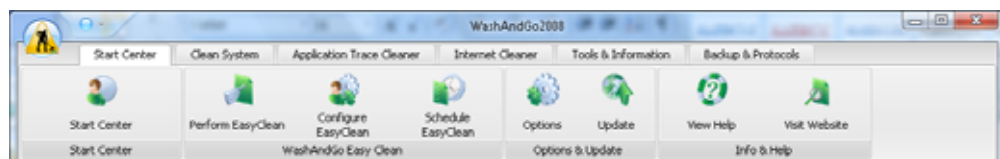
If the arrow at the EasyClean Status bar is pointing to a red area then it is recommended to use WashAndGo to clean up your system. After running the clean-up process it stays on the green area for 7 days. Afterwards it will turn yellow for another 13 days. After 20 Days it turns to red.

Scheduler Status Bar

The Scheduler allows you to start WashAndGo automatically. If the Scheduler is not configured, the scheduler status indicator will be on the red area. Otherwise it will point to the green area.



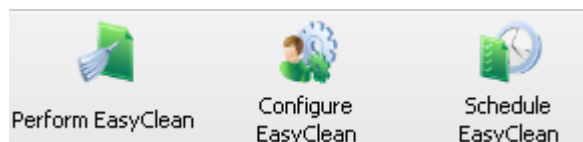
Start Center Items



The “Start Center”-Bar offers you the following options:

1. Start Center – This brings you back to the main screen
2. WashAndGo Easy Clean
 - Perform EasyClean
 - Configure EasyClean
 - Schedule EasyClean
3. Options & Update
 - Options
 - Update
4. Info & Help
 - View Help
 - Visit Website

Perform EasyClean

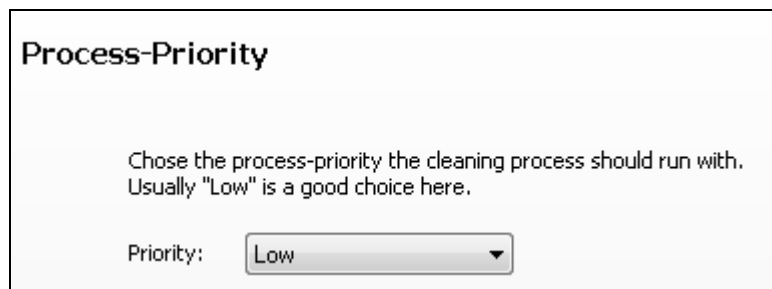


With the Button “Perform EasyClean” you start the standard cleaning process of WashAndGo with its predefined configuration. This enables you to clean your whole system by just one mouse click. It removes unneeded files and frees disk space without neglecting safety aspects.

Configure EasyClean – option (EasyClean Wizard)

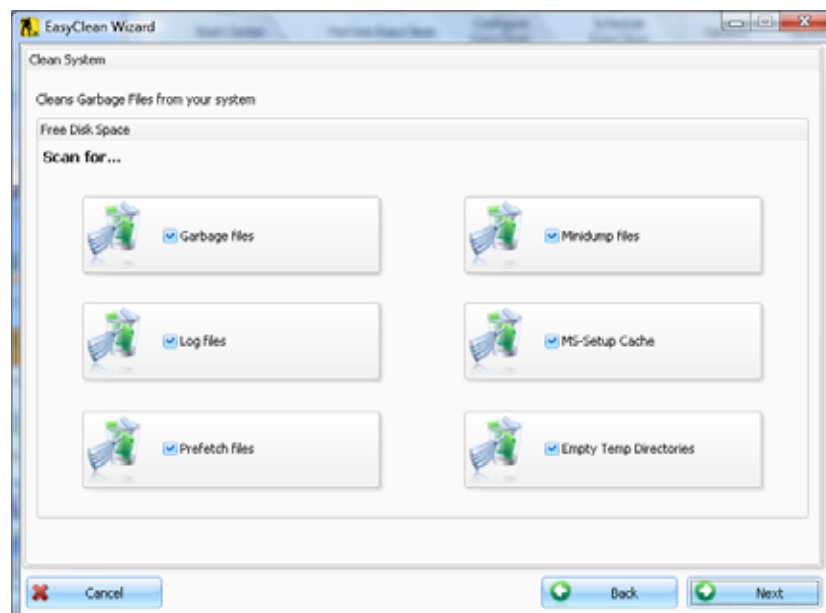
WashAndGo allows you to precisely specify the elements that should be cleaned. For example, if you do not want to clean your Browser Cache, then you may use the “Configure EasyClean”-Button to change the EasyClean settings and to adopt it to your personal needs.

As the first option, the EasyClean Wizard allows you to configure the priority of WashAndGo. This is useful if you tend to run WashAndGo automatically on startup or in the background using the Scheduler.



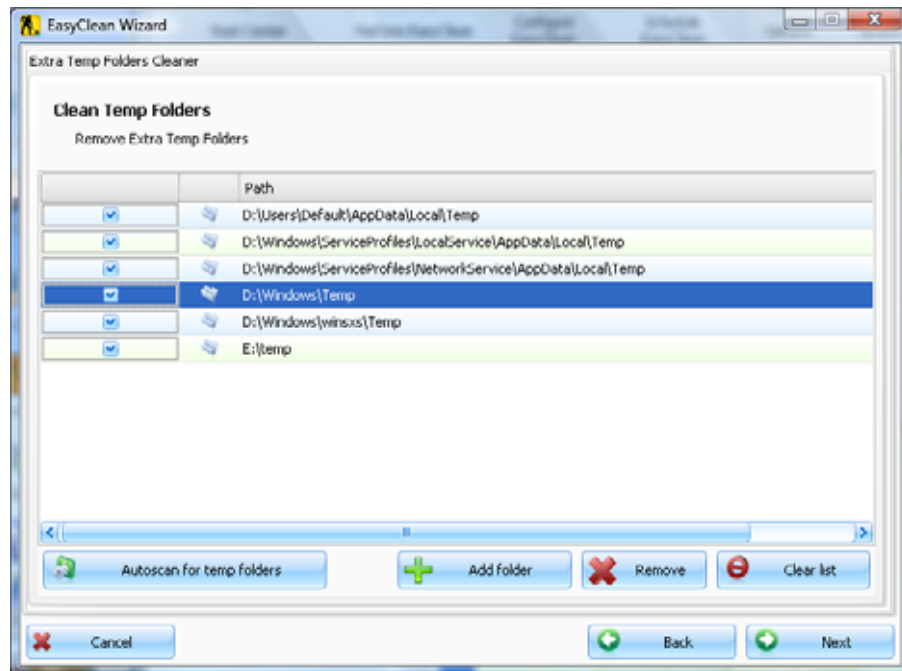
In the following steps, you will be able to choose, which kind of cleaning operations should be considered by WashAndGo

The first selection screen gives you the chance to select those entries that allow WashAndGo to free disk space by removing unnecessary garbage files. The possible choices are: “Garbage Files”, “Log Files”, “Prefetch Files”, “Minidump-Files”, “MS-Setup-Cache”, or “Empty Temp Directories”.



Once you have pressed the “Next”-Button you will have the opportunity to select folders which you would like to add to the cleaning process by yourself. These folders will be emptied by WashAndGo along the cleaning process. This functionality is useful

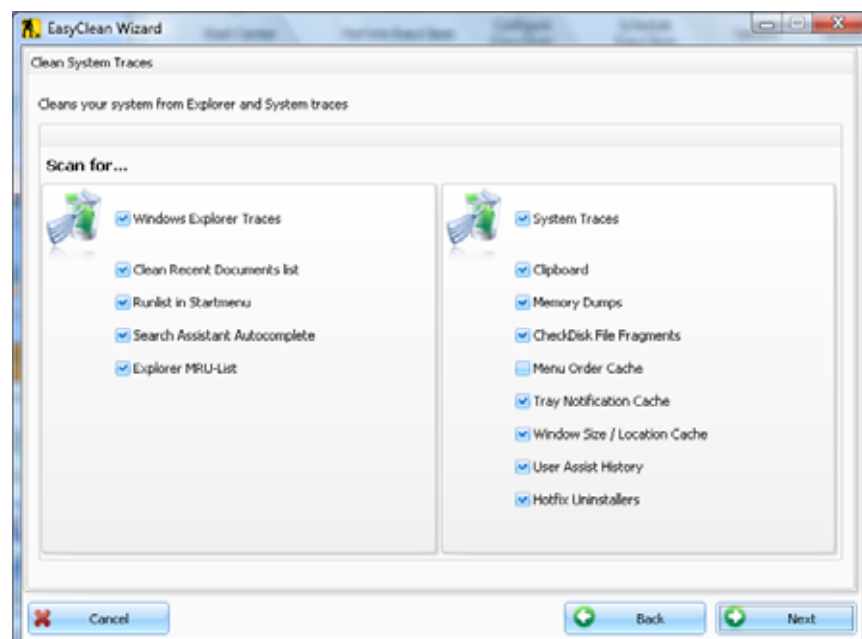
if you have own temp folder that you use for storing temporary items. WashAndGo will clean each of those temp folders for you. WashAndGo also provides a mechanism to automatically detect such temp folders. Click on “Autoscan for temp folders” to scan for typical temp folder candidates.



Attention: Please beware of the fact, that added folders will be cleaned completely. Please, do only add folders which you really want to empty.

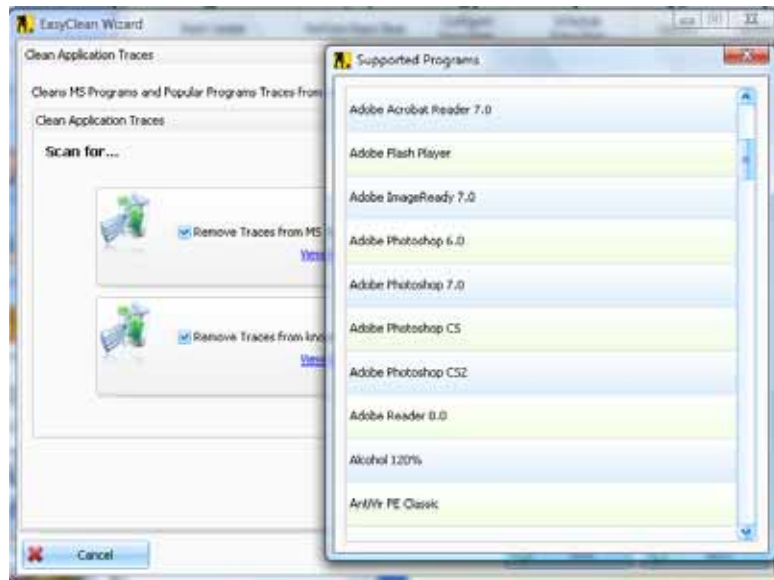
In the next step, WashAndGo gives you the opportunity to choose if you want WashAndGo to scan for Registry Errors and invalid shortcuts.

If you go one step forward, then you will be able to clean your system from explorer- and Windows traces.

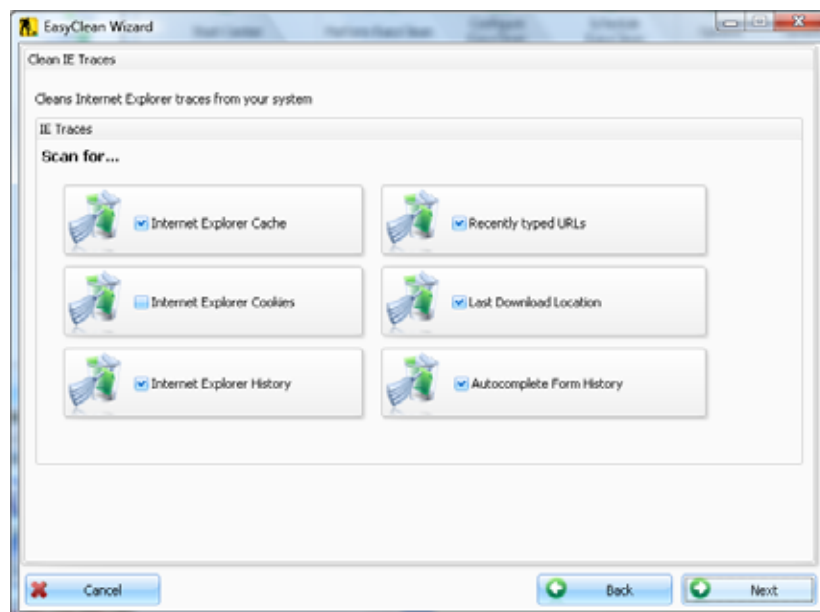


The next step will allow you to select versions of Microsoft Office that should be cleaned by WashAndGo followed by the same possibility for the OpenOffice Suite.

Clicking on “Next” will allow you to choose if WashAndGo shall remove traces from popular applications and from Microsoft components. WashAndGo supports hundreds of applications which you may view by clicking on the corresponding link.

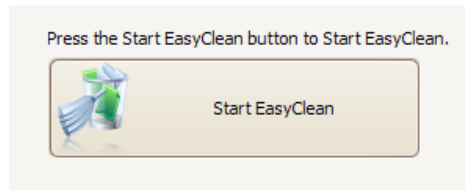


WashAndGo gives you the opportunity to clean your system from Internet-Explorer traces so that you can protect your private data. This includes: “Cache”, “Cookies”, “History”, “Recently Typed URLs”, “Last Download Location” and “Autocomplete Form History”.



The same search for traces can be performed for the opera browser, or mozilla browser as well as for other browsers such as Safari.

After these recent option-configurations you can start the EasyClean process by pressing the “Start EasyClean” - Button. Alternatively, you may click on “Finish” to get back to the main menu of WashAndGo.



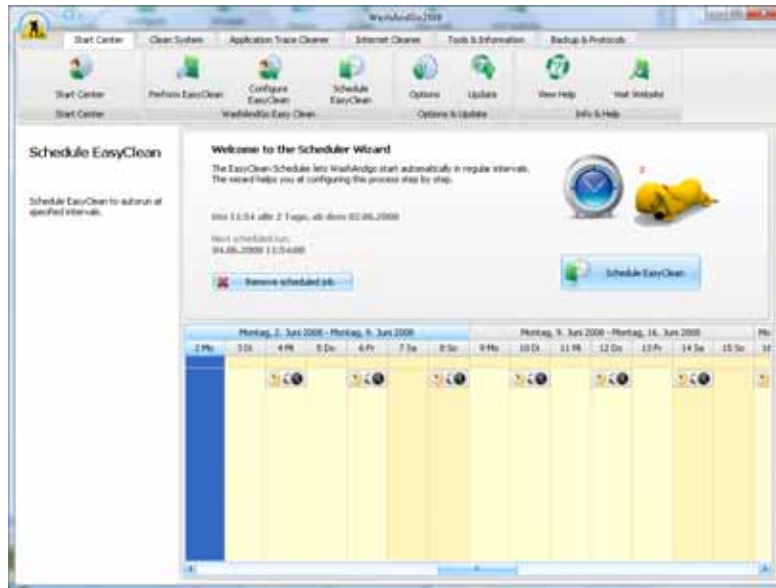
View Details – Tab

With the help of the “View Details” tab of the main menu, you may see the detailed status of each cleaning option supported by WashAndGo. According to this you can decide which cleaning options should be performed. You may doubleclick on an entry to directly go to the corresponding cleaning menu.



Schedule EasyClean – Option

With the help of “Schedule EasyClean” you will be able to manage your cleaning options in a timetable / calendar. This process is similar to setting an alarm clock. It allows you to execute WashAndGo automatically allowing you to e.g. clean your system on Windows start or at a specific time (e.g. one a week). This will make it very comfortable for you to keep your system free of garbage and to ensure that your PC is in an optimized state.

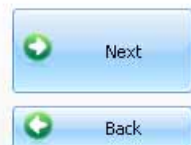


How to use the Scheduler

Using the “Schedule EasyClean” button leads you to a new screen where you can specify when to execute WashAndGo automatically for you. This event can be the timeplan that you may configure, or the start of windows (user logon). You may choose these options per as the first step after clicking on “Schedule EasyClean”.

1. Please choose a method

- ☒ Schedule by time
- ☐ Start on every logon

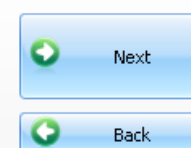


Afterwards you can decide if the cleaning process on your system should be performed daily (“Start EasyClean on a daily basis”) or weekly (“Start EasyClean on a weekly basis”)

On step 3 you have the opportunity to set the time, the day/days and the week-cycle for the cleaning performance.

3. Please choose the time and recurrence

- Time:
- ☒ Every day(s)
- ☐ Every week day

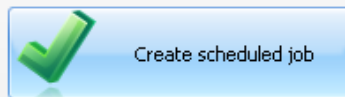


That's all. - To finish the configuration click on the "Create scheduled job" Button. In case of using a laptop, you may select that WashAndGo is not automatically executed if your system is running on batteries.

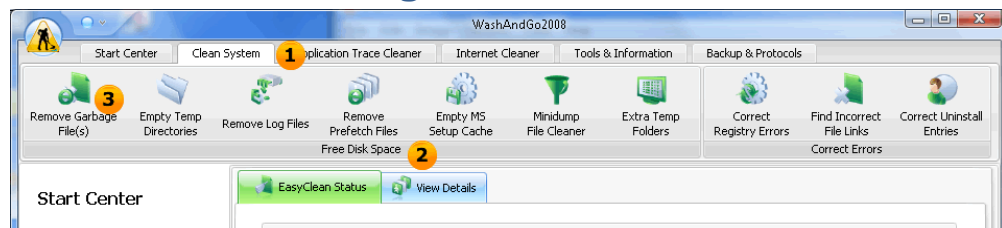
Now the configurations are completed. The new surface offers you a further option: You can avoid the start of the cleaning process when your computer runs on batteries.

Finished. Please click on the button below to schedule the job.

☒ Do not start, if computer runs on battery.



User Interface and Navigation



WashAndGo allows you a very easy usage of all its power by using the EasyClean functionality, which you may even execute automatically using our scheduler.

However, in case that you do not want to use the EasyClean functionality, then you may call all cleaning options manually if you want. WashAndGo arranges them into different tabs. Those tabs are marked with **1** in the screenshot. WashAndGo contains the following tabs:

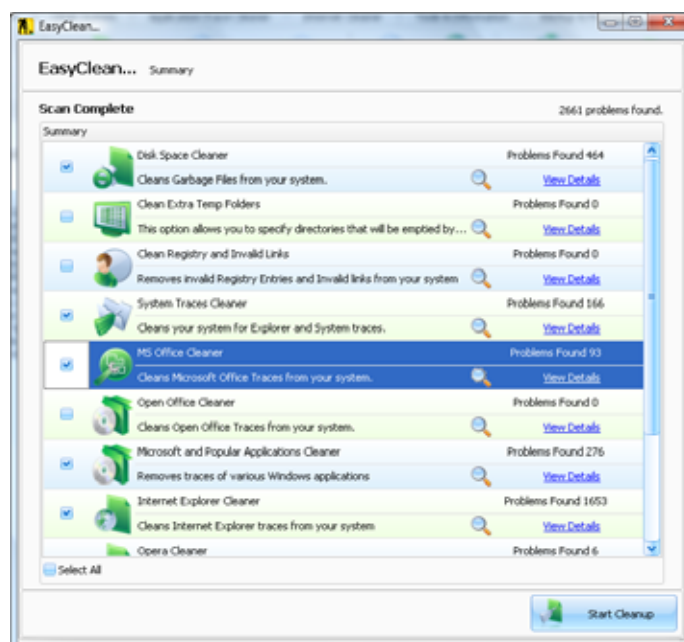
Tab Name	Meaning
Start Center	Provides a quick access to the most important functions and the main screen.
Clean System	Contains functionalities to clean your system and to free disk space. This also contains Functionalities to correct errors such as Registry errors.
Application Trace Center	Provides possibilities to removes traces from your PC including traces from Microsoft Windows components as well as from Office Suites and popular Applications.

Internet Cleaner	Contains functionalities to clean web browsers such as the Internet Explorer, Firefox, Safari or Opera.
Tools & Information	Those elements contain helpful tools such as a Space Explorer (Folder Visualizer) or a File Shredder.
Backup & Protocols	This tab provides a quick access to protocols allowing you to see what WashAndGo has done. You can also undo changes or restore Windows Restore Points.

Each of those tabs is grouped into some logical sub sections marked with **2**. For example, the “Clean System” tab is grouped into “Free Disk Space” and “Correct Errors”. Each of those groups then contains several buttons allowing you to launch the specific cleaning process. Those buttons are marked with **3** in the above screenshot.

Scanning and Cleaning with WashAndGo

When using one of the cleaning methods of WashAndGo, then the program will show you a progress bar telling you the exact part that WashAndGo is working on. Afterwards, WashAndGo compiles you a list of elements that have been found on your hard drive as listed in the screenshot below. You may now select or deselect specific elements or you may click on “show details” to see a detailed list of elements that have been found by WashAndGo. However, in most cases, you may simply click on “Start Cleanup” to clean your system by removing the elements that WashAndGo has found for you.

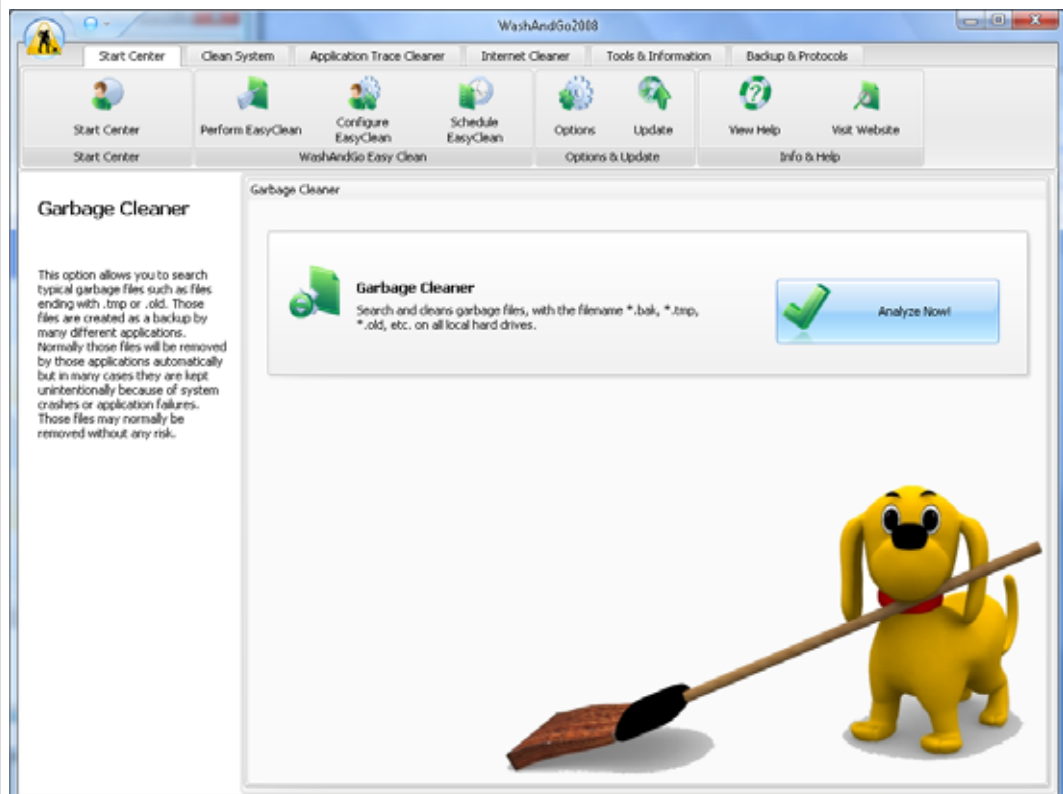


Clean System Tab: Free Disk Space

The first tab is called “Clean System”. It contains functionalities to clean your system and to free disk space. This also contains Functionalities to correct errors such as Registry errors.

Remove Garbage Files:

This option allows you to search typical garbage files such as files ending with .tmp or .old. Those files are created as a backup by many different applications. Normally those files will be removed by those applications automatically but in many cases they are kept unintentionally because of system crashes or application failures. Those files may normally be removed without any risk.



Empty Temp Directories

This option empties so called temp directories. Those directories contain temporary files that may be deleted without influencing your system. Temporary directories may waste a lot of precious space on your hard drive, so it is recommended to empty those directories on a regular base.

Prefetch Files Cleaner

This option cleans so called prefetch files. Prefetch files are created by Windows in order to speed up your application start. This is generally a good idea but it may result in a large number of prefetch files being located in your Windows directory and wasting space. It is recommended to empty the prefetch cache from time to time. This will force Windows to recreate those prefetch files that are really needed on system startup and it will remove those prefetch files that are not needed.

Empty MS Setup Cache

This cleans MS Setup Cache files. Whenever you install a Microsoft-Application such as Microsoft Office, the Office setup application creates a cache that allows Microsoft to start the startup a little bit faster next time it is executed. However, as soon as you have installed your Windows-Application correctly, you should better remove those cache files since they may use up to several hundred MB without any advantages.

Minidump File Cleaner

This cleans minidump files. Those Minidump files are created whenever Windows or an Application crashes. They can be seen as a small “memory dump” of your PC and they may use a lot of space meaninglessly. It is therefore recommended to remove those files once your system has been booted correctly.

Extra Temp Folders

This option allows you to specify directories that will be emptied by WashAndGo automatically. Several Windows applications create own temp directories adding garbage files to them. This option of WashAndGo is a handy way to add those temp-directories manually if you know them.

WashAndGo has a build-in feature allowing you to scan for potential candidates of those extra temp-directories automatically if you want. Simply click on 'Autoscan for temp folders' if you want to use this feature.

Attention: Please beware of the fact, that added folders will be cleaned completely. Please, do only add those folders that you really want to empty.

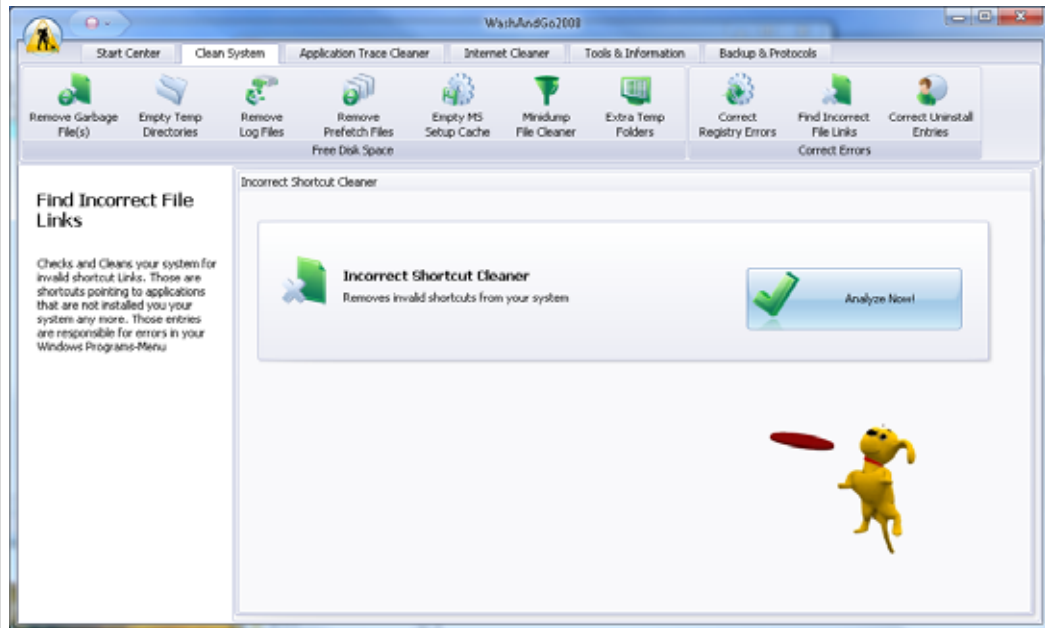
Clean System Tab: Correct Errors

Correct Registry Errors

This option scans and analyses the entire Windows Registry in order to check it for consistency errors. In case of any errors, WashAndGo allows you to correct them with a single mouse click. A fast recognition of missing and illegal references will be performed by WashAndGo for you.

Find Incorrect File Links

Checks and Cleans your system for invalid shortcut Links. Those are shortcuts pointing to applications that are not installed on your system any more. Those entries are responsible for errors in your Windows Programs-Menu.



Correct Uninstall Entries

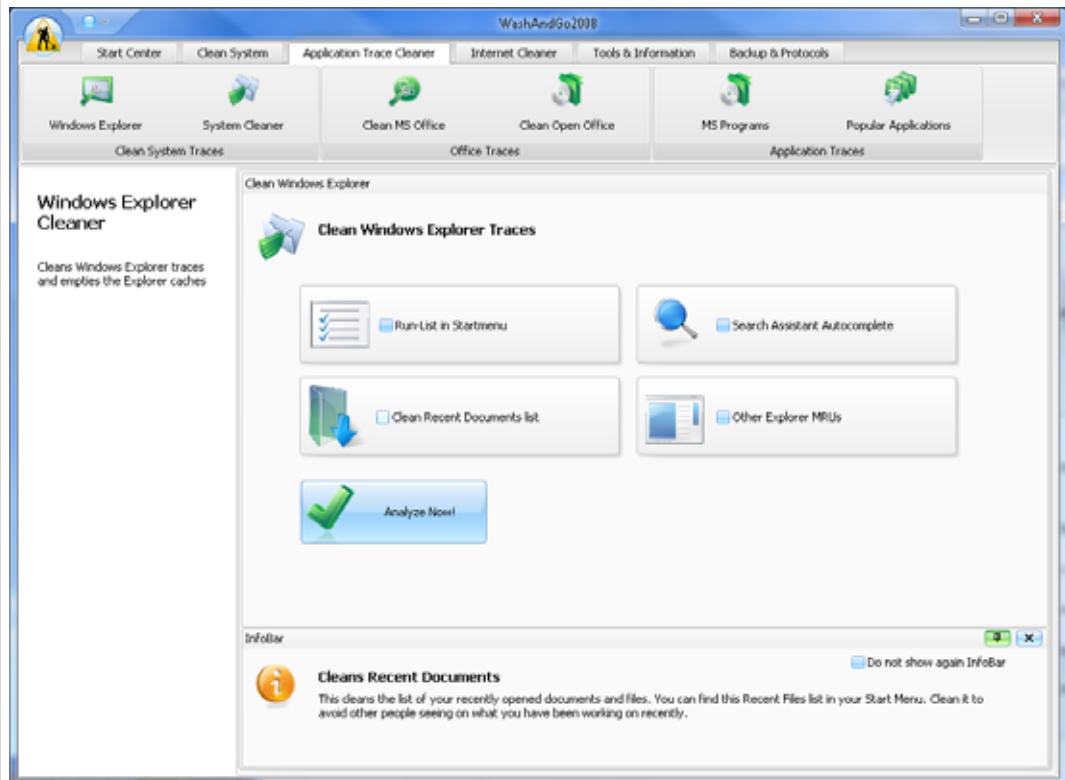
This cleaner checks your system for invalid uninstall entries. Those are entries listed in your Windows Control Panel showing you all programs that you have installed on your PC. WashAndGo validates those entries and finds entries that are not valid any more. Those invalid entries may be removed by WashAndGo for you.

Application Trace Cleaner Tab: Clean System Traces

Windows Explorer Cleaning

Using Windows usually results in a huge amount of traces being stored on your PC. WashAndGo is capable of cleaning those traces. WashAndGo supports the following traces:

- Run-List in Start Menu – Cleans the list of recently started applications in your Start Menu
- Search Assistant Autocomplete – Cleans the search list that appears when using the Windows search functionality
- Recent Documents List – Cleans the list of recently opened documents allowing other people to see which documents you have read in the last days.
- Other Explorer MRUs – Cleans miscellaneous traces that Windows stored in the Windows registry system.



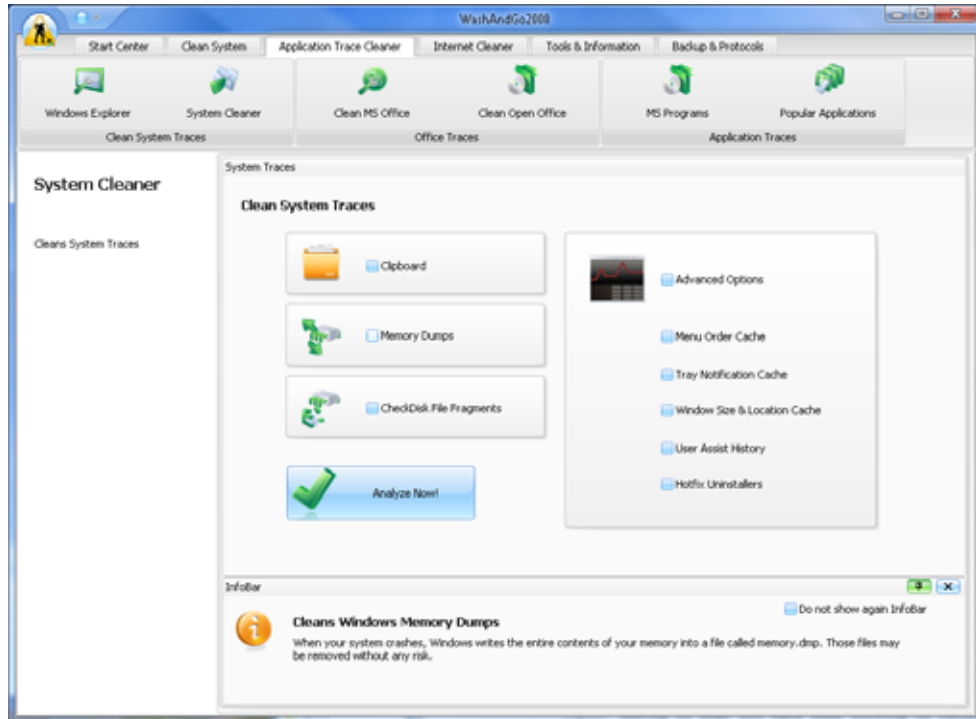
System Cleaner

The System cleaner provides functionality to clean some general system components:

- **Clipboard:** This removes the current clipboard content.
- **Memory Dumps:** When your system crashes, Windows writes the entire contents of your memory into a file called memory.dmp. Those files may be removed without any risk.
- **CheckDisk File Fragments:** If CheckDisk tries to repair fragments of your hard disk, it backups these fragments on your disk before. However, those files are never deleted and may be removed after a while.
- **Menu Order Cache:** Windows saves the order of entries in your start menu within the Registry. If you want to rearrange the entries alphabetically, select this option.
- **Tray Notification Cache:** Cleans the list programs that are located in your system Tray. This works only if you restart your explorer.exe immediately after cleaning, because otherwise the Cache is being rewritten by Windows automatically.
- **Window Size & location Cache:** Windows saves the position and size of each program that you start. Delete this cache to let programs start with the default size and position.
- **User Assist History:** Windows saves a lot about the usage of this computer. For example, if you run a Control Panel Applet, it will be saved in the Registry. You

should delete such traces.

- Hotfix Uninstallers: There is an Uninstaller created for every Update and Hotfix of your Windows System. Remove them to get more free space. You will not remove the Hotfix itself. Only the Backup Data will be removed.



Application Trace Cleaner Tab: Office Traces

MS Office Cleaner

MS Office stores many links to files you have opened recently. This makes it easy for people to detect the documents you have been working on. Delete those traces now. WashAndGo supports

- MS Works 4.0
- MS Office 97
- MS Office XP
- MS Office 2003
- MS Office 2007

Cleaning MS Office will include all MS Office programs such as removing traces and unnecessary data from Word, Excel, Access and Outlook.

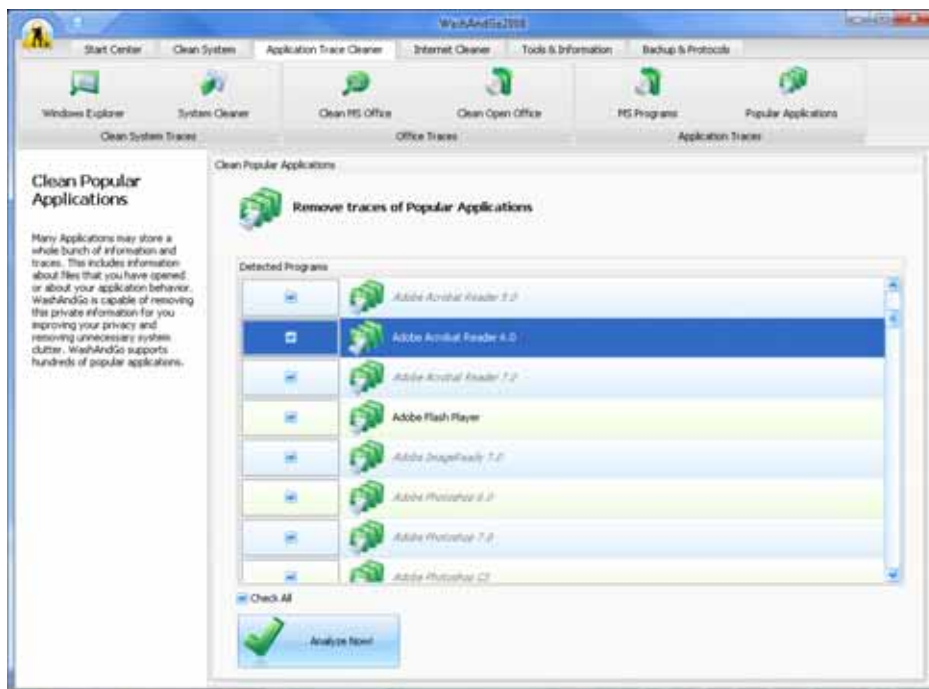
OpenOffice Cleaner

Similar to MS Office, the free OpenOffice Suite also stores many links to files you have opened recently. This makes it easy for people to detect the documents you have been working on. WashAndGo supports to clean those traces. The following versions of OpenOffice are supported:

- OpenOffice 1.1
- OpenOffice 2.0
- OpenOffice 2.1
- OpenOffice 2.4

Application Trace Cleaner Tab: Application Traces

Many Applications may store a whole bunch of information and traces. This includes information about files that you have opened or about your application behavior. WashAndGo is capable of removing this private information for you improving your privacy and removing unnecessary system clutter. WashAndGo supports hundreds of popular applications.



Internet Cleaner Tab

Internet Applications tend to collect data about the surf behavior of users. This includes the saving of surf history elements, cookies and Cache files. WashAndGo can clean all those traces easily. This allows you to ensure that no traces about your surf behavior are left behind on your desktop.

Browsers: Internet Explorer, Opera, Firefox, Safari

WashAndGo supports the following Browsers:

- Microsoft Internet Explorer (all versions)
- Opera (all versions)
- Firefox (all Versions)
- Apple Safari (all versions)

For each of those browsers, WashAndGo can clean the following elements.

Clean Cache

With the help of this option you are able to delete the cache elements of each your browser. Cache elements are created by your web browser on every visit of a web page. These files can be old and may consume a reasonable amount of disk space.

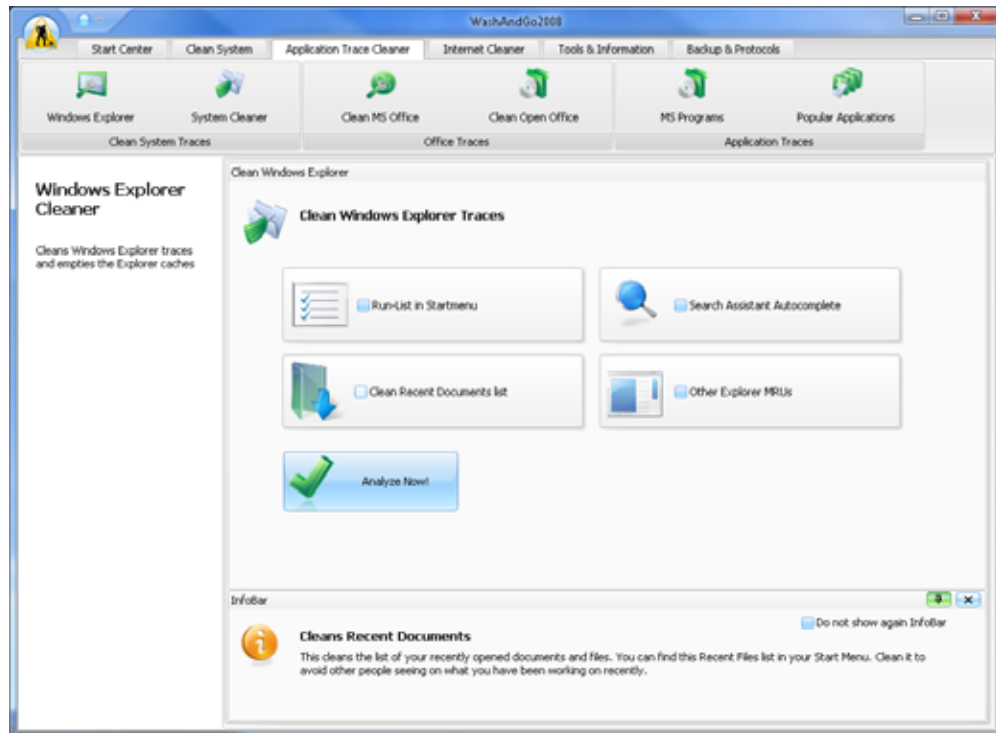
Clean Cookies

Cookies are Files that are stored on your computer by websites in order to save preferences such as login information. You may remove those files in order to gain a higher level of privacy.

Clean History

The Browser History contains a journal about the web sites that you have visited and about the data you have typed in. You may empty the history in order to ensure that the data is not misused by other persons. Depending on your Web Browser, WashAndGo supports the following History Elements:

- Internet History
- Download History
- Recently Typed URLs
- Saved Form Information



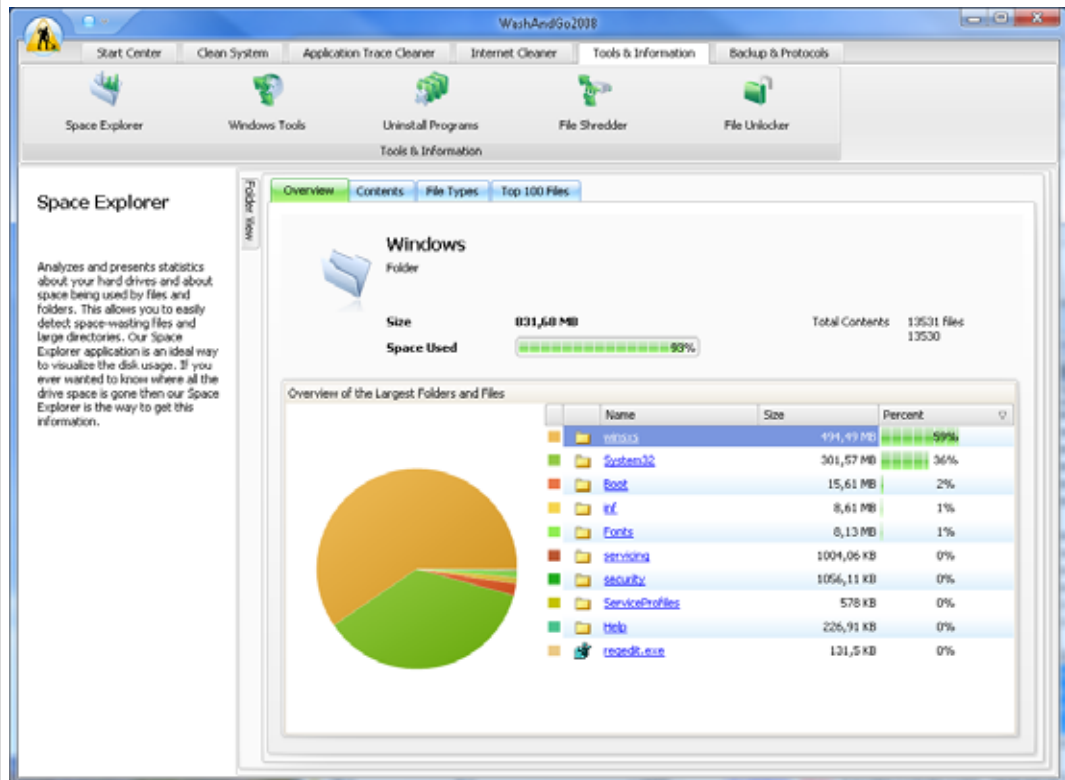
Tools & Information

The “Tools And Information” offers you different tools that allow you to optimize your system manually or that may be used to resolve problems.

Folder Visualizer

Analyzes and presents statistics about your hard drives and about space being used by files and folders. This allows you to easily detect space-wasting files and large directories. Our Space Explorer application is an ideal way to visualize the disk usage. If you ever wanted to know where all the drive space is gone then our Space Explorer is the way to get this information.

When starting the Folder-Visualizer, you may select the drives that you want to visualize. Simple check e.g. C:\ and click on the “Next” Button. Afterwards, you will see a visualization of your drive and you may click on one of the sub-folders to get detailed information about this specific folder and its subfolders.



Within the Folder Visualizer, you may find the following Tabs.

Overview

The “Overview” tab shows you the disk-space-capacity of the disk-drives (“Size”), the used disk-space (“Occupied Space”) and the “Free Space”. It also shows you which directories are using how much space.

Contents

This tab gives you some metrics. It allows you to easily find those directories and files that are using most of the space of your hard drive.

Overview	Contents	File Types	Top 100 Files
Name	Size	Percent	Type
winSxS	494,49 MB	59%	Folder
System32	301,57 MB	36%	Folder
Boot	15,61 MB	2%	Folder
inf	8,61 MB	1%	Folder
Fonts	8,13 MB	1%	Folder
security	1056,11 KB	0%	Folder

File Types

This tab allows you to filter the results and to quickly see all images, documents, video files, etc.

Top 100 files

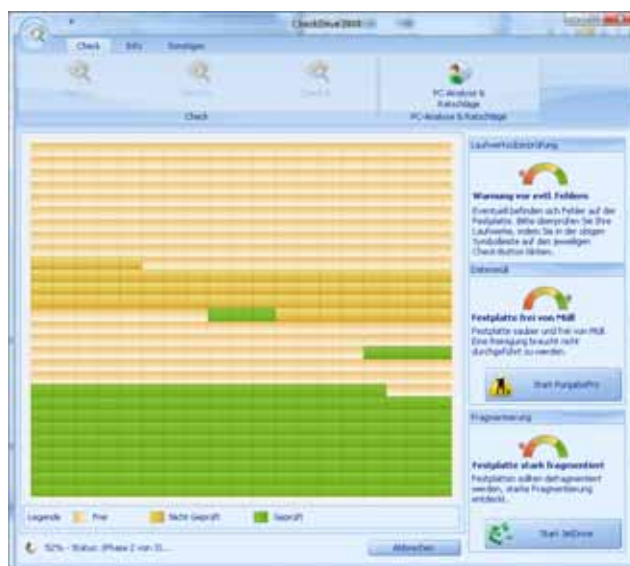
Similar to the “Contents” tab, this tab may be used for finding “space wasters”. However, instead of showing files and folder and subfolders, the Top 100 files concentrates on listing the concrete files by showing the 100 most space consuming files on your hard drive.

Windows Tools

This Plugin invokes some Windows Tools. Those tools are build in into the Windows-System but they are usually hard to find. WashAndGo can launch them for you in a well structured menu. You may choose between the following elements:

Here you can choose the following options:

- Launch Defragmentation / JetDrive: Defragmentation speeds up your disk by re-arranging all data in a way that is can be accessed by Windows in an optimal way. WashAndGo may launch the standard Window-Defrag or our high-performance JetDrive solution (<http://www.abelssoft.net/jetdrive.php>).
- Launch CheckDisk / CheckDrive: This tool checks your hard disks for physical errors. Windows has a build-in tool for this. If you would like to use a more comfortable error-checker then we recommend to try our free tool CheckDrive (<http://www.abelssoft.net/checkdrive.php>)
- Microsoft SFC-Tool: Check and repair your System with the Microsoft SFC-Tool. Windows holds a cache with important systemfiles. If one of them is damaged, you can repair it with this tool. Be sure you have your Windows CD/DVD ready to hand.
- Empty Recycle Bin: This will empty the Windows Recycle Bin for you.
- Launch System Info Tool: This will launch a build-in System Information Tool from Microsoft.



CheckDrive 2008

Uninstall Programs

The option “Uninstall Programs” allows you to uninstall programs or to remove invalid uninstall-entries.

A list of the programs and entries of your system is shown. You may directly choose them and uninstall one of them by choosing “Uninstall Program”.

With “Remove Entries” you can delete entries. This is very useful when the program is uninstalled but the entry is still there on your system. You may use this button to remove an entry from the list without uninstalling it.

File Shredder

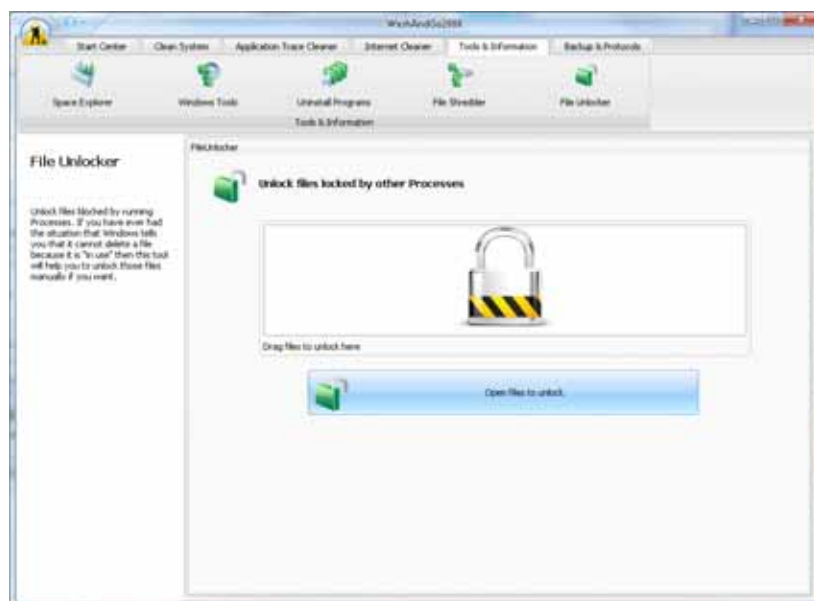
Delete unwanted files/folders completely with our File Shredder. This allows you to remove files in a way that they cannot be restored by any third party or by undelete-tools. This is a handy way to be sure that you really delete sensitive information from your hard drive.

With “Add Folder” and “Add File” you have the possibility to add them to a list. Alternatively you may also drag and drop files from the Windows explorer to add them to the list.

Files will be overwritten many different times in order to ensure that they cannot be recovered any more.

File Unlocker

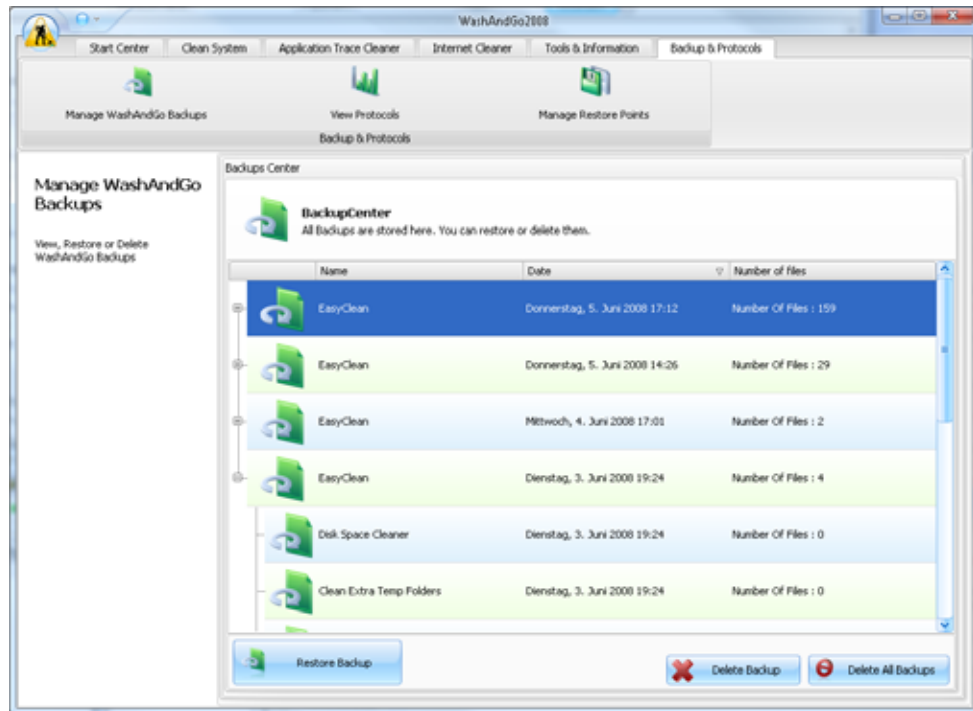
Unlock files blocked by running Processes. If you have ever had the situation that Windows tells you that it cannot delete a file because it is “in use” then this tool will help you to unlock those files manually if you want.



Backups & Protocols

In order to be able to track activities and to provide a high security, WashAndGo provides three different solutions at the “Backup & Protocols”-Tab:

1. Management of WashAndGo Backups
2. Management of Protocols
3. Management of Microsoft Windows Restore Points



Manage WashAndGo Backups

WashAndGo provides a very sophisticated and highly effective backup system that is tightly integrated into all parts of the program. In WashAndGo every activity can be undone. Simply click on “Manage WashAndGo”-Backups to see the activities ordered by date.

WashAndGo has been evaluated in detail and we have over 14 years of experience in this domain. However, if you ever want to undo a specific action then you may simply select one of the entries and click on “Restore Backup”. Afterwards, all files and all registry entries will be at their original position.

WashAndGo will keep all files for 14 days by default. You may change this entry in the Options Menu of WashAndGo.

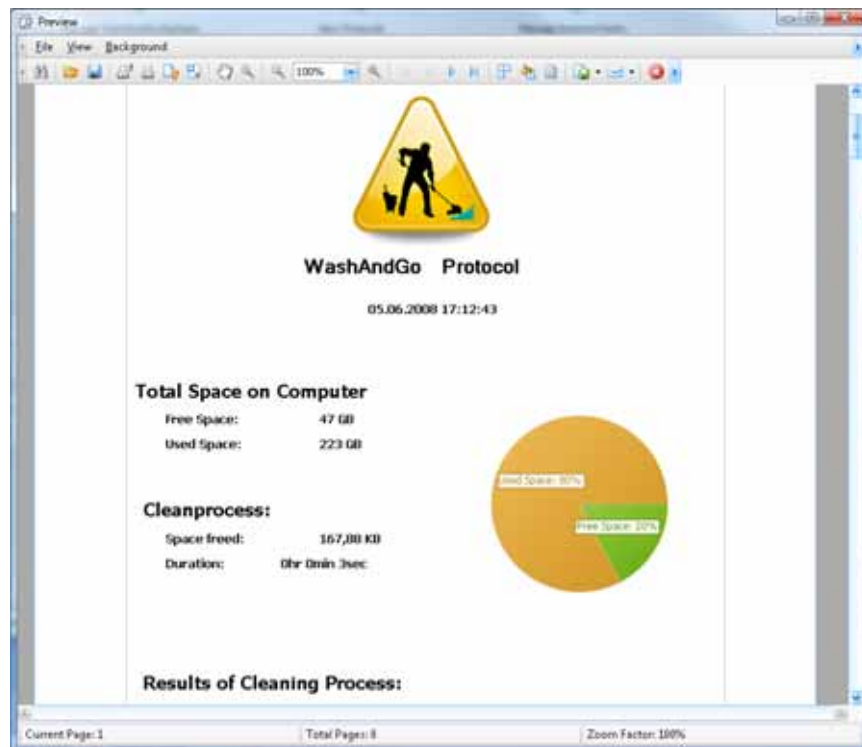
Manage Restore Points

In addition to the WashAndGo-Backups, you may also use a functionality that is build in into Windows and which is called a “Windows Restore Point”. This functionality allows Windows to create a small snapshot of the most important system files.

WashAndGo can manage those files. Simply click on “Manage Restore Points” and you will be able to create a new restore point or to restore an existing one.

View Protocols

WashAndGo provides a journal for all activities and it stores a report. You may simply click on “View Protocols” and select an entry to see the details.



Liability / Warranty

The software and documentation are provided as is without warranty of any kind. The author further disclaims all warranties; including without limitation any implied warranties of merchantability, fitness for a particular purpose, and noninfringement. The entire risk arising out of the use or performance of the software and documentation remains with the user. In no event shall the author be liable for any consequential, incidental, direct, indirect, special, punitive, or other damages whatsoever (including, without limitation, damages for loss of business profits, business interruption, loss of business information, or other pecuniary loss) arising out of this agreement or the use of or inability to use the product, even if the author has been advised of the possibility of such damages. - You use it at your own risk.

Contact

You may download the latest version of WashAndGo at <http://www.abelssoft.net>

You may reach us at any time...

...via postal mail:

Abelssoft GmbH

Langeooger Str.2

D-27755 Delmenhorst

...via E-Mail:

contact@abelssoft.net