

QuizMe 1.0

8 november 2000
nosleep software
<http://www.nosleep.net>

This is the user manual for QuizMe and explains its features, options, and how to use it.

Table of Contents

Page	Topic
3	Introduction
4	Getting Started
5	Taking a Quiz
7	Revision History
7	Disclaimer

Introduction

Thank you for downloading QuizMe, a self-tutor program. QuizMe allows students to import quizzes that they write from the Memo Pad application and then quiz themselves in 3 different ways: as flash cards, a multiple-choice quiz, or as a true/false quiz. QuizMe generates all three types of quizzes automatically, so you do not need to create them separately.

New versions and submitted quizzes are available at nosleep's website <http://www.nosleep.net/>. Email addresses for suggestions (please send!), comments, and bug reports are listed below:

comments: <mailto:comments@nosleep.net>

bug reports: <mailto:bugs@nosleep.net>

If you have created a quiz that you would like to share with others, just email it to the above address and we'll post it on our website.

It's totally free.

If you're currently a student, you'll definitely want to check out **Due Yesterday**. It is a really cool student organizer that helps you keep track of classes, assignments, grades, and much more. Check it out at: <http://www.due-yesterday.com>.

QuizMe requires PalmOS 3.0 or greater

Getting Started

First thing you need to do is write up a quiz in the Memo Pad application. Here's the format:

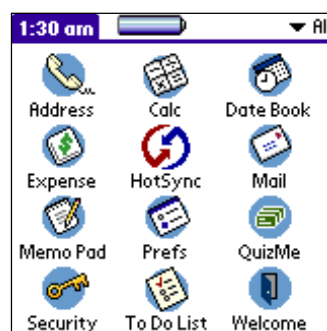
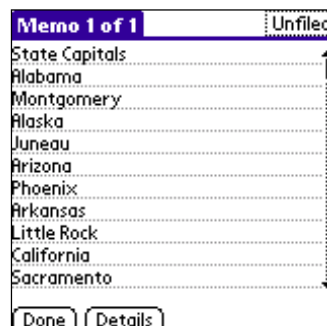
1st line: the title
odd lines: the questions
even lines: the answers

For example, you might create a memo like this:

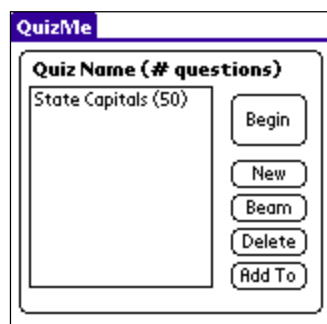
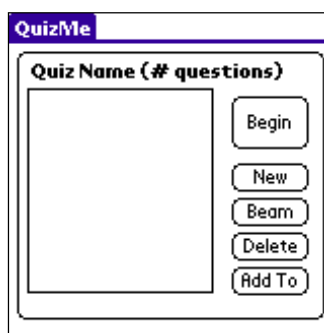
State Capitals
Alabama
Montgomery
Alaska
Juneau
....

Then once you have a quiz saved in a memo, start up the QuizMe program by tapping on its icon.

Note: to make the data entry easier, create the memo using the Palm Desktop software, and then sync it.



You will see an empty list of quizzes. To add a new quiz, tap on the **New** button. That will display the Import screen. Select the quiz memo that you created previously and tap **Import**.



You should now see your new quiz in the list.

Note: **Beam** will send a quiz to a friend over infrared, **Delete** will permanently delete a quiz, and **Add To** will add more questions to an existing quiz.

Taking a Quiz

First thing to do is setup the options for the quiz. Tap the menu button, and then select Quiz Options.

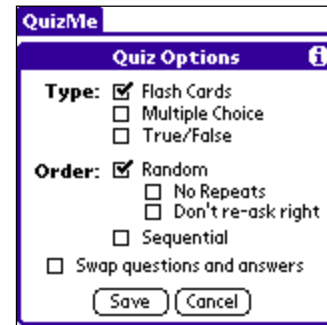
Basic Options

Choose the quiz type:

Flash Cards – it just shows each question and then answer.

Multiple Choice – it shows one question and gives you a choice between 4 possible answers.

True/False – it shows a question and an answer and you must decide if it is correct or not.



Choose the quiz order, **Random** or **Sequential**.

If you check the **Swap questions and answers** box, then the questions are displayed as answers, and the answers are displayed as questions.

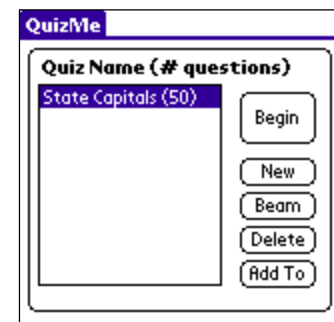
Advanced Random Options

No Repeats – when this is selected, every question is asked before repeating any of them. After all questions have been asked, it does it all over again.

Don't re-ask right – when this is selected, if you get a question correct, it is not asked again. You are only re-asked questions that you get wrong.

When you are happy with your options, tap **Save** to exit.

Start by selecting a quiz from the list, and tapping **Begin**.



Here's what each type of quiz looks like:

Flash Cards

The first screen is titled 'State Capitals (50)' and has a 'STOP' button in the top right. It displays 'Kansas' in a box with three dotted lines for an answer. Below it is another box with three dotted lines. At the bottom is a 'Show Answer' button.

The second screen is also titled 'State Capitals (50)' with a 'STOP' button. It displays 'Kansas' in a box with three dotted lines. Below it is a box with 'Topeka' and three dotted lines. At the bottom are 'Correct' and 'Wrong' buttons.

Multiple Choice

The screen is titled 'State Capitals (50)' with a 'STOP' button. It displays 'New Hampshire' in a box with three dotted lines. Below it is a box containing four options, each with a checkbox: 'Annapolis', 'Bismarck', 'Jackson', and 'Concord'.

True/False

The screen is titled 'State Capitals (50)' with a 'STOP' button. It displays 'Colorado' in a box with three dotted lines. Below it is a box with 'Little Rock' and three dotted lines. At the bottom are 'True' and 'False' buttons.

You may tap the **Stop** button in the upper right to end a quiz at any time. When you do, you will see a summary of your results.

The screen is titled 'State Capitals (50)' with a 'STOP' button. It displays 'Michigan' in a box with three dotted lines. Below it is a section titled 'Quiz Results' with an information icon and the text 'You got 90.0 % of the questions correct (9/10)'. At the bottom is a 'Done' button.

Revision History

Version 1.0 (6 november 2000)
Initial Release.

Disclaimer & Stuff

Despite our best efforts, bugs sometimes find their way into our software (and tell us if you find any!) and therefore we cannot take any responsibility for any loss of data or the like that may occur. This software is provided "as-is" without any warranties expressed or implied and by downloading the software the user agrees with this and uses the software at their own risk.