



## The Mobile Internet experience on your PDA

### Welcome to EzWAP

---

EzWAP places Mobile Internet information and services in the palm of your hand. Devices such as Pocket PCs and Handheld PCs which run the EzWAP micro-browser, offer easy and secure access to relevant Internet/Intranet information over wireless networks thanks to the integrated support for WML 1.2.1, cHTML and XHTML basic standards. Simply install EzWAP on your device, connect to your Internet Service Provider (ISP), and then you can browse Mobile Internet sites as easily as you currently browse HTML sites using a standard web browser.

This document describes how to quickly get started with EzWAP.

**Enjoy mobile surfing anywhere!**



**Belgium**  
Rue de l'Hôpital, 5  
B-1420 Braine-l'Alleud  
Phone: +32 2 387 20 00  
Fax: +32 2 387 20 10

**France**  
Boulevard de Valmy, 1  
F-59650 Villeneuve d'Ascq  
Phone : + 33 3 20 19 00 60  
Fax : + 33 3 20 19 00 69

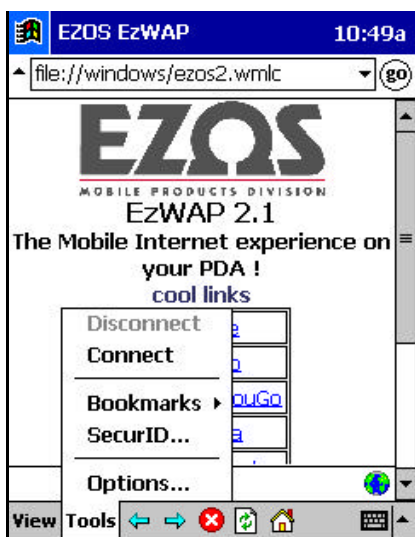
**E-mail:** [info@ezos.com](mailto:info@ezos.com)  
**Web site:** <http://www.ezos.com>

## Configuring EzWAP

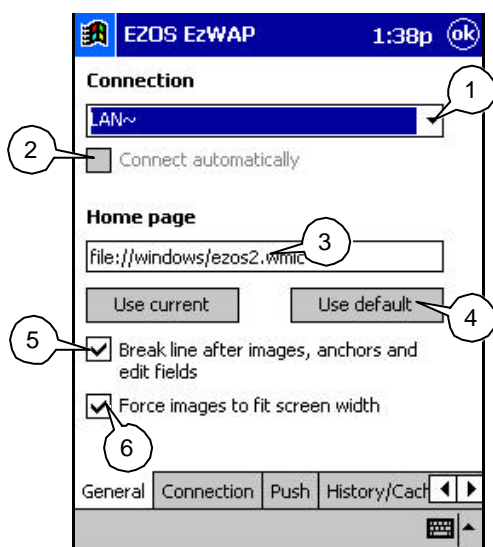
Before using EzWAP for the first time you have to configure your Pocket PC or Handheld PC connection settings to enable communication with your provider.

### To configure EzWAP

1. In the EzWAP **Tools** menu, select **Options....**



2. Select the **General** tab to edit the general settings.



- Use the **Connection** selection box (1) to select the dial-up connection to be used.
- Check the **Connect automatically** box (2) if you want EzWAP to automatically activate the selected connection when needed.



**Belgium**  
Rue de l'Hôpital, 5  
B-1420 Braine-l'Alleud  
Phone: +32 2 387 20 00  
Fax: +32 2 387 20 10

**France**  
Boulevard de Valmy, 1  
F-59650 Villeneuve d'Ascq  
Phone : + 33 3 20 19 00 60  
Fax : + 33 3 20 19 00 69

E-mail: [info@ezos.com](mailto:info@ezos.com)  
Web site: <http://www.ezos.com>

- To change the default WML document that will load automatically as home page, enter a valid URL in the **Home page** box (3).  
Or,  
Tap the **Use default** button (4) to select the default EzWAP page as standard home page.
  - Check the **Break line after images, anchors and edit fields** box (5) if you want a line feed to be automatically inserted after input fields, anchors and images.
  - Check the **Force images to fit screen width** box (6) if you want images to be automatically adjusted to the size of your screen.
3. Select the **Connection** tab to provide technical details about your WAP connection. Under **Connection type**, select one of the following options:

### Proxy

Select this option if your mobile phone network operator does not operate a WAP gateway today (please consult the operator for details) and you want to use your regular Internet Service Provider to access WML-based sites.

- Complete the **Address** box (1) with the IP Address of your service provider, for example: 63.254.8.6.
- Complete the **Port** box (2) with the port number of the proxy, for example: 80.  
If applicable, complete the **User authentication** box (3) with your personal account number and the **Password** box (4) with the corresponding secret code.

### Gateway

Select this option if your mobile phone network operates a WAP gateway and you want to benefit from the additional services provided by your operator. Please consult the operator for details.

**EZOS EzWAP** 1:39p **ok**

**Connection type**

☐ Proxy ☒ Gateway ☐ None

Address:  Port:

☒ Connectionless gateway

☐ WTLS secured connection

**Timeouts**

Connection timeout (ms)

Retries  x timeout

General Connection Push History/Cach

- Complete the **Address** box (1) with the IP Address for the WAP gateway. This is a sequence of digits comprised of four integers separated by decimal points, for example: 193.96.141.24. This information can be found in the notice included in your operator's welcome pack.
- Complete the **Port** box (2) with the port number used by the WAP gateway, for example: 9200.
- Select the **Connectionless gateway** check box (3) if the gateway works in connectionless mode.
- Select the **WTLS secured connection** check box (4) if the gateway uses the WTLS technology for enhanced security over the wireless network.

#### None

Select this option if you do not connect through a proxy or a gateway.

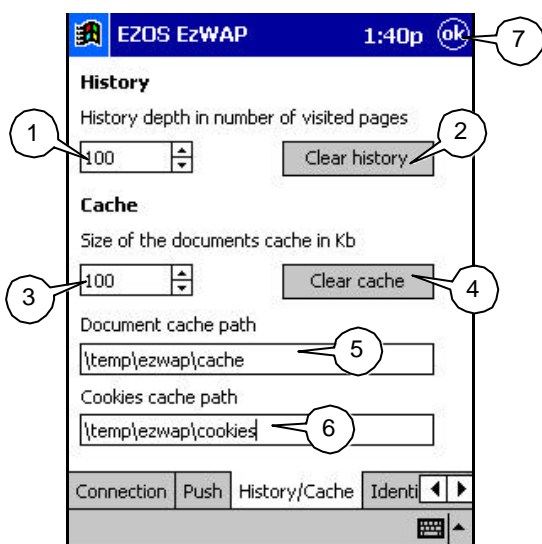
- Under **Timeouts**, specify the **Connection timeout** in milliseconds and the number and timeout of connection **Retries**.
- Select the **Push** tab to edit the push options.

- Select the **Enable push** check box (1) if you want to enable push services, whereby on-the-fly messages such as latest traffic reports, stock quote updates, etc. are automatically delivered to your device. If you do not want to use push services, go directly to step 6.
- Complete the **Address** box (2) with the IP Address for the push gateway. This is a sequence of digits comprised of four integers separated by decimal points, for example: 193.96.141.24. This information can be found in the notice included in the push operator's welcome pack.
- Complete the **Port** box with the port number used by the push gateway i.e., 2948 (connectionless push gateway), 2949 (connectionless push gateway with WTLS), 9120 (WTLS) or 9209 (no connectionless push gateway + no WTLS).
- Select the **Connectionless push gateway** check box (4) if the push gateway works in connectionless mode.
- Select the **WTLS secured connection** check box (5) if the push gateway uses the WTLS technology for enhanced security over the wireless network.

**Note:**

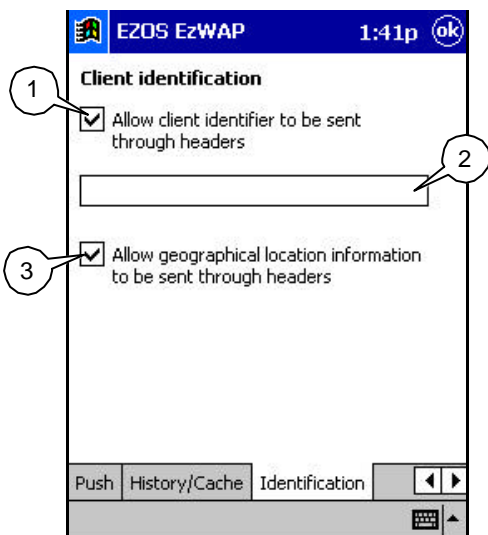
Incoming push messages are immediately signaled by a popup in your micro-browser. You have the choice to accept it (i.e., read it or go the suggested site) or keep it for later. In the second case, a special icon will be displayed on the Home page, near the Location globe icon.

6. Select the **History/Cache** tab to edit the history settings.



- Use the first spin box (1) to specify the number of navigation steps that must be available for the **Forward** and **Backward** options of your EzWAP microbrowser. If you want to reset the history content and start with an empty one, tap the **Clear history** button (2).
- Use the second spin box (3) to adjust the cache size (in kilobytes). (In the example above, EzWAP uses 100Kb to avoid systematically reloading data from the network). If you want to reset the cache content and start with an empty one, tap the **Clear cache** button (4).
- Complete the **Document cache path** box (5) with the full path of the cache on your mobile device.
- Complete the **Cookies cache path** box (6) with the full path for cookies on your mobile device.

7. Select the **Identification** tab to specify the identification/localisation options.



- Select the first check box (1) if you have a mobile subscriber ISDN (MSISDN) contract and you accept that your phone number be supplied to visited sites for customisation purposes.

Use the input text box (2) to enter your phone number, including: country code, national destination code and subscriber number.

For example: 32 0477 387 20 00 (32 for Belgium, 0477 for local operator, 3872000 for mobile).

- Select the second check box (3) if you accept that your geographical location details be supplied to visited sites for customised service offers. This may be useful for example if you often visit sites like weather forecasting sites that broadcast custom forecasts depending on where you are in the world.

8. Tap **OK** (7) to save the new settings.

9. If you have selected the check box to accept that your geographical location details be supplied to visited sites in step 7, tap the globe icon on the EzWAP home page then tap the **Add** button to supply the details of your current geographical location or specify new potential locations.

**EZOS EzWAP** 1:54p **ok**

**Edit geographical location**

Location name: Liege (1)

Geo.gsm: 45;987;9;21 (2)

Geo.position: 40;50;140 (3)

Geo.region: BE-WLG (4)

Geo.location: LIEGE (5)

Notes:  
 Geo.gsm format: "mcc;mnc;lac;ci"  
 Geo.position format: "lat;lon[;ele]"

**OK**

- Complete the **Location name** box (1) with a name of your choice to identify the location. For example : French offices.
- Complete the **Geo.gsm** box (2) with the full location details of your GSM. The format must be: MCC;MNC;LAC;CI. For example: 234;33;52;49929. This information is available in the system parameters of certain gsm models. For more details, please enquire with your mobile operator.

**MCC** - Mobile Country Code. For example: 206 for Belgium, 460 for China, 208 for France, 262 for Germany, 222 for Italy, 214 for Spain, 234 for UK, 250 for Russia, 310 for USA, etc.

**MNC** - Mobile Network Code. For example: 01 for Proximus (Belgium), 00 for Chntelgsm (China), 01 for Itineris (France), 01 for Deutsch Telekom (Germany), 10 for Omnitel (Italy), 07 for Telefonica (Spain), 10 for Cellnet (UK), 150 for BellSouth (USA), etc.

**LAC** - Local Area Code. A value between 0 and 65535.

**CI** - Cell ID. Number identifying the active cell. For example: 49929.

- Complete the **Geo.position** box (3) with the coordinates of your geographical position. The format must be: latitude;longitude;elevation (optional). For example, 48.54;-123.84;120 indicates a location 120 meters above datum (elevation) at position 48.51 degrees North (latitude), 123.84 degrees West (longitude).

- Complete the **Geo.region** box (4) with the standard ISO 3166-1 and ISO 3166-2 codes of your country and region.  
For example, ES-M for Madrid, GB-LND for London, FR-75 for Paris, CN-71 for Taiwan, CA-ON for Ontario.
- Complete the **Geo.location** box (5) with the exact name of the place.  
For example: Hôtel Georges V, Paris.

10. Tap **OK** to save the location details.



**Belgium**  
Rue de l'Hôpital, 5  
B-1420 Braine-l'Alleud  
Phone: +32 2 387 20 00  
Fax: +32 2 387 20 10

**France**  
Boulevard de Valmy, 1  
F-59650 Villeneuve d'Ascq  
Phone : + 33 3 20 19 00 60  
Fax : + 33 3 20 19 00 69

**Email:** [info@ezos.com](mailto:info@ezos.com)

**Web site:** <http://www.ezos.com>



## Surfing with EzWAP

### To surf with EzWAP

1. In the location box (1), enter the URL of the site that you want to access.

Or,

To access a local file, replace **http:** by **file:**

For example:

- file:c:\program files\ezos\ezwap\ezos.wmlc

- http://wap.ezos.com

Or,

Tap the location selection box to select a recently visited site.

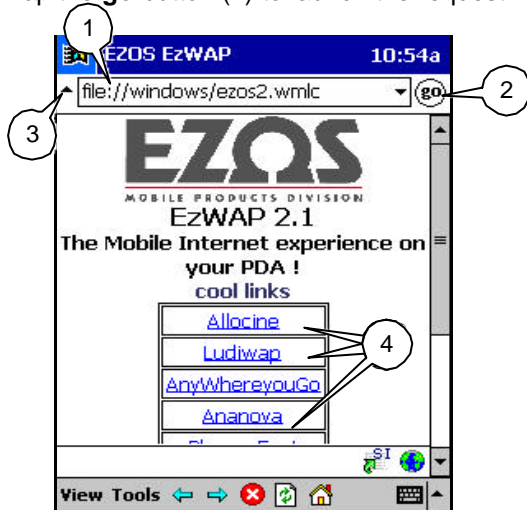
#### Note:

If you tap (3), the address in the upper box (1) will be replaced by the corresponding title information.

2. Press **Enter**.

Or,

Tap the **go** button (2) to launch the request.



3. When the document is loaded, select the appropriate hyperlinks (4) to browse through the available pages.

### To define bookmarks

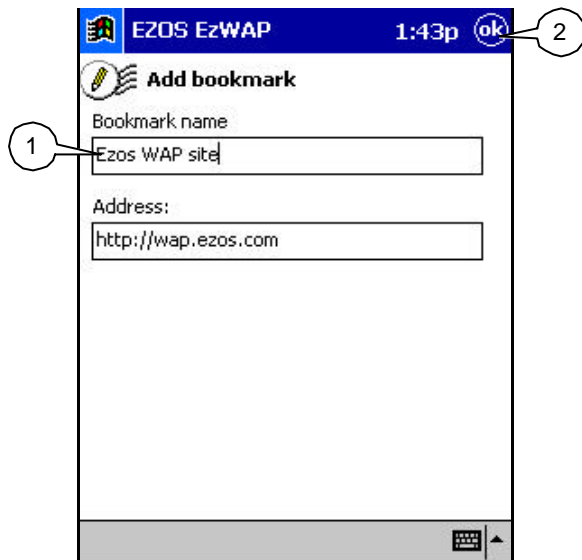
1. In the location box, enter the URL of the site for which you want to define a bookmark.
2. In the **Tools** menu, select **Bookmarks**.
3. In the **Bookmarks** menu, select **Add...** to open the bookmark definition dialog box.



**Belgium**  
Rue de l'Hôpital, 5  
B-1420 Braine-l'Alleud  
Phone: +32 2 387 20 00  
Fax: +32 2 387 20 10

**France**  
Boulevard de Valmy, 1  
F-59650 Villeneuve d'Ascq  
Phone : + 33 3 20 19 00 60  
Fax : + 33 3 20 19 00 69

E-mail: [info@ezos.com](mailto:info@ezos.com)  
Web site: <http://www.ezos.com>



4. Type a name for the site in the **Bookmark name** box (1).







5. Tap **OK** (2) to save the new bookmark.

(To access the site afterwards, choose the **Tools > Bookmarks > View...** menu sequence, then select the site in the bookmark list and tap **OK**.)

## Navigating Through EzWAP

---

### Navigation Buttons

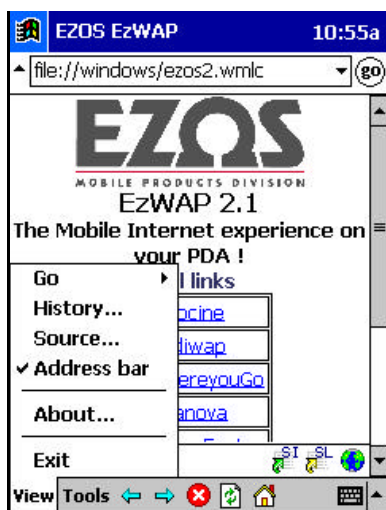
BUTTON	NAME	MEANING
	Stop	abort loading
	Reload	reload the current document from network rather than from cache
	Home	load the home page specified in the general options
	Back	go backward into the history
	Forward	go forward into the history
	Card	display the card contextual popup menu. This menu may be empty or contain site specific actions

#### Note:

The **Home**, **Backward**, **Forward**, **Stop** and **Reload** buttons are also available from the **View >Go** menu (see below).

### View Menu Options

The **View** menu contains options to view the source of a page and to refresh the view.



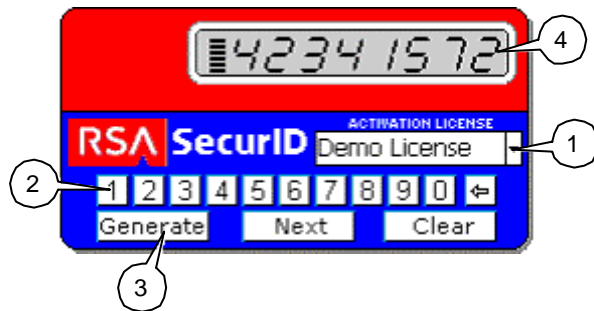
MENU OPTION	MEANING
<b>Go</b>	Display the currently selected page, load the home page specified in the Preferences ( <b>Home</b> ), the previously accessed page ( <b>Backward</b> ), the next page in the browse history ( <b>Forward</b> ), stop loading ( <b>Stop</b> ) or reload the current document from network rather than from cache ( <b>Reload</b> )
<b>History...</b>	Display the recent browse history
<b>Source...</b>	Display the WML, CHTML or XHTML source code of the current page
<b>Address bar</b>	Show or hide the address bar
<b>About...</b>	Display information about the current version of EzWAP
<b>Exit</b>	Close EzWAP

## Generating a SecurID

Access to a number of secure mobile e-business sites is subordinated to a control of authentication by means of a unique RSA SecurID. EzWAP allows you to generate one-time SecurIDs based on existing activation licences.

### To generate a SecurID

1. Tap the **Tools** menu and select **SecurID...**
2. In the Information dialog box, enter your current passphrase if you have already defined one, or enter a passphrase of your choice if you have not defined it yet.
3. Tap **OK**.
4. In the SecurID fob, select the activation licence (1) for which you need to generate the SecurID (if the licence is not in the list, tap **New** from the selection box to add the details of a new licence manually or to import it from a file), use the number keys (2) to enter the input code provided by the site, then tap **Generate** (3).



5. Copy the generated SecurID (4) to the target location on the secure site.

### Note:

SecurIDs are valid only for a very limited period of time (usually 1 minute) and suppose that the time on the mobile device is exactly the same as on the remote server. The lowering pile before the SecurID gives an indication of the remaining time to validate the SecurID on the site. If there is a certain time lag between the system time on your mobile device and the server time, meaning that the SecurID may have already expired by the time you type it in the site, tap **Next** to generate a further SecurID, and try with this one instead.

## Glossary

---

### Authentication

The verification (check) of the identity of a user. Authentication can be carried out user-oriented (user authentication) or computer-oriented (by the computer address).

### Cache

A small fast memory holding recently accessed information, designed to speed up subsequent access to the same data.

### Card

An organisation metaphor used to refer to a block of WML code. A card usually defines a single action or operation that will be available on a small screen. Depending on the application, a number of action cards can be bundled into a deck to offer a more complex resource.

### CHTML

Compact HTML. An alternative language to WML, that was developed by the Japanese company NTT DoCoMo for web browsing and exchanging email from mobile devices.

### Cookie

A piece of information, such as login or registration information, online "shopping cart" information, user preferences, etc., which is sent by a (WAP) server to a browser. This information may be saved locally on the device for quicker, customised access to visited pages.

### Deck

A sequence of WML cards available organised as a single unit for transmission to a WAP device. A deck is similar to an HTML page when thinking in terms of Web pages, in that it is identified by a Web address and is the basic unit of content transmission.

### i-Mode

A text-based mobile information service developed by the Japanese company NTT DoCoMo in February 1999. i-Mode uses CHTML (compact HTML) for web browsing and exchanging email from mobile devices, very much like WAP uses WML to browse decks and cards.

### IP address

The unique number that identifies a machine on the Internet. Usually, this address is represented by four numbers joined by periods, like 129.133.10.10. The first two or three pieces represent the network that the system is on, called its subnet. For example, all the computers for Wesleyan University in the U.S.A. are in the subnet 129.133, while the number in the previous paragraph represents a full address to one of the university's computers.

## **M-Services**

A text-based mobile information service developed a major American standards organization in December 2000. M-Services uses XHTML Basic, a stripped-down version of XML, for web browsing and exchanging email from mobile devices, very much like WAP uses WML to browse decks and cards.

## **MSISDN**

Mobile Subscriber Integrated Services Digital Network. A standard description of a mobile phone number (i.e., phone number without the International Direct Dial (IDD) access code for the country).

## **Proxy**

A server configured to act as a security barrier between an internal network and the Internet, keeping other people on the Internet from gaining access to confidential information on the internal network or on individual PCs connected to the network.

## **Push**

A new technology responsible for the proactive delivery of information from a gateway to a WAP device.

## **Skin**

A custom appearance that determines the general layout of a micro-browser.

## **WAP Gateway**

A dedicated two-way device that translates WAP contents and user requests using a common WAP protocol. Similar to a "door" through which data would transit between the Internet and the wireless network.

## **WML (Wireless Markup Language)**

The markup language used to create decks. WML fulfils the same purpose as HTML does on World Wide Web.

## **WTLS (Wireless Transport Layer Security)**

The protocol used to ensure security (data integrity, confidentiality, authentication and non-repudiation) between the wireless device and the WAP gateway/proxy.

## **XHTML**

An alternative language to WML, that was developed by a major American standards organization for web browsing and exchanging email from mobile devices.



**Belgium**  
Rue de l'Hôpital, 5  
B-1420 Braine-l'Alleud  
Phone: +32 2 387 20 00  
Fax: +32 2 387 20 10

**France**  
Boulevard de Valmy, 1  
F-59650 Villeneuve d'Ascq  
Phone : + 33 3 20 19 00 60  
Fax : + 33 3 20 19 00 69

**E-mail:** [info@ezos.com](mailto:info@ezos.com)  
**Web site:** <http://www.ezos.com>

## Cool WAP Site Collection

---

The following collection contains a selection of interesting WAP sites to begin your exploration.

URL	<a href="http://wap.wapbone.com/">http://wap.wapbone.com/</a>
Language	English
Description	The world's largest directory to WAP services, including site descriptions and user ratings

URL	<a href="http://wap.ananova.com/">http://wap.ananova.com/</a>
Language	English
Description	News, weather and entertainment

URL	<a href="http://wap.ayg.com/">http://wap.ayg.com/</a>
Language	English
Description	The latest news about recent developments in the wireless technology, WAP, I-Mode, J2ME, Bluetooth, etc.

URL	<a href="http://wap.wapgoal.com/">http://wap.wapgoal.com/</a>
Language	German
Description	All about football. News and reports about the UEFA Cup and the Champions' League

URL	<a href="http://wap.paf1.com/">http://wap.paf1.com/</a>
Language	English
Description	A facts site with useful tools including a conversion utility, geography facts and a dictionary/thesaurus

URL	<a href="http://wap.2pl.com/">http://wap.2pl.com/</a>
Language	Language selection
Description	Travel guide (hotel, tourism companies, tourist offices, etc.)

URL	<a href="http://www.palmreach.com/index.wml">http://www.palmreach.com/index.wml</a>
Language	English
Description	Chat room (registration needed)

URL	<a href="http://wap.ludiwap.fr/">http://wap.ludiwap.fr/</a>
Language	French
Description	Interactive online games and entertainment

URL	<a href="http://wap.djuice.com/">http://wap.djuice.com/</a>
Language	English
Description	Portal site (Good site !)



URL	<a href="http://wapaw.com/index.phtml?format=wml">http://wapaw.com/index.phtml?format=wml</a>
Language	English
Description	Search engine (Good site!!!)

URL	<a href="http://www.waptastic.com/application/wml.asp">http://www.waptastic.com/application/wml.asp</a>
Language	English
Description	Very complete portal site (FAQ, Articles, WML guide, etc.)

URL	<a href="http://wap.the451.com">http://wap.the451.com</a>
Language	English
Description	News site

URL	<a href="http://wapmap.com/">http://wapmap.com/</a>
Language	English
Description	Search engine (Very good site!)

URL	<a href="http://mobile.worldof.net">http://mobile.worldof.net</a>
Language	English
Description	Flight information

URL	<a href="http://showmewap.com">http://showmewap.com</a>
Language	English/French
Description	Search engine

## Bug Report

---

Please fill the following form and send it to [software@ezos.com](mailto:software@ezos.com).

Thank you for your help!

*The EzWAP Development Team.*

---

EzWAP version / build : .....

OS/Platform : .....

Problem area : ☐ Com  
☐ Navigation  
☐ User Interface  
☐ Other... Please specify : .....

Problem type : ☐ Crash  
☐ Unable to access a WAP site  
☐ Bad data display  
☐ Other... Please specify : .....

Is the problem reproducible? ☐ Yes  
☐ No  
☐ Don't know

Please provide a detailed description of the specific problem you experienced.  
Tell us what you expected to happen and what actually happened.

.....

.....

.....

.....

.....

.....

.....

.....

Other remarks or suggestions:

.....

.....

.....

.....



**Belgium**  
Rue de l'Hôpital, 5  
B-1420 Braine-l'Alleud  
Phone: +32 2 387 20 00  
Fax: +32 2 387 20 10

**France**  
Boulevard de Valmy, 1  
F-59650 Villeneuve d'Ascq  
Phone : + 33 3 20 19 00 60  
Fax : + 33 3 20 19 00 69

E-mail: [info@ezos.com](mailto:info@ezos.com)  
Web site: <http://www.ezos.com>