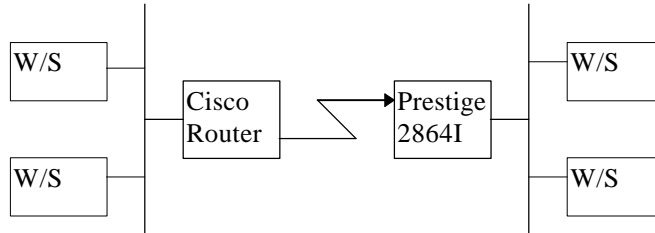


Last modified: 06-28-96

## Setting up your Prestige to Talk to a Cisco Router

### I. Cisco Router dialing to Prestige 2864I



- A. Setup Prestige/Cisco for PAP - If Cisco requests PAP in LCP configure-request in an incoming call to us, we must not provide a user/password that can be used to log in to our system.
  1. In menu 13, set the **Mutual Authen** field to 'Yes'.
  2. Set the **PAP Login** to the username for this authentication. This username must be different from any other username (remote node or remote user) defined in the Prestige.
  3. In the **PAP Password** field, enter the password for that user.
- B. Setup Prestige/Cisco for CHAP - If Cisco requests CHAP in the LCP configure-request in an incoming call to the Prestige, you need to define a "dialer map" command for the Cisco calling device. For instance,

```
hostname cisco2503
username 306t password abc
dialer map ip 204.247.203.151 name 306t 7770408
```

This command maps an IP address to a telephone number to dial. The optional 'name' restricts the connection to be a particular host name.

For the Prestige, you need to make the following configurations:

1. In menu 11, set the **Rem Login** field to the hostname of the Cisco device.
2. Also in menu 11, set the **My Login** field to the same name used for the **System Name** field in menu 1.
3. In menu 11, make sure that the **Rem Password** and **My Password** fields have the same password that the Cisco device is expecting.

### II. Prestige 2864I dialing to Cisco Router

- A. Setup Prestige/Cisco for CHAP - If the Prestige is the calling device, then no special configuration parameters need to be modified as this is the same scenario as calling any other remote node.