

## BoomFTP32 Help Index

[What is BoomFTP32?](#)

[Licence/Copyright](#)

### Menu:

The BoomFTP32 application contains the following menu bar, which provides you assistance with this application:



<a href="#">Connect menu</a>	Contains commands providing all operations with connect/disconnect to the remote computer
<a href="#">View menu</a>	Contains commands providing imaging of separate parts of program and setting of basic options
<a href="#">Local menu</a>	Contains commands providing basic operations with local pane
<a href="#">Remote menu</a>	Contains commands providing basic operations with remote pane
<a href="#">Help menu</a>	Contains commands providing helps over the different aspect of application

### What is BoomFTP32?

BoomFTP32 is a Windows-based application for transferring files in between your PC (the "Local System") and an [FTP site](#) (the "Remote Site"). Using BoomFTP32, you can connect to another system from your PC, browse files and folders on both systems, and transfer files between the systems.

BoomFTP32 is a simple File Transfer Protocol (FTP) client application that complies with the Windows sockets (Winsock) standard. BoomFTP32, designed by Boomerang Software, Inc for Windows (TM) 95/98/NT/2000, is similar to well-known external FTP clients. BoomFTP32 can connect to any system that has a valid Internet Address and contains an FTP server program, allowing you to transfer files between a wide variety of systems, including Windows, OS\2, and UNIX systems.

With this client you can access some FTP servers over the Internet or a company Intranet. You may operate with FTP client exactly the same as the file functions of Windows Explorer, i.e. with the functions to copy, rename, delete, make directory, etc.

Hint: BoomFTP32 supports only the most important server types, like Unix, Windows NT, VMS and PC/TCP. If there is no directory listing shown after connecting, the server type is probably not supported. In this case you should use other FTP client, e.g. WS\_FTP or CuteFTP.

You can use BoomFTP32 to:

- Create a connection between your local system and an FTP site
- Create and retain sites to automate the logon and connection to frequently used FTP sites
- Display and browse files and folders on both the local system and the FTP site
- Transfer one or more files between the local system and an FTP site (in either direction)
- Access the vast store of information on [anonymous FTP sites](#)
- Resume interrupted file transfers.
- Drag-and-drop between a local system and an FTP site.
- Prevent overwrite of newer files.

and more others.

**Licence/Copyright**

This software is being provided to you under the terms and conditions mentioned herein and those of the License Agreement contained in this package or its documentation. By continuing this installation or by using this software you accept all the terms and conditions thereof.

Some parts of this program are patented and are protected by the applicable patent laws.

The ownership of this program is retained by Boomerang Software, Inc. This program is licensed to you for use under the terms mentioned herein and those of the license agreement contained in the documentation of the program.

Boomerang Software, Inc. makes no warranty of representation, either expressed or implied, with respect to this software or documentation, its quality, performance, merchantability, or fitness for a particular purpose. As a result, this software and its documentation are licensed "AS IS" and you, the licensee is assuming the entire risk as to its quality and performance.

BOOMERANG SOFTWARE MAKES NO WARRANTIES OF ANY KIND, AND IS NOT RESPONSIBLE FOR ANY CONSEQUENTIAL DAMAGES OR FAULTS THAT MAY ARISE FROM YOUR USE OF SUCH PROGRAM. IN NO EVENT WILL BOOMERANG SOFTWARE, INC. BE LIABLE FOR DIRECT, INDIRECT, SPECIAL, INCIDENTAL OR CONCEQUENTIAL DAMAGES ARISING OUT OF THE USE OR INABILITY TO USE THE SOFTWARE OR DOCUMENTATION, EVEN IF ADVISED OF THE POSSIBILITY OF SUCH DAMAGES.

BY CONTINUING THIS INSTALLATION OR BY USING THIS PROGRAM, YOU AGREE NOT TO REVERSE ENGINEER, DE-COMPILE OR DISASSEMBLE THE SOFTWARE, OR CREATE OTHER DERIVATIVE WORK.

**Anonymous FTP**

Most FTP sites support anonymous logins where you might have not an account on the FTP site in order to transfer files. For most anonymous logins, the User ID is the word "anonymous" and the password is your e-mail address.

**FTP site**

An FTP site consists of an FTP server program located on an Internet host computer.

## Connect menu items

The Connect menu contains the following commands, which provide you assistance with this application:

<i>Item</i>	<i>Shortcut</i>	<i>Description</i>
<b>New Window</b>	Ctrl+N	Opens new window of BoomFtp32 program.
<b>Connect...</b>	Ctrl+C	Displays <b>Connection</b> library Dialog Box and enables user to manage connections and activate connection from library.
<b>Quick Connect</b>	Ctrl+Q	Displays <b>Quick connect</b> Dialog Box and enables user to quickly connect to FTP server without using connection's library.
<b>Disconnect</b>	Ctrl+D	Disconnects the currently connection with the FTP server.
<b>Transfer Mode &gt;</b>		
<b>Binary</b>		Sets transfer mode to Binary. In this mode all files are transferred in BIN Mode
<b>ASCII</b>		Sets transfer mode to ASCII. In this mode all files are transferred in ASCII Mode
<b>Auto</b>		Sets transfer mode to Auto. In this mode program determines transfer mode of every file by looking on ASCII extension list, specified in Options Dialog Box.
<b>Exit</b>		Quits BoomFTP32.

## View menu items

The View menu contains the following commands, which provide you assistance with this application:

<i>Item</i>	<i>Shortcut</i>	<i>Description</i>
<b>Toolbar</b>		Shows or hides general toolbar
<b>Status Bar</b>		Shows or hides the status bar
<b>Log Pane</b>		Shows or hides the Log Pane
<b>Options...</b>	Ctrl+O	Displays <b>Options</b> Dialog Box
<b>Local Pane &gt;</b>		
<b>Large Icons</b>		Displays file list of local pane as large icons
<b>Small Icons</b>		Displays file list of local pane as small icons
<b>List</b>		Displays file list of local list as list
<b>Details</b>		Displays file list of local pane with details
<b>Arrange Icons &gt;</b>		
<b>By Name</b>		Arranges files in local pane by name
<b>By Type</b>		Arranges files in local pane by type
<b>By Size</b>		Arranges files in local pane by size
<b>By Date</b>		Arranges files in local pane by modification date
<b>Remote Pane &gt;</b>		
<b>Large Icons</b>		Displays file list of remote pane as large icons
<b>Small Icons</b>		Displays file list of local pane as small icons
<b>List</b>		Displays file list of local list as list
<b>Details</b>		Displays file list of local pane with details
<b>Arrange Icons &gt;</b>		
<b>By Name</b>		Arranges files in local pane by name
<b>By Type</b>		Arranges files in local pane by type
<b>By Size</b>		Arranges files in local pane by size
<b>By Date</b>		Arranges files in local pane by modification date

## Local menu items

The Local menu contains the following commands, which provide you assistance with local pane of application:

<i>Item</i>	<i>Shortcut</i>	<i>Description</i>
<b>Open</b>	Enter	Opens currently selected file or directory
<b>Transfer</b>	Ctrl+PgUp	Uploads currently selected files or directories
<b>Go up folder</b>	Backspace	Goes one level up to the parent folder
<b>Refresh</b>	F5	Refreshes content of current directory

<b>Create Directory</b>		Creates new directory
<b>Change Directory</b>		Changes current directory
<b>Rename</b>	F2	Renames currently selected file or directory
<b>Delete</b>	Del	Deletes currently selected files or directories
<b>Remote menu items</b>		

The Remote menu contains the following commands, which provide you assistance with remote pane of application:

<i><b>Item</b></i>	<i><b>Shortcut</b></i>	<i><b>Description</b></i>
<b>Open</b>	Enter	Opens currently selected file or directory
<b>Transfer</b>	Ctrl+PgDn	Uploads currently selected files or directories
<b>Go up folder</b>	Backspace	Goes one level up to the parent folder
<b>Refresh</b>	F5	Refreshes content of current directory
<b>Create Directory</b>		Creates new directory
<b>Change Directory</b>		Changes current directory
<b>Rename</b>	F2	Renames currently selected file or directory
<b>Delete</b>	Del	Deletes currently selected files or directories
<b>Help menu commands</b>		

The Help menu contains the following commands, which provide you assistance with this application:

#### **Help Topics**

Displays content of the online help

#### **About BoomFTP32**

Displays copyright and other information about BoomFTP32

## Options Dialog Box

This is the main configuration dialog for BoomFTP32. Most settings can be changed in any tab of this dialog.

### General Tab

### Confirmation Tab

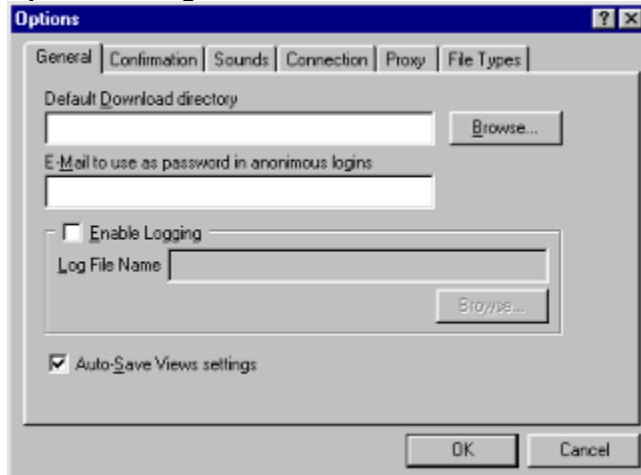
### Sounds Tab

### Connection Tab

### Proxy Tab

### File Types Tab

#### Options Dialog Box: General Tab



#### Default Download Directory

Initial Local Directory unless Initial Local Directory specified in connection properties.

#### E-mail to use as password in anonymous logins

E-mail used as password in anonymous logins unless it is specified in connection properties.

#### Enable Logging

Enables logging of protocol into the file.

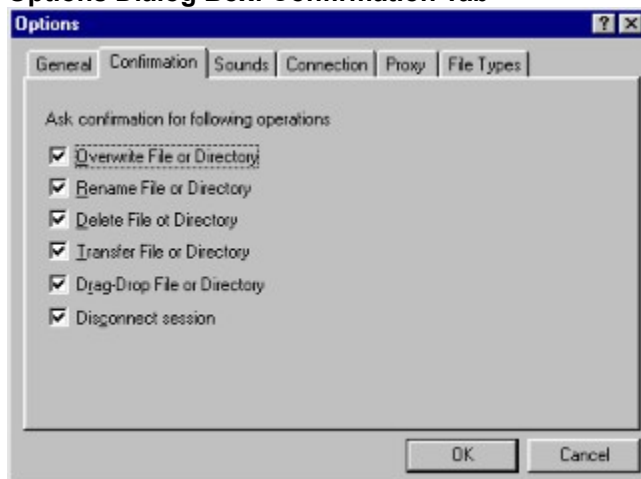
#### Log File Name

Specifies log file name to record, as a text file, the FTP commands, server responses, and transfers

#### Auto-Save View Settings

Putting check mark in this check box makes BoomFTP32 to save all options to be saved on exit and restored next time you start the program.

#### Options Dialog Box: Confirmation Tab



#### Overwrite File or Directory

Asks before overwriting file or directory.



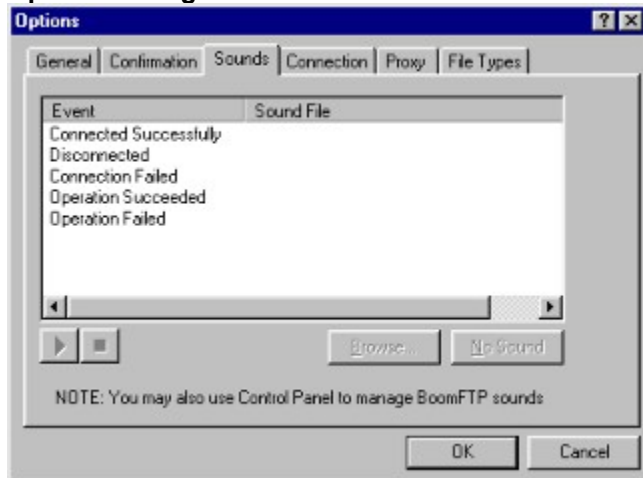
**Rename File or Directory**  
**Delete File or Directory**  
**Transfer File or Directory**  
**Drag-Drop File or Directory**

Asks before renaming file or directory.  
Asks before deleting file or directory.  
Asks before uploading/downloading file or directory.  
Asks before uploading/downloading file or directory via drag-drop.

**Disconnect Session**

Asks before disconnecting current session.

#### Options Dialog Box: Sounds Tab



**Event** Describes a list of sound Events

**Sound File** Specified WAV files when corresponding event occurs.

**Play Sound** Playback at the selected event.

**Stop Sound** Stops playing.

**Browse** Browses for sound file.

**No Sound** Make selected event no sounds

#### Options Dialog Box: Connection Tab

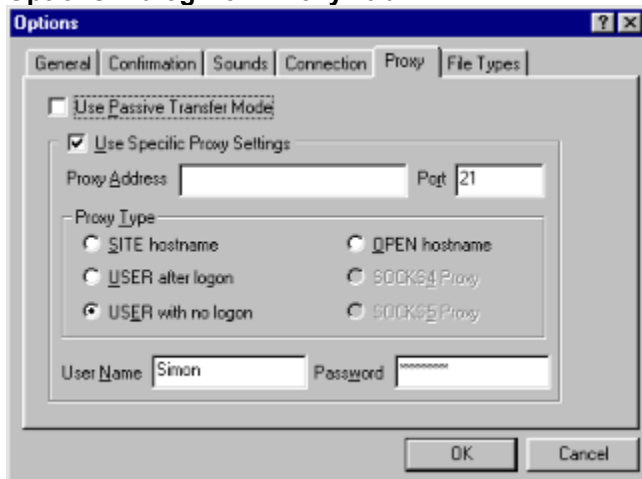


**Connect to the Internet using Local Area Network** Sets LAN Connection Mode

**Connect to the Internet using Modem** Sets Dial-Up Connection Mode

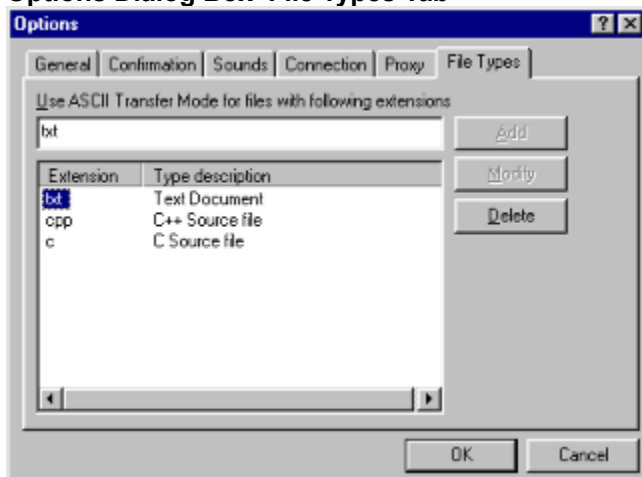
**Use the following Dial-Up networking connection** Specifies connection to use.

<b>Add</b>	Adds new connection.
<b>Properties</b>	Shows properties of selected connection.
<b>Number of times to attempt connection</b>	Number of retries during dialing.
<b>Number of seconds to wait between attempts</b>	Delay between attempts.
<b>Automatically Hang up after disconnect</b>	Hangs up after closing session
<b>Options Dialog Box: Proxy Tab</b>	



<b>Use Passive Transfer Mode</b>	Use PASV instead of PORT for data connection initializing.
<b>Use Specific Proxy Settings</b>	Use Proxy to connect to FTP Server
<b>Proxy Type</b>	Specifies used proxy type.
<b>Proxy Address</b>	IP Address of proxy.
<b>Port</b>	Port of proxy.
<b>User Name</b>	User name used for authentication on proxy.
<b>Password</b>	Password used for authentication on proxy.

#### Options Dialog Box File Types Tab



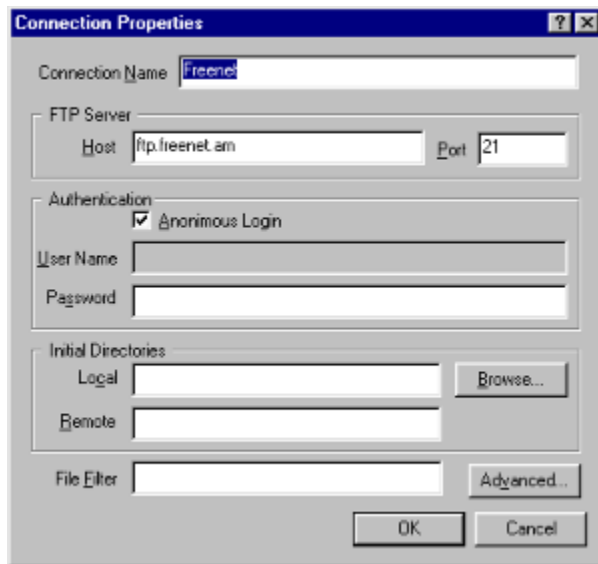
This options' tab lets you choose the ASCII method to transfer the files with specific extensions while AUTO transfer mode is set.

<b>Use ASCII Transfer Mode for files with the following extensions</b>	Default extensions list used to determine ASCII transfer mode in Auto Mode.
--	---

**Add**  
**Modify**  
**Delete**

Add an extension to the ASCII extension list.  
Modifies extension in the ASCII extension list.  
Delete extension from the ASCII extension list.

**Connection Properties**



**Connection Name**

Connection User friendly name.

**Host**

Address of FTP Server to connect to.

**Port**

Port of FTP Server to connect to.

**Anonymous Login**

Specifies anonymous login to use.

**User Name**

User Name used to Login.

**Password**

Password used to Login.

**Initial Directory**

Directories to show immediately after successful connect

**(Local and Remote)**

**File Filter**

Wildcards to use as file filter.

**Advanced...**

**Keep connection alive** Enables Anti-Idle support.

**Send NOOP Every NN minutes** Send Anti-Idle command every NN(specified) minutes.

**Time-out** Timeout to wait for data.

**Auto-retry count** Number of retries during connecting process.

### **Size command (System menu)**

Use this command to display a four-headed arrow so you can size the active window with the arrow keys.



After the pointer changes to the four-headed arrow:

1. Press one of the DIRECTION keys (left, right, up, or down arrow key) to move the pointer to the border you want to move.
2. Press a DIRECTION key to move the border.
3. Press ENTER when the window is the size you want.

Note: This command is unavailable if you maximize the window.

### **Shortcut**

Mouse: Drag the size bars at the corners or edges of the window.

### **Move command (Control menu)**

Use this command to display a four-headed arrow so you can move the active window or dialog box with the arrow keys.



Note: This command is unavailable if you maximize the window.

### **Shortcut**

Keys:      CTRL+F7

### **Close command (Control menus)**

Use this command to close the active window or dialog box.

Double-clicking a Control-menu box is the same as choosing the Close command.



**Note:** If you have multiple windows open for a single document, the Close command on the document Control menu closes only one window at a time. You can close all windows at once with the Close command on the File menu.

### **Shortcuts**

Keys:	CTRL+F4 closes a document window
	ALT+F4 closes the BoomFTP32 window or dialog box

**Restore command (Control menu)**

Use this command to return the active window to its size and position before you chose the Maximize or Minimize command.

**Connect**

Use this command to connect to remote computer's file or folder and save information of connection in the list.

**Shortcuts**          CTRL+C



**Quick Connect**

Use this command to quick connect to remote system. This mode of connections does not save your connection parameters.

**Shortcuts**      CTRL+Q

**View Log Pane**

Log Pane logs is a message area that logs all queries from the BoomFTP32 client (your PC) and all responses from the FTP site.

**Connect/Disconnect**

Use these buttons to connect/disconnect to/from host server.

**Shortcuts**      CTRL+D

### Exit command (File menu)



Use this command to end your BoomFTP32 session. You can also use the Close command in the application Control menu. BoomFTP32 prompts you to save documents with unsaved changes.

### Shortcuts

Mouse: Double-click the application's Control menu button.

Keys: ALT+F4

**View local pane's files as Large Icons**

Displays file list of local pane as large icons.

**View local pane's files as Small Icons**

Displays file list of local pane as small icons.

**View local pane's files as List**

Displays file list of local pane as list.

**Toolbar command (View menu)**

Use this command to display and hide the Toolbar, which includes the buttons for some of the most common commands in BoomFTP32, such as File Open. A check mark appears next to the menu item when the Toolbar is displayed.

See [Toolbar](#) for help when using the toolbar.



## **Toolbars**

BoomFTP32 program has main toolbar, toolbar for managing left (local) pane and toolbar for managing right (remote) pane

**Status Bar command (View menu)**

Use this command to display and hide the Status Bar, which describes the action to be executed by the selected menu item or depressed toolbar button, and keyboard latch state. A check mark appears next to the menu item when the Status Bar is displayed.

See Status Bar for help on using the status bar.

## Status Bar



The status bar is displayed at the bottom of the BoomFTP32 window. To display or hide the status bar, use the Status Bar command in the View menu.

The left area of the status bar describes actions of menu items as you use the arrow keys to navigate through menus. This area similarly shows messages that describe the actions of toolbar buttons as you depress them, before releasing them. If after viewing the description of the toolbar button command you wish not to execute the command, then release the mouse button until the pointer is off the toolbar button.

The right areas of the status bar indicate which of the following keys are latched down:

Indicator	Description
-----------	-------------

CAP	The Caps Lock key is latched down.
-----	------------------------------------

NUM	The Num Lock key is latched down.
-----	-----------------------------------

SCRL	The Scroll Lock key is latched down.
------	--------------------------------------

**Scrollbar**

A vertical or horizontal bar at the side or bottom of a window that can be used with a mouse to shift the contents of a window's client area either horizontally or vertically

**View local pane's files with Details**

Displays file list of local pane with details.

**Local pane's files sort by Name**

Arranges files in local pane by name.

**Local pane's files sort by Type**

Arranges files in local pane by type.

**Local pane's files sort by Size**

Arranges files in local pane by size.



**Local pane's files sort by Date**

Arranges files in local pane by modification date.

**View remote pane's files as Large Icons**

Displays file list of remote pane as large icons.

**View remote pane's files as Small Icons**

Displays file list of remote pane as small icons.

**New Window**

Opens a new window of BoomFTP32 program

**Shortcuts**

CTRL+N

**View remote pane's files as List**

Displays file list of remote pane as list.

**Index command (Help menu)**

Use this command to display the opening screen of Help. From the opening screen, you can jump to step-by-step instructions for using BoomFTP32 and various types of reference information.

Once you open Help, you can click the Contents button whenever you want to return to the opening screen.

**Using Help command (Help menu)**

Use this command for instructions about using Help.

**About command (Help menu)**

Use this command to display the copyright notice and version number of your copy of BoomFTP32.



## Context Help command



Use the Context Help command to obtain help on some portion of BoomFTP32. When you choose the Toolbar's Context Help button, the mouse pointer will change to an arrow and question mark. Then click somewhere in the BoomFTP32 window, such as another Toolbar button. The Help topic will be shown for the item you clicked.

## Shortcut

Keys:               SHIFT+F1

**View remote pane's files with Details**

Displays file list of remote pane with details.

### **Remote pane's files sort by Name**

Arranges files in remote pane by name

**Remote pane's files sort by Type**

Arranges files in remote pane by type.


**Remote pane's files sort by Size**

Arranges files in remote pane by size.

### **Minimize command (application Control menu)**

Use this command to reduce the BoomFTP32 window to an icon.


#### **Shortcut**

Mouse: Click the minimize icon  on the title bar.  
Keys: ALT+F9

**Maximize command (System menu)**

Use this command to enlarge the active window to fill the available space.

**Shortcut**

Mouse: Click the maximize icon  on the title bar; or double-click the title bar.

Keys: CTRL+F10 enlarges a document window.

### **Remote pane's files sort by Date**

Arranges files in remote pane by modification date

.



**Next Window command (document Control menu)**

Use this command to switch to the next open document window. BoomFTP32 determines which window is next according to the order in which you opened the windows.

**Shortcut**

Keys:           CTRL+F6

**Previous Window command (document Control menu)**

Use this command to switch to the previous open document window. BoomFTP32 determines which window is previous according to the order in which you opened the windows.

**Shortcut**

Keys:           SHIFT+CTRL+F6

**Local pane's open button**

Opens currently selected file or directory

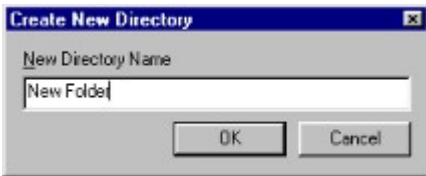
.

**Local pane's transfer button**

Uploads currently selected files or directories.

### Local pane's create directory button

Creates new directory in the local pane area



**Local pane's delete button**

Deletes currently selected files or directories

**Refresh local pane content**

Refreshes content of the current directory.

**Change current directory on local pane**

Changes current directory. The change directory command is useful for changing to a directory on your local drive. BoomFTP32 will display the appropriate box, where you can choose a directory to change.



**Local pane rename button**

Renames currently selected file or directory.

**Remote pane's open button**

Opens currently selected file or directory.

**Remote pane's transfer button**

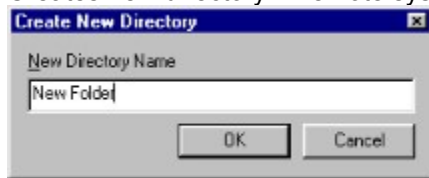
Uploads currently selected files or directories.

**Refresh remote pane content**

Refreshes content of the current directory.

### Remote pane's create new directory button

Creates new directory in remote system.



**Change current directory on remote pane**

Changes current directory. The change directory command is useful for changing to a directory on remote drive. BoomFTP32 will display the appropriate box, where you can choose folder to change to.

**Remote pane rename button**

Renames currently selected file or directory on remote system

**Remote pane delete button**

Delete currently selected files or directories from remote hosting server.



**Set BIN transfer mode**

Sets transfer mode to **Binary**. In this mode all files are transferred in BIN Mode.

**Set ASCII transfer mode**

Sets transfer mode to **ASCII**. In this mode all files are transferred in ASCII Mode.

### **Set AUTO transfer mode**

Sets transfer mode to **Auto**. In this mode program determines transfer mode of every file by looking on ASCII extension list, specified in **Options** Dialog Box.

**Local pane chup button**

Goes one level up to the parent directory on local system.

**No Help Available**

No help is available for this message box.

<< If you wish to author help specific to each message box prompt, then remove the AFX\_HIDP\_xxx values from the [ALIAS] section of your .HPJ file, and author a topic for each AFX\_HIDP\_xxx value. For example, AFX\_HIDP\_INVALID\_FILENAME is the help topic for the Invalid Filename message box. >>

**New command (File menu)**

Use this command to create another window of BoomFTP32.

**Shortcuts**

Toolbar:



Keys: CTRL+N

**Remote pane chup button**

Goes one level up to the parent directory on remote Hosting server.

**Reliable Upload transfer files**

BoomFTP32 resumes upload to FTP server from point where interrupted.

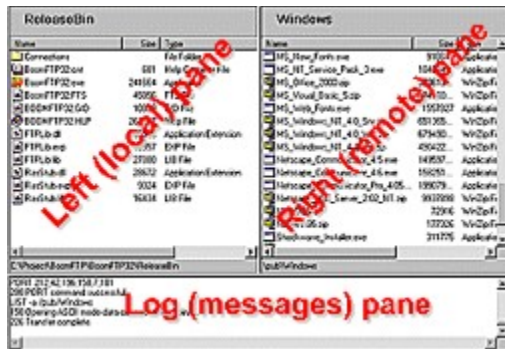


**Reliable download transfer files**

BoomFTP32 resumes downloading from FTP servers from point where interrupted.

## Main Frame

Main frame of BoomFTP32 consists from left (local) pane, right (remote) pane and log pane.



## Main frame toolbar



The toolbar is displayed at the top of application window, right below the menu bar. The toolbar provides quick mouse access to many tools used in BoomFTP32,

To hide or display the Toolbar, choose Toolbar from the View menu (ALT, V, T).



Open another window of BoomFTP32.



Quick connect to remote system. BoomFTP32 displays the QuickConnect dialog box, in which you can locate and open the desired remote system.



Connect to remote system. BoomFTP32 displays the Connect dialog box, in which you can manage, locate and open the desired remote hosting server.



Disconnect from remote hosting server.



BoomFTP32 displays the Options dialog box in which you can set basic configurations of program.



Sets transfer mode to Binary. In this mode all files are transferred in BIN Mode.



Sets transfer mode to ASCII. In this mode all files are transferred in ASCII Mode.



Sets transfer mode to Auto. In this mode program determines transfer mode by looking on ASCII extension list, specified in Options Dialog Box. Upload currently selected files or directories to remote hosting server.



Reliable upload currently selected files or directories to remote hosting server



Download currently selected files or directories from remote hosting server.



Reliable download currently selected files or directories from remote hosting server

**BOOMFTTYPE**

**Log pane**

Log Pane is a message area that logs all queries from the BoomFTP32 client (your PC) and all responses from the FTP site.

**Local pane**

Local pane is a area that shows current folders and its files tree on local system.

**Remote pane**

Remote pane is a area that shows current folders and its files tree on remote host computer.

## Local pane's toolbar

This toolbar provide managing file system showing on local pane.



Goes one level up to the parent directory.

Refreshes content of the current directory

Creates new directory in the local pane area

Changes current directory on your local drive

Renames currently selected file or directory

Delete currently selected files or directories

Displays file list of local pane as large icons

Displays file list of local pane as small icons

Displays file list of local pane as simple list

Displays file list of local pane with details



**LOCALPANEACCEL**

## Remote pane's toolbar

This toolbar provide managing file system showing on remote pane.



Goes one level up to the parent directory.

Refreshes content of the current directory

Creates new directory in the local pane area

Changes current directory on your local drive

Renames currently selected file or directory

Deletes currently selected files or directories

Displays file list of local pane as large icons

Displays file list of local pane as small icons

Displays file list of local pane as simple list

Displays file list of local pane with details

REMOTEPANEACCEL

## About Box

The About box will indicate the version number and also display the licensed-to information



### Connection basic properties

Insert any site name as Connection Name and fill out all basic information for connection.

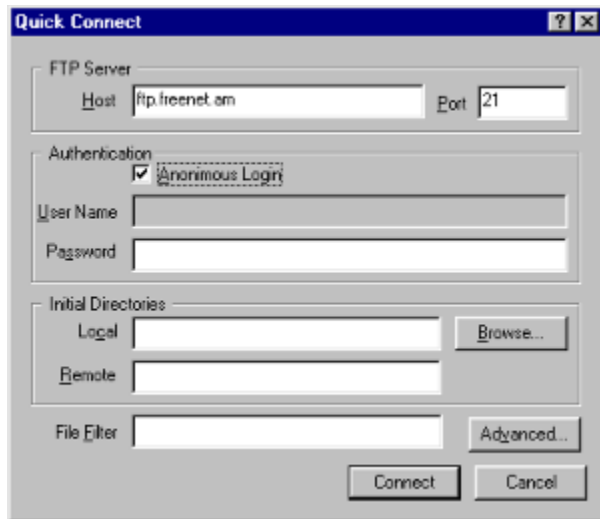
After pushing OK button your information will be stored in Connection list.

The image shows a 'Connection Properties' dialog box with the following fields and options:

- Connection Name:** A text field containing 'freenet'.
- FTP Server:**
  - Host:** A text field containing 'ftp.freenet.am'.
  - Port:** A text field containing '21'.
- Authentication:**
  - ☒ Anonymous Login
  - User Name:** An empty text field.
  - Password:** An empty text field.
- Initial Directories:**
  - Local:** An empty text field with a 'Browse...' button to its right.
  - Remote:** An empty text field.
- File Filter:** An empty text field with an 'Advanced...' button to its right.
- Buttons:** 'OK' and 'Cancel' buttons at the bottom right.

**Quick Connect dialog**

Set all basic parameters to connect via “Quick Connect” dialog box and push “Connect” button.

A screenshot of a 'Quick Connect' dialog box. The title bar is blue with the text 'Quick Connect' and standard window controls. The dialog is divided into several sections. The 'FTP Server' section has a 'Host' field containing 'ftp.freenet.am' and a 'Port' field containing '21'. The 'Authentication' section has a checked checkbox for 'Anonymous Login', and empty 'User Name' and 'Password' fields. The 'Initial Directories' section has 'Local' and 'Remote' fields, each with a 'Browse...' button to its right. Below this is a 'File Filter' field and an 'Advanced...' button. At the bottom are 'Connect' and 'Cancel' buttons.

Quick Connect

FTP Server

Host  Port

Authentication

☒ Anonymous Login

User Name

Password

Initial Directories

Local  Browse...

Remote

File Filter  Advanced...

Connect Cancel

### Connection advanced properties

- Set the **Send 'NOOP' Every** to send no-operation warning message every time period specified.
  - Set **Time-out** parameter to have connection be interrupted while idling over time period specified.
  - Set **Auto-Retry Count** to retry after specified number of attempts.
- Checking **Keep Connection Alive** allows keeping connection turned on when client is in idle.



**Advanced Properties**

☒ Keep Connection Alive  
(Send "NOOP" Every) 10 Min

Time-out 10 Min

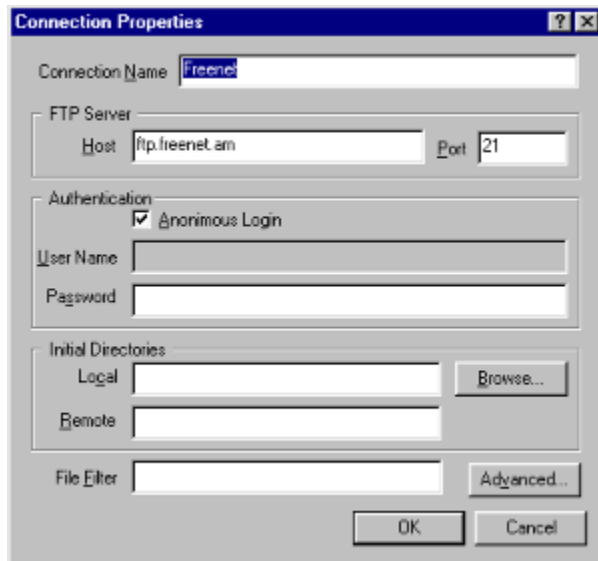
Auto-Retry Count 5

OK Cancel

### Connection Properties

Insert any site name as Connection Name and fill all basic information for connection.

After pushing OK button your information will store on Connection list.



**Connection Properties**

Connection Name: freenet

FTP Server

Host: ftp.freenet.am Port: 21

Authentication

☒ Anonymous Login

User Name:

Password:

Initial Directories

Local: Browse...

Remote:

File Filter: Advanced...

OK Cancel

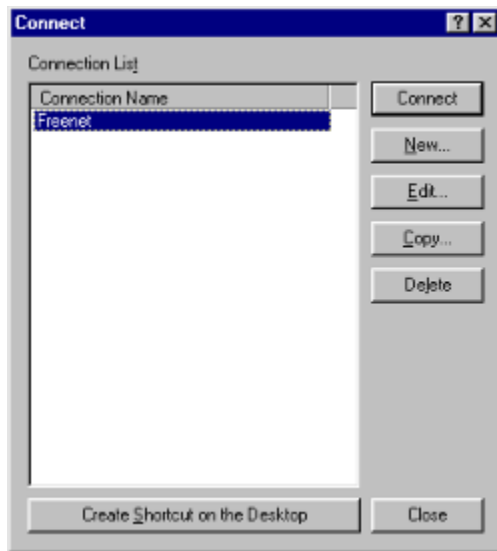


## Connect managing

You can create, edit, copy or delete site information you want to store in connection list using help of Connect dialog box.

To connect to any of the displayed sites, first click on the site name you want, and click then on the Connect button.

Moreover, you can create Shortcut on the Desktop to your any favorite site by highlighting site name in the list and clicking the "Create Shortcut on the Desktop" button.



## OPTIONS

## Dialing

Before dialing via modem using Dial-up connections you must write your registered name and login password for remote Host server.



A screenshot of a Windows-style 'Dialing' dialog box. The title bar is blue with the text 'Dialing' and standard window controls. The main area is light gray. It contains a 'Connect to' label, a 'User Name' field with the text 'Bill Kartor', and a 'Password' field with ten asterisks. Below these are two checkboxes: 'Save Password' (checked) and 'Connect Automatically' (unchecked). At the bottom are three buttons: 'Settings...', 'Dial', and 'Cancel'.

Connect to

User Name

Password

☒ Save Password

☐ Connect Automatically

## **DIALPROGRESS**

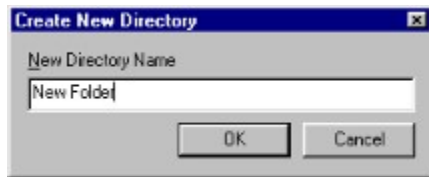
Progress Bar shows dialing in progress

**Redial Pause**



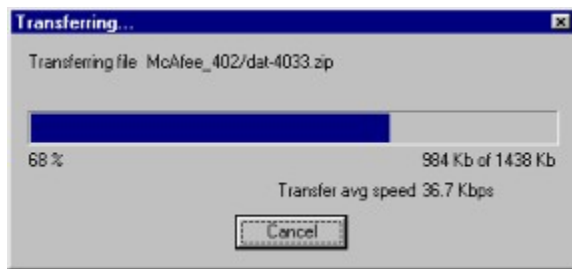
### **Make new folder**

If you wish to make a new folder on local or remote pane you must write new folder name in this dialog box.



### **Transfer processing information**

Shows information transfer progressing

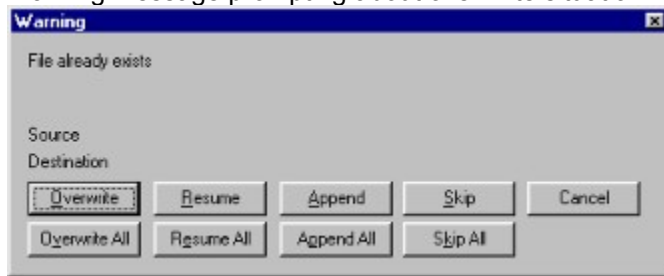


**DELETEPROGRESS**



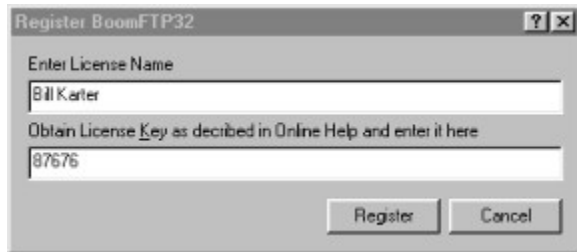
## OVERWRITECONFDLG

Warning message prompting about overwrite situation



## Registration

If you purchased BoomFTP32 product you need register to get a license key. This will allow you to have the version updated on time. Fill out this order form to be registered.



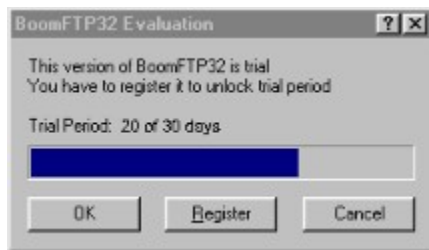
A screenshot of a Windows-style dialog box titled "Register BoomFTP32". The dialog box has a standard title bar with a question mark icon and a close button. It contains two text input fields. The first field is labeled "Enter License Name" and contains the text "Bill Kater". The second field is labeled "Obtain License Key as deccribed in Online Help and enter it here" and contains the text "87676". At the bottom right of the dialog box are two buttons: "Register" and "Cancel".

Field Label	Value
Enter License Name	Bill Kater
Obtain License Key as deccribed in Online Help and enter it here	87676

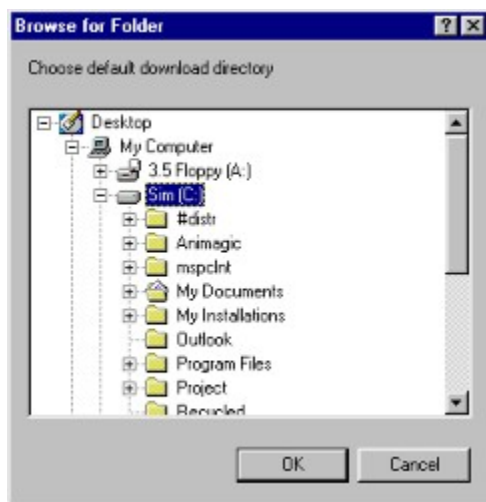
**REG**

**Trial version**

The Trial version message box shows how long time you can use this product until expiry date. Otherwise, you can register to unlock trial period latch.



VIEW\_SWITCHPANE



LOCAL\_OPEN\_FOLDERPANE

REMOTE\_OPEN\_FOLDERPANE





