

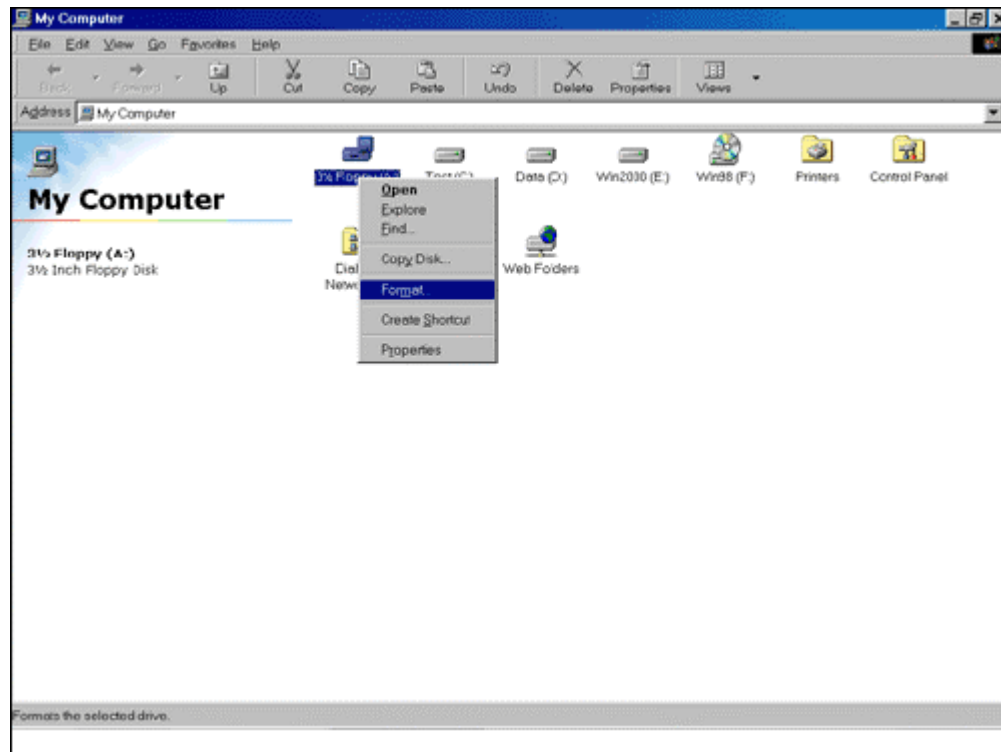
Flash BIOS Procedure :

STEP 1 :

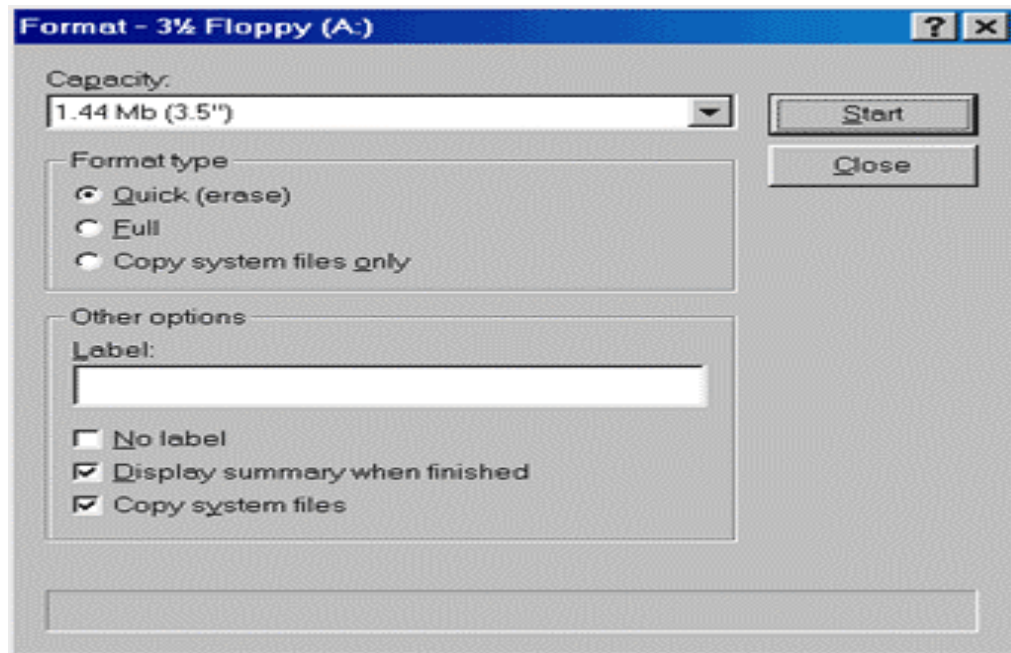
- (1) If your mainboard has a BIOS protection jumper, change the setting to allow BIOS flashing
- (2) Make a DOS boot diskette. (See example: Windows 98 O.S.)

Beware: Windows 2000/Me are not allowed to make a DOS boot diskette.

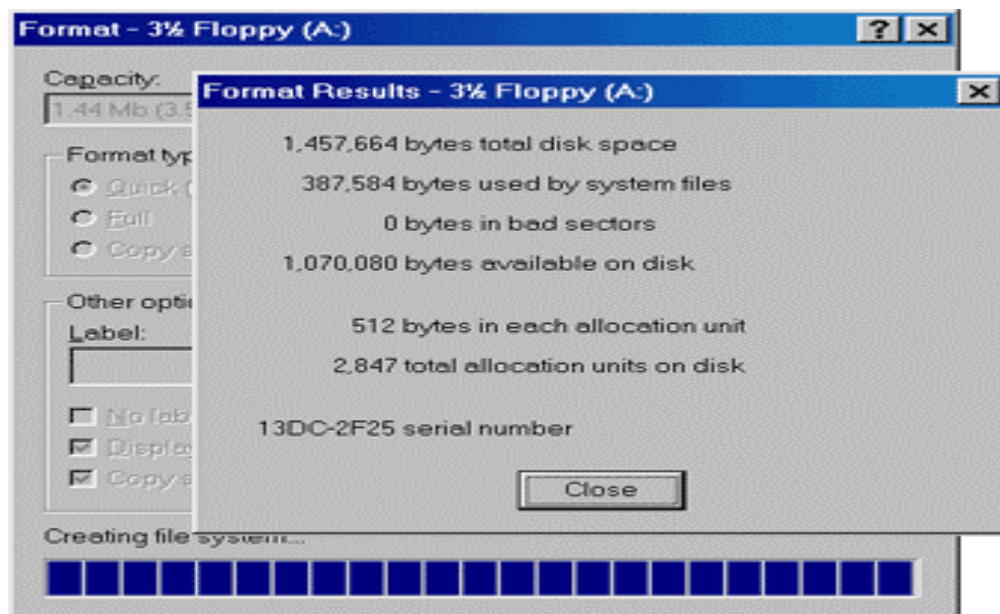
- a. With an available floppy disk in the floppy drive. Please leave the diskette "UN-write protected" type. Double click the "My Computer" icon from Desktop, then click "3.5 diskette (A)" and right click to select "Format (M)".



- b. Select the "Quick (erase)" for Format Type, and pick both "Display summary when finished" and "Copy system files", after that press "Start". That will format the floppy and copy the needed system files to it.



c. After the floppy has been formatted completely, please press "Close".

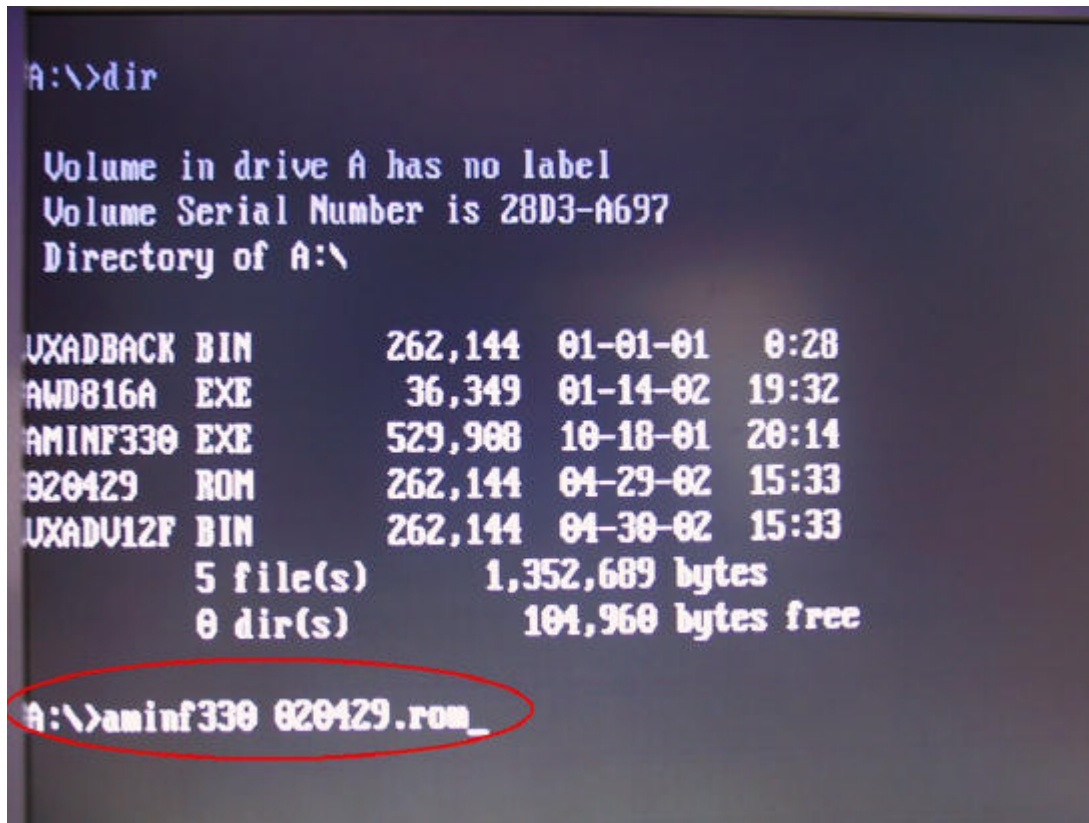


STEP 2 : Download BIOS and BIOS utility program.

- (1) Please go to ECS website <http://ecs.com.tw> and click "Download".
- (2) At "Download" zone, click the "BIOS" and "BIOS Flash Utility".
- (3) Choose an appropriate model name in accordance with user's manual or based on the motherboard revision that can be found near the AGP slot.

STEP 3 :

- (1) Make sure the system will boot from the floppy disk. After the system boot from floppy disk, type "A:\> dir" and press "Enter" to check the entire files in floppy A. Then type the "BIOS flash utility" and "BIOS file" after A:\>. In this case you have to type "A:\> aminf330 020429.rom " and then press "Enter".



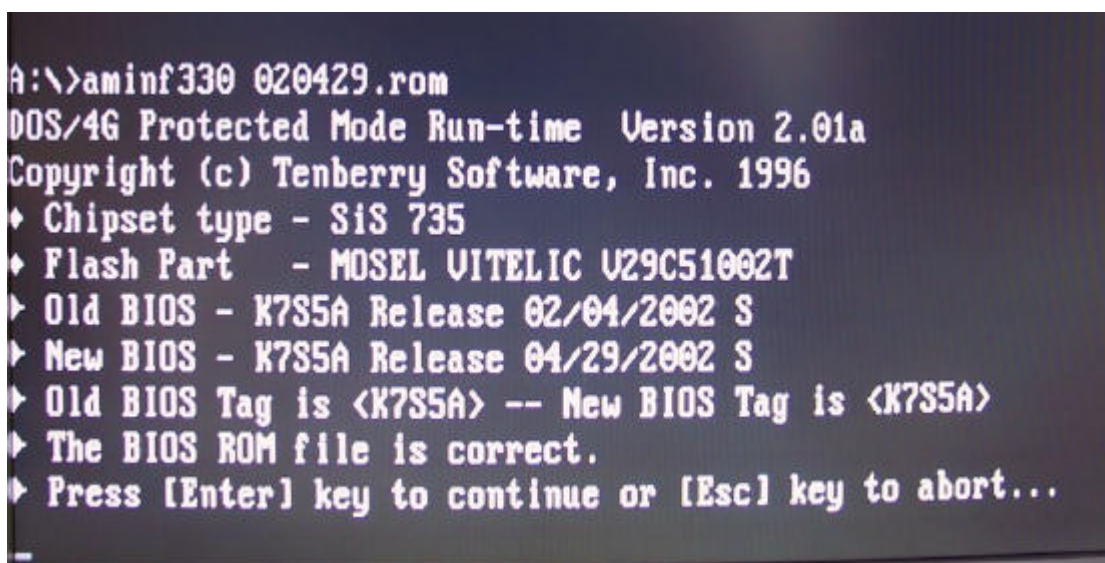
```
A:\>dir

Volume in drive A has no label
Volume Serial Number is 28D3-A697
Directory of A:\

UXADBACK BIN           262,144   01-01-01   0:28
AWD816A  EXE            36,349   01-14-02  19:32
AMINF330 EXE           529,908   10-18-01  20:14
020429   ROM            262,144   04-29-02  15:33
UXADU12F BIN           262,144   04-30-02  15:33
          5 file(s)      1,352,689 bytes
          0 dir(s)       104,960 bytes free

A:\>aminf330 020429.rom_
```

- (2) Now screen appears the following Flash Utility screen. Please check whether new BIOS tag is correct. Right after that, press [Enter] to start BIOS flash procedure or press [Esc] to abort.



```
A:\>aminf330 020429.rom
DOS/4G Protected Mode Run-time Version 2.01a
Copyright (c) Tenberry Software, Inc. 1996
* Chipset type - SiS 735
* Flash Part   - MOSEL VITELIC U29C51002T
* Old BIOS - K7S5A Release 02/04/2002 S
* New BIOS - K7S5A Release 04/29/2002 S
* Old BIOS Tag is <K7S5A> -- New BIOS Tag is <K7S5A>
* The BIOS ROM file is correct.
* Press [Enter] key to continue or [Esc] key to abort...
_
```



```
A:\>aminf330 020429.com  
DOS/4G Protected Mode Run-time Version 2.01a  
Copyright (c) Tenberry Software, Inc. 1996  
◆ Chipset type - SiS 735  
◆ Flash Part    - MOSEL VITELIC U29C51002T  
◆ Old BIOS - K7S5A Release 02/04/2002 S  
◆ New BIOS - K7S5A Release 04/29/2002 S  
◆ Old BIOS Tag is <K7S5A> -- New BIOS Tag is <K7S5A>  
◆ The BIOS ROM file is correct.  
◆ Press [Enter] key to continue or [Esc] key to abort...  
.....
```

Beware: Please do not turn off the system while you are upgrading BIOS. It will render your BIOS corrupted and system totally inoperative.

(3) When the BIOS flash completed. It will auto restart the system.

STEP 4 : Load BIOS defaults.

(1) Normally the system redetects all devices after BIOS has been upgraded.

Therefore, we highly recommend reloading the BIOS defaults after BIOS has been upgraded. This important step resets everything after the flash.

(2) The boot up screen will indicate your motherboard model and current BIOS version.

```

American
Megatrends AMIBIOS (C)2001 American Megatrends Inc.,
K7SSA Release 04/29/2002 S

AMD Athlon(tm) Processor,1200MHz
Checking NVRAM..Update OK
262144KB OK

DEL:Setup F8:Boot Menu F12:Network boot
Auto-Detecting Pri Master..IDE Hard Disk
Auto-Detecting Pri Slave...Not Detected
Auto-Detecting Sec Master..ATAPI CDROM
Auto-Detecting Sec Slave...Not Detected
Pri Master: QP100-06 SAMSUNG SV4002H
Ultra DMA Mode-5, S.M.A.R.T. Capable but Disabled
Sec Master: OS89 LITE-ON LTR-16102B

CMOS/SPRNG Checksum Bad

Press F1 to Run SETUP
Press F2 to load default values and continue_

```

(3) Press [F1] key to enter BIOS setup when system is boot up. Use the arrows to highlight the item "LOAD OPTIMAL SETTINGS" then press "Enter".

System will ask "Load Optimal Settings (Y/N)?" Press "Y" and "Enter" keys to confirm. Then press [F10] key to save & exit setup.

