

Power Browse

The Ultimate Browse Template

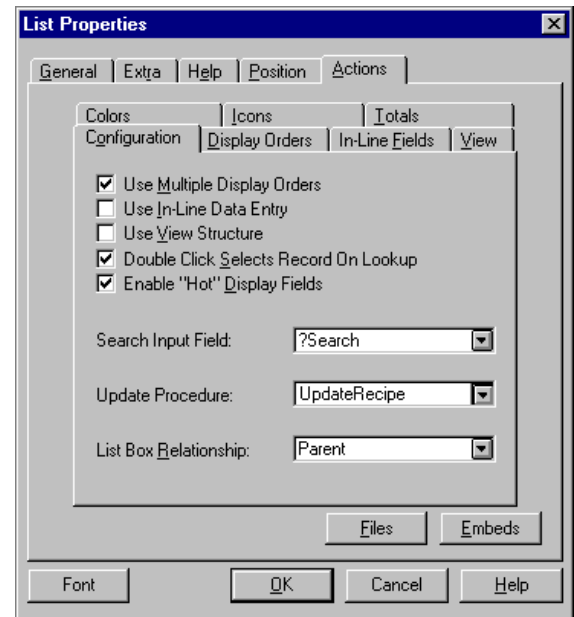
Building advanced power into your Clarion for Windows applications is easy if you start with the right templates. Power Browse lets you create feature-rich browse procedures effortlessly. Whether you're a novice or advanced user you'll be creating page-loaded list boxes with all the advanced features your users are demanding in no time at all. Take a look at the features below to see what's made Power Browse so popular.

- Uses a generic browse library for at least a 50% reduction in code size over the standard CW templates.
- Support for multiple sort order displays (allows you to specify a different key order and a different list box format for each display order), using a drop down list box, option box, or various VBX* tab controls for selecting sort orders.
- In place editing feature with batch entry mode capability. Both form and in-line updates can be used on the same list box so your users can quickly edit a few key fields or edit the entire record.
- Browse windows can be resized and the main list box will expand automatically.
- Mark records using a memory queue.
- Full on-line help facility and printed manual with step-by-step tutorial.
- Neat, readable and fully commented royalty free source code is generated.

Power Browse is now available for Clarion for Windows 1.5

New Features

- Conversion program included to upgrade your 1.0 apps.
- 16 and 32 bit support included.
- Wizards included to create Power Browse procedures.
- Full support for color and icons in the list box including different colors and icons for each multiple display order.
- Support for standard Clarion Tabs as a change order control on multiple display orders.
- New easier interface uses the standard list box formatter with the populate button to create multiple display orders.
- Enhanced mark records capabilities including a template to automatically process or print marked records.
- New reverse sort order feature allows you to display browses in reverse key order. Also, use the new reverse order control template to populate a button that allows your user to switch between normal and reverse orders.
- New Page-Loaded Drop Combo Browse control and more...



Look at our new Power Browse 1.5 interface!



"I know the quality of work this company does, it is surpassed by none. I have used other Power products for years, and there is nothing else on the market as comprehensive and tightly coded as these templates." - Ross Santos

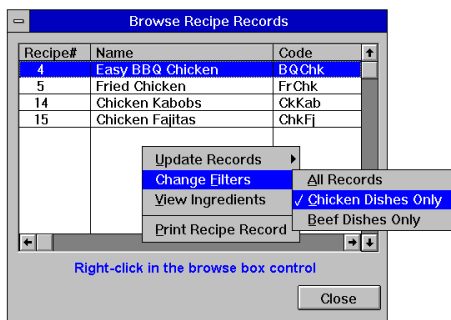
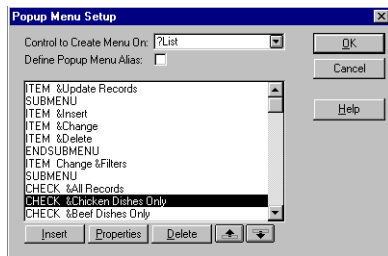
Power Popup

The easy way to do popup menus!

"The new Power Popup template is just another example of the great stuff we can expect from ToolCraft in the future. They really know how to simplify otherwise difficult tasks." - Danny L. Joe

Popup menus are a feature that your users will greatly appreciate. They allow users to quickly access common features with a simple click of the right mouse button. With the new CW 1.5 Popup function, you can certainly add this feature, however you still have to write the code to call the function and then manage all the menus yourself. Why go to all that extra effort?

The Power Popup template will let you add full-featured popup menus to your own applications just by answering a few prompts, that's right--no programming required. The Power Popup template provides you with an extensive popup menu library that is fully integrated into the application generator. In a matter of minutes you can register Power Popup and be creating full-featured popup menus without any coding.



Example popup menu created using template screen shown.

Clarion Popup vs. Power Popup functions:

Clarion for Windows 1.5 provides you with only one rudimentary function that leaves all the work of managing your popup menus up to you. However, Power Popup gives you a fully integrated template along with the following functions that make it easy to manage sophisticated popup menus:

- CreatePopup - create a new popup menu
- AliasPopup - use the same popup menu on multiple controls
- DisablePopup - disable a popup menu or menu item
- EnablePopup - enable a popup menu or menu item
- HidePopup - hide a popup menu or menu item
- UnhidePopup - unhide a popup menu or menu item
- PopupIsChecked - check to see if an item is checked
- SetPopupChecked - set a check item's status
- SetPopupText - set a menu items text string

Chart Wrapper for owners of ChartBuilder VBX*

Chart Wrapper allows you to add a full end-user interface for the Pinnacle ChartBuilder VBX* to your application without any coding at all. In addition, it provides you with a full set of functions to assist you in developing customized graphs with your own data. Chart Wrapper version 1.5 available soon.

30 Day Money Back Guarantee

If for any reason you are not completely satisfied with your purchase simply return it within 30 days to receive a full refund (less shipping and handling).

ToolCraft
Development Corporation

21040 Homestead Road
Suite 202
Cupertino, CA 95014

Power Browse: \$149.00 (1.5 Upgrade: \$49.95)
Power Popup: \$34.95 (1.5 Upgrade: \$10.00)
Chart Wrapper: \$49.95 (1.5 Upgrade: \$10.00)

Prices do not include shipping and taxes where applicable. Demos available on CompuServe in the TopSpeed forum under PTDEMO.ZIP in the 3rd party library.

To Order: Call (408)732-4300

Fax (408)732-4372
CompuServe: 75244,2146