



CD Station

Introduction

Custom Control Buttons

Display Panel

Standard Control Buttons

Menu Select Buttons

Play List Window

Cover Buttons

Keyboard Shortcuts

Introduction

The REALmagic CD Station is a flexible utility that allows you to play a variety of different CD formats. It will automatically detect and play movies in VideoCD and CD-i Digital Video format, MPG files from a standard data CD-ROM, and even audio tracks from standard audio CDs. Simply insert the CD and press PLAY.

CD Station features a familiar VCR-like user interface for ease of use, and offers advanced features such as looping and random playback. It also allows you to create a customized play list of your favorite files or tracks. A capture function allows you save any scene from the viewing window into a Windows BMP file in full 16.8 million colors.

Note: Your CD-ROM drive must be XA, Mode 2, Form 2 capable in order to play *VideoCD* or *CD-i* Digital Video formats.

Standard Control Buttons

The Standard Control Buttons resemble a standard VCR-like interface.

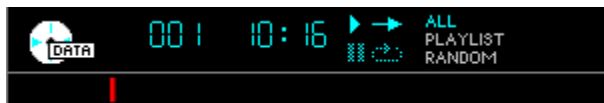
[For information about a particular item, select it from the following figure:](#)



Display Panel

The Display Panel shows the type of the CD currently in the drive, and provides information about the current clip, such as its track number and play time. The Progress Bar (with the progress indicator shown in red) tracks the progression of the clip being played (you can click and drag this bar to jump to different sections of the current file/track).

The symbols and words on the right of the play time show the status and play modes. Either the play or pause status light will be lit during play. The straight or looping arrow symbols indicate whether the CD will play through once or if it will be repeated continuously. The words indicate whether all the files/tracks on the CD will be played in sequence or randomly, or only the files/tracks listed in the PlayList will play in the order indicated.



The Status Window (shown when the Standard controls are hidden) will also display the name of the clip being played.



Custom Control Buttons

Control playback display.

[For information about a particular item, select it from the following figure:](#)



Play List Window

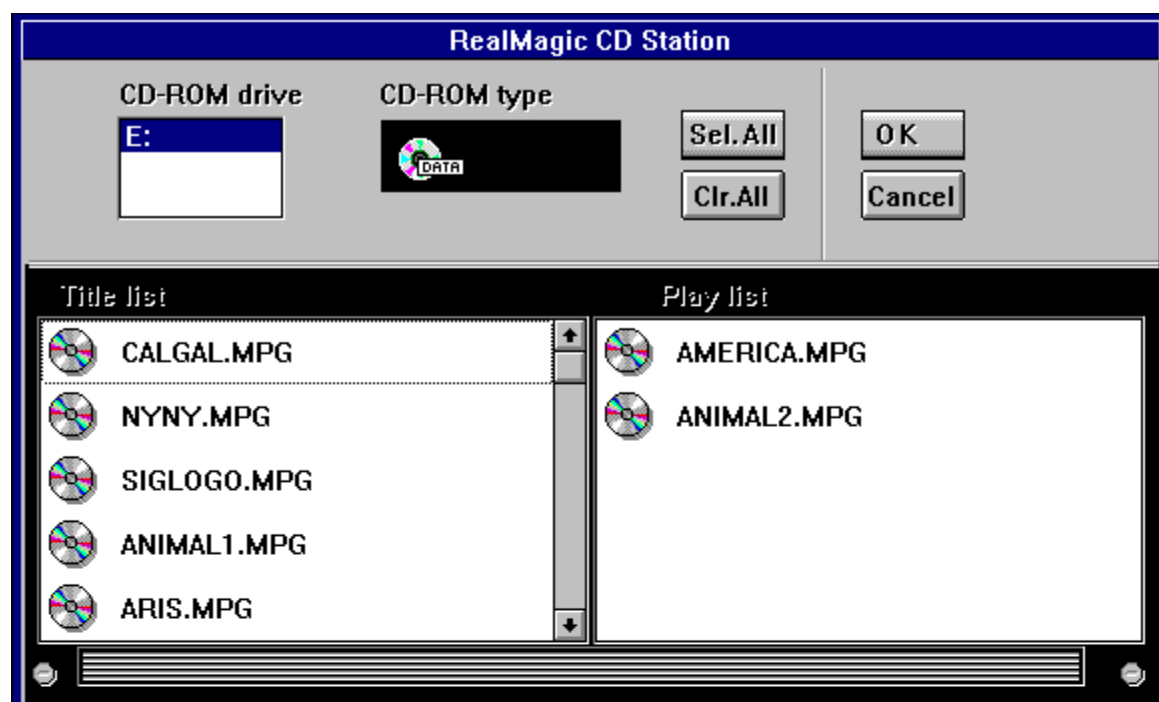
Clicking the PlayList button brings up the Play List window. From this window, you can create a Play List of your favorite clips.

Note: This can only be done with CDs that have more than one track and are not of *VideoCD 2.0* or *CD-i* format.

To create a Play List:

1. Select the clips icon that you wish to add to the Play List from the Title List, and then drag it to over the Play List box. To move all the clips in the Title List to the Play List, press the **Sel. All** (Select All) button. To remove all of the clips in the Play List, press the **Clr. All** (Clear All) button.
2. To remove a clip from the Play List, select the clips icon and drag it to the Title List box. To change a clips playing order, drag and re-position its icon in the Play List box. Click **OK** when you have finished adding clips to the Play List.
3. Click the Play Mode button in the main window until the word Play List appears lighted in the Display Panel. All clips included in the play list will play in the order indicated.

To cancel your modifications press the **Cancel** button.



Menu Select Buttons (VideoCD 2.0 only)

VideoCD 2.0 discs feature embedded playback controls. When you play a VideoCD 2.0 disc, REALmagic CD Station will display additional Select Buttons at the lower right corner. Once you click on the selection number, this number will appear in the display panel. Use the left arrow to erase the last entry and the right arrow to choose the default. Press Enter (the bent arrow) to accept your selection.



Cover Buttons

These buttons (shown in cyan) cover/uncover the REALmagic CD Station About dialog box and the Standard Control Buttons. When the Standard Control buttons are covered, the display panel shows the name of the selection being played.



Keyboard Shortcuts

Key	Function	Notes
Custom Controls		
Alt+o, Alt+O	Counter/Timer	(Window mode only)
Alt+l, Alt+L	Play List	(Window mode only)
Alt+SpaceBar <i>Item</i>	Maximize/Restore	(Window mode only)
Alt+f, Alt+F	FullScreen	(Window mode only)
Alt+F4	Power	
Alt+w, Alt+W	Window	(Full Screen mode only)
Standard Controls		
Alt+e, Alt+E	Eject CD	
Alt+s, Alt+S	Stop playback	
Alt+p, Alt+P	Start playback	
Alt+a, Alt+A	Pause playback	
Alt+i, Alt+I	Rewind 10 secs	
Alt+d, Alt+D	Fast Forward 10 secs	
Alt+v, Alt+V	Previous Track	
Alt+n, Alt+N	Next Track	
Alt+r, Alt+R	Repeat mode	
Alt+m, Alt+M	All, Random, PlayList modes	
Alt+c, Alt+C	Bitmap Capture	
VideoCD 2.0 Panel		
Alt+0 ... Alt+9	Select menu item	
Alt+Enter	Previous menu	
Alt+Left Arrow	Go back one digit	
Alt+Right Arrow	Move back to default	

Time/Counter

Toggles the on-screen display of the track number and elapsed time of the track being played.

Maximum Size

Expands REALmagic CD Station to fill your entire screen.

Full Screen

Pressing this button will cause the current clip to occupy the entire screen area. Clicking the left mouse button will bring up the Control Panel Interface. This is a simplified version of the REALmagic CD Station controls that allow you to control the playing of the clips. Click on the playing window to hide the Control Panel Interface.

To return to the normal REALmagic CD Station interface, click on the Window button.

Power

Press this button to exit the REALmagic CD Station.

Volume bar

Click and drag the volume bar to control the volume of the audio signal.

Tray Open/Close

Acts as the Eject or Tray Open/Close button of your CD-ROM drive (applicable only if your CD-ROM drive supports this feature).

Stop

Click this button to stop playing current selection.

Pause

Click to pause playback of the current clip (press Play button to resume playing).

Play

Click to initiate playback.

Rewind & Advance

Click to skip backward or forward within the same video clip.

Skip to Previous/Next

Click to move between the previous or next clip.

Repeat

Click to toggle looping play of all the selected clips (the default is OFF).

Play Mode

Click to cycle the play mode between ALL clips in sequence , all clips in RANDOM order, or PLAYLIST in sequence modes (the default setting is ALL).

Capture

This button allows you to capture the image in the playing window into a Windows BMP (bitmap) file. When you click this button, playback will pause and a file menu will appear to allow you to save the image. The image will be captured in its original resolution (normally 352 x 240) in 16.8 million colors.

Play List

Click this button to bring up the [Play List Window](#), which allows you to create a sequential list of your favorite clips for playback.

Window Button



Click this button to return the REALmagic CD Station to its normal window interface.

