

Appendix A - Error Codes

WebCopier can show two types of errors: HTTP Status Code and Error Number.

HTTP Status Codes

HTTP Status Code	Description
-1	The file is not found.
-2	Cannot parse the file name.
-3	Cannot complete the file download .
200	The request completed successfully.
201	The request has been fulfilled and resulted in the creation of a new resource
202	The request has been accepted for processing , but the processing has not been completed
203	The returned meta information in the entity-header is not the definitive set available from the origin server.
204	The server has fulfilled the request, but there is no new information to send back.
205	The request has been completed, and the client program should reset the document view that caused the request to be sent to allow the user to easily initiate another input action.
206	The server has fulfilled the partial GET request for the resource.
300	The server couldn't decide what to return.
301	The requested resource has been assigned to a new permanent URI, and any future references to this resource should be done using one of the returned URIs.
302	The requested resource resides temporarily under a different URI.
303	The response to the request can be found under a different URI and should be retrieved using a GET method on that resource.
304	The requested resource has not been modified.
305	The requested resource must be accessed through the proxy given by the location field.
307	The redirected request keeps the same verb. HTTP/1.1 behavior.
400	The request could not be processed by the server due to invalid syntax.
401	The requested resource requires user authentication.
402	Not currently implemented in the HTTP protocol.
403	The server understood the request, but is refusing to fulfill it.
404	The server has not found anything matching the requested URI.
405	The method used is not allowed.
406	No responses acceptable to the client were found.
407	Proxy authentication required.
408	The server timed out waiting for the request.
409	The request could not be completed due to a conflict with the current state of the resource. The user should resubmit with more information.
410	The requested resource is no longer available at the server, and no forwarding address is known.
411	The server refuses to accept the request without a defined content length.
412	The precondition given in one or more of the request header fields evaluated to false when it was tested on the server.
413	The server is refusing to process a request because the request entity is larger than the server is willing or able to process.
414	The server is refusing to service the request because the request URI is longer than the server is willing to interpret.

415	The server is refusing to service the request because the entity of the request is in a format not supported by the requested resource for the requested method.
500	The server encountered an unexpected condition that prevented it from fulfilling the request.
501	The server does not support the functionality required to fulfill the request.
502	The server, while acting as a gateway or proxy, received an invalid response from the upstream server it accessed in attempting to fulfill the request.
503	The service is temporarily overloaded.
504	The request was timed out waiting for a gateway.
505	The server does not support, or refuses to support, the HTTP protocol version that was used in the request message.

Error Numbers

Error Number	Description
6	The handle that was passed to the API has been either invalidated or closed.
18	No more files have been found.
259	No more items have been found.
12001	No more handles could be generated at this time.
12002	The request has timed out.
12003	An extended error was returned from the server. This is typically a string or buffer containing a verbose error message.
12004	An internal error has occurred.
12005	The URL is invalid.
12006	The URL scheme could not be recognized, or is not supported.
12007	The server name could not be resolved.
12008	The requested protocol could not be located.
12009	A query request specified an invalid option value.
12010	The length of an option supplied to query is incorrect for the type of option specified.
12011	The requested option cannot be set, only queried.
12012	The Win32 Internet function support is being shut down or unloaded.
12013	The request to connect and log on to an FTP server could not be completed because the supplied user name is incorrect.
12014	The request to connect and log on to an FTP server could not be completed because the supplied password is incorrect.
12015	The request to connect and log on to an FTP server failed.
12016	The requested operation is invalid.
12017	The operation was canceled, usually because the handle on which the request was operating was closed before the operation completed.
12018	The type of handle supplied is incorrect for this operation.
12019	The requested operation cannot be carried out because the handle supplied is not in the correct state.
12020	The request cannot be made via a proxy.
12021	A required registry value could not be located.
12022	A required registry value was located but is an incorrect type or has an invalid value.
12023	Direct network access cannot be made at this time.
12024	An asynchronous request could not be made because a zero context value was supplied.
12026	The required operation could not be completed because one or more requests are pending.
12027	The format of the request is invalid.
12028	The requested item could not be located.
12029	The attempt to connect to the server failed.

12030	The connection with the server has been terminated.
12031	The connection with the server has been reset.
12032	The Win32 Internet function needs to redo the request.
12033	The request to the proxy was invalid.
12034	A user interface or other blocking operation has been requested.
12036	The request failed because the handle already exists.
12037	SSL certificate date that was received from the server is bad. The certificate is expired.
12038	SSL certificate common name (host name field) is incorrect—for example, if you entered www.server.com and the common name on the certificate says www.different.com.
12039	The application is moving from a non-SSL to an SSL connection because of a redirect.
12040	The application is moving from an SSL to a non-SSL connection because of a redirect.
12041	The content is not entirely secure. Some of the content being viewed may have come from unsecured servers.
12042	The application is posting and attempting to change multiple lines of text on a server that is not secure.
12043	The application is posting data to a sever that is not secure.
12044	The server is requesting client authentication.
12045	The function is unfamiliar with the Certificate Authority that generated the server's certificate.
12046	Client authorization is not set up on this computer.
12047	The application could not start an asynchronous thread.
12048	The function could not handle the redirection, because the scheme changed (for example, HTTP to FTP).
12049	Another thread has a password dialog in progress.
12053	The request requires a CD-ROM to be inserted in the CD-ROM drive to locate the resource requested.
12110	The requested operation cannot be made on the FTP session handle because an operation is already in progress.
12111	The FTP operation was not completed because the session was aborted.
12130	An error was detected while parsing data returned from the Gopher server.
12131	The request must be made for a file locator.
12132	An error was detected while receiving data from the Gopher server.
12133	The end of the data has been reached.
12134	The supplied locator is not valid.
12135	The type of the locator is not correct for this operation.
12136	The requested operation can only be made against a Gopher+ server, or with a locator that specifies a Gopher+ operation.
12137	The requested attribute could not be located.
12138	The locator type is unknown.
12150	The requested header could not be located.
12151	The server did not return any headers.
12152	The server response could not be parsed.
12153	The supplied header is invalid.
12154	The query request is invalid.
12155	The header could not be added because it already exists.
12156	The redirection failed because either the scheme changed (for example, HTTP to FTP) or all attempts made to redirect failed (default is five attempts).
12157	The application experienced an internal error loading the SSL libraries.
12158	The function was unable to cache the file.
12159	The required protocol stack is not loaded and the application cannot start WinSock.
12164	The Web site or server indicated is unreachable.

12163	The Internet connection has been lost.
12165	The designated proxy server cannot be reached.
12166	There was an error in the automatic proxy configuration script.
12167	The automatic proxy configuration script could not be downloaded.
12168	The redirection requires user confirmation.
12169	SSL certificate is invalid.
12170	SSL certificate was revoked.
12171	The function failed due to a security check.

Frequently Asked Questions

General

1. What does WebCopier do that Internet Explorer's synchronize function doesn't?
 2. I do not know when and how to use WebCopier.
 3. Do I need to have any specific browser to download web pages?
 4. How should I configure WebCopier to work with AOL?
 5. Does free version of WebCopier show advertisement?
-

Installation

1. How can I install WebCopier?
 2. When WebCopier is unpacking itself, I got a "Corrupt Cabinet File" error. What is wrong?
 3. Why do I have "Bad or missing header information message" during the installation?
 4. I just ran WebCopier setup and it seems to run fine, but there is no entry in my Start Menu for it that I can find. How can I start it?
 5. I get the error message "Installation Failed, Component: shared dlls, File group: shared dlls". What is wrong?
-

Download

1. Please provide detailed step by step procedures for how I can download a website.
2. Is there any way around the download limit of 500 files with WebCopier?
3. When I start the download, all I get is the first page and that is all. What I might be doing wrong?
4. Every time I want to continue to download a project I saved previously, the program starts to download from the beginning the web page. What's wrong?
5. Is there a way to define that WebCopier will download a tree starting from a specific directory, or does it go for the entire site regardless?
6. I would like to copy just 1 page (1 level) of a specific web site. How can I do this?
7. I connect to the Internet through a Proxy server that needs a password and a user name. Where would I type the entries?
8. Can WebCopier download multiple sites without creating different projects?

9. Is it possible to schedule a job or start the download of a site automatically when the program starts?
 10. Some web sites have large ".exe" and ".zip" files within them. How can I make WebCopier ignore them?
 11. Is there a way to use a "local" file (with URLs) as a starting point for WebCopier?
 12. Is there a way to retry failed links?
 13. Is there a way to retain the URLs of links that were not followed so they can be followed later when browsing?
 14. Some sites have parameters like "programe?param1=xx¶m2=yy". Could WebCopier be setup so that the parameters could be entered?
 15. How to select the type of files to download (e.g. *.pdf)?
 16. Is there a way to set the level of links to retrieve?
 17. How can I download files from a directory and all its subdirectories avoiding all other files on that site?
 18. I am trying to access a web site that requires a username and password. I typed them in the "Project Setting" window. But all I get back is the login screen. What am I doing wrong?
 19. What is the Error number 12002? Is there a way to avoid it?
 20. Is there any way to extend the timeout length?
 21. Where can I find definition of error codes shown in log file?
-

Browsing

1. How can I open and view a downloaded site with Webcopier?
 2. Is there a way to view a downloaded site in Internet Explorer or Netscape?
 3. How can I change the font size when displaying the copied site?
 4. Can I browse a web site offline while it's being downloaded?
 5. I downloaded my first project and was able to view it offline. The next time I downloaded another site and also saved it as a wcp file. When I went to view it offline no matter which wcp file I selected I viewed the latest project I downloaded.
 6. How can I change the default language settings in the Integrated browser and the Contents tree?
-

Other

1. Can I automatically transfer a URL to WebCopier?
2. Do you have a version of WebCopier for Windows 3.x?
3. How can I see the Contents Tree with HTML files only and hide all other files?

4. Does the program understand JavaScript, specifically commands that open up new windows?
 5. I don't want to download the site (in fact I have it all on my local disk) but I want to create just the site mapping to easy access to a specific file. How can I do that?
 6. I want to collect downloaded files on a CD. When I copy the whole downloaded tree to the CD, the internal references still point to files on the hard disk. How would I create a project that can be stored on a CD-ROM lately?
 7. Does WebCopier support "drag and drop"?
-

General

[Top](#)

1. What does WebCopier do that Internet Explorer's synchronize function doesn't?

IE is very powerful web browser with offline module implemented as an extra feature. WebCopier is designed and implemented primarily as an offline tool. It allows WebCopier to handle offline tasks much better than IE.

Here is a list of major advantages of using WebCopier:

- WebCopier downloads websites much faster than IE.
- WebCopier can download whole website, IE has a limit of 3 download levels.
- WebCopier gives much better control on what files you want to download, and what files to skip.
- WebCopier shows user actual website map that allows to study site structure.
- WebCopier can print all downloaded files at once.

and many other...

2. I do not know when and how to use WebCopier.

You can use WebCopier every time you want to copy a web site or a part of it to your computer.

To download a Web site you need:

- Create New Project or Open existing one.
- Start download by choosing "Project / Start Download" menu or pressing special button on the Toolbar.
- WebCopier will show the "Download Info" dialog that displays the information about the ongoing download.
- During the download you can use the Contents Tree to see what files have been downloaded
- If any Error will happen during the download it can be viewed in the Log File Window. Use the Appendix A to find the error description.
- You can use the Integrated browser to see the downloaded files or browse the Web.
- The program will stop download automatically when the web site will be downloaded or certain stopping criteria will be reached.
- You can stop manually by choosing "Project / Stop Download" menu, pressing Stop button on the Toolbar or the Stop button of the "Download Info" dialog.

3. Do I need to have any specific browser to download web pages?

WebCopier will work if you are using Windows 95, 98, ME, NT or 2000 even when you do not have any browser installed. Few features (like the Integrated browser and printing) will not be available without Internet Explorer installation.

4. How should I configure WebCopier to work with AOL?

WebCopier settings depend on the method you are using to get connected to AOL.

If you are using AOL program (or if the "Connection" list is empty):

- Open "WebCopier Options / Connection" window
- Choose the "Direct (cable modem, LAN)" option
- Press OK

You will need to connect to AOL before you start to download files using WebCopier.

You also should disconnect from AOL when the download is completed.

If you are using Windows Dial-Up networking ("Connection" list isn't empty):

- Open "WebCopier Options / Connection" window
- Choose the "Using a modem..." option
- Use the "Connection" list to find you AOL connection
- Press OK

In this case, WebCopier will automatically dial AOL before download and disconnect from AOL when the download is completed.

5. Does free version of WebCopier show advertisement?

Version 2.5 (and later) doesn't show advertisement and will uninstall advertisement module installed by previous versions of WebCopier.

Installation

[Top](#)

1. How can I install WebCopier?

If you have downloaded file named "wcopier.exe", just run it. If the file name has extension ".zip", you need to decompress it with a program such as WinZip. Then run the file "setup.exe".

2. When WebCopier is unpacking itself, I got a "Corrupt Cabinet File" error. What is wrong?

It seems that the program was not downloaded correctly.

You need to try again and it's better to download it from WebCopier site

3. Why do I have "Bad or missing header information" message during the installation?

The same problem. Please download WebCopier again.

4. I just ran WebCopier Setup and it seems to run fine, but there is no entry in my Start Menu for it that I can find. How can I start it?

The WebCopier installation should create a folder "Start \ Programs \ WebCopier" that has the link to WebCopier v2.x. If this folder was not created by some reason, you still can start the program by running the file "WebCopier.exe" from the directory, where it was installed. The default directory name is "C:\Program Files\WebCopier".

5. I get the error message "Installation Failed, Component: shared dlls, File group: shared dlls" during install and it stops.

Please close all applications and try to run the installation again. The error you had means that some of the programs are using the DLL and the installation cannot check its version to decide whether to copy it over, or not.

Download

[Top](#)

1. Please provide detailed step by step procedures for how I can download a website.

Here is the list of steps:

- Start WebCopier. You can do it by clicking on "Start / Programs / WebCopier / WebCopier" shortcut.
- If this is the first time you are using WebCopier go through Connection Wizard and specify your Internet connection.
- Create a new project by clicking on "File / New" menu.
- You will see New Project Wizard.
 - As a "Project Title" type "WebCopier site"

- As "URL" type www.maximumsoft.com
- Leave "User ID" and "Password" empty
- Use default "Project Directory" name ("C:\Program Files\Downloads\WebCopier_site")
- Use "default download options"
- Click on "Finish"
- Now you need to download the site. To do that click on "Project / Start Download" menu.
- You will be asked to save the project file. Accept default name "WebCopier site.wcp" and click on "Save".
- WebCopier will start the download.
- When "Download Status" will show "Completed..." press "Close" button.
- Now you have the site downloaded. All files are stored in the project directory, which is "C:\Program Files\Downloads\WebCopier_site".
- To view downloaded site double click on the root node of the "Contents Tree" located on the left side of the program.

When you will need to create a new project to download another website repeat these steps, and choose different "Project Title", website URL, "Project Directory" and project file name.

2. Is there any way around the download limit of 500 files with WebCopier?

To download more than 500 files open "Project Settings / Download" window and change the "Max. Number of Files" field.

You can do it before you start website download, as well as during the download, if you see that WebCopier approaches the limit.

3. When I start the download, all I get is the first page and that is all. What I might be doing wrong?

There are two common reasons why WebCopier downloads only a few files from a web sites.

- The rest of the web site is located on a different server.
By default WebCopier downloads files from the starting server only. To remove this restriction select "All Servers" option in "Project Settings / Advanced / URL Filters" window or create URL Filters that allow download from this server.
- The downloaded files do not have common HTML file extension, like .htm or .html.
For example, if a file (which contains HTML code) has extension .dll, it won't be considered by WebCopier as HTML file and, as the result, won't be searched for HTML links. To inform WebCopier that it should consider this file as HTML file, add extension "dll" to HTML group in "Project Settings / Advanced / File Filters" window.

4. Every time I want to continue to download a project I saved before, the program starts to download from the beginning the website. What's wrong?

- When you start download, choose the option "Continue previous download". This option is available when you have downloaded the project before, and the download was not completed.
- Use the option "Update Files / When Changed" ("Project Settings / Advanced / Download" window). This is default setting. To check, have the files been changed since the previous download, or not, the program has to start the checking from the very beginning of the website. If the file was not changed, it won't be downloaded again.
- Uncheck the "Initialize Tree before Download" option ("Project Settings / Contents" window). The fact, that at the beginning of the downloaded the tree disappears, may cause confusion, you may think that all the files will be downloaded again. In version 2.1 (and higher) the "Initialize Tree before Download" option is unchecked by default.
- You may set the "Update Files" option to "Never" ("Project Settings / Advanced / Download" window). In this case, if the file does exist on your disk, it won't even be checked for any changes and won't be downloaded.

5. Is there a way to define that WebCopier will download a tree starting from a specific directory, or does it go for the entire site regardless?

To start download from a specific directory you need to specify the directory URL, instead of site URL, in the "Project Settings / General" window. The program will download the directory first. Then it can try to download the rest of the site. To avoid it you need to use some restrictions in the "Project Settings / Download" window, for example, limit the number of files the program can get or check the option "Within the starting Dir. & below" in the

"Project Settings / Advanced / URL Filters" window.

6. I would like to copy just 1 page (1 level) of a specific web site. How can I do this?

Check the "Main Links" option in the "Project Settings / Advanced / Download" window and set the value equal to 0.

7. I connect to the Internet through a Proxy server that needs a password and a user name. Where would I type the entries?

You can enter them in the "WebCopier Options / Connection / Proxy Server" window.

Some proxy servers require that you also provide your domain name.

In this case you should enter your user name in the following form "domain/username".

8. Can WebCopier download multiple sites without creating different projects?

WebCopier can download multiple sites as one project if one of them has a link to another. You just need to set the option "All Servers" in the "Project Settings / Advanced / URL filters" window. It's recommended to set Directory structure to "Based on URLs" ("Project Settings / Advanced / Other" window) in this case.

If the sites are completely unrelated you need to create different projects. But even in this case, you can run several copies of WebCopier simultaneously to download different projects in parallel or schedule a multiple projects download.



If you are using **Registered** version of WebCopier, multiple sites can be specified in one project. It allows downloading of several sites at once.

9. Is it possible to schedule a job or start the download of a site automatically when the program starts?

Yes. Use "Edit / Schedule" menu or the corresponding toolbar button to schedule project(s) download.

Also the program provides command line equivalents for its options so you can use it with scheduling utilities such as Windows 98 Scheduler and System Agent, which comes with the Windows 95 Plus! pack.

Command line options to start a download:

Webcopier.exe project.wcp[wct] -d -e -disc -shut -conv

project.wcp[wct] – project or template full file name

-d – start download automatically

-e – close the program when the download is done

-disc – disconnect from the Internet after the download is completed

-shut – shutdown the computer after the download is completed

-conv – convert links for offline browsing

The project / template file name must include full path. If the name has spaces, it should be enclosed in double quotations.

10. Some web sites have large ".exe" and ".zip" files within them. How can I make WebCopier ignore them?

You can use File Filters ("Project Settings / Advanced / File Filters" window). Select "Archive" category and uncheck the "zip" extension. Then select "Other" category and uncheck "exe" extension. After that WebCopier will ignore all files with these extensions.

Also WebCopier has the ability to specify the upper file size limit you allow the program to download. This number can be found in the "Project Settings / Download" window and is named as "Max. File Size". The default value is 1 MB, but you can decrease it to ignore large ".exe" and ".zip" files.

11. Is there a way to use a "local" file (with URLs) as a starting point for WebCopier?

Yes. Go to the "Project Settings / General" window, click on the ">>" button, choose "Local Files" and select the file in the "Open" window. The program will use the file as the starting point for the download. If the file has link to web sites on the Internet, check the option "All Servers" in the "Project Settings / Advanced / URL Filters" window.

12. Is there a way to retry failed links?

You can specify the number of download retries in the "Project Settings / Advanced / Download" window. The default value is 5.

Also, if your previous download includes failed links, you will have an option to download only these links.

13. Is there a way to retain the URLs of links that were not followed so that they can be followed later when browsing?

The program can change the URL of links that had been downloaded. If the URL was not downloaded, it will not be changed.

14. Some sites have parameters like "programe?param1=xx¶m2=yy". Could WebCopier be setup so that the parameters could be entered ?

Go to the "Project Settings / General" window and type a web site URL, including the name of the starting HTML file, followed by your parameters. For example, instead of "www.mysite.com" enter "www.mysite.com/index.htm?param1=xx¶m2=yy".

15. How to select the type of files to download (e.g. *.pdf)?

You can use File Filters ("Project Settings / Advanced / File Filters" window). They allow you to selectively download files by file type.

16. Is there a way to set the level of links to retrieve?

Yes. You can specify the level in the "Project Settings / Advanced / Download" window.

17. How can I download files from a directory and all its subdirectories avoiding all other files on that site?

Check the option "Within the starting Dir. & below" in the "Project Settings / Advanced / URL Filters" window.

18. I am trying to access a web site that requires a username and password. I typed them in the "Project Settings" window. But all I get back is the login screen. What am I doing wrong?

It seems, that the site you are trying to download uses "cookies" to store / retrieve user name and password. Please try the following:

- Use WebCopier Integrated browser to access the site, enter your user name and password to log in. You just need to log in and see a first page. The "cookie" will be saved.
- Start the download.



If you are using **Registered** version of WebCopier, check "Submit HTML Login Forms" option ("Project Settings / Advanced / Download" window).

19. What is the Error number 12002? Is there a way to avoid this?

The Error 12002 means the program does not receive a response from a web server during certain period of time. To avoid it increase the "Timeout" value in the "Project Settings / Advanced / Download" window. If it does not help, decrease the "Number of files to download simultaneously" in the "Project Settings / Download" window.

20. Is there any way to extend the timeout length?

Yes, you can change it in the "Project Settings / Advanced / Download" window.

21. Where can I find definition of error codes shown in log file?

You can find this information in online help (Appendix A).

Browsing

[Top](#)

1. How can I open and view a downloaded site with WebCopier?

There are two ways how to view a downloaded site.

- You can use WebCopier integrated browser if you have Microsoft Internet Explorer installed (not necessarily running) on your computer. Click on the root node of the Contents Tree, then double click on the first tree subnode. The integrated browser will load the site from your disk.
- You can use any regular browser, like Netscape Communicator or Internet Explorer. Check the option "Use External Browser..." in the "Project Settings / Contents" window. Then double click on

the first tree subnode.

or

- Start your browser manually and load the first HTML file of the site. The file is located in the WebCopier project directory and has the same name as the file you specified as the site URL or "default.htm".

2. Is there a way to view the downloaded web sites in Internet Explorer or Netscape?

Check the option "Use External Browser..." in the "Project Settings / Contents" window. Then double click on the first tree subnode.

3. How can I change the font size when displaying the copied site?

To change the font please use "Browser / Font Size" menu.

4. Can I browse a web site offline while it's being downloaded?

Yes. You can move the "Download Info" dialog away to get access to the Contents Tree and use the Integrated browser or your regular web browser to view the files that have been downloaded already.

5. I downloaded my first project and was able to view it offline. The next time I downloaded another site and also saved it as a wcp file. When I went to view it offline no matter which wcp file I selected I viewed the latest project I downloaded. What am I doing wrong?

It happened because these two projects have been saved by WebCopier in the same directory. To avoid it you should specify unique directory name for each project. You can do it in the "Project Settings / General" window.

6. How can I change the default language settings in the Integrated browser and the Contents tree?

To change language settings in the Integrated browser:

- load file in the browser
- click right mouse button on the browser
- go to Encoding menu
- select your language

To change language settings in the Contents tree:

- open "WebCopier Options / Advanced" window
- click on the "Contents Font" button
- choose the font which supports your language

Other

[Top](#)

1. Can I automatically transfer a URL to WebCopier?

Yes. Go to the "Project Settings / General" window, click on the ">>>" button, choose "Internet Explorer Favorites" or "Netscape Bookmarks", select the URL and press OK. You will see the URL is copied to the Address field. Also you can transfer URL from your regular web browser through Windows Clipboard by using Cut and Paste.

2. Do you have a version of WebCopier for Apple Macintosh?

Sorry, to use WebCopier you have to use Windows 95, 98, ME, NT or 2000.

3. How can I see the Contents Tree with HTML files only and hide all other files?

Go to the "Project Settings / Contents" window and select "Show Only Text (HTML) Files".

4. Does the program understand JavaScript, specifically commands that open up new windows?

Yes, the latest version of WebCopier has improved JavaScript parsing.

5. I don't want to download the site (in fact I have it all ready on my local disk) but I want to create just the site mapping to easy access to a specific file. How can I do that ?

You need to specify the starting local file as the site URL. To do that go to the "Project Settings / General" window, click on the ">>>" button, choose "Local Files" and select the file in the "Open" window.

6. I want to collect downloaded files on CD. When I copy the whole downloaded tree to the CD, the internal references still point to files on the hard disk. How would I create a project that can be stored on a CD-ROM lately? After a download WebCopier automatically updates all files references and makes them relative to the project directory. You also do it at any time by using "Project / Update Links" menu. That's why you can copy WebCopier project to any drive you wish. The only thing you need to remember is that you have to keep the project subdirectories structure.

A special "Copy Project" wizard has been created to simplify files archiving on Zip drives, CD-RWs and CD-ROMs.

Just specify a destination directory and the wizard will copy all project files for you.

You can access it from "File / Copy Project" menu.

7. Does WebCopier support "drag and drop"?

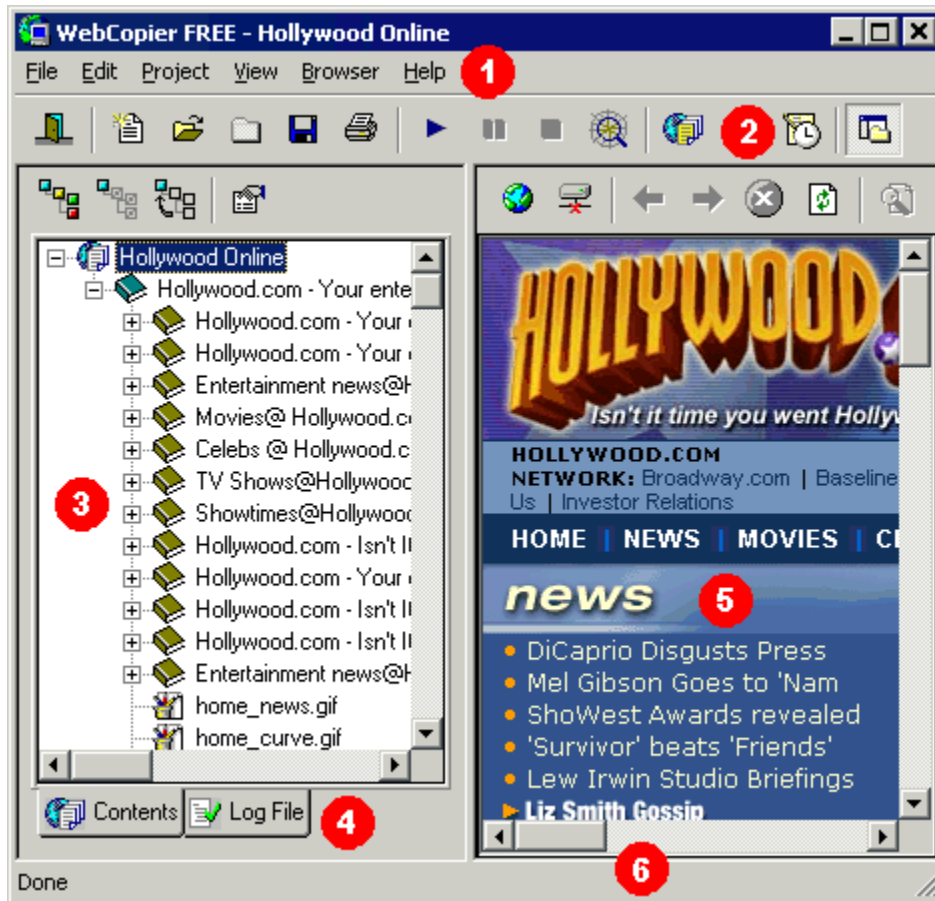
Yes, WebCopier accepts dropped files from the Windows Explorer.

If the file's extension is "wcp" the file will be opened as WebCopier project, if the extension is "wct" the file will be opened as WebCopier template, otherwise the file will be opened in WebCopier Integrated browser.

Also, you can use "drag and drop" to move nodes in the Contents Tree.

How to Use WebCopier

This is how WebCopier main window looks.



As you can see, it has six main components.

1. Main Menu.
Use Main menu to access most of WebCopier features and commands.
2. Toolbar.
The toolbar provides quick mouse access to many tools used in WebCopier.
3. Contents Tree.
It shows a graphical representation of a Web site.
4. Contents Tree / Log File Window tabs.
The tabs allow you to switch between Contents Tree and Log File Window. The Log File Window shows a download process summary.
5. Integrated browser.
The integrated browser allows you:
 - View downloaded files, even during the download.
 - Browse the Internet.

- Print entire Web site or only specific part of it.
6. Status bar.
The left area of the status bar describes actions of menu items as you use the arrow keys to navigate through menus. This area similarly shows messages that describe the actions of toolbar buttons as you depress them, before releasing them.


To use WebCopier is quite easy.

You just need to go through three general steps:

1. Create a new Project
2. Download the Project
3. View the results when download is finished



How to Create New Project

To create a new project:

- Choose File New menu or press  button on the Toolbar.
- A new project will be created and, by default, special wizard will be started. It will help you to go through the creation process.
- The wizard can be disabled in the Program Options dialog. In this case when you create a project the Project Settings dialog will be displayed. You need to set the projects settings in this dialog
- The project will be ready to work with after that.

How to Download Web site

To download a Web site you need:

- Start download by choosing Project / Start Download menu or pressing  button on the Toolbar.
- WebCopier may ask how to start the download.
- WebCopier will show the Download Info dialog that displays the information about the ongoing download.
- During the download you can use the Contents Tree to see what files have been downloaded.
- If any Error will happen during the download it can be viewed in the Log File Window. Use the Appendix to find the error description.
- You can use the Integrated browser to see the downloaded files or browse the Web.
- The program will stop download automatically when the web site will be downloaded or certain stopping criteria will be reached.
- You can stop manually by choosing Project / Stop Download menu, pressing  button on the Toolbar or the Stop button of the Download Info dialog.

How to View downloaded files

Once the files are downloaded, you can view them offline.

Double-click the left mouse button (or press Enter key) on the Contents Tree root node to start offline browsing.


You can use the Integrated browser or your default web browser to view the files.



- WebCopier requires Microsoft Internet Explorer 3.0 or higher to be installed on your computer, otherwise Integrated browser will be disabled.


How to Change Project Settings

To change the project settings:

- Choose Project Settings menu or press  button on the Toolbar.
- Use the Project Settings dialog to change the project data.


How to Set Program Options

To set the program options:

- Choose WebCopier Options menu or press  button on the Toolbar.
- Use the Program Options dialog to change the options.

How to Schedule Projects Download

To schedule projects download:

- Click on  Toolbar button or select Edit / Schedule menu to go to the Schedule window.
- In that window you need to select project(s) to download and set when you want download(s) to be done.



- To be able to use the scheduler WebCopier must be running and the Schedule window should be closed.
- If you want to run WebCopier automatically every time Windows starts, add the WebCopier shortcut to the Windows Startup menu.

How to Get Help

To get help:

- Check the Frequently Asked Questions section.
- Read online Help.
- Visit WebCopier web site.
The address is <http://www.maximumsoft.com>. You will find helpful information about current and future releases, tips how to use the program more efficiently, other users comments.
- If you still didn't find an answer to your question, please send e-mail message to WebCopier development team.
You can contact us anytime by sending a message to wcopier@maximumsoft.com.



- Please be aware that Technical support is **guaranteed** only for **registered** users.
- Support requests from users of FREE version are answered **only** if the issue is not covered in the **documentation** and **FAQ**, and the issue is **well described** (what is the problem, URL of the site) and is reproducible.

WebCopier Overview



- WebCopier is a [powerful offline browser](#) that records Web sites and stores them locally until you are ready to view them.
- It gives you [instant access](#) to critical Web sites at any time, regardless of where you are.
- This is ideal if you need to take Web pages, such as product literature and support information, on a business trip and have instant laptop access to them, [with or without an Internet connection](#).
- WebCopier can also be used to [duplicate](#) entire Web sites or [mirror](#) only specific directories.
- WebCopier performs [precise links searching](#), including JavaScript parsing, it can download up to 100 files simultaneously and print entire Web site or only specific part of it.
- Allows to [preview](#) website structure before you start the actual download.
- Provides support for [JavaScript](#) (.js), [Java Classes](#) (.class) and [Macromedia Flash](#) (.swf) files.
- The program [supports proxy servers](#), allows to specify user name and password to access secure Web sites.
- Uses [File](#) and [URL filters](#) to give user full control on which files could be loaded and which should be skipped.
- You can [view downloaded web sites](#) using any external browser, or by using WebCopier [Integrated browser](#) (MSIE 3.0 or higher must be present on your system to use this option).
- Downloaded files can be [easily relocated](#) because WebCopier stores all paths in relative form.
- The program is [very easy to use](#).
- Specially designed [Wizards](#) help user to go through processes of setting up the Internet connection and creation of a new project.
- You can [schedule](#) downloads or start them from [command line](#).
- Can [import](#) Internet Explorer Favorites and Netscape Bookmarks.
- You can use [Templates](#) to make new Project creation simple.
- WebCopier works in [Windows 95 / 98 / ME / NT 4.0 / 2000](#).

How it works

To [view a website offline](#) you just **need to provide its address** (URL).

WebCopier will **do the rest for you**:

- download starting website page
 - find all links (images, other site pages) the page includes
 - download these files
 - find all links next page has
 - download them
- and so on...

After files are downloaded **you can view** them in WebCopier [Integrated browser](#) or in your favorite web browser (Microsoft Internet Explorer, Netscape Navigator, Opera etc.).

Getting Started

After you have WebCopier installed, you need four simple steps to go through to enjoy offline browsing.

Step 1 – Specify your Internet Connection

For the very first time you run WebCopier, you should specify your Internet connection. The program has specially designed wizard to help you with that.

You have two Internet connection options to choose from:

- Local area network (LAN), or
- Modem (dial-up connection).

Choose the LAN option if you are connected to the Internet through a local area network (LAN) or by a cable modem. Next wizard window will ask about proxy server parameters. Enter the parameters or skip them, if you are not using proxy server.

Select the Modem (dial-up connection) option if you have an Internet service provider account and use your phone line and a modem to connect to it. In this case you also need to enter your dial-up settings, such as Connection, User ID and Password.

The first step is necessary only when you start WebCopier for the first time or your network configuration has been changed.

Steps 2-4 are necessary whenever you want to download a Web site for offline browsing.

Step 2 – Create a new Project

The Project defines all parameters that represent a downloading task.

They include:

- web site address (URL) you want to start the download from,
- directory, where the downloaded files will be saved,
- the download speed,
- how many files you want to download,
- the files types (HTML, Image, Audio, Video et.)
- and other parameters.

WebCopier has special wizard to help you with project creation.

Also you have a choice to do it by yourself by using Project Settings dialog.

Step 3 – Download

You can start the download by choosing Project / Start Download menu or pressing  button on the Toolbar.

WebCopier will show the Download Info dialog that displays the information about the ongoing download.

During the download you can use the Contents Tree to see what files have been downloaded

If any Error will happen during the download it can be viewed in the Log File Window. Use the Appendix A to find the error description.

The program will stop download automatically when the web site will be downloaded or certain stopping criteria will be reached.

You can stop manually by choosing Project / Stop Download menu, pressing  button on the Toolbar or the Stop button of the Download Info dialog.

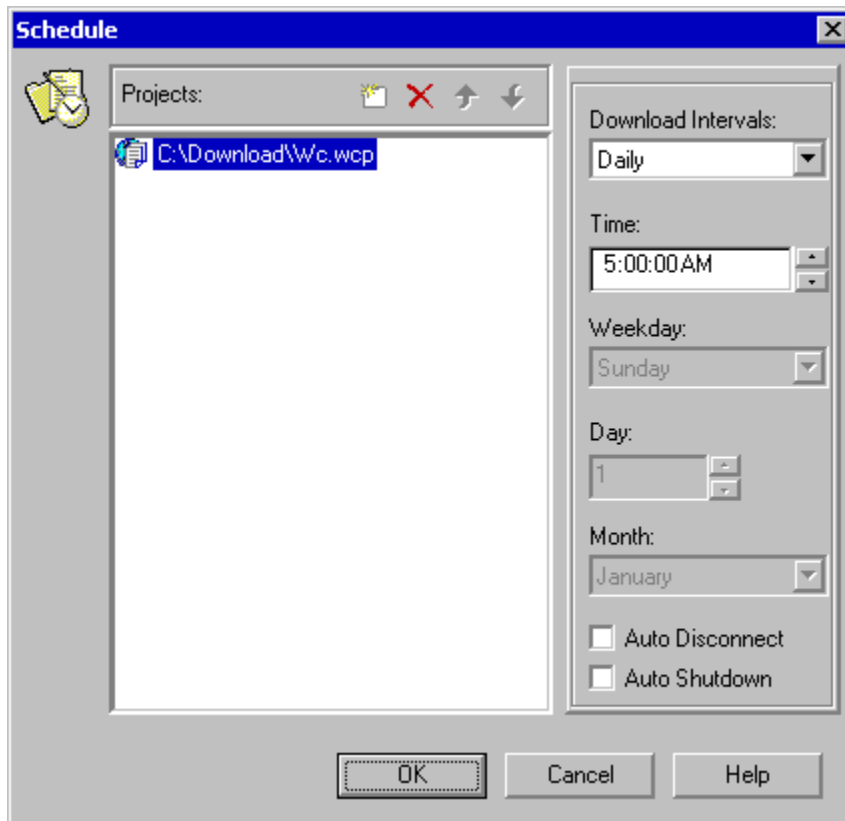
Step 4 – Browse downloaded files offline.

Once the files are downloaded, you can view them offline.

Double-click the left mouse button (or press Enter key) on the Contents Tree root node to start offline browsing.





You can use the Integrated browser or your default web browser to view the files.

Schedule Projects Download



This window allows you to set the projects download schedule.

To do that:

- Click on the **Insert New Project**  button and select a project you want to add to the schedule list.
- Set the project **Download Interval**
 - **Disabled** means no scheduling.
 - **Daily** start download every day at specified time.
 - **Weekly** start download once a week on the Weekday at the specified time.
 - **Monthly** and **Yearly** allow you to schedule your downloads at the same time every month or year.
 - **Every** means start the download at a specific time interval (every Hour : Minute). The countdown begins when the program starts or when you exit the Schedule window by pressing OK button.
 - **Following Previous** means that the project download will be started when the previous project in the list is downloaded.
- You can change a project position in the list by **drag and drop** or use the **Move Project Up**  and **Move Project Down**  buttons.
- To delete a project from the list press the **Remove Project**  button or set its **Download Interval** to

Disabled.

- Use **Auto Disconnect option to** disconnect from the Internet after the download is completed.
- **Auto Shutdown** – use this option to shutdown the computer and turn the power off, if the system supports the power-off feature, after the download is completed.



- If you need to download a group of several projects, include all of them in the schedule list, set desired **Download Interval** for the first project and choose **Following Previous** for all other.
- When the schedule needs to start a project download it will stop any ongoing download.

Download Info



This window gives you detailed information about the download process.

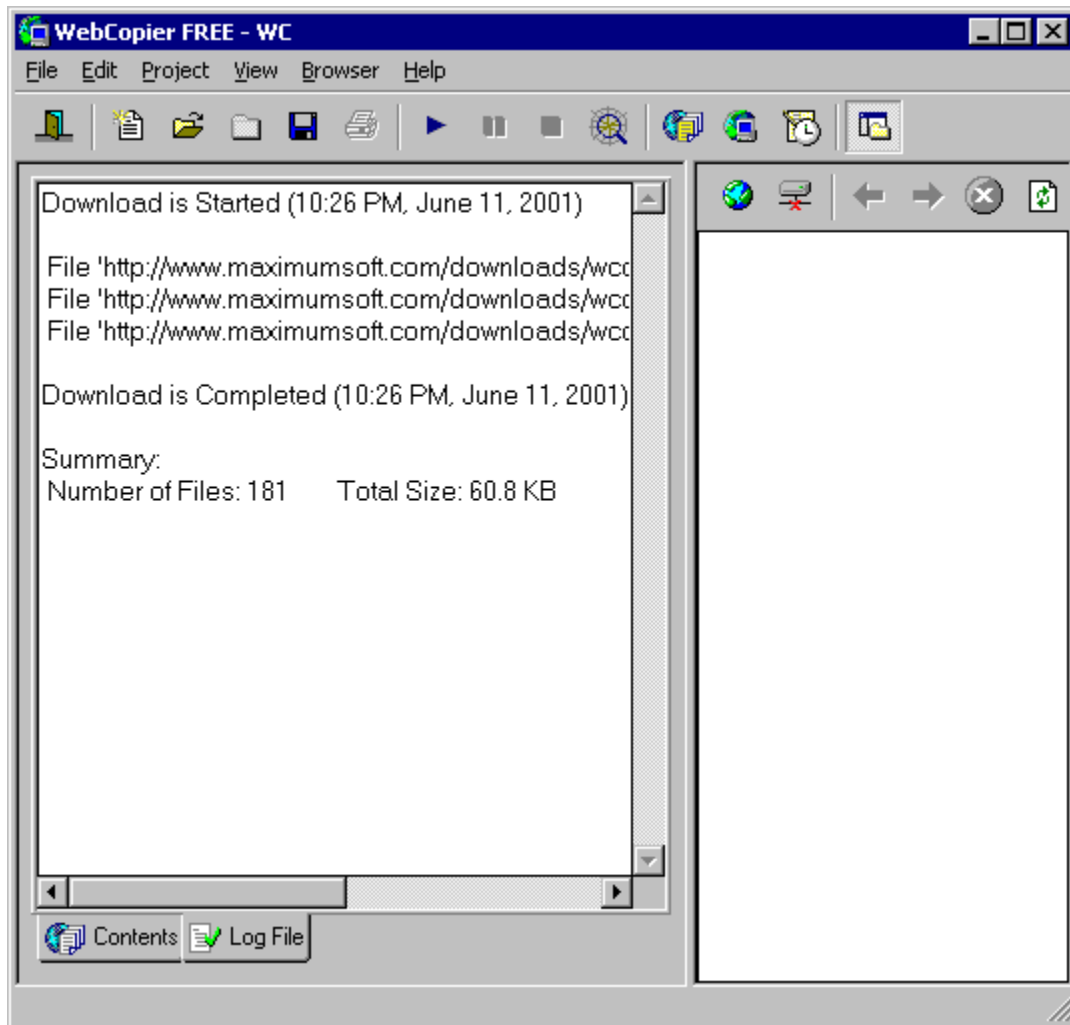
- **Download Status** –shows global download status (Started., Downloading., Completed., Stopping., Stopped) .
- Timer shows the time elapsed since the download was started.
- **File Name, Size, Status** –this list shows information about each file being downloaded or processed.
- **Slow ... Fast** – The speed throttle that allows to control the Internet connection bandwidth and CPU utilization.
- **Found** – shows total number of files (links) that have been found on the site.
- **Processed** – shows total number of files that have been processed (downloaded or checked for any changes).
- **Speed** - shows the speed of the download.
- **Total Size** - shows total size of all downloaded files.
- To Stop the download press the **Stop** button.
- To change the project settings, such as number of simultaneously downloaded files or download restrictions, click on the **Settings..** button.



- The **Processed / Found** ratio can give you an estimate how much is left to download. But remember, that more files you download, bigger **Found** number you see, because the program will discover more links.
- The **Processed** number may not reach the **Found** number, because not all files are going to be processed due to the Project Settings.

- The **Total Size** counts only files that have been downloaded during this session. If the file was not changed since the previous download, and the Update Files option is set to "When Changed", the file's download will be skipped and its size won't be included in the Total Size.
- Press right mouse button on top of the file and use the popup menu to see the file **position** in the Contents Tree, or **abort** its download. You can also double click on the file to see the file position.

Log File Window



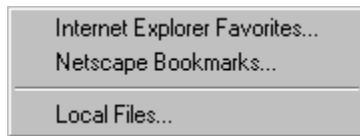
This window shows:

- When the download was started.
- All errors occurred during the download. Use the [Appendix A](#) to find the error description.
- The time when the download was completed or stopped.
- Short summary that includes total number of files being downloaded and their total size.



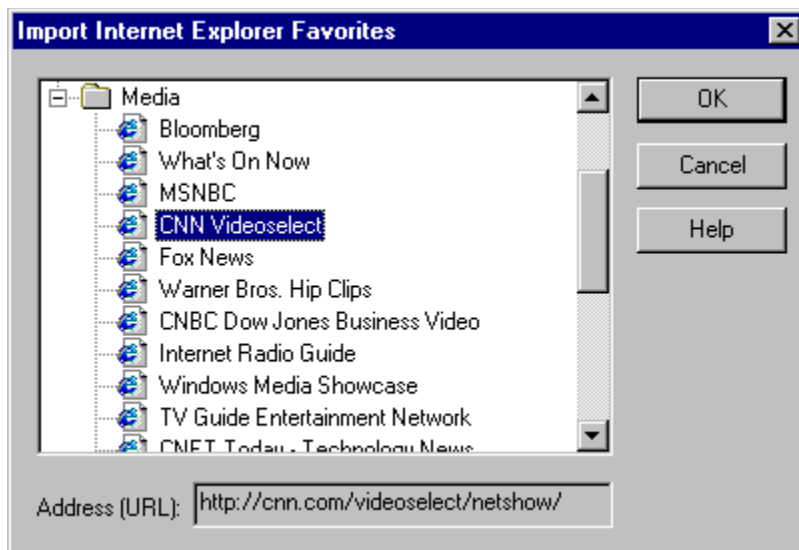
- The log file is a text file with the same file name as the project one and with extension **log**. It is located in the same directory as the project file.

Import Address(URL)



The program allows you to import the following URLs: Internet Explorer Favorites, Netscape Bookmarks, and Local Files.

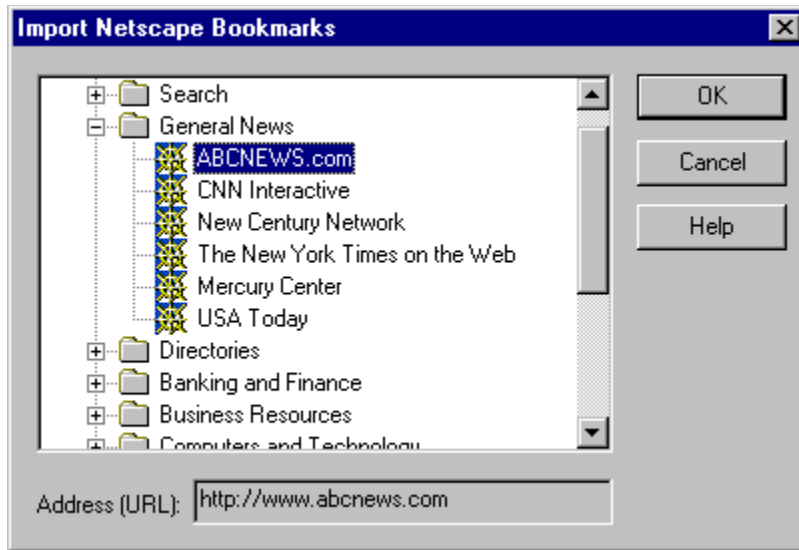
Internet Explorer Favorites



To import your favorite link:

- Find it by using the links tree
 - Click on it
 - Its address will be shown in the Address box
 - Press OK
-

Netscape Bookmarks



To import your favorite bookmark:

- Select the user profile you want to use, if you have several of them
- Find the bookmark by using the links tree
- Click on it
- Its address will be shown in the Address box
- Press OK

Local Files

WebCopier allows to specify a local HTML file as the starting web site address.

You may find it useful to:

- Create a HTML file with links to several web sites. It will allow to download all of them at once. Just make sure that the option "All Servers" is enabled in the Project Settings / Advanced / URL Filters window.
- Create the Contents Tree for the files you already had download. Later you can use the tree for easy navigation or to print the files.
- Scan you web site before it will be uploaded to your web server. WebCopier will check all links and will show a broken ones. Also the program will make all file names relative to the starting page.

Download Levels

Level value defines how deep WebCopier will search for HTML documents.

·**Level 0** means that WebCopier will load one page, referred by Address (URL) with all images, video, sounds, Java scripts, Java classes, etc. on the page.

·**Level 1** means that the program will load the first page and all pages linked to it with their images, etc.

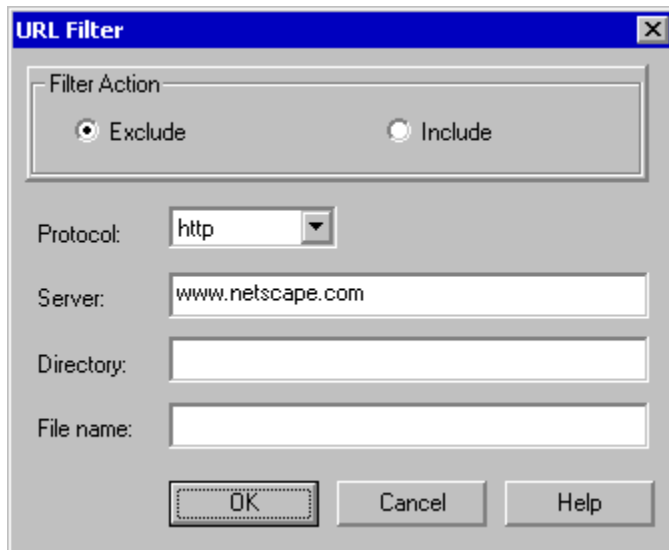
·**Level 2** - everything like in Level 1 and every page linked to downloaded ones.
And so on..

In other words, Level is the number of mouse clicks on Web links necessary to get from the starting page to the last desired.



- By default, Levels checking is disabled for the main web site and enabled for the Offsite links (only when you have specified to load files from **All Servers**, or if you have at least one URL filter with the action **Include** (URL Filters window).

URL Filter



URL Filters allow you easily shape Project downloads by setting which files could be loaded and which should be skipped.

Filter Action

- **Exclude** – exclude files from download if they match the URL settings.
- **Include** – include files into download if they match the URL settings.

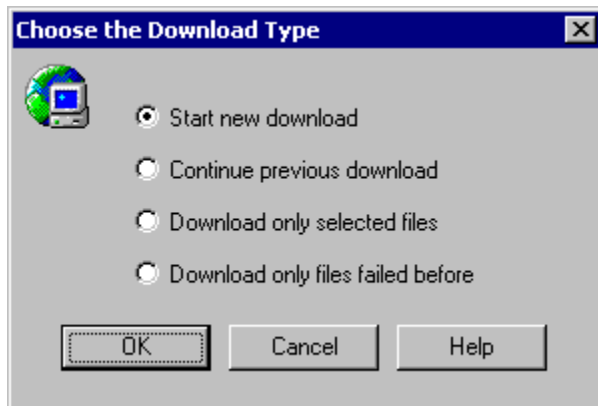
All URL Filters are divided into four sections:

- **Protocol** - restrict loading by protocol (**http**://www.server.com/dir/file.htm);
- **Server** - restrict loading by server name (http://**www.server.com**/dir/file.htm);
- **Directory** - restrict loading by path (http://www.server.com/**dir**/file.htm);
- **File** - restrict loading by filename (http://www.server.com/dir/**file.htm**).



- To create URL filter use the Project Settings / Advanced / URL Filters dialog or the Contents Tree .

Download Type



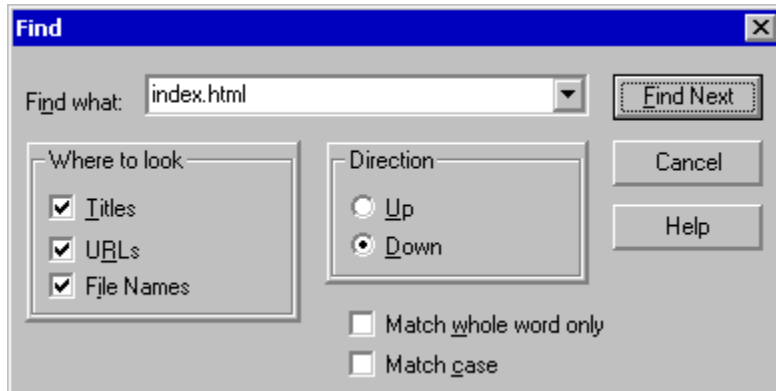
This dialog allows you to choose how to start the download and what should be downloaded.

- **Start new download** – WebCopier starts the download from the very beginning (from the Starting URL). Even in this case, the program decides for each file download it or not based on the Update Files settings.
- **Continue previous download** – WebCopier starts the download exactly from the place where it was stopped before.
It gives you the fastest way to resume stopped download.
- **Download selected files only** – WebCopier download only files that were selected in the Contents Tree . Use this option to download files that have been missed during previous downloads.
- **Download only files failed before** – WebCopier will download only files that could not been downloaded before due to some errors.
It gives you a chance try to download them again.



- The **Start new download** option is enabled every time and is set by default.
- The **Continue previous download** option is enabled if the program did download the project before and that download was stopped by user or because of certain restrictions
- The **Download selected files only** option is enabled if at least one file was selected for download in the Contents Tree .
- **Download only files failed before** option is enabled if at least one download error have previously occurred.
- This dialog is shown only when at least two options are enabled. Otherwise, WebCopier starts new download automatically.

Find



This window allows to search the Contents Tree, and therefore downloaded files, and find matches based on titles, URLs and file names.

- **Find what** – provides a space to specify the search text.
Type the text or use the drop-down list to select previous search strings.

Where to look

- **Titles** – search nodes titles to find match.
- **URLs** – search nodes URLs to find match.
- **File Names** - search nodes file names to find match.

0 Direction

- **Up** – indicates that the direction of the search will be from the current (selected) node to the beginning of the tree.
- **Down** – indicates that the direction of the search will be from the current (selected) node to the end of the tree.
- **Match whole word only** – find nodes that match search string and are preceded and followed by a space, tab, or punctuation character.
- **Match case** – searches for nodes that match the case of the characters in the Find What string exactly.



- The drop-down list includes previous search strings if the Remember Find strings option is enabled.

New Project Wizard

The wizard will guide you through the process of creation of a new project.

Please follow the screen instructions.

Connection Wizard

This wizard simplifies files archiving on Zip drives, CD-RWs and CD-ROMs.

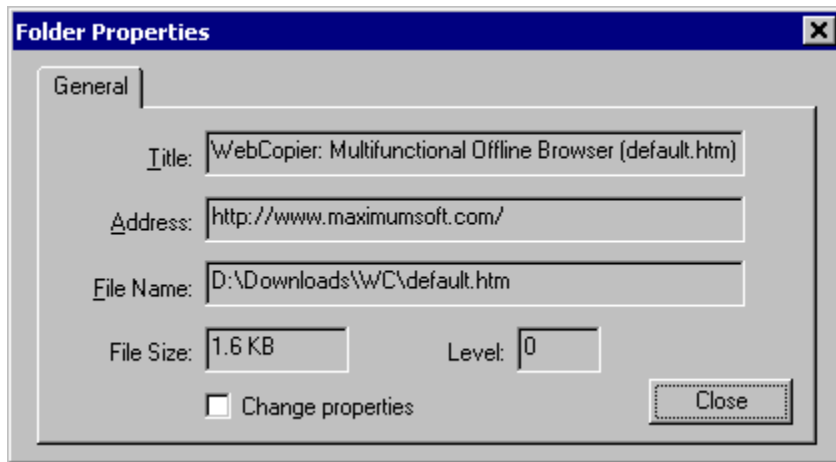
Please follow the screen instructions.

Copy Project Wizard

This wizard simplifies files archiving on Zip drives, CD-RWs and CD-ROMs.

Please follow the screen instructions.

Folder / Link Properties



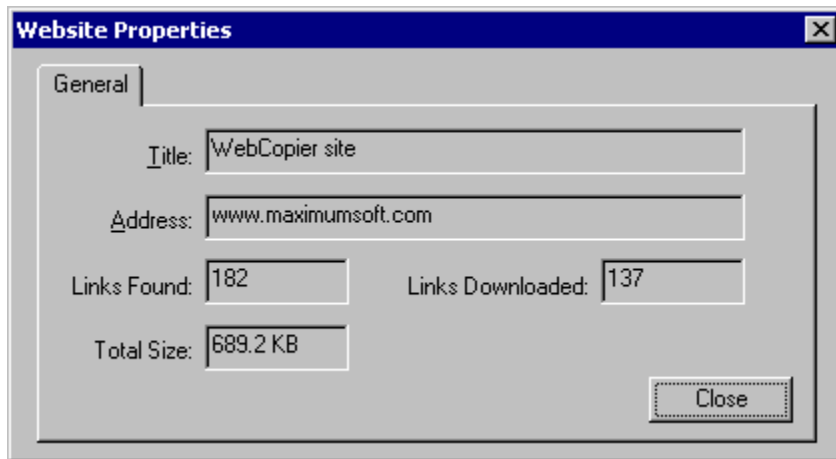
This window shows the properties of the Contents Tree node, which represent a file. If the file belongs to HTML files group, its node is called **Folder**, otherwise it's called **Link**.

- **Title** – shows the tree node title.
- **Address** – the URL of the file.
- **File Name** – the name of the file on your disk, if the file has been downloaded. The field will be empty, if the file has not been downloaded.
- **File Size** – The file size.
- **Level** – The file [level](#).
- **Change properties** – check the button to be able to change the properties.



- If the file belongs to HTML file group, the **File Size** field shows the size of the file on web server. The copy of the file on your disk may have slightly different size, if the file links have been updated for offline browsing.
- You may want to changed the properties to affect next download.

Website Properties



This window shows the properties of the whole Contents Tree, that represents the website structure.

- **Title** – shows the Project Title parameter.
- **Address** – the Address (URL) of the web Site parameter.
- **Links Found** – total number of files (links) found on this site.
- **Links Downloaded** – number of files downloaded from the website.
- **Total Size** – The total size of all downloaded files.



- The **Total Size** value may be slightly different then the actual size of all downloaded files on your disk. The reason – HTML files size is equal to their size on the web server, which may differ from their size on your disk, if the files have been updated for offline viewing.

WebCopier Help Index



About WebCopier

[WebCopier Overview](#)

[How it works](#)

[Getting Started](#)

How To ...

[Use WebCopier](#)

[Create New Project](#)

[Download Web site](#)

[View downloaded files](#)

[Change Project Settings](#)

[Set Program Options](#)

[Schedule Projects Download](#)

[Get Help](#)

[Register Program](#)

Advanced Features ...

[Using Contents Tree](#)

[Using integrated browser](#)

[File Filters](#)

[URL Filters](#)

[Command line parameters](#)

[How website preview works](#)

[Using Templates](#)

[Tips and Tricks](#)

Frequently Asked Questions

[FAQ](#)

Menu Commands

[File menu](#)

[Edit menu](#)

[Project menu](#)

[View menu](#)

[Browser menu](#)

[Help menu](#)

Appendixes

Appendix A - [Error Codes](#)

Appendix B - [Template Reference](#)

Menu Commands

Menu Commands

File menu

Edit menu

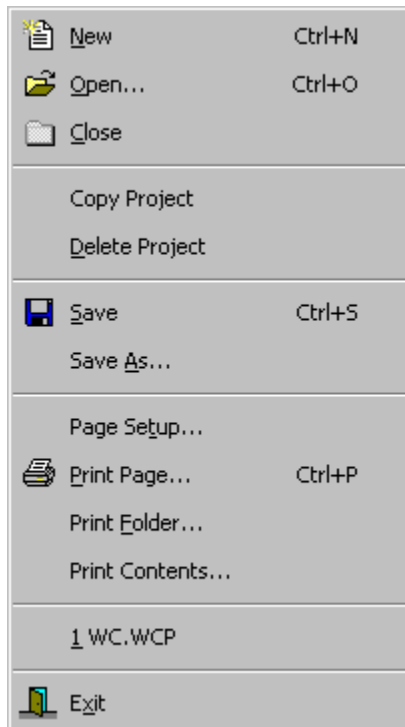
Project menu

View menu

Browser menu

Help menu

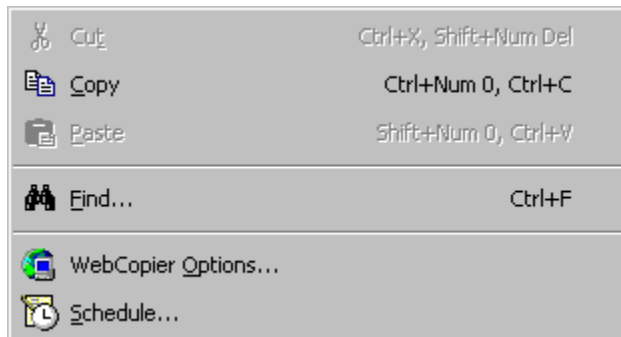
File menu commands



The File menu offers the following commands:

<u>N</u> <u>e</u> <u>w</u>	Creates a new project.
<u>O</u> <u>p</u> <u>e</u> <u>n</u>	Opens an existing project.
<u>C</u> <u>l</u> <u>o</u> <u>s</u> <u>e</u>	Closes the opened project.
<u>C</u> <u>o</u> <u>p</u> <u>y</u> <u>P</u> <u>r</u> <u>o</u> <u>j</u> <u>e</u> <u>c</u> <u>t</u>	Copies the project
<u>D</u> <u>e</u> <u>l</u> <u>e</u> <u>t</u> <u>e</u> <u>P</u> <u>r</u> <u>o</u> <u>j</u> <u>e</u> <u>c</u> <u>t</u>	Deletes the project.
<u>S</u> <u>a</u> <u>v</u> <u>e</u>	Saves the opened project using the same file name.
<u>S</u> <u>a</u> <u>v</u> <u>e</u> <u>A</u> <u>s</u>	Saves the opened project to a specified file name.
<u>P</u> <u>a</u> <u>g</u> <u>e</u> <u>S</u> <u>e</u> <u>t</u> <u>u</u> <u>p</u>	Selects a printer options.
<u>P</u> <u>r</u> <u>i</u> <u>n</u> <u>t</u> <u>P</u> <u>a</u> <u>g</u> <u>e</u>	Prints the active page.
<u>P</u> <u>r</u> <u>i</u> <u>n</u> <u>t</u> <u>F</u> <u>o</u> <u>l</u> <u>d</u> <u>e</u> <u>r</u>	Prints the active folder.
<u>P</u> <u>r</u> <u>i</u> <u>n</u> <u>t</u> <u>C</u> <u>o</u> <u>n</u> <u>t</u> <u>e</u> <u>n</u> <u>t</u> <u>s</u>	Prints the Contents tree.
<u>R</u> <u>e</u> <u>c</u> <u>e</u> <u>n</u> <u>t</u> <u>P</u> <u>r</u> <u>o</u> <u>j</u> <u>e</u> <u>c</u> <u>t</u> <u>s</u> (<u>1</u> , <u>2</u> , <u>3</u> , <u>4</u>)	Shows a list of last four projects
<u>E</u> <u>x</u> <u>i</u> <u>t</u>	Exits WebCopier.

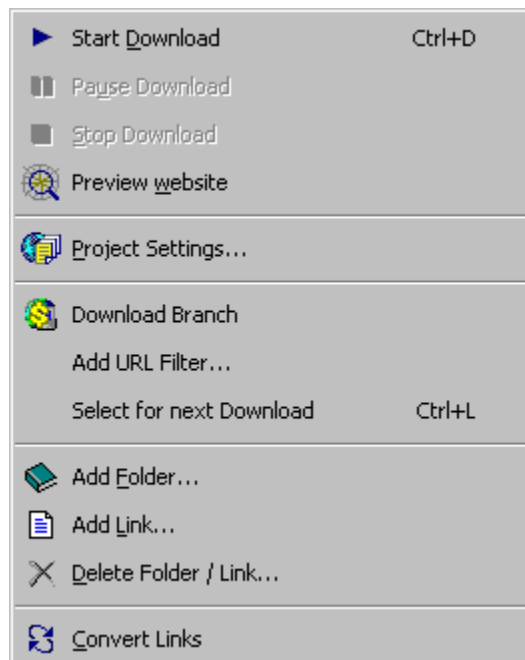
Edit menu commands



The Edit menu offers the following commands:

<u>C</u> ut	Deletes text and moves it to the clipboard.
<u>C</u> opy	Copies text to the clipboard.
<u>P</u> aste	Pastes text from the clipboard into the project.
<u>F</u> ind	Allows to search the Contents.
<u>W</u> ebCopier <u>O</u> ptions...	Shows the program Options dialog.
<u>S</u> chedule	Shows the download Schedule.

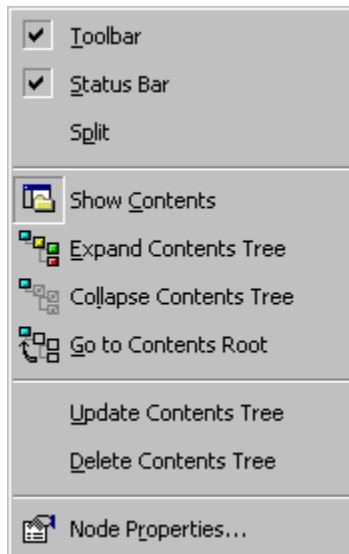
Project menu commands



The Project menu offers the following commands:

<u>Start Download</u>	Start download.
<u>Pause Download</u>	Pause download.
<u>Stop Download</u>	Stop download.
<u>Preview website</u>	Get the site Contents tree before the download starts.
<u>Project Settings</u>	Changes a project settings.
<u>Download Branch</u>	Downloads only files that belong to the selected tree branch.
<u>Add URL Filter</u>	Creates a <u>URL filter</u> based on selected node properties.
<u>Select for next Download</u>	Includes selected node into next download.
<u>Add Folder</u>	Adds a folder
<u>Add Link</u>	Adds a link
<u>Delete</u>	Deletes folder or a link
<u>Convert Links</u>	Convert all project links to make them relative to the project directory, make them ready for offline browsing.









View menu commands




The View menu offers the following commands:

<u>T</u> oolbar	Shows or hides the toolbar.
<u>S</u> tatus Bar	Shows or hides the status bar.
<u>S</u> plit	Split the program window into panes
<u>S</u> how Contents	Shows or Hides the Contents Tree
<u>E</u> xpand Contents Tree	Expands all nodes of the Contents Tree
<u>C</u> ollapse Contents Tree	Collapses the Contents Tree
<u>G</u> o to Contents Root	Jumps to the root of the Contents Tree.
<u>U</u> ppdate Contents Tree	Rebuilds the Contents Tree
<u>D</u> elete Contents Tree	Deletes the Contents Tree.
<u>N</u> ode Properties	Shows properties of a node of the Contents Tree.

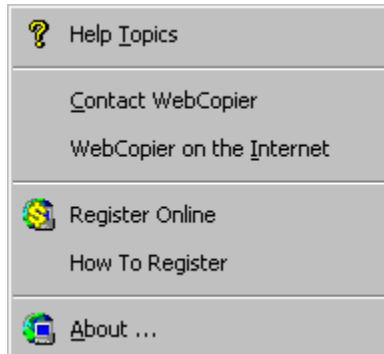
Browser menu commands

	<u>G</u> o To	Ctrl+G
	Go <u>B</u> ack	Alt+Num 4
	Go <u>F</u> orward	Alt+Num 6
	<u>S</u> top Browsing	
	<u>R</u> efresh View	Alt+Ctrl+R
	Font Size	Alt+Ctrl+Z
	Show Download Report	
	Find in Contents	
	Work Offline	

The Browser menu offers the following commands:

<u>G</u> o To	Go To
<u>G</u> o Back	Go Back
<u>G</u> o Forward	Go Forward
<u>S</u> top Browsing	Stop Browsing
<u>R</u> efresh View	Refresh the Integrated browser page
<u>F</u> ont Size	Change the Integrated browser font size
 <u>S</u> how Download Report	Show the download report
<u>F</u> ind in Contents	Show the Contents tree position of the file loaded in the Integrated browser
<u>W</u> ork Offline	Put the Integrated browser into Offline mode

Help menu commands



The Help menu offers the following commands, which provide you assistance with this application:

<u>Help Topics</u>	Offers you an index to topics on which you can get help
<u>Contact WebCopier</u>	Allows you to send e-mail message to the WebCopier development team
<u>WebCopier on the Internet</u>	Shows WebCopier web site
<u>Register Online</u>	Allows to Register the program online.
<u>How To Register</u>	Displays the instructions about the registration process.
<u>About</u>	Displays the version number of this application.

New command (File menu)

Use this command to create a new project in WebCopier.

Specially designed wizard will guide you through the process of creation of a new project.
Later on, you can use the Project Settings dialog to change the project data.

You can open an existing project with the Open command.

Shortcuts

Toolbar:



Keys: CTRL+N

Open command (File menu)

Use this command to open an existing project or template.

After the project is opened go to the Project Settings dialog if you need to change the project data.

You can create new project with the New command.

Shortcuts

Toolbar:



Keys: CTRL+O

File Open dialog box

The following options allow you to specify which file to open:

File Name

Type or select the filename you want to open. This box lists files with the extension you select in the List Files of Type box.

List Files of Type

Select the type of file you want to open:
WebCopier Project or Template.

Drives

Select the drive in which WebCopier stores the file that you want to open.

Directories

Select the directory in which WebCopier stores the file that you want to open.

Network...

Choose this button to connect to a network location, assigning it a new drive letter.

Close command (File menu)

Use this command to close the active project. If you close a project without saving, the program will show prompt message. Before closing an untitled project, WebCopier displays the Save As dialog box and suggests that you name and save the project.

Shortcuts

Toolbar:



Copy Project command (File menu)

Use this command to copy the active project.

Specially designed wizard simplifies files archiving on Zip drives, CD-RWs and CD-ROMs. Just specify a destination directory and the wizard will copy all project files for you.

Delete Project command (File menu)

Use this command to delete the active project. The program will also let you to delete all project downloaded files.

Save command (File menu)

Use this command to save the active project to its current name and directory. When you save a project for the first time, WebCopier displays the Save As dialog box so you can name your project. If you want to change the name and directory of an existing project before you save it, choose the Save As command.

Shortcuts

Toolbar:



Keys: CTRL+S

Save As command (File menu)

Use this command to save and name the active project. WebCopier displays the Save As dialog box so you can name your project.

You also have a choice to save the project data as a Template.

To save a project with its existing name and directory, use the Save command.

File Save As dialog box

The following options allow you to specify the name and location of the file you're about to save:

File Name

Type a new filename to save a document with a different name. WebCopier adds the extension you specify in the Save File As Type box.

Drives

Select the drive in which you want to store the document.

Directories

Select the directory in which you want to store the document.

Save as Type

Select the type of file you want to save:
WebCopier Project or Template.

Network...

Choose this button to connect to a network location, assigning it a new drive letter.

Recent Projects (1, 2, 3, 4) command (File menu)

Use the numbers and filenames listed at the bottom of the File menu to open the last four projects you closed. Choose the number that corresponds with the project you want to open.

Exit command (File menu)

Use this command to end your WebCopier session. You can also use the Close command on the application Control menu. WebCopier prompts you to save project with unsaved changes.

Shortcuts

Toolbar:



Mouse: Double-click the application's Control menu button.



Keys: ALT+F4

Cut command (Edit menu)

Use this command to remove the currently selected text and put it on the clipboard. This command is unavailable if there is no text currently selected.

Cutting text to the clipboard replaces the contents previously stored there.

Shortcuts

Keys: CTRL+X

Copy command (Edit menu)

Use this command to copy selected text onto the clipboard. This command is unavailable if there is no text currently selected.

Copying text to the clipboard replaces the contents previously stored there.

Shortcuts

Keys: CTRL+C

Paste command (Edit menu)

Use this command to insert a copy of the clipboard contents at the insertion point. This command is unavailable if the clipboard is empty.

Shortcuts

Keys: CTRL+V

Find command (Edit menu)

Use this command to search the Contents Tree .

You can do it in the Find dialog.

WebCopier Options command (Edit menu)

Use this command to change program options.

You can do it in the Program Options dialog.

Shortcuts

Toolbar:



Schedule command (Edit menu)

Use this command to change projects download schedule.

You can do it in the Schedule dialog.

Shortcuts

Toolbar:



Start Download command (Project menu)

Use this command to start download.

WebCopier will show the Download Info dialog that displays the information about the ongoing download.

Shortcuts

Toolbar:



Pause Download command (Project menu)

Use this command to pause download. The program first will finish copying of the files it's downloading at this moment, and then will pause the download and wait for you to resume or stop it.

Shortcuts

Toolbar:



Stop Download command (Project menu)

Use this command to stop download.

Shortcuts

Toolbar:



Preview website command (Project menu)

Use this command to see the website structure (Contents Tree) before you start the actual download.

Shortcuts

Toolbar:



Project Settings command (Project menu)

Use this command to change project settings.

You can do it in the Project Settings dialog.

Shortcuts

Toolbar:



Download Branch command (Project menu)

Use this command to download only files that belong to the selected Contents Tree branch.

Add URL Filter command (Project menu)

Use this command to create a URL filter based on selected node properties.

Select for next download command (Project menu)

Use this command to include selected node into next download.

Add Folder command (Project menu)

Use this command to add a folder (HTML file) to the Contents Tree.
To add a link (any file, except HTML) use Add Link command.

Add Link command (Project menu)

Use this command to add a link (any file, except HTML) to the Contents Tree.
To add a folder (HTML file) use Add Folder command.

Delete command (Project menu)

Use this command to delete the Contents Tree node (file). The command does not delete the file itself.

Convert Links command (Project menu)

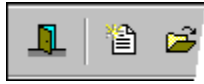
Use this command to force the program to convert all project links to make them relative to the project directory. The update can be done by WebCopier at the end of each download automatically, if the Links Conversion option is set.

Toolbar command (View menu)

Use this command to display and hide the Toolbar, which includes buttons for some of the most common commands in WebCopier, such as File Open. A check mark appears next to the menu item when the Toolbar is displayed.

See Toolbar for help on using the toolbar.

Toolbar



The toolbar is displayed across the top of the application window, below the menu bar. The toolbar provides quick mouse access to many tools used in WebCopier,

To hide or display the Toolbar, choose Toolbar from the View menu (ALT, V, T).

Click	To
-------	----



Exit WebCopier.



Create a new project.



Open an existing project. WebCopier displays the Open dialog box, in which you can locate and open the desired file.



Close the opened project.



Save the active project with its current name. If you have not named the project, WebCopier displays the Save As dialog box.



Print the active page.



Change the project settings.



Change the program options.



Set the download schedule.



Start download.



Pause download.



Stop download.



Show or Hide the Contents Tree.



Expand all nodes of the Contents Tree.



Collapse the Contents Tree.



Jump to the root of the Contents Tree.



To view a Web site in the Integrated browser.



Put the Integrated browser into Offline mode



To return to a page you've already seen.



To go forward to the next page.



To stop a web page load if it is taking too long.



To force the Integrated browser to reload the page.



Shows the download report.

Status Bar command (View menu)

Use this command to display and hide the Status Bar, which describes the action to be executed by the selected menu item or depressed toolbar button. A check mark appears next to the menu item when the Status Bar is displayed.

See Status Bar for help on using the status bar.

Status Bar



The status bar is displayed at the bottom of the WebCopier window. To display or hide the status bar, use the Status Bar command in the View menu.

The left area of the status bar describes actions of menu items as you use the arrow keys to navigate through menus. This area similarly shows messages that describe the actions of toolbar buttons as you depress them, before releasing them. If after viewing the description of the toolbar button command you wish not to execute the command, then release the mouse button while the pointer is off the toolbar button.

Split command (View menu)

Use this command to split the active window into panes. You may then use the mouse or the keyboard arrows to move the splitter bars. When you are finished, press the mouse button or enter to leave the splitter bars in their new location. Pressing escape keeps the splitter bars in their original location.

Show Contents command (View menu)

Use this command to Show or Hide Contents Tree pane.

Shortcuts

Toolbar:



Expand ContentsTree command (View menu)

Use this command to Expand all nodes of the Contents Tree.

Shortcuts

Toolbar:



Collapse Contents Tree command (View menu)

Use this command to Collapse the Contents Tree.

Shortcuts

Toolbar:



Go to Contents Root command (View menu)

Use this command to jump to the root of the Contents Tree.

Shortcuts

Toolbar:



Update Contents Tree command (View menu)

Use this command to rebuild the Contents Tree.

Delete Contents Tree command (View menu)

Use this command to delete the Contents Tree.

Node Properties command (View menu)

Use this command to show properties of a node of the Contents Tree.

Go To command (Browser menu)

Use this command to specify an address (URL) of the Web site you want to see in the Integrated browser.

Shortcuts

Toolbar:



Go Back command (Browser menu)

Use this command to return to a Web page you've already seen.

Shortcuts

Toolbar:



Go Forward command (Browser menu)

Use this command to go forward to the next page (provided you have viewed it just previously).

Shortcuts

Toolbar:



Stop Browsing command (Browser menu)

Use this command to stop a web page load if it is taking too long.

Shortcuts

Toolbar:



Refresh View command (Browser menu)

Use this command to force the Integrated browser to reload the page.

Shortcuts

Toolbar:



Font Size command (Browser menu)

Use this command to change the font size of the Integrated browser.

Work Offline command (Browser menu)

Use this command to put the Integrated browser into Offline mode. It may be useful if you want to prevent the browser from downloading files from the Internet (for example, advertisement banners) when you browse downloaded files.

Shortcuts

Toolbar:



Show Download Report command (Browser menu)

Use this command to view download report. New report is generated every time you start a download, if the Generate Download Report option is set.



- The **Show Download Report** command is a Premium Option and is available only in the **Registered** version of WebCopier.

Shortcuts

Toolbar:



Find in Contents command (Browser menu)

Use this command to Show the Contents Tree position of the file loaded in the Integrated browser.

Help Topics command (Help menu)

Use this command to display the opening screen of Help. From the opening screen, you can jump to step-by-step instructions for using WebCopier and various types of reference information.

Once you open Help, you can click the Contents button whenever you want to return to the opening screen.

Using Help command (Help menu)

Use this command for instructions about using Help.

About command (Help menu)

Use this command to display the copyright notice and version number of your copy of WebCopier.

Context Help command



Use the Context Help command to obtain help on some portion of WebCopier. When you choose the Toolbar's Context Help button, the mouse pointer will change to an arrow and question mark. Then click somewhere in the WebCopier window, such as another Toolbar button. The Help topic will be shown for the item you clicked.

Shortcut

Keys: SHIFT+F1

Contact WebCopier command (Help menu)

Use this command to send e-mail message to WebCopier development team.

It will start your default e-mail program.

You can contact us anytime sending message to wcopier@maximumsoft.com.

WebCopier on the Internet command (Help menu)

Use this command to visit WebCopier web site.

The address is <http://www.maximumsoft.com>.

You will find helpful information about current and future release, tips how to use the program more efficiently, other users comments.

Register Online command (Help menu)

Use this command to register WebCopier online.

How To Register command (Help menu)

REGISTER TODAY AND ENJOY THE FOLLOWING BENEFITS:

- **Premium Features**
- **Free upgrades for 12 months**
- **Priority technical support**

Registration fee is **\$24.95**.

To register, please

- go to www.maximumsoft.com
- open Register section
- follow the instructions to register online or by phone / fax / mail.

WebCopier

The title bar is located along the top of a window. It contains the name of the application and document.

To move the window, drag the title bar. Note: You can also move dialog boxes by dragging their title bars.

A title bar may contain the following elements:

- Application Control-menu button
- Document Control-menu button
- Maximize button
- Minimize button
- Name of the application
- Name of the document
- Restore button

Scroll bars

Displayed at the right and bottom edges of the document window. The scroll boxes inside the scroll bars indicate your vertical and horizontal location in the document. You can use the mouse to scroll to other parts of the document.

<< Describe the actions of the various parts of the scrollbar, according to how they behave in your application. >>

Size command (System menu)

Use this command to display a four-headed arrow so you can size the active window with the arrow keys.



After the pointer changes to the four-headed arrow:

1. Press one of the DIRECTION keys (left, right, up, or down arrow key) to move the pointer to the border you want to move.
2. Press a DIRECTION key to move the border.
3. Press ENTER when the window is the size you want.

Note: This command is unavailable if you maximize the window.

Shortcut

Mouse: Drag the size bars at the corners or edges of the window.

Move command (Control menu)

Use this command to display a four-headed arrow so you can move the active window or dialog box with the arrow keys.



Note: This command is unavailable if you maximize the window.


Shortcut

Keys: CTRL+F7

Minimize command (application Control menu)

Use this command to reduce the WebCopier window to an icon.


Shortcut

Mouse: Click the minimize icon  on the title bar.
Keys: ALT+F9

Maximize command (System menu)

Use this command to enlarge the active window to fill the available space.

Shortcut

Mouse: Click the maximize icon  on the title bar; or double-click the title bar.

Keys: CTRL+F10 enlarges a document window.

Next Window command (document Control menu)

Use this command to switch to the next open document window. WebCopier determines which window is next according to the order in which you opened the windows.

Shortcut

Keys: CTRL+F6

Previous Window command (document Control menu)

Use this command to switch to the previous open document window. WebCopier determines which window is previous according to the order in which you opened the windows.

Shortcut

Keys: SHIFT+CTRL+F6

Close command (Control menus)

Use this command to close the active window or dialog box.

Double-clicking a Control-menu box is the same as choosing the Close command.



Note: If you have multiple windows open for a single document, the Close command on the document Control menu closes only one window at a time. You can close all windows at once with the Close command on the File menu.

Shortcuts

Keys:	CTRL+F4 closes a document window
	ALT+F4 closes the <<YourType>> window or dialog box

Restore command (Control menu)

Use this command to return the active window to its size and position before you chose the Maximize or Minimize command.

Switch to command (application Control menu)

Use this command to display a list of all open applications. Use this "Task List" to switch to or close an application on the list.

Shortcut

Keys: CTRL+ESC

Dialog Box Options

When you choose the Switch To command, you will be presented with a dialog box with the following options:

Task List

Select the application you want to switch to or close.

Switch To

Makes the selected application active.

End Task

Closes the selected application.

Cancel

Closes the Task List box.

Cascade

Arranges open applications so they overlap and you can see each title bar. This option does not affect applications reduced to icons.

Tile

Arranges open applications into windows that do not overlap. This option does not affect applications reduced to icons.

Arrange Icons

Arranges the icons of all minimized applications across the bottom of the screen.

Ruler command (View menu)

<< Write application-specific help here. >>

Choose Font dialog box

This dialog allows you to change the font parameters.

Choose Color dialog box

<< Write application-specific help here. >>

Replace command (Edit menu)

<< Write application-specific help here. >>

Replace dialog box

<< Write application-specific help here. >>

Repeat command (Edit menu)

Use this command to repeat the last editing command carried out. The Repeat menu item changes to Can't Repeat if you cannot repeat your last action.

Shortcut

Key: F4

Clear command (Edit menu)

<< Write application-specific help here. >>

Clear All command (Edit menu)

<< Write application-specific help here. >>

Next Pane

<< Write application-specific help here. >>

Prev Pane

<< Write application-specific help here. >>

Modifying the Document

<< Write application-specific help here that provides an overview of how the user should modify a document using your application.>>

No Help Available

No help is available for this area of the window.

No Help Available

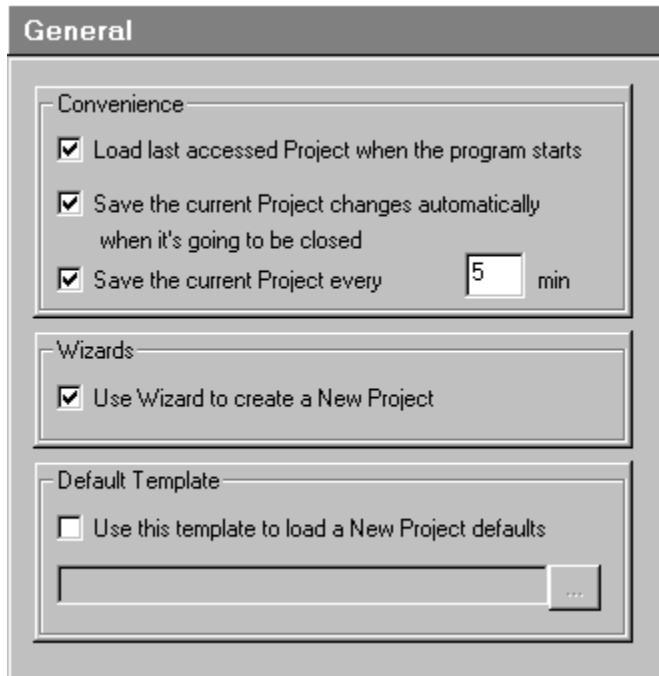
No help is available for this message box.

WebCopier Options

This dialog allows you to change the program options.

They are divided in four groups: General, Connection, Language and Advanced.

General options



Convenience

- **Load..** - automatically load last accessed project when the program starts.
- **Save the current project changes...** - check this option to let the program automatically save current project settings, if they have been changed, when the project is going to be closed. A project settings can be changed in the Project Settings dialog, by editing the Contents Tree or as a result of a download.
- **Save the current Project every N min** – allows the program to save the project file periodically. It could be useful during long downloads. The project file among the Project Settings also contains the Contents Tree data. With AutoSave option on, whenever unexpected thing may happen during a download, you will be able to recover the downloaded information easily.

Wizards

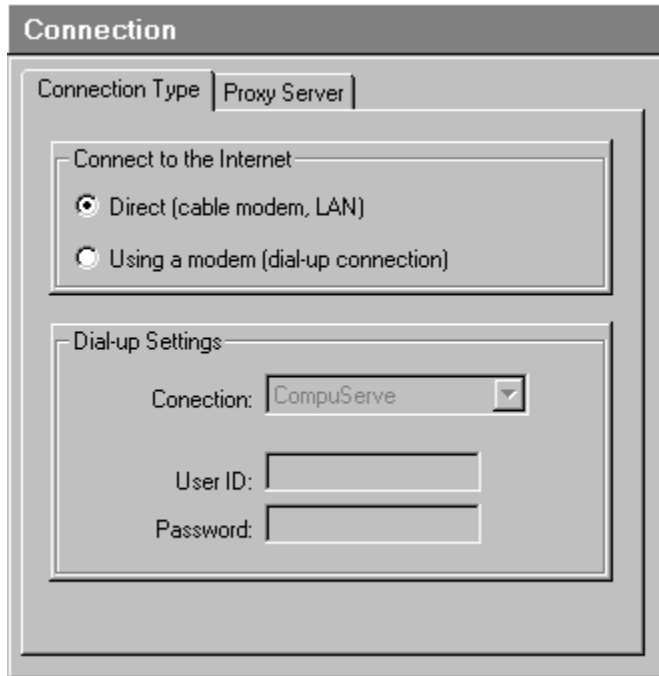
- **Use Wizard to create a New project** – the wizard helps a user to set up a new project by guiding him through the process step by step.

Default Template

- **Use this template...** – check this option if you want to apply your own default settings, previously saved in a template file, to each new project. You can type the full name of the template file or press the "...” button to

select it.

Connection / Connection Type options



Connect to the Internet

- **Direct (cable modem, LAN)** – choose this option if you are connected to the Internet through a local area network (LAN) or by a cable modem.
- **Using a modem (dial-up connection)** – select this option if you have an Internet service provider account and use your phone line and a modem to connect to it. In this case you also need to enter your dial-up settings, such as Connection, User ID and Password.

Dial-up Settings

- **Connection** – select a Dial-Up Networking connection from the list.
- **User ID** – type the account name assigned to you by your service provider.
- **Password** – type the password assigned to you by your service provider.



- The option **Using a modem (dial-up connection)** is available when you are using Windows 95 (with IE 4.0 and higher), Windows 98, Windows NT 4.0 (SP3 and higher) or Windows 2000.

Connection / Proxy Server options

Connection

Connection Type Proxy Server

Proxy Server

☐ Access the Internet using a Proxy server

Type: Address of proxy server: Port:

HTTP

FTP

Authentication (if needed)

User ID:

Password:

Proxy Server

- **Access the Internet using a Proxy server** – check this option if you are connected to the Internet through a proxy server.
A proxy server allows several people to share the same Internet connection. Also it can act as a security barrier between your internal network and the Internet, keeping other people on the Internet from gaining access to confidential information on your internal network or your computer.
- **Address** – the proxy server address (server name or its IP address) for HTTP and FTP protocols.
- **Port** - the proxy server port number, usually 80 for HTTP and 21 for FTP.
- **Authentication** – User ID and Password of the proxy server user account.
Leave the fields blank if the proxy server does not require the authentication.

Language options



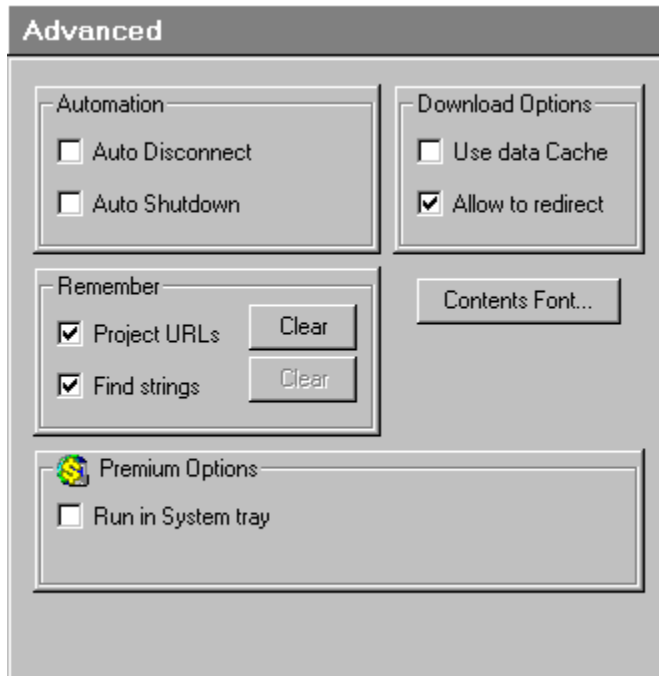
Choose the Language

Select the language you want to use from the list.

If you cannot find the language you need:

- Go to WebCopier web site and download your language translation file, if it is available.
- Copy it to your WebCopier directory, for example, "C:\\Program Files\\WebCopier".
- Open this window again and select the language.

Advanced options



Automation

- **Auto Disconnect..** – WebCopier will disconnect you from the Internet after the project download is completed. The program will give you 5 seconds to cancel the action. This option works only if you selected a dial-up connection to the Internet in the Connection Type window.
- **Auto Shutdown..** – WebCopier will shut down your computer and turn off the power, if the system supports the power-off feature.

Download Options

- **Use data Cache** – check this option to use local cache on your disk.
- **Allow to redirect requests** – gives a web server permission to redirect you to a different server.

Remember

- **Project URLs** – check this option if you want WebCopier to remember up to 10 project URLs typed in the Project Settings / General window. They will be listed in the URL combo box for easy access.
- **Clean** – clean the list of all remembered URLs.
- **Find Strings** – check this option if you want WebCopier to remember up to 10 strings used in the Find window. They will be listed in the Find combo box for easy access.
- **Clean** – clean the list of all remembered Find strings.

Contents Font

- Allows user change the Contents Tree font. You can change font name, style, size and even script type to see the Contents of web site that is using language, other than English.



Premium Options

- **Run in System tray** – check this option if you want the program to show its icon in the Windows System tray instead of the Task bar.



- **Premium Options** are available only in the **Registered** version of WebCopier.

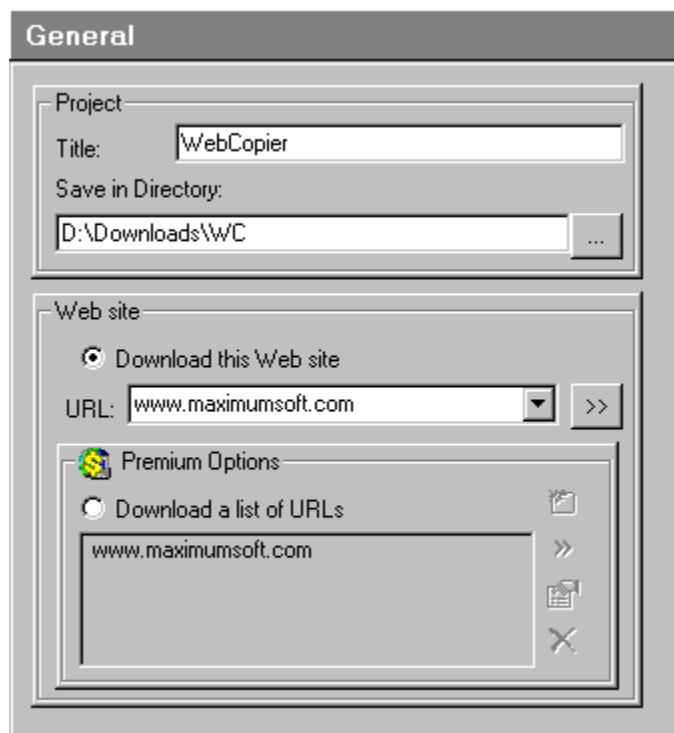
Project Settings

WebCopier Project represents a downloading task. The program keeps all your Projects with their settings between working sessions.

Each Project has a number of settings, which could be viewed or changed using the Project Settings dialog.


The settings are divided in four groups: General, Download, Contents and Avanced.

General settings




Project


- **Title** – the project title that will be shown in the Contents Tree and the program window caption. The title will help you later to separate this project from other ones.
- **Save in Directory** – the directory name where downloaded files will be saved. It's recommended to have a separate directory for each project.

You can type the directory name or press the  button to select it. If the directory does not exist, it will be created automatically when a download starts.

Web Site

- **Download this Web site** – the address of the web site you want to download.

You can type the address or press the  button to Import it.

-  **Download a list of URLs** – the list of web sites addresses you want to download together in one project.



- It's highly recommended to specify for each project unique **Save in Directory** name. Otherwise project files downloaded from the Internet can be overwritten by another project files, because they will be saved in the same directory.

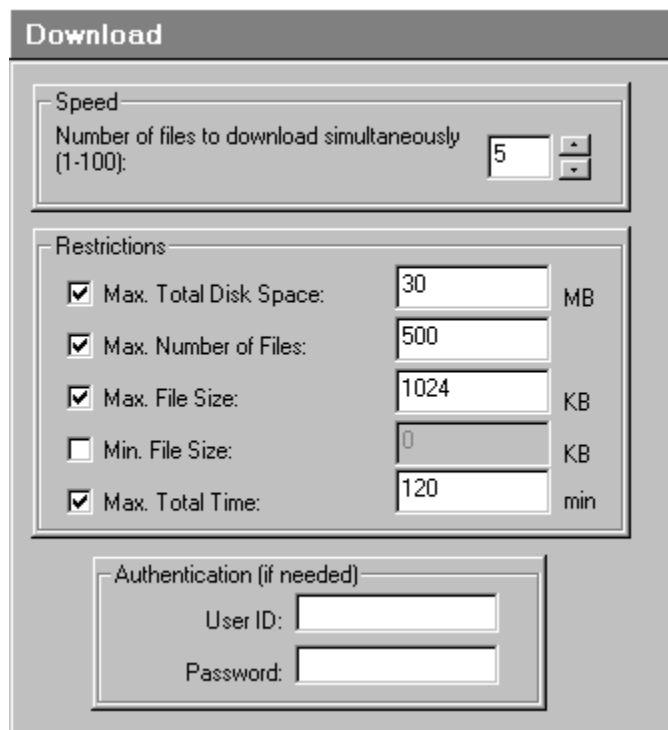


- The **Save in Directory** may include special macros (**[%d]** and **[%t]**). The macros can be used when you need to separate each project download, because, by default, each next download might overwrite files, downloaded before. The **[%d]** macro inserts the current day in the directory name, when the **[%t]** macro inserts the current time.



- The **Download a list of URLs** setting is a Premium Option and is available only in the **Registered** version of WebCopier.

Download settings



Download

Speed
Number of files to download simultaneously (1-100):

Restrictions

☒ Max. Total Disk Space: MB

☒ Max. Number of Files:

☒ Max. File Size: KB

☐ Min. File Size: KB

☒ Max. Total Time: min

Authentication (if needed)

User ID:

Password:

- **Speed** – the number of files that will be downloaded simultaneously. You can specify the number from 1 to 100. Default value is 5.
You may need to find the optimum number because small number could make the downloads slower, while too high value could make them unreliable because of possible timeout.
If you feel that your downloads are not reliable (you see too many errors number 12002 in the Log File Window), but you don't want to decrease the number, then try to increase the Timeout value.

Restrictions

- **Max. Total Disk Space** – the maximum total size of all downloaded files. The default value is 30 MB.
- **Max. Number of Files** – the maximum number of downloaded files. The default value is 500.
- **Max. File Size** – the maximum file size limit. Bigger files would not be downloaded. The default value is 2 MB.
- **Min. File Size** – the minimum file size limit. Smaller files would not be downloaded. The default value is 0 MB.
- **Max. Total Time** – the maximum download time. The default value is 120 min.

Authentication

- **User ID, Password** – User ID and Password for secure web site.
Leave the fields blank if you do not need to log on to access the site.



- These settings can be changed during a download.
- If files from HTML category do not match the **Min.** or **Max. File Size** restriction, they will be downloaded, parsed and, only after that, deleted.

Contents settings

These settings control the appearance and behavior of the Contents Tree. They don't affect the download process.

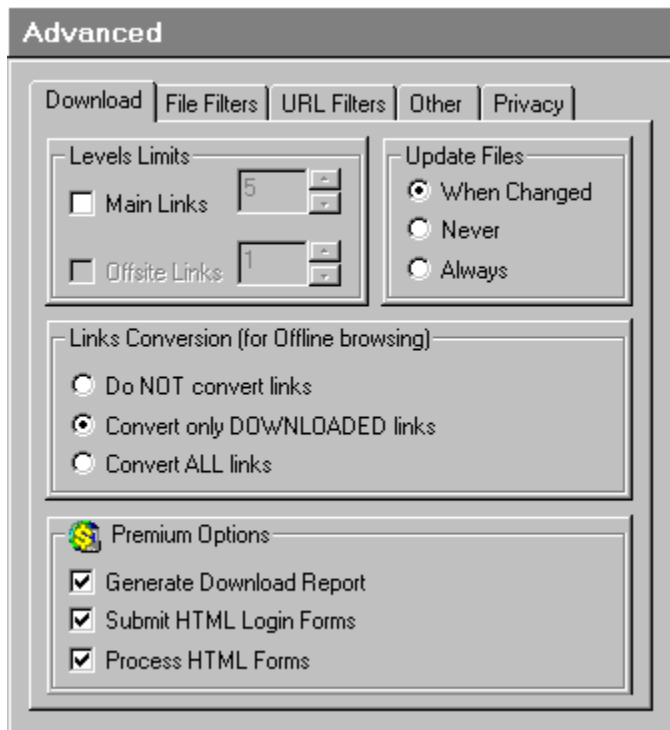
- **Initialize Tree before Download** - the Contents Tree will be rebuild (deleted and then created again) during download if this option is set. If it is not set the program will only add new tree nodes to the existing ones.
- **Update during Download** – if this option is set the Contents Tree will be updated during the download every time new files are found or a file's status is changed.

During Download

- **Expand all nodes** – the program will keep the Contents Tree expanded during the download.
- **Collapse all nodes** - the program will keep the Contents Tree collapsed during the download.

Show

- **All Files** - the Contents Tree will show all files.
- **Only Text (HTML) Files** – the Contents Tree will show only HTML files.
- **Show only N files** – limits the number of files the Contents Tree shows.
- **Use External Browser to view the files** – this option allows to use any external browser instead of the Integrated browser to see the downloaded files. To do that just double click on the file you want to see and the program will start your default web browser.
- **Break pages when printing** – controls page breaks when printing downloaded files.
- **Rename non-standard HTML files** –allows to rename non-standard HTML files (for example, “index.asp” becomes “index.asp.htm”) to be able view these files offline even when the corresponding server (Microsoft IIS from previous example) is not running on your computer.
- **Fast HTML Parsing** – increase HTML files parsing speed. It may make a big difference when you download very large websites (more than 10,000 links). On the other hand, with this option set on WebCopier will consume more RAM during the download.



Level Limits

- **Main Links** – sets the download [Levels](#) for all links, that have the same domain name as the starting URL.
- **Offsite Links** - sets the download [Levels](#) for all links, that have different domain name than the starting URL.

Update Files

- **When Changed** – file will be downloaded if it was not downloaded before or it's creation time or size was changed.
- **Never** – file will be downloaded only if it was not downloaded before.
- **Always** – file will be downloaded regardless was it changed or not.

Links Conversion

- **Do NOT convert links** – use this option to prevent links conversion after the download.
- **Convert only DOWNLOADED links** – use this option to allow the program to update all project links that have been downloaded to make them relative to the project directory and ready for offline browsing.
- **Convert ALL links** – use this option to allow the program to update all project links (including links that have not been downloaded) to make them relative to the project directory and ready for offline browsing.



Premium Options

- **Generate Download Report** – use this option to generate download report which shows an information about all processed links during download.

- **Submit HTML Login Forms** – automatically performs authentication based on HTML forms. Just specify your "User ID" and "Password", check this option, and WebCopier will submit this data every time it finds HTML login form.
- **Process HTML Forms** – automatically processes HTML forms that include <SELECT> and <OPTION> tags

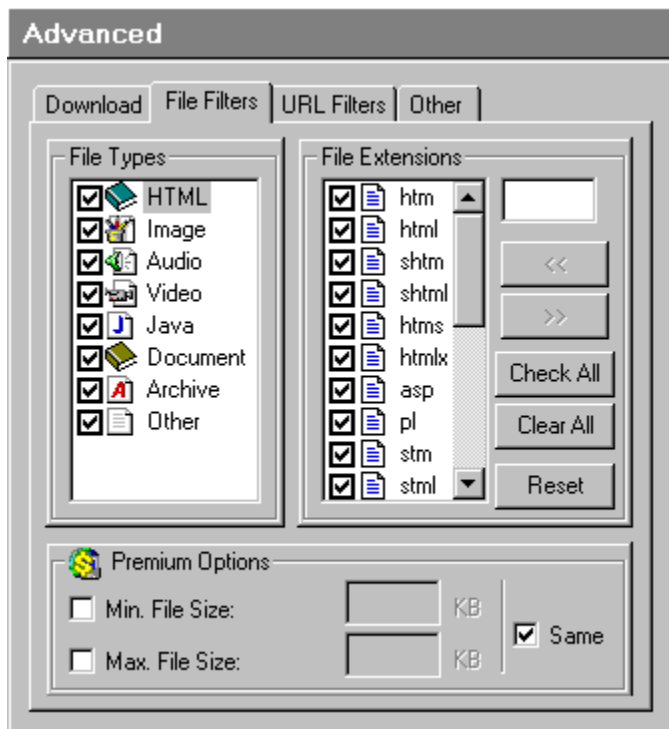


- The **Offsite Links** parameter is available only when you have specified to load files from **All Servers**, or if you have at least one URL filter with the action **Include** ([URL Filters](#) window).
- You can do the **Links Conversion** later at any time by using [Convert Links](#) menu command.



- The **Generate Download Report**, **Submit HTML Login Forms** and **Process HTML Forms** settings are Premium Options and are available only in the **Registered** version of WebCopier.

Advanced / File Filters settings



File filters allow you to selectively download files by file type.

For your convenience all files are grouped in file types categories: HTML, Image, Audio, Video, Java, Document, Archive and Other.

You may enable or disable loading the whole file types categories, by setting or removing checks on the File Types list.

- **Unchecked** category means that none of the file with extensions, listed in will be downloaded.
- **Checked** category means that all files with checked extensions, listed in will be loaded. Unchecked extensions will be skipped.
- You may edit the category by adding, changing or removing files extensions in the list.



Premium Options

You can set different limits for different file types (for example, HTML, Image, Audio), and even file extensions inside the same file group (for example, *.gif and *.jpg) can have different size limits.

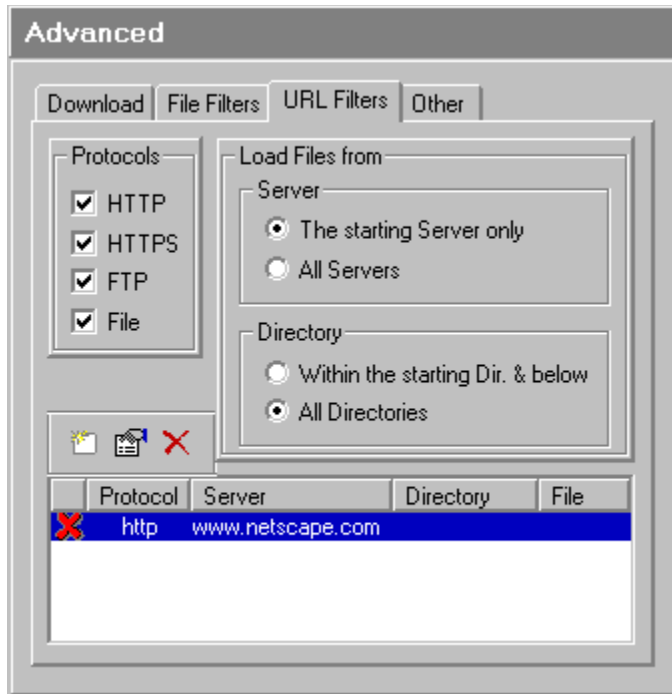
- **Min. File Size** – the minimum file size limit. Smaller files that belong to this File Group would not be downloaded.
- **Max. File Size** – the maximum file size limit. Bigger files that belong to this File Group would not be downloaded.
- **Same** – check this option if you want to set the same Min. and Max. File Size restriction for all extensions in the selected File Group. Uncheck the option if you need to set separate restrictions for different extensions in the same File Group.



- See the [File Filters](#) section for more information.



- The **File Size** restriction is a Premium Option and is available only in the **Registered** version of WebCopier.



URL filters allow you easily shape Project downloads by setting which files could be loaded and which should be skipped.

All URL Filters are divided into four sections:

- **Protocol** - restrict loading by protocol (http://www.server.com/dir/file.htm);
- **Server** - restrict loading by server name (http://**www.server.com**/dir/file.htm);
- **Directory** - restrict loading by path (http://www.server.com/**dir**/file.htm);
- **File** - restrict loading by filename (http://www.server.com/dir/**file**.htm).

Protocols

The Protocols list allows you to select or deselect each protocol directly.

Load Files From

Server

- **The starting Server only** - allows files for download only if their URL server part is the same as starting URL server.
- **All Servers** - load files without any server name restriction.

Directory

- **Within the starting Dir. & below** - allows files for download only if their URL directory part is equal to or begins from the directory in the starting URL.
- **All Directories** - load files without any directory name restriction.

Filters List

The Filters List allows you to add, change or remove URL filters.

To create a new filter press the corresponding button, fill the filter sections and select an action to **include** or **exclude** files based on the filter settings.

You can leave a section empty to skip checking of this section.

Also, you can use wildcards asterisk (*) and symbol (^) to match patterns.

Asterisk (*) wildcard character matches any number of characters. The symbol (^) matches any single character.



- See the [URL Filters](#) section for more information.

Advanced / Other settings

The screenshot shows the 'Advanced' settings window with the 'Other' tab selected. The window has a title bar 'Advanced' and four tabs: 'Download', 'File Filters', 'URL Filters', and 'Other'. The 'Other' tab contains several sections: 'Agent Identification' with a dropdown menu set to 'WebCopier' and a 'version' field; 'Directory structure' with three radio buttons: 'Relative' (selected), 'Based on URLs', and 'One directory'; 'Website Preview' with two checkboxes: 'Detailed scanning' and 'Keep HTML files'; 'Default HTML File' with a 'File Name:' label and a text box containing 'default.htm'; and 'Download' with 'Timeout (sec):' set to '60' and 'Retries:' set to '5'.

Agent Identification

Sometimes it's necessary to change the way WebCopier represents itself to other Web servers.

This is called **Agent Identification**, and the default setting is WebCopier. The program has several preset values you can choose from.

Usually the Agent Identification value doesn't affect most websites. However, sometimes you may experience problems with downloading some protected websites until the correct Agent Identification is set.

- The combobox allows to choose between the following Agent Identifications: **WebCopier**, **Anonymous**, **Microsoft Internet Explorer**, **Netscape Communicator**, **Opera** and **User defined**.
- **version** – sets the version number if Microsoft Internet Explorer, Netscape Communicator or Opera Agent Identification is selected.

- **Use this identification** – allows to type your own Identification text when the User defined Agent Identification is selected.

Directory structure

- **Relative** – the files will be saved with the names relative to the file name of the starting page keeping the original website directory structure.
- **Based on URLs** – the files will be saved with the file names that include full URL.
- **One directory** – all downloaded files will be saved in one directory ignoring the original website directory structure.

Website Preview

- **Detailed scanning** – when this option is on, the program will query each file size during preview. It will give you information about the total size of the website. On the other hand, it may slow down the preview process.
- **Keep HTML files** – to build the website structure, the program has to download HTML files (the files with extensions listed in the [HTML group](#)) and parse them (find all HTML links). After that you have a choice to keep these files, or to delete them automatically. It's controlled by this option.

Default HTML File

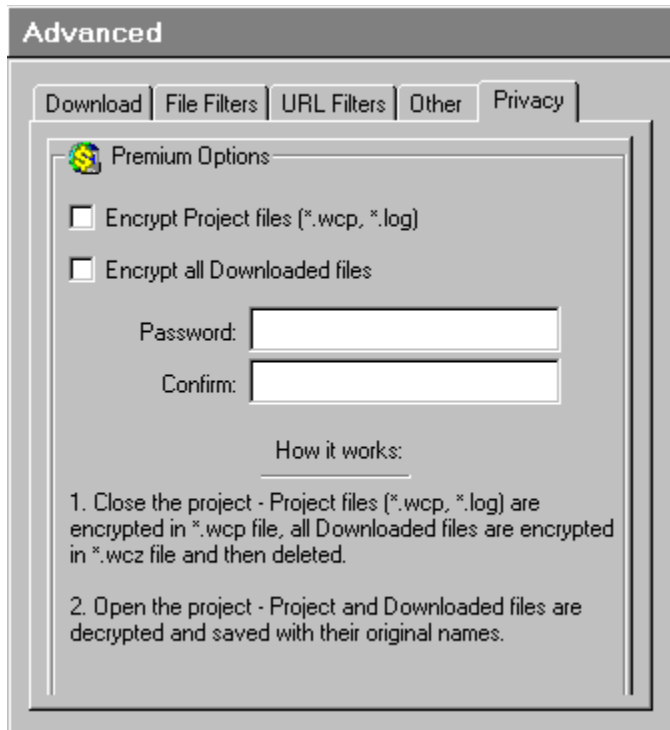
- **File Name** – default HTML file name. When an HTML link does not include file name (for example "www.somesite.com"), WebCopier assigns the "default.htm" name to the starting page, because web server doesn't tell the actual name of the starting page. Now you can assign a different name to the starting website page.

Download

- **Timeout** – specifies the amount of time (in seconds) the program will wait for web server response. The valid range is from 10 to 600 seconds. The default value is 60.
- **Retries** – number of times WebCopier will try to download a file if any error occur. The number can be from 0 to 100. The default value is 5.



- See the [How website preview works](#) section for more information.



Premium Options

These settings are Premium Options and are available only in the **Registered** version of WebCopier.

- **Encrypt Project files** – allows to encrypt project (*.wcp) and log (*.log) files.
- **Encrypt all Downloaded files** – allows to encrypt all files that have been downloaded in this project.
- **Password** – the encryption password.
- **Confirm** – the field where you must confirm the encryption password.



- **Close project** - the Project files (*.wcp, *.log) are encrypted in *.wcp file, all Downloaded files are encrypted in *.wcz file and then deleted.
- **Open project** - the Project and Downloaded files are decrypted, saved with their original names, and ready to use.

Print command (File menu)

Use this command to print a document. This command presents a Print dialog box, where you may specify the range of pages to be printed, the number of copies, the destination printer, and other printer setup options.

Shortcuts

Toolbar:



Keys: CTRL+P

Print Folder command (File menu)

Use this command to print a document. This command presents a Print dialog box, where you may specify the range of pages to be printed, the number of copies, the destination printer, and other printer setup options.

Print Contents command (File menu)

Use this command to print the Contents Tree. This command presents a Print dialog box, where you may specify the range of pages to be printed, the number of copies, the destination printer, and other printer setup options.

Print dialog box

The following options allow you to specify how the document should be printed:

Printer

This is the active printer and printer connection. Choose the Setup option to change the printer and printer connection.

Setup

Displays a Print Setup dialog box, so you can select a printer and printer connection.

Print Range

Specify the pages you want to print:

- | | |
|------------------|---|
| All | Prints the entire document. |
| Selection | Prints the currently selected text. |
| Pages | Prints the range of pages you specify in the From and To boxes. |

Copies

Specify the number of copies you want to print for the above page range.

Collate Copies

Prints copies in page number order, instead of separated multiple copies of each page.

Print Quality

Select the quality of the printing. Generally, lower quality printing takes less time to produce.

Print Progress Dialog

The Printing dialog box is shown during the time that WebCopier is sending output to the printer. The page number indicates the progress of the printing.

To abort printing, choose Cancel.

Print Setup command (File menu)

Use this command to select a printer and a printer connection. This command presents a Print Setup dialog box, where you specify the printer and its connection.

Print Setup dialog box

The following options allow you to select the destination printer and its connection.

Printer

Select the printer you want to use. Choose the Default Printer; or choose the Specific Printer option and select one of the current installed printers shown in the box. You install printers and configure ports using the Windows Control Panel.

Orientation

Choose Portrait or Landscape.

Paper Size

Select the size of paper that the document is to be printed on.

Paper Source

Some printers offer multiple trays for different paper sources. Specify the tray here.

Options

Displays a dialog box where you can make additional choices about printing, specific to the type of printer you have selected.

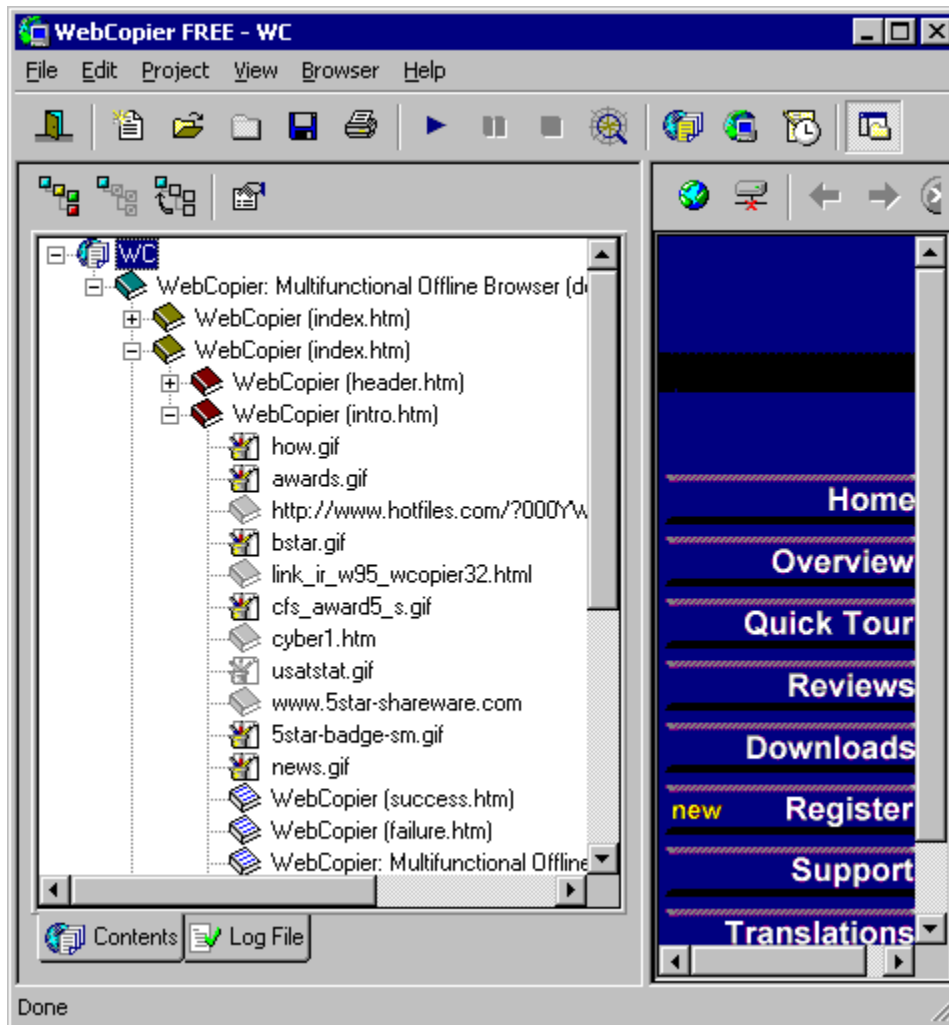
Network...

Choose this button to connect to a network location, assigning it a new drive letter.

Page Setup command (File menu)

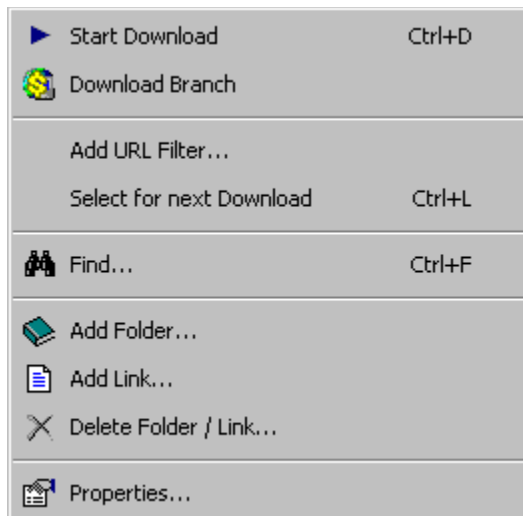
<< Write application-specific help here. >>


Using the Contents Tree



The Contents Tree is designed to perform several different tasks:





- Shows a **graphical representation** of a Web site.
 - Each tree node represents web site file.
 - Different file types have their own icons.
 - Each icon is grayed out when the file is not downloaded yet or has a red "X" over it when an error occurred during the file download.
 - As nodes are selected for the next download, each icon will have a check mark over it.
- Helps to **view downloaded files**.
Double-click the left mouse button (or press Enter key) on the tree node to load the file into Integrated Browser or your default web browser.
- Gives **quick access** to other program functions.
Just click the right mouse button and the contents popup menu will be shown.



- **Start Download** – use this command to start the download.
-  **Download only this Branch** – allows downloading only files that belong to the selected tree branch.
- **Add URL Filter** – helps to create a URL filter based on selected node properties.
- **Select for next Download** – includes selected node into next download.
- **Find** – allows searching the contents by node title, URL and file name.
- **Add Folder** – use this command to add a folder (HTML file) to the tree.
- **Add Link** – this command adds a link (any file, except HTML) to the tree.
- **Delete Folder / Link** – use this command to delete the selected tree node(s).
- **Properties** - shows selected node properties, such as title, URL and file name. If the selected node is the root one, you will see the website properties.



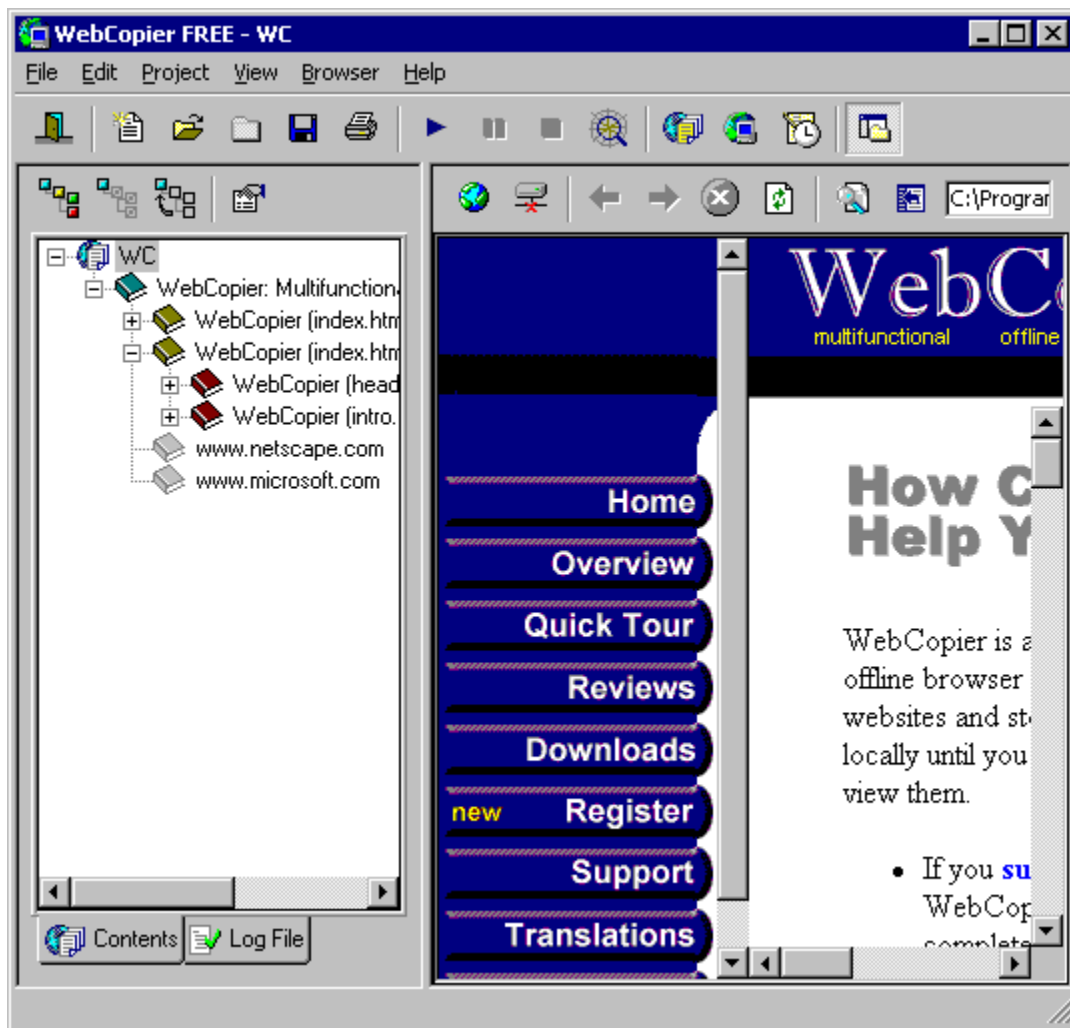
- To change the Tree settings go to the **Contents** section of the Project Settings dialog.

- Use special Toolbar buttons to  Expand Tree,  Collapse it,  Jump to the Root, or  show node properties.
- **Add Folder**, **Add Link** and **Delete** commands change only the contents tree structure and do not affect the download process.
- The tree supports multiple selections for the following commands: Delete, Add URL Filter, Select for next Download, and Properties.
- To print the Contents tree use the File / Print Contents menu.
- You can also use the **Enter** key to view selected tree file in the browser, and the **Delete** button to delete the tree node(s).




- The **Download only this Branch** command is a Premium Option and is available only in the **Registered** version of WebCopier.

Using the Integrated browser



The integrated browser allows you to:

- **View** downloaded files, even during the download.
To do that just double-click on the file (the Contents Tree node) you want to see.
 - **Browse** the Internet.
Use "Browser / Go To" menu.
Also you can use the Address bar -- just type a website URL, press "Enter", and the browser will load that site.
 - **Print** entire Web site or only specific part of it.
 - Use the "Print Folder" menu to print all files starting from the selected tree node.
 - Use the "Print" menu to print a file loaded into the integrated browser.
-  • To use the integrated browser you need to have Microsoft Internet Explorer 3.x or higher installed on your computer. If you do not have it yet, you can download/install it **free** from the Microsoft web site:

www.microsoft.com/windows/ie.

- The “Print Folder” menu is enabled only when the selected tree node represents an HTML file.
- The “Print” menu is enabled only when some file is loaded into the integrated browser.
- To print all downloaded files at once select the Contents Tree root node and use the “Print Folder” menu (see warnings below).




- To print all downloaded files at once can be a very time- and resource-consuming task.
- Sometimes it's better to print a web site branch by branch. Find the starting folder (HTML) file of the branch and use the “Print Folder” menu. Repeat the procedure for other branches.

File Filters

File filters allow you to selectively download files by file type.

For your convenience all files are grouped in file type categories: HTML, Image, Audio, Video, Java, Document, Archive and Other. With this feature, you may enable or disable loading of entire categories of file types, by setting or removing checks on the File Types list in the Project Settings / Advanced / File Filters dialog:

- An **Unchecked** category means that **none** of the file with extensions listed will be downloaded.
- A **Checked** category means that **all** files with checked extensions, listed in will be loaded. Unchecked extensions will be skipped.
- You may edit a category by adding, changing or removing file extensions in the list. It can be done in the Project Settings / Advanced / File Filters dialog.
-  **File size** restrictions can be based on file extension. You can set different limits for different file types (for example, HTML, Image, Audio), and even file extensions inside the same file group (for example, *.gif and *.jpg) can have different size limits.



- The File Filters check is case insensitive.
- There are two special categories: HTML and Other.
 - All files from the HTML category are parsed (searched for links) by WebCopier.
 - Even when the HTML category is unchecked, files from this category will be downloaded, parsed and, only after that, deleted.
 - WebCopier appends the HTM extension to all downloaded HTML files that have nonstandard extensions (for example, ASP). Otherwise, to view HTML files with nonstandard extensions, a special web server has to be running on your computer.
 - If the Other category is unchecked, all files with unknown extensions will be excluded from download.
- WebCopier also parses Java (extensions .js and .class) and Shockwave (.swf) files.



- Add a new extension to the HTML category only when you are sure that these files include HTML tags. Otherwise it may slow down the download process.



- The **File size** restriction based on file extension is a Premium Option and is available only in the **Registered** version of WebCopier.

URL Filters

URL filters allow you to easily shape Project downloads by setting which files should be loaded and which should be skipped.

All URL Filters are divided into four sections:

- **Protocol** - restrict loading by protocol (**http**://www.server.com/dir/file.htm);
- **Server** - restrict loading by server name (http://**www.server.com**/dir/file.htm);
- **Directory** - restrict loading by path (http://www.server.com/**dir**/file.htm);
- **File** - restrict loading by filename (http://www.server.com/dir/**file.htm**).

To create a new filter press the corresponding button, fill in the filter sections and select an action to **include** or **exclude** files based on the filter settings. It can be done in the Project Settings / Advanced / URL Filters dialog or by using the Contents Tree popup menu.

You can leave a section empty to skip checking of this section.

Also, you can use the wildcards asterisk (*) and caret (^) to match patterns. Asterisk (*) wildcard character matches any number of characters. The caret (^) matches any single character.

The URL Filter sections work together based on their priorities, from File, the highest priority, through Directory and Server, to Protocol, the lowest priority.

For example,

Let's assume that we have two filters (underline shows an empty section):

Exclude: http://_/_/download/_ and

Include: http://_/_/index.html.

In this case, the file **http://www.site.com/download/index.html** will be excluded by the first filter (Directory section) and included by the second one (File section). As the result, the file will be downloaded, because the File section has higher priority than the Directory section and therefore the second filter overrides the first one.



- The URL filters check is case insensitive.
- You can use the Contents Tree to create / edit new URL filters.

Command line parameters

The program supports the following command line parameters:

Webcopier.exe project.wcp[wct] -d -e -disc -shut -conv

project.wcp[wct]	-	project [or template] full file name
-d	-	start download automatically
-e	-	close the program after the download is completed
-disc	-	disconnect from the Internet after the download is completed
-shut	-	shut down the computer after the download is completed
-conv	-	convert links for offline browsing



- The project / template file name must include the full path. If the name has spaces, it must be enclosed in quotations.
- You can use the command line parameters if you prefer to use Windows Scheduler or System Agent instead of the program internal scheduler.
- If a template file name is specified as the command line parameter, the program automatically creates the project file with the same file name as the template but with extension .wcp. It can be useful if you want to create the template file outside WebCopier and use its data to control the download.
See [Using Templates](#) for more information.

How website preview works

Website preview allows you to see the website structure (the Contents Tree) before you start the actual download.

You can use this feature to:

- retrieve only the website structure,
- find the site parts you are interested in, and download only them by setting URL filters,
- get an estimation of the total website size.

Website preview is not an immediate process. It may take some time to scan, but it will be faster than the actual download. This is because web servers, in contrast with file servers, usually do not give the information about site structure; therefore WebCopier has to load the first HTML file, parse it (find all HTML links), load the first found link, parse it, and so on.

That's why to show the site structure, the program must download and analyze all HTML files. After that you have a choice to keep these files, or to delete them automatically. It's controlled by the **Keep HTML files** option in the Project Settings / Advanced / Other window.

Also, during the preview, WebCopier can find each website file size, to let you know the total site size. This option is called **Detailed scanning**. When this option is on, the preview will take more time than when the option is off.



- You can control how deep the site scanning can go by limiting the **Max. Number of Files** parameter (Project Settings / Download window), or perhaps better by setting **Levels Limits** (Project Settings / Advanced / Download window).

Using Templates

The purpose of Templates is to simplify Projects creation by letting users save their custom settings and reuse them later.

You can create as many templates as you want with customized properties and use them when creating a new Project.

How to create a Template

- Create a new project or open an existing one.
- Apply your custom settings to the project by using Project Settings dialog.
- Save the project data as a template.
Use the “Save As...” menu and change the “Save as type” to the “WebCopier Template File”.

or

- You can create template by yourself.
See the Template Reference section for more information.

How to use a Template

- Set up the **Default Template**.
It can be done in the Program Options / General window. After that each newly created Project accepts the chosen template settings.
- Open the Template.
You can open the template by using “Open...” menu and changing the “Files of type” to the “WebCopier Template File”. The template settings will be applied to the currently opened project.

Tips and Tricks

Here are few recommendations that may help you to get more from the program.

- You can change the Project Settings during download. It can be useful to change the number of simultaneously downloaded files or download restrictions.
- The Download Info dialog can be moved away to let you use the Integrated browser .
- If you need to download a group of several projects, include all of them in the schedule list, set desired **Download Interval** for the first project and choose **Following Previous** for all others.
- If you have any questions or suggestions for how to improve the program do not hesitate to send an e-mail message to wcopier@maximumsoft.com.
- Use Templates to save your custom project settings and use them to create a new project.
- You can use the URL Filters to shape Project downloads by setting which files should be downloaded and which should be skipped.

To be continued. . .

Template Reference - Introduction

Template files contain WebCopier project parameters.

The information is stored in **text (ASCII)** format and can be read and edited with any text editor, such as Notepad, or generated outside WebCopier by your own program or script.

Each line in the template represents the project parameter.

The line begins with reserved for each parameter string (**keyword**) and has the parameter specific data.

For example, line

WC_START_URL "www.maximumsoft.com"

contains starting URL information.



- Template does not need to include all possible project parameters. It should include only parameters that differ from WebCopier defaults.
- The parameters can be listed in the Template in any order.

[NEXT >>](#)

Template Reference - Conventions

The following conventions are used throughout this guide.

Convention	Indicates
<i>keyword</i>	A reserved for each project parameter string, like WC_START_URL .
<i>string</i>	A project parameter data represented by a string enclosed in double quotation marks, like "www.maximumsoft.com"
<i>integer</i>	A project parameter data represented by an integer, like 500.
<i>double</i>	A project parameter data represented by a floating point value, like 500.00.

Based on these conventions, each template project parameter can be represented as

keyword *string or integer or double*



- File Filters and URL Filters have more complicated form than the above one.



- All **strings must be enclosed in double quotation marks.**

<< [PREVIOUS](#) [NEXT](#) >>

Template Reference - Keywords

This is the list of all template keywords.

WC_TITLE *string*

<u>OPERAND</u>	<u>DESCRIPTION</u>
----------------	--------------------

<i>string</i>	Project <u>Title</u> parameter.
---------------	---------------------------------

DEFINITION

The project title that will be shown in the Contents Tree and the program window caption. The title will help you later to separate this project from other ones.

EXAMPLE

WC_TITLE	"WebCopier web site"
----------	----------------------

WC_PROJECT_DIR *string*

<u>OPERAND</u>	<u>DESCRIPTION</u>
----------------	--------------------

<i>string</i>	<u>Save in Directory</u> parameter.
---------------	-------------------------------------

DEFINITION

The directory name where downloaded files will be saved.

EXAMPLE

WC_PROJECT_DIR	"C:\Program Files\WebCopier\Download"
----------------	---------------------------------------

WC_START_URL *string*

<u>OPERAND</u>	<u>DESCRIPTION</u>
----------------	--------------------

<i>string</i>	<u>Address (URL) of the web Site</u> .
---------------	--

DEFINITION

The address(s) of the web site(s) you want to download.

EXAMPLE

WC_START_URL	"www.maximumsoft.com"
--------------	-----------------------

WC_SINGLE_URL *string*

<u>OPERAND</u>	<u>DESCRIPTION</u>
----------------	--------------------

integer Download this Web site parameter.

DEFINITION

Indicates that the project has only one starting URL.

EXAMPLE

WC_SINGLE_URL 1

WC_USER_ID *string*

OPERAND DESCRIPTION

string User ID to access secure web site.

DEFINITION

User ID for secure web site. Leave the fields blank if you do not need to log on to access the site.

EXAMPLE

WC_USER_ID ""

WC_PASSWORD *string*

OPERAND DESCRIPTION

string Password to access secure web site.

DEFINITION

Password for secure web site. Leave the fields blank if you do not need to log on to access the site.

EXAMPLE

WC_PASSWORD ""

WC_THREADS *integer*

OPERAND DESCRIPTION

integer Speed parameter.

DEFINITION

The number of files that will be downloaded simultaneously.

EXAMPLE

WC_THREADS 5

WC_FILE_TYPES *integer*

OPERAND DESCRIPTION

integer

File Types Categories parameter.

It can be any combination of the following values (combine using the bitwise OR operator):

1 – HTML
2 – Image
8 – Audio
16 – Video
32 – Java
64 – Other
128 – Document
256 – Archive

DEFINITION

Defines what file types will be downloaded

EXAMPLE

WC_FILE_TYPES 511

WC_OFFSITE *integer*

OPERAND DESCRIPTION

integer Server parameter.

0 – **The starting Server only** - allows files for download only if their URL server part is the same as starting URL server

1- All Servers - load files without any server name restriction

DEFINITION

Defines servers to download files from.

EXAMPLE

WC_OFFSITE 0

WC_LIM_DS *integer*

OPERAND DESCRIPTION

integer Max. Total Disk Space restriction.

0 – Ignore the restriction.

1 – Use the restriction.

DEFINITION

Allows to limit the download by maximum total disk space used by downloaded files.

EXAMPLE

WC_LIM_DS 1

WC_MAX_DS *double*

<u>OPERAND</u>	<u>DESCRIPTION</u>
----------------	--------------------

<i>double</i>	<u>Max. Total Disk Space</u> value, in bytes.
---------------	---

DEFINITION

The maximum total disk space used by downloaded files, in bytes.

EXAMPLE

WC_MAX_DS	31457280.000000
-----------	-----------------

WC_LIM_FQ *integer*

<u>OPERAND</u>	<u>DESCRIPTION</u>
----------------	--------------------

<i>integer</i>	<u>Max. Number of files</u> restriction.
----------------	--

0 – Ignore the restriction.

1 – Use the restriction.

DEFINITION

Allows to limit the download by maximum number of downloaded files.

EXAMPLE

WC_LIM_FQ	1
-----------	---

WC_MAX_FQ *integer*

<u>OPERAND</u>	<u>DESCRIPTION</u>
----------------	--------------------

<i>integer</i>	<u>Max. Number of files</u> value.
----------------	------------------------------------

DEFINITION

The maximum number of downloaded files.

EXAMPLE

WC_MAX_FQ	500
-----------	-----

WC_LIM_MAXFS *integer*

<u>OPERAND</u>	<u>DESCRIPTION</u>
----------------	--------------------

<i>integer</i>	<u>Max. File Size</u> restriction.
----------------	------------------------------------

0 – Ignore the restriction.

1 – Use the restriction.

DEFINITION

Allows to limit the download by maximum file size.

EXAMPLE

WC_LIM_MAXFS 1

WC_MAX_MAXFS *double*

<u>OPERAND</u>	<u>DESCRIPTION</u>
----------------	--------------------

<i>double</i>	<u>Max. File Size</u> value, in bytes.
----------------------	--

DEFINITION

The maximum file size, in bytes.

EXAMPLE

WC_MAX_MAXFS 1048576.000000

WC_LIM_MINFS *integer*

<u>OPERAND</u>	<u>DESCRIPTION</u>
----------------	--------------------

<i>integer</i>	<u>Min. File Size</u> restriction.
-----------------------	------------------------------------

0 – Ignore the restriction.

1 – Use the restriction.

DEFINITION

Allows to limit the download by minimum file size.

EXAMPLE

WC_LIM_MINFS 0

WC_MAX_MINFS *double*

<u>OPERAND</u>	<u>DESCRIPTION</u>
----------------	--------------------

<i>double</i>	<u>Min. File Size</u> value, in bytes.
----------------------	--

DEFINITION

The minimum file size, in bytes.

EXAMPLE

WC_MAX_MINFS 0.000000

WC_LIM_TIME *integer*

<u>OPERAND</u>	<u>DESCRIPTION</u>
----------------	--------------------

<i>integer</i>	<u>Max. Total Time</u> restriction.
----------------	-------------------------------------

0 – Ignore the restriction.

1 – Use the restriction.

DEFINITION

Allows to limit the download by time.

EXAMPLE

WC_LIM_TIME	1
-------------	---

WC_MAX_TIME *integer*

<u>OPERAND</u>	<u>DESCRIPTION</u>
----------------	--------------------

<i>integer</i>	<u>Max. Total time</u> value.
----------------	-------------------------------

DEFINITION

The maximum time allowed for download.

EXAMPLE

WC_MAX_TIME	120
-------------	-----

WC_TR_UPDATE *integer*

<u>OPERAND</u>	<u>DESCRIPTION</u>
----------------	--------------------

<i>integer</i>	<u>When downloading</u> parameter.
----------------	------------------------------------

0 – Do not update the tree during the download.

1 – The program will keep the tree expanded during the download.

2 – The program will keep the tree collapsed during the download.

DEFINITION

These settings control the appearance and behavior of the Contents Tree during the download.

EXAMPLE

WC_TR_UPDATE	1
--------------	---

WC_TR_HTML *integer*

<u>OPERAND</u>	<u>DESCRIPTION</u>
----------------	--------------------

<i>integer</i>	<u>Show</u> parameter.
----------------	------------------------

- 0 – The Contents Tree shows all files.
- 1 – The Contents Tree shows HTML files only.

DEFINITION

This setting controls what files the Contents Tree shows

EXAMPLE

WC_TR_HTML 0

WC_TR_LIMIT_F *integer*

<u>OPERAND</u>	<u>DESCRIPTION</u>
----------------	--------------------

<i>integer</i>	<u>Show only N files</u> parameter.
----------------	-------------------------------------

- 0 – The Contents Tree will show all files.
- 1 – The Contents Tree will show only N first files.

DEFINITION

This setting allows to limit the number of files shown in the Contents Tree.

EXAMPLE

WC_TR_LIMIT_F 0

WC_TR_MAX_F *integer*

<u>OPERAND</u>	<u>DESCRIPTION</u>
----------------	--------------------

<i>integer</i>	<u>Shown only N files</u> value.
----------------	----------------------------------

DEFINITION

The maximum number of files shown in the Contents Tree.

EXAMPLE

WC_TR_MAX_F 500

WC_TR_INIT *integer*

<u>OPERAND</u>	<u>DESCRIPTION</u>
----------------	--------------------

<i>integer</i>	<u>Initialize Tree before Download</u> parameter.
----------------	---

- 0 – The Contents Tree will be carried out from the previous download. Only new nodes will be created.
- 1 – The Contents Tree will be rebuild (deleted and then created again) during download.

DEFINITION

This setting controls how the download deals with the Contents Tree.

EXAMPLE

WC_TR_INIT 1

WC_TR_EXTBR *integer*

<u>OPERAND</u>	<u>DESCRIPTION</u>
----------------	--------------------

<i>integer</i>	<u>Use External Browser to view the files</u> parameter. 0 – The program will use the <u>Integrated browser</u> . 1 – The program will use default web browser.
----------------	---

DEFINITION

This setting controls what browser will be used to view downloaded files.

EXAMPLE

WC_TR_EXTBR 0

WC_DIRSTR *integer*

<u>OPERAND</u>	<u>DESCRIPTION</u>
----------------	--------------------

<i>integer</i>	<u>Directory structure</u> parameter. 0 – relative to the starting page. 1 – based on URLs. 2 – one directory.
----------------	---

DEFINITION

This setting controls how the downloaded files will be saved.

EXAMPLE

WC_DIRSTR 0

WC_UMETHOD *integer*

<u>OPERAND</u>	<u>DESCRIPTION</u>
----------------	--------------------

<i>integer</i>	<u>Update Files</u> parameter. 0 – when changed. 1 – always. 2 – never.
----------------	--

DEFINITION

This setting specifies when files will be downloaded and when skipped.

EXAMPLE

WC_UMETHOD 0

WC_UPDLINKS	<i>integer</i>
--------------------	----------------

<u>OPERAND</u>	<u>DESCRIPTION</u>
<i>integer</i>	<u>Update Links automatically</u> parameter. 0 – No. 1 – Downloaded links. 2 – All links

DEFINITION

This options allows the program to update all project links to make them relative to the project directory and ready for offline browsing.

EXAMPLE

WC_UPDLINKS 1

WC_TIMEOUT	<i>integer</i>
-------------------	----------------

<u>OPERAND</u>	<u>DESCRIPTION</u>
<i>integer</i>	<u>Timeout</u> parameter, in seconds.

DEFINITION

This options specifies the amount of time (in seconds) the program will wait for web server response.

EXAMPLE

<u>WC_TIMEOUT</u>	60
-------------------	----

WC_RETRIES *integer*

<u>OPERAND</u>	<u>DESCRIPTION</u>
<i>integer</i>	<u>Retries</u> parameter.

DEFINITION

This options specifies number of times WebCopier will try to download a file if any error occur.

EXAMPLE

WC_RETRIES	5
------------	---

WC_LIM_L *integer*

<u>OPERAND</u>	<u>DESCRIPTION</u>
----------------	--------------------

<i>integer</i>	<u>Main Links</u> restriction. 0 – Ignore the limit. 1 – Use the limit.
----------------	---

DEFINITION

Sets the download [Levels](#) for all links, that have the same domain name as the starting URL.

EXAMPLE

WC_LIM_L	0
----------	---

WC_MAX_L *integer*

<u>OPERAND</u>	<u>DESCRIPTION</u>
----------------	--------------------

<i>integer</i>	<u>Main Links</u> restriction value.
----------------	--------------------------------------

DEFINITION

The [Levels](#) value for all links, that have the same domain name as the starting URL.

EXAMPLE

WC_MAX_L	5
----------	---

WC_LIM_OL *integer*

<u>OPERAND</u>	<u>DESCRIPTION</u>
----------------	--------------------

<i>integer</i>	<u>Offsite Links</u> restriction. 0 – Ignore the limit. 1 – Use the limit.
----------------	--

DEFINITION

Sets the download [Levels](#) for all links, that have different domain name than the starting URL.

EXAMPLE

WC_LIM_OL	0
-----------	---

WC_MAX_OL *integer*

<u>OPERAND</u>	<u>DESCRIPTION</u>
----------------	--------------------

<i>integer</i>	<u>Main Links</u> restriction value.
----------------	--------------------------------------

DEFINITION

The [Levels](#) value for all links, that have different domain name than the starting URL.

EXAMPLE

WC_MAX_OL 5

WC_DOWN *integer*

<u>OPERAND</u>	<u>DESCRIPTION</u>
----------------	--------------------

<i>integer</i>	<u>Directory</u> parameter.
----------------	-----------------------------

0 – **All Directories** - load files without any directory name restriction.

1 – **Within the starting Dir. & below** - allows files for download only if their URL directory part is equal to or begins from the directory in the starting URL.

DEFINITION

This setting defines directories to download files from.

EXAMPLE

WC_DOWN 0

WC_PROTOCOL *integer*

<u>OPERAND</u>	<u>DESCRIPTION</u>
----------------	--------------------

<i>integer</i>	<u>Protocols</u> parameter.
----------------	-----------------------------

It can be any combination of the following values (combine using the bitwise OR operator):

1 – HTTP

2 – HTTPS

4 – FTP

8 – File

DEFINITION

Defines what protocols can be used to download files.

EXAMPLE

WC_PROTOCOL 15

WC_FILE_EXT *integer1 integer2 string double1 double2*

<u>OPERAND</u>	<u>DESCRIPTION</u>
----------------	--------------------

<i>integer1</i>	<u>File Filter</u> file type parameter.
-----------------	---

It can be any combination of the following values (combine using the bitwise OR operator):

- 1 – HTML
- 2 – Image
- 8 – Audio
- 16 – Video
- 32 – Java
- 64 – Other
- 128 – Document
- 256 – Archive

integer2 Action type.

0 – Exclude files with this extension from download.
 1 – Include files with this extension into download.
 2 – Remove the extension from the extensions list.

string File extension

double1 Min. File Size value, in bytes.

double2 Max. File Size value, in bytes.

DEFINITION

Defines the file extensions (categories) list to be used during the download.
 See the File Filters section for more information.

EXAMPLE

WC_FILE_EXT 64 0 "swf" 0 0



- You do not need to specify all possible file extensions you want to include or exclude from the download.
- Save only the difference between your list and WebCopier defaults.

WC_URL_FILTER	<i>integer1</i>	<i>integer2</i>	<i>string1</i>	<i>string2</i>	<i>string3</i>
---------------	-----------------	-----------------	----------------	----------------	----------------

OPERAND	DESCRIPTION
---------	-------------

<i>integer1</i>	<u>URL Filter</u> action type parameter. 0 – Exclude files from download based on this filter. 1 – Include files into download based on this filter.
------------------------	--

<i>Integer2</i>	Protocol type.
------------------------	----------------

It can be any combination of the following values (combine using the bitwise OR

operator):

- 1 – HTTP
- 2 – HTTPS
- 4 – FTP
- 8 – File

string1 Server section

String2 Directory section

String3 File name section

DEFINITION

Defines a URL filter to be used during the download.
See the URL Filters section for more information.

EXAMPLE

WC_URL_FILTER 0 1 "www.netscape.com" "" ""

WC_DETPREV *integer*

<u>OPERAND</u>	<u>DESCRIPTION</u>
----------------	--------------------

<i>integer</i>	<u>Detailed scanning</u> parameter.
----------------	-------------------------------------

- 0 – No.
- 1 – Yes.

DEFINITION

This setting defines the website scanning.

EXAMPLE

WC_DETPREV 0

WC_KEEPTHML *integer*

<u>OPERAND</u>	<u>DESCRIPTION</u>
----------------	--------------------

<i>integer</i>	<u>Keep HTML files</u> parameter.
----------------	-----------------------------------

- 0 – No.
- 1 – Yes.

DEFINITION

This setting defines do you want to keep HTML files after the website preview is completed, or to delete them automatically.

EXAMPLE
WC_KEEPHTML 0

WC_AGENTID *string*

OPERAND DESCRIPTION

integer Agent Identification parameter.

DEFINITION
This setting defines the Agent Identification text.

EXAMPLE
WC_AGENTID “WebCopier”

WC_DEFFNAME *string*

OPERAND DESCRIPTION

String Project Default HTML File Name parameter.

DEFINITION
This setting defines the Default HTML file name.

EXAMPLE
WC_DEFFNAME "index.htm"

WC_REPORT *integer*

OPERAND DESCRIPTION

integer Generate Download Report parameter.

0 – No.
1 – Yes.

DEFINITION
This setting defines do you want to generate a download report, or not.

EXAMPLE
WC_REPORT 0

WC_RENAMEHTML *integer*

OPERAND DESCRIPTION

integer Rename non-standard HTML files parameter.

0 – No.
1 – Yes.

DEFINITION

This setting allows to disable non-standard HTML files renaming.

EXAMPLE

WC_RENAMEHTML 1

WC_PAGEBREAK *integer*

<u>OPERAND</u>	<u>DESCRIPTION</u>
----------------	--------------------

<i>integer</i>	<u>Break pages when printing</u> parameter.
----------------	---

0 – No.
1 – Yes.

DEFINITION

This setting controls page breaks when printing downloaded files.

EXAMPLE

WC_PAGEBREAK 1

WC_FASTPARSE *integer*

<u>OPERAND</u>	<u>DESCRIPTION</u>
----------------	--------------------

<i>integer</i>	<u>Fast HTML Parsing</u> parameter.
----------------	-------------------------------------

0 – No.
1 – Yes.

DEFINITION

This setting allows to increase HTML files parsing speed.

EXAMPLE

WC_FASTPARSE 1

<< [PREVIOUS](#)

