

ImageConverter Plus Manual

ImageConverter Plus – it's a powerful tool for viewing, editing and converting graphic files.

ImageConverter Plus consists of two parts: *graphic multidocument editor* and *extension*, embedded into *Windows Explorer pop-up menu*.

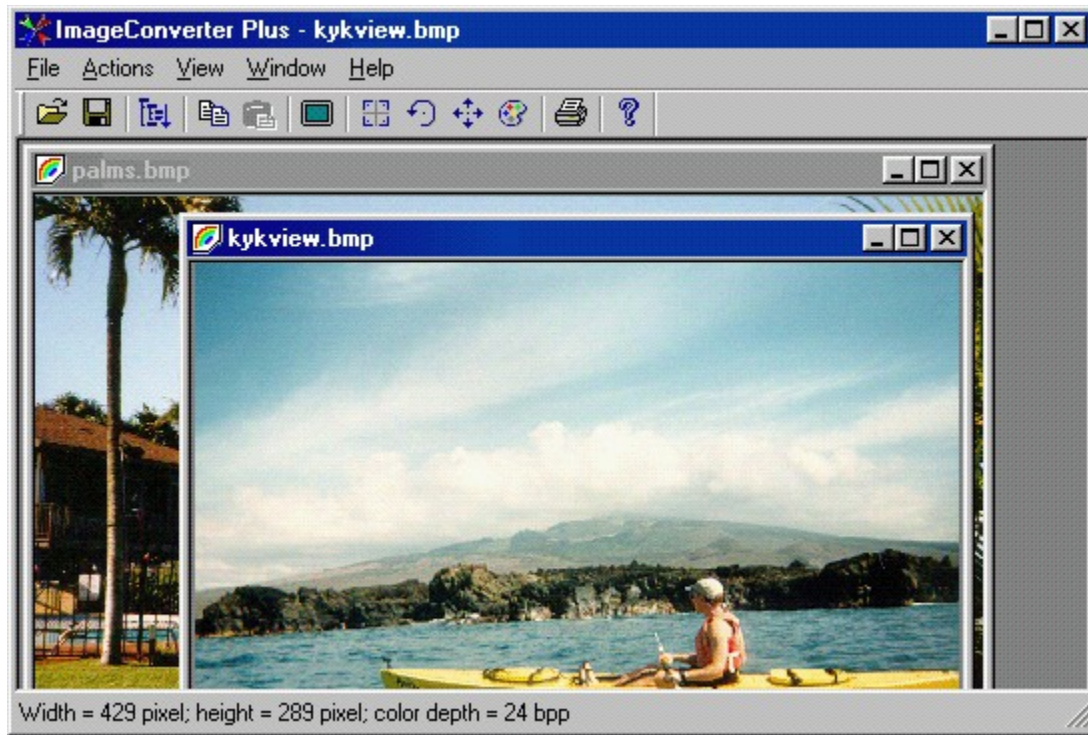
Graphic Editor allows to read and process graphic files of supported formats, and save results after. Besides, with the help of *Graphic Editor* you can fast and easy create and execute task for graphic files batch processing. [Read more...](#)

Extension, embedded into *Windows Explorer pop-up menu*, allows to quickly view graphic file, without opening it in graphic editor, to get full information about graphic file and to convert it with one mouse click. [Read more...](#)

ImageConverter Plus can read 18 graphic formats and convert into 10 graphic formats. [Read more...](#)

Graphic editor

Graphic Editor is assigned to view, process and convert graphic files.



Menu

Toolbar

Status Bar

Batch processing

Graphic editor: Menu



Program menu structure:

File	Actions	View	Window	Help
Open...	Copy to Clipboard	Toolbar	Cascade	About
Save As...	Stretch Image	Status Bar	Tile	Help contents
Bitmap	Mirror Image	Zoom	Arrange icons	
JPEG	Vertically	Fit within work area	<Doc's list>	
GIF	Horizontally	5 %		
PNG	Vert. And Hor.	10 %		
TIFF	Rotate Image	20 %		
Targa	30 Degrees	30 %		
PCX	60 Degrees	40 %		
DCX	90 Degrees	50 %		
EPSF	120 Degrees	60 %		
FaxMan	150 Degrees	70 %		
Batch Converting	180 Degrees	80 %		
Print	210 Degrees	90 %		
Print Preview	240 Degrees	100 % (Normal size)		
Print Setup	270 Degrees	150 %		
Close	300 Degrees	200 %		
Close All	330 Degrees	300 %		
<Recent Files>	Custom...	400 %		
Exit	Modify color depth	Work Area back color		
	24 bpp	Windows default		
	8 bpp	ImageConverter def.		
	4 bpp	Custom		
	1 bpp			
	Grayscale			

Graphic editor: Tool Bar



Open existing image file



Save active image with new name and graphic format



Launch batch processing



Put active image into Windows clipboard



Create new image from Windows clipboard contents



Modify active image viewing mode



Mirror active image



Rotate active image



Stretch active image



Modify active image color depth



Print active image



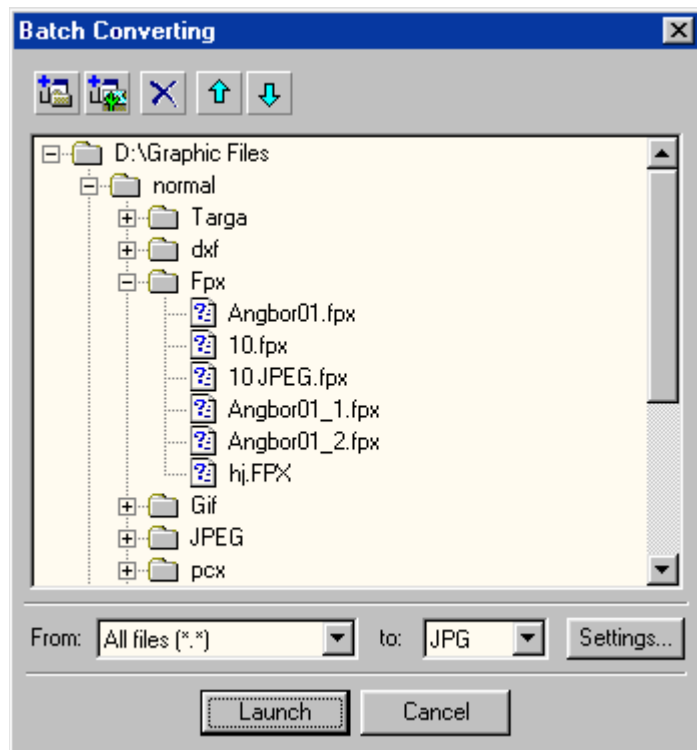
Display program information, version number and copyright

Graphic editor: Status Bar


Page 2 of 22; width = 160 pixel; height = 120 pixel; color depth = 8 bpp

In the program Status Bar is displayed information about active file: number of pages for multipage file, color depth, image height and width.

Graphic editor: Batch Processing



Graphic Editor allows to process files in the batch mode.

Press  button on the toolbar to switch to the batch mode.

With the help of window that will appear on the screen enter the list of files for batch processing, set output format and press button **Launch**.

To customize output file settings use button **Settings**.

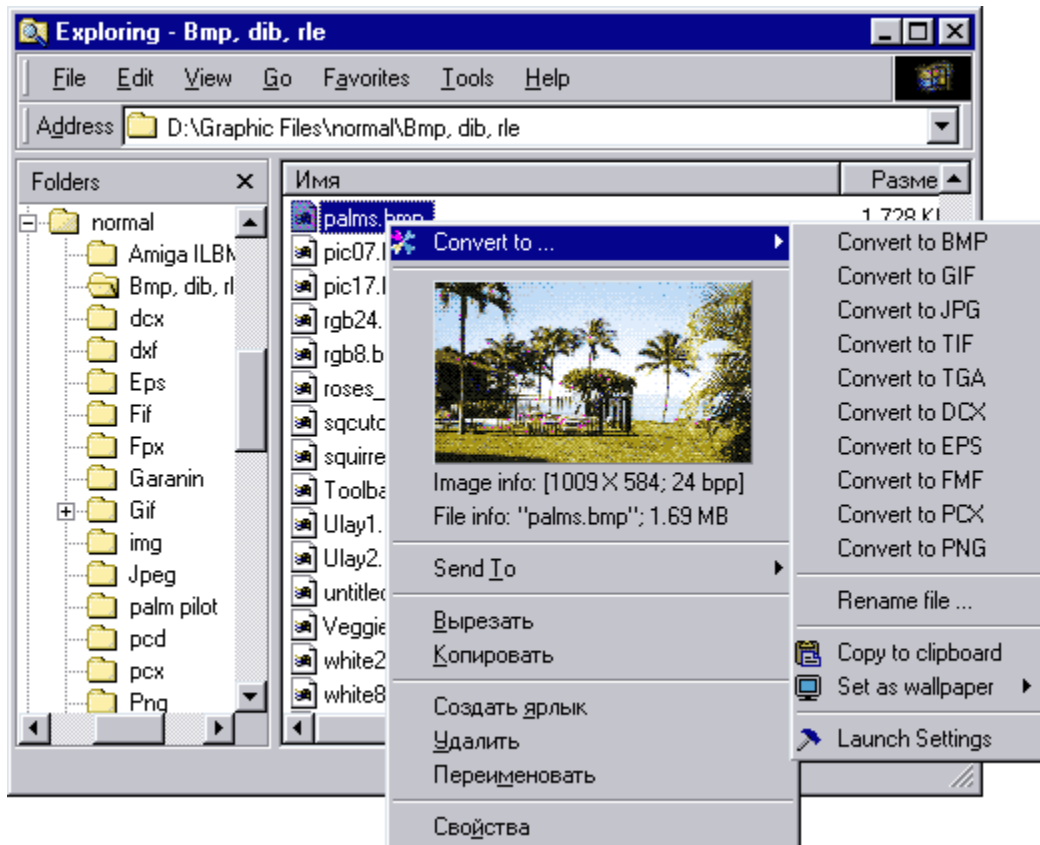
See also:
[Batch Processing Settings](#)

Windows Explorer shell extension

This component allows to add thumbnail and brief information about selected file into *Windows Explorer* pop-up menu. It also allows user to convert selected file or group of files into one of 10 formats, copy graphic file to *Windows clipboard*, set graphic file as *Windows desktop* wallpaper and rename selected files according to the rule.

Thumbnail size and quality, list of available file information, rules of file converting and renaming can be customized with shell settings.

Windows Explorer pop-up menu appears on the screen if you select one or several graphic files and press right mouse button above the selection:



Shell Settings

There are several ways to open the settings:

1. Press **Start=>Programs=>fCoder=>ImageConverter Plus=>Shell Settings**
2. Select any image in *Windows Explorer* and do the right-mouse-click into selected region. Select the **Convert to...** string in the *popup-menu* and choose the **Launch Settings** command.
3. Do the double-mouse-click in **ImageConverter Plus Settings** icon in systray:



If you have chosen any new features and want to save and use it in next converting, please press the **Apply** or **Ok** button. If you need to restore old settings, please press the **Cancel** button.

ImageConverter Plus Settings panel contains eight pages:

Thumbnail -- contains thumbnail and file info settings.

Zoom and Rotation -- contains width and height of destination image(s), resizing quality, rotation angle and background color.

Rename batch -- contains a rename feature settings.

About -- keeps a short information about the ImageConverter Plus program, the version number and a copyright.

Color depth(for all formats) -- contains destination image color depth. Used for image converting.

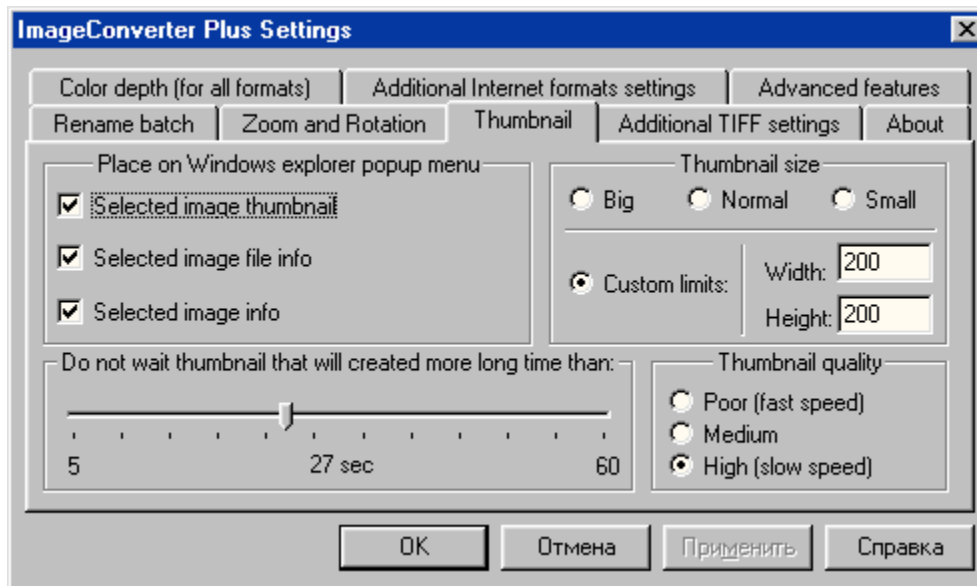
Advanced features -- Used for image converting.

Additional Internet formats settings -- Used for converting into JPEG, GIF or PNG formats only.

Additional TIFF settings -- Used for converting into TIFF format only.

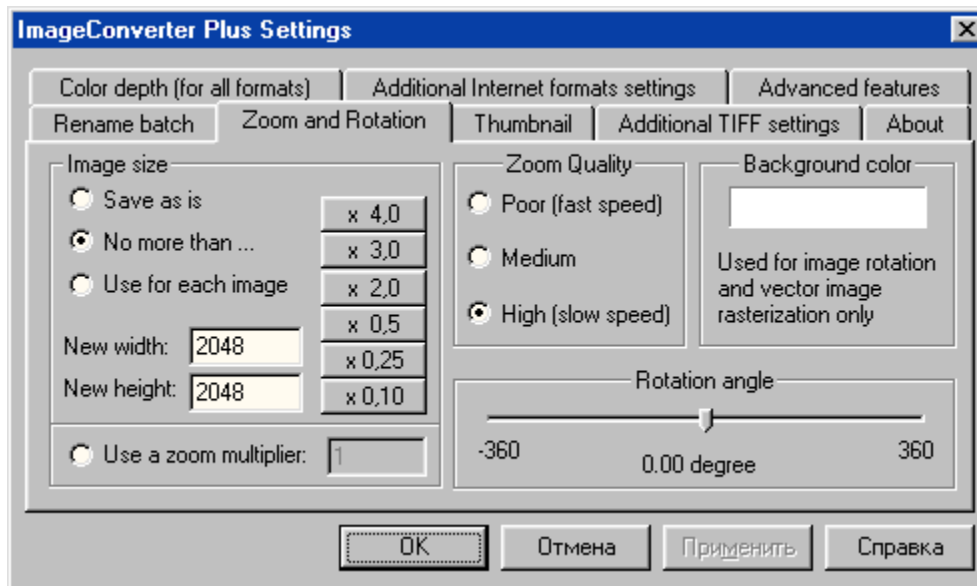
Shell Settings: Thumbnail

On this page you can set thumbnail height, width and quality, maximum allowed time for thumbnail creation, file info displayed in pop-up menu.



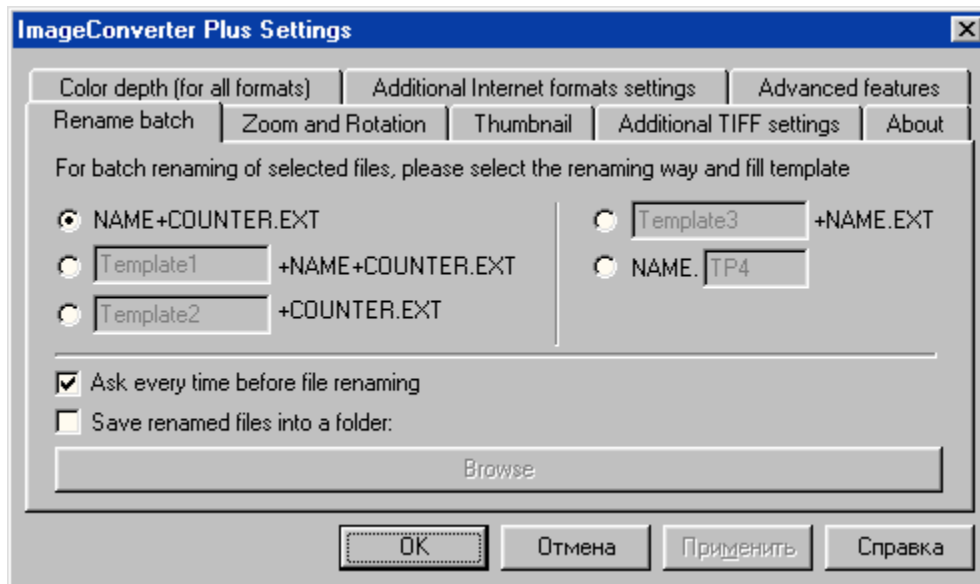
Shell Settings: Zoom and Rotation

On this page you can set output file height, width and quality, size calculation method, rotation angle and image background color.



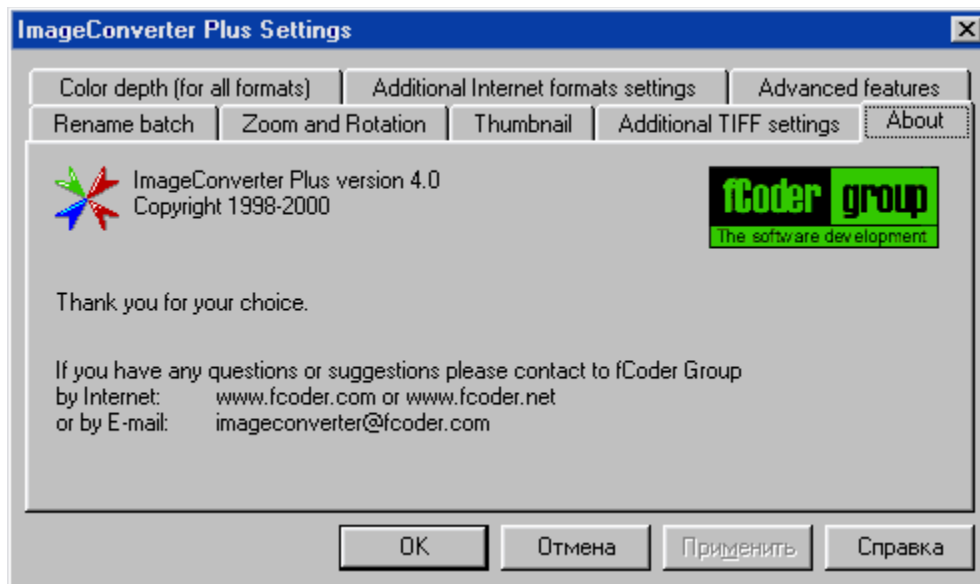
Shell Settings: Rename Batch

On this page you can set the rule according to which files will be renamed and path to the destination folder where renamed files will be copied.



Shell Settings: About

This page keeps short information about the **ImageConverter Plus**, the version number and a copyright.



To purchase the commercial version of **ImageConverter Plus**, please press the **Buy it** button or enter any of these URLs:

<http://www.fcoder.net/register/index.htm>

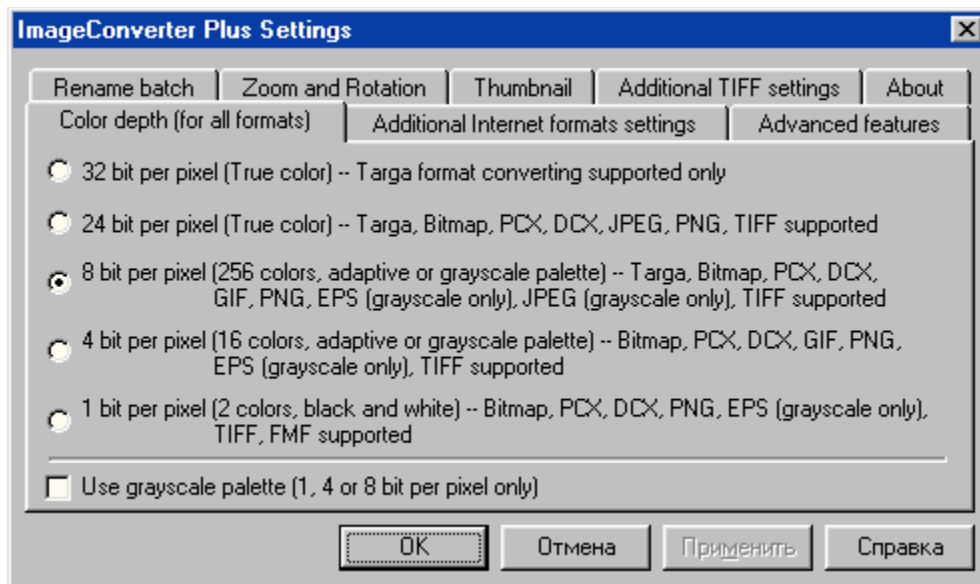
or

<http://www.fcoder.com/register/index.htm>

in your Internet Browser address field, select a payment way and fill in the registration form.

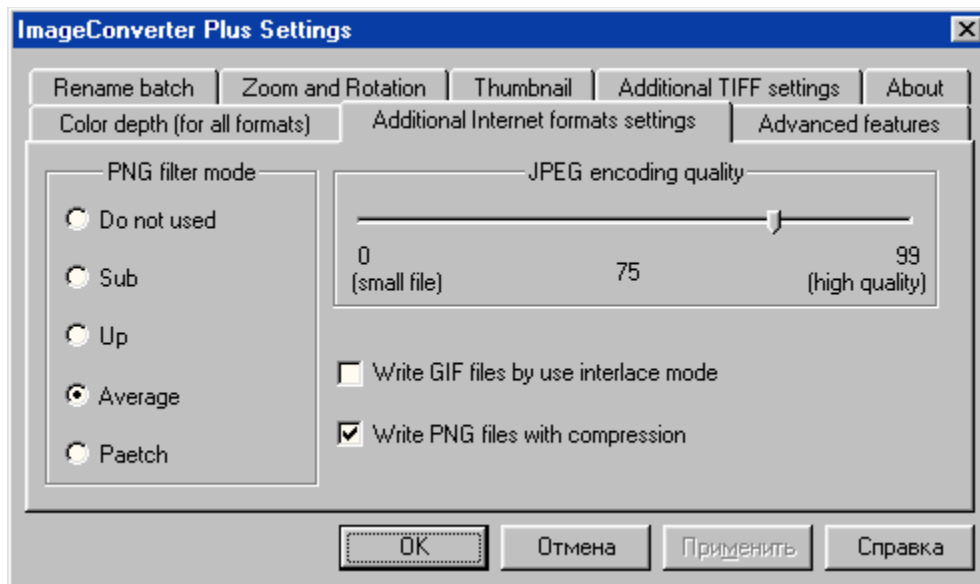
Shell Settings: Color depth

On this page you can set converted files color depth.



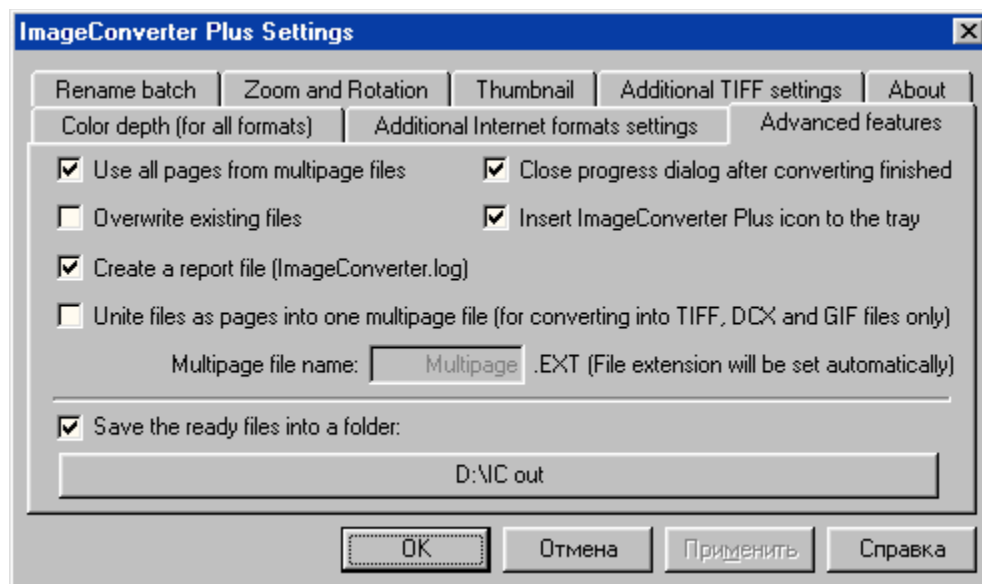
Shell Settings: Additional Internet formats settings

On this page you can customize settings for converting into GIF, JPEG and PNG formats.



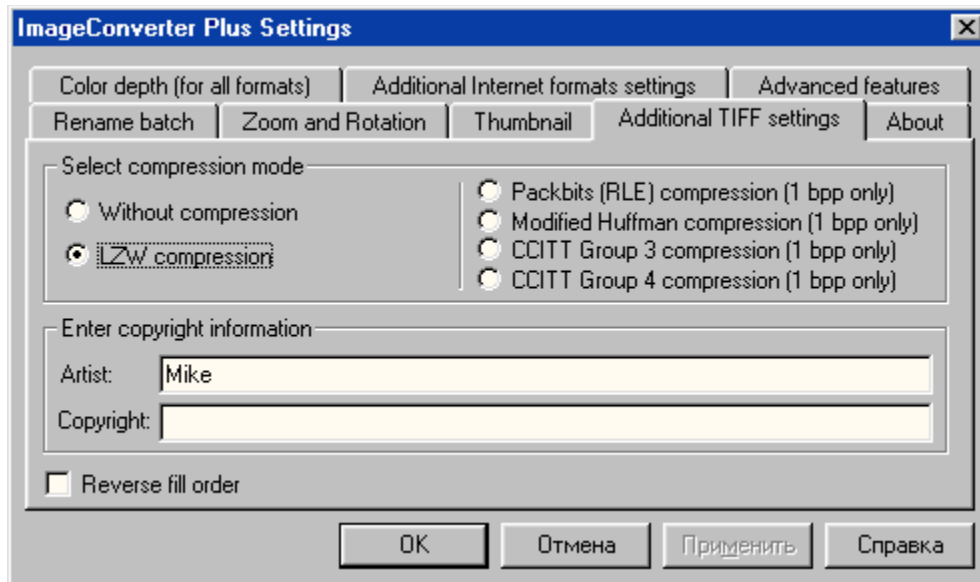
Shell Settings: Advanced features

On this page you can customize additional settings for converting.



Shell Settings: Additional TIFF settings

On this page you can customize additional settings for converting into TIFF format.



Supported graphic formats

TIFF(Tag Image File Format): Images with LZW, PackBits, Modified Huffman encoding, CCITT Group 3 1D, CCITT Group 3 2D and CCITT Group 4 compression and uncompressed.

LZW algorithm licensed under US patent No. 4558302 from Unisys.

Monochrome, 256 color, grayscale, 24-bit color and CMYK* color formats are supported.

GIF(Graphics Interchange Format): Animated and static, interlaced and non-interlaced images are supported. LZW algorithm licensed under US patent No. 4558302 from Unisys.

BMP(Windows Bitmap Format): All uncompressed and OS/2 Bitmap images are supported.

PCX and DCX(Paintbrush Format): Monochrome, 16 color, 256 color and 24-bit color images are supported.

EPS(Encapsulated Postscript Format): Encapsulated postscript files with preview image are supported only. ImageConverter Plus can convert your images into grayscale EPS files only.

TGA(Targa Format): All 8, 16, 24, and 32 bit images are supported. Versions 1 and 2 of the file format are supported although compressed images in V 1.00 format may take longer to display than Version 2 images.

JPEG(Joint Photographic Experts Group Format): All JPEG files in compliance with the JFIF standard are supported. Progressive* JPEG images are supported, too.

PNG(Portable Network Graphics Format): Standard and interlaced PNG images are supported.

DXF*(Drawing Interchange Format): 2 Dimensional DXF files are supported.

FPX*(FlashPix): FlashPix images are supported.

WMF*(Windows Meta-File Format): Only metafiles that conform to the Aldus Placeable Metafile Format are supported. Most applications, which export or import metafiles support this format.

IMG*(Erdas Imagine Format): All IMG files are supported.

WPG*(Word Perfect Graphic Format): Word Perfect Graphic Format images are supported.

PCD*(Kodak Photo CD Format): Kodak Photo CD images are supported.

*) Read only formats

Registration Service

You can buy the latest full commercial program version from one of our sites:

<http://www.fcoder.com/register/index.htm>

or

<http://www.fcoder.net/register/index.htm>.

You can pay by filling out on-line form, sending form by fax, or dictate your bank account credits to the operator by phone. We also accept checks.

You can download commercial version from our server or order it on CD-ROM.

If you have any questions concerning payments feel free to send us e-mail:
imageconverter@fcoder.com. Our support team will reply within two days.

Support Service

If you have any questions or difficulties using our programs send us e-mail support@fcoder.com.
Our support team will reply within two days.

You can download the latest **ImageConverter Plus** demo version from our sites: <http://www.fcoder.com>
or <http://www.fcoder.net>.

License Agreement

IMPORTANT - PLEASE READ ATTENTIVELY !

The present license agreement is a legal document, it consists between you (either an individual or a single entity) and fCoder Group International, for the fCoder software product identified above, which includes computer software and may include associated media, printed materials, and "online" or electronic documentation hereafter known as ("PROGRAM"). The PROGRAM also includes any updates and supplements to the original PROGRAM provided to you by fCoder Group International. By installing, copying, downloading, accessing or otherwise using the PROGRAM, you agree to be bound by the terms of this license. If you do not agree to the terms of this license, do not install or use the PROGRAM.

THE LICENSE FOR the PROGRAM

The PROGRAM is protected by copyright laws and international copyright treaties, as well as other intellectual property laws and treaties. The PROGRAM is licensed, not sold.

1. GRANT OF LICENSE.

This AGREEMENT gives you the following rights:

***) Systems Software.**

You may install and use one copy of the PROGRAM on a single computer, including a workstation, terminal or other digital electronic device ("COMPUTER").

***) Storage and use in a network**

You may also store or install a copy of the PROGRAM on a storage device, such as a network server, used only to install or run the PROGRAM on your other COMPUTERS over an internal network. However, you must acquire a dedicated license for each separate COMPUTER on or from which the PROGRAM is installed, used, accessed, displayed or run. A license for the PROGRAM may not be shared or used concurrently on different COMPUTERS.

2. DESCRIPTION OF OTHER RIGHTS AND LIMITATIONS.

***) Limitations on Reverse Engineering, Decompiling, and Disassembling.**

You may not reverse engineer, decompile, or disassemble the PROGRAM, except and only to the extent that such activity is expressly permitted by applicable law notwithstanding this limitation.

***) Separation of Components.**

The PROGRAM is licensed as a single product. Its component parts may not be separated for use on more than one computer.

***) Rental.**

You are not authorized to rent, lease or lend the PROGRAM.

***) Software Transfer.**

The initial user of the PROGRAM may make a one-time permanent transfer of this PROGRAM only directly to an end user and this transfer must include all of the PROGRAM (including all component parts, the media and printed materials (if any), any upgrades, and this agreement.) The end-user of such transfer must agree to comply with the terms of this agreement.

***) Termination.**

Without prejudice to any other rights, fCoder Group International may terminate the present agreement if you do not observe its conditions and rules. In such event, you must destroy all copies of the PROGRAM.

3. DISCLAIMER OF WARRANTY

THIS SOFTWARE ARE SOLD "AS IS" AND WITHOUT WARRANTIES AS TO PERFORMANCE OR MERCHANTABILITY OR ANY OTHER WARRANTIES WHETHER EXPRESSED OR IMPLIED.

Because of the various hardware and software environments into which program may be put, NO WARRANTY OF FITNESS FOR A PARTICULAR PURPOSE IS OFFERED.

Good data processing procedure dictates that any program be thoroughly tested with non-critical data before relying on it. The user must assume the entire risk of using the program. ANY LIABILITY OF THE SELLER WILL BE LIMITED EXCLUSIVELY TO PRODUCT REPLACEMENT OR REFUND OF

PURCHASE PRICE.

COPYRIGHT

The program, including any images, photo, animation, video, sound recordings, music and text, are the intellectual property of fCoder Group International or its suppliers and may be protected by the legislation on the copyright and rules of the intellectual property laws and treaties. This agreement does not authorize you to make copies of printed materials accompanying the Program.

fCoder Group International © 1998-2000

www.fcoder.com

www.fcoder.net

imageconverter@fcoder.com

