

Setup Guide

for Windows

StarSchedule Server 5.1

Sun Microsystems, Inc.

Copyrights and Trademarks

Sun, Sun Microsystems, the Sun logo, StarOffice, the StarOffice logo, Java, Solaris, and JRE (Java Runtime Environment) are trademarks or registered trademarks of Sun Microsystems, Inc. in the United States and other countries. PostScript is a registered trademark of Adobe Systems Inc. X-Printer is a registered trademark of Bristol Technology Inc. SPARC is a registered trademark of SPARC International Inc. UNIX is a registered trademark, which is solely licensed in the United States, and in other countries by X/Open Company Ltd. Motiv is a registered trademark of Open Software Foundation Inc. X Window System is a trademark of X Consortium Inc. International electronic Thesaurus (c) 1992 and International CorrectSpell (c) 1991, both from Lernout & Hauspie Speech Products N.V. All rights reserved. International CorrectSpell is a registered trademark of Lernout & Hauspie Speech Products N.V. No part of the computer algorithms or databases may be copied or reproduced or disassembled in any manner whatsoever.

"R:BASE Technologies, Inc has licensed Oterro to Sun Microsystems, Inc. Oterro is a registered trademark of R:BASE Technologies, Inc. R:BASE Technologies, Inc. is not liable for any claims made against products from Sun Microsystems, Inc.". The copyright for the import and export filters used in this program is the property of Independent JPEG-Group and Sun Microsystems, Inc. The copyright for the clip arts supplied is the property of Management Graphics.

The "JRE (Java Runtime Environment) for OS/2" made by Sun Microsystems, Inc. is exclusively licensed to owners of a IBM OS/2 license.

The following statement only applies to vCard and vCalendar : (C) Copyright 1996 Apple Computer, Inc., AT&T Corp., International Business Machines Corporation and Siemens Rolm Communications Inc. For purposes of this license notice, the term Licensors shall mean, collectively, Apple Computer, Inc., AT&T Corp., International Business Machines Corporation and Siemens Rolm Communications Inc. The term Licensor shall mean any of the Licensors. Subject to acceptance of the following conditions, permission is hereby granted by Licensors without the need for written agreement and without license or royalty fees, to use, copy, modify and distribute this software for any purpose. The above copyright notice and the following four paragraphs must be reproduced in all copies of this software and any software including this software. THIS SOFTWARE IS PROVIDED ON AN "AS IS" BASIS AND NO LICENSOR SHALL HAVE ANY OBLIGATION TO PROVIDE MAINTENANCE, SUPPORT, UPDATES, ENHANCEMENTS OR MODIFICATIONS. IN NO EVENT SHALL ANY LICENSOR BE LIABLE TO ANY PARTY FOR DIRECT, INDIRECT, SPECIAL OR CONSEQUENTIAL DAMAGES OR LOST PROFITS ARISING OUT OF THE USE OF THIS SOFTWARE EVEN IF ADVISED OF THE POSSIBILITY OF SUCH DAMAGE. EACH LICENSOR SPECIFICALLY DISCLAIMS ANY WARRANTIES, EXPRESS OR IMPLIED, INCLUDING BUT NOT LIMITED TO ANY WARRANTY OF NONINFRINGEMENT OR THE IMPLIED WARRANTIES OF MERCHANTABILITY AND FITNESS FOR A PARTICULAR PURPOSE. The software is provided with RESTRICTED RIGHTS. Use, duplication, or disclosure by the government are subject to restrictions set forth in DFARS 252.227-7013 or 48 CFR 52.227-19, as applicable.

Copyright © 1999 by : Sun Microsystems, Inc.
 901 San Antonio Road
 Palo Alto, CA 94303

All rights reserved. Use of the Software (including Documentation) is subject to the terms and conditions of accompanying license agreement. Installation or use of the Software constitutes acceptance of all terms and conditions of the license. No part of this User's Guide or the accompanying programs may be reproduced in any form (print, photocopy, or other medium) without the express written authorization of Sun Microsystems, Inc. We shall prosecute all who make illegal copies of this program using every available means at our disposal. The customer is the owner of the program (User's Guide and data media). In regard to errors in the program or any damage incurred though usage of the program, Sun Microsystems cannot accept any liability. In the event that an error is discovered, Sun Microsystems will attempt to correct it in the quickest possible time. This program may be used only in accordance with the attached license agreement.

Table of Contents

StarSchedule Server Installation (Windows)1

Installation Requirements1

Starting the Setup1

The Setup Dialogs1

Selecting the Installation Directory2

Starting the Server3

Server Administration3

Server Deinstallation3

StarSchedule Server Installation (Windows)

The StarSchedule Server is installed and executed as an independent application. This server makes it possible for StarOffice network users to access a joint event calendar.

After the installation, the server starts and runs automatically in the background.

The user login and administration on a single server can be completed in StarOffice with the StarSchedule entry in the context menu, and the sub-entries in the Explorer. For additional information, please read "StarSchedule Network" in the StarOffice Help

Log into the system as System Administrator to install the server (under Windows 9x register as a normal user and issue a password later: see below).

Installation Requirements

You need between 20 and 40 MB free space for the server files in the directory in which the server is to be installed. Additionally you also need about 2 MB of free space in this directory for each user that is to have a Schedule on this server.

Starting the Setup

Select the Setup.exe program. The Setup program can be found in the directory located in the schedule server installation files.

The Setup program will now be started and initialized.

The Setup Dialogs

You will first see a Welcome dialog.

The **HELP** button will appear in many of the Setup dialogs, offering you help with the current dialog. After reading the Help text, you can return to the Setup program with the **BACK** button. **DO NOT** close the Help dialog with the **Close** button, since this will cancel the Setup installation immediately!

- ◆ Confirm the Welcome dialog by clicking the **NEXT** button.

A dialog will now appear containing the readme.txt file. This file can also be opened and read later on after completing the installation process.

- ◆ Read the Readme file carefully, then continue with **NEXT**.

A window with the license agreement will appear.

- ◆ Please read this important license agreement carefully. If you agree to all conditions, continue the installation with the **ACCEPT** button. If you do not agree to the licensing conditions, select the **CANCEL** button. This will terminate the server installation process.

Selecting the Installation Directory

Choose an installation path in one of the selection dialogs by clicking the **BROWSE** button, or enter a path directly in the text box. The default for the installation path: C:\SdlSrv51.

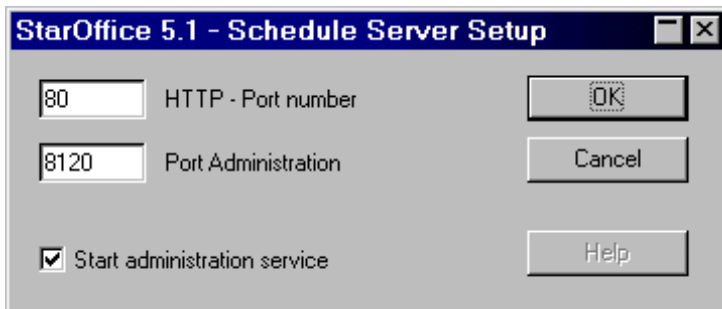


Please make sure that the StarSchedule server is **NOT** installed in the same directory as StarOffice.

Continue with **NEXT**.

A dialog will appear to inform you that all necessary steps have been made to successfully copy the program files. Click **COMPLETE** to continue the installation process.

A bar will now appear on your screen to report the installation process.



The **STAROFFICE 5.1 SCHEDULE SERVER SETUP** will appear shortly before ending the installation. Here you are able to select the HTTP port and the Administration port for the server. Normally, the default value should remain the same if no other server is running on the computer. If more than one server is running on one computer, each server must receive its own port. Make sure that the **START ADMINISTRATION SERVICE** box is checked. Now click **OK**.

The installation is now completed. Click the **COMPLETE** button.

Starting the Server

The server will run automatically every time you restart your computer.

In the Windows Start menu/program, you will find a new program group with entries for the Schedule Server Setup program and the Administration tool.

Server Administration

The main server functions can be administered with a web browser (that enables Java and JavaScript), over the TCP/IP protocol. If you use the Netscape Navigator, you will need at least the 4.0.7 version or more.

In the web browser, select the name of the server in the URL field. If you have chosen a port number other than 80, enter the port number after the server's name and a colon (server: port number).

Windows 9x: Log in the first time without a password. A password can be defined on the next page. This guarantees that in future only those users who know the password can administer the Schedule Server.

You can start up to 10 schedule servers on the same computer.

Further administration will take place with the new server entries in the StarOffice Explorer. A complete description of all dialogs and context menus can be found under "StarSchedule" in the StarOffice Help.

Information for Windows NT: If a user is registered for several domains, the administrator's domain will be used to insert a server user to a server database.

Server Deinstallation

If you want to de-install the schedule server, select Setup.exe file of the schedule server directory. Now select the Deinstallation option in the Setup main dialog.