



USER MANUAL



Introduction

Congrats on the purchase of your new Hug Bug pool cleaner from Kreepy Krauly!

So that your Hug Bug performs at its best, please read this manual prior to installation and only use parts manufactured by Kreepy Krauly - clearly the best pool cleaners in the world!

For guidance, or if you are unable to solve a problem using this manual, please feel free to give us a call on our Toll Free Customer Helpline number 0800 110 171.

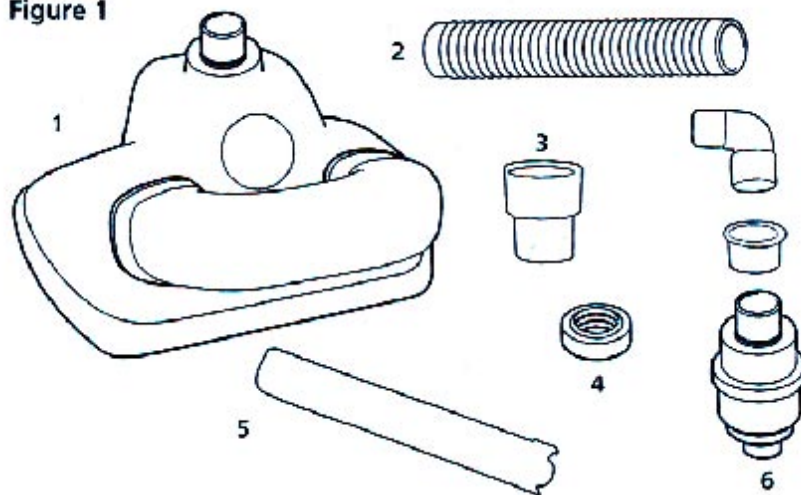
Enjoy your pool and, of course,
your Hug Bug!



Component Checklist

- 1 Hug Bug
- 2 Leader Hose
- 3 Auto-Skim Valve with adaptors
- 4 Hose weight
- 5 Hose protector
- 6 90 degree connector
- 7 Adaptor cuff
- 8 8 x hose lengths

Figure 1



Preparations

Before you start, make sure that your pool is clean and algae free.

1. Ensure your filtration system's gate valves are working properly.
2. Remove, clean and replace the weir and pump strainer baskets.
3. Thoroughly clean and backwash the filter.
4. Brush the pool let the debris settle and hand vacuum thoroughly.
5. Follow steps 2-4 again.
6. Chemically balance the water.
7. Ensure the pump and filtration system is switched off.
8. Close the floor drain and all other suction lines EXCEPT the skimmer suction line that your Hug Bug will be connected to.
9. Switch on the filtration system.



Hose Assembly & Weights

Check that the ring end of the short, soft leader hose is attached to the swivel of your Hug Bug.

Fit your Hug Bug hose together snugly without forcing. Your overall hose length should be the distance the weir is away from your pools furthers point, plus one extra hose. Fit your hose weight by placing it in the middle of the second length of hose, which is ± 2 metres from your Hug Bug.

NB: Performance is only guaranteed with genuine Hug Bug hose. Replacements hose can be purchased from your Hug Bug dealer/agent.

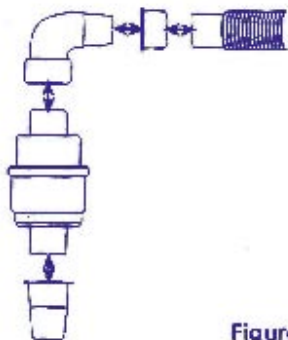


Figure 3

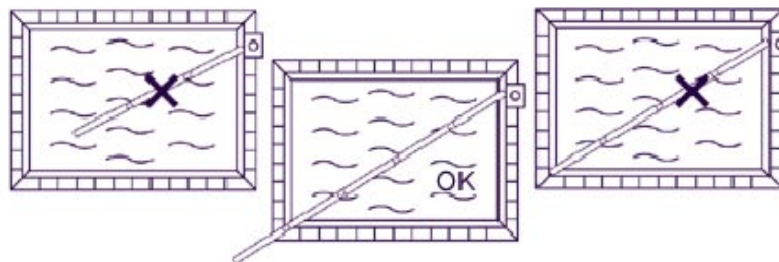
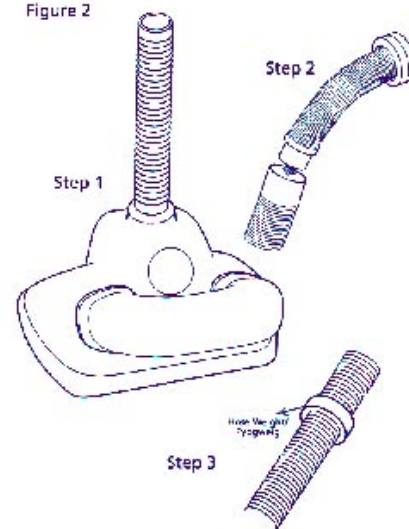


Figure 2



Installation

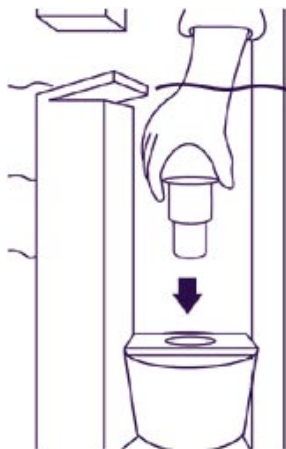
Thoroughly clean and backwash the filter to ensure it is free from dirt and debris otherwise your New Hug Bug will not work.



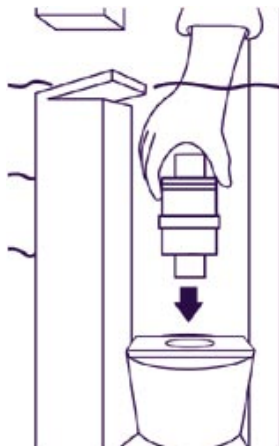
A: Switch the pump off



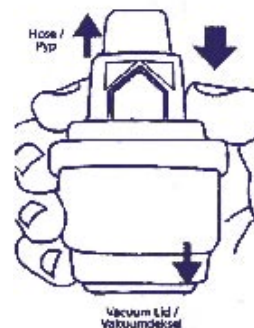
B: Clean skimmer and leaf strainer. Put it back.



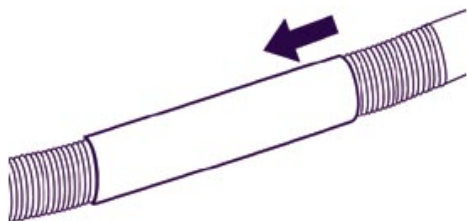
C: Place valve adaptor cuff into vacuum lid.



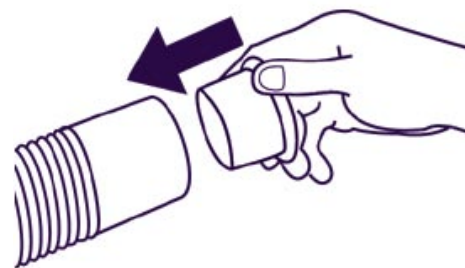
D: Place Auto-Skim Valve into valve adaptor cuff.



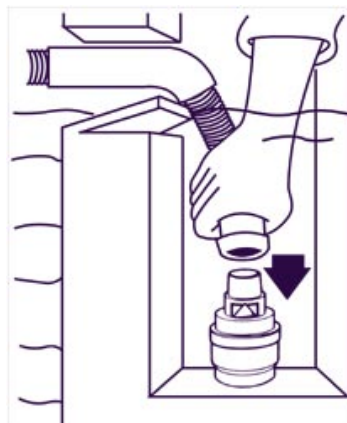
Installation continued



E: Slide hose protector over hose.



F: Place hose adaptor into hose.



G: Place the New Hug Bug into the pool and allow it to sink to the floor. Feed the hose down into the pool until it is completely filled with water.

No air must be in the hose when it is fitted into the valve adaptor cuff.



H: Switch pump on. Your fully-assembled New Hug Bug will start pulsating immediately.



Minimal Maintenance

Your Hug Bug is a modern and intelligent design. As a result, it requires very little maintenance, but inspecting it from time to time will lengthen its life and downtime.

The footpad is a wearing item and is therefore not covered by the warranty. Please replace when the traction pads have worn down. Inspect the oscillators (moving part in the suction chamber). Ensure they are free from debris. Occasionally push your auto-skim valve open and shut to flush out accumulated debris. Ensure that your Hug Bug is removed from the pool if any chemical shock treatment is planned. Please ensure that all hoses are straight when immersed as coiling can cause your Hug Bug to miss patches. If your machine and hose is removed from the pool, store the hose flat and straight in a shady area.



Troubleshooting 1 of 2

Intermittent or Stopped Operation

Large leaves or twigs can get trapped behind your Hug Bug's oscillator. Remove the oscillator by placing two fingers in the suction chamber, place your thumb on the oscillator and pull. Replace the oscillator after removing debris by ensuring the four sliding seals are in place and checking that the longer side of the oscillator is pointing towards your Hug Bug's bumper.

Sucking Air

It is normal for your Hug Bug to climb up to the surface and partially emerge but if your Hug Bug sucks air: Check that your auto-skim valve is fitted. If not, fit one.

Break out a triangular window from your auto-skim valve to release pressure.

Noisy auto-skim valve

Place a tennis ball in the weir or install the valve inverted by removing the hose adaptor from the side end and fitting the hose directly to the fixed end.

Leaves dirty patches or tracks a repetitive pattern

Check that your Hug Bug is not being pushed away from an area via the return line. Adjust the return flow eyeball away from the hose to prevent strong currents. Reset the timer to operate for a longer period. Check that there are no coiled or worn hoses.

In winter, hoses have been known to stiffen which might restrict the Hug Bug's manoeuvrability.

Gets stuck at steps and corners

Shorten the hose or use the return flow to push the hose away from the area. If your Hug Bug shoe is worn down, it will need to be replaced.



Troubleshooting 2 of 2

Off Balance

The hose weight balances the hose and should be placed approximately 2M away from the Hug Bug. When inactive, your Hug Bug should rest flat on the bottom of the pool. If it is not, then adjust the position of the hose weight.

Floating above the pool floor

If your pool's deep end exceeds 2m, fit a second hose weight approximately 2m from your first weight. Hold our Hug Bug upside down under the water and tilt from side to side to release any trapped air.

Square bottomed pools only

If your Hug Bug does not climb your pool walls, then you probably have what is termed a Square bottomed pool, where the transition radius from the floor to the wall is too small.

Air builds up in the bumper but is usually released when the Hug Bug climbs the walls. However, if you have a square bottomed pool your Hug Bug will not be able to climb. Your Hug Bug must be removed and two holes in the indentation must be drilled out. This will prevent air from accumulating and being trapped there.

IMPORTANT: You must be absolutely certain that you have a square bottomed pool before drilling the holes as once drilled, the Hug Bug will be unable to climb walls in any shape pool.



Warranty

We warrant your new pool cleaner machine unit to be free from defects in material and workmanship for 2 YEARS from date of purchase, subject to our standard conditions of sale. Please return the attached reply card to ensure your warranty is recorded.

Standard Conditions of Sale.

The WARRANTY excludes:

- Defects in the hose. (Genuine Hug Bug hoses are warranted for three years against manufactured defects.)
- Hug Bug warranty terms and conditions apply.
- Normal wear and tear of the Footpad. This must be checked monthly and replaced when worn.
- Damage due to abnormal use, lack of care, negligence, undue exposure to sun, heat, and all such acts or omissions beyond our control.
- Damage caused by an incorrect chemical balance in the swimming pool.
- Any obligation other than the obligation to repair or replace defective parts.
- Discolouration of parts. (Your Hug Bug may become discoloured as a result of being subjected to use in your swimming pool. Such discolouration, however, shall in no way affect the cleaner's operating ability.) The Hug Bug Warranty is given in place of all warranties, guarantees, express or implied, of merchantability, fitness for particular purpose, or otherwise.
- The warranty is not transferable

