

# TOMMY SOFTWARE® Direct

- Direct Entry  
Editorial.
- Power of Performance  
TommySoftware® CAD/DRAW 4 Level 1.
- Looking for More?  
TommySoftware® CAD/DRAW 4 Level 2.
- Our Introduction for Upgraders  
The Second Generation of TommySoftware® CAD/DRAW Classics.
- Support  
Direct problem solutions.
- Fast and Professional  
TommySoftware® Libraries for the practice-oriented CAD Workplace.
- CAD and More  
More views, more value, more precision.
- Everything's Got a Price  
All our products at a glance.
- Editorial Team

# Direct Entry

**Dear Reader,**

this is the second edition of our magazine TommySoftware® Direct, which is going to bring you regular news from TommySoftware®.

This magazine is not aimed at computer experts who are only interested in technical details and memory capacity. When it comes to graphical applications or CAD, we have a different definition of experts: people who know what they are doing and which tools they need to do it more quickly. That's exactly what TommySoftware® Direct is all about.

We want to open new doors for your work. Our user interface, long praised by the computer press, opens up just like your familiar drawing environment. Pens, rulers and all your customized tools are available. You can use layers just like you do now.

Our job is to develop practical programs through a constant dialog with our users, that offer real improvements to make their work easier. If you have problems working with our software, members of our technical staff are waiting in the wings at our SupportCenter. Since they work directly with programmers during product development, they know the software inside and out and can help you with all your questions..

In this edition of TommySoftware® Direct, we want to introduce a new generation of TommySoftware® CAD/DRAW programs: TommySoftware® CAD/DRAW 4 Level 1 is our new product for Windows 95. It is dedicated to become the sucesor of TommySoftware® CAD/DRAW 2. TommySoftware® CAD/DRAW 4 Level 2 is the full featured professional version of our software.

As with all our products, we want this publication to serve your needs, and we want your feedback!

Very best regards,

Thomas Maier  
*President*

and the TommySoftware® Direct team.

P.S.: For our latest news, please visit our WWW site: <http://www.tommysoftware.com/users/tommy>

# Power of Performance

**CAD/DRAW 4 Level 1 (32bit) - the first true 32 bit graphics application that is expandable and easy to use.**



TommySoftware® CAD/DRAW 4 Level 1 is the first true 32 bit graphics application that is expandable and easy to use. TommySoftware® CAD/DRAW 4 Level 1 is a full fledged graphics application that combines the advantages of powerful illustration packages with the precision of CAD products without their complicated interfaces. TommySoftware® CAD/DRAW 4 Level 1 is the preferred tool for sketching, drafting, floor plans, landscape design, technical illustrations or designs.

## The New Release Features:

- On-line guide
- Expandability through modules
- Smart libraries™
- True color bitmaps
- Large scale printouts on multiple pages
- Improved Drag and Drop
- A real 32 bit application

"More and more customer learn that TommySoftware®s CAD/DRAW products offer a stunning price/performance. Through our research we have learned that most users are unhappy upgrading their software every few months. Expandability is a convenient and safe way out. Backed by our try-before-you-buy strategy every user can test drive the software for 30 days and will be convinced that this is the tool for easy yet powerful designing." said Thomas Maier, President of TommySoftware®, North America, Inc. "If you are not one of the big players in the market, then you have to create better applications that meet the needs of the user"

## New Features:

This completely redesigned software introduces features that are untypical for products of this price range:

- TommySoftware® CAD/DRAW 4 Level 1 offers an on-line guide that walks the user through ever single step, no matter how complex the task. It tells the applicant precisely what options he or she has.
- One of the new abilities to this release is its expandability: the user can use add-on modules to enhance the functionality of the product. TommySoftware® plans to offer several modules that the user can easily link with TommySoftware® CAD/DRAW 4 Level 1. One of the first modules will enhance the software to 3D capabilities.
- This new release offers a set of new objects and features: Bitmaps and Erasers. This allows the user to combine true color bitmaps and vector graphics in one file and to cut out certain areas of those objects using the eraser feature.
- TommySoftware® CAD/DRAW 4 Level 1 will also include smart libraries. This enables the user to change a symbol in one library effecting the outcome in all drawings, the symbol was used. This feature was especially implemented for power users to decrease the amount of time wasted keeping their designs updated. The number of symbols per library has also been increased: Libraries are now storing up to 1,000,000 symbols. A nested structure, a symbol cache (to save memory) and a hierarchical structure

have also been added.

- Output of large drawings over multiple pages will be a helpful tool for most home and home office user: It eliminates the need for expensive printers.
- TommySoftware® CAD/DRAW 4 Level 1 features also comments in drawings, a tool that makes it easy to share documents in work groups.
- A full featured text editor, full TrueType and Postscript font support and the ability to design individual font sets gives this application everything needed for working with fonts.
- Besides its improved Drag and Drop functionality TommySoftware® CAD/DRAW 4 Level 1 also is fully compatible with all Windows 95 and Windows NT 3.51 compliant applications.

It reads AutoCAD files, comes with various free add-ons, such as libraries, fonts, modules, an on-line tutorial and an extensive on-line manual. TommySoftware® CAD/DRAW 4 Level 1 is a real 32 bit application and operates in the Windows 95 and Windows NT 3.51 environment only.

**Availability:**

TommySoftware® CAD/DRAW 4 Level 1 is a 30 day "test-before-you-buy" application that is available on all major on-line services such as CompuServe (GO TOSOENG) and America Online (keyword: TommySoftware). It is also downloadable from the Internet:

<http://www.tommysoftware.com/users/tommy>.

TommySoftware® products are only directly available from TommySoftware®, North America, Inc. or from one of its dedicated international partners.

**System Requirements:**

TommySoftware® CAD/DRAW 4 Level 1 needs a PC with 386 processor, Windows 95 with 8 MB RAM or Windows NT 3.51 with 8 MB RAM and 10 MB on hard disk. VGA graphics and a mouse are required. A CD-ROM drive is recommended but not necessary.

# Looking for More?

## **CAD/DRAW 4 Level 2 (32bit) - The first true 32 bit CAD application that works with a pen based concept**



TommySoftware® CAD/DRAW 4 Level 2 is a full featured CAD application made in Germany. It was developed as a pen-based system, making it easy for designers to make the transition from paper to the screen.

The application combines the European standards (DIN) and the US standards (ISO) for computer aided design. It also features a rich set of graphical features not typically found in CAD applications and only found in some graphical products, thus allowing the user to benefit from the ease of use of those user interfaces.

TommySoftware® CAD/DRAW 4 Level 2 is the preferred tool when it comes to professionally designing buildings, floor plans, mechanical engineering, sketching or drafting.

### **This new release features (Overview):**



A pen-based concept



Expandability and programmability through modules using Visual C++, Visual Basic or a compatible language



Bitmap or symbol based textures



Bitmap objects in drawings



Display on two screens



More than 100 new features

"TommySoftware® CAD/DRAW 4 Level 2 is a work horse. Users will appreciate its rich set of features, its speed and its reliability. TommySoftware® CAD/DRAW 4 Level 2 is a direct attack on over priced, slow applications like Autocad LT 2, etc. which it is by far superior to in almost all aspects." says Thomas Maier, President of TommySoftware®, North America, Inc. "Using TommySoftware® CAD/DRAW 4 Level 2 is very much like driving a German car: It is reliable, comfortable and a pleasure to own."

### **New features:**

This completely redesigned software introduces the following new features:



A pen based concept which allows the user to do his drafting task as if he were still drawing on paper: A set of up to 500 different pens with different colors, widths and other attributes.



Modules which allow the user to expand the functionality of the software with a simple module add-on: These modules are based upon the TOSO (TommySoftware® Open Software+) Interface 4.0. Additional modules adding capabilities like 3D will be introduced by TommySoftware® shortly.



The capability to write individual modules using Visual C++ or Visual Basic or any other compatible language: For the first time the user is able to individualize TommySoftware® applications. The programming interface is based on TOSO Interface 4.0 and the complete documentation is included in the release.



Bitmap or symbol based textures: This feature gives the user the freedom to scan or design a certain texture and then to apply it to his design. Hence natural textures are now possible, e.g. wooden chairs or marble surfaces.

- Multi color gradient fills: This popular feature found in some graphics applications was implemented due to the demand by TommySoftware® users. The feature was implemented in such a way that users can choose various different basic filling patterns.

- Bitmap objects in drawings: This is another feature that was demanded by most users allowing you to combine vector and bitmap graphics in one single design.

- Two screen support: TommySoftware® CAD/DRAW 4 Level 2 allows you to view the same design on different screens from different viewpoints. This is especially important for professional CAD workstations.

- Additional new features in TommySoftware® CAD/DRAW 4 Level 2: Export true color bitmaps, backup files, auto-save, archive, editable text-based file format, Server/client Setup, Bézier curves, section printing, rotated and distorted bitmaps, maximum output precision 2540 dpi, equidistant, multiple line option, geometry-line, circle, ellipse, gradient fills, 100 Undo/Redo-levels, internal cut/copy/paste for maximum precision, multiple copy, align objects, nested groups, surface combination, associative dimensioning (perimeter, incremental, architectural), generation of symbols for surface finish (shape & position tolerance, edge, center hole), up to 50 different coordinate systems, full support of US (imperial) units, filled symbol based hatching types, use of up to 50 libraries simultaneously, up to 10000 blocks per drawing, reference text, 38 pre-defined page sizes, RGB, CMY, HSB color models, color modification (lighten, darken, tint, etc.), automatic memory management, up to 1 GB memory per drawing, Developer support for TOSO Interface 4.0 users, and of course all new features included in TommySoftware® CAD/DRAW 4 Level 1, such as: Online guide, erasers, bitmap-objects, Smart Libraries™, comments in drawings, etc.

**Availability:**

Samples are available on all major on-line services such as CompuServe ([GO TOSOENG](#)) and America Online (keyword: TommySoftware). It can also be downloaded from the Internet at no extra charge:

<http://www.tommysoftware.com/users/tommy> .

TommySoftware® products are only directly available from TommySoftware®, North America, Inc. or from one of its dedicated international partners.

**System Requirements:**

TommySoftware® CAD/DRAW 4 Level 2 needs a PC with 386 processor, Windows 95 with 8 MB RAM or Windows NT 3.51 with 8 MB RAM and 12 MB on hard disk. VGA graphics and a mouse are required. A CD-ROM drive is recommended but not necessary.

# Our Introduction for Upgraders

Test TommySoftware® CAD/DRAW 2.0 (16bit) for 30 days.



Our shareware product, TommySoftware® CAD/DRAW 2.0 is now available. Fulfilling your expectations of a CAD shareware product is just the beginning for us. We want to set new standards! TommySoftware® has updated this Windows classic with a whole new set of drawing, construction, and illustration functions.

Try TommySoftware® CAD/DRAW 2.0 for 30 days. After you discover how indispensable it is, then make sure to register to get the benefit of all our services. To register, simply print the registration form from the Help menu and send it to us. In return, you will receive the full CAD/DRAW 2.0 package.

You can find the shareware version on many BBSs, at your shareware dealer, or directly from TommySoftware®. You can order the full product now, using the order form enclosed.

## Highlights:

- Complete drawing functions (lines, zigzag lines, polygons, regular polyeders, circles, circle parts, ellipses, ellipse parts, eplines, Bézier curves, freeform surfaces, freehand lines, ...)
- Numerous manipulative functions (Moving, Copying, Rotating, Scaling, Reflecting, Trimming, Rounding, Chamfering, Protecting, Releasing, Moving individual end or corner points, ...)
- Mathematical division of objects
- Semi-associative measurement and dimension lines
- Create new symbol libraries
- 256 drawing layers
- Configurable hatching
- Single and multiple line text editor using DIN/ISO compliant vector fonts
- 13 DIN/ISO page formats plus American page formats
- Support for isometric and dimetric drawing
- Free Zoom from 1 : 1.000.000.000.000
- Customizable length and angle units (metric, inch, degree, radian, ...)
- Undo function
- Use PCX bitmaps in the background
- Customizable graphic popup menu for quick command choice
- Customizable keyboard assignments
- Context sensitive Help system

## Supported File Formats:

- MPG (TommySoftware® CAD/DRAW and MEGAPAINTE®)
- TVG (TommySoftware® WINCAD® Release 1)
- Windows Metafile (via the clipboard)
- DXF (AutoCAD®, AutoSketch® etc.)
- PostScript® (export only)
- HPGL (export only)

## System Requirements

- Intel 80286 or higher processor
- 2 MB RAM
- 4 MB hard disk space
- Windows 3.1 or Windows NT
- A mouse

- Graphics card supporting 640 x 480 pixels and 16 colors

**For professional use we recommend:**

- Intel 80386 or higher processor
- 4 MB RAM
- 8 MB hard disk space
- Windows 3.1 or Windows NT
- A mouse
- Graphics card supporting 1024 x 768 pixels and 256 colors

## **Short Clips From the Press**

**From Computer-Aided Engineering, 5/95:**

"Although Windows tends to be a slow environment for CAD, CAD/DRAW is faster than any of the programs we've seen so far. The program is not fast because it's simpler or a "stripped down" version of something more complex. Something is obviously different in the way it was programmed. (...) Super Windows implementation!"

## **Upgrade Service**

Make sure that you stay up-to-date on all our new Windows programs by sending in your registration card so we can send you information about new products and upgrades.



# Support

## CompuServe



TommySoftware® offers two sections in CompuServe forums where you can put questions to our staff. For questions in English, use our section in the "CADD/CAM/CAE Vendor Forum" ([GO TOSOENG](#)), for questions in German, use our section in the "PC Industrie Forum" ([GO TOSOGER](#)). Both forums have message areas and libraries. In addition, these forums are a good place to get previews of new versions and add-ons.

If you cannot use these forums directly, you can send an email message to CompuServe ID 100273,1143 (from the Internet, the address is [100273.1143@compuserve.com](mailto:100273.1143@compuserve.com)).

If you are not already a CompuServe member, you can get information and open an account from your local CompuServe office. In the USA, call toll-free 1-800-848-8990 [or 1-614-457-8650]. In Germany call toll-free (0130) 864643 [or (089) 6653 5222]. In the United Kingdom call toll free (0800) 289458 [or (01272) 760680]. Outside these countries, call the office nearest you, or look for the ads in computer magazines. Make sure that you receive CompuServe Information-Manager for Windows ("WINCIM") 1.3.1 or higher.

# Fast and Professional

## Libraries



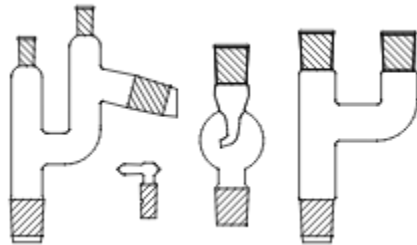
To make using TommySoftware® programs even more effective, we offer a large number of comprehensive symbol libraries. You can paste individual elements from the library onto the clipboard and use them directly in your drawings. This saves a great deal of time and effort, a feature highly valued by experts.

Libraries are available for the following areas. They can be used in any TommySoftware® program:

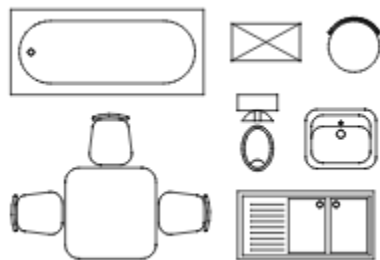
- Electrical engineering
- Electronics
- Electrical installation
- Environmental technology
- Steel profiles
- Process engineering
- Valves
- Heating and ventilation
- Landscaping
- Pneumatics
- Laboratory equipment
- Hydraulics
- Interior design

Here are examples from some of the libraries:

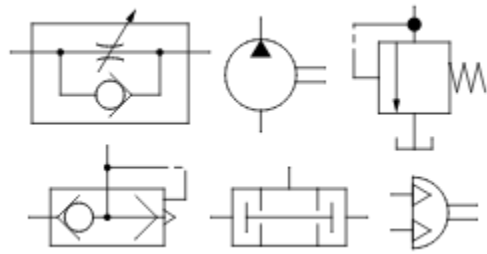
*Chemical laboratory equipment:*



*Interior design:*



*Hydraulics and pneumatics:*

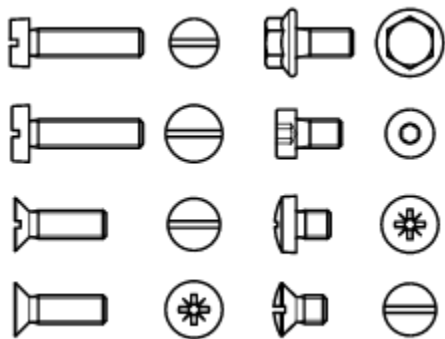


In addition we offer extra, especially comprehensive libraries for TommySoftware® Tek Illustrator and CAD/DRAW 4 covering the following areas:

- Screws
- Nuts
- Steel profiles

Examples:

*Screws:*



*Profiles:*



A complete overview of the contents of all available libraries can be found in our library catalog in the file CATALOG.HLP, included with all full versions. In general, it can be reached after installation by double-clicking on the icon labeled "Libraries".

# CAD and More

## More Comfort

You can obtain CalComp DrawingBoard III digitizers for use with TommySoftware® Tek Illustrator directly from TommySoftware®. They make the professional use of TommySoftware® applications easier, quicker and precisely controllable. You can decide which type of graphics tablet is right for you by answering the following questions.

Which input device? To trace templates, you need an input device for your digitizer called a puck. If you prefer to work freely, choose a 3-button-stylus.

Which size? For use with TommySoftware® applications, 305 x 305 mm (12 x 12 inch) and 305 x 457 mm (12 x 18 inch) digitizers are ideal. Smaller digitizers may be suitable, but they offer hardly any space for command fields.

Which brand? TommySoftware® applications can be used with any digitizer which has a driver for Windows 3.1. TommySoftware® recommends particularly the use of CalComp digitizers as they have a particularly good driver (Windows Tablet Manager). In addition they have especially good functions for replacing the mouse, choosing commands and tracing templates.

**Note:** TommySoftware® does not sell those DrawingBoards directly. However we will supply you with the address of the closest dealer near you (free of charge)

### Art#

<b>34000-Series</b>	<b>Working area mm</b>	<b>Accuracy mm</b>
34120	305 x 305	0,254
34180	305 x 457	0,254
34240	457 x 610	0,254
34360	610 x 914	0,203
34480	914 x 1219	0,203
34600	1118 x 1524	0,203

Note: All tablets include electronics, overlays (only 34120, 34180, 34240), an optional pointing device and a driver kit.

### Pointing devices without cables

	<b>Description</b>
T 222	2-button stylus, standard version
T 226	2-Button stylus, Lite-Touch version
T 224	Pressure sensitive 2-button stylus
T 211	4-button puck, linear
T 213	4-button puck, Diamond
T 212	16-button puck

### Pointing devices with cable

	<b>Description</b>
T 121	1-Button stylus
T 111	4-Button puck, linear
T 113	4-Button puck, Diamond
T 112	16-Button puck each further pointing device, with or without cable

### Driver Kits

	<b>incl. driver, handbook, connecting cable</b>
I 112	PC/DOS serial version

**More Precision**

We have precise fonts from the world's largest type vendor. Exclusive to TommySoftware® are the precise ISO-standard TrueType fonts from Fontshop especially for use with TommySoftware® Tek Illustrator. The font collection costs just US\$ 79.95.

**More Value**

Worthwhile: site licenses and educational versions. If you have multiple workstations, you can buy TommySoftware® programs with complete disk sets and additional manuals at special prices. Call for details or make a note on your order that you want a site license and we'll do the rest. You can make substantial savings with site licenses: up to US\$ 200.- per copy.

**TommySoftware® Demo Versions**

Do you want to try our software before you buy it? Simply download it from the WWW <http://www.tommysoftware.com/users/tommy>, from CompuServe ([GO TOSOENG](#)) or from America Online (Search for Keyword: TommySoftware)

**Upgrade Service**

To stay up-to-date with our Windows programs, please make sure that you return your registration card. As a registered user, you will be informed first about new products and improvements.

**Note:** Only registered users can take advantage of our upgrade offers and support!

**Inquiries:**

If you still have questions about our products, call us at our New York Headquarters: from Monday to Thursday between 10am and 1 pm and 2pm to 5pm, phone + 1 212 807 9720, fax 1 212 807 8149. Orders: 1-800 275 9406

**Problems?**

If you have the impression that your software is not working properly, please contact our [Support Center](#). They can help in case of difficulty. If there are further problems please contact our Customer Service Manager in New York, phone + 1 212 807 9720.

# Price List

Prices for the U.S.A. (prices for other countries may vary):

Product	Price in US\$	TYPE
<b>TommySoftware® CAD/DRAW 4 Level 1 for Windows 95 / NT 3.51</b>		
TommySoftware® CAD/DRAW 4 Level 1 (CD-ROM)	79.95	FP
TommySoftware® CAD/DRAW 4 Level 1 Multiuser (5)	299.95	FP
TommySoftware® CAD/DRAW 4 Level 1 Server License	3,997.95	FP
TommySoftware® CAD/DRAW 4 Level 1 "1+9"	Call!	1+9 *
Additional disk set (1.44 MB HD)	29.95	
<b>TommySoftware® CAD/DRAW 4 Level 2 for Windows 95 / NT 3.51</b>		
TommySoftware® CAD/DRAW 4 Level 2 (CD-ROM)	499.95	FP
TommySoftware® CAD/DRAW 4 Level 2 Multiuser (5)	1,999.95	FP
TommySoftware® CAD/DRAW 4 Level 2 Server License	24,997.95	FP
TommySoftware® CAD/DRAW 4 Level 2 "1+9"	Call!	1+9 *
Additional disk set (1.44 MB HD)	39.95	
<b>TommySoftware® CAD/DRAW 2 for Windows 3.1</b>		
TommySoftware® CAD/DRAW 2	59.95	FP
TommySoftware® CAD/DRAW 2 Upgrade from TommySoftware® CAD/DRAW 1.x	29.95	UP
TommySoftware® CAD/DRAW 2 "1+9"	299.00	1+9 *
<b>TommySoftware® Tek Illustrator 3 for Windows 3.1</b>		
TommySoftware® Tek Illustrator 3 (CD-ROM)	129.00	FP
TommySoftware® Tek Illustrator 3 educational version (CD-ROM)	116.10	EDU *
TommySoftware® Tek Illustrator 3 "1+9" (CD-ROM)	349.00	1+9 *
Additional disk set (1.44 MB HD)	79.95	
<b>TommySoftware® Libraries (for all applications)</b>		
Library 101: Electrical Engineering #1	29.95	
Library 102: Electronics #1	29.95	
Library 103: Electrical Installation	29.95	
Library 104: Digital Information Processing	29.95	
Library 105: Process Engineering	29.95	
Library 106: Valves	29.95	
Library 108: Heating	29.95	
Library 110: Chemistry Laboratory Equipment #1	29.95	
Library 111: Chemistry Laboratory Equipment #2	29.95	
Library 112: Chemistry Laboratory Equipment #3	29.95	
Library 114: Interior Design - Kitchen/Bathroom	29.95	
Library 115: Interior Design - Furniture	29.95	
Library 117: Mechanical Engineering - Hydraulics/Pneumatics	29.95	
Library 118: Environment & Ecology	29.95	
Library 119: Landscape Design	29.95	
Library 120: Electrical Engineering #2	29.95	
Library 121: Mechanical Engineering - Steel Section	29.95	
<b>TommySoftware® Libraries (for Tek Illustrator and CAD/DRAW 4)</b>		
Library 301: Screws	79.95	
Library 302: Nuts	79.95	

Library 303: Profiles 79.95

**Further Add-Ons** (for Tek Illustrator and CAD/DRAW 4)  
FF-ISO standard Truetype font 69.95

Valid from September 1995. All prices excluding tax. NY and CA residents: please add appropriate sales tax.

The price includes the correct number of handbooks and disk sets.

Unless otherwise shown, software is supplied on 3.5" disks. For an extra charge, software normally supplied on CD-ROM can be obtained on 3.5" disks.

The prices shown are suggested retail prices. No liability for errors and alterations.

**Symbols:**

- \* Include proof of status when ordering (student ID, student registration or similar)
- 1+9 1 full version and 9 educational licenses
- FP full product
- UP upgrade
- EDU educational license

# Editorial Team

## **Publisher:**

- Thomas Maier

## **Coordination:**

- Olaf Reiswig
- Uta Glaubitz

## **Editorial:**

- Olaf Reiswig
- Uta Glaubitz
- Susanne Berstorff

## **Layout:**

- Stefan Malz

## **Technical Assistance:**

- Djordjija Trimceski

## **Freelance Contributors:**

- Olaf Kassner
- Timo Bierbaum
- Mallory Chastagnier
- Brain R. Johnson
- Lynne Marcus
- Lisa Atkatz

## **Liability:**

Although we take every possible care, we cannot take any liability for the accuracy of any part of this publication. MEGAPAIN<sup>®</sup> is a registered trademark of TommySoftware<sup>®</sup>. AutoCAD<sup>®</sup> is a registered trademark of Autodesk. All brand names are trademarks or registered trademarks of their respective owners. TommySoftware<sup>®</sup> is an equal opportunities employer. Prices may change without notice.

TommySoftware<sup>®</sup> Direct is published by TommySoftware<sup>®</sup>, North America, Inc., New York.



### **North America, Inc.**

130 Barrow Street  
New York, NY 10014  
U. S. A.

Fon 001 212 807 9720  
Fax 001 212 807 8149  
CompuServe 100020,3647

### **Germany**

Selchower Straße 32  
D-12049 Berlin  
Deutschland

Fon 0 30 / 621 5931  
Fax 0 30 / 621 4064  
CompuServe 100142,3665

Internet "tommy@tommysoftware.com"



